

CPSLD Statistics Report

2013-2014

Created by:
Northwest Community College Library



ACKNOWLEDGEMENTS

On behalf of CPSLD members, I would like to extend our gratitude to Mike Rauschenberger, Prince Rupert Library of NWCC for compiling this year's annual CPSLD Statistics Report, as well as Rhonda Hunter from NWCC's Printshop for her valuable assistance.

I would also like to acknowledge the help of Fritz Christo, Post-Secondary Institution Funding, Post-Secondary Funding and Corporate Finance Branch, Ministry of Advanced Education, who provided us with the FTE

Melanie Wilke
Coordinator, Library Services
Northwest Community College
Chair, CPSLD Statistics Committee

CPSLD STATISTICS REPORT
2013/2014

COUNCIL OF POST-SECONDARY LIBRARY DIRECTORS OF B.C.
LIBRARY/LEARNING RESOURCES CENTRE SURVEY

| | |
|-------------|---------------|
| DEFINITIONS | PAGE 2 to 8 |
| WORKSHEET | PAGE 9 to 11 |
| LEGEND | PAGE 12 |
| DATA | PAGE 13-36 |
| RATIOS | PAGE 37 |
| NOTES | PAGE 38 |
| GRAPHS | PAGE 39 to 58 |

COUNCIL OF POST-SECONDARY LIBRARY DIRECTORS B.C. LIBRARY/LEARNING RESOURCE CENTRE SURVEY

DEFINITIONS (Revised June 21, 2013)

INTRODUCTION

This annual statistical survey is intended to provide a picture of the holdings and activities of Libraries in colleges, university/colleges, institutes, and universities of British Columbia for the fiscal year (**April 1 - March 31**). All information is based on the total count for one year.

The following activity, although under library jurisdiction in many institutions, is **excluded** from this report:

- audio-visual equipment distribution to classrooms
- audio-visual equipment maintenance
- Media production or instructional media services.

A word of caution:

Comparison among institutions should be made with the understanding that each library operates somewhat differently and counts activities within a context unique to the institution. In addition, as access to electronic information becomes more important, holdings information is not always readily quantifiable or entirely meaningful and expenditure information is not found within the same budget categories in each institutional library.

Note: Do not add text into any field that will be totalled automatically as this will prevent the system from performing this addition.

Note: use the "Explanatory Notes" section at the bottom of the survey to provide additional information or any variations from the norm.

1. TYPE OF LIBRARY

Self explanatory.

2. NUMBER OF CAMPUSES

Differentiate between those centres which have library staffing from those which are characterized as reading rooms and/or learning centres which have no staff or may have staff paid for by other parts of the institution.

- a. Number of campuses with library staff**
- b. Number of campuses without library staff**

3. USERS

FTE students: for sections a - f, this data will be completed for you based on data supplied by the Ministry of Advanced Education

g. FTE faculty:

- Provide FTE (not head count) of faculty employees (include librarians if applicable); approximate if actual number is not available.

Community Borrower Fee:

- do not include the number of community borrowers as this figure does not represent active users for many institutions; provide only the annual fee if applicable.

h. Is there a community borrowers fee?

i. \$\$ amount

4. LIBRARY PERSONNEL

- count all personnel in FTE terms (not head-counts).

a. FTE librarians:

- include all part-time and contract librarian hours;
- include Library Director whether this is an administrative position or not;
- include any positions funded by special grants.

b. FTE library staff:

- exclude personnel who are entirely devoted to AV equipment and media production/IMS activities.

c. FTE other professionals:

- include staff members who are not librarians in the strict sense of the terms such as computer experts, systems analysts or budget officers.

d. Subtotal – FTE Library Personnel: (system will total automatically)

- provide subtotal of personnel before counting student aides and work-study employees.

e. FTE student aides:

- include student aides and work-study employees.

f. Total FTE Library Personnel: (system will total automatically)

5.1. COLLECTIONS - PHYSICAL

- **Volumes:** items that are barcoded separately or intended to be circulated as one unit, (e.g. a 20-volume set of encyclopedias = 20 units, 2 CDs plus booklet in one package = 1 unit; book plus CD = 1 unit; set of slides in a binder or a folio = 1 unit).

a. Monographs:

- a volume is a physical unit of any printed or processed work contained in one binding, encasement or other clear distinction, which has been catalogued as part of the collection and given an individual barcode;
- **include** titles in microform or CD (not individual cards of fiche except when 1 card = 1 title);
- **include** annuals;
- **exclude** periodicals;
- use explanatory notes for any unusual inclusions (e.g. documents, technical reports, individually catalogued maps).

b. Videos & Films:

- count all physical video & film formats;
- count physical items (e.g. 2 film reels = 2 units, series of 24 videos = 24 units).

c. Other Audio formats:

- count all physical sound recordings (e.g. LP records, cassette tapes, compact disks);
- count items intended to be used together as one unit (e.g. opera on 2 CDs = 1 unit);
- if two or more media are included (e.g. print and cassette tape), count as a single unit all items to be used in conjunction with each other.

d. Other Visual formats:

- count all physical visual formats (e.g. slides, snapshots);
- do not count individual slides unless they do not form part of a set (i.e. 1 slide set = 1 unit);
- if two or more media are included (e.g. print & slides), count as a single unit all items meant to be used in conjunction with each other.

e. Back Issues Periodicals:

- **include** journals, magazines, and newspapers received in print, microform, or CD formats;
- count volumes if they are known, otherwise 1 year = 1 volume;
- **include** annual index volumes.

f. Total Volumes in Library Collection: (system will total automatically)

- add $a + b + c + d + e = f$

Periodicals:

g. Total Current Print Subscriptions:

- count titles of journals, magazines, and newspapers currently received in print, microform, or CD formats (e.g. Canadian Newdisc = 8 titles);
- **exclude** annuals (counted in **a**) above);
- **include** gift subscriptions and those being received on exchange;
- **include** departmental subscriptions only if they are accessible to the college community (i.e. listed in library catalogue and available for use);
- count duplicate subscriptions (i.e. if the library subscribes to two copies of a title count 2);
- **include** Statistics Canada periodicals if they are treated like a periodical;
- **exclude** subscriptions to electronic periodical indexes and abstracts.

5.2 COLLECTIONS – ELECTRONIC

a. Electronic Monographs:

- count the titles that would be monographs if issued in print format, i.e. non-serial publications of any length issued in electronic format instead of or in addition to, print format. Include books owned or leased by the library. Government publications are included as are free monographs on the Web catalogued in the OPAC or specifically linked to the library's web site.

b. Streaming Media:

- count streaming videos or other media listed in the library catalogue or linked to the library's web site, whether purchased, leased or free on the Web.

c. Electronic Serial Titles:

- report the total number of unique electronic serial titles that you currently acquire and to which you provide access;
- include both purchased and non-purchased titles;
- do not include duplicate counts of serial titles; report each title once, regardless of how many subscriptions or means of access you provide for that title – i.e. if a title is accessible through multiple databases, count it only once;
- include titles from aggregated packages;
- Electronic serials acquired as part of a bundle or an aggregated package should be counted at the title level, even if they are not catalogued, as long as the title is made accessible directly by the library (e.g. through a finding aid)

d. Total Electronic Titles in Collection: (system will total automatically)

- add $a + b + c = d$

6. USE

a. Reference transactions:

An information contact that involves the knowledge, use, recommendations, interpretation or instruction in the use of one or more information sources by a member of the library staff. Information sources include printed and non-printed materials, machine-readable databases (including computer-assisted instruction), catalogues and other holdings, records and, through communication or referral, other libraries and institution, and persons both inside and outside the library. Include information and referral services. If a contact includes both reference and directional services, it should be reported as one reference transaction. When a staff member utilizes information gained from a previous use of information sources to answer a question, report as a reference transaction, even if the source is not consulted again during this transaction. Duration should not be an element in determining whether a transaction is a reference transaction. Sampling of a typical week may be used to extrapolate for a full year. (CARL definition).

- count all questions handled (i.e. regular, and extended reference questions);
- **include** questions associated with electronic searching;
- **include** electronic reference questions;
- **include** real-time-reference interactions (i.e. virtual reference, AskAway);
- **exclude** questions associated specifically with a bibliographic instruction class;
- **exclude** directional questions as these will be counted separately.

This is the way this question will appear on the stats collection form

- 6a (i) Reference questions
- 6a (ii) Directional questions
- 6a (iii) Total

Library Instruction

b. Number of participants at group presentations:

- report total number of participants in the presentations - count all students receiving bibliographic instruction whether in tutorial groups, tours, or library skills classes;
- personal one-on-one instruction in the use of sources should be counted as a reference transaction.

c. Number of presentations to groups:

- report the total number of library instruction sessions during the year. Count sessions presented as part of formal bibliographic instruction programs including class presentations, orientation sessions and tours. If the library sponsors multi-session credit courses that meet several times over the course of a semester, each session should be counted. Presentations both on and off the premises should be included when they are sponsored by the library. If you are using sampling, please include a footnote;
- **include** internet research or database searching classes;
- **include** classes taught to faculty and other employee groups.

Circulation:

d. Direct:

- count all items which are charged out for use, whether the use is inside (e.g. reserve) or outside the library;
- **include** self/online renewals;
- **exclude** items charged out to other libraries on interlibrary loan (included in **g** below).

e. In-library use:

- count those items being used in the library and re-shelved by library employees, but that have not been charged out for use in the direct circulation transaction.

f. Gate Count:

- count all traffic upon exit from the library (usually provided via an electric eye on the library security system).

Interlibrary loan:

- count all items actually received and sent via interlibrary loan;
- **include** items received or sent via any delivery method and from or to any type of library (including agencies with library holdings) in any part of the world;
- all NET, MEC, OJAC, and fileserver project figures are supplied by the ELN office;
- **exclude** intercampus loans within your institution.

g. Interlibrary loans received (include all formats)

h. Interlibrary loans sent (include all formats)

7. LIBRARY EXPENSES (capital & operating)

For purposes of consistency “expenditures” means actual expenditures vs budgeted expenditures.

a. Personnel (salaries & benefits):

- count all salary & benefit expenditures for library personnel as listed in **4** above;
- **exclude** personnel not covered by this survey (e.g. AV equipment distribution, Media Production or IMS);
- **include** personnel working under special grant funding.

Collections - Physical:

b. Monographs:

- count all expenditures on items listed as monographs in 5.1a above.

- c. **Audio-Visual:**
 - count all expenditures on items listed in 5.1b + 5.1c + 5.1d above.
- d. **Current Print Periodicals:**
 - count all expenditures on current subscriptions to print periodicals and indexes as included in 5.1g above.
- e. **Subtotal Physical Collections: (system will total automatically)**
 - add $b + c + d = e$
- Collections – Electronic:**
- f. **Electronic Monographs**
 - count all expenditures on items listed in 5.2a above.
- g. **Streaming Media:**
 - count all expenditures on items listed in 5.2b above.
- h. **Electronic Serial Titles:**
 - count all expenditures on items listed in 5.2c above.
- 2012/2013: add the following column**
- i. **Other Electronic Resources:**
 - we have included an Other Category to capture electronic resources not captured elsewhere. These would include, but may not be limited to: statistics, A&I, databases of art works etc.
- j. **Subtotal Electronic Collections: (system will total automatically)**
 - add $f + g + h + i = j$
- k. **Special Funding Envelopes for Collections:**
 - **include** all expenditures from special funding sources e.g. one time capital grants.
- l. **Total Collections Expenditures: (system will total automatically)**
add $e + j + k = l$
- m. **Other:**
 - count all other library expenditures (i.e. those expenditures that are not related to personnel and collections);
 - **include** only those other costs (e.g. printing, postage, interlibrary loans, mileage, conferences, supplies, etc.) if they are paid by the library's budget;
 - use explanatory notes to indicate any variations from the norm.
- n. **Total Library Expenditures: (system will total automatically)**
 - add $a + l + m = n$

8. INSTITUTIONAL BUDGET

- a. **Base ministry grant:** as outlined in the grant allocation sent by the ministry to each institution in March (usually) for the next fiscal year.
- b. **Other operating revenues as reported from Audited Financial Statement for institution:**

- **include** all items that are considered in calculating your institution's operating budget;
 - **exclude** institutional capital (i.e. new building funds, upgrading of present buildings, roads etc.);
 - use explanatory notes to provide details on any exceptions or variations from the norm.
- c. Total Institutional Budget: (system will total automatically)**
- a+b

9. FACILITIES & HOURS (system will tally automatically for all sections)

a. Total library area in square meters:

- for each campus with library personnel provide library area in square meters (to convert from square ft. to square meters multiply sq. ft. by .0929, e.g. 30,000 sq. ft. x .0929 = 2787 sq. meters);
- **include** space for books and other library materials, space for storage of AV equipment if control of this equipment is the library's responsibility, library classrooms, study stations, seminar and study rooms, and workspace for library personnel;
- **exclude** areas used solely for janitorial, custodial and mechanical storage or services, lobbies, vestibules, building corridors, and other general access areas;
- add figures for each library to provide total for e.

b. Total number of seats:

- for each campus with library personnel count all study spaces for library users;
- **include** seats at computer workstations, equipment carrels, etc. **exclude** seats in staff areas, offices, meeting rooms, and other areas not normally occupied by users of library materials;
- add figures for each library to provide total for f.

c. Total hours open per week: (September – April)

- for each campus with library personnel count total operating hours per week;
- add figures for each library to provide total for g.

d. Total reference hours per week: (September – April)

- for each campus with library personnel count total hours of reference service provided;
- add figures for each library to provide total for h.

10. COMPUTING INFRASTRUCTURE

a. Number of public workstations:

- for each campus library, count all public workstations that have Internet access (these are also counted in 9b above as part of the seat count).

11. LIBRARY AUTOMATED SYSTEMS

- self explanatory;
- use explanatory notes for any variations.

2011-12: Add the following columns:

- Discovery Service (e.g. Summon, Ebsco Discovery Service, Primo);
- ERM: Electronic Resource Management (e.g. CUFTS);
- Link Resolver (e.g. SFX, CUFTS/Godot).

**COUNCIL OF POST-SECONDARY LIBRARY DIRECTORS B.C.
LIBRARY/LEARNING RESOURCES CENTRE SURVEY**

WORKSHEET FOR 2013/2014

1. TYPE OF LIBRARY

2. NUMBER OF CAMPUSES

- a. Number of Campuses with library staff:**
- b. Number of campuses without library staff:**

3. USERS

FTE students: for sections a – f, this data will be completed for you based on data supplied by the Ministry of Advanced Education

g. FTE faculty:

Community Borrower Fee:

h. Is there a community borrowers fee?

i. \$\$ amount:

4. LIBRARY PERSONNEL

a. FTE librarians:

b. FTE library staff:

c. FTE other professionals:

d. Subtotal – FTE Library Personnel: (system will total automatically)

e. FTE student aides:

f. Total FTE Library Personnel: (system will total automatically)

5.1 COLLECTIONS – PHYSICAL

a. Monographs:

b. Videos & Films:

c. Other Audio formats:

d. Other Visual formats:

e. Back Issues Periodicals:

f. Total Volumes in Library Collection: (system will total automatically)

Periodicals:

g. Total Current Print Subscriptions:

5.2 COLLECTIONS – ELECTRONIC

a. Electronic Monographs:

b. Streaming Media:

c. Electronic Serial Titles:

d. Total Electronic Titles in Collection: (system will total automatically)

6. USE

a. Reference transactions:

6a (i) Reference questions:

6a (ii) Directional questions:

6a (iii) Total:

Library Instruction:

b. Number of participants at group presentations:

Presentations to groups:

c. Number of presentations to groups:

Circulation:

d. Direct:

e. In-library use:

f. Gate Count:

Interlibrary loan:

g. Interlibrary loans received:

h. Interlibrary loans sent:

7. LIBRARY EXPENSES (capital & operating)

a. Personnel (salaries & benefits):

Collections – Physical:

b. Monographs:

c. Audio-Visual:

d. Current Print Periodicals:

e. Subtotal Physical Collections: (system will total automatically)

f. Electronic Monographs:

g. Streaming Media:

h. Electronics Serial Titles:

i. Other Electronic Resources:

j. Subtotal Electronic Collections: (system will total automatically)

k. Special Funding Envelopes for Collections:

l. Total Collections Expenditures: (system will total automatically)

m. Other:

n. Total Library Expenditures: (system will total automatically)

8. INSTITUTIONAL BUDGET

a. Base ministry grant:

b. Other operating revenues as reported from Audited Financial Statement for institution:

c. Total Institutional Budget: (system will total automatically)

9. FACILITIES & HOURS (system will tally automatically for all sections)

a. Total library area in square meters:

b. Total number of seats:

c. Total hours open per week: (September – April)

d. Total reference hours per week: (September – April)

10. COMPUTING INFRASTRUCTURE

a. Number of public workstations:

11. LIBRARY AUTOMATED SYSTEMS

• Cataloguing:

• Primary source of bibliographic records:

• Secondary source of bibliographic records:

• OPAC:

• Periodicals Check In:

• Acquisitions:

• Interlibrary Loans:

• Discovery Service (e.g. Summon, Ebsco Discovery Service, Primo):

• ERM: Electronic Resource Management (e.g. CUFTS):

• Link Resolver (e.g. SFX, CUFTS/Godot):

LEGEND

| | |
|-------|--|
| BCIT | BRITISH COLUMBIA INSTITUTE OF TECHNOLOGY |
| CAM | CAMOSUN COLLEGE |
| CAPU | CAPILANO UNIVERSITY |
| CNC | COLLEGE OF NEW CALEDONIA |
| COTR | COLLEGE OF THE ROCKIES |
| DOUG | DOUGLAS COLLEGE |
| ECUAD | EMILY CARR UNIVERSITY OF ART AND DESIGN |
| JI | JUSTICE INSTITUTE OF B.C. |
| KPU | KWANTLEN POLYTECHNIC UNIVERSITY |
| LC | LANGARA COLLEGE |
| NVIT | NICOLA VALLEY INSTITUTE OF TECHNOLOGY |
| NI | NORTH ISLAND COLLEGE |
| NL | NORTHERN LIGHTS COLLEGE |
| NW | NORTHWEST COMMUNITY COLLEGE |
| OC | OKANAGAN COLLEGE |
| QUC | QUEST UNIVERSITY CANADA |
| RR | ROYAL ROADS UNIVERSITY |
| SEL | SELKIRK COLLEGE |
| SFU | SIMON FRASER UNIVERSITY |
| TRU | THOMPSON RIVERS UNIVERSITY |
| TWU | TRINITY WESTERN UNIVERSITY |
| UBC | UNIVERSITY OF BRITISH COLUMBIA |
| UFV | UNIVERSITY OF THE FRASER VALLEY |
| UNBC | UNIVERSITY OF NORTHERN BRITISH COLUMBIA |
| UVIC | UNIVERSITY OF VICTORIA |
| VCC | VANCOUVER COMMUNITY COLLEGE |
| VIU | VANCOUVER ISLAND UNIVERSITY |

| 1. LIBRARY | | | | | 2. NUMBER OF CAMPUSES | |
|--------------|---------------------------------------|--------------------------|--------------------|--------------|------------------------------------|---------------------------------------|
| | | | | | a | b |
| | Name of Library | Name of Library Director | Statistics contact | Library Type | No. of Campuses with Library Staff | No. of Campuses without Library Staff |
| BCIT | BCIT | David Pepper | David Pepper | Institute | 3 | 2 |
| CAM | Camosun College | Sybil Harrison | Sybil Harrison | College | 2 | 0 |
| CAPU | Capilano University | Grace Makarewicz | Dianne Cottrell | University | 1 | 2 |
| CNC | College of New Caledonia | Katherine Plett | Katherine Plett | College | 4 | 2 |
| COTR | College of the Rockies | Shahida Rashid | Shahida Rashid | College | 1 | 5 |
| DOUG | Douglas College | Debbie Schachter | Debbie Schachter | College | 2 | |
| ECUAD | Emily Carr University of Art & Design | James Rout | James Rout | University | 1 | 0 |
| JI | Justice Institute of B.C. | April Haddad | April Haddad | Institute | 1 | 5 |
| KPU | Kwantlen Polytechnic University | Todd Mundle | Ann McBurnie | University | 4 | 0 |
| LC | Langara College | Patricia Cia | Patricia Cia | College | 1 | 0 |
| NVIT | Nicola Valley Institute of Technology | Linda Epps | Linda Epps | Institute | 2 | 0 |
| NI | North Island College | Mary Anne Guenther | Mary Anne Guenther | College | 4 | |
| NL | Northern Lights College | Dawna Turcotte | Dawna Turcotte | College | 3 | 4 |
| NW | Northwest Community College | Melanie Wilke | Melanie Wilke | College | 3 | 3 |

| 1. LIBRARY | | | | | 2. NUMBER OF CAMPUSES | |
|------------|---|--------------------------|--------------------|--------------|------------------------------------|---------------------------------------|
| | | | | | a | b |
| | Name of Library | Name of Library Director | Statistics contact | Library Type | No. of Campuses with Library Staff | No. of Campuses without Library Staff |
| OC | Okanagan College | Ross Tyner | Ross Tyner | College | 4 | 0 |
| QUC | Quest University Canada | Venessa Wallsten | Venessa Wallsten | University | 1 | 0 |
| RR | Royal Roads University | Rosie Croft | William Meredith | University | 1 | 0 |
| SEL | Selkirk College | Gregg Currie | Gregg Currie | College | 3 | 5 |
| SFU | Simon Fraser University | Gwen Bird | Natalie Gick | University | 3 | 0 |
| TRU | Thompson Rivers University | Brenda Mathenia | Joanne Matthews | University | 2 | |
| TWU | Trinity Western University | Ted Goshulak | Ted Goshulak | University | 1 | 0 |
| UBC | University of British Columbia | Ingrid Parent | Jeremy Buhler | University | 2 | 0 |
| UFV | University of the Fraser Valley | Kim Isaac | Kim Isaac | University | 2 | 5 |
| UNBC | University of Northern British Columbia | Allan Wilson | Heather Empey | University | 1 | 4 |
| UVIC | University of Victoria | Jonathan Bengston | Chelsea Garside | University | 1 | 0 |
| VCC | Vancouver Community College | Tim Atkinson | Tim Atkinson | College | 2 | 0 |
| VIU | Vancouver Island University | David Witty (Acting) | Kathleen Reed | University | 3 | 1 |

3. USERS

| | a | b | c | d | a+c=e | b+d=f | g | h | i |
|--------------|--|------------------------|--|--|---------------------------|---------------------------|-------------|-------------------------------------|-----------------|
| | FTE Students: NOTE - for sections a - f, this data has been completed for you based on the data supplied by the Ministry of Advanced Education | | | | | | Faculty | Community Borrowers | |
| | FTE AVED Ministry funded | FTE Students (audited) | ITA (Foundation + Apprenticeship) Funded | ITA (Foundation + Apprenticeship) Actual | Service plan total funded | Service plan total Actual | FTE faculty | Is there a Community Borrowers fee? | Fee \$\$ amount |
| BCIT | 11,812.00 | 13,335.00 | 5,391.00 | 6,241.00 | 17,203.00 | 19,576.00 | 13,334.70 | Yes | 50 |
| CAM | 7,213.00 | 7,024.00 | 1,590.00 | 1,871.00 | 8,803.00 | 8,895.00 | 502.34 | No | |
| CAPU | 5,450.00 | 5,209.00 | | | 5,450.00 | 5,209.00 | 388.14 | Yes | 25 |
| CNC | 3,146.00 | 2,022.00 | 1,233.00 | 1,320.00 | 4,379.00 | 3,342.00 | 225.00 | No | |
| COTR | 1,748.00 | 1,750.00 | 439.00 | 520.00 | 2,187.00 | 2,270.00 | 114.40 | No | |
| DOUG | 8,354.00 | 9,097.00 | | | 8,354.00 | 9,097.00 | 510.00 | Yes | 25 |
| ECUAD | 1,391.00 | 1,500.00 | | | 1,391.00 | 1,500.00 | 92.45 | Yes | 60 |
| JI | 2,377.00 | 2,597.00 | | | 2,377.00 | 2,597.00 | 110.00 | No | |
| KPU | 9,097.00 | 9,309.00 | 1,024.00 | 1,173.00 | 10,121.00 | 10,482.00 | 585.60 | No | |
| LC | 7,056.00 | 7,232.00 | | | 7,056.00 | 7,232.00 | 433.81 | semi-annual | 15 |
| NVIT | 523.00 | 554.00 | | | 523.00 | 554.00 | | No | |
| NI | 2,198.00 | 1,947.00 | 579.00 | 570.00 | 2,777.00 | 2,517.00 | 160.00 | No | |
| NL | 1,491.00 | 831.00 | 515.00 | 544.00 | 2,006.00 | 1,375.00 | 95.75 | No | |
| NW | 1,696.00 | 1,126.00 | 410.00 | 405.00 | 2,106.00 | 1,530.00 | 102.20 | No | |

3. USERS

| | a | b | c | d | a+c=e | b+d=f | g | h | i |
|-------------|--|------------------------|--|--|---------------------------|---------------------------|-------------|-------------------------------------|-----------------|
| | FTE Students: NOTE - for sections a - f, this data has been completed for you based on the data supplied by the Ministry of Advanced Education | | | | | | Faculty | Community Borrowers | |
| | FTE AVED Ministry funded | FTE Students (audited) | ITA (Foundation + Apprenticeship) Funded | ITA (Foundation + Apprenticeship) Actual | Service plan total funded | Service plan total Actual | FTE faculty | Is there a Community Borrowers fee? | Fee \$\$ amount |
| OC | 4,851.00 | 5,070.00 | 1,968.00 | 1,951.00 | 6,819.00 | 7,021.00 | 396.00 | Yes | 20 |
| QUC | | | | | | 650.00 | 45.00 | No | |
| RR | 1,980.00 | 2,440.00 | | | 1,980.00 | 2,440.00 | 57.00 | Yes | 25 |
| SEL | 2,312.00 | 1,755.00 | 358.00 | 440.00 | 2,670.00 | 2,195.00 | 173.00 | No | |
| SFU | 20,203.00 | 22,701.00 | | | 20,203.00 | 22,701.00 | 941.40 | Yes | 100 |
| TRU | 8,123.00 | 8,474.00 | 1,261.00 | 1,438.00 | 9,384.00 | 9,912.00 | 523.00 | Yes | 25 |
| TWU | | | | | | 2,111.00 | 125.00 | Yes | 60 |
| UBC | 42,237.00 | 45,353.00 | 12.00 | | 42,249.00 | 45,353.00 | 4,456.00 | Yes | 120 |
| UFV | 6,678.00 | 6,755.00 | 386.00 | 463.00 | 7,064.00 | 7,218.00 | 474.49 | Yes | 25 |
| UNBC | 3,455.00 | 2,833.00 | | | 3,455.00 | 2,833.00 | 189.00 | Yes | 25 |
| UVIC | 16,528.00 | 16,649.00 | | | 16,528.00 | 16,649.00 | 830.9 | No | |
| VCC | 6,537.00 | 6,112.00 | 1,481.00 | 1,471.00 | 8,018.00 | 7,583.00 | 417.20 | No | |
| VIU | 6,678.00 | 5,873.00 | 1,131.00 | 1,096.00 | 7,810.00 | 6,969.00 | 502.57 | Yes | 25 |

| | 4. LIBRARY PERSONNEL | | | | | |
|--------------|----------------------|-------------------|-------------------------|---|-------------------|--|
| | a | b | c | a+b+c=d | e | d + e = f |
| | FTE Librarians | FTE Library Staff | FTE Other Professionals | FTE Personnel (system will total automatically) | FTE Student Aides | Total Personnel in FTE (system will total automatically) |
| BCIT | 10.00 | 19.61 | 2.00 | 31.61 | | 31.61 |
| CAM | 5.38 | 12.50 | 2.50 | 20.38 | 0.25 | 20.63 |
| CAPU | 7.35 | 12.37 | | 19.72 | | 19.72 |
| CNC | 4.00 | 8.20 | | 12.20 | | 12.20 |
| COTR | 1.40 | 5.25 | | 6.65 | | 6.65 |
| DOUG | 10.80 | 26.00 | | 36.80 | | 36.80 |
| ECUAD | 3.60 | 7.16 | | 10.76 | 0.38 | 11.14 |
| JI | 4.00 | 3.20 | | 7.20 | | 7.20 |
| KPU | 16.41 | 35.79 | 1.65 | 53.85 | 0.98 | 54.83 |
| LC | 10.81 | 15.84 | 1.00 | 27.65 | 0.75 | 28.40 |
| NVIT | 1.00 | 2.00 | | 3.00 | | 3.00 |
| NI | 2.00 | 7.50 | | 9.50 | 1.00 | 10.50 |
| NL | 1.00 | 4.79 | | 5.79 | | 5.79 |
| NW | 2.90 | 4.00 | | 6.90 | | 6.90 |

| | 4. LIBRARY PERSONNEL | | | | | |
|------|----------------------|-------------------|-------------------------|---|-------------------|--|
| | a | b | c | a+b+c=d | e | d + e = f |
| | FTE Librarians | FTE Library Staff | FTE Other Professionals | FTE Personnel (system will total automatically) | FTE Student Aides | Total Personnel in FTE (system will total automatically) |
| OC | 9.00 | 18.00 | | 27.00 | 1.00 | 28.00 |
| QUC | 2.00 | 3.00 | | 5.00 | 2.00 | 7.00 |
| RR | 4.82 | 7.20 | 3.80 | 15.82 | | 15.82 |
| SEL | 3.00 | 6.00 | | 9.00 | | 9.00 |
| SFU | 49.48 | 73.71 | 21.27 | 144.46 | 10.15 | 154.61 |
| TRU | 9.79 | 13.70 | | 23.49 | 0.46 | 23.95 |
| TWU | 5.00 | 3.50 | | 8.50 | 4.00 | 12.50 |
| UBC | 87.60 | 141.40 | 43.40 | 272.40 | 39.50 | 311.90 |
| UFV | 8.22 | 16.18 | | 24.40 | 0.61 | 25.01 |
| UNBC | 5.40 | 13.60 | 2.60 | 21.60 | 1.60 | 23.20 |
| UVIC | 29.00 | 88.00 | 9.00 | 126.00 | 9.83 | 135.83 |
| VCC | 8.50 | 20.90 | | 29.40 | 0.55 | 29.95 |
| VIU | 8.00 | 12.57 | | 20.57 | | 20.57 |

| 5. COLLECTIONS | | | | | | | | | | | | |
|----------------|----------------------------|----------------|---------------------|----------------------|-------------------------|---|-----------------------------------|------------------------------|-----------------|--------------------------|---|--|
| | a | b | c | d | e | a+b+c+d+e = f | g | a | b | c | a+b+c=d | |
| | 5.1 COLLECTIONS - PHYSICAL | | | | | | | 5.2 COLLECTIONS - ELECTRONIC | | | | |
| | Monographs | Videos & Films | Other Audio Formats | Other Visual Formats | Back Issues Periodicals | Total Volumes in Library Collection (system will total automatically) | Total Current Print Subscriptions | Electronic Monographs | Streaming Media | Electronic Serial Titles | Total Electronic Titles in Collection (system will total automatically) | |
| BCIT | 115,930 | 6,425 | 89 | 305 | | 122,749 | 361 | 34,172 | 4,947 | 32,731 | 71,850 | |
| CAM | 50,628 | 3,315 | 81 | 597 | 40,481 | 95,102 | 207 | 28,583 | 1,480 | 161 | 30,224 | |
| CAPU | 106,405 | 4,647 | 2,422 | | 10,441 | 123,915 | 212 | 166,330 | 118,884 | 59,198 | 344,412 | |
| CNC | 148,074 | 10,219 | 144 | 240 | 22,720 | 181,397 | 311 | 9,811 | 19 | 40,356 | 50,186 | |
| COTR | 39,306 | 3,865 | 115 | 84 | 4,088 | 47,458 | 43 | 92,328 | 4218 | 97,426 | 193,972 | |
| DOUG | 157,812 | 13,508 | 6,929 | 788 | 12,089 | 191,126 | 777 | 20,210 | 18,193 | 51,086 | 89,489 | |
| ECUAD | 36,063 | 4,109 | 872 | 124,750 | 5,842 | 171,636 | 205 | 853 | 6,000 | 54,382 | 61,235 | |
| JI | 20,362 | 2,510 | 159 | 12 | 4,797 | 27,840 | 125 | 121,020 | 8,732 | 23,506 | 153,258 | |
| KPU | 205,383 | 4,785 | 2,761 | 51 | 17,489 | 230,469 | 500 | 160,380 | 22,491 | 51,463 | 234,334 | |
| LC | 79,673 | 5,959 | 755 | | 0 | 86,387 | 184 | 70,874 | 13,626 | 30,190 | 114,690 | |
| NVIT | 14,760 | 1,141 | | | 62 | 15,963 | 7 | 86,935 | 3,000 | 58,660 | 148,595 | |
| NI | 31,832 | 2,568 | 44 | | 1,254 | 35,698 | 220 | 134,290 | 20,748 | 57,238 | 212,276 | |
| NL | 22,988 | 2,504 | | 3 | 364 | 25,859 | 90 | 148,469 | 14,280 | 41,017 | 203,766 | |
| NW | 50,099 | 4,152 | 190 | 1,140 | 24,000 | 79,581 | 141 | 2,005 | 427 | 37,135 | 39,567 | |

| 5. COLLECTIONS | | | | | | | | | | | | |
|----------------|----------------------------|----------------|---------------------|----------------------|-------------------------|---|-----------------------------------|------------------------------|-----------------|--------------------------|---|--|
| | a | b | c | d | e | a+b+c+d+e = f | g | a | b | c | a+b+c=d | |
| | 5.1 COLLECTIONS - PHYSICAL | | | | | | | 5.2 COLLECTIONS - ELECTRONIC | | | | |
| | Monographs | Videos & Films | Other Audio Formats | Other Visual Formats | Back Issues Periodicals | Total Volumes in Library Collection (system will total automatically) | Total Current Print Subscriptions | Electronic Monographs | Streaming Media | Electronic Serial Titles | Total Electronic Titles in Collection (system will total automatically) | |
| OC | 144,574 | 9,613 | 624 | | 0 | 154,811 | 252 | 64,027 | 7,749 | 56,435 | 128,211 | |
| QUC | 12,622 | 793 | | | 5,100 | 18,515 | 68 | 180,420 | | | 180,420 | |
| RR | 45,941 | 528 | | | 12,297 | 58,766 | 84 | 263,379 | 2,265 | 58,644 | 324,288 | |
| SEL | 57,871 | 1,464 | 650 | 50 | 5,500 | 65,535 | 297 | 12,338 | 17,000 | 17,150 | 46,488 | |
| SFU | 2,446,112 | 15,552 | 16,622 | 219,726 | 298,880 | 2,996,892 | 3,012 | 1,035,573 | 2,928,160 | 86,429 | 4,050,162 | |
| TRU | 219,790 | 13,375 | 709 | 416 | 30,597 | 264,887 | 293 | 138,464 | 1,607 | 24,009 | 164,080 | |
| TWU | 223,710 | 4,425 | 1,110 | | 87,500 | 316,745 | 500 | 181,767 | 3,000 | 13,429 | 198,196 | |
| UBC | 4,583,395 | 51,134 | 63,632 | 216,217 | 742,570 | 5,656,948 | 7,005 | 1,843,028 | | 331,343 | 2,174,371 | |
| UFV | 179,282 | 10,652 | 379 | 619 | 29,622 | 220,554 | 331 | 173,019 | 13,991 | 58,038 | 245,048 | |
| UNBC | 449,713 | 4,574 | 190 | 476 | 225,594 | 680,547 | 84 | 133,708 | 12,989 | 56,484 | 203,181 | |
| UVIC | 1,755,239 | 16,292 | 53,346 | | 395,173 | 2,220,050 | 9,715 | 749,352 | 28,851 | 136,196 | 914,399 | |
| VCC | 52,533 | 6,296 | 5,817 | 2 | 8,704 | 73,352 | 178 | 164,139 | 290,886 | 43,408 | 498,433 | |
| VIU | 300,841 | 8,812 | 6,167 | 299 | | 316,119 | 85 | 613,912 | 31,892 | 77,830 | 723,634 | |

| | 6. USE | | | | | | | | | |
|--------------|------------------------|-----------------------|---|---|-----------------------------------|---------------------|-----------------------------|------------|---|---|
| | a (i) | a (ii) | a(i)+a(ii)=a (iii) | b | c | d | e | f | g | h |
| | Reference Transactions | | | Library Instruction | | Circulation | | | | |
| | Reference Questions | Directional questions | Total Reference Transactions (will total automatically) | Number of Participants at group presentations | Number of Presentations to groups | Circulation: Direct | Circulation: In-Library Use | Gate Count | Interlibrary loans received (include all formats) | Interlibrary loans sent (include all formats) |
| BCIT | 4,133 | 6,304 | 10,437 | 4,231 | 216 | 48,845 | 14,614 | 717,090 | 835 | 827 |
| CAM | 10,702 | 8,516 | 19,218 | 6,029 | 242 | 36,038 | 2,982 | 527,274 | 1,074 | 438 |
| CAPU | 2,762 | 2,698 | 5,460 | 3,970 | 167 | 22,949 | | 456,284 | 468 | 363 |
| CNC | 12,889 | | 12,889 | 1,478 | 99 | 16,545 | 14,890 | 141,724 | 341 | 522 |
| COTR | 2,144 | 2,429 | 4,573 | 649 | 44 | 7,214 | 4,593 | 101,907 | 89 | 82 |
| DOUG | 15,131 | 18,889 | 34,020 | 7,933 | 283 | 185,759 | 9,156 | 780,551 | 750 | 802 |
| ECUAD | 2,278 | 4,185 | 6,463 | 1,779 | 123 | 27,257 | | 159,998 | 195 | 280 |
| JI | 2,307 | 1,704 | 4,011 | 974 | 56 | 4,080 | 555 | 38,191 | 112 | 445 |
| KPU | 9,773 | 11,172 | 20,945 | 8,160 | 385 | 54,323 | 13,283 | 989,719 | 1,700 | 1,278 |
| LC | 13,440 | 8,166 | 21,606 | 8,998 | 424 | 44,491 | 19,491 | 624,913 | 2,181 | 519 |
| NVIT | 1,598 | 1,230 | 2,828 | 248 | 25 | 1,250 | 250 | 33,714 | 103 | 79 |
| NI | 1,760 | | 1,760 | 1,144 | | 9,745 | 1,950 | 116,623 | 1,134 | 313 |
| NL | 441 | 1,660 | 2,101 | 380 | 36 | 4,116 | | 50,794 | 126 | 127 |
| NW | 1,278 | 1,466 | 2,744 | 734 | 57 | 9,580 | | 57,159 | 383 | 259 |

| | 6. USE | | | | | | | | | |
|------|------------------------|-----------------------|---|---|-----------------------------------|---------------------|-----------------------------|------------|---|---|
| | a (i) | a (ii) | a(i)+a(ii)=a (iii) | b | c | d | e | f | g | h |
| | Reference Transactions | | | Library Instruction | | Circulation | | | | |
| | Reference Questions | Directional questions | Total Reference Transactions (will total automatically) | Number of Participants at group presentations | Number of Presentations to groups | Circulation: Direct | Circulation: In-Library Use | Gate Count | Interlibrary loans received (include all formats) | Interlibrary loans sent (include all formats) |
| OC | 9,375 | 3,763 | 13,138 | 5,691 | 305 | 45,995 | | 330,828 | 615 | 746 |
| QUC | 627 | 1,138 | 1,765 | 626 | 26 | 627 | 1,249 | 149,558 | 469 | |
| RR | 2,886 | 2,812 | 5,698 | 1,213 | 45 | 15,469 | 1,119 | 44,574 | 406 | 156 |
| SEL | 985 | 561 | 1,546 | 612 | 41 | 12,429 | 1,830 | 98,111 | 233 | 387 |
| SFU | 62,724 | 37,056 | 99,780 | 24,295 | 953 | 575,472 | 122,928 | n/a | 7,504 | 10,651 |
| TRU | 7,388 | 2,290 | 9,678 | 3,821 | 191 | 49,947 | 9,673 | 201,704 | 2,099 | 1,067 |
| TWU | 3,237 | 250 | 3,487 | 2,750 | 55 | 69,204 | | 150,439 | 636 | 236 |
| UBC | 54,647 | 60,282 | 114,929 | 35,638 | 1,464 | 1,470,112 | 90,280 | 3,745,028 | 7,898 | 23,428 |
| UFV | 10,173 | 8,243 | 18,416 | 6,075 | 243 | 61,598 | 6,138 | 421,843 | 1,304 | 844 |
| UNBC | 1,827 | 194 | 2,021 | 3,687 | 191 | 22,946 | n/a | 544,665 | 2,103 | 1,000 |
| UVIC | 23,759 | 20,847 | 44,606 | 12,963 | 645 | 218,712 | 99,250 | 1,124,462 | 7,725 | 6,603 |
| VCC | 19,505 | 9,875 | 29,380 | 5,737 | 302 | 67,899 | 24,432 | 274,535 | 364 | 524 |
| VIU | 7,339 | 2,594 | 9,933 | 3,989 | 181 | 40,062 | | 355,634 | 1,786 | 998 |

| | 7. LIBRARY EXPENSES (CAPITAL AND OPERATING) | | | | | | | | |
|--------------|---|------------|--------------|------------------------------|--|--------------------------|--------------------|-----------------------------|-------------------------------|
| | a | b | c | d | b + c + d = e | f | g | h | i |
| | Collections - Physical | | | | | Collections - Electronic | | | |
| | Personnel (Salaries and benefits) | Monographs | Audio-Visual | Current Print Periodicals | Subtotal Physical Collections (system will total automatically) | Electronic Monographs | Streaming Media | Electronic Serial Titles | Other Electronic Resources |
| BCIT | 2,553,192.00 | 247,611.00 | | 132,005.00 | 379,616.00 | 451,560.00 | | | |
| CAM | 1,569,875.89 | 105,583.00 | \$32,859.28 | \$45,545.96 | 183,988.24 | \$29,642.00 | | | 142,364.49 |
| CAPU | 1,139,066.34 | 73,544.90 | 13,224.75 | 22,172.60 | 108,942.25 | 32,875.45 | 13,247.07 | 166,963.26 | 9,150.68 |
| CNC | 804,544.00 | 89,712.00 | | 72,057.00 | 161,769.00 | | 1,694.00 | 52,280.00 | 565.00 |
| COTR | 402,040.15 | 13,764 | 3840 | 2593 | 20,197.00 | 2,565.00 | 4,863.00 | 36,287.00 | 10,356.00 |
| DOUG | 2,495,800.00 | 123,288.00 | 42,853.00 | 88,873.00 | 255,014.00 | 91,341.00 | 7,673.00 | 144,031.00 | |
| ECUAD | 674,716.00 | 55,039.00 | | 24,225.00 | 79,264.00 | 9,162.00 | 1,027.00 | 61,289.00 | 7,020.00 |
| JI | 525,379.00 | 40,156.00 | 22,267.00 | 41,408.00 | 103,831.00 | 16,384.00 | 1,409.00 | 48,508.00 | 16,902.00 |
| KPU | 3,753,691 | 267,236 | 43,628 | 109,666 | 420,530.00 | 34,534.00 | 21,868.00 | 578,883.00 | 7,169.00 |
| LC | 1,976,324.83 | 55,677.62 | 24,181.14 | 37,585.70 | 117,444.46 | 47,812.59 | 15,924.80 | 105,736.29 | 32,229.37 |
| NVIT | 150,000.00 | | | | | | | | |
| NI | 474,769.00 | 18,784.00 | 4,149.00 | 14,451.00 | 37,384.00 | 6,163.00 | 13,127.00 | 43,868.00 | |
| NL | 360,312.85 | 12,120.32 | 6,443.34 | 3,434.00 | 21,997.66 | 10,100.33 | 5,565.19 | 37,052.43 | |
| NW | 533,751.00 | 42,227.00 | 28,491.00 | 13,189.00 | 83,907.00 | 458.00 | 434.00 | 23,960.00 | 1,494.00 |

| 7. LIBRARY EXPENSES (CAPITAL AND OPERATING) | | | | | | | | | |
|---|---|--------------|--------------|------------------------------|--|--------------------------|--------------------|-----------------------------|-------------------------------|
| | a | b | c | d | b + c + d = e | f | g | h | i |
| | Collections - Physical | | | | | Collections - Electronic | | | |
| | Personnel (Salaries and benefits) | Monographs | Audio-Visual | Current Print Periodicals | Subtotal Physical Collections (system will total automatically) | Electronic Monographs | Streaming Media | Electronic Serial Titles | Other Electronic Resources |
| OC | 1,793,603.57 | 98,986.51 | 40,071.18 | 32,309.58 | 171,367.27 | 52,778.63 | 5,383.92 | 238,009.20 | 21,811.14 |
| QUC | 288,910.00 | 35,000.00 | 3,000.00 | 9,700.00 | 47,700.00 | 11,000.00 | | | 75,000.00 |
| RR | 989,399.00 | 21,201.00 | 167 | 9027 | 30,395.00 | 79,761.00 | 3,695.00 | 298,149.0 | 87,241.0 |
| SEL | 592,199.00 | 16,860.00 | 3,658.00 | 43,985.00 | 64,503.00 | 1,929.00 | 11,444.00 | 38,199.00 | 4,275.00 |
| SFU | 10,860,745.77 | 1,210,820.00 | 39,623.00 | 303,319.00 | 1,553,762.00 | 1,081,617.00 | 120,277.00 | 4,228,807.00 | 1,448,619.00 |
| TRU | 1,684,497.00 | 96,806.00 | | 106,811.00 | 203,617.00 | 138,464.00 | 1,607.00 | 24,009.00 | 382,040.00 |
| TWU | | | | | | | | | |
| UBC | 20,784,107.00 | 3,592,715.98 | | 1,713,786.66 | 5,306,502.64 | 1,059,375.04 | | 11,373,045.04 | |
| UFV | 1,818,072.00 | 309,429.71 | 6,558.53 | 75,365.08 | 391,353.32 | 24,278.69 | 17,208.79 | 405,853.49 | 260,399.27 |
| UNBC | 1,199,375.00 | 246,266.38 | 15,145.79 | 23,322.74 | 284,734.91 | 23,257.66 | 10,098.57 | 1,038,264.72 | 368,111.66 |
| UVIC | 7,976,474.00 | 1,021,209 | | 988,200 | 2,009,409.00 | 685,798.00 | | 4,467,309.00 | |
| VCC | 2,319,324.00 | 132,136 | | 35,176.00 | 167,312.00 | 18,667.00 | 38,024.00 | 68,532.00 | 16,949.00 |
| VIU | 1,500,686.00 | 215,786.00 | | 13,042.00 | 228,828.00 | 103,930.84 | 22,864.87 | 661,410.00 | |

| | | | | | | 8. INSTITUTIONAL BUDG | |
|-------|---|---|---|------------|--|--------------------------|---|
| | f + g + h + l = j | k | e + j + k = l | m | a + l + m = n | a | b |
| | Subtotal Electronic Collections (system will total automatically) | Special Funding Envelopes for Collections | Total Collection Expenditures (system will total automatically) | Other | Total Library Expenditures (system will total automatically) | Base Grant from Ministry | Other operating revenues as reported from Audited Financial Statement for institution |
| BCIT | 451,560.00 | 16,625.00 | 847,801.00 | | 3,400,993.00 | 134,194,007.00 | 145,646,456.00 |
| CAM | 172,006.49 | | 355,994.73 | 25,194.54 | 1,951,065.16 | 59,077,596.00 | 54,417,819.00 |
| CAPU | 222,236.46 | | 331,178.71 | 111,303.43 | 1,581,548.48 | 37,686,478.00 | 49,456,722.00 |
| CNC | 54,539.00 | | 216,308.00 | 51,420.00 | 1,072,272.00 | 29,191,171.00 | 4,069,726.00 |
| COTR | 54,071.00 | | 74,268.00 | | 476,308.15 | 15,638,335.00 | 7,706,497.00 |
| DOUG | 243,045.00 | | 498,059.00 | | 2,993,859.00 | 58,208,798.00 | 65,975,435.00 |
| ECUAD | 78,498.00 | | 157,762.00 | | 832,478.00 | 13,309,329.00 | 12,830,236.00 |
| JI | 83,203.00 | | 187,034.00 | 37,795.00 | 750,208.00 | 11,529,449.00 | 31,477,396.00 |
| KPU | 642,454.00 | 22,220.00 | 1,085,204.00 | 224,586.00 | 5,063,481.00 | 67,135,859.00 | 73,431,849.00 |
| LC | 201,703.05 | | 319,147.51 | 87,780.95 | 2,383,253.29 | 46,582,999.00 | 54,811,908.00 |
| NVIT | | | | | 150,000.00 | 7,426,861.00 | 4,293,950.00 |
| NI | 63,158.00 | | 100,542.00 | 70,239.00 | 645,550.00 | 24,329,588.00 | 14,618,035.00 |
| NL | 52,717.95 | | 74,715.61 | | 435,028.46 | 19,161,080.00 | 14,599,564.00 |
| NW | 26,346.00 | | 110,253.00 | 95,667.00 | 739,671.00 | 17,400,000 | 16,600,000 |

| | | | | | | 8. INSTITUTIONAL BUDG | |
|------|---|---|---|--------------|--|--------------------------|---|
| | f + g + h + l = j | k | e + j + k = l | m | a + l + m = n | a | b |
| | Subtotal Electronic Collections (system will total automatically) | Special Funding Envelopes for Collections | Total Collection Expenditures (system will total automatically) | Other | Total Library Expenditures (system will total automatically) | Base Grant from Ministry | Other operating revenues as reported from Audited Financial Statement for institution |
| OC | 317,982.89 | | 489,350.16 | 134,119.39 | 2,417,073.12 | 46,909,202.00 | 47,636,862.00 |
| QUC | 86,000.00 | | 133,700.00 | | 422,610.00 | | |
| RR | 468,846.00 | | 499,241.00 | | 1,488,640.00 | 17,808,598 | 42,993,120 |
| SEL | 55,847.00 | | 120,350.00 | 13,469.00 | 726,018.00 | 27,159,937.00 | 15,963,902.00 |
| SFU | 6,879,320.00 | | 8,433,082.00 | 2,625,859.80 | 21,919,687.57 | 227,373,000.00 | 407,452,000.00 |
| TRU | 546,120.00 | | 749,737.00 | 217,173.00 | 2,651,407.00 | 78,468,000.00 | 98,232.00 |
| TWU | | | | | | | |
| UBC | 12,432,420.08 | | 17,738,922.72 | 6,762,244.70 | 45,285,274.42 | 594,460,000.00 | 350,237,000 |
| UFV | 707,740.24 | | 1,099,093.56 | 130,791.36 | 3,047,956.92 | 57,529,912.00 | 57,758,034.00 |
| UNBC | 1,439,732.61 | | 1,724,467.52 | 366,169.48 | 3,290,012.00 | 47,262,000.00 | 30,283,000.00 |
| UVIC | 5,153,107.00 | | 7,162,516.00 | | 15,138,990.00 | 188,824,000.00 | 128,923,000 |
| VCC | 142,172.00 | | 309,484.00 | 120,000.00 | 2,748,808.00 | 54,490,000.00 | 27,500,000.00 |
| VIU | 788,205.71 | | 1,017,033.71 | 123,840.00 | 2,641,559.71 | 61,039,421.00 | 72,101,200.00 |

| ET | | | | | | | | | |
|-----------|----------------------------|----------------------------|-----------------------------|-----------------------|---|--|----------------|-----------------------------|-----------------------|
| a + b = c | | a | | b | | c | | d | |
| | | | | | | | | | |
| | Total Institutional Budget | Campus Name | Total area in square meters | Total number of seats | Total hours open per week (Sept. - April) | Total reference hours per week (Sept. - April) | Campus Name | Total area in square meters | Total number of seats |
| BCIT | 279,840,463.00 | Burnaby | 1,722.00 | 851.00 | 168.00 | 61.50 | BMC | 232.00 | 53.00 |
| CAM | 113,495,415.00 | Lansdowne | 2,250.00 | 398.00 | 73.00 | 60.00 | Interurban | 1,139.00 | 191.00 |
| CAPU | 87,143,200.00 | North Vancouver | 2,388.00 | 492.00 | 80.00 | 46.50 | | | |
| CNC | 33,260,897.00 | Prince George | 2,300.00 | 257.00 | 72.00 | 35.00 | | | |
| COTR | 23,344,832.00 | Cranbrook | 1,207.73 | 146.00 | 67.00 | 47.00 | | | |
| DOUG | 124,184,233.00 | New Westminster | 2,836.00 | 418.00 | 69.00 | 62.00 | David Lam | 2,116.00 | 366.00 |
| ECUAD | 26,139,565.00 | University of Art + Design | 992.00 | 101.00 | 70.00 | 62.00 | | | |
| JI | 43,006,845.00 | New Westminster | 654.00 | 87.00 | 64.00 | 64.00 | | | |
| KPU | 140,567,708.00 | Cloverdale | 546.00 | 82.00 | 60.00 | 12.00 | Langley | 1,190.00 | 224.00 |
| LC | 101,394,907.00 | Langara College | 4,743.00 | 784.00 | 76.00 | 67.00 | | | |
| NVIT | 11,720,811.00 | Merritt | 484.00 | 85.00 | 66.00 | 66.00 | Vancouver | 100.00 | 16.00 |
| NI | 38,947,623.00 | Comox Valley | 591.00 | 116.00 | 60.00 | 60.00 | Campbell River | 280.00 | 69.00 |
| NL | 33,760,644.00 | Dawson Creek | 420.00 | 46.00 | 50.00 | 35.00 | Fort St. John | 350.00 | 54.00 |
| NW | 34,000,000.00 | Terrace | 903.00 | 80.00 | 69.00 | 42.00 | Prince Rupert | 389.00 | 59.00 |

| ET | | | | | | | | | |
|------|----------------------------|----------------------------|-----------------------------|-----------------------|---|--|---------------|-----------------------------|-----------------------|
| | a + b = c | | a | b | c | d | | a | b |
| | | | | | | | | | |
| | Total Institutional Budget | Campus Name | Total area in square meters | Total number of seats | Total hours open per week (Sept. - April) | Total reference hours per week (Sept. - April) | Campus Name | Total area in square meters | Total number of seats |
| OC | 94,546,064.00 | Kelowna | 2,383.00 | 356.00 | 83.25 | 49.00 | Penticton | 416.00 | 85.00 |
| QUC | | Quest University Canada | 855.00 | 136.00 | 89.00 | 65.00 | | | |
| RR | 60,801,718.00 | Royal Roads | 1,900.00 | 160.00 | 81.50 | 62.00 | | | |
| SEL | 43,123,839.00 | Castlegar | 1,250.00 | 124.00 | 57.50 | 51.00 | Silver King | 155.00 | 15.00 |
| SFU | 634,825,000.00 | Bennett | 16,503.00 | 1,346.00 | 101.00 | 67.00 | Belzberg | 782.00 | 152.00 |
| TRU | 176,700,000.00 | Kamloops | 4,569.00 | 332.00 | 154.00 | 135.00 | Williams Lake | 172.00 | 70.00 |
| TWU | | Alloway Library | 3,344.50 | 398.00 | 83.00 | 70.00 | | | |
| UBC | 944,697,000.00 | Vancouver | 31,620.00 | 4,353.00 | 731.00 | 348.00 | Okanagan | 2,756.00 | 524.00 |
| UFV | 115,287,946.00 | Abbotsford | 3,149.00 | 337.00 | 80.00 | 67.00 | Chilliwack | 1,044.56 | 172.00 |
| UNBC | 77,545,000.00 | Geoffrey R. Weller Library | 4,248.70 | 616.00 | 92.00 | 38.00 | | | |
| UVIC | 317,747,000.00 | Main | 30,687.18 | 2,344.00 | 99.5 | 162 | | | |
| VCC | 81,990,000.00 | Broadway | 1,659.77 | 194.00 | 56.00 | 56.00 | Downtown | 910.19 | 168.00 |
| VIU | 133,140,621.00 | Nanaimo | 6,812.00 | 838.00 | 119.00 | 77.00 | Cowichan | 378.30 | 84.00 |

9. FACILITIES & HOURS

| | c | d | | a | b | c | d | | a | b |
|-------|---|--|--------------|-----------------------------|-----------------------|---|--|-------------|-----------------------------|-----------------------|
| | | | | | | | | | | |
| | Total hours open per week (Sept. - April) | Total reference hours per week (Sept. - April) | Campus Name | Total area in square meters | Total number of seats | Total hours open per week (Sept. - April) | Total reference hours per week (Sept. - April) | Campus Name | Total area in square meters | Total number of seats |
| BCIT | 40.00 | 7.00 | ATC | 257.90 | 86.00 | 57.50 | 7.00 | | | |
| CAM | 59.00 | 25.00 | | | | | | | | |
| CAPU | | | | | | | | | | |
| CNC | | | | | | | | | | |
| COTR | | | | | | | | | | |
| DOUG | 69.00 | 68.00 | | | | | | | | |
| ECUAD | | | | | | | | | | |
| JI | | | | | | | | | | |
| KPU | 73.50 | 42.00 | Richmond | 1,718.00 | 248.00 | 85.50 | 42.00 | Surrey | 5,547.00 | 958.00 |
| LC | | | | | | | | | | |
| NVIT | 40.00 | 40.00 | | | | | | | | |
| NI | 48.00 | 48.00 | Port Alberni | 274.00 | 60.00 | 45.50 | 45.50 | Mt Waddingt | 66.00 | 19.00 |
| NL | 52.00 | 35.00 | Fort Nelson | 103.00 | 12.00 | 30.00 | | | | |
| NW | 56.00 | 56.00 | Smithers | 133.40 | 20.00 | 28.00 | 28.00 | | | |

9. FACILITIES & HOURS

| | c | d | | a | b | c | d | | a | b |
|-------------|---|--|--------------|-----------------------------|-----------------------|---|--|-------------|-----------------------------|-----------------------|
| | | | | | | | | | | |
| | Total hours open per week (Sept. - April) | Total reference hours per week (Sept. - April) | Campus Name | Total area in square meters | Total number of seats | Total hours open per week (Sept. - April) | Total reference hours per week (Sept. - April) | Campus Name | Total area in square meters | Total number of seats |
| OC | 74.75 | 20.00 | Salmon Arm | 383.00 | 70.00 | 72.00 | 20.00 | Vernon | 648.00 | 97.00 |
| QUC | | | | | | | | | | |
| RR | | | | | | | | | | |
| SEL | 20.00 | | Tenth St | 40.00 | 6.00 | 20.00 | | | | |
| SFU | 76.00 | 66.00 | Surrey | 2,137.00 | 362.00 | 69.00 | 46.00 | | | |
| TRU | 58.00 | 30.00 | | | | | | | | |
| TWU | | | | | | | | | | |
| UBC | 110.00 | 66.00 | | | | | | | | |
| UFV | 64.50 | 58.50 | | | | | | | | |
| UNBC | | | | | | | | | | |
| UVIC | | | | | | | | | | |
| VCC | 59.00 | 59.00 | | | | | | | | |
| VIU | 60.00 | 60.00 | Powell River | 161.00 | 20.00 | 27.00 | 27.00 | | | |

| | | | | | | | 10. COMPUTING INFRASTRUCTURE |
|--------------|--|---|---|-------------------------------------|---|---|--|
| | c | d | e | f | g | h | a |
| | System will total automatically | | | | | | |
| | Total hours open per week (Sept. - April) | Total reference hours per week (Sept. - April) | Total square meters all campuses | Total seats all campuses | Total open hours per week all campuses (Sept.-April) | Total reference hours per week all campuses (Sept.- April) | Number of public workstations |
| BCIT | | | 2,211.90 | 990.00 | 265.50 | 75.50 | 116 |
| CAM | | | 3,389.00 | 589.00 | 132.00 | 85.00 | 138 |
| CAPU | | | 2,388.00 | 492.00 | 80.00 | 46.50 | 68 |
| CNC | | | 2,300.00 | 257.00 | 72.00 | 35.00 | 43 |
| COTR | | | 1,207.73 | 146.00 | 67.00 | 47.00 | 12 |
| DOUG | | | 4,952.00 | 784.00 | 138.00 | 130.00 | 159 |
| ECUAD | | | 992.00 | 101.00 | 70.00 | 62.00 | 20 |
| JI | | | 654.00 | 87.00 | 64.00 | 64.00 | 22 |
| KPU | 85.50 | 54.00 | 9,001.00 | 1,512.00 | 304.50 | 150.00 | 371 |
| LC | | | 4,743.00 | 784.00 | 76.00 | 67.00 | 122 |
| NVIT | | | 584.00 | 101.00 | 106.00 | 106.00 | 26 |
| NI | 17.50 | 2.50 | 1,211.00 | 264.00 | 171.00 | 156.00 | 57 |
| NL | | | 873.00 | 112.00 | 132.00 | 70.00 | 56 |
| NW | | | 1,425.40 | 159.00 | 153.00 | 126.00 | 30 |

| | | | | | | | 10. COMPUTING INFRASTRUCTURE |
|------|---|--|--|-----------------------------|---|---|----------------------------------|
| | c | d | e | f | g | h | a |
| | System will total automatically | | | | | | |
| | Total hours open per week (Sept. - April) | Total reference hours per week (Sept. - April) | Total square meters all campuses | Total seats all campuses | Total open hours per week all campuses (Sept.-April) | Total reference hours per week all campuses (Sept.- April) | Number of public workstations |
| OC | 74.50 | 23.00 | 3,830.00 | 608.00 | 304.50 | 112.00 | 150 |
| QUC | | | 855.00 | 136.00 | 89.00 | 65.00 | 18 |
| RR | | | 1,900.00 | 160.00 | 81.50 | 62.00 | 49 |
| SEL | | | 1,445.00 | 145.00 | 97.50 | 51.00 | 26 |
| SFU | | | 19,422.00 | 1,860.00 | 246.00 | 179.00 | 383 |
| TRU | | | 4,741.00 | 402.00 | 212.00 | 165.00 | 82 |
| TWU | | | 3,344.50 | 398.00 | 83.00 | 70.00 | 40 |
| UBC | | | 34,376.00 | 4,877.00 | 841.00 | 414.00 | 608 |
| UFV | | | 4,193.56 | 509.00 | 144.50 | 125.50 | 94 |
| UNBC | | | 4,248.70 | 616.00 | 92.00 | 38.00 | 97 |
| UVIC | | | 30,687.18 | 2,344.00 | 99.50 | 162.00 | 261 |
| VCC | | | 2,569.96 | 362.00 | 115.00 | 115.00 | 60 |
| VIU | | | 7,351.30 | 942.00 | 206.00 | 164.00 | 199 |

11. LIBRARY AUTOMATED SYSTEMS

| | Cataloguing | Primary source of bibliographic records | Secondary source of bibliographic records | OPAC | Periodicals Check In | Acquisitions |
|--------------|-----------------------------------|---|---|------------------------------|--------------------------------|--------------------------------|
| BCIT | Innovative Interfaces - Sierra | OCLC | Amicus | Innovative Interfaces | Innovative Interfaces - Sierra | Innovative Interfaces - Sierra |
| CAM | Symphony Sirsi/Dynix | Coutts | Amicus | Symphony Sirsi/Dynix | Symphony Sirsi/Dynix | Symphony Sirsi/Dynix |
| CAPU | Sierra (Innovative) | LC, NLC via AutoGraphics (AG) | Amicus | Sierra (Innovative) | Sierra (Innovative) | Sierra (Innovative) |
| CNC | Sirsi | LC | Amicus | Sirsi eLibrary | | |
| COTR | Evergreen | LC/Amicus/Outlook | OCLC/Original Cataloguing | Evergreen | MS Excel | Evergreen |
| DOUG | Innovative | OCLC, AG Canada, Amicus, LC | other Z39.50 sites | Innovative | Innovative | Innovative |
| ECUAD | Evergreen | Book Where | Book Vendors | Evergreen | Manual | Evergreen |
| JI | SIRSIDynix | OCLC | AMICUS | SIRSIDynix | SIRSIDynix | SIRSIDynix |
| KPU | SirsiDynix Symphony | LC, LAC, Z39.50 | OCLC | SirsiDynix Symphony | SirsiDynix Symphony | SirsiDynix Symphony |
| LC | Innovative Interfaces Sierra | Z39.50 (Sierra, Bookwhere) | Vendor provided records | Innovative Interfaces Sierra | Innovative Interfaces Sierra | Innovative Interfaces Sierra |
| NVIT | Copy Cataloging - Sitka Evergreen | | | Sitka Evergreen | | |
| NI | Sirsi | LC | other Z39.50 targets | Sirsi | n/a | Sirsi |
| NL | Sirsi Dynix | Outlook | Vendors | Sirsi Dynix Symphony | Sirsi Dynix Symphony | |
| NW | Sirsi/Symphony | Outlook | Amicus | Sirsi eLibrary | Sirsi | Sirsi |

11. LIBRARY AUTOMATED SYSTEMS

| | Cataloguing | Primary source of bibliographic records | Secondary source of bibliographic records | OPAC | Periodicals Check In | Acquisitions |
|-------------|---------------------------|---|---|---------------------|----------------------|---------------------|
| OC | Voyager (Ex Libris) / YBP | YBP / Coutts | OCLC | Voyager (Ex Libris) | Voyager (Ex Libris) | Voyager (Ex Libris) |
| QUC | Voyager (Endeavor) | Library of Congress | Library & Archives Canada | Voyager (Endeavor) | Voyager (Endeavor) | Voyager (Endeavor) |
| RR | Voyager (Endeavor) | Library of Congress | Amicus | Voyager (Endeavor) | Voyager (Endeavor) | Voyager (Endeavor) |
| SEL | Sirsi Symphony | LC, Outlook, NLC | Z39.50 | Sirsi | Sirsi | Sirsi |
| SFU | III Millennium | OCLC | Z39.50 | III Millennium | III Millennium | III Millennium |
| TRU | Sirsi/Unicorn | Yankee Book Peddler | Amicus | Sirsi/Unicorn | Sirsi/Unicorn | Sirsi/Unicorn |
| TWU | SirsiDynix Symphony | OCLC | Amicus | Symphony | | Symphony |
| UBC | Voyager/ExLibris | LC | OCLC | Voyager | Voyager | Voyager |
| UFV | SirsiDynix Symphony | OCLC, LC, Amicus | BC Legislative Library, Outlook | SirsiDynix Symphony | SirsiDynix Symphony | SirsiDynix Symphony |
| UNBC | Sierra | OCLC | NLC | Innovative | Sierra | Sierra |
| UVIC | Voyager/ExLibris | OCLC; Vendor records; Serials Solutions | | Voyager/ExLibris | Voyager/ExLibris | Voyager/ExLibris |
| VCC | VTLS Virtua | BookWhere | Coutts | VTLS | VTLS | VTLS |
| VIU | Sirsi | OCLC, vendors | Bookwhere | Sirsi | Sirsi | Sirsi |

| | Interlibrary Loans | Discovery Service | ERM | Link Resolver |
|--------------|---|--------------------------------|-----------------------------------|-----------------------------------|
| BCIT | Innovative Interfaces - Sierra & Ariel (Borrowing module) | Innovative Interfaces - Encore | | Innovative Interfaces - WebBridge |
| CAM | Outlook | Ebsco EDS | CUFTS | CUFTS/GODOT |
| CAPU | Outlook Online | EDS (EBSCO) | CUFTS | CUFTS/GODOT |
| CNC | Outlook Online, Email | | CUFTS | CUFTS/GODOT |
| COTR | Outlook | | | EBSCO Linksource |
| DOUG | Ariel, Outlook Online | Encore | | |
| ECUAD | Manual | | CUFTS | CUFTS/GODOT |
| JI | Outlook, AMICUS, DocLine | | Serials Solutions | Serials Solutions, GODOT/Cufts |
| KPU | Relais | Summon | Researcher (CUFTS Tool) | GODOT |
| LC | Outlook, Amicus | Interfaces Encore Duet | Innovative Interfaces Sierra/CASE | CUFTS/GODOT |
| NVIT | Outlook online | | | |
| NI | Outlook | | | GODOT |
| NL | Outlook | | CUFTS | GODOT |
| NW | Manual/Outlook | | CUFTS | GODOT |

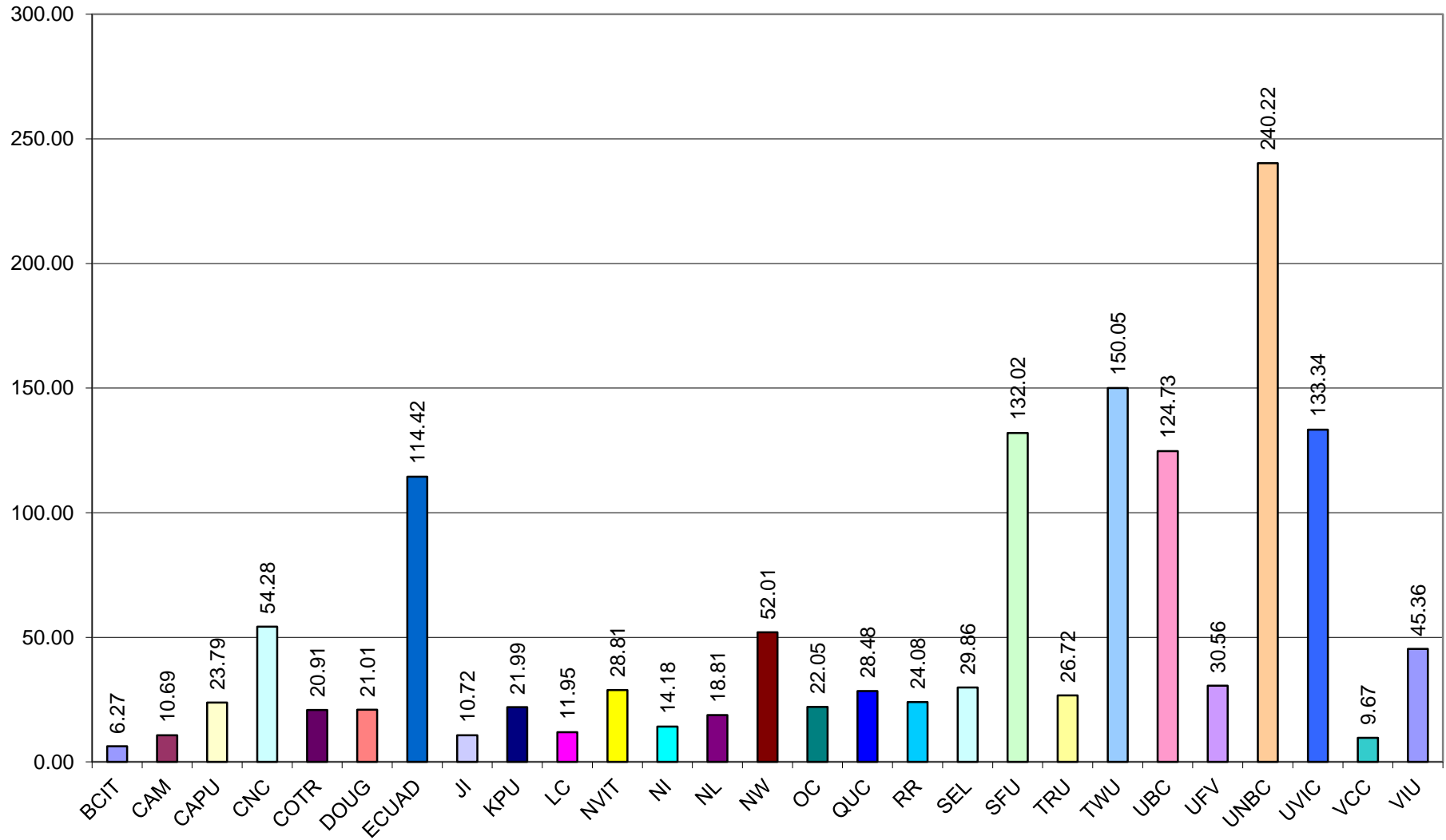
| | Interlibrary Loans | Discovery Service | ERM | Link Resolver |
|-------------|-------------------------------------|---------------------------|---|-----------------------------|
| OC | GODOT / Outlook / In-house database | EBSCO Discovery Service | CUFTS | GODOT |
| QUC | Manual | | | |
| RR | VDX | Summon | | Serials Solutions 360 |
| SEL | Outlook | | CUFTS | CUFTS/GODOT |
| SFU | Relias | Summon | CUFTS ERM | CUFTS/GODOT |
| TRU | Relais | Ebssco Discovery Service | | LinkSource |
| TWU | Relais | | | CUFTS/GODOT |
| UBC | Relais | Summon (SerialsSolutions) | SerialsSolutions | 360 Link (SerialsSolutions) |
| UFV | Relais, Outlook | Ebsco Discovery Service | CUFTS | CUFTS/GODOT |
| UNBC | Relais | Sierra | Sierra | Serials Solutions |
| UVIC | OCLC; Relais | Summon | Serials Solutions, 360 Resource Manager | Serials Solutions, 360 Link |
| VCC | Ariel/Outlook | | | CUFTS/GODOT |
| VIU | kk | Summon | Serial Solutions (360 Core & 360 RM) | Serial Solutions 360 Link |

| | a) Volumes/FTE Student: 5.1(f)/3(f) | b) Physical Subscriptions/FTE Student: 5.1(g)/3(f) | c) Collection Expenditures/FTE Student: 7(i)/3(f) | d) Library Expenditures/FTE Student: 7(n)/3(f) | e) Collection Expenditures as % of Library Expenditures: 7(i)/7(n) | f) Physical Periodicals as % of Library Expenditures: 7(d)/7(i) | g) Electronic Services as % of Library Expenditures: 7(f)/7(i) | h) Library Expenditures as % of Institutional Budget: 7(n)/8 | i) FTE Students/FTE Library Personnel: 3(f)/4(f) | j) Direct Circulation/FTE Student: 6(d)/3(f) | k) Direct Circulation/Total Volumes: 6(d)/5.1(f) | l) Total Library Expenditure/Circulation: 7(n)/6(d) | m) Reference Transactions/FTE Student: 6a(iii)/3(f) | n) Number of Students Instructed/FTE Students: 6(b)/3(f) | o) Total Library Area/FTE Student: 9(e)/3(f) | p) Number of Seats/FTE Student: 9(f)/3(f) | q) Hours Open/FTE Personnel: 9(g)/4(f) | r) Reference Hours/Total Open Hours: 9(n)/9(g) | s) Electronic Titles per FTE Student: 5.2(d)/3(f) | t) Electronic Expenditures/per FTE Student: 7(j)/3(f) |
|---------|-------------------------------------|--|---|--|--|---|--|--|--|--|--|---|---|--|--|---|--|--|---|---|
| Library | Ratios | | | | | | | | | | | | | | | | | | | |
| BCIT | 6.27 | 0.02 | 43.31 | 173.73 | 24.93% | 3.88% | 13.28% | 1.22% | 619.30 | 2.50 | 0.40 | 69.63 | 0.53 | 0.22 | 0.11 | 0.05 | 8.40 | 0.28 | 3.67 | 23.07 |
| CAM | 10.69 | 0.02 | 40.02 | 219.34 | 18.25% | 2.33% | 8.82% | 1.72% | 431.17 | 4.05 | 0.38 | 54.14 | 2.16 | 0.68 | 0.38 | 0.07 | 6.40 | 0.64 | 3.40 | 19.34 |
| CAPU | 23.79 | 0.04 | 63.58 | 303.62 | 20.94% | 1.40% | 14.05% | 1.81% | 264.15 | 4.41 | 0.19 | 68.92 | 1.05 | 0.76 | 0.46 | 0.09 | 4.06 | 0.58 | 66.12 | 42.66 |
| CNC | 54.28 | 0.09 | 64.72 | 320.85 | 20.17% | 6.72% | 5.09% | 3.22% | 273.93 | 4.95 | 0.09 | 64.81 | 3.86 | 0.44 | 0.69 | 0.08 | 5.90 | 0.49 | 15.02 | 16.32 |
| COTR | 20.91 | 0.02 | 32.72 | 209.83 | 15.59% | 0.54% | 11.35% | 2.04% | 341.35 | 3.18 | 0.15 | 66.03 | 2.01 | 0.29 | 0.53 | 0.06 | 10.08 | 0.70 | 85.45 | 23.82 |
| DOUG | 21.01 | 0.09 | 54.75 | 329.10 | 16.64% | 2.97% | 8.12% | 2.41% | 247.20 | 20.42 | 0.97 | 16.12 | 3.74 | 0.87 | 0.54 | 0.09 | 3.75 | 0.94 | 9.84 | 26.72 |
| ECUAD | 114.42 | 0.14 | 105.17 | 554.99 | 18.95% | 2.91% | 9.43% | 3.18% | 134.65 | 18.17 | 0.16 | 30.54 | 4.31 | 1.19 | 0.66 | 0.07 | 6.28 | 0.89 | 40.82 | 52.33 |
| JI | 10.72 | 0.05 | 72.02 | 288.87 | 24.93% | 5.52% | 11.09% | 1.74% | 360.69 | 1.57 | 0.15 | 183.87 | 1.54 | 0.38 | 0.25 | 0.03 | 8.89 | 1.00 | 59.01 | 32.04 |
| KPU | 21.99 | 0.05 | 103.53 | 483.06 | 21.43% | 2.17% | 12.69% | 3.60% | 191.17 | 5.18 | 0.24 | 93.21 | 2.00 | 0.78 | 0.86 | 0.14 | 5.55 | 0.49 | 22.36 | 61.29 |
| LC | 11.95 | 0.03 | 44.13 | 329.54 | 13.39% | 1.58% | 8.46% | 2.35% | 254.65 | 6.15 | 0.52 | 53.57 | 2.99 | 1.24 | 0.66 | 0.11 | 2.68 | 0.88 | 15.86 | 27.89 |
| NVIT | 28.81 | 0.01 | 0.00 | 270.76 | 0.00% | 0.00% | 0.00% | 1.28% | 184.67 | 2.26 | 0.08 | 120.00 | 5.10 | 0.45 | 1.05 | 0.18 | 35.33 | 1.00 | 268.22 | 0.00 |
| NI | 14.18 | 0.09 | 39.95 | 256.48 | 15.57% | 2.24% | 9.78% | 1.66% | 239.71 | 3.87 | 0.27 | 66.24 | 0.70 | 0.45 | 0.48 | 0.10 | 16.29 | 0.91 | 84.34 | 25.09 |
| NL | 18.81 | 0.07 | 54.34 | 316.38 | 17.17% | 0.79% | 12.12% | 1.29% | 237.48 | 2.99 | 0.16 | 105.69 | 1.53 | 0.28 | 0.63 | 0.08 | 22.80 | 0.53 | 148.19 | 38.34 |
| NW | 52.01 | 0.09 | 72.06 | 483.45 | 14.91% | 1.78% | 3.56% | 2.18% | 221.74 | 6.26 | 0.12 | 77.21 | 1.79 | 0.48 | 0.93 | 0.10 | 22.17 | 0.82 | 25.86 | 17.22 |
| OC | 22.05 | 0.04 | 69.70 | 344.26 | 20.25% | 1.34% | 13.16% | 2.56% | 250.75 | 6.55 | 0.30 | 52.55 | 1.87 | 0.81 | 0.55 | 0.09 | 10.88 | 0.37 | 18.26 | 45.29 |
| QUC | 28.48 | 0.10 | 205.69 | 650.17 | 31.64% | 2.30% | 20.35% | #REF! | 92.86 | 0.96 | 0.03 | 674.02 | 2.72 | 0.96 | 1.32 | 0.21 | 12.71 | 0.73 | 277.57 | 132.31 |
| RR | 24.08 | 0.03 | 204.61 | 610.10 | 33.54% | 0.61% | 31.49% | 2.45% | 154.24 | 6.34 | 0.26 | 96.23 | 2.34 | 0.50 | 0.78 | 0.07 | 5.15 | 0.76 | 132.90 | 192.15 |
| SEL | 29.86 | 0.14 | 54.83 | 330.76 | 16.58% | 6.06% | 7.69% | 1.68% | 243.89 | 5.66 | 0.19 | 58.41 | 0.70 | 0.28 | 0.66 | 0.07 | 10.83 | 0.52 | 21.18 | 25.44 |
| SFU | 132.02 | 0.13 | 371.49 | 965.58 | 38.47% | 1.38% | 31.38% | 3.45% | 146.83 | 25.35 | 0.19 | 38.09 | 4.40 | 1.07 | 0.86 | 0.08 | 1.59 | 0.73 | 178.41 | 303.04 |
| TRU | 26.72 | 0.03 | 75.64 | 267.49 | 28.28% | 4.03% | 20.60% | 1.50% | 413.86 | 5.04 | 0.19 | 53.08 | 0.98 | 0.39 | 0.48 | 0.04 | 8.85 | 0.78 | 16.55 | 55.10 |
| TWU | 150.05 | 0.24 | 0.00 | 0.00 | #DIV/0! | #DIV/0! | #DIV/0! | #DIV/0! | 168.88 | 32.78 | 0.22 | 0.00 | 1.65 | 1.30 | 1.58 | 0.19 | 6.64 | 0.84 | 93.89 | 0.00 |
| UBC | 124.73 | 0.15 | 391.13 | 998.51 | 39.17% | 3.78% | 27.45% | 4.79% | 145.41 | 32.41 | 0.26 | 30.80 | 2.53 | 0.79 | 0.76 | 0.11 | 2.70 | 0.49 | 47.94 | 274.13 |
| UFV | 30.56 | 0.05 | 152.27 | 422.27 | 36.06% | 2.47% | 23.22% | 2.64% | 288.60 | 8.53 | 0.28 | 49.48 | 2.55 | 0.84 | 0.58 | 0.07 | 5.78 | 0.87 | 33.95 | 98.05 |
| UNBC | 240.22 | 0.03 | 608.71 | 1161.32 | 52.42% | 0.71% | 43.76% | 4.24% | 122.11 | 8.10 | 0.03 | 143.38 | 0.71 | 1.30 | 1.50 | 0.22 | 3.97 | 0.41 | 71.72 | 508.20 |
| UVIC | 133.34 | 0.58 | 430.21 | 909.30 | 47.31% | 6.53% | 34.04% | 4.76% | 122.57 | 13.14 | 0.10 | 69.22 | 2.68 | 0.78 | 1.84 | 0.14 | 0.73 | 1.63 | 54.92 | 309.51 |
| VCC | 9.67 | 0.02 | 40.81 | 362.50 | 11.26% | 1.28% | 5.17% | 3.35% | 253.19 | 8.95 | 0.93 | 40.48 | 3.87 | 0.76 | 0.34 | 0.05 | 3.84 | 1.00 | 65.73 | 18.75 |
| VIU | 45.36 | 0.01 | 145.94 | 379.04 | 38.50% | 0.49% | 29.84% | 1.98% | 338.79 | 5.75 | 0.13 | 65.94 | 1.43 | 0.57 | 1.05 | 0.14 | 10.01 | 0.80 | 103.84 | 113.10 |

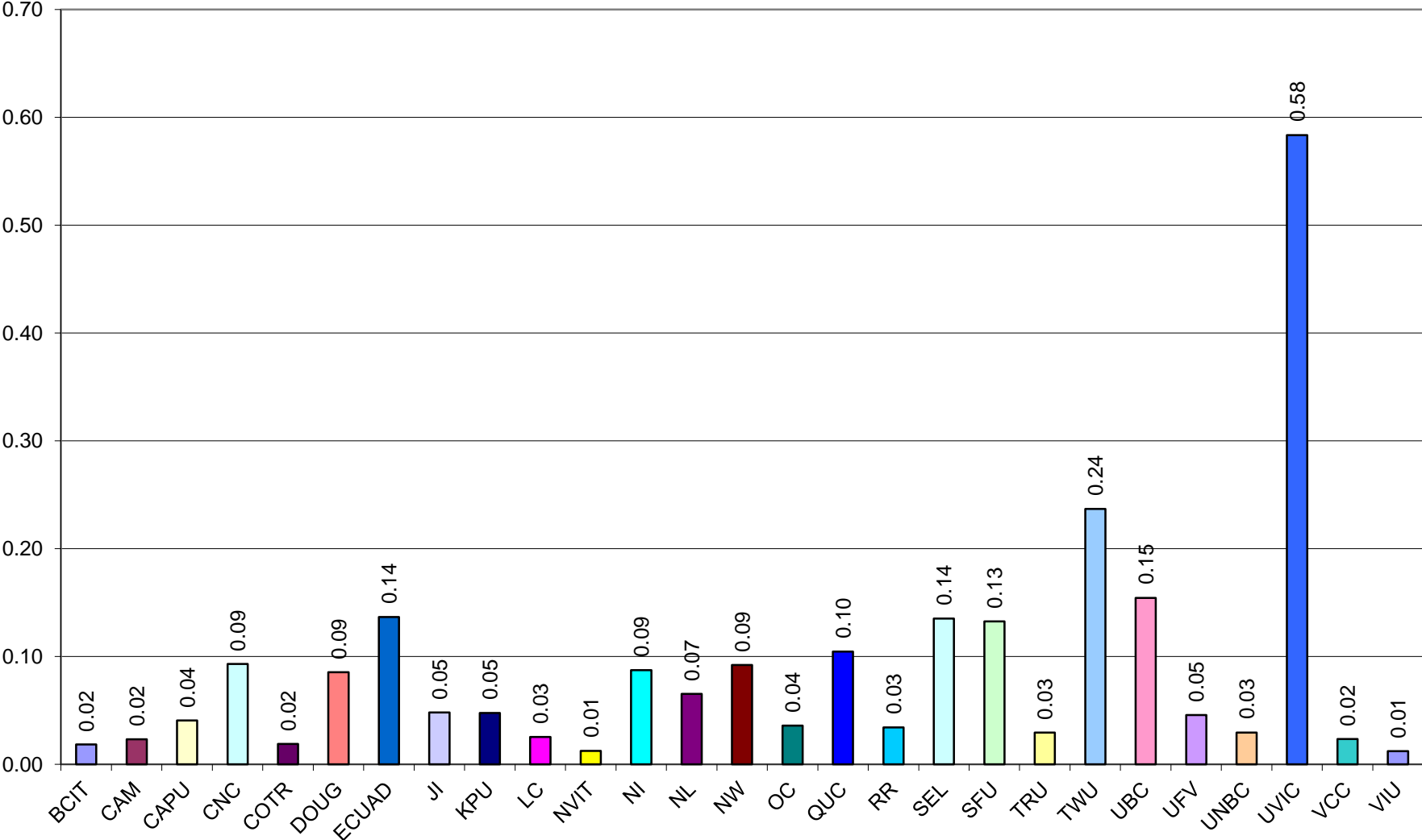
**CPSLD LIBRARY SURVEY 2013-2014
EXPLANATORY NOTES**

| Library | Notes |
|----------------|--|
| CAM | 4C Other professionals include Copyright Advisor, Learning Skills Facilitator and Writing Centre Instructional Assistant 7G & 7H Streaming media and electronic serials are included in the electronic resources expenditure |
| DC | 7I There is no mechanism to track 'other' electronic collection count which is inconsistent with the inclusion of 'other' in the spending. Spending is recorded as actuals - exclusive of prepaids. 9A Our square footage count had an accumulating error in past reports - this area count is accurate to building plans |
| ECUAD | 5.1D 124,750 glass-mounted slides 7C Our Monographs and Audio-Visual materials are ordered through the same budget: \$55,039 for Monographs includes the amount for Audio-Visual |
| LC | 7 Collections - amounts calculated based on supplementary reports, Banner accounts no longer align directly 7K Special funding = \$0 as included collection expenditures by format totaled in 7(e) and 7(j) 7M Not reported in the past, includes other library expenses Effective 2013/14, InterLibrary Loan line moved into collections budget but reported here 8 Institutional expenses - Taken from Langara website - financial services annual reports 9B Seats. Weeding physical collection continues. Removed stacks for additional seating in media/reserve area and 2nd floor 11. InterLibrary Loans uses TitanFile for delivering articles to students |
| NLC | Error in (H) for 2012 - 2013 electronic serial titles in expenses. # of e-books and not financial total was inaccurately displayed in this field 5.1A Monographs include 4 maps 6F Gate Count is for FSJ, FN & DC. FN count is estimated. 7A Noticeable salary change from 2012 - 2013 fiscal year, due to permanent loss of 1 librarian position plus staffing changes 6FGate counts available for Comox Valley, Campbell River and Port Alberni only. Gate counts were sporadic throughout the year due to malfunction at all three campuses. |
| NIC | 9E Campus areas have been adjusted from previous years. |
| NVIT | 6F Reduction in Gate count due to gate counter malfunction Reduction overall in stats because of corrupted data between Sept-Dec. 2013 |
| NWCC | 6F - Gate Count is for Terrace and Prince Rupert Campuses |
| OKC | 4B - FTE Library Staff: The lower number reported for 2013-14 does not reflect a staffing reduction, but is a correction of a reporting error that has persisted since approximately 2007. 6F - Gate Count: Gate in Penticton was broken in Feb 2014. An average of Feb 2012 and Feb 2013 was used to estimate the 2014 count. |
| SFU | 6A (ii)the directional question increase is a direct result of four additional service points recording interactions 6A(i) 2013.2014 includes reference questions answered at the Loans desk (formerly counted under directional) 6F No gate count due to non-operable gates during renovations 7K Recorded as \$0 These amounts are already recorded in the physical collections and electronic collections expenditures totals. 7M Other: includes one-time capital funding for renovations |
| UBC | All figures include UBC Vancouver and UBC Okanagan campuses 5.1G Total current print subscriptions based on 2011/12 count 5.2 Includes open access and free titles when accessible through UBC Library discovery layers (ILS, Summon) 7B Includes \$1,721,768 for collections gifts in kind 9C Vancouver campus: weekly open hours is the sum of 11 distinct service points 9D Vanocuver campus: weekly ref hours is the sum of 10 distinct service points |
| UFV | 2 Mission Campus Library closed at the end of April 2013, so has not been included in 2013-2014 report. 3 FTE faculty numbers calculated using different methodology than previous years. |
| VCC | 7C AV expenses are not tracked separately. |
| VIU | 9C & 9DThe Nanaimo library is divided into two sections: the Commons and the stacks/service area. Total library hours are based on the Commons, which has longer hours than the stacks/service area. Reference hours are based on the stacks/service area. |

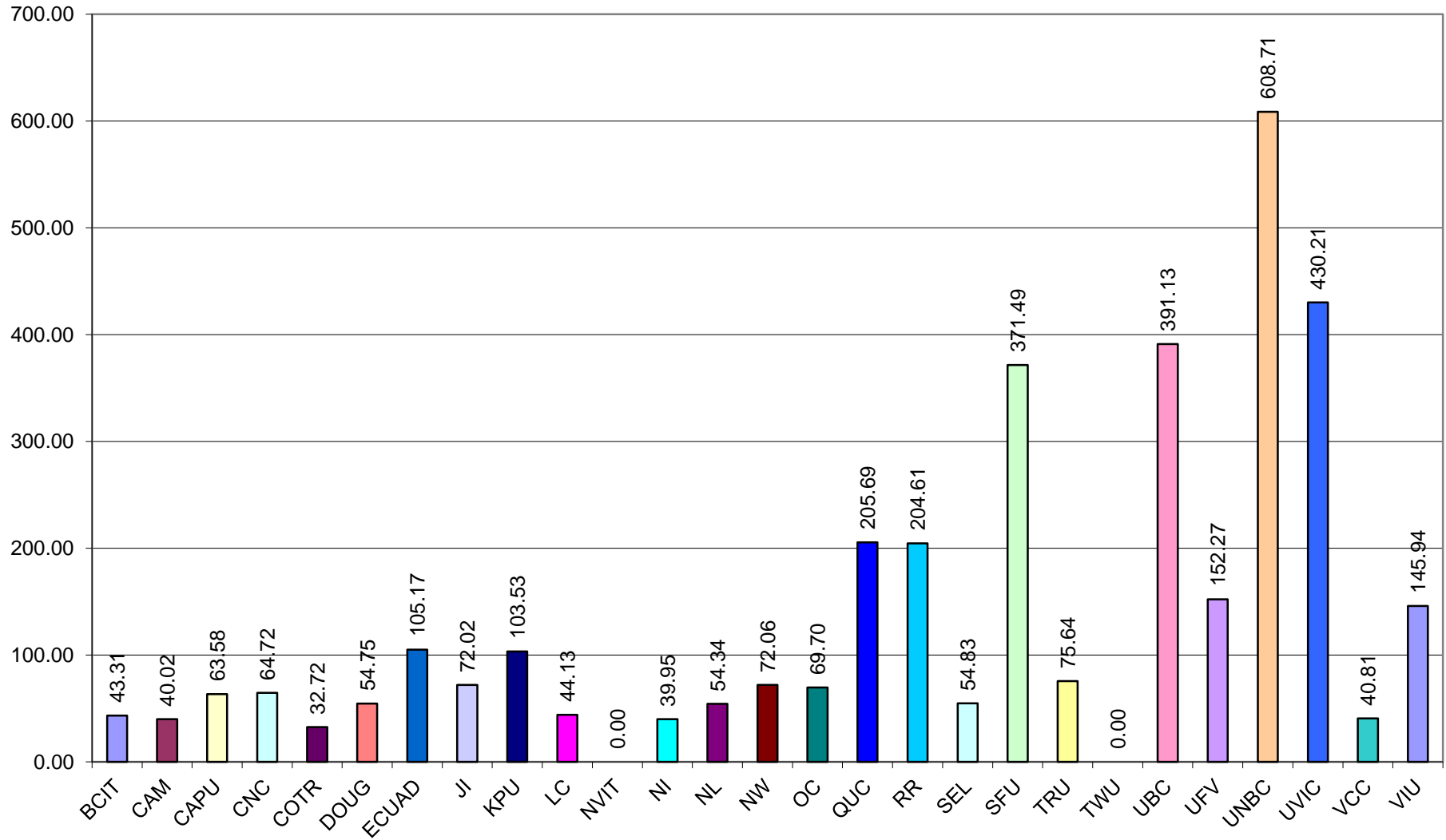
a) Volumes per FTE Student: 5.1(f)/3(f)



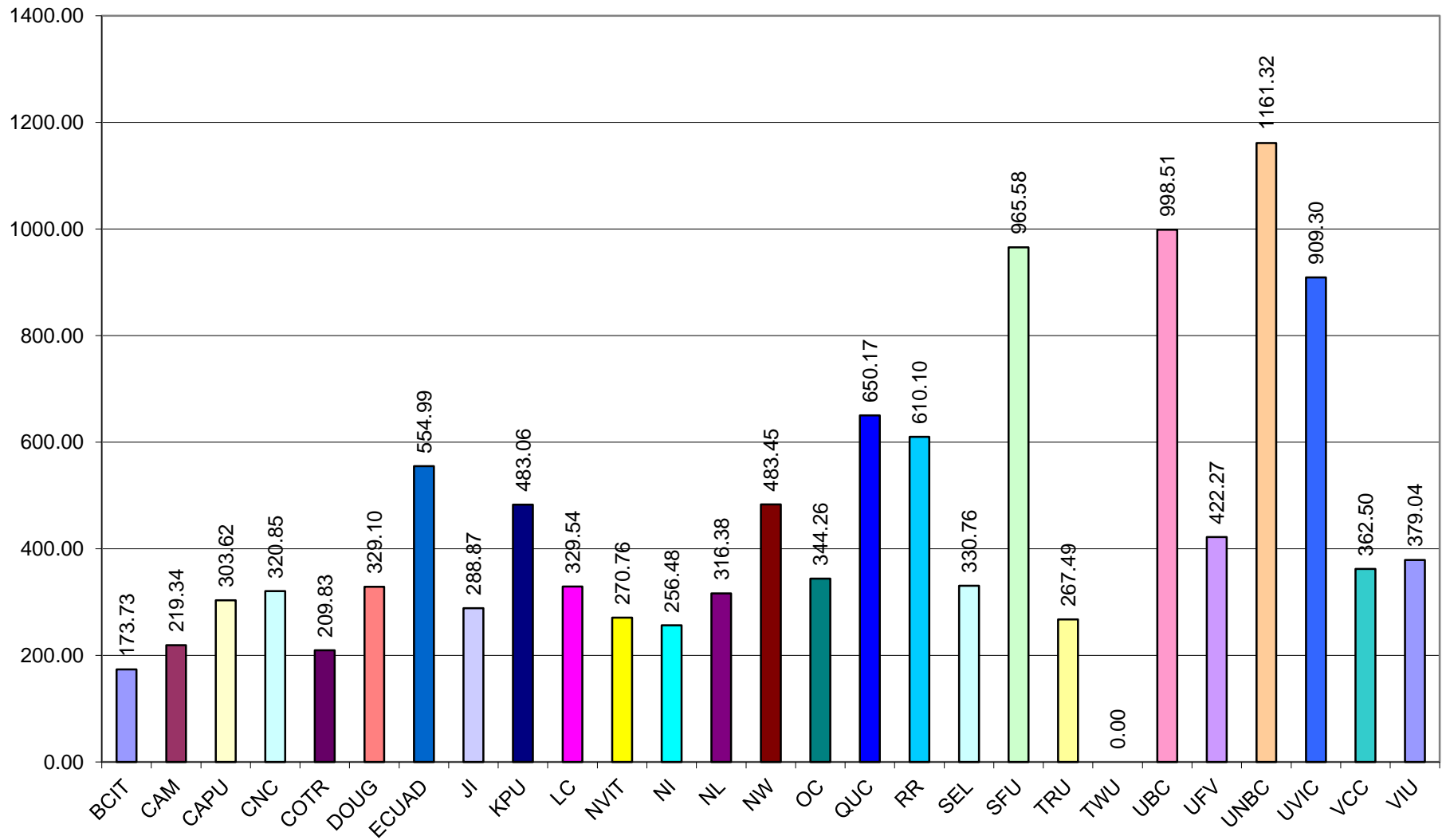
b) Physical Subscriptions per FTE Student: 5.1(g)/3(f)



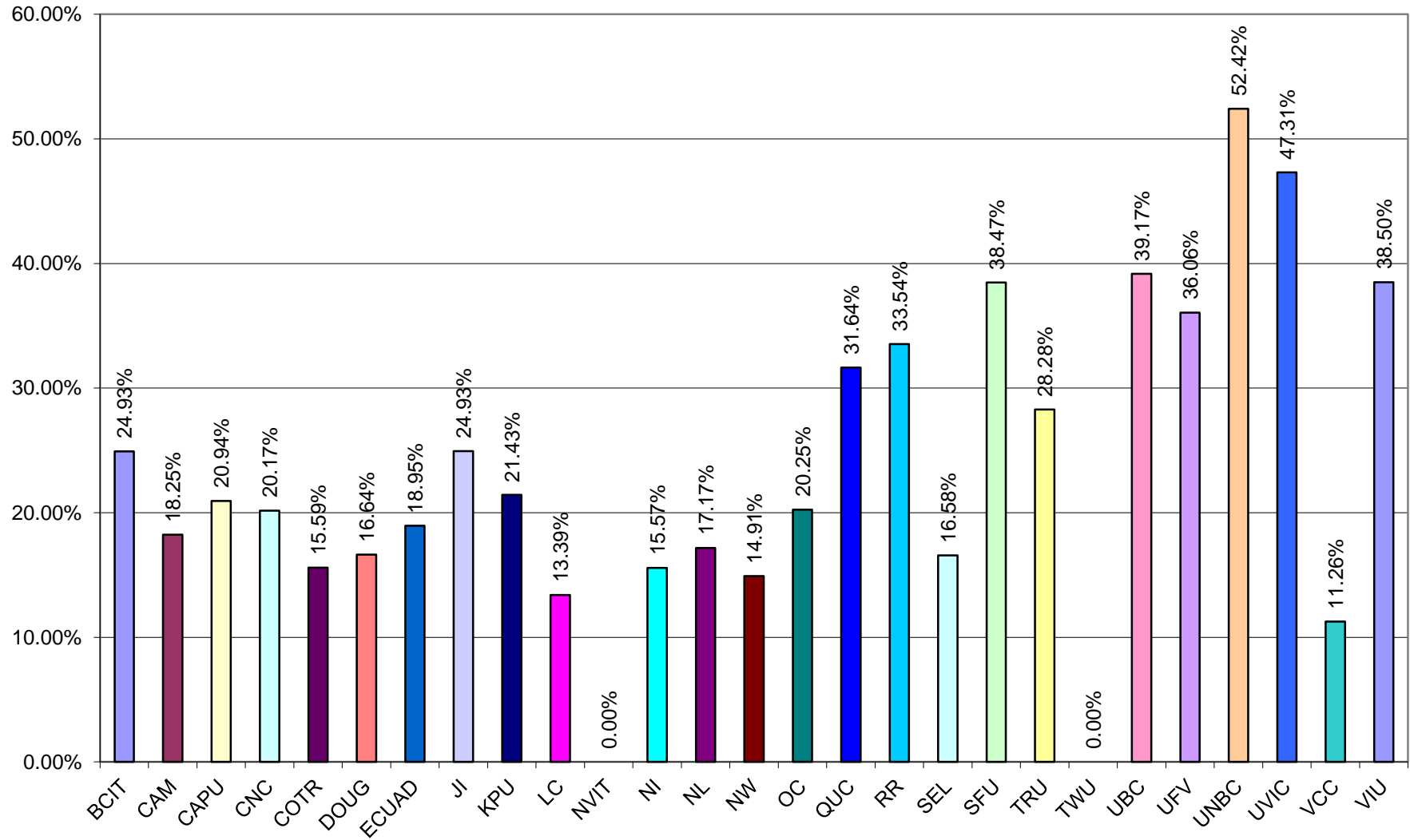
c) Collection Expenditures per FTE Student: 7(l)/3(f)



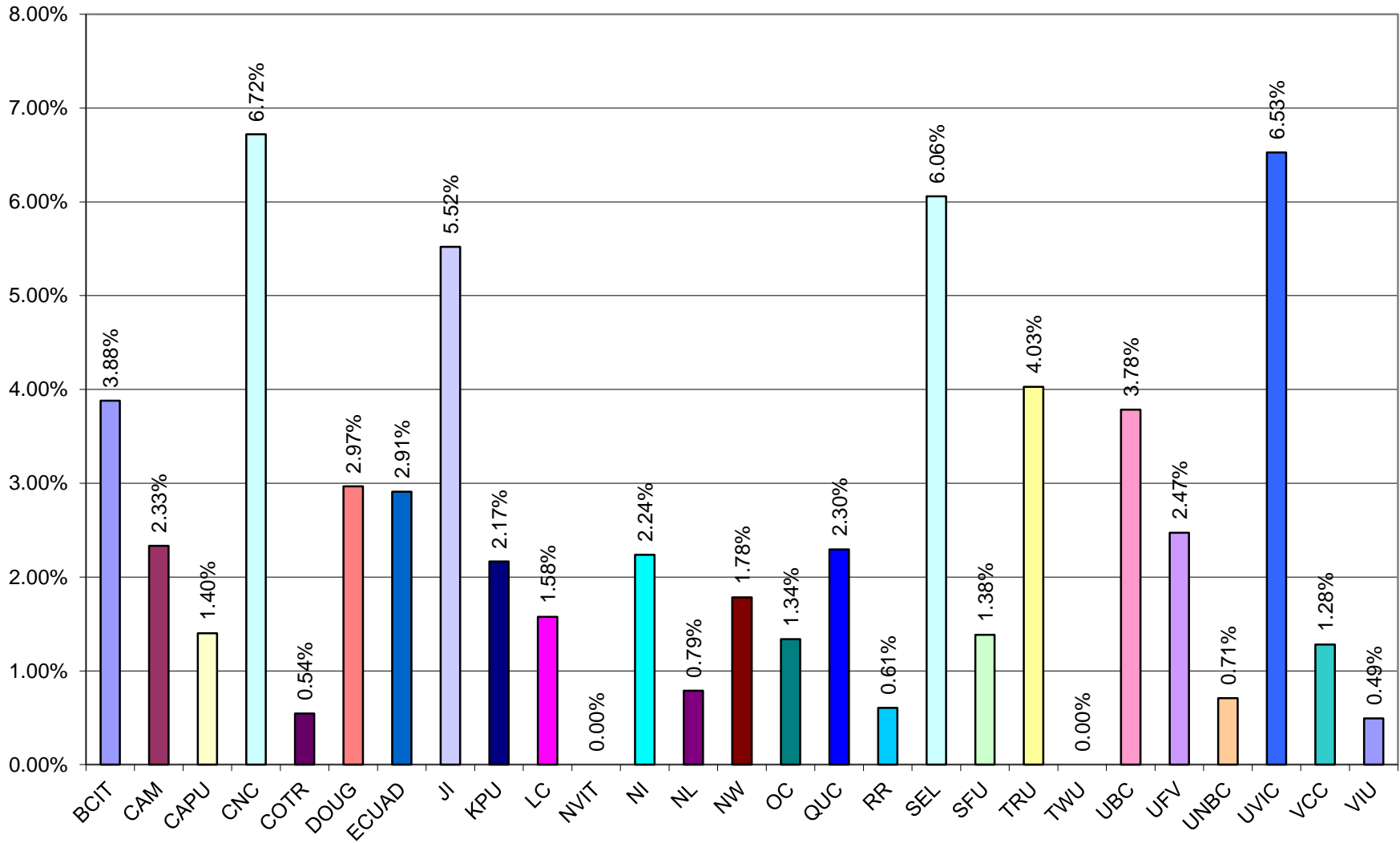
d) Library Expenditures per FTE Student: 7(n)/3(f)



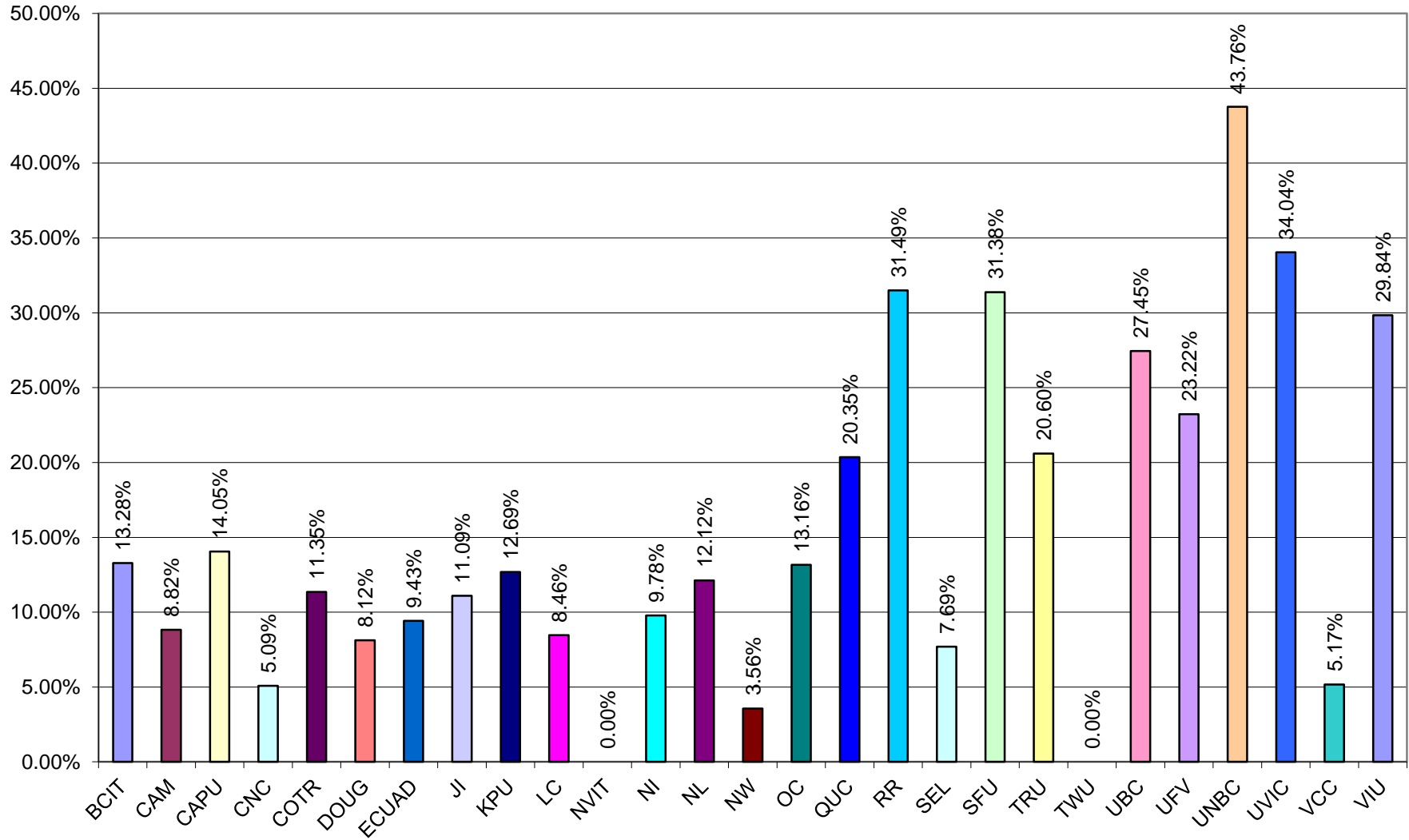
e) Collection Expenditures as % of Library Expenditures: 7(l)/7(n)



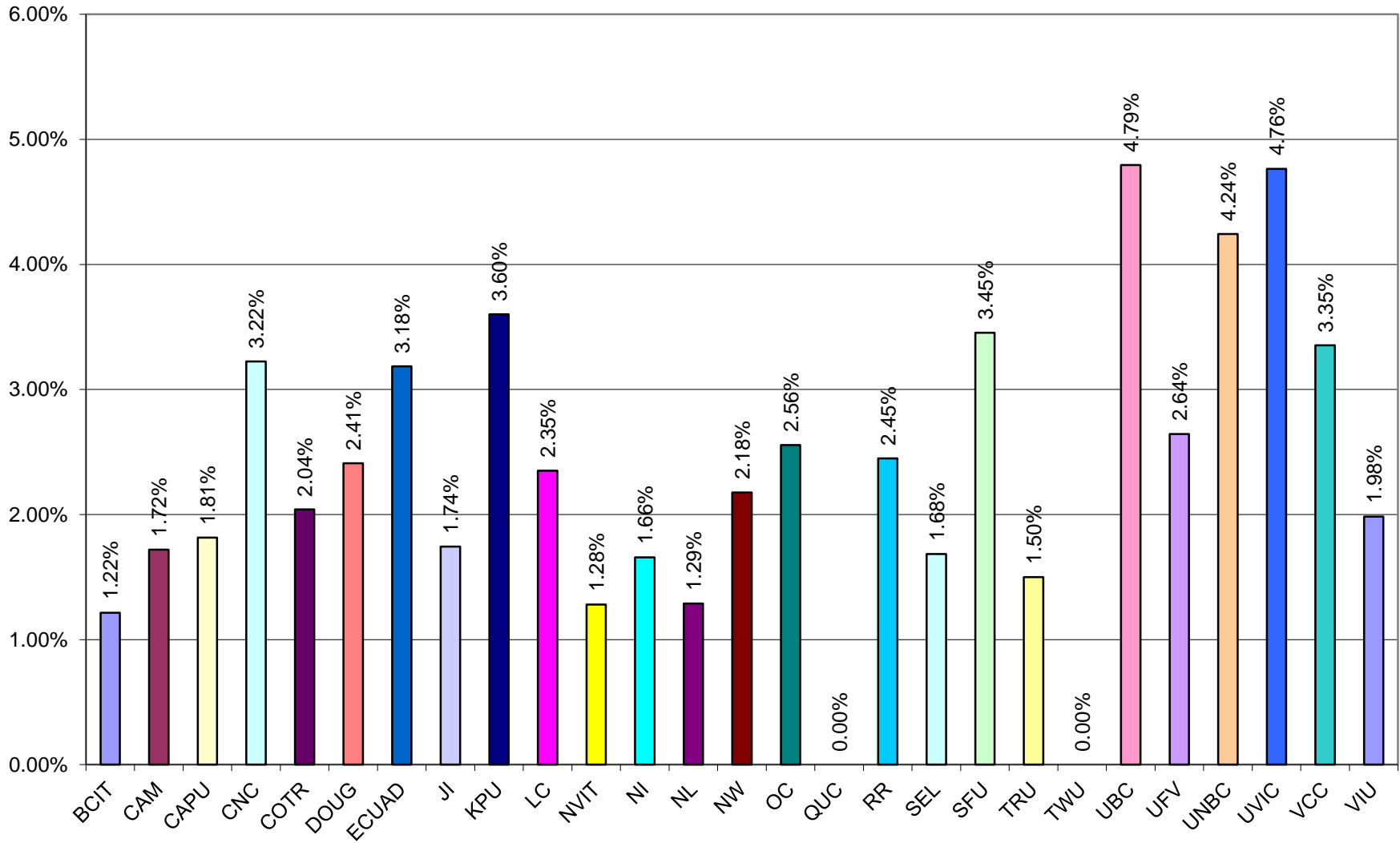
f) Physical Periodicals as % of Library Expenditures: 7(d)/7(n)



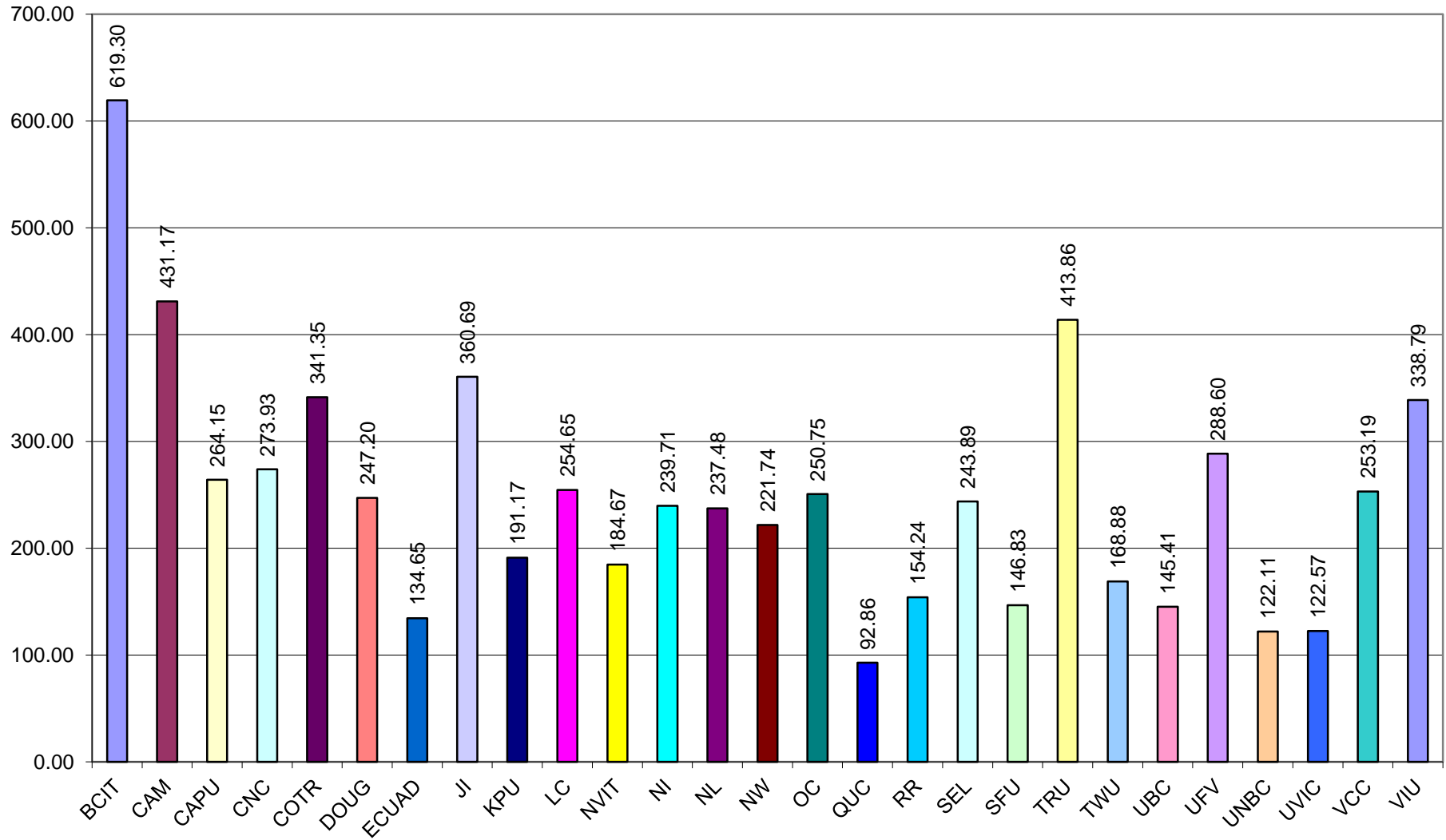
g) Electronic Services as % of Library Expenditures: 7(j)/7(n)



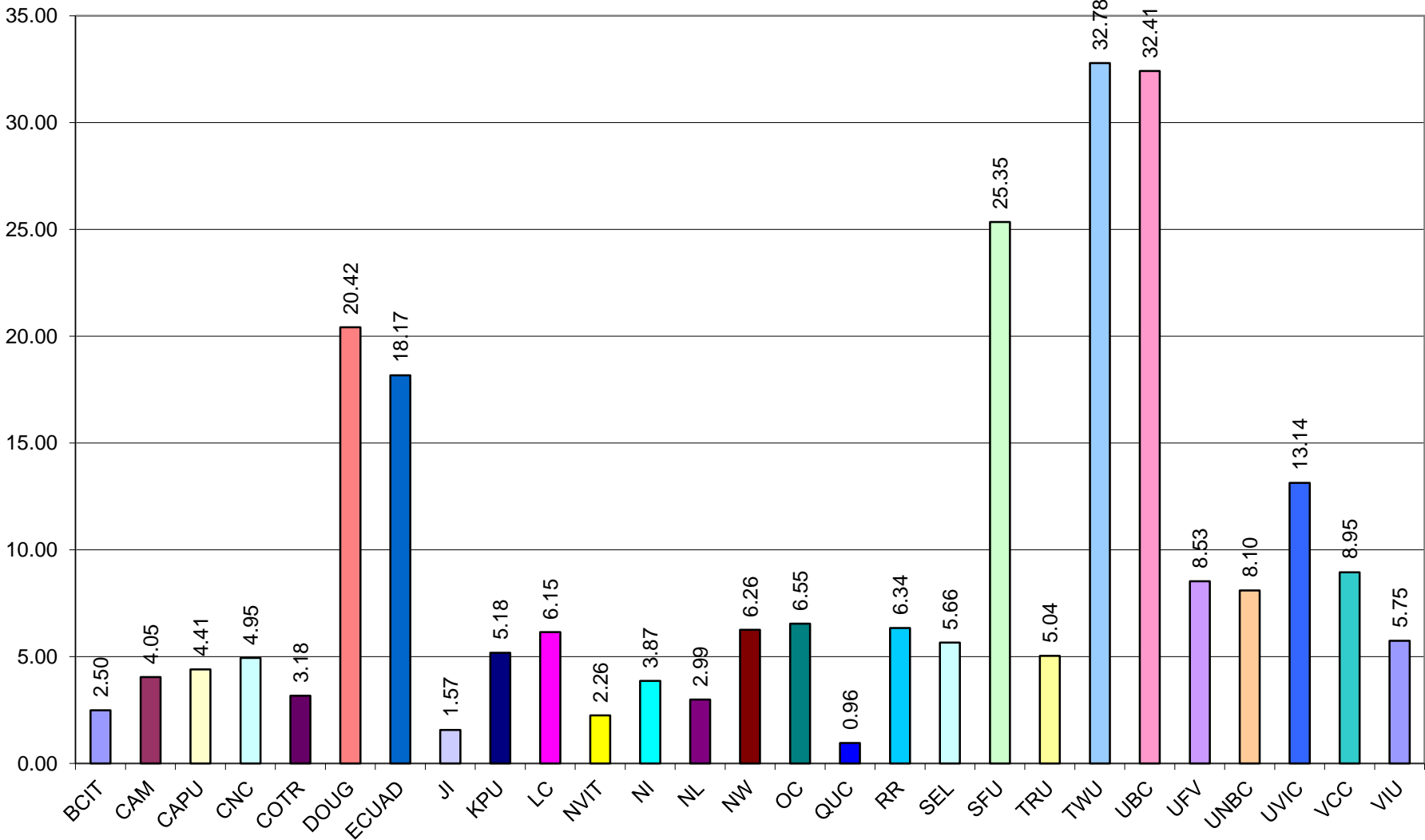
h) Library Expenditures as % of Institutional Budget: 7(n)/8(c)



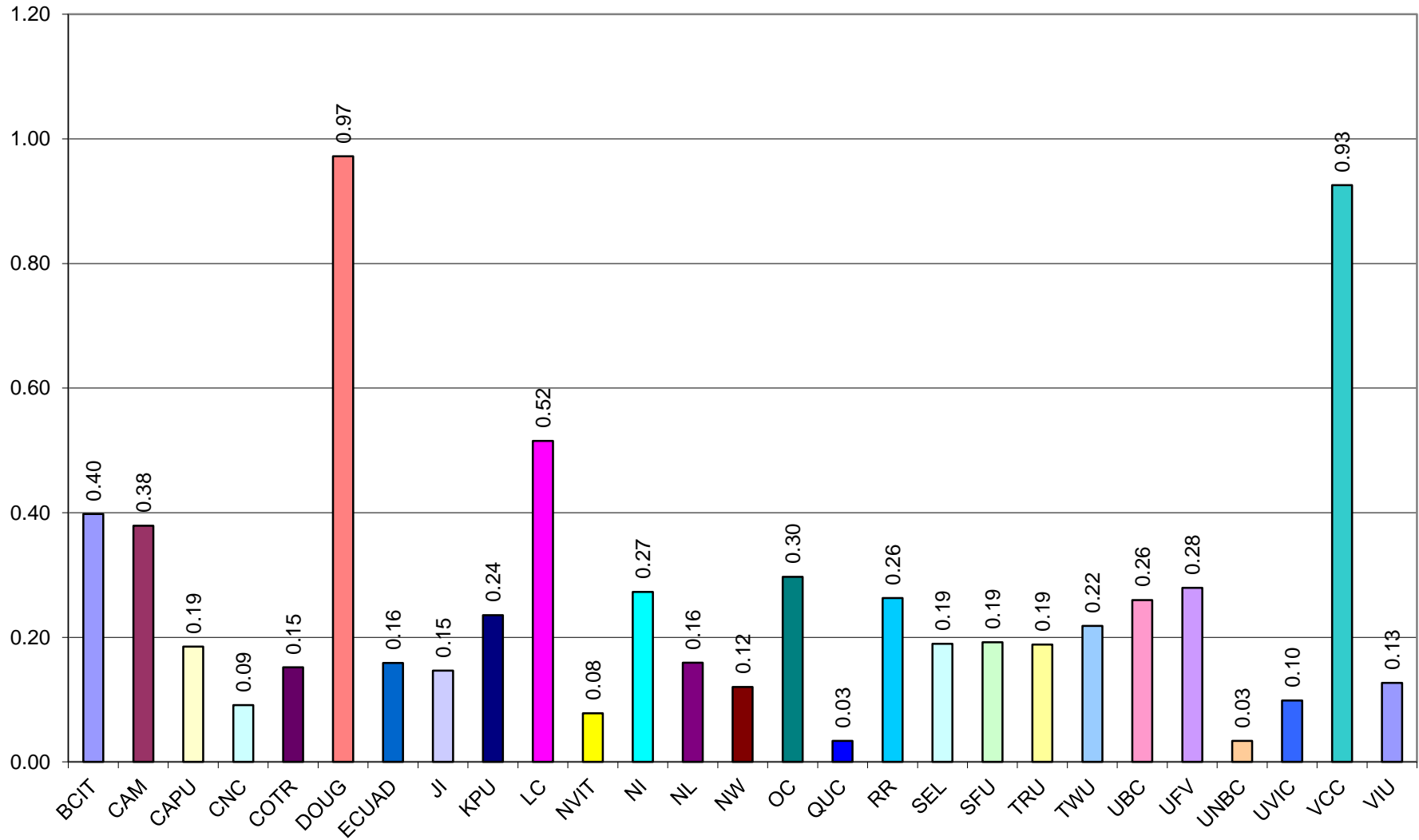
i) FTE Students per FTE Library Personnel: 3(f)/4(f)



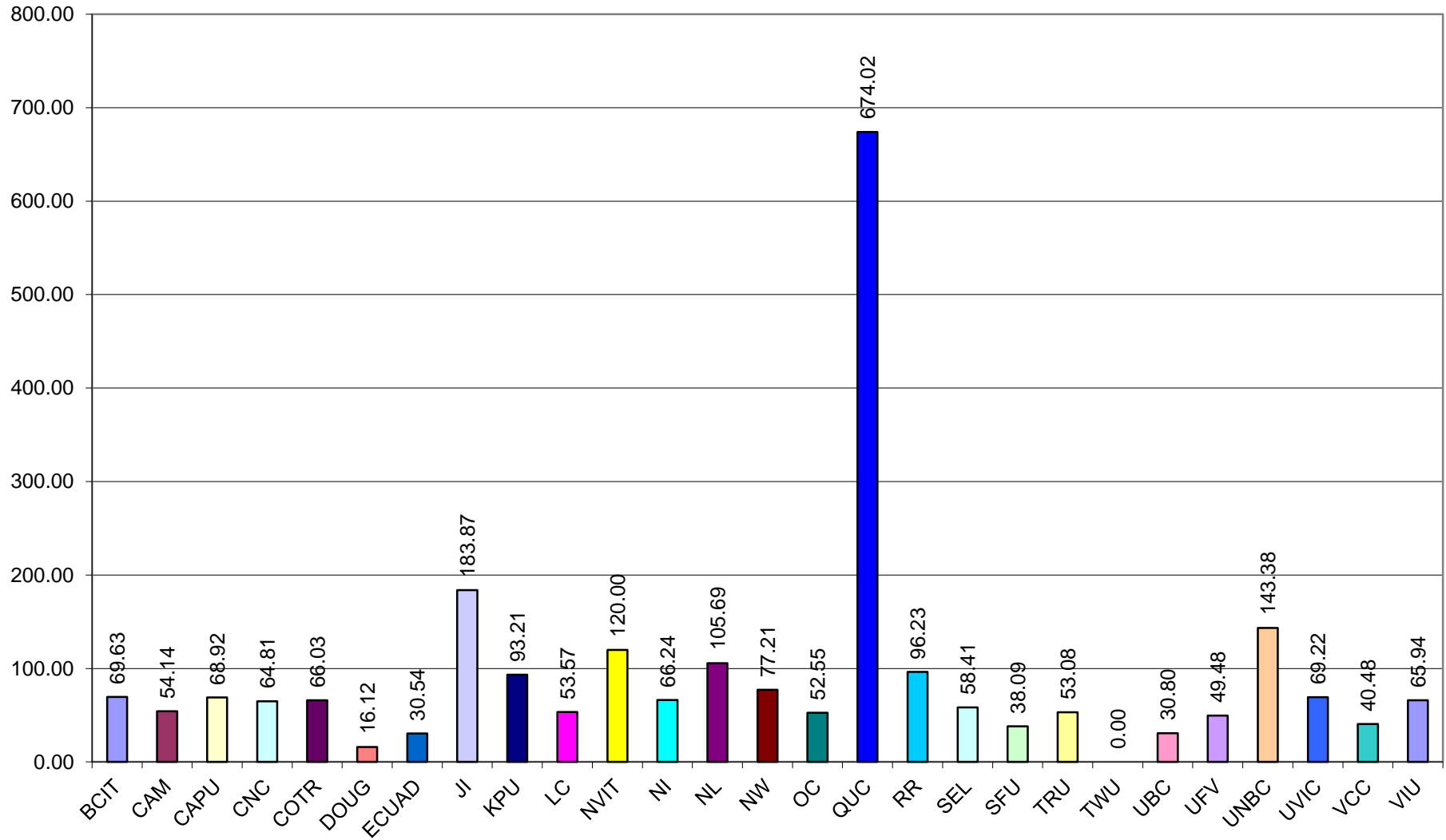
j) Direct Circulation per FTE Student: 6(d)/3(f)



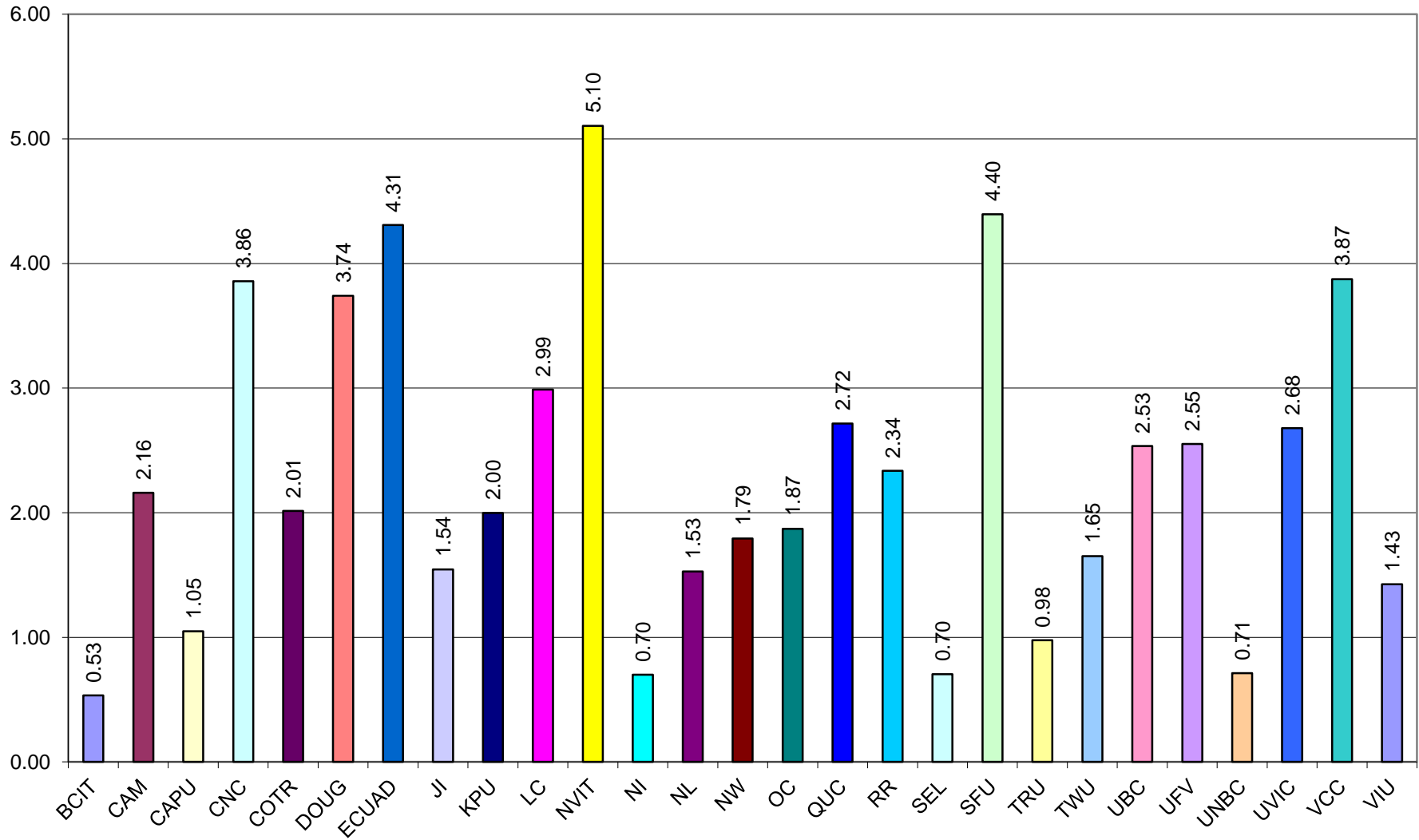
k) Direct Circulation per Total Volumes: 6(d)/5.1(f)



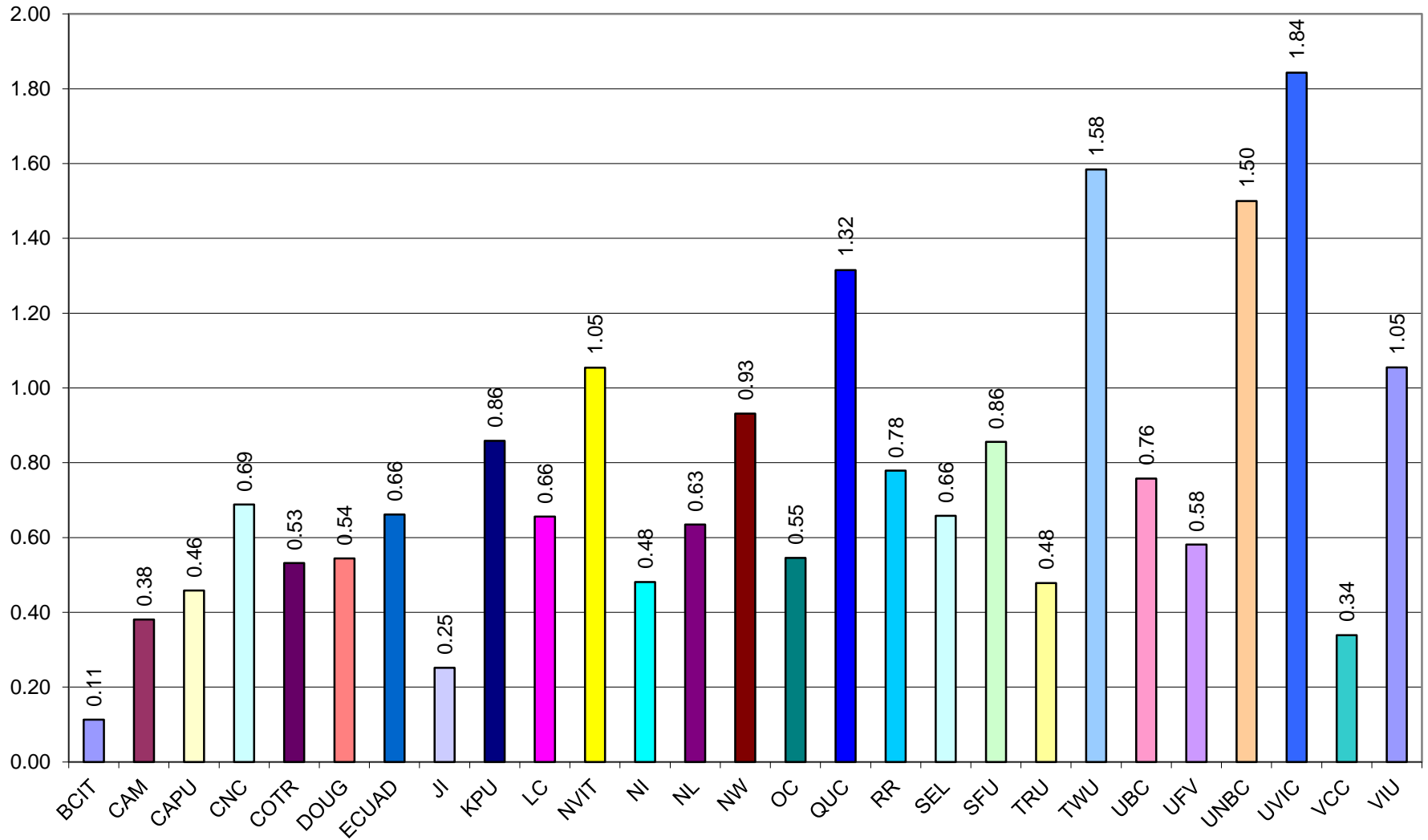
I) Total Library Expenditures per Circulation: 7(n)/6(d)



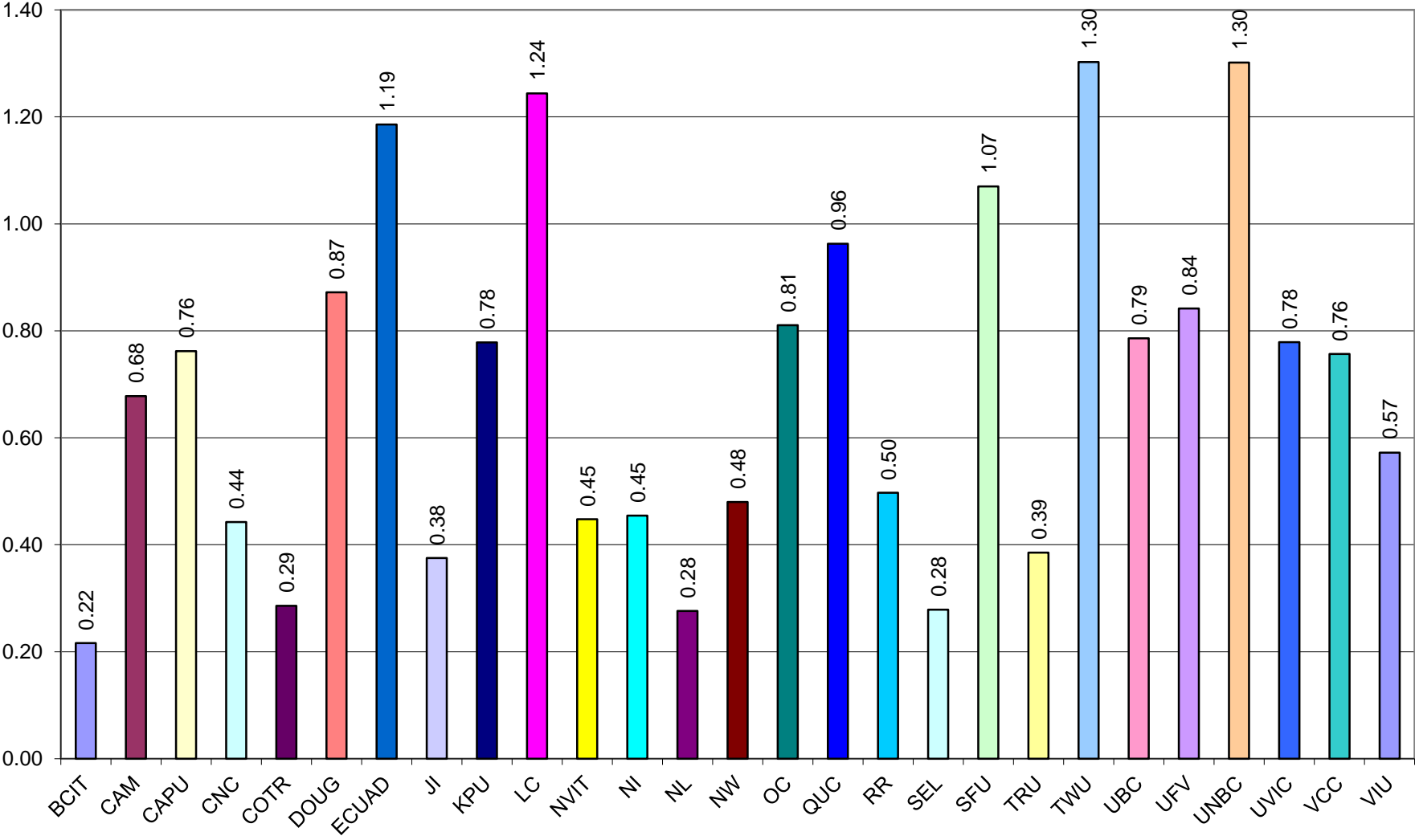
m) Reference Transactions per FTE Student: 6a(iii)/3(f)



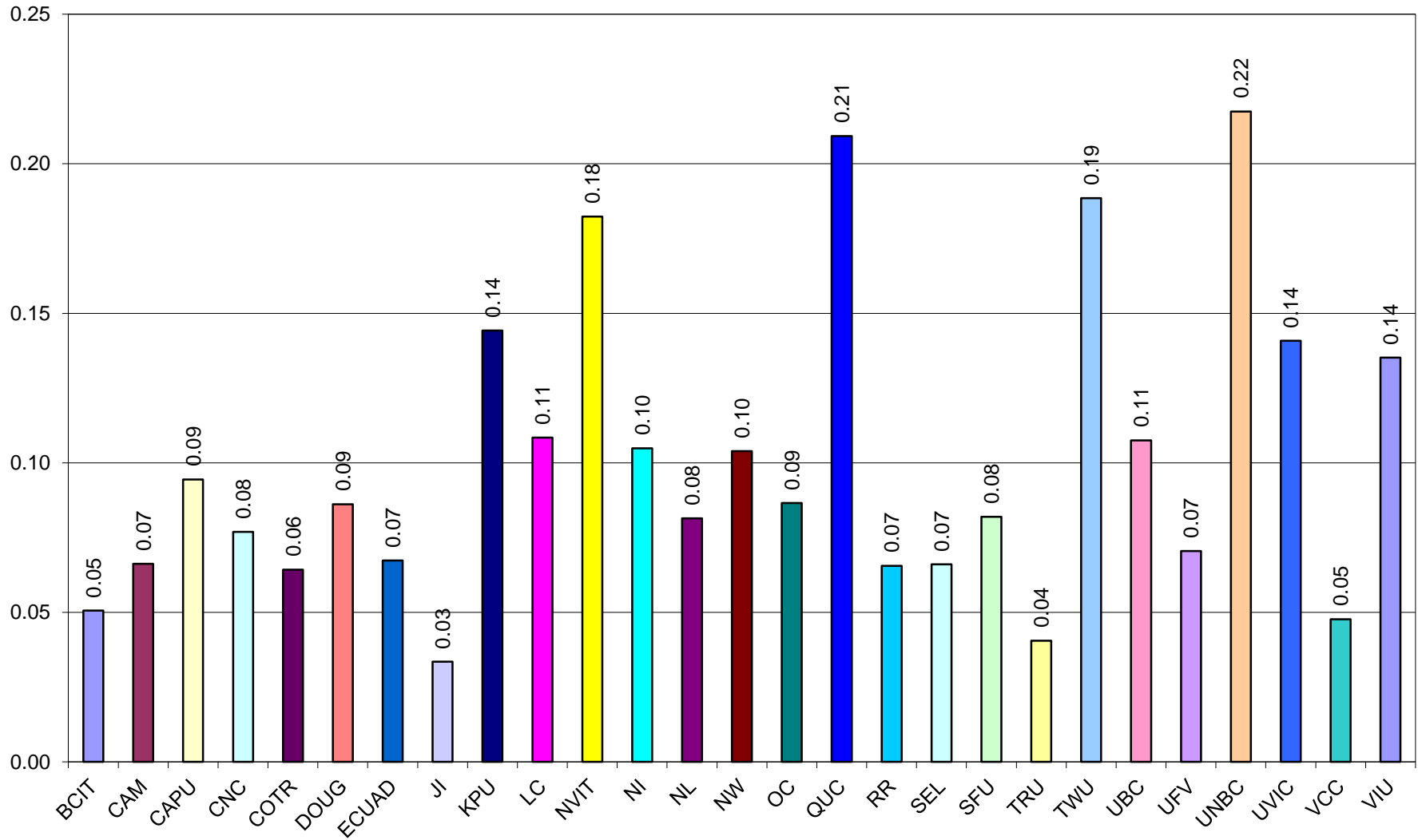
o) Total Library Area per FTE Student: 9(e)/3(f)



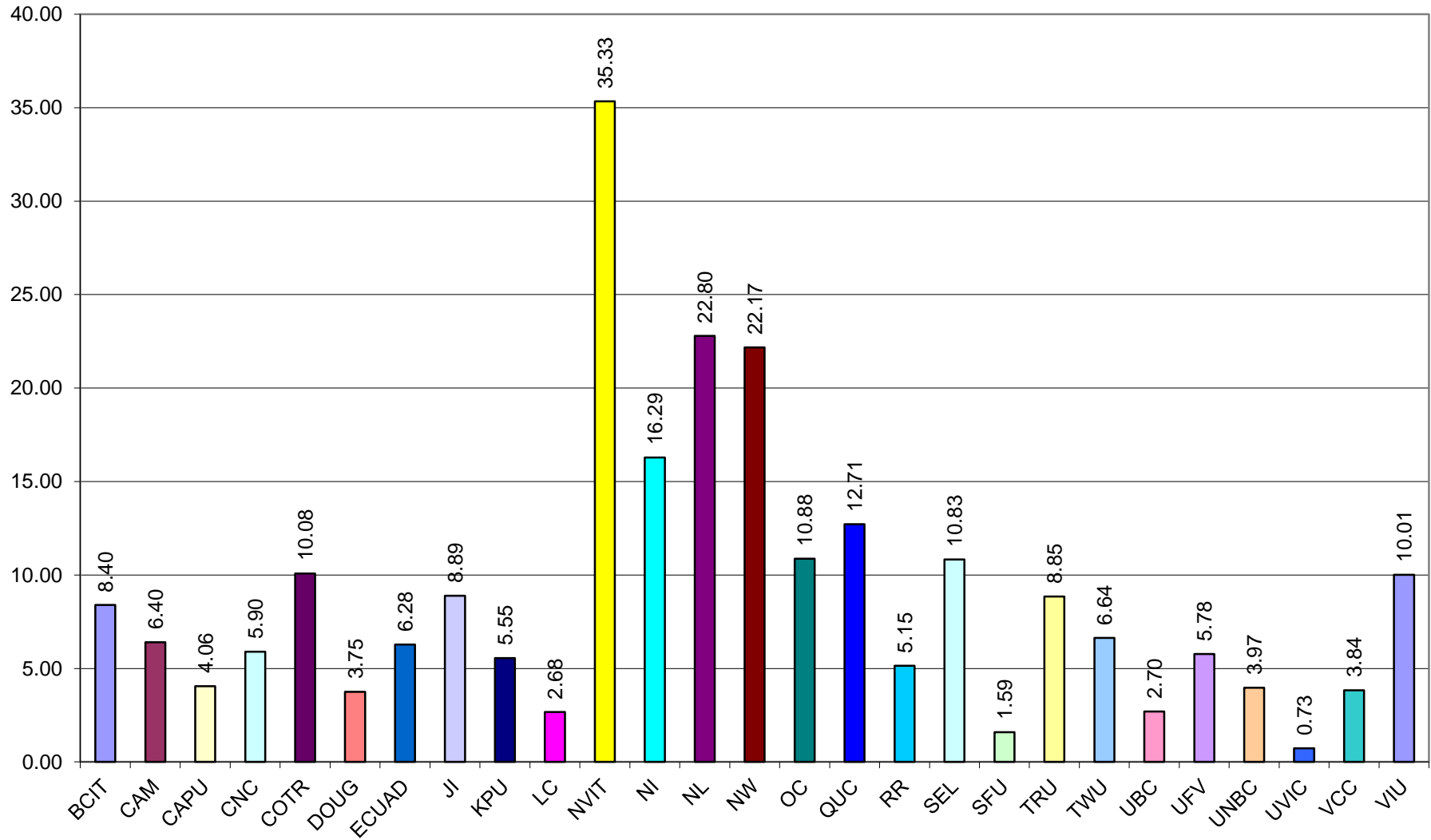
n) Number of Students Instructed per FTE Student: 6(b)/3(f)



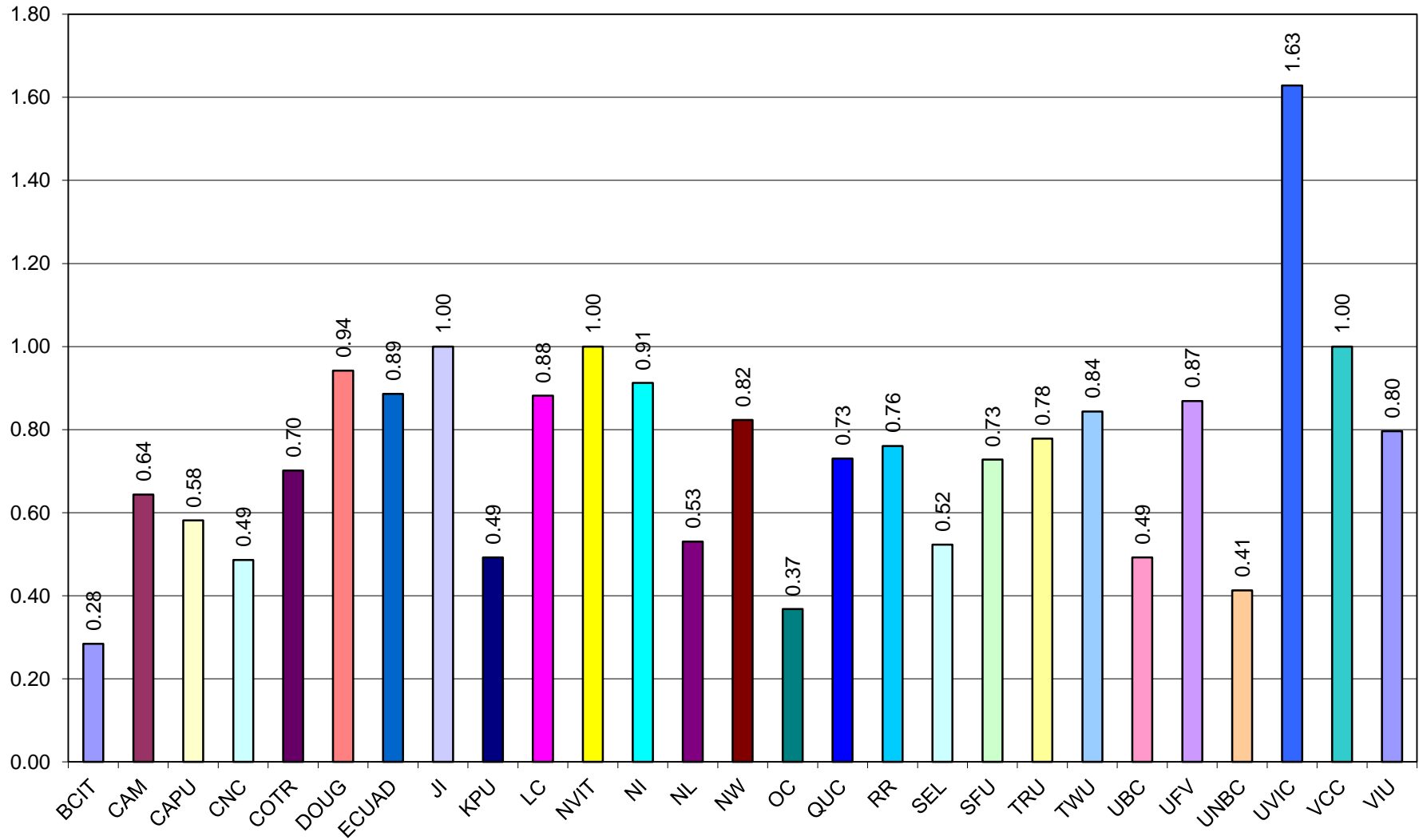
p) Number of Seats per FTE Student: 9(f)/3(f)



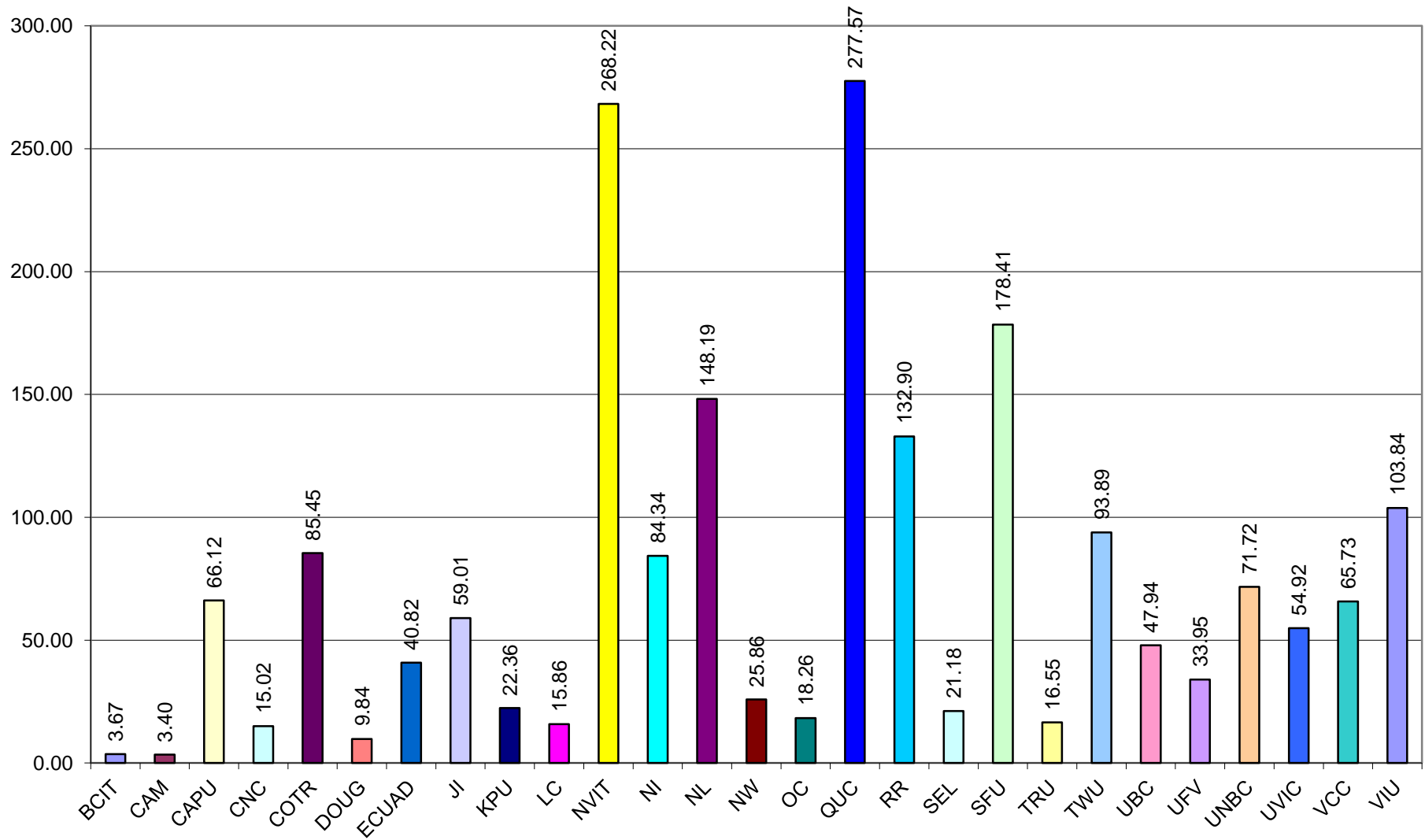
q) Hours Open per FTE Personnel: 9(g)/4(f)



r) Reference Hours per Total Open Hours: 9(h)/9(g)



s) Electronic Titles per FTE Student : 5.2(d) /3(f)



t) Electronic Expenditures per FTE Student: 7(j)/3(f)

