

CPSLD STATISTICS REPORT
2006/2007

COUNCIL OF POST-SECONDARY LIBRARY DIRECTORS OF B.C.
LIBRARY/LEARNING RESOURCES CENTRE SURVEY

DEFINITIONS	PAGE 1 to 7
SURVEY	PAGE 1 to 6
LEGEND	PAGE 1
DATA	PAGE 2
RATIOS	PAGE 22
NOTES	PAGE 23
GRAPHS	PAGE 26 to 43

COUNCIL OF POST-SECONDARY LIBRARY DIRECTORS B.C. LIBRARY/LEARNING RESOURCE CENTRE SURVEY

DEFINITIONS (Rev. June 1, 2007)

INTRODUCTION

This annual statistical survey is intended to provide a picture of the holdings and activities of Libraries in colleges, university/colleges, institutes, and universities of British Columbia for the fiscal year (**April 1 - March 31**). All information is based on the total count for one year.

The following activity, although under library jurisdiction in many institutions, is **excluded** from this report:

- audio-visual equipment distribution to classrooms
- audio-visual equipment maintenance
- media production or instructional media services.

A word of caution:

Comparison among institutions should be made with the understanding that each library operates somewhat differently and counts activities within a context unique to the institution. In addition, as access to electronic information becomes more important, holdings information is not always readily quantifiable or entirely meaningful and expenditure information is not found within the same budget categories in each institutional library.

Note: Do not add text into any field that will be totalled automatically as this will prevent the system from performing this addition.

Note: use the "Explanatory Notes" section at the bottom of the survey to provide additional information or any variations from the norm.

1. TYPE OF LIBRARY

self explanatory.

2. NUMBER OF CAMPUSES

Differentiate between those centres which have library staffing from those which are characterized as reading rooms and/or learning centres which have no staff or may have staff paid for by other parts of the institution.

- a. Number of campuses **with** library staff
- b. Number of campuses **without** library staff

3. USERS

FTE students :

NOTE – for sections a + j, this data will be completed for you based on data supplied by the Ministry of Advanced Education

k.FTE faculty:

- Provide FTE (not head count) of faculty employees (include librarians if applicable); approximate if actual number is not available;

Community Borrower Fee:

- Do not include the number of community borrowers as this figure does not represent active users for many institutions; provide only the annual fee if applicable.

l. Is there a community borrowers fee?

m. \$\$ amount

4. LIBRARY PERSONNEL

- Count all personnel in FTE terms (not head-counts);
- a. FTE librarians:**
- include all part-time and contract librarian hours;
 - include Library Director whether this is an administrative position or not;
 - include any positions funded by special grants or university-college access funds;
- b. FTE library staff:**
- exclude personnel who are entirely devoted to AV equipment and media production/IMS activities;
- c. Subtotal – FTE Library Personnel: (system will total automatically)**
- provide subtotal of personnel before counting student aides and work-study employees;
- d. FTE student aides:**
- include student aides and work-study employees
- e. Total FTE Library Personnel: (system will total automatically)**

5. COLLECTIONS

- **Volumes:** items that are barcoded separately or intended to be circulated as one unit, (e.g. a 20-volume set of encyclopedias = 20 units, 2 CDs plus booklet in one package = 1 unit; book plus CD = 1 unit; set of slides in a binder or a folio = 1 unit).
- a. Monographs:**
- a volume is a physical unit of any printed or processed work contained in one binding, encasement or other clear distinction, which has been catalogued as part of the collection and given an individual barcode;
 - **include** titles in microform or CD (not individual cards of fiche except when 1 card = 1 title);
 - **include** annuals;
 - **exclude** periodicals;
 - use explanatory notes for any unusual inclusions (e.g. documents, technical reports, individually catalogued maps).
- b. Videos & Films:**
- count all video & film formats;
 - count physical items (e.g. 2 film reels = 2 units, series of 24 videos = 24 units);
- c. Other Audio formats:**
- count all sound recordings (e.g. LP records, cassette tapes, compact disks);
 - count items intended to be used together as one unit (e.g. opera on 2 CDs = 1 unit);

- if two or more media are included (e.g. print and cassette tape), count as a single unit all items to be used in conjunction with each other.

d. Other Visual formats:

- count all visual formats (e.g. slides, snapshots)
- do not count individual slides unless they do not form part of a set (i.e. 1 slide set = 1 unit);
- if two or more media are included (e.g. print & slides), count as a single unit all items meant to be used in conjunction with each other.

e. Back Issues Periodicals:

- **include** journals, magazines, and newspapers received in print, microform, or CD formats;
- count volumes if they are known, otherwise 1 year = 1 volume;
- **include** annual index volumes.

f. Total Volumes in Library Collection: (system will total automatically)

- add $a + b + c + d + e = f$

Periodicals:

g. Total Current Print Subscriptions:

- count titles of journals, magazines, and newspapers currently received in print, microform, or CD formats (e.g. Canadian Newdisc = 8 titles);
- **exclude** annuals (counted in **a**) above);
- **include** gift subscriptions and those being received on exchange;
- **include** departmental subscriptions only if they are accessible to the college community (i.e. listed in library catalogue and available for use);
- count duplicate subscriptions (i.e. if the library subscribes to two copies of a title count 2);
- **include** Statistics Canada periodicals if they are treated like a periodical;
- **exclude** subscriptions to electronic periodical indexes and abstracts (expenditures information only required in **7.** below).

Electronic Titles

h. Catalogued Electronic Titles

- **Include** all purchased e-books, NetLibrary, e-journal titles purchased independently (i.e. not included in database subscriptions) and free catalogued websites, e-texts and e-journals
- use explanatory notes for any unusual inclusions (*confusion re classed serials counted as monographs or serials*)

6. USE

a. Reference transactions:

- encounters between a user and a library employee which involve an attempt to supply factual or bibliographic information, requiring knowledge, use, recommendation or interpretation of an information source or bibliographic tool;
- count all questions handled (i.e. directional, regular, and extended reference questions);
- **include** questions associated with electronic searching;
- **include** electronic reference questions
- **include** real-time-reference interactions (i.e. virtual reference)

- **exclude** questions associated specifically with a bibliographic instruction class.

Orientations:

b. Number of students taught:

- count all students receiving bibliographic instruction whether in tutorial groups, tours, or library skills classes;

c. Number of classes taught:

- count all classes (including instructional tours, taught by library employees, whether classes are arranged for instructional departments or independently offered by the library;
- **include** internet research or database searching classes;
- **include** classes taught to faculty and other employee groups.

Circulation:

d. Direct:

- count all items which are charged out for use, whether the use is inside (e.g. reserve) or outside the library;
- **include** self/online renewals
- **exclude** items charged out to other libraries on interlibrary loan (included in **g**) below).

e. In-library use:

- count those items being used in the library and re-shelved by library employees, but that have not been charged out for use in the direct circulation transaction.

f. Gate Count

- Count all traffic upon exit from the library (usually provided via an electric eye on the library security system)

Interlibrary loan:

- count all items actually received and sent via interlibrary loan;
- **include** items received or sent via any delivery method and from or to any type of library (including agencies with library holdings) in any part of the world;
- all NET, MEC, OJAC, and fileserver project figures are supplied by the ELN office;
- **exclude** intercampus loans within your institution.

g. Interlibrary loans received (include all formats)

h. Interlibrary loans sent (include all formats)

7. LIBRARY EXPENSES (capital & operating)

For purposes of consistency “expenditures” means actual expenditures vs budgeted expenditures.

a. Personnel (salaries & benefits):

- count all salary & benefit expenditures for library personnel as listed in **4** above;
- **exclude** personnel not covered by this survey (e.g. AV equipment distribution, Media Production or IMS);
- **include** personnel working under special grant funding or university-college access funding.

Collections:

b. Monographs:

- count all expenditures on items listed as monographs in **5a** above;

c. Audio-Visual:

- count all expenditures on items listed in **5b + 5c + 5d** above:

d. Current Print Periodicals:

- count all expenditures on current subscriptions to print periodicals and indexes as included in **5g** above.

e. Special Funding Envelopes for Collections

- **Include** all expenditures from special funding sources e.g. one time capital grants

f. Subtotal Collections: (system will total automatically)

- $b + c + d + e = f$

Electronic Materials:

g. ELN services:

- count all expenditures as a partner library to ELN subscription services.

h. Non-ELN subscriptions:

- count all expenditures on electronic subscription services (index, abstract, and full-text) that are not provided through the ELN service;
- **exclude** subscriptions which are included in **7d** above;
- **include** expenditures on databases (e.g. Wilson Indexes) if they are negotiated through your library and mounted on your local system.

i. Subtotal Electronic Products (system will total automatically)

- $g + h = i$

j. Total Collections Budget: (system will total automatically)

- $f + i = j$

k. Other:

- count all other library expenditures (i.e. those expenditures that are not related to personnel and collections);

- **include** only those other costs (e.g. printing, postage, interlibrary loans, mileage, conferences, supplies, etc.) if they are paid by the library's budget;
 - use explanatory notes to indicate any variations from the norm.
- i. **Total Library Budget: (system will total automatically)**
 - ii. **a+j+k**

8. INSTITUTIONAL BUDGET

- a. **base ministry grant** as outlined in the grant allocation sent by the ministry to each institution in March (usually) for the next fiscal year;
- b. **Other operating funds**
 - **include** all items that are considered in calculating your institution's operating budget;
 - **exclude** institutional capital (i.e. new building funds, upgrading of present buildings, roads etc.)
 - use explanatory notes to provide details on any exceptions or variations from the norm.
- c. **Total Institutional Budget: (system will total automatically)**
 - **a+b**

9. FACILITIES & HOURS (system will tally automatically for all sections)

e Total library area in square meters

- for each campus with library personnel provide library area in square meters (to convert from square ft. to square meters multiply sq. ft. by .0929, e.g. 30,000 sq. ft. x .0929 = 2787 sq. meters);
- **include** space for books and other library materials, space for storage of AV equipment if control of this equipment is the library's responsibility, library classrooms, study stations, seminar and study rooms, and workspace for library personnel;
- **exclude** areas used solely for janitorial, custodial and mechanical storage or services, lobbies, vestibules, building corridors, and other general access areas;
- add figures for each library to provide total for **e**.

f. Total number of seats:

- for each campus with library personnel count all study spaces for library users;
- **exclude** seats in staff areas, offices, meeting rooms, and other areas not normally occupied by users of library materials;
- add figures for each library to provide total for **f**.

g. Total hours open per week: (September – April)

- for each campus with library personnel count total operating hours per week;
- add figures for each library to provide total for **g**.

h. Total reference hours per week: (September – April)

- for each campus with library personnel count total hours of reference service provided;
- add figures for each library to provide total for **h**.

10. COMPUTING INFRASTRUCTURE

- a. Number of public workstations
 - For each campus library, count all public workstations that have Internet access
- b. Wireless available in each library? Y/N (use notes for clarification)
- c. Number of laptops available for borrowing from library
- d. Number of times laptops circulated from library
- e. Number of laptop ports/docking stations available for each campus library
- f. Mobile devices other than laptops supported by library? Y/N if Y, please clarify

11. LIBRARY AUTOMATED SYSTEMS

- self explanatory;
- use explanatory notes for any variations.

LEGEND

BCIT	BRITISH COLUMBIA INSTITUTE OF TECHNOLOGY
CAM	CAMOSUN COLLEGE
CAP	CAPILANO COLLEGE
CNC	COLLEGE OF NEW CALEDONIA
DOUG	DOUGLAS COLLEGE
ECIAD	EMILY CARR INSTITUTE OF ART & DESIGN
JI	JUSTICE INSTITUTE OF B.C.
KW	KWANTLEN UNIVERSITY COLLEGE
LC	LANGARA COLLEGE
MAL	MALASPINA UNIVERSITY COLLEGE
NI	NORTH ISLAND COLLEGE
NL	NORTHERN LIGHTS COLLEGE
NW	NORTHWEST COMMUNITY COLLEGE
OC	OKANAGAN COLLEGE
RR	ROYAL ROADS UNIVERSITY
SEL	SELKIRK COLLEGE
SFU	SIMON FRASER UNIVERSITY
TRU	THOMPSON RIVERS UNIVERSITY
TWU	TRINITY WESTERN UNIVERSITY
UBC	UNIVERSITY OF BRITISH COLUMBIA
UCFV	UNIVERSITY COLLEGE OF THE FRASER VALLEY
UNBC	UNIVERSITY OF NORTHERN BRITISH COLUMBIA
UVIC	UNIVERSITY OF VICTORIA
VCC	VANCOUVER COMMUNITY COLLEGE

	1. LIBRARY	2 Campus Staff Ratio		3. USERS								
	Library Type	a # of Campuses with Library Staff	b # of Campuses without Library Staff	a FTE AVED Ministry funded	b FTE Students (audited)	c ELTT Funded	d ELTT actual	a+c=e Service plan total funded	b+d=f Service plan total Actual	g ATT Funded	h ATT Actual	c+g=i ITA (ELTT + ATT) Funded
BCIT	Institute	3	2	19,017.00	11,630.20	1,795.00	1,841.10	20,812.00	13,471.30		4,922.30	1,795.00
CAM	College	2	0	6,691.00	6,043.00	423.00	652.00	7,114.00	6,695.00		1,279.00	423.00
CAP	College	1	2	5,423.00	4,612.40	101.00	69.90	5,524.00	4,682.30			101.00
CNC	College	5	1	3,012.00	2,071.80	405.00	344.00	3,417.00	2,415.80		780.00	405.00
DOUG	College	2		7,859.00	6,809.30			7,859.00	6,809.30			-
ECIAD	Institute	1		1,253.00	1,338.30			1,253.00	1,338.30			-
JI	Institute	1	6	2,302.00	2,627.30			2,302.00	2,627.30			-
KW	University College	4	0	8,837.00	8,053.00	729.00	466.00	9,566.00	8,519.00		504.00	729.00
LC	College	1	0	6,816.00	6,148.50			6,816.00	6,148.50			-
MAL	University College	3	1	6,566.00	5,478.00	501.00	531.00	7,067.00	6,009.00		538.00	501.00
NI	College	4	0	2,181.00	1,630.80	232.00	228.00	2,413.00	1,858.80		208.00	232.00
NL	College	2	6	1,452.00	858.70	200.00	287.00	1,652.00	1,145.70		329.00	200.00
NW	College	3	3	1,663.00	1,352.40	181.00	253.00	1,844.00	1,605.40	152.00	152.00	333.00
OC	College	4		4,160.00	4,020.30	215.00	218.20	4,375.00	4,238.50	834.00	1,587.50	1,049.00
RR	University	1	0	1,930.00	1,940.80			1,930.00	1,940.80			-

	1. LIBRARY	2 Campus Staff Ratio		3. USERS								
	Library Type	a # of Campuses with Library Staff	b # of Campuses without Library Staff	a FTE AVED Ministry funded	b FTE Students (audited)	c ELTT Funded	d ELTT actual	a+c=e Service plan total funded	b+d=f Service plan total Actual	g ATT Funded	h ATT Actual	c+g=i ITA (ELTT + ATT) Funded
SEL	College	3	5	2,301.00	1,877.60	184.00	232.10	2,485.00	2,109.70		201.50	184.00
SFU	University	3	0	18,343.00	19,471.80			18,343.00	19,471.80			-
TRU	University	3		8,026.00	6,728.10	513.00	369.40	8,539.00	7,097.50		879.10	513.00
TWU	University	1	0		2,239.00			-	2,239.00			-
UBC	University	3		37,987.00	38,263.10			37,987.00	38,263.10			-
UCFV	University College	3	1	5,610.00	5,784.70	216.00	177.00	5,826.00	5,961.70		301.00	216.00
UNBC	University	1	4	3,174.00	2,929.40			3,174.00	2,929.40			-
UVIC	University	1	0	15,272.00	15,790.00			15,272.00	15,790.00			-
VCC	College	2	0	6,371.00	5,607.00	1,146.00	869.10	7,517.00	6,476.10	1,024.00	767.00	2,170.00

					4. LIBRARY PERSONNEL				
	d+h=j	k	l	m	a	b	a + b = c	d	c + d = e
	ITA (ELTT = ATT) Actual	FTE Faculty	Annual fee for Community Borrowers?	FEE \$	FTE Librarians (including Director)	FTE Library Staff	FTE Personnel	FTE Student Aides	Total Personnel in FTE
BCIT	6,763.40	988.00	Yes	50	10.29	25.40	35.69		35.69
CAM	1,931.00	435.00	No		4.92	13.30	18.22	0.02	18.24
CAP	69.90	382.00	Yes	25	6.14	12.43	18.57	-	18.57
CNC	1,124.00	219.00	No		4.00	8.20	12.20	-	12.20
DOUG	-	445.00	Yes	25	11.03	26.00	37.03	1.77	38.80
ECIAD	-	139.00	Yes	60	2.60	7.54	10.14	0.50	10.64
JI	-	128.00	No		4.00	3.20	7.20	-	7.20
KW	970.00	588.00	Yes	45	16.25	26.47	42.72	3.86	46.58
LC	-	373.00	Yes	15	10.45	17.6	28.05	0	28.05
MAL	1,069.00	513.90	Yes	25	8.60	21.10	29.70	2.00	31.70
NI	436.00	143.00	No		2.00	7.00	9.00	1.00	10.00
NL	616.00	127.00	No		2.00	4.50	6.50	-	6.50
NW	405.00	104.00	No		2.90	4.70	7.60		7.60
OC	1,805.70	263.70	Yes	15	8.00	22.00	30.00	1.50	31.50
RR	-	40.00	Yes	25	4.60	11.60	16.20	-	16.20

					4. LIBRARY PERSONNEL				
	d+h=j	k	l	m	a	b	a + b = c	d	c + d = e
	ITA (ELTT = ATT) Actual	FTE Faculty	Annual fee for Community Borrowers?	FEE \$	FTE Librarians (including Director)	FTE Library Staff	FTE Personnel	FTE Student Aides	Total Personnel in FTE
SEL	433.60	189.00	No		2.00	6.80	8.80	-	8.80
SFU	-	880.00	Yes	100	40.70	101.90	142.60	11.50	154.10
TRU	1,248.50	525.00	Yes	25	10.00	22.00	32.00	1.70	33.70
TWU	-	125.00	Yes	60	7.00	8.00	15.00	4.00	19.00
UBC	-	2,359.00	Yes	120	80.00	192.90	272.90	29.10	302.00
UCFV	478.00	467.00	Yes	25	6.60	16.75	23.35	0.93	24.28
UNBC	-	258.00	Yes	25	8.30	20.30	28.60	2.29	30.89
UVIC	-	783.00	Yes	50	34.00	110.90	144.90	19.70	164.60
VCC	1,636.10	451.00	No		9.22	23.77	32.99		32.99

	5. COLLECTIONS							
	a	b	c	d	e	a+b+c+d+e = f	g	h
	Monographs	Videos & Films	Other Audio Formats	Other Visual Formats	Back Issues Periodicals	Total Collection	Total Print Subscriptions	Catalogued Electronic Titles
BCIT	176,808	8,935	142	-	16,650	202,535	659	2,156
CAM	64,400	4,250	400	65	10,000	79,115	390	37,578
CAP	115,445	4,839	3,351	8	19,041	142,684	429	3,143
CNC	165,239	6,167	1,028	376	21,819	194,629	337	1,658
DOUG	147,719	10,214	7,353	391	15,000	180,677	967	21,000
ECIAD	26,935	3,339	1,035	148,400	3,786	183,495	170	758
JI	22,429	4,444	216	43	4,339	31,471	185	1,869
KW	166,368	7,291	2,434	571	12,435	189,099	888	1,322
LC	87,144	10,622	3,113	523		101,402	637	1,647
MAL	247,553	8,463	3,501	1,213		260,730	767	15,264
NI	33,227	2,277	34	-	1,754	37,292	297	872
NL	44,274	5,778	112	572	521	51,257	209	127
NW	70,712	6,500	200	2,000	5,200	84,612	245	
OC	113,922	9,003				122,925	985	1,428
RR	50,045	648				50,693	146	32,949

	5. COLLECTIONS							
	a	b	c	d	e	a+b+c+d+e = f	g	h
	Monographs	Videos & Films	Other Audio Formats	Other Visual Formats	Back Issues Periodicals	Total Collection	Total Print Subscriptions	Catalogued Electronic Titles
SEL	80,866	3,487	478	121	9,070	94,022	400	848
SFU	2,322,156	7,645	62,687	640,392	283,958	3,316,838	6,047	683,387
TRU	205,680	10,143	2,420	2,228	48,035	268,506	884	30,178
TWU	233,550	3,895	1,075	79	83,592	322,191	1,086	12,929
UBC	10,646,233	26,799	86,277	498,745		11,258,054	24,482	326,001
UCFV	167,650	7,634	693	405	25,964	202,346	712	36,484
UNBC	285,969	3,943	178	394		290,484	913	4,777
UVIC	4,390,375	8,611	66,198			4,465,184	7,228	30,033
VCC	69,542	8,459	4,245	13	26,145	108,404	383	1,020

	6. USE							
	a	b	c	d	e	f	g	h
	Reference Transactions	Orientation: Number of Students Taught	Orientation: Number of Classes Taught	Circulation: Direct	Circulation: In-Library Use	Gate Count	ILL: Received (all formats)	ILL: Sent (include all formats)
BCIT	13,086	3,262	199	71,761	19,414	622,738	1,709	979
CAM	9,062	4,212	157	41,377		335,147	484	556
CAP	10,811	4,550	122	78,702		357,613	760	700
CNC	16,714	1,743	110	32,145	28,930	171,893	764	787
DOUG	22,348	7,197	362	219,381	13,000	577,833	1,160	974
ECIAD	4,264	346	24	60,343			107	157
JI	4,078	488	35	7,875	860	42,889	137	723
KW	31,825	8,586	327	76,807	26,253	611,738	1,567	956
LC	14,435	4,548	173	76,557		360,715	1,438	443
MAL	27,402	3,788	221	150,044		362,728	7,629	1,443
NI	2,197	719		10,618	3,502	140,332	1,128	280
NL	7,562	473	53	6,958	342	75,784	608	220
NW		950	62	16,579		33,602	621	312
OC	13,418	3,902	193	32,276			1,864	1,046
RR	2,875	2,636	98		526	66,109	222	303

	6. USE							
	a	b	c	d	e	f	g	h
	Reference Transactions	Orientation: Number of Students Taught	Orientation: Number of Classes Taught	Circulation: Direct	Circulation: In-Library Use	Gate Count	ILL: Received (all formats)	ILL: Sent (include all formats)
SEL	6,720	916	87	15,808	5,317	58,719	660	442
SFU	107,953	22,789	1,029	629,316	211,999	1,905,192	22,030	16,584
TRU	18,958	3,811	235	167,114		235,596	2,961	1,579
TWU	3,859	1,500	25	118,108		161,417	1,611	550
UBC	199,127	28,795	1,506	2,971,834		2,957,508	23,269	28,417
UCFV	15,004	5,975	239	130,976	22,141	280,332	2,708	1,209
UNBC	5,633	1,877	93	77,465		2,782	4,428	1,518
UVIC	38,681	9,246	418	480,982	464,770	2,284,192	17,162	4,832
VCC	29,723	3,636	214	123,175	43,994	409,281	840	637

7. LIBRARY EXPENSES (CAPITAL AND OPERATING):										
	a	b	c	d	e	b+c+d+e = f	g	h	g+h=i	f + i = j
	Personnel (Salaries and fringe benefits)	Monographs	Audio-Visual	Current Print Periodicals	Special Funding Envelopes for Collections	Subtotal	ELN Services	Non-ELN Subscriptions	Subtotal	Total Collection Budget
BCIT	2,167,804.00	274,607.00	33,069.00	157,044.00	-	464,720.00	67,601.00	255,508.00	323,109.00	787,829.00
CAM	1,127,516.00	105,715.00	20,125.00	43,260.00		169,100.00	50,375.00	14,645.00	65,020.00	234,120.00
CAP	907,983.00	129,220.00	11,192.00	63,618.00		204,030.00	43,020.00	380.00	43,400.00	247,430.00
CNC	720,888.00	81,078.00		47,833.00		128,911.00	31,886.00		31,886.00	160,797.00
DOUG	2,201,700.00	188,500.00	54,900.00	100,800.00		344,200.00	81,500.00	34,000.00	115,500.00	459,700.00
ECIAD	615,219.00	46,542.00	24,859.00	19,179.00		90,580.00	28,153.00	13,912.00	42,065.00	132,645.00
JI	355,019.00	25,023.00	16,059.00	21,871.00	20,147.00	83,100.00	30,395.00	7,541.00	37,936.00	121,036.00
KW	2,740,358.00	437,441.00	52,262.00	153,911.00	11,824.00	655,438.00	127,276.00	66,008.00	193,284.00	848,722.00
LC	1,920,477.00	84,083.00	32,169.00	52,709.00		168,961.00	54,296.00	4,098.00	58,394.00	227,355.00
MAL	1,733,709.00	340,142.00		109,212.00		449,354.00	80,605.00	474,737.00	555,342.00	1,004,696.00
NI	468,364.00	54,316.00		20,212.00		74,528.00	24,868.00		24,868.00	99,396.00
NL	383,173.00	24,931.00	12,034.00	22,359.00		59,324.00	38,241.00		38,241.00	97,565.00
NW	521,049.00	63,000.00		17,000.00		80,000.00	19,700.00		19,700.00	99,700.00
OC	1,556,000.00	348,000.00	10,000.00	140,000.00	480,000.00	978,000.00	115,000.00	73,000.00	188,000.00	1,166,000.00
RR	1,178,506.00	50,065.00	4,388.00	35,556.00		90,009.00	80,691.00	194,625.00	275,316.00	365,325.00

7. LIBRARY EXPENSES (CAPITAL AND OPERATING):										
	a	b	c	d	e	b+c+d+e = f	g	h	g+h=i	f + i = j
	Personnel (Salaries and fringe benefits)	Monographs	Audio-Visual	Current Print Periodicals	Special Funding Envelopes for Collections	Subtotal	ELN Services	Non-ELN Subscriptions	Subtotal	Total Collection Budget
SEL	517,010.00	22,586.00	3,709.00	51,612.00		77,907.00	24,623.00		24,623.00	102,530.00
SFU	8,772,366.00	3,498,852.00	134,682.00	2,004,200.00	85,625.00	5,723,359.00	263,209.00	3,509,295.00	3,772,504.00	9,495,863.00
TRU	1,701,945.00	463,491.00		274,661.00	342,347.00	1,080,499.00	119,855.00	338,672.00	458,527.00	1,539,026.00
TWU	716,000.00	241,200.00	8,500.00	65,000.00	130,000.00	444,700.00	59,429.53	39,964.00	99,393.53	544,093.53
UBC	17,472,998.00	3,705,425.00		4,140,513.00	-	7,845,938.00	736,997.00	7,209,011.00	7,946,008.00	15,791,946.00
UCFV	1,373,952.00	322,458.00	6,111.00	187,062.00	-	515,631.00	106,699.00	251,576.00	358,275.00	873,906.00
UNBC	1,490,363.00	172,296.00	14,425.00	496,931.00	-	683,652.00	127,773.00	553,787.00	681,560.00	1,365,212.00
UVIC	6,697,730.00	1,564,618.00		4,571,851.00		6,136,469.00			-	6,136,469.00
VCC	2,157,402.00	116,158.00	45,976.00	42,163.00	45,000.00	249,297.00	68,301.41	3,915.00	72,216.41	321,513.41

			8. INSTITUTIONAL BUDGET		
	k	a + j + k = l	a	b	a + b = c
	Other	Total Library Budget	Base Grant from Ministry	Other operating Funds	Total Institutional Budget
BCIT	151,377.00	3,107,010.00	115,476,037.00	108,710,907.00	224,186,944.00
CAM	75,660.00	1,437,296.00	42,543,541.00	37,420,076.00	79,963,617.00
CAP	76,876.00	1,232,289.00	32,521,520.00	25,783,740.00	58,305,260.00
CNC	60,880.00	942,565.00	25,271,818.00	3,436,972.00	28,708,790.00
DOUG	68,900.00	2,730,300.00	50,766,000.00	28,301,000.00	79,067,000.00
ECIAD		747,864.00	11,627,553.00	7,990,726.00	19,618,279.00
JI	64,185.00	540,240.00	6,611,324.00	26,950,723.00	33,562,047.00
KW	144,229.00	3,733,309.00	55,731,000.00	38,707,900.00	94,438,900.00
LC		2,147,832.00	35,716,094.00	1,186,667.00	36,902,761.00
MAL	109,094.00	2,847,499.00	73,564,427.00		73,564,427.00
NI	41,780.00	609,540.00	21,694,615.00	3,547,116.00	25,241,731.00
NL		480,738.00	17,283,282.00	12,339,614.00	29,622,896.00
NW	30,020.00	650,769.00	16,049,964.00	7,470,005.00	23,519,969.00
OC		2,722,000.00	64,036,452.00	11,078,163.00	75,114,615.00
RR		1,543,831.00	14,060,000.00	34,090,000.00	48,150,000.00

			8. INSTITUTIONAL BUDGET		
	k	a + j + k = l	a	b	a + b = c
	Other	Total Library Budget	Base Grant from Ministry	Other operating Funds	Total Institutional Budget
SEL	52,547.00	672,087.00	22,175,294.00	6,140,959.00	28,316,253.00
SFU	1,011,530.00	19,279,759.00	178,147,000.00	214,169,000.00	392,316,000.00
TRU	236,343.00	3,477,314.00	63,539,870.00	41,529,278.00	105,069,148.00
TWU	75,000.00	1,335,093.53			-
UBC	3,126,635.00	36,391,579.00	435,842,000.00	242,819,000.00	678,661,000.00
UCFV	99,511.00	2,347,369.00	37,802,017.00	29,115,827.00	66,917,844.00
UNBC		2,855,575.00	36,998,000.00	17,574,000.00	54,572,000.00
UVIC	1,746,408.00	14,580,607.00	155,608,000.00	97,862,000.00	253,470,000.00
VCC		2,478,915.41	52,633,958.00	32,276,039.00	84,909,997.00

9. FACILITIES AND HOURS: For each staffed Library										
		a	b	c	d		a	b	c	d
	Campus Name	Total area in square meters	Total number of seats	Total hours open per week	Total reference hours per week	Campus Name	Total area in square meters	Total number of seats	Total hours open per week	Total reference hours per week
BCIT	BCIT Burnaby Campus	1,722.00	826.00	89.50	62.00	BCIT Marine Campus	232.00	53.00	35.00	7.00
CAM	Lansdowne	3,325.00	304.00	73.00	53.00	Interurban	1,139.00	152.00	54.00	20.00
CAP	North Vancouver	3,716.00	360.00	74.50	74.50	Sunshine Coast (Sechelt)	98.90	30.00	47.50	-
CNC	Prince George	2,300.00	257.00	70.00	35.00					
DOUG	New Westminster	3,448.50	390.00	71.00	71.00	David Lam	1,714.00	339.00	71.00	71.00
ECIAD		992.00	85.00	70.50	70.50					
JI	New Westminster (Main Campus)	654.00	65.00	52.00	52.00	na				
KW	Langley	1,190.00	190.00	68.25	62.00	Richmond	1,700.00	210.00	68.25	62.00
LC	Langara	4,743.00	416.00	66.00	66.00					
MAL	Nanaimo	6,812.00	677.00	75.00	75.00	Cowichan	305.00	87.00	64.00	64.00
NI	Comox Valley	495.00	87.00	54.00	54.00	Campbell River	305.00	69.00	54.00	54.00
NL	Dawson Creek	420.00	48.00	60.00	35.00	Fort St. John	350.00	51.00	60.00	35
NW	Terrace	903.00	80.00	69.00	20.00	Prince Rupert	111.00	25.00	47.00	15.00
OC	Kelowna	728.34	98.00	84.00	52.00	Penticton	415.73	78.00	74.00	
RR	Royal Roads University	1,900.00	160.00	81.50	62.00					

9. FACILITIES AND HOURS: For each staffed Library										
		a	b	c	d		a	b	c	d
	Campus Name	Total area in square meters	Total number of seats	Total hours open per week	Total reference hours per week	Campus Name	Total area in square meters	Total number of seats	Total hours open per week	Total reference hours per week
SEL	Castlegar campus	1,250.00	124.00	61.50	51.00	Silver King campus	155.00	15.00	20.00	20.00
SFU	Burnaby	16,503.00	1,157.00	99.00	86.00	Vancouver	765.00	156.00	67.00	67.00
TRU	Kamloops	2,903.00	185.00	81.00	81.00	Williams Lake	172.00	20.00	58.00	30.00
TWU	Norma Marion Alloway Library	3,344.50	338.00	83.00	60.00					
UBC	Point Grey	47,264.00	4,065.00	1,071.50	720.00	Robson Square	800.00	23.00	36.00	32.50
UCFV	Abbotsford	3,149.00	150.00	80.00	74.00	Chilliwack	315.00	12.00	70.50	70.50
UNBC	Geoffrey R. Weller Library	5,840.00	506.00	92.00	56.00					
UVIC	MAIN	21,156.76	1,631.00	91.00	90.00					
VCC	Broadway Campus	1,603.00	163.00	56.00	56.00	Downtown Campus	675.00	87.00	62.00	56.00

9. FACILITIES AND HOURS: For each staffed Library (Cont.)													
		a	b	c	d		a	b	c	d	e	f	g
	Campus Name	Total area in square meters	Total number of seats	Total hours open per week	Total reference hours per week	Campus Name	Total area in square meters	Total number of seats	Total hours open per week	Total reference hours per week	Total square meters all campuses	Total seats all campuses	Total open hours all campuses
BCIT	BCIT Aerospace and Technology Campus	257.90	86.00	47.00	7.00						2,211.90	965.00	171.50
CAM											4,464.00	456.00	127.00
CAP	Squamish	11.90	6.00	47.50	-						3,826.80	396.00	169.50
CNC											2,300.00	257.00	70.00
DOUG											5,162.50	729.00	142.00
ECIAD											992.00	85.00	70.50
JI	na					na					654.00	65.00	52.00
KW	Surrey	1,720.00	326.00	68.25	62.00	Cloverdale	546.00	86.00	60.00	16.00	5,156.00	812.00	264.75
LC											4,743.00	416.00	66.00
MAL	Powell River	161.00	20.00	25.00	25.00						7,278.00	784.00	164.00
NI	Port Alberni	198.00	52.00	52.00	52.00	Port Hardy	308.00	19.00	5.50	5.50	1,306.00	227.00	165.50
NL	Fort Nelson	103	25	46	40						873.00	124.00	166.00
NW	Smithers	50.00	10.00	18.00	18.00						1,064.00	115.00	134.00
OC	Salmon Arm	382.75	70.00	72.00		Vernon	647.98	96.00	74.50		2,174.80	342.00	304.50
RR											1,900.00	160.00	81.50

9. FACILITIES AND HOURS: For each staffed Library (Cont.)

		a	b	c	d		a	b	c	d	e	f	g
	Campus Name	Total area in square meters	Total number of seats	Total hours open per week	Total reference hours per week	Campus Name	Total area in square meters	Total number of seats	Total hours open per week	Total reference hours per week	Total square meters all campuses	Total seats all campuses	Total open hours all campuses
SEL	Tenth St. campus	105.00	4.00	17.50	17.50						1,510.00	143.00	99.00
SFU	Surrey	2,137.00	250.00	69.00	54.50						19,405.00	1,563.00	235.00
TRU	Burnaby	202.40	13.00	35.00	35.00						3,277.40	218.00	174.00
TWU											3,344.50	338.00	83.00
UBC	UBC Okanagan	2,323.00	422.00	86.50	76.00						50,387.00	4,510.00	1,194.00
UCFV	Mission	30.00	12.00	18.00	18.00						3,494.00	174.00	168.50
UNBC											5,840.00	506.00	92.00
UVIC											21,156.76	1,631.00	91.00
VCC											2,278.00	250.00	118.00

10. COMPUTING INFRASTRUCTURE								
	h	a	b	c	d	e	f	
	Total reference hours all campuses	# of public workstations	Wireless available	# of laptops available	# of laptops circulated	# of laptop ports	Other Mobile devices	If yes, please clarify
BCIT	76.00	116.00	Yes	11.00	2,379.00	71.00	yes	LCD projectors
CAM	73.00	54.00	Yes				No	
CAP	74.50	56.00	Yes	8.00	1,982.00	37.00	No	
CNC	35.00	43.00	Yes			8.00		
DOUG	142.00	190.00	Yes	20.00	1,760.00		Yes	lcd projectors
ECIAD	70.50	14.00	Yes					
JI	52.00	23.00	Yes	-	-	8.00	No	
KW	202.00	166.00	Yes	21.00	2,354.00	-	Yes	Cameras (35 mm), Digital cameras, digital camcorders, light sets, tripods, Computer on Wheels, Data Projectors, Slide projectors, Overhead projectors, Video projectors, USB Drive, Laser disk player, TV/VCR/DVD units, DVD player, blaster/CD players, Cassette recorders, Walkmans, PA system.
LC	66.00	181.00	Yes	-	-	50 - power only	Yes	Wireless Internet with Innovative's AirPac product allows any wireless device with browser capability to access the OPAC
MAL	164.00	129.00	Yes			62.00	No	
NI	165.50	46.00	Yes					
NL	110.00	36	Yes	4			No	
NW	53.00	28.00	No				No	
OC	52.00	123.00	Yes	30.00			No	
RR	62.00	45.00	Yes	-	-	19.00	No	

10. COMPUTING INFRASTRUCTURE								
	h	a	b	c	d	e	f	
	Total reference hours all campuses	# of public workstations	Wireless available	# of laptops available	# of laptops circulated	# of laptop ports	Other Mobile devices	If yes, please clarify
SEL	88.50	27.00	Yes				No	
SFU	207.50	391.00	Yes	73.00	31,759.00	45.00	No	
TRU	146.00	43.00	Yes	5.00	821.00	11.00	No	
TWU	60.00	25.00	Yes				No	
UBC	828.50	566.00	Yes	50.00	10,900.00	157.00	No	
UCFV	162.50	42.00	Yes	-	-	-	No	
UNBC	56.00	94.00	Yes	-	-	-	No	
UVIC	90.00	202.00	Yes	20.00	2,655.00	110.00	No	
VCC	112.00	27.00	No	-	-	-	No	

11 LIBRARY AUTOMATED SYSTEM							
	Cataloguing	Primary source of bibliographic records	Secondary source of bibliographic records	OPAC	Periodicals Check In	Acquisitions	Interlibrary Loans
BCIT	Innovative	OCLC/LC	OCLC/BLACKWELL'S	Innovative			
CAM	SIRSI Unicorn	Agent, Amicus via Smartport (Z39.50)	UAlberta, UBC, Melvyl	SIRSI Webcat	SIRSI Unicorn	SIRSI Unicorn	Ariel/Outlook
CAP	Innovative Interfaces Inc.	AG Canada	LC, AEMAC	INNOPAC	Innovative	Innovative	Ariel/Outlook
CNC	Sirsi	Amicus	LC	Sirsi WebCat			Agent, e-mail
DOUG	INNOVATIVE	INNOVATIVE via Z39.50	AG Canada, OCLC, Amicus	INNOVATIVE	INNOVATIVE	INNOVATIVE	Ariel/Outlook
ECIAD	SirsiDynix Horizon	Blackwell N.A.	United Library Services	Horizon	Horizon	Horizon	
JI	SIRSI	LC	AMICUS	SIRSI	SIRSI	SIRSI	Outlook ILL, ARIEL
KW	Sirsi	LC	UBC	SIRSI	SIRSI	SIRSI	GODOT, Ariel, Sirsi
LC	Innovative Interfaces Inc (III) - Millennium	Bookwhere	Z39.50 libraries	III - Millennium	III - Millennium	III - Millennium	Ariel - Outlook
MAL	SIRSI	BIBLIOFILE/AMICUS	BOOKWHERE	SIRSI	SIRSI	SIRSI	RELAIS
NI	Sirsi	LC/National Library/Outlook		Sirsi		Sirsi	Agent, e-mail
NL	Sirsi Unicorn	Amicus	Outlook	Sirsi WebCat	Sirsi	Sirsi	Agent
NW	Sirsi Unicorn	Amicus	Outlook/CIP	Sirsi	manual	Colleague	manual/Outlook
OC	Endeavor	Blackwells	Endeavor Voyager	Endeavor Voyager	Endeavor Voyager	Endeavor Voyager	
RR	Voyager (Endeavor)	bn	Z39.50 Amicus	Voyager (Endeavor)	Voyager (Endeavor)	Voyager (Endeavor)	

11 LIBRARY AUTOMATED SYSTEM							
	Cataloguing	Primary source of bibliographic records	Secondary source of bibliographic records	OPAC	Periodicals Check In	Acquisitions	Interlibrary Loans
SEL	SIRSI	National Library/LC/Outlook	other Z39.50 sites	SIRSI	SIRSI	SIRSI	Ariel, Outlook
SFU	Innovative Interfaces, Inc. (III)	Blackwell's North America	OCLC and AG Canada	III Millennium	III Java Millennium	III Java Millennium	Relais
TRU	Sirsi/Unicorn	Blackwell North America	Amicus	Sirsi/Unicorn	Sirsi/Unicorn	Sirsi/Unicorn	Open ILL
TWU	SirsiDynix Horizon	OCLC	Amicus	SirsiDynix HIP	N/A	SirsiDynix Horizon	Relais / OCLC
UBC	Voyager (Ex Libris)	LC	OCLC	Voyager	Voyager	Voyager	RELAIS and others
UCFV	Sirsi	LC, Amicus, other libraries using Z39.50	see above	Sirsi	Sirsi	Sirsi	Godot, Outlook, Aviso, Amicus
UNBC	Innovative	OCLC	National Library of Canada	Innovative	Innovative	Innovative	Relais International
UVIC	Voyager/Endeavor	OCLC; AG Canada		Voyager/Endeavor	Voyager/Endeavor	Voyager/Endeavor	OCLC; Aviso
VCC	VTLS Virtua	B&T	BOOKWHERE	VTLS	VTLS	VTLS	VARIOUS

	a) Volumes/FTE Student: 5(f)/3(f)	b) Subscriptions/FTE Student: 5(g)/3(f)	c) Collection Budget/FTE Student: 7(j)/3(f)	d) Library Budget/ Student: 7(l)/3(f)	e) Collection Budget as % of Library Budget: 7(j)/7(l)	f) Periodicals as % of Library Budget: 7(d)/7(l)	g) Electronic Services as % of Library Budget: 7(l)/7(l)	h) Library Budget as % of Institutional Budget: 7(l)/8(c)	i) FTE Students/FTE Library Personnel: 3(F)/4(e)	j) Direct Circulation/FTE Student: 6(d)/3(f)	k) Direct Circulation/Total Volumes: 6(d)/5(f)	l) Total Library Budget/Circulation: 7(l)/6(d)	m) Reference Transactions/FTE Student: 6(a)/3(f)	n) Number of Students Instructed/FTE Students: 6(b)/3(f)	o) Total Library Area/FTE Students: 9(e) total /3(f)	p) Number of Seats/FTE Student: 9(f) total /3(f)	q) Hours Open/FTE Personnel: 9(g) total /4(e)	r) Reference Hours/Total Open Hours: 9(h) total /9(g)
Library	Ratios																	
BCIT	15.03	0.05	58.48	230.64	25%	5%	10%	1%	377.45	5.33	0.35	43.30	0.97	0.24	0.16	0.07	4.81	0.44
CAM	11.82	0.06	34.97	214.68	16%	3%	5%	2%	367.05	6.18	0.52	34.74	1.35	0.63	0.67	0.07	6.96	0.57
CAP	30.47	0.09	52.84	263.18	20%	5%	4%	2%	252.14	16.81	0.55	15.66	2.31	0.97	0.82	0.08	9.13	0.44
CNC	80.57	0.14	66.56	390.17	17%	5%	3%	3%	198.02	13.31	0.17	29.32	6.92	0.72	0.95	0.11	5.74	0.50
DOUG	26.53	0.14	67.51	400.97	17%	4%	4%	3%	175.50	32.22	1.21	12.45	3.28	1.06	0.76	0.11	3.66	1.00
ECIAD	137.11	0.13	99.11	558.82	18%	3%	6%	4%	125.78	45.09	0.33	12.39	3.19	0.26	0.74	0.06	6.63	1.00
JI	11.98	0.07	46.07	205.63	22%	4%	7%	2%	364.90	3.00	0.25	68.60	1.55	0.19	0.25	0.02	7.22	1.00
KW	22.20	0.10	99.63	438.23	23%	4%	5%	4%	182.89	9.02	0.41	48.61	3.74	1.01	0.61	0.10	5.68	0.76
LC	16.49	0.10	36.98	349.33	11%	2%	3%	6%	219.20	12.45	0.75	28.06	2.35	0.74	0.77	0.07	2.35	1.00
MAL	43.39	0.13	167.20	473.87	35%	4%	20%	4%	189.56	24.97	0.58	18.98	4.56	0.63	1.21	0.13	5.17	1.00
NI	20.06	0.16	53.47	327.92	16%	3%	4%	2%	185.88	5.71	0.28	57.41	1.18	0.39	0.70	0.12	16.55	1.00
NL	44.74	0.18	85.16	419.60	20%	5%	8%	2%	176.26	6.07	0.14	69.09	6.60	0.41	0.76	0.11	25.54	0.66
NW	52.70	0.15	62.10	405.36	15%	3%	3%	3%	211.24	10.33	0.20	39.25	0.00	0.59	0.66	0.07	17.63	0.40
OC	29.00	0.23	275.10	642.21	43%	5%	7%	4%	134.56	7.61	0.26	84.34	3.17	0.92	0.51	0.08	9.67	0.17
RR	26.12	0.08	188.23	795.46	24%	2%	18%	3%	119.80	0.00	0.00	#DIV/0!	1.48	1.36	0.98	0.08	5.03	0.76
SEL	44.57	0.19	48.60	318.57	15%	8%	4%	2%	239.74	7.49	0.17	42.52	3.19	0.43	0.72	0.07	11.25	0.89
SFU	170.34	0.31	487.67	990.14	49%	10%	20%	5%	126.36	32.32	0.19	30.64	5.54	1.17	1.00	0.08	1.52	0.88
TRU	37.83	0.12	216.84	489.94	44%	8%	13%	3%	210.61	23.55	0.62	20.81	2.67	0.54	0.46	0.03	5.16	0.84
TWU	143.90	0.49	243.01	596.29	41%	5%	7%	#DIV/0!	117.84	52.75	0.37	11.30	1.72	0.67	1.49	0.15	4.37	0.72
UBC	294.23	0.64	412.72	951.09	43%	11%	22%	5%	126.70	77.67	0.26	12.25	5.20	0.75	1.32	0.12	3.95	0.69
UCFV	33.94	0.12	146.59	393.74	37%	8%	15%	4%	245.54	21.97	0.65	17.92	2.52	1.00	0.59	0.03	6.94	0.96
UNBC	99.16	0.31	466.04	974.80	48%	17%	24%	5%	94.83	26.44	0.27	36.86	1.92	0.64	1.99	0.17	2.98	0.61
UVIC	282.79	0.46	388.63	923.41	42%	31%	0%	6%	95.93	30.46	0.11	30.31	2.45	0.59	1.34	0.10	0.55	0.99
VCC	16.74	0.06	49.65	382.78	13%	2%	3%	3%	196.30	19.02	1.14	20.13	4.59	0.56	0.35	0.04	3.58	0.95

CPSLD LIBRARY SURVEY 2005-2006 EXPLANATORY NOTES

Library	Notes
CAM	3.c. Faculty FTE is estimated. 10.a. This includes all the OPACs and all the Learning Commons work stations together.
CAP	5 (a) Includes docs and technical reports. 5 (h) Includes print titles with links to e-texts, e-journals, and websites. 10: Computing Infrastructure: Numbers in this section are for the North Vancouver Campus only. Sunshine Coast Campus has 8 library workstations and Squamish has 5. Only the North Vancouver campus has wireless, laptops or ports.
CNC	Facilities and Hours: only main campus listed, other campuses have varying schedules, staffing (managed by the campus)
ECIAD	ECI's large collection of slides skews both the collection and circulation statistics.
JI	We provide library services to more than 40,000 field professionals (e.g. police officers, fire fighters, etc. in B.C.). At an annual charge back of \$74,000, which is included in this report in our Library Operating expenses. Activity (reference, circulation) generated by this service is also included in this report.
KW	re: (3l) the fee for Community Borrowers is \$15 per 4 months; start date is the day the card is issued. re: (5a) includes maps re: (5d) slides only re: (6b+6c): includes for-credit library instruction re: (11) other sources of bibliographic records include Outlook, U of California, U of Alberta, Ohio Link, Amicus, OCLC, SFU, VPL
MAL	6L NetLibrary shared with COPPUL 9C The library Commons is open at least two hours a day more than the library for 89 hours/week 10C and 10D handled by equipment loans 10E two wireless networks with ten routers
NI	Personnel costs do not include benefits which are charged to an institutional budget. Benefits for library staff total 89,827.00. Total personnel costs are 558194.00
NW	The counts on USE 6a-f are only for the Terrace campus library.
OC	FTE audited includes International.
RR	4 a. Dana McFarland was on secondment for the year, and was not properly replaced 5 a etc : Our reports are broken, so our collection numbers and circ numbers are, at best, estimates. We have not submitted a circulation count because we have no faith in the number. 6 e. This stat has not been consistently kept this year, so is very likely too low.

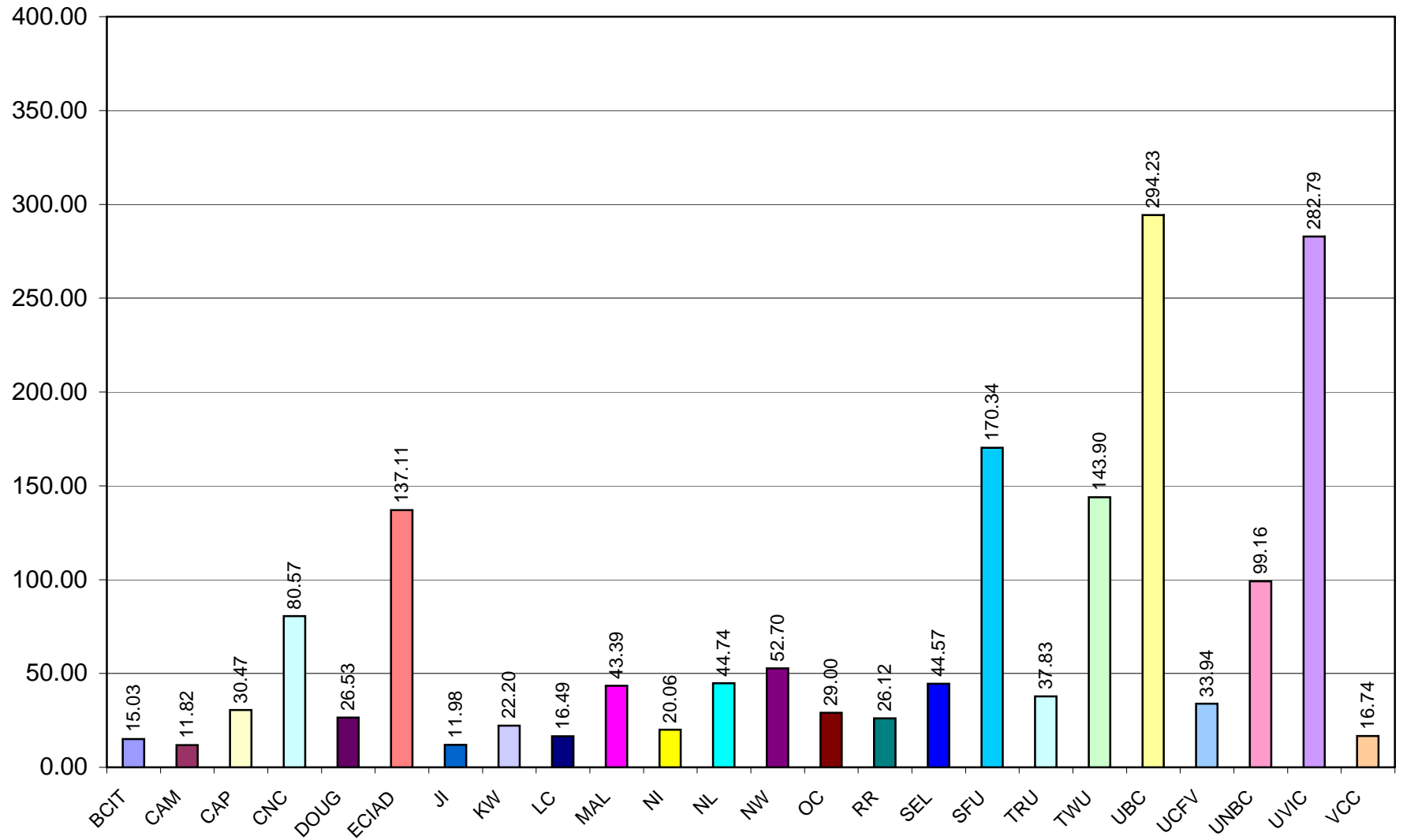
CPSLD LIBRARY SURVEY 2005-2006 EXPLANATORY NOTES

Library	Notes
SEL	<p>3c FTE Faculty: Estimated. 5e Back Issues Periodicals: Estimated. 6a Reference Transactions: Estimated. 6f Gate Count: Castlegar campus only. 9 Facilities and Hours: Silver King and Tenth St. campuses in Nelson have a combined library/bookshop. Staff person worked approx. half time at each campus. Complex reference questions are referred to Librarians at Castlegar. 10b Wireless access is unsecured.</p>
SFU	<p>5.a Includes Statistics Canada documents, maps and micromaterials. 5.a Excludes linear meters of manuscripts and archives. 5.c Includes digital collections. 5.d Includes slides, orthophotos, aerial photos, digital maps and digital collections.</p>
TRU	<p>Staff and budget figures reflect the addition of the Burnaby/OL Library. Special envelope includes \$287519 from library fund-raising campaign, and \$54,828 transferred from Burnaby library to Kamloops library. And additional 1170 fte International students are not included in the Ministry's count. Monographs budget includes a-v materials.</p>
UBC	<p>General: excludes reading rooms, affiliated libraries. 3k. FTE faculty: full time faculty, excludes deans, excludes part time faculty. 5a. Collections - monographs, microforms, maps; excl. e-books. 5d. Other visual formats excl. maps (counted in monographs). 5g. Periodicals: excludes electronic journals, e-databases. 5h. Electronic titles: incl. e-databases, cd/dvd-rom's, e-books, e-journals, numeric databases (files), ebooks. 6b and c. Orientations excludes WebCT. 6d. Circulation includes renewals, excl. in-house use. 7a. Personnel salaries: includes fringe benefits (all), includes UBCO and shared funding. 7i. Total library budget: includes fringe benefits. 8a. Includes UBCO. 8c. Includes UBCO. 8c does not include special purpose, research, ancillary, endowments if included total would be 1,593,663,000.</p>
UCFV	<p>7(c): Audio visual materials are also purchased from monographs budget 10(b): Wireless at Abbotsford campus only</p>
UVIC	<p>Note 3k: Includes 760 regular Faculty and 23 non-regular Faculty (FTE Faculty no longer calculated by University) Note 5a: Includes 1,913,726 volumes, 2,241,125 microforms, 36,042 scores, 199,482 maps. Note 5f: Excludes 1,175 linear metres Manuscripts & Archives. Note 5h: Excludes 20,370 electronic titles included in aggregator packages. Note 6e: Main Library in-house use, does not include Law Library. Note 6f: Main Library gate count, does not include Law Library. Note 6i: Statistics reported incorrectly for ILL (received) for 05/06 and 04/05. Note 7a: Benefits are charged against a separate budget and not included here. Note 7d: Includes all current periodicals, including electronic. Note 9b: Total seating reduced temporarily due to library expansion. Note 9d: Includes 72hrs/week (reference desk) and 18hrs/week (virtual reference). Note 10d: Laptop lending implemented in Sept. 2006.</p>

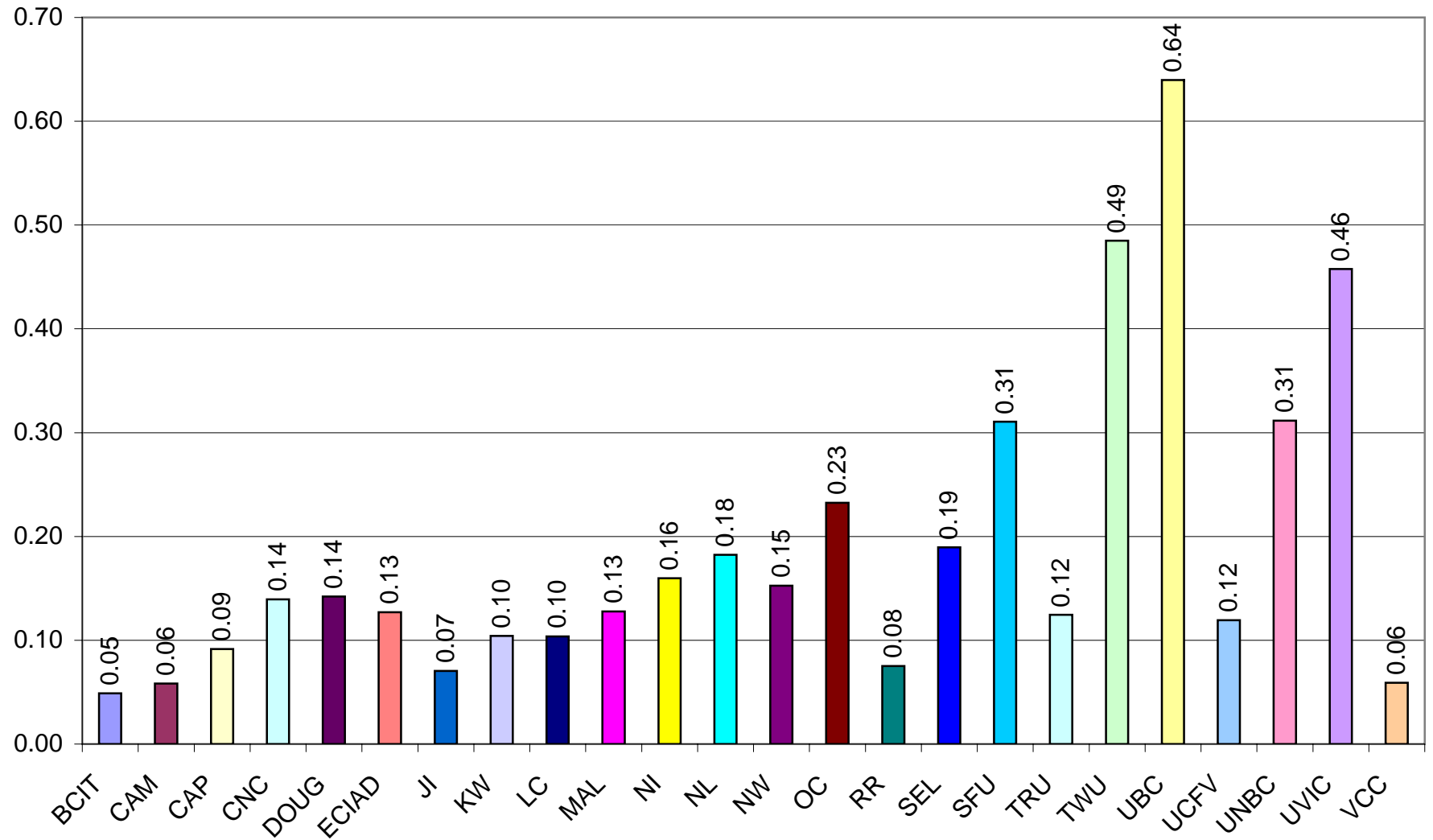
**CPSLD LIBRARY SURVEY 2005-2006
EXPLANATORY NOTES**

Library	Notes
	<p>Seats BWY (Broadway Campus) this does not include the seats that are in the Learning Centre Section of the Learning Commons or in the Learning Centre classroom at the Broadway Campus Library. There are 12 OPACs, 18 Computer Workstations and 44 A/V Station seats in this area.</p> <p>Area BWY (Broadway Campus) this includes the area that is in the Learning Centre as the Library and Learning Centre have been amalgamated at this campus.</p>
VCC	Seats DTN (Downtown Campus) this does not include the 12 A/V/PCs seats and 10 OPACS seats.

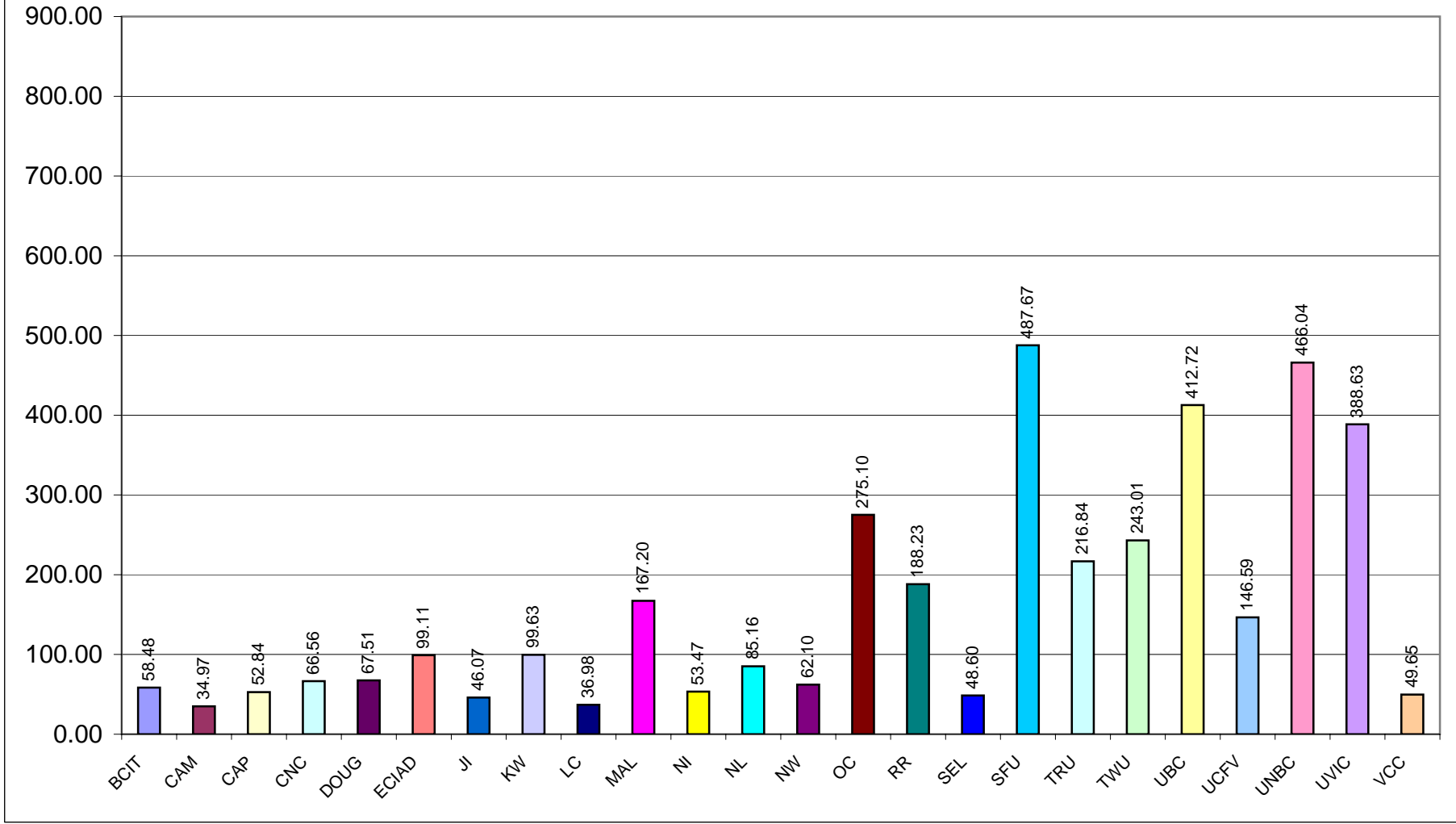
a) Volumes/FTE Student: 5(f)/3(f)



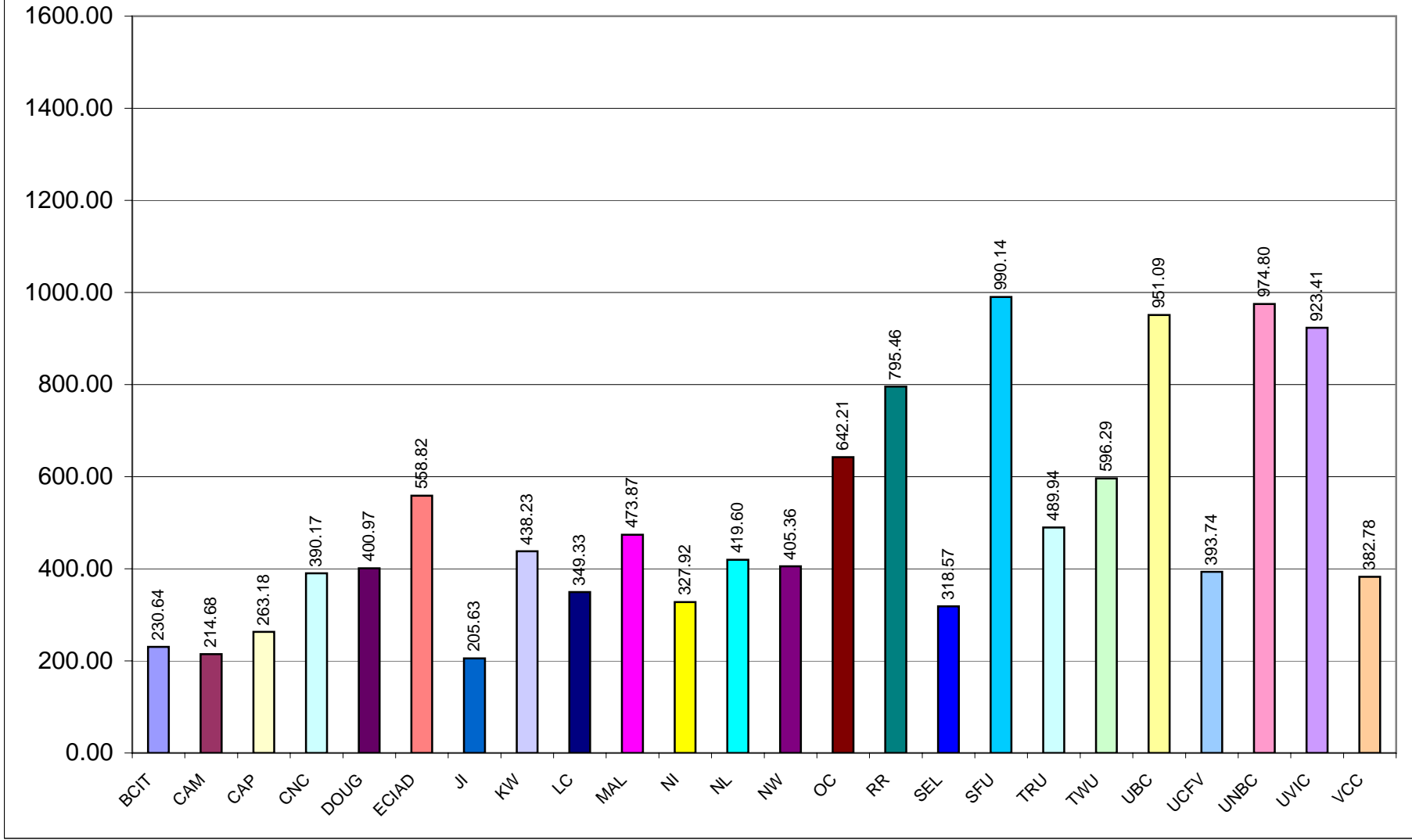
b) Subscriptions/FTE Student: 5(g)/3(f)



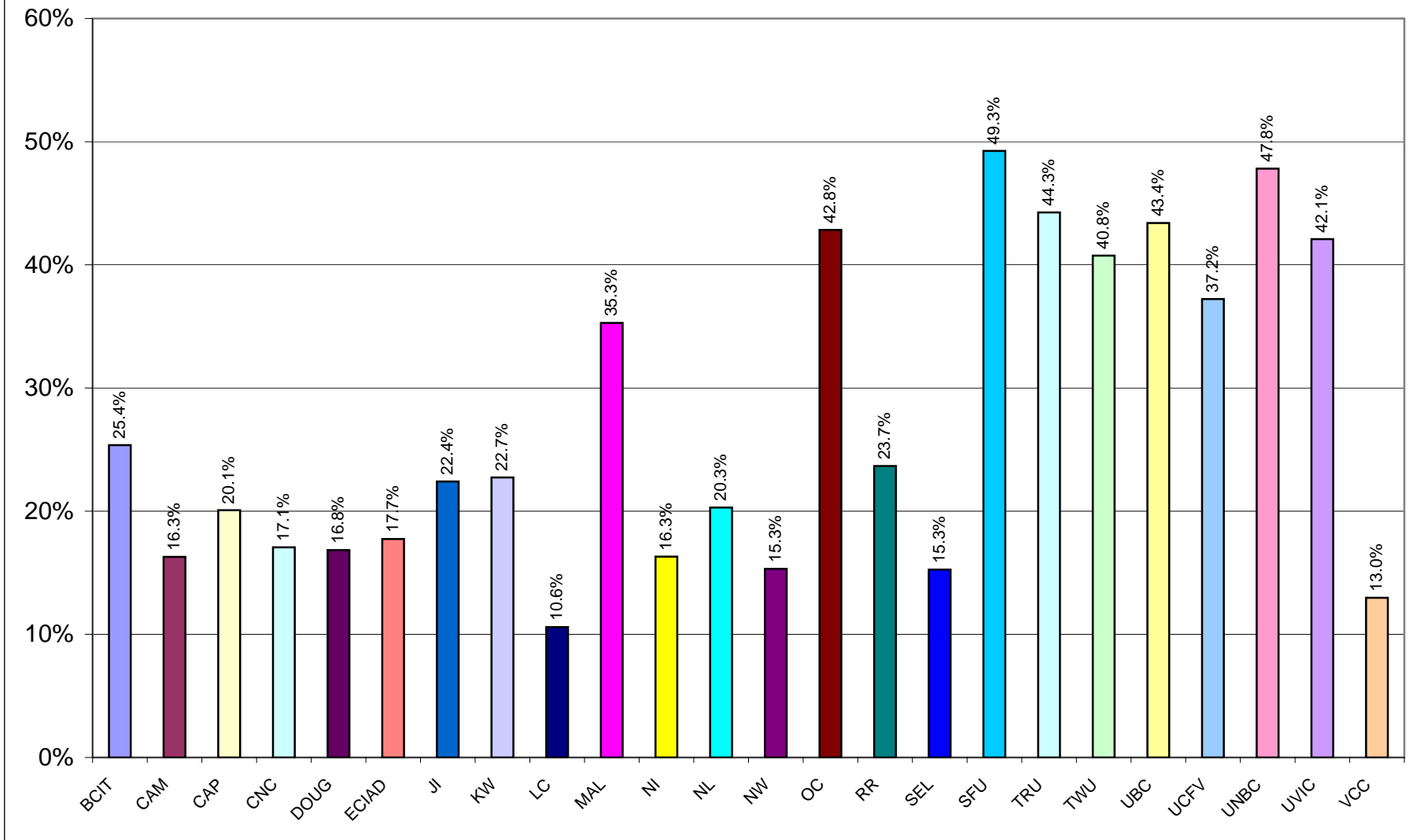
c) Collection Budget/FTE Student: 7(j)/3(f)



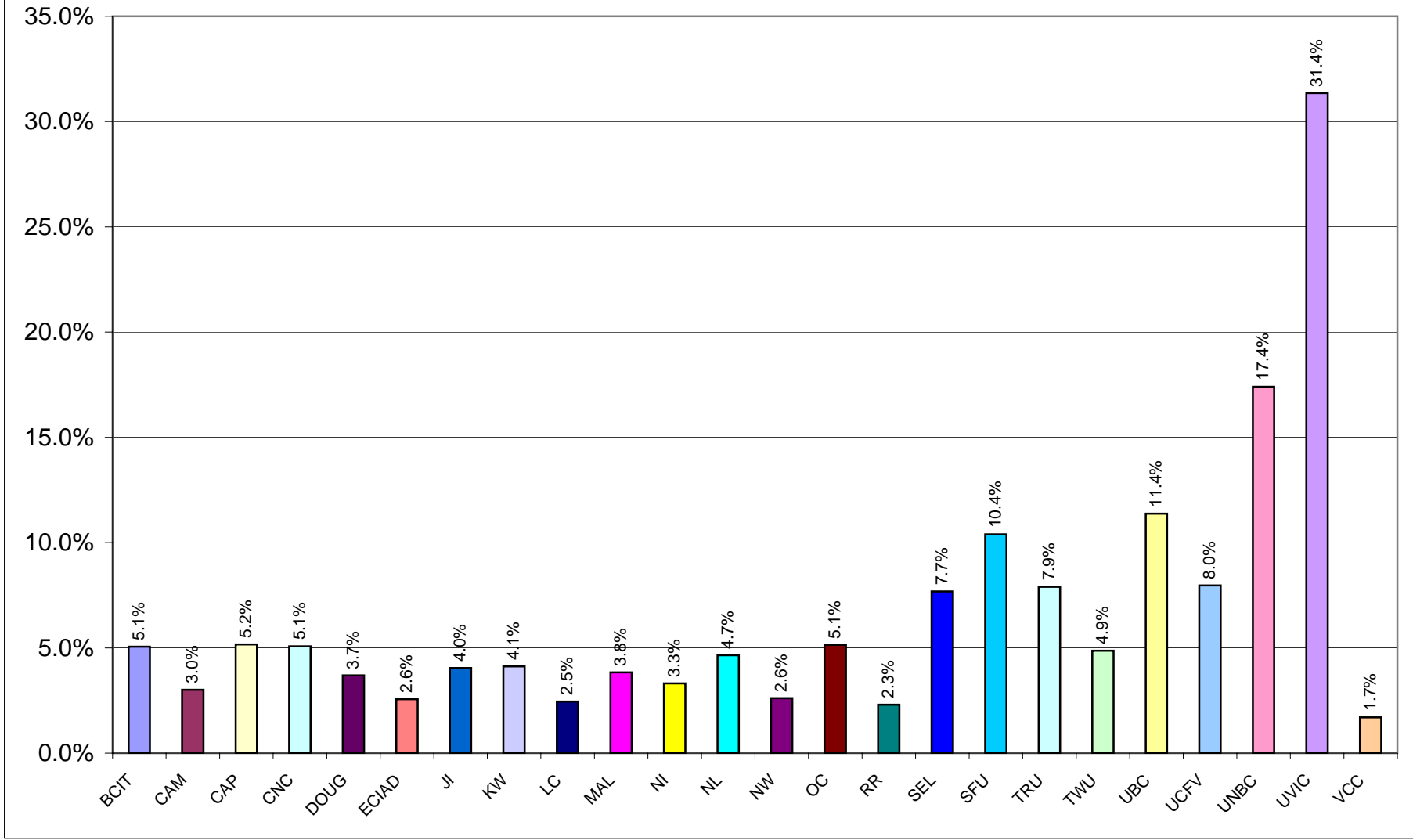
d) Library Budget/ Student: 7(l)/3(f)



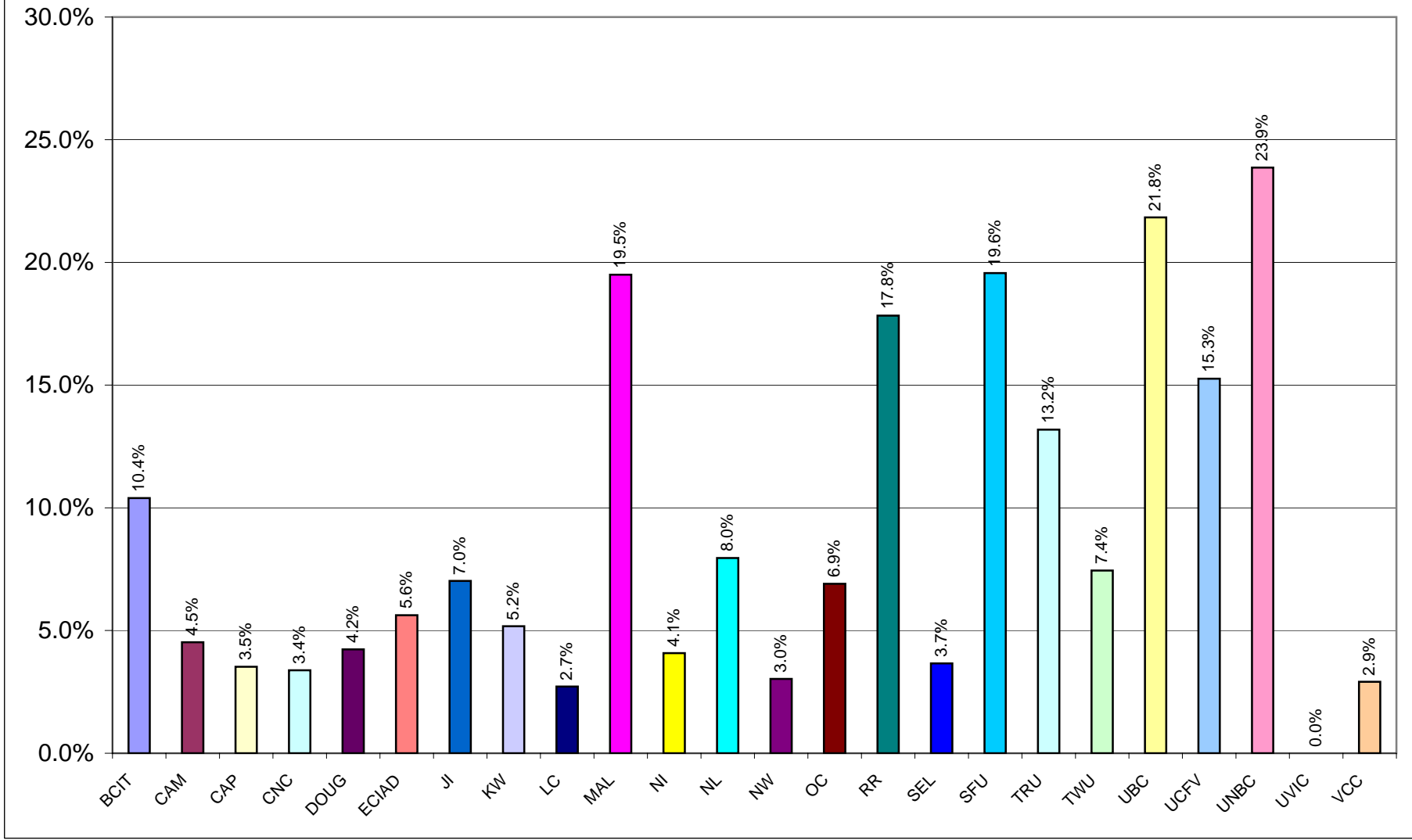
e) Collection Budget as % of Library Budget: 7(j)/7(I)



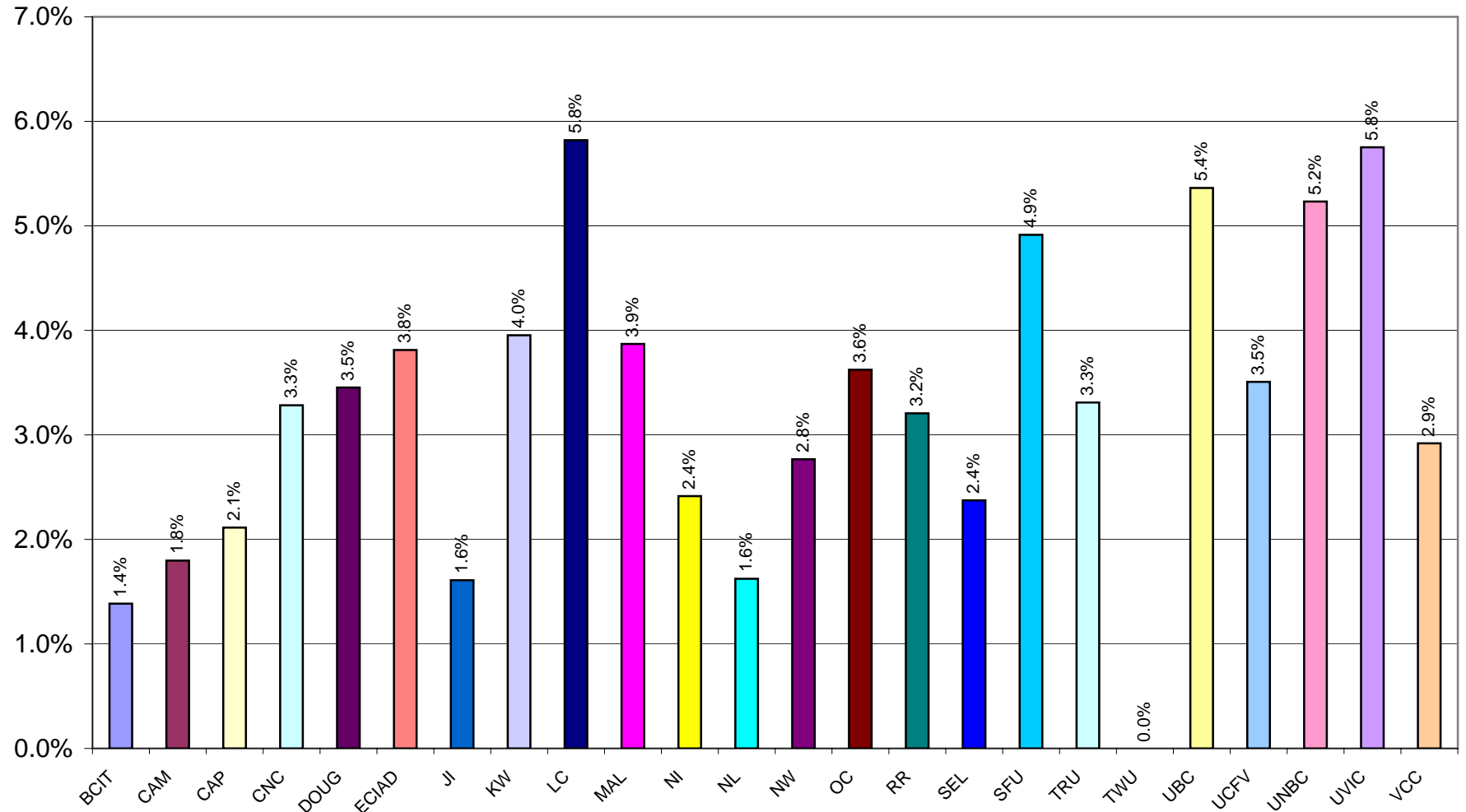
f) Periodicals as % of Library Budget: 7(d)/7(l)



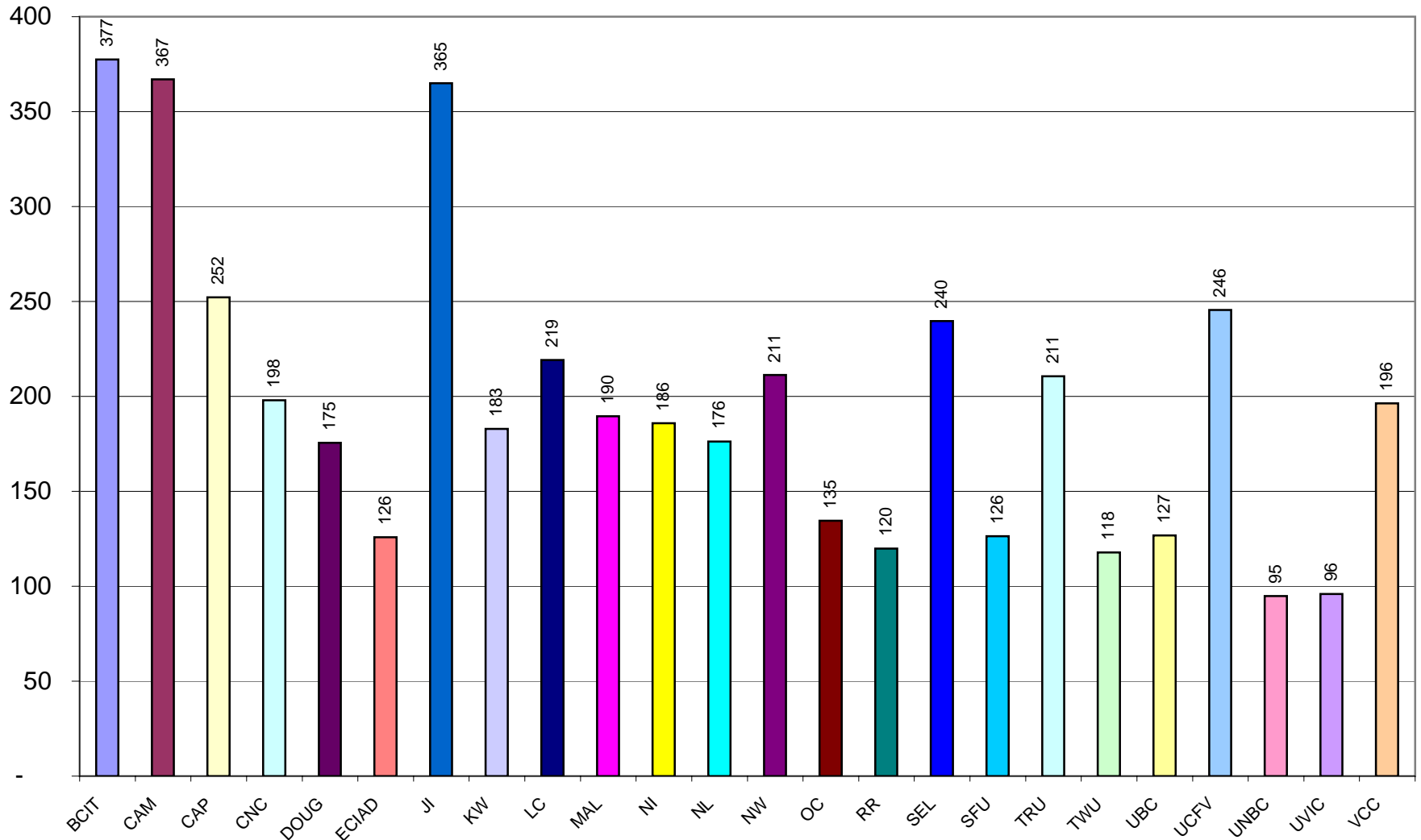
g) Electronic Services as % of Library Budget: 7(i)/7(l)



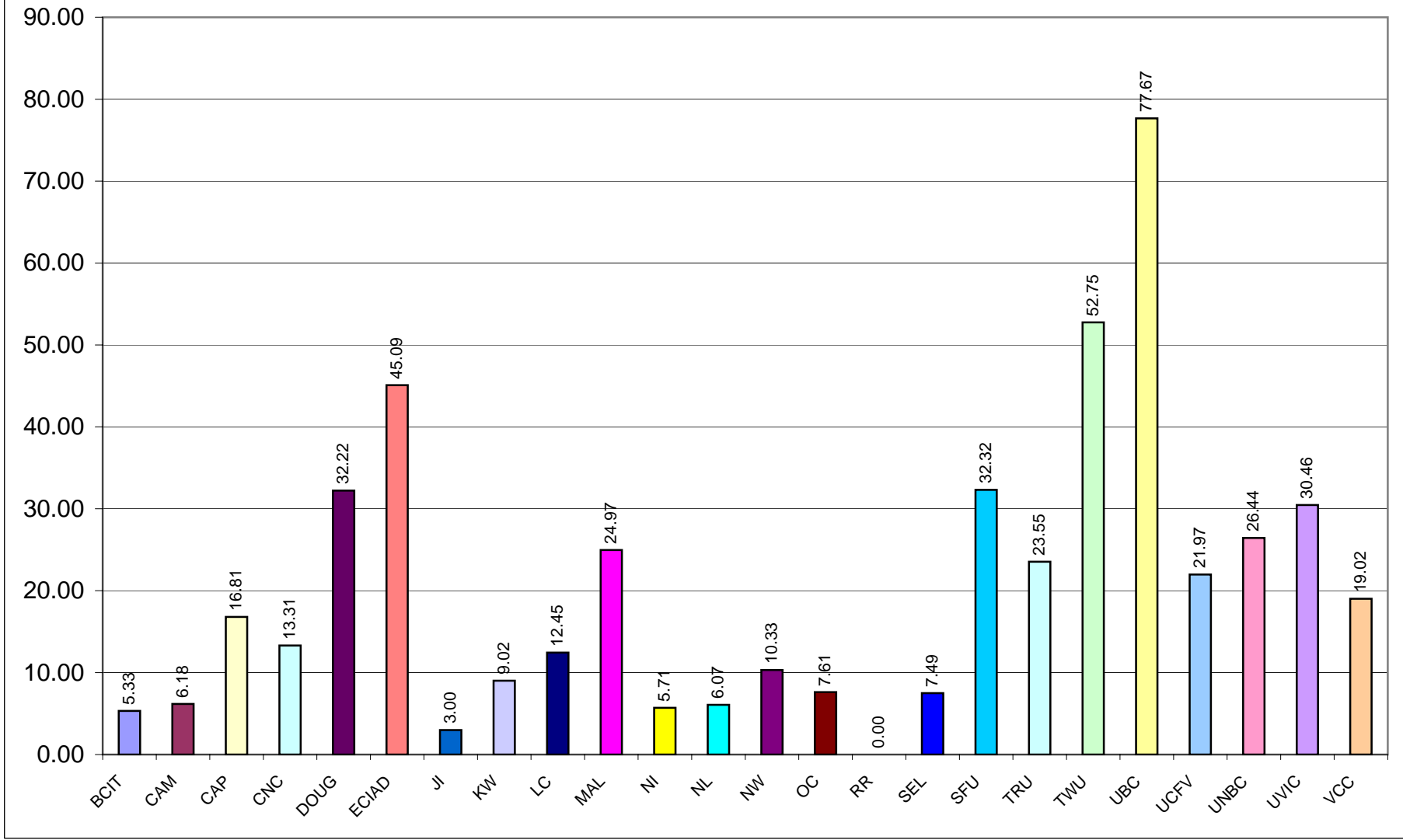
h) Library Budget as % of Institutional Budget 7(I)/8(c)



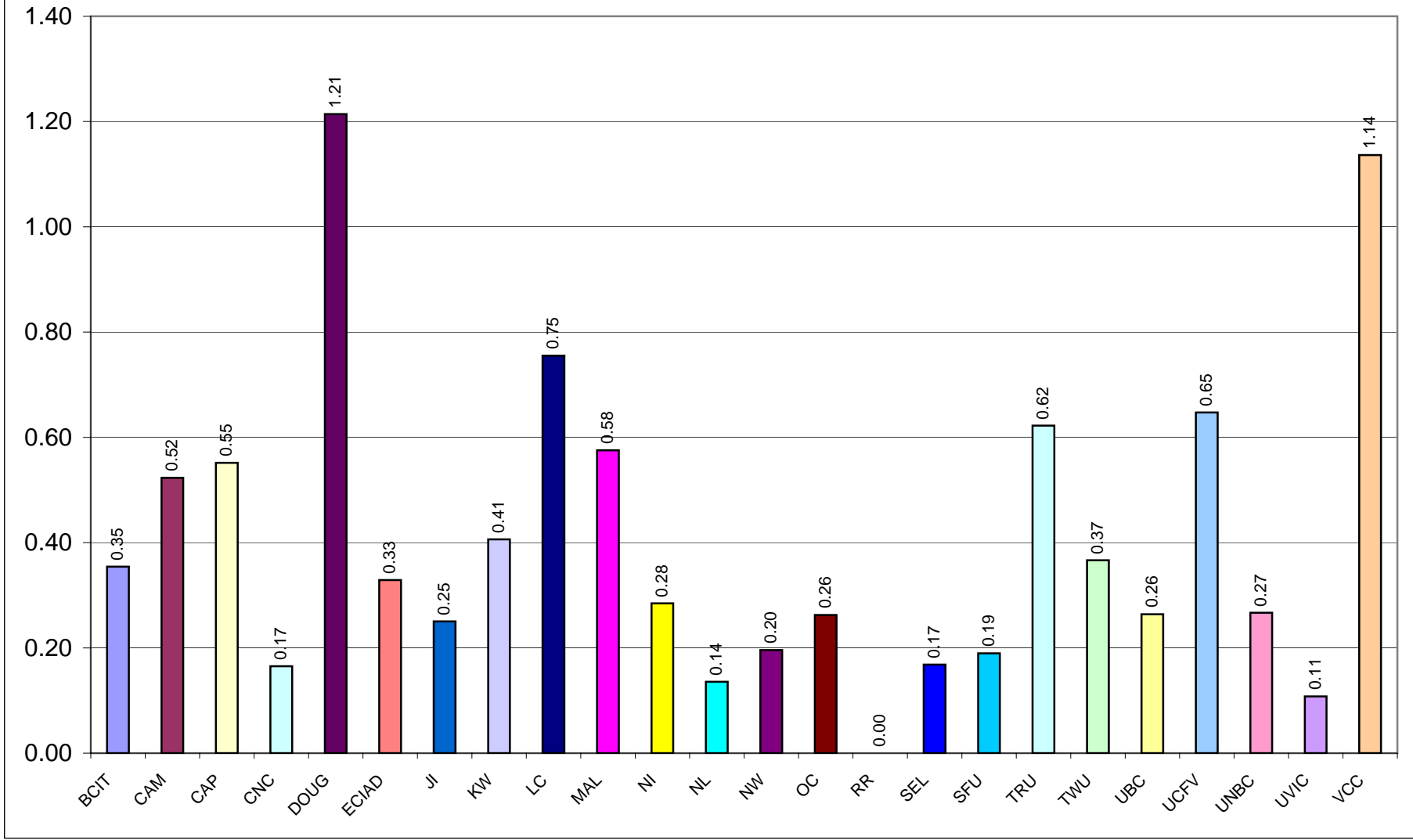
i) FTE Students/FTE Library Personnel: 3(f)/4(e)



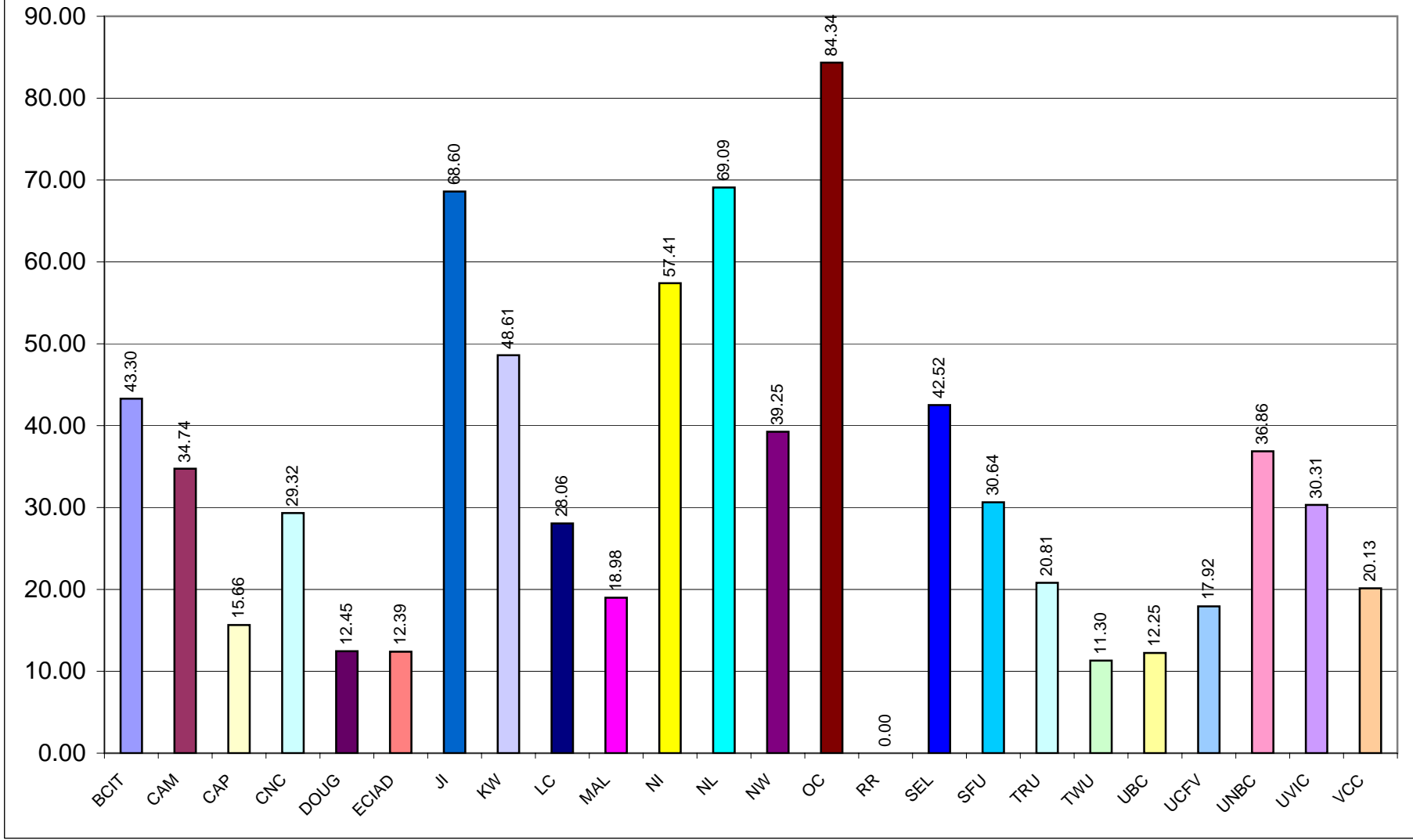
j) Direct Circulation/FTE Student: 6(d)/3(f)



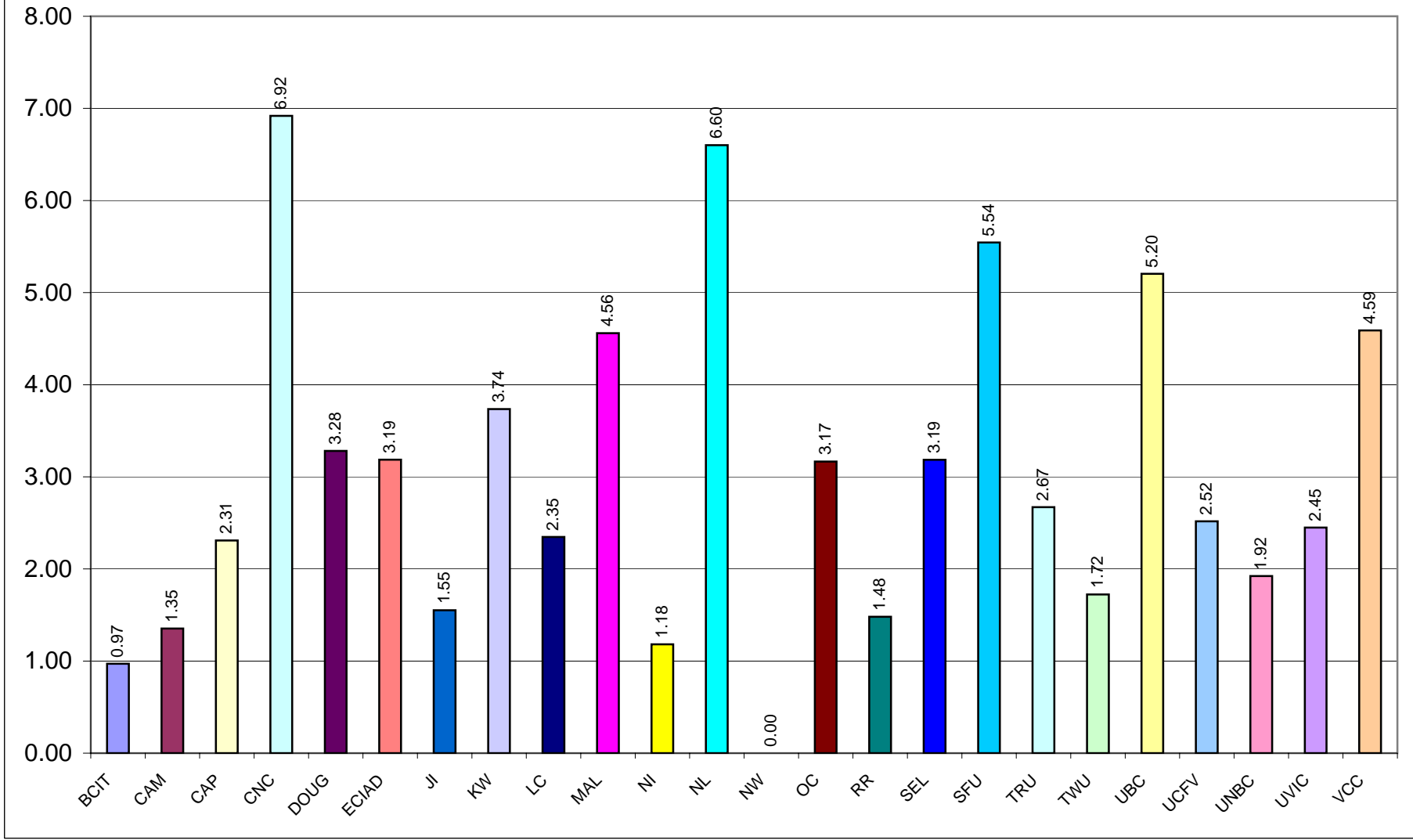
k) Direct Circulation/Total Volumes: 6(d)/5(f)



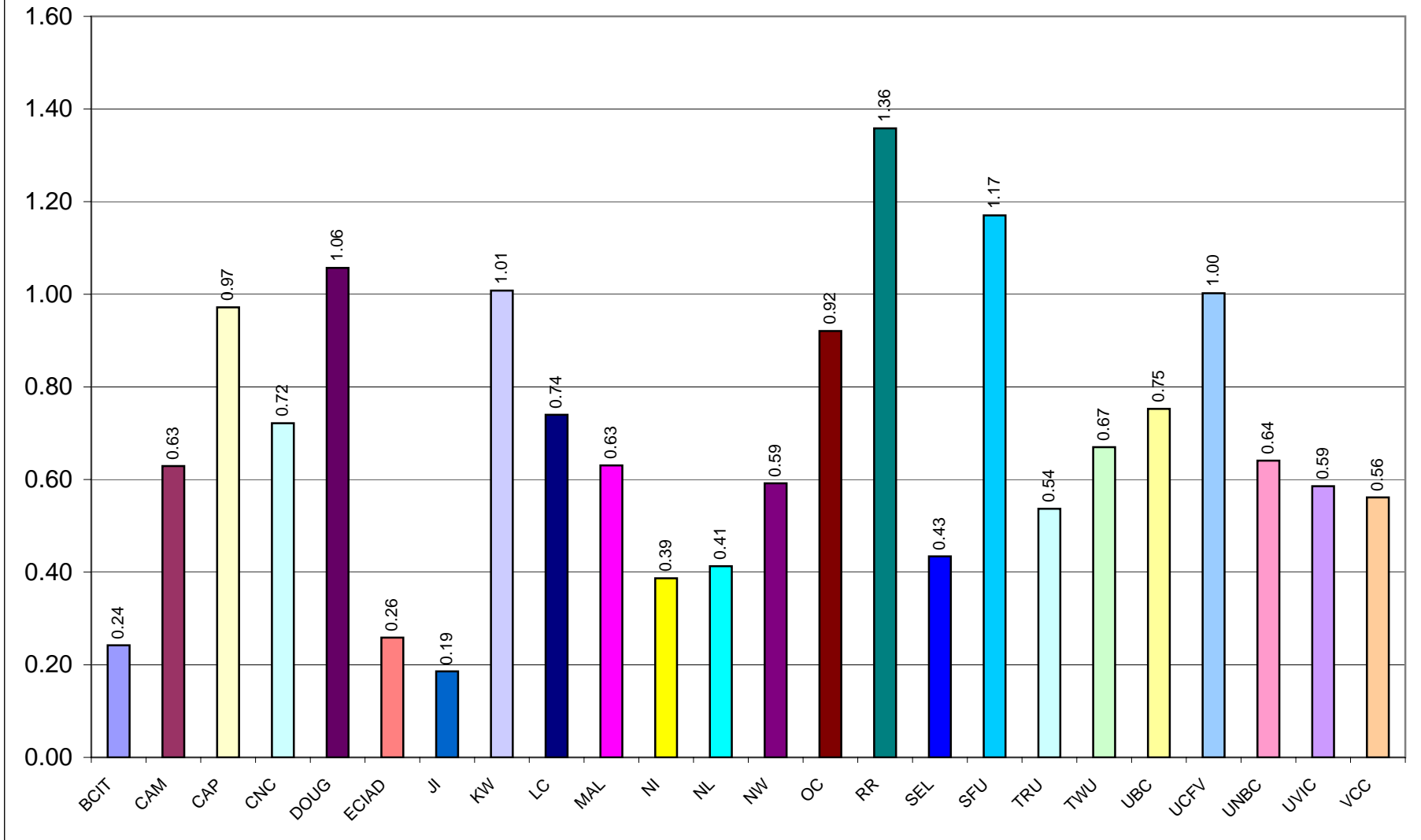
I) Total Library Budget/Circulation: 7(l)/6(d)



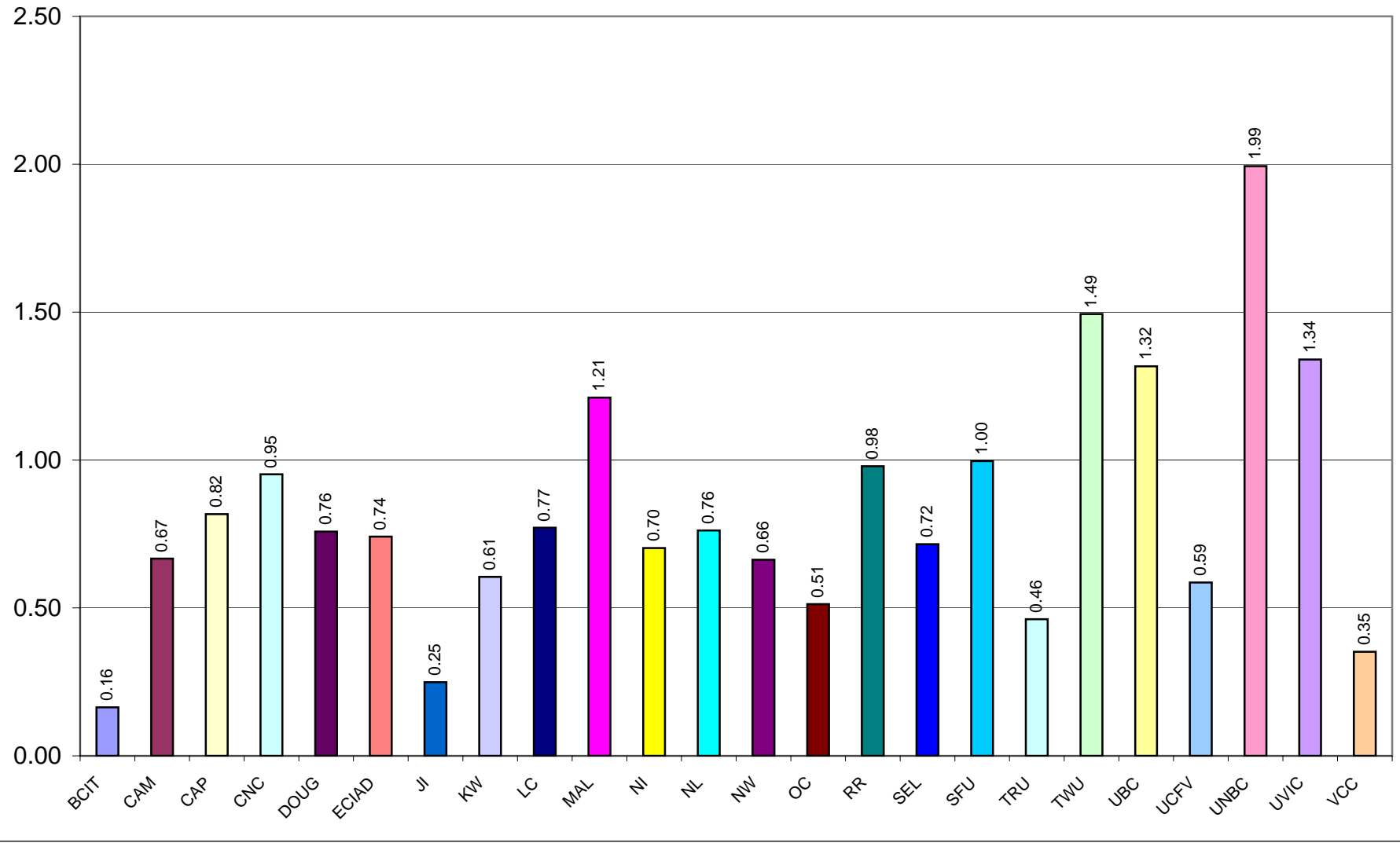
m) Reference Transactions/FTE Student: 6(a)/3(f)



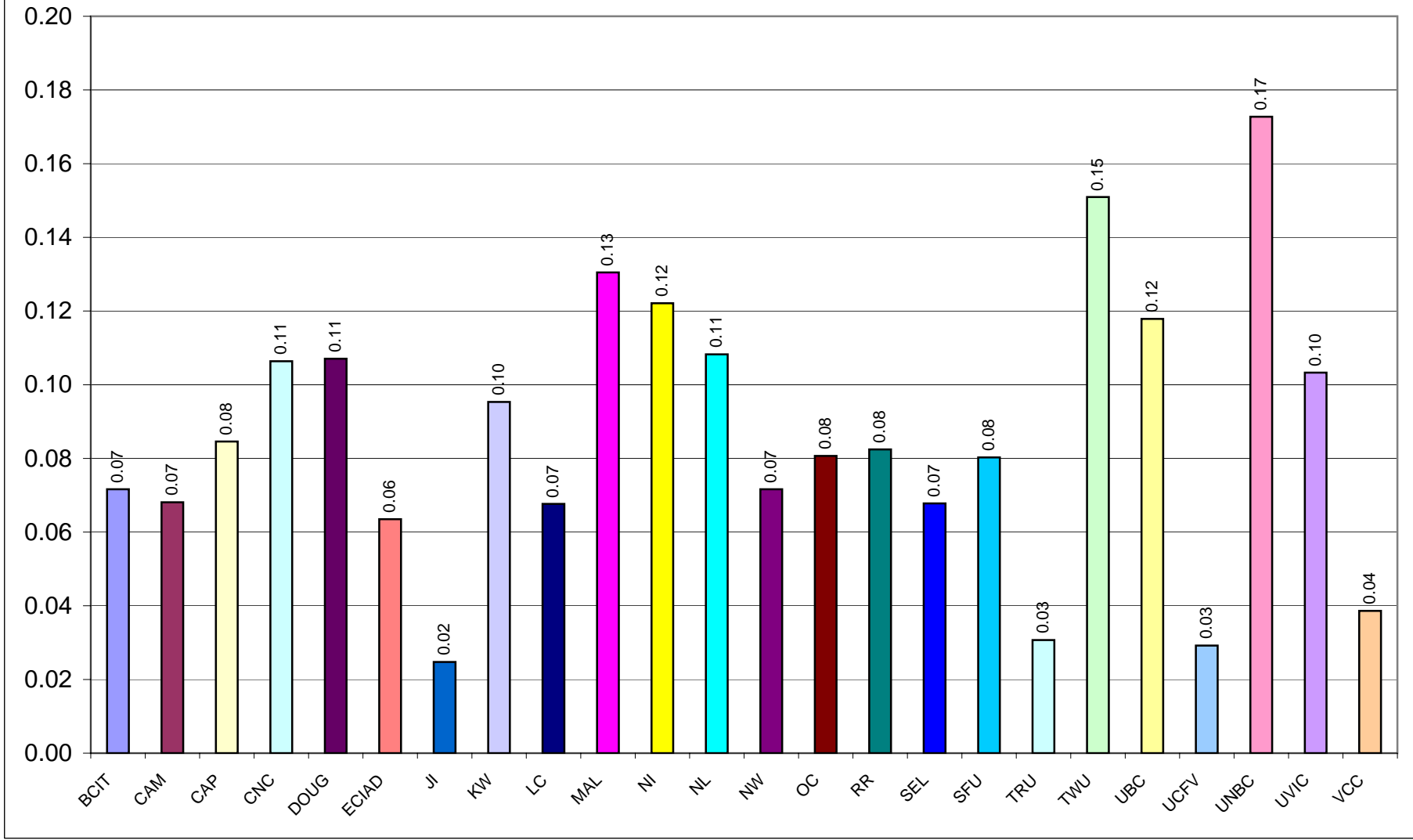
n) Number of Students Instructed/FTE Students: 6(b)/3(f)



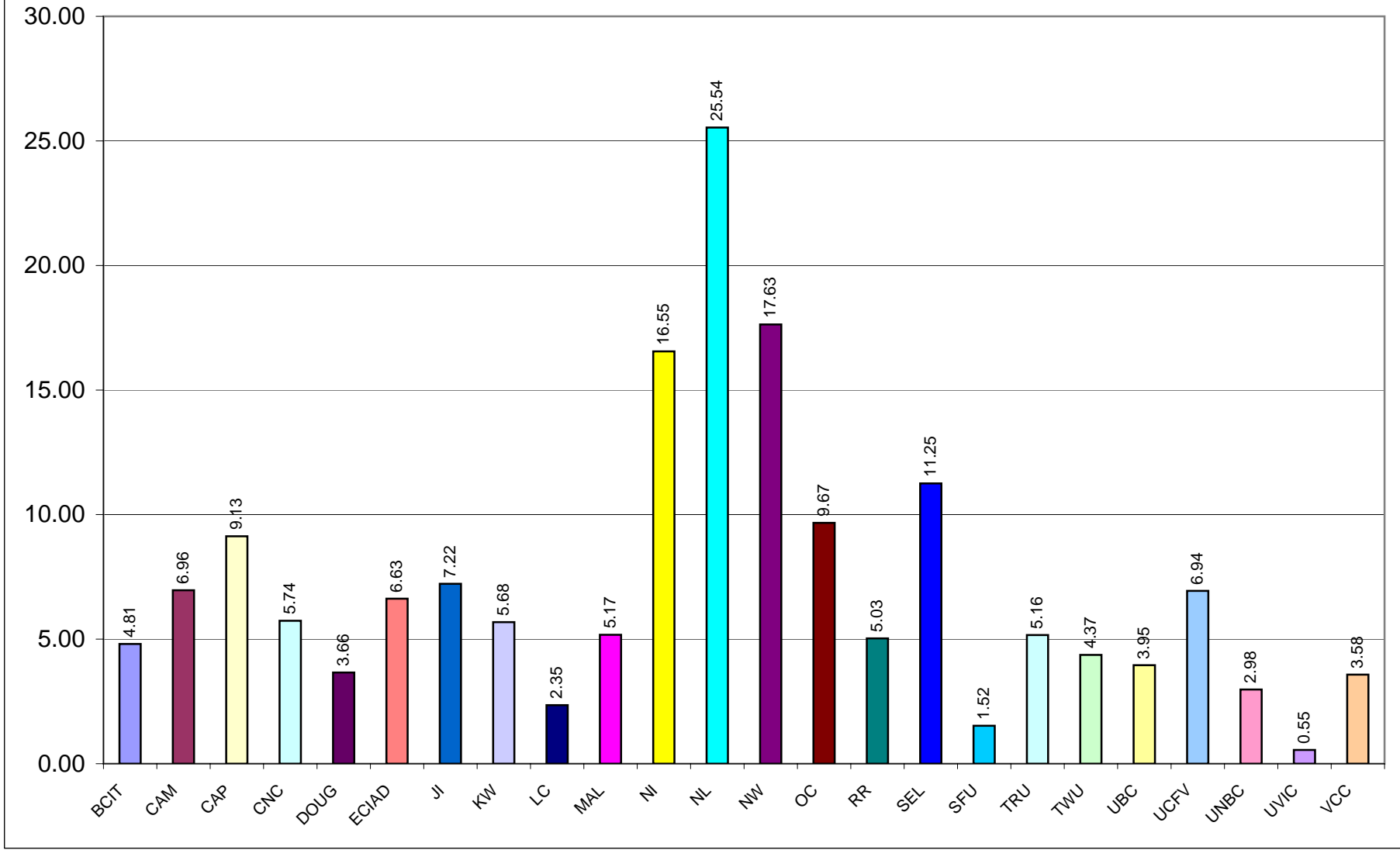
o) Total Library Area/FTE Students: 9(e) total /3(f)



p) Number of Seats/FTE Student: 9(f) total /3(f)



q) Hours Open/FTE Personnel: 9(g) total / 4(e)



r) Reference Hours/Total Open Hours: 9(h) total / 9(g)

