

# **CPSLD Statistics Report**

---

## **2007 - 2008**

Created by:  
Vancouver Community College  
Library and Learning Resources

## **ACKNOWLEDGEMENTS**

On behalf of CPSLD members, I would like to thank my assistant, Corinna Luk. For her help and expertise in completing this report.

I would also like to acknowledge the help of Stephanie Leskiw  
Coordinator, PSI Funding, Funding and Analysis Branch, Ministry of Advanced  
Education who provided us with FTE statistics

Lila Heilbrunn  
Director, Library and Learning Resources  
Vancouver Community College  
CPSLD Statistics Compiler, 2008

CPSLD STATISTICS REPORT  
2007/2008

COUNCIL OF POST-SECONDARY LIBRARY DIRECTORS OF B.C.  
LIBRARY/LEARNING RESOURCES CENTRE SURVEY

DEFINITIONS	PAGE 1 to 7
SURVEY	PAGE 1 to 4
LEGEND	PAGE 1
DATA	PAGE 23
RATIOS	PAGE 24
NOTES	PAGE 25
GRAPHS	PAGE 26 to 43

# COUNCIL OF POST-SECONDARY LIBRARY DIRECTORS B.C. LIBRARY/LEARNING RESOURCE CENTRE SURVEY

## DEFINITIONS ( Rev.2 May 1, '08)

### **INTRODUCTION**

This annual statistical survey is intended to provide a picture of the holdings and activities of Libraries in colleges, university/colleges, institutes, and universities of British Columbia for the fiscal year (**April 1 - March 31**). All information is based on the total count for one year.

The following activity, although under library jurisdiction in many institutions, is **excluded** from this report:

- audio-visual equipment distribution to classrooms
- audio-visual equipment maintenance
- Media production or instructional media services.

### **A word of caution:**

Comparison among institutions should be made with the understanding that each library operates somewhat differently and counts activities within a context unique to the institution. In addition, as access to electronic information becomes more important, holdings information is not always readily quantifiable or entirely meaningful and expenditure information is not found within the same budget categories in each institutional library.

**Note: Do not add text into any field that will be totalled automatically** as this will prevent the system from performing this addition.

**Note:** use the "Explanatory Notes" section at the bottom of the survey to provide additional information or any variations from the norm.

### **1. TYPE OF LIBRARY**

Self explanatory.

### **2. NUMBER OF CAMPUSES**

Differentiate between those centres which have library staffing from those which are characterized as reading rooms and/or learning centres which have no staff or may have staff paid for by other parts of the institution.

- a. Number of campuses **with** library staff
- b. Number of campuses **without** library staff

### **3. USERS**

**FTE students:**

**NOTE – for sections a - f, this data will be completed for you based on data supplied by the Ministry of Advanced Education**

**g.FTE faculty:**

- Provide FTE (not head count) of faculty employees (include librarians if applicable); approximate if actual number is not available;

**Community Borrower Fee:**

- Do not include the number of community borrowers as this figure does not represent active users for many institutions; provide only the annual fee if applicable.

**h. Is there a community borrowers fee?**

**i. Fee \$**

**4. LIBRARY PERSONNEL**

- Count all personnel in FTE terms (not head-counts);

**a. FTE librarians:**

- include all part-time and contract librarian hours;
- include Library Director whether this is an administrative position or not;
- include any positions funded by special grants or university-college access funds;

**b. FTE library staff:**

- exclude personnel who are entirely devoted to AV equipment and media production/IMS activities;

**c. FTE other professionals**

- **Include staff who are not librarians in the strict sense of the terms such as computer experts, systems analysts or budget officers.**

**d. Subtotal – FTE Library Personnel: (system will total automatically)**

- provide subtotal of personnel before counting student aides and work-study employees;

**e. FTE student aides:**

- include student aides and work-study employees

**f. Total FTE Library Personnel: (system will total automatically)**

**5. COLLECTIONS**

- **Volumes:** items that are barcoded separately or intended to be circulated as one unit, (e.g. a 20-volume set of encyclopedias = 20 units, 2 CDs plus booklet in one package = 1 unit; book plus CD = 1 unit; set of slides in a binder or a folio = 1 unit).

**a. Monographs:**

- a volume is a physical unit of any printed or processed work contained in one binding, encasement or other clear distinction, which has been catalogued as part of the collection and given an individual barcode;
- **include** titles in microform or CD (not individual cards of fiche except when 1 card = 1 title);
- **include** annuals;
- **exclude** periodicals;
- use explanatory notes for any unusual inclusions (e.g. documents, technical reports, individually catalogued maps).

**b. Videos & Films:**

- count all video & film formats;
- count physical items (e.g. 2 film reels = 2 units, series of 24 videos = 24 units);

**c. Other Audio formats:**

- count all sound recordings (e.g. LP records, cassette tapes, compact disks);
- count items intended to be used together as one unit (e.g. opera on 2 CDs = 1 unit);
- if two or more media are included (e.g. print and cassette tape), count as a single unit all items to be used in conjunction with each other.

**d. Other Visual formats:**

- count all visual formats (e.g. slides, snapshots)
- do not count individual slides unless they do not form part of a set (i.e. 1 slide set = 1 unit);
- if two or more media are included (e.g. print & slides), count as a single unit all items meant to be used in conjunction with each other.

**e. Back Issues Periodicals:**

- **include** journals, magazines, and newspapers received in print, microform, or CD formats;
- count volumes if they are known, otherwise 1 year = 1 volume;
- **include** annual index volumes.

**f. Total Volumes in Library Collection: (system will total automatically)**

- add  $a + b + c + d + e = f$

**Periodicals:**

**g. Total Current Print Subscriptions:**

- count titles of journals, magazines, and newspapers currently received in print, microform, or CD formats (e.g. Canadian Newdisc = 8 titles);
- **exclude** annuals (counted in **a**) above);
- **include** gift subscriptions and those being received on exchange;
- **include** departmental subscriptions only if they are accessible to the college community (i.e. listed in library catalogue and available for use);
- count duplicate subscriptions (i.e. if the library subscribes to two copies of a title count 2);
- **include** Statistics Canada periodicals if they are treated like a periodical;
- **exclude** subscriptions to electronic periodical indexes and abstracts (expenditures information only required in **7.** below).

**Electronic Titles**

**h. Catalogued Electronic Titles**

- **Include** all purchased e-books, NetLibrary, e-journal titles purchased independently (i.e. not included in database subscriptions) and free catalogued websites, e-texts and e-journals
- use explanatory notes for any unusual inclusions (*confusion re classed serials counted as monographs or serials*)

## 6. USE

### a. Reference transactions:

*An information contact that involves the knowledge, use, recommendations, interpretation or instruction in the use of one or more information sources by a member of the library staff. Information sources include printed and non-printed materials, machine-readable databases (including computer-assisted instruction), catalogues and other holdings, records and, through communication or referral, other libraries and institution, and persons both inside and outside the library. Include information and referral services. If a contact includes both reference and directional services, it should be reported as one reference transaction. When a staff member utilizes information gained from a previous use of information sources to answer a question, report as a reference transaction, even if the source is not consulted again during this transaction. Duration should not be an element in determining whether a transaction is a reference transaction. Sampling of a typical week may be used to extrapolate for a full year) CARL definition.*

- count all questions handled (i.e. regular, and extended reference questions);
- **include** questions associated with electronic searching;
- **include** electronic reference questions
- **include** real-time-reference interactions (i.e. virtual reference)
- **exclude** questions associated specifically with a bibliographic instruction class.
- Exclude directional questions as these will be counted separately

This is the way this question will appear on the stats collection form

- 6a (i) Reference questions
- 6a (ii) Directional questions
- 6a (iii) Total

### Library Instruction

### b. Number of participants at group presentations:

- Report total number of participants in the presentations - count all students receiving bibliographic instruction whether in tutorial groups, tours, or library skills classes
- Personal one-on-one instruction in the use of sources should be counted as a reference transaction

### c. Presentations to groups

- **Number of presentations to groups** - Report the total number of library instruction sessions during the year. Count sessions presented as part of formal bibliographic instruction programs including class presentations, orientation sessions and tours. If the library sponsors multi-session credit courses that meet several times over the course of a semester, each session should be counted. Presentations both on and off the premises should be included when they are sponsored by the library. If you are using sampling, please include a footnote
- **include** internet research or database searching classes;
- **include** classes taught to faculty and other employee groups.

**Circulation:**

**d. Direct:**

- count all items which are charged out for use, whether the use is inside (e.g. reserve) or outside the library;
- **include** self/online renewals
- **exclude** items charged out to other libraries on interlibrary loan (included in **g**) below).

**e. In-library use:**

- count those items being used in the library and re-shelved by library employees, but that have not been charged out for use in the direct circulation transaction.

**f. Gate Count**

- Count all traffic upon exit from the library (usually provided via an electric eye on the library security system)

**Interlibrary loan:**

- count all items actually received and sent via interlibrary loan;
- **include** items received or sent via any delivery method and from or to any type of library (including agencies with library holdings) in any part of the world;
- all NET, MEC, OJAC, and filesaver project figures are supplied by the ELN office;
- **exclude** intercampus loans within your institution.

**g. Interlibrary loans received** (include all formats)

**h. Interlibrary loans sent** (include all formats)

**7. LIBRARY EXPENSES (capital & operating)**

For purposes of consistency “expenditures” means actual expenditures vs budgeted expenditures.

**a. Personnel (salaries & benefits):**

- count all salary & benefit expenditures for library personnel as listed in **4** above;
- **exclude** personnel not covered by this survey (e.g. AV equipment distribution, Media Production or IMS);
- **include** personnel working under special grant funding or university-college access funding.

**Collections:**

**b. Monographs:**

- count all expenditures on items listed as monographs in **5a** above;

**c. Audio-Visual:**

- count all expenditures on items listed in **5b +5c + 5d** above:

**d. Current Print Periodicals:**

- count all expenditures on current subscriptions to print periodicals and indexes as included in **5g** above.



**e. Special Funding Envelopes for Collections**

- **Include** all expenditures from special funding sources e.g. one time capital grants

**f. Subtotal Collections: (system will total automatically)**

- $b + c + d + e = f$

**Electronic Materials:**

**g. ELN services:**

- count all expenditures as a partner library to ELN subscription services.

**h. Non-ELN subscriptions:**

- count all expenditures on electronic subscription services (index, abstract, and full-text) that are not provided through the ELN service;
- **exclude** subscriptions which are included in **7d** above;
- **include** expenditures on databases (e.g. Wilson Indexes) if they are negotiated through your library and mounted on your local system.

**i. Subtotal Electronic Products (system will total automatically)**

- $g + h = i$

**j. Total Collections Budget: (system will total automatically)**

- $f + i = j$

**k. Other:**

- count all other library expenditures (i.e. those expenditures that are not related to personnel and collections);
- **include** only those other costs (e.g. printing, postage, interlibrary loans, mileage, conferences, supplies, etc.) if they are paid by the library's budget;
- use explanatory notes to indicate any variations from the norm.

**l. Total Library Budget: (system will total automatically)**

- ii.  $a + j + k$

**8. INSTITUTIONAL BUDGET**

- a. **base ministry grant** as outlined in the grant allocation sent by the ministry to each institution in March (usually) for the next fiscal year;

**b. Other operating funds**

- **include** all items that are considered in calculating your institution's operating budget;
- **exclude** institutional capital (i.e. new building funds, upgrading of present buildings, roads etc.)
- use explanatory notes to provide details on any exceptions or variations from the norm.
- 

**c. Total Institutional Budget: (system will total automatically)**

- $a + b$

**9. FACILITIES & HOURS (system will tally automatically for all sections)**

**e. Total library area in square meters**

- for each campus with library personnel provide library area in square meters ( to convert from square ft. to square meters multiply sq. ft. by .0929, e.g. 30,000 sq. ft. x .0929 = 2787 sq. meters);
- **include** space for books and other library materials, space for storage of AV equipment if control of this equipment is the library's responsibility, library classrooms, study stations, seminar and study rooms, and workspace for library personnel;
- **exclude** areas used solely for janitorial, custodial and mechanical storage or services, lobbies, vestibules, building corridors, and other general access areas;
- add figures for each library to provide total for **e**.

**f. Total number of seats:**

- for each campus with library personnel count all study spaces for library users;
- **exclude** seats in staff areas, offices, meeting rooms, and other areas not normally occupied by users of library materials;
- add figures for each library to provide total for **f**.

**g. Total hours open per week: (September – April)**

- for each campus with library personnel count total operating hours per week;
- add figures for each library to provide total for **g**.

**h. Total reference hours per week: (September – April)**

- for each campus with library personnel count total hours of reference service provided;
- add figures for each library to provide total for **h**.

**10. COMPUTING INFRASTRUCTURE**

- a. Number of public workstations
  - For each campus library, count all public workstations that have Internet access
- b. Wireless available in each library? Y/N (use notes for clarification)
- c. Number of laptops available for borrowing from library
- d. Number of times laptops circulated from library
- e. Number of laptop ports/docking stations available for each campus library
- f. Mobile devices other than laptops supported by library? Y/N if Y, please clarify

**11. LIBRARY AUTOMATED SYSTEMS**

- self explanatory;
- use explanatory notes for any variations.

# CPSLD Statistics 2007-2008

## LIBRARY/LEARNING RESOURCE CENTRE SURVEY

Fiscal Year: \_\_\_\_\_  
Name of Library: \_\_\_\_\_  
Name of Library Director: \_\_\_\_\_

see definitions

### 1. Type of Library:

College  Institute  University  University College

### 2. Number of Campuses

(a) with Library Staff: \_\_\_\_\_  
(b) without Library Staff: \_\_\_\_\_

### 3. USERS

NOTE - for sections a - f, this data will be completed for you based on data supplied by the Ministry of Advanced Education

(a) FTE AVED Ministry funded: \_\_\_\_\_  
(b) FTE students (audited): \_\_\_\_\_  
(c) ITA (Foundation + Apprenticeship) Funded: \_\_\_\_\_  
(d) ITA (Foundation + Apprenticeship) Actual: \_\_\_\_\_

**(e) Service Plan Total Funded (a + c) (auto calculated):** \_\_\_\_\_

**(f) Service Plan Total Actual (b+d) (auto calculated):** \_\_\_\_\_

(g) FTE faculty: \_\_\_\_\_

(h) Is there an annual fee for Community Borrowers?  Yes  No

(i) Fee \$: \_\_\_\_\_

### 4. LIBRARY PERSONNEL

(a) FTE Librarians (including Director): \_\_\_\_\_

(b) FTE Library Staff: \_\_\_\_\_

(c) FTE Other Professionals: \_\_\_\_\_

**(d) FTE Personnel (a+b+c) (auto calculated):** \_\_\_\_\_

(e) FTE Student Aides: \_\_\_\_\_

**(f) Total Personnel in FTE (d+e) (auto calculated)** \_\_\_\_\_

### 5. COLLECTIONS (see definitions)

(a) Monographs: \_\_\_\_\_

(b) Videos and Films: \_\_\_\_\_

(c) Other Audio Formats: \_\_\_\_\_

(d) Other Visual Formats: \_\_\_\_\_

(e) Back Issues Periodicals: \_\_\_\_\_

**(f) Total Collection (a+b+c+d+e) (auto calculated)** \_\_\_\_\_

## CPSLD Statistics 2007-2008

Periodicals

(g) Total Print Subscriptions: \_\_\_\_\_

Electronic Titles

(h) Catalogued Electronic Titles: \_\_\_\_\_

### 6. USE

a(i) Reference questions: \_\_\_\_\_

a(ii) Directional questions: \_\_\_\_\_

**a(iii) Total (a(i)+a(ii)) (auto calculated):** \_\_\_\_\_

### Library Instruction

(b) No. of Participants at group presentations: \_\_\_\_\_

(c) No. of Presentation to groups: \_\_\_\_\_

### Circulation:

(d) Direct: \_\_\_\_\_

(e) In-library use: \_\_\_\_\_

(f) Gate Count: \_\_\_\_\_

(g) ILL: Received (all formats) \_\_\_\_\_

(h) ILL: Sent (include all formats) \_\_\_\_\_

### 7. LIBRARY EXPENSES (capital & operating)

For purposes of consistency "expenditures" means actual expenditures vs budgeted expenditures.

(a) Personnel (salaries & fringe benefits): \_\_\_\_\_

(b) Monographs: \_\_\_\_\_

(c) Audio-Visual: \_\_\_\_\_

(d) Current Print Periodicals: \_\_\_\_\_

(e) Special Funding Envelopes for Collections: \_\_\_\_\_

**(f) Collection Subtotal (b+c+d+e=f) (auto calculated):** \_\_\_\_\_

(g) ELN Services \_\_\_\_\_

(h) Non-ELN Subscriptions \_\_\_\_\_

**(i) Electronic Products Subtotal (g+h) (auto calculated):** \_\_\_\_\_

**(j) Total Collection Expenditures (f+i) (auto calculated):** \_\_\_\_\_

(k) Other \_\_\_\_\_

**(l) Total Library Expenditures (a+j+k) (auto calculated):** \_\_\_\_\_

### 8. INSTITUTIONAL BUDGET

(a) Base Grant from Ministry \_\_\_\_\_

(b) Other Operating Funds \_\_\_\_\_

**(c) Total Institutional Budget (a+b) (auto calculated):** \_\_\_\_\_

**CPSLD Statistics 2007-2008**

**9. FACILITIES AND HOURS:**

For each staffed Library provide

Campus 1

Campus Name: \_\_\_\_\_

- (a) Total area in square meters: \_\_\_\_\_
- (b) Total number of seats: \_\_\_\_\_
- (c) Total hours open per week: \_\_\_\_\_
- (d) Total reference hours per week: \_\_\_\_\_

Campus 2

Campus Name: \_\_\_\_\_

- (a) Total area in square meters: \_\_\_\_\_
- (b) Total number of seats: \_\_\_\_\_
- (c) Total hours open per week: \_\_\_\_\_
- (d) Total reference hours per week: \_\_\_\_\_

Campus 3

Campus Name: \_\_\_\_\_

- (a) Total area in square meters: \_\_\_\_\_
- (b) Total number of seats: \_\_\_\_\_
- (c) Total hours open per week: \_\_\_\_\_
- (d) Total reference hours per week: \_\_\_\_\_

Campus 4

Campus Name: \_\_\_\_\_

- (a) Total area in square meters: \_\_\_\_\_
- (b) Total number of seats: \_\_\_\_\_
- (c) Total hours open per week: \_\_\_\_\_
- (d) Total reference hours per week: \_\_\_\_\_

- (e) Total area all campuses (auto calculated):** \_\_\_\_\_
- (f) Total seats all campuses (auto calculated):** \_\_\_\_\_
- (g) Total hours all campuses (auto calculated):** \_\_\_\_\_
- (h) Total ref hours all campuses (auto calculated):** \_\_\_\_\_

**10. COMPUTING INFRASTRUCTURE**

- (a) No. of public workstations: \_\_\_\_\_
  - (b) Wireless available:  Yes  No (use notes for clarification) \_\_\_\_\_
  - (c) No. of laptops available: \_\_\_\_\_
  - (d) No. of laptops circulated: \_\_\_\_\_
  - (e) No. of laptop ports \_\_\_\_\_
  - (f) Other Mobile devices  Yes  No \_\_\_\_\_
- If yes, please clarify \_\_\_\_\_

## CPSLD Statistics 2007-2008

### 11. LIBRARY AUTOMATED SYSTEM

(Give the name of the system you have, if any)

Cataloguing

Primary source of bibliographic records

Secondary source of bibliographic records

OPAC

Periodicals Check In

Acquisitions

Interlibrary Loans

---

---

---

---

---

---

---

---

### 12. EXPLANATORY NOTES

---

## LEGEND

BCIT	BRITISH COLUMBIA INSTITUTE OF TECHNOLOGY
CAM	CAMOSUN COLLEGE
CAP	CAPILANO COLLEGE
CNC	COLLEGE OF NEW CALEDONIA
COTR	COLLEGE OF THE ROCKIES
DOUG	DOUGLAS COLLEGE
ECIAD	EMILY CARR INSTITUTE OF ART & DESIGN
JI	JUSTICE INSTITUTE OF B.C.
KW	KWANTLEN UNIVERSITY COLLEGE
LC	LANGARA COLLEGE
MAL	MALASPINA UNIVERSITY-COLLEGE
NI	NORTH ISLAND COLLEGE
NL	NORTHERN LIGHTS COLLEGE
NW	NORTHWEST COMMUNITY COLLEGE
OC	OKANAGAN COLLEGE
QUC	QUEST UNIVERSITY CANADA
RR	ROYAL ROADS UNIVERSITY
SEL	SELKIRK COLLEGE
SFU	SIMON FRASER UNIVERSITY
TRU	THOMPSON RIVERS UNIVERSITY
TWU	TRINITY WESTERN UNIVERSITY
UBC	UNIVERSITY OF BRITISH COLUMBIA
UCFV	UNIVERSITY COLLEGE OF THE FRASER VALLEY
UNBC	UNIVERSITY OF NORTHERN BRITISH COLUMBIA
UVIC	UNIVERSITY OF VICTORIA
VCC	VANCOUVER COMMUNITY COLLEGE

	LIBRARY	2. CAMPUS STAFF RATIO		3. USERS								
		a	b	a	b	c	d	a+c=e	b+d=f	g	h	i
	Library Type	No. of Campuses with Library Staff	No. of Campuses without Library Staff	FTE AVED Ministry funded	FTE Students (audited)	ITA (Foundation + Apprenticeship) Funded	ITA (Foundation + Apprenticeship) Actual	Service plan total funded	Service plan total Actual	FTE faculty	Annual fee for Community Borrowers?	FEE \$
BCIT	Institute	3	2	11,136.00	11,439.20	6,219.00	7,114.00	17,355.00	18,553.20		Yes	50
CAM	College	2		6,803.00	6,305.40	1,833.00	2,035.00	8,636.00	8,340.40	442.00	No	
CAP	College	1	2	5,450.00	4,615.00	53.00	13.00	5,503.00	4,628.00	376.79	Yes	25
CNC	College	5	1	3,030.00	2,178.80	1,256.00	1,260.00	4,286.00	3,438.80	219.00	No	
COTR	College	1	6	1,612.00	1,566.90	571.00	552.00	2,183.00	2,118.90	135.17	No	
DOUG	College	2		8,122.00	6,904.30			8,122.00	6,904.30	451.00	Yes	25
ECIAD	Institute	1		1,327.00	1,352.40			1,327.00	1,352.40	62.13	Yes	60
JI	Institute	1	6	2,318.00	2,848.00			2,318.00	2,848.00	220.00	No	
KW	University College	4		9,041.00	7,929.90	1,142.00	1,108.00	10,183.00	9,037.90	576.68	Yes	45
LC	College	1		6,916.00	6,332.70			6,916.00	6,332.70	393.00	Yes	15



	LIBRARY	2. CAMPUS STAFF RATIO		3. USERS								
		a	b	a	b	c	d	a+c=e	b+d=f	g	h	i
	Library Type	No. of Campuses with Library Staff	No. of Campuses without Library Staff	FTE AVED Ministry funded	FTE Students (audited)	ITA (Foundation + Apprenticeship) Funded	ITA (Foundation + Apprenticeship) Actual	Service plan total funded	Service plan total Actual	FTE faculty	Annual fee for Community Borrowers?	FEE \$
<b>MAL</b>	University College	3	1	6,664.00	5,567.60	1,103.00	1,114.00	7,767.00	6,681.60	511.76	Yes	25
<b>NI</b>	College	4		2,188.00	1,670.50	567.00	556.00	2,755.00	2,226.50	140.00	No	
<b>NL</b>	College	2	6	1,481.00	805.20	648.00	635.00	2,129.00	1,440.20	118.35	No	
<b>NW</b>	College	3	3	1,674.00	1,468.00	424.00	394.00	2,098.00	1,862.00	113.00	No	
<b>OC</b>	College	4		4,350.00	4,287.60	2,138.00	2,405.00	6,488.00	6,692.60	305.60	Yes	20
<b>QUC</b>	University	1			75.00				75.00	6.50	No	
<b>RR</b>	University	1		1,959.00	2,041.60			1,959.00	2,041.60	43.50	Yes	25
<b>SEL</b>	College	3	5	2,312.00	1,967.10	489.00	490.00	2,801.00	2,457.10	225.00	No	
<b>SFU</b>	University	3		18,944.00	20,505.00			18,944.00	20,505.00	930.00	Yes	100
<b>TRU</b>	University	2		8,065.00	6,460.80	1,337.00	1,423.00	9,402.00	7,883.80	477.00	Yes	25
<b>TWU</b>	University	1			2,069.00				2,069.00	125.00	Yes	60
<b>UBC</b>	University	3		39,153.00	38,921.20			39,153.00	38,921.20	2,722.00	yes	120
<b>UCFV</b>	University College	3	1	5,961.00	5,737.50	405.00	500.00	6,366.00	6,237.50	409.00	Yes	25
<b>UNBC</b>	University	1	4	3,268.00	2,976.30			3,268.00	2,976.30	193.00	Yes	25
<b>UVIC</b>	University	1		15,644.00	15,572.00			15,644.00	15,572.00	765.80	Yes	50
<b>VCC</b>	College	2		6,392.00	5,670.70	1,675.00	1,772.00	8,067.00	7,442.70	458.00	No	

	<b>4. LIBRARY PERSONNEL</b>					
	<b>a</b>	<b>b</b>	<b>c</b>	<b>a+b+c=d</b>	<b>e</b>	<b>d + e = f</b>
	<b>FTE Librarians (including Director)</b>	<b>FTE Library Staff</b>	<b>FTE Other Professionals</b>	<b>FTE Personnel</b>	<b>FTE Student Aides</b>	<b>Total Personnel in FTE</b>
<b>BCIT</b>	10.36	24.40	2.05	36.81		36.81
<b>CAM</b>	5.50	13.71		19.21	0.15	19.36
<b>CAP</b>	4.86	12.54		17.40		17.40
<b>CNC</b>	4.00	8.20		12.20		12.20
<b>COTR</b>	1.00	5.56		6.56		6.56
<b>DOUG</b>	11.09	26.00		37.09	1.77	38.86
<b>ECIAD</b>	3.60	8.07		11.67	0.50	12.17
<b>JI</b>	4.00	3.20		7.20		7.20
<b>KW</b>	19.19	22.47		41.66	6.40	48.06
<b>LC</b>	10.30	16.40	1.00	27.70		27.70

	4. LIBRARY PERSONNEL					
	a	b	c	a+b+c=d	e	d + e = f
	FTE Librarians (including Director)	FTE Library Staff	FTE Other Professionals	FTE Personnel	FTE Student Aides	Total Personnel in FTE
<b>MAL</b>	8.60	18.00		26.60	2.00	28.60
<b>NI</b>	2.00	7.00		9.00		9.00
<b>NL</b>	2.00	4.70		6.70		6.70
<b>NW</b>	3.00	4.90		7.90	0.02	7.92
<b>OC</b>	8.00	22.00		30.00	1.50	31.50
<b>QUC</b>	1.00	1.00		2.00	0.50	2.50
<b>RR</b>	6.60	10.30	2.00	18.90		18.90
<b>SEL</b>	2.00	5.80	1.00	8.80		8.80
<b>SFU</b>	46.05	93.04	14.30	153.39	13.00	166.39
<b>TRU</b>	8.00	15.00		23.00	1.70	24.70
<b>TWU</b>	7.00	7.00	1.00	15.00	4.00	19.00
<b>UBC</b>	80.20	170.43	26.33	276.96	30.18	307.14
<b>UCFV</b>	7.48	16.85		24.33	0.91	25.24
<b>UNBC</b>	8.00	13.50	1.00	22.50	2.29	24.79
<b>UVIC</b>	33.00	100.59	12.00	145.59	18.66	164.25
<b>VCC</b>	9.22	23.77		32.99	0.62	33.61

5. COLLECTIONS								
	a	b	c	d	e	a+b+c+d+e = f	g	h
	Monographs	Videos & Films	Other Audio Formats	Other Visual Formats	Back Issues Periodicals	<b>Total Collection</b>	Total Print Subscriptions	Catalogued Electronic Titles
<b>BCIT</b>	181,377	9,555	172		17,108	208,212	608	2,837
<b>CAM</b>	66,880	4,963	654	23	10,000	82,520	359	43,861
<b>CAP</b>	116,980	4,956	3,503	7	19,318	144,764	440	3,397
<b>CNC</b>	166,841	6,349	1,016	392	21,891	196,489	328	2,269
<b>COTR</b>	54,596	6,745	71	524	4,243	66,179	92	798
<b>DOUG</b>	150,345	10,709	7,522	418	14,783	183,777	924	11,898
<b>ECIAD</b>	28,008	3,627	848	148,000	3,880	184,363	193	758
<b>JI</b>	22,845	4,579	161	33	4,553	32,171	185	1,994
<b>KW</b>	165,733	8,151	2,180	508	13,360	189,932	925	8,800
<b>LC</b>	86,751	11,940	2,645	318		101,654	348	1,814

5. COLLECTIONS								
	a	b	c	d	e	a+b+c+d+e = f	g	h
	Monographs	Videos & Films	Other Audio Formats	Other Visual Formats	Back Issues Periodicals	Total Collection	Total Print Subscriptions	Catalogued Electronic Titles
<b>MAL</b>	255,877	8,381	3,710	1,733		269,701	653	13,613
<b>NI</b>	32,192	2,557	39	888	2,042	37,718	314	879
<b>NL</b>	44,533	5,775	88	77	1,040	51,513	200	9
<b>NW</b>	67,432	5,982	169	58	5,000	78,641	242	
<b>OC</b>	118,889	8,538	419			127,846	600	2,258
<b>QUC</b>	3,287	20			1,202	4,509	72	
<b>RR</b>	50,980	754				51,734	151	37,264
<b>SEL</b>	81,182	3,551	444	84	9,200	94,461	400	850
<b>SFU</b>	2,369,049	9,250	69,171	904,696	287,227	3,639,393	6,660.00	774,349.00
<b>TRU</b>	210,708	10,440	2,481	329	48,755	272,713	791	40,624
<b>TWU</b>	254,606	3,970	874	79	83,592	343,121	813	12,929
<b>UBC</b>	10,778,683	29,503	87,160	512,509		11,407,855	16,795	358,192
<b>UCFV</b>	172,318	7,935	458	426	26,628	207,765	664	42,333
<b>UNBC</b>	298,225	4,044	178	421		302,868	830	12,741
<b>UVIC</b>	4,444,407	9,179	68,755			4,522,341	5,197	36,494
<b>VCC</b>	71,028	8,767	7,167	12	27,107	114,081	409	1,197

	6. USE									
	a (i)	a (ii)	a(i)+a(ii)=a (iii)	b	c	d	e	f	g	h
	Reference Questions	Directional questions	Total	No. of Participants at group presentations	No. of Presentations to groups	Circulation: Direct	Circulation: In-Library Use	Gate Count	ILL: Received (all formats)	ILL: Sent (include all formats)
<b>BCIT</b>	12,321		12,321	2,205	127	69,188	14,771	641,926	1,318	892
<b>CAM</b>	6,472	2,650	9,122	4,752	179	45,859		338,052	523	518
<b>CAP</b>	7,884	423	8,307	4,900	138	43,320		340,667	665	627
<b>CNC</b>	15,351		15,351	1,652	113	29,294	26,365	162,107	639	813
<b>COTR</b>	4,397	11,448	15,845	643	47	23,919	10,416	138,029	230	246
<b>DOUG</b>	22,927	951	23,878	7,616	25	201,660	12,346	604,468	1,032	917
<b>ECIAD</b>	2,944	431	3,375	258	19	56,542			172	157
<b>JI</b>	2,319	1,056	3,375	530	38	8,179	538	44,603	126	562
<b>KW</b>	16,733	11,951	28,684	8,186	356	74,469	20,127	641,851	2,402	961
<b>LC</b>	14,104		14,104	3,931	151	72,080		480,706	1,361	690

	6. USE									
	a (i)	a (ii)	a(i)+a(ii)=a (iii)	b	c	d	e	f	g	h
	Reference Questions	Directional questions	Total	No. of Participants at group presentations	No. of Presentations to groups	Circulation: Direct	Circulation: In-Library Use	Gate Count	ILL: Received (all formats)	ILL: Sent (include all formats)
<b>MAL</b>	21,516		21,516	3,206	142	129,772		333,891	6,232	1,372
<b>NI</b>	4,108		4,108	539		12,427	3,324	146,478	1,105	315
<b>NL</b>	5,723	3,454	9,177	407	37	7,228	385	71,045	846	397
<b>NW</b>				967	67	15,976		36,060	669	403
<b>OC</b>	10,287	3,891	14,178	4,522	210	33,002			2,149	987
<b>QUC</b>	180	1,069	1,249	120	6	391	237	25,653	104	
<b>RR</b>	2,583	1,691	4,274	1,000	30	7,183	630	65,410	221	211
<b>SEL</b>	2,064	5,000	7,064	980	93	16,614	4,136	49,743	528	406
<b>SFU</b>	54,800	69,929	124,729	21,205	908	628,548	220,265	1,896,576	16,633	14,285
<b>TRU</b>	9,780	6,959	16,739	3,516	203	116,571	22,812	158,959	2,463	537
<b>TWU</b>	3,620	913	4,533	1,500	25	119,022		167,157	1,675	207
<b>UBC</b>	108,358	84,812	193,170	29,253	2,496	2,692,706		2,821,602	22,542	22,884
<b>UCFV</b>	14,542		14,542	6,175	247	116,266	16,527	298,554	3,125	1,204
<b>UNBC</b>	2,676	3,004	5,680	1,958	97	48,292			4,362	1,055
<b>UVIC</b>	42,046	11,980	54,026	8,311	402	431,661	445,875	2,904,614	12,883	5,105
<b>VCC</b>	22,330	4,945	27,275	4,694	275	107,944	23,054	419,200	945	549

	7. LIBRARY EXPENSES (CAPITAL AND OPERATING)								
	a	b	c	d	e	b+c+d+e=f	g	h	g+h=i
	Personnel (Salaries and fringe benefits)	Monographs	Audio-Visual	Current Print Periodicals	Special Funding Envelopes for Collections	Collections Subtotal	ELN Services	Non-ELN Subscriptions	Electronic Products Subtotal
<b>BCIT</b>	2,286,344.00	264,561.00	8,770.00	193,038.00		466,369.00	93,619.86	231,565.14	325,185.00
<b>CAM</b>	1,154,599.00	100,111.91	19,629.70	41,160.82		160,902.43	53,496.88	31,472.38	84,969.26
<b>CAP</b>	945,246.00	118,309.00	864.00	75,727.00		194,900.00	45,945.00	22,619.00	68,564.00
<b>CNC</b>	750,420.00	74,216.00		46,354.00		120,570.00	38,087.00		38,087.00
<b>COTR</b>	316,545.00	23,445.52		7,397.59		30,843.11	18,823.89		18,823.89
<b>DOUG</b>	2,317,200.00	240,000.00	54,900.00	100,800.00		395,700.00	117,610.00	52,850.00	170,460.00
<b>ECIAD</b>	675,517.02	42,608.42	17,530.59	22,641.86		82,780.87	37,476.08	13,432.80	50,908.88
<b>JI</b>	441,421.00	27,000.00	18,600.00	26,521.00	15,000.00	87,121.00	40,705.00	16,885.00	57,590.00
<b>KW</b>	3,014,541.00	455,852.00	48,345.00	150,561.00	7,488.00	662,246.00	148,914.00	70,809.00	219,723.00
<b>LC</b>	1,952,375.00	79,739.41	31,731.89	58,344.00		169,815.30	47,475.77	19,421.55	66,897.32



	7. LIBRARY EXPENSES (CAPITAL AND OPERATING)								
	a	b	c	d	e	b+c+d+e=f	g	h	g+h=i
	Personnel (Salaries and fringe benefits)	Monographs	Audio-Visual	Current Print Periodicals	Special Funding Envelopes for Collections	Collections Subtotal	ELN Services	Non-ELN Subscriptions	Electronic Products Subtotal
<b>MAL</b>	1,639,336.00	268,612.00		87,109.00		355,721.00	93,026.00	403,353.00	496,379.00
<b>NI</b>	418,024.00	41,142.00		21,342.00		62,484.00	26,706.00		26,706.00
<b>NL</b>	386,487.31	21,210.02	12,844.73	16,071.15		50,125.90	52,735.85	592.40	53,328.25
<b>NW</b>	540,674.00	67,432.00	6,209.00	18,000.00		91,641.00	19,700.00		19,700.00
<b>OC</b>	1,593,958.00	360,895.00	55,388.00	132,285.00	344,820.00	893,388.00	100,000.00	81,261.00	181,261.00
<b>QUC</b>	121,728.00	140,000.00	3,000.00	10,000.00		153,000.00		40,000.00	40,000.00
<b>RR</b>	966,549.00	139,171.00	12,407.00	16,738.00		168,316.00	68,592.00	221,324.00	289,916.00
<b>SEL</b>	535,871.00	20,744.00	6,210.00	65,311.00		92,265.00	26,708.00	992.00	27,700.00
<b>SFU</b>	9,242,486.00	3,301,501.00	162,391.00	1,563,963.00	149,242.00	5,177,097.00	241,828.00	3,698,165.00	3,939,993.00
<b>TRU</b>	1,465,295.00	250,412.00		188,426.00	107,832.00	546,670.00			532,055.00
<b>TWU</b>	722,000.00	183,700.00	3,500.00	55,000.00	135,000.00	377,200.00	72,599.44	37,140.56	109,740.00
<b>UBC</b>	17,276,087.00	3,971,134.00		3,243,544.00		7,214,678.00	482,497.00	7,193,904.00	7,676,401.00
<b>UCFV</b>	1,535,389.00	225,275.00	6,246.00	170,083.00		401,604.00	103,432.00	303,974.00	407,406.00
<b>UNBC</b>	1,457,523.00	224,069.74	9,597.77	357,639.18		591,306.69	111,919.19	702,056.86	813,976.05
<b>UVIC</b>	7,066,968.00	1,994,323.10	32,733.91	797,080.00		2,824,137.01	185,147.00	3,272,630.00	3,457,777.00
<b>VCC</b>	2,006,413.00	123,734.12	53,296.37	30,976.00	4,000.00	212,006.49	77,987.05	7,633.36	85,620.41

	<b>f + i = j</b>	<b>k</b>	<b>a+j+k= l</b>
	<b>Total Collection Expenditures</b>	<b>Other</b>	<b>Total Library Expenditures</b>
<b>BCIT</b>	791,554.00	196,851.00	3,274,749.00
<b>CAM</b>	245,871.69	71,404.00	1,471,874.69
<b>CAP</b>	263,464.00		1,208,710.00
<b>CNC</b>	158,657.00	55,823.00	964,900.00
<b>COTR</b>	49,667.00	23,646.00	389,858.00
<b>DOUG</b>	566,160.00	68,900.00	2,952,260.00
<b>ECIAD</b>	133,689.75		809,206.77
<b>JI</b>	144,711.00	65,137.00	651,269.00
<b>KW</b>	881,969.00	128,006.00	4,024,516.00
<b>LC</b>	236,712.62		2,189,087.62

	$f + i = j$	k	$a+j+k= l$
	Total Collection Expenditures	Other	Total Library Expenditures
<b>MAL</b>	852,100.00	52,600.00	2,544,036.00
<b>NI</b>	89,190.00	56,573.00	563,787.00
<b>NL</b>	103,454.15	36,440.00	526,381.46
<b>NW</b>	111,341.00	32,450.00	684,465.00
<b>OC</b>	1,074,649.00		2,668,607.00
<b>QUC</b>	193,000.00	42,250.00	356,978.00
<b>RR</b>	458,232.00		1,424,781.00
<b>SEL</b>	119,965.00	46,771.00	702,607.00
<b>SFU</b>	9,117,090.00	689,664.00	19,049,240.00
<b>TRU</b>	1,078,725.00	181,914.00	2,725,934.00
<b>TWU</b>	486,940.00		1,208,940.00
<b>UBC</b>	14,891,079.00	3,382,360.00	35,549,526.00
<b>UCFV</b>	809,010.00	96,637.00	2,441,036.00
<b>UNBC</b>	1,405,282.74		2,862,805.74
<b>UVIC</b>	6,281,914.01	2,212,005.00	15,560,887.01
<b>VCC</b>	297,626.90	107,423.00	2,411,462.90

8. INSTITUTIONAL BUDGET								
	a	b	a + b = c		a	b	c	d
	Base Grant from Ministry	Other operating Funds	Total Institutional Budget	Campus Name	Total area in square meters	Total number of seats	Total hours open per week	Total reference hours per week
<b>BCIT</b>	119,651,089.00	128,015,657.00	247,666,746.00	BCIT Burnaby Campus	1,722.00	874.00	89.50	62.00
<b>CAM</b>	50,518,162.00	38,747,385.00	89,265,547.00	Lansdowne	3,325.00	299.00	73.00	65.00
<b>CAP</b>	34,735,676.00	24,529,515.00	59,265,191.00	North Vancouver	3,716.00	360.00	74.50	74.50
<b>CNC</b>	27,224,528.00	3,437,000.00	30,661,528.00	Prince George	2,300.00	257.00	70.00	35.00
<b>COTR</b>	14,786,445.00	6,924,099.00	21,710,544.00	Cranbrook	1,016.00	86.00	74.00	47.00
<b>DOUG</b>	51,539,559.00	28,529,935.00	80,069,494.00	New Westminster	3,448.50	390.00	70.50	70.50
<b>ECIAD</b>	12,004,815.00	8,345,577.00	20,350,392.00		992.00	85.00	78.00	78.00
<b>JI</b>	7,439,641.00	36,665,229.00	44,104,870.00	New Westminster (Main Campus)	654.00	66.00	52.00	52.00
<b>KW</b>	57,558,000.00	40,790,900.00	98,348,900.00	Langley	1,190.00	190.00	68.25	62.00
<b>LC</b>	39,370,560.00	1,534,456.00	40,905,016.00	Langara	4,743.00	416.00	66.00	66.00

8. INSTITUTIONAL BUDGET								
	a	b	a + b = c		a	b	c	d
	Base Grant from Ministry	Other operating Funds	Total Institutional Budget	Campus Name	Total area in square meters	Total number of seats	Total hours open per week	Total reference hours per week
<b>MAL</b>	72,587,909.00		72,587,909.00	Nanaimo	6,812.00	677.00	91.00	47.00
<b>NI</b>	23,000,903.00	3,389,201.00	26,390,104.00	Comox Valley	495.00	87.00	54.00	54.00
<b>NL</b>	20,724,797.00	8,341,229.00	29,066,026.00	Dawson Creek	420.00	48.00	60.00	35.00
<b>NW</b>	16,023,045.00	7,696,694.00	23,719,739.00	Terrace	903.00	80.00	69.00	20.00
<b>OC</b>	68,582,000.00	13,489,000.00	82,071,000.00	Kelowna	728.34	98.00	82.00	61.00
<b>QUC</b>				Quest University Canada	855.00	136.00	64.00	64.00
<b>RR</b>	15,250,000.00	34,820,000.00	50,070,000.00	Royal Roads University	1,900.00	160.00	81.50	62.00
<b>SEL</b>	23,516,981.00	7,744,128.00	31,261,109.00	Castlegar	1,250.00	124.00	61.50	51.00
<b>SFU</b>	211,811,000.00	306,694,000.00	518,505,000.00	Burnaby	16,503.00	1,157.00	99.00	86.00
<b>TRU</b>	73,940,029.00	64,547,807.00	138,487,836.00	Kamloops	2,903.00	185.00	81.00	81.00
<b>TWU</b>				Norma Marion Alloway Library	3,344.50	338.00	83.00	60.00
<b>UBC</b>	482,864,000.00	211,933,000.00	694,797,000.00	Point Grey	47,264.00	4,065.00	908.00	802.00
<b>UCFV</b>	42,856,879.00	31,603,121.00	74,460,000.00	Abbotsford	3,149.00	250.00	80.00	74.00
<b>UNBC</b>	41,330,400.00	17,239,419.00	58,569,819.00	Geoffrey R. Walter Library	4,248.70	537.00	92.00	56.00
<b>UVIC</b>	164,324,000.00	98,237,000.00	262,561,000.00	MAIN	21,156.76	1,631.00	100.00	90.00
<b>VCC</b>	47,808,329.00	39,814,838.00	87,623,167.00	Broadway Campus	1,603.00	202.00	56.00	51.00

9. FACILITIES AND HOURS: For each staffed Library										
		a	b	c	d		a	b	c	d
	Campus Name	Total area in square meters	Total number of seats	Total hours open per week	Total reference hours per week	Campus Name	Total area in square meters	Total number of seats	Total hours open per week	Total reference hours per week
<b>BCIT</b>	BCIT Marine Campus	232.00	53.00	35.00	7.00	BCIT Aerospace and Technology Campus	257.90	86.00	47.00	7.00
<b>CAM</b>	Interurban	1,139.00	156.00	54.00	20.00					
<b>CAP</b>	Sunshine Coast (Sechelt)	98.90	30.00	47.50		Squamish	11.90	6.00	47.50	
<b>CNC</b>										
<b>COTR</b>										
<b>DOUG</b>	David Lam	1,916.00	350.00	70.50	70.50					
<b>ECIAD</b>										
<b>JI</b>										
<b>KW</b>	Richmond	1,700.00	210.00	68.25	62.00	Surrey	1,720.00	326.00	68.25	62.00
<b>LC</b>										

9. FACILITIES AND HOURS: For each staffed Library										
		a	b	c	d		a	b	c	d
	Campus Name	Total area in square meters	Total number of seats	Total hours open per week	Total reference hours per week	Campus Name	Total area in square meters	Total number of seats	Total hours open per week	Total reference hours per week
<b>MAL</b>	Cowichan	305.00	87.00	64.00	64.00	Powell River	161.00	20.00	25.00	25.00
<b>NI</b>	Campbell River	305.00	69.00	54.00	54.00	Port Alberni	198.00	52.00	52.00	52.00
<b>NL</b>	Fort St. John	350.00	51.00	60.00	35.00	Fort Nelson	103.00	25.00	46.00	40.00
<b>NW</b>	Prince Rupert	111.00	25.00	51.00	15.00	Smithers	50.00	10.00	20.00	20.00
<b>OC</b>	Penticton	415.73	78.00	73.75		Salmon Arm	382.75	70.00	72.00	
<b>QUC</b>										
<b>RR</b>										
<b>SEL</b>	Silver King (Nelson)	155.00	15.00	20.00	20.00	Tenth Street (Nelson)	105.00	4.00	20.00	20.00
<b>SFU</b>	Vancouver	765.00	156.00	67.00	67.00	Surrey	2,137.00	250.00	69.00	54.50
<b>TRU</b>	Williams Lake	172.00	20.00	58.00	30.00					
<b>TWU</b>										
<b>UBC</b>	Robson Sq	800.00	23.00	37.50	32.50	Okanagan	2,756.00	450.00	95.50	74.50
<b>UCFV</b>	Chilliwack	315.00	30.00	66.50	66.50	Mission	71.00	14.00	22.00	22.00
<b>UNBC</b>										
<b>UVIC</b>										
<b>VCC</b>	Downtown Campus	675.00	129.00	62.50	55.00					

		a	b	c	d	e	f	g	h
	Campus Name	Total area in square meters	Total number of seats	Total hours open per week	Total reference hours per week	Total square meters all campuses	Total seats all campuses	Total open hours all campuses	Total reference hours all campuses
<b>BCIT</b>						2,211.90	1,013.00	171.50	76.00
<b>CAM</b>						4,464.00	455.00	127.00	85.00
<b>CAP</b>						3,826.80	396.00	169.50	74.50
<b>CNC</b>						2,300.00	257.00	70.00	35.00
<b>COTR</b>						1,016.00	86.00	74.00	47.00
<b>DOUG</b>						5,364.50	740.00	141.00	141.00
<b>ECIAD</b>						992.00	85.00	78.00	78.00
<b>JI</b>						654.00	66.00	52.00	52.00
<b>KW</b>	Cloverdale	546.00	86.00	60.00	16.00	5,156.00	812.00	264.75	202.00
<b>LC</b>						4,743.00	416.00	66.00	66.00



		a	b	c	d	e	f	g	h
	Campus Name	Total area in square meters	Total number of seats	Total hours open per week	Total reference hours per week	Total square meters all campuses	Total seats all campuses	Total open hours all campuses	Total reference hours all campuses
<b>MAL</b>						7,278.00	784.00	180.00	136.00
<b>NI</b>	Port Hardy	308.00	19.00	5.50	5.50	1,306.00	227.00	165.50	165.50
<b>NL</b>						873.00	124.00	166.00	110.00
<b>NW</b>						1,064.00	115.00	140.00	55.00
<b>OC</b>	Vernon	647.98	96.00	74.50		2,174.80	342.00	302.25	61.00
<b>QUC</b>						855.00	136.00	64.00	64.00
<b>RR</b>						1,900.00	160.00	81.50	62.00
<b>SEL</b>						1,510.00	143.00	101.50	91.00
<b>SFU</b>						19,405.00	1,563.00	235.00	207.50
<b>TRU</b>						3,075.00	205.00	139.00	111.00
<b>TWU</b>						3,344.50	338.00	83.00	60.00
<b>UBC</b>						50,820.00	4,538.00	1,041.00	909.00
<b>UCFV</b>						3,535.00	294.00	168.50	162.50
<b>UNBC</b>						4,248.70	537.00	92.00	56.00
<b>UVIC</b>						21,156.76	1,631.00	100.00	90.00
<b>VCC</b>						2,278.00	331.00	118.50	106.00

**10. COMPUTING INFRASTRUCTURE**

	a	b	c	d	e	f	
	No. of public workstations	Wireless available	No. of laptops available	No. of laptops circulated	No. of laptop ports	Other Mobile devices	If yes, please clarify
<b>BCIT</b>	116	Yes	24	2,993	170	Yes	LCD Projectors
<b>CAM</b>		Yes				No	
<b>CAP</b>	69	Yes	16	1,117	50	No	
<b>CNC</b>	43	Yes			8	No	
<b>COTR</b>	58	Yes	20	668		Yes	2 LCD projector/computer mobile stations. 1 disability/adaptive technology mobile work station.
<b>DOUG</b>	169	Yes	35	1,936		Yes	Cameras (35 mm), Digital cameras, digital camcorders, light sets, tripods, LCD Projectors Computer on Wheels, Data Projectors, Slide projectors, Overhead projectors, Video projectors, TV/VCR/DVD units, DVD player, blaster/CD players, Cassette recorders, PA system.
<b>ECIAD</b>	14	Yes					
<b>JI</b>	23	Yes			8	No	
<b>KW</b>	166	Yes	24	1,382		Yes	Cameras (35 mm), Digital cameras, digital camcorders, light sets, tripods, Computer on Wheels, Data Projectors, Slide projectors, Overhead projectors, Video projectors, USB Drive, Laser disk player, TV/VCR/DVD units, DVD player, blaster/CD players, Cassette recorders, Walkmans, PA system.
<b>LC</b>	106	Yes				Yes	Wireless Internet with Innovative's AirPac product allows any wireless device with browser capability to access the OPAC

**10. COMPUTING INFRASTRUCTURE**

	a	b	c	d	e	f	
	No. of public workstations	Wireless available	No. of laptops available	No. of laptops circulated	No. of laptop ports	Other Mobile devices	If yes, please clarify
<b>MAL</b>	129	Yes			62		
<b>NI</b>	46	Yes					
<b>NL</b>	36	Yes	1				
<b>NW</b>	30	No			3	No	
<b>OC</b>	123	Yes	35	2,423		Yes	Portable dvd players
<b>QUC</b>	7	Yes			80	Yes	digital cameras; camcorders
<b>RR</b>	45	Yes			19		
<b>SEL</b>	27	Yes				No	
<b>SFU</b>	391	Yes	73	36,691	45	No	
<b>TRU</b>	43	Yes	5	438	11	No	
<b>TWU</b>	25	Yes			12	No	
<b>UBC</b>	566	yes	50.00	11,019	157	no	
<b>UCFV</b>	44	Yes				No	
<b>UNBC</b>	94	Yes				No	
<b>UVIC</b>	153	Yes	22	6,460	110	No	
<b>VCC</b>	43	No					

**11. LIBRARY AUTOMATED SYSTEM**

	Cataloguing	Primary source of bibliographic records	Secondary source of bibliographic records	OPAC	Periodicals Check In	Acquisitions	Interlibrary Loans
<b>BCIT</b>	Innovative	OCLC/LC	OCLC/BLACKWELL'S	Innovative			
<b>CAM</b>	SirsiDynix Unicorn	Agent, Amicus via Smartport (Z39.50)	UAlberta, UBC, Melvyl	SIRSI Webcat	SIRSI Unicorn	SIRSI Unicorn	Ariel/Outlook
<b>CAP</b>	Innovative Interfaces Inc.	AG Canada	LC, AEMAC	INNOPAC	Innovative	Innovative	Ariel/Outlook
<b>CNC</b>	Sirsi	Amicus	LC	Sirsi WebCat			Agent, e-mail
<b>COTR</b>	SIRSI Unicorn	Z39.50	Outlook	SIRSI Webcat	SIRSI Unicorn	SIRSI Unicorn	Outlook/Ariel GODOT/email
<b>DOUG</b>	Innovative	AG Canada, OCLC, Amicus	Other z39.50 sites	Innovative	Innovative	Innovative	Ariel/Outlook
<b>ECIAD</b>	SirsiDynix Horizon	Blackwell N.A.	United Library Services	Horizon	Horizon	Horizon	Ariel, e-mail
<b>JI</b>	SIRSI	LC	AMICUS	SIRSI	SIRSI	SIRSI	Outlook ILL, ARIEL
<b>KW</b>	Sirsi	LC	UBC	SIRSI	SIRSI	SIRSI	GODOT, Ariel, Sirsi
<b>LC</b>	Innovative Interfaces Inc (III) - Millennium	Bookwhere	Z39.50 libraries	III - Millennium	III - Millennium	III - Millennium	Ariel - Outlook

**11. LIBRARY AUTOMATED SYSTEM**

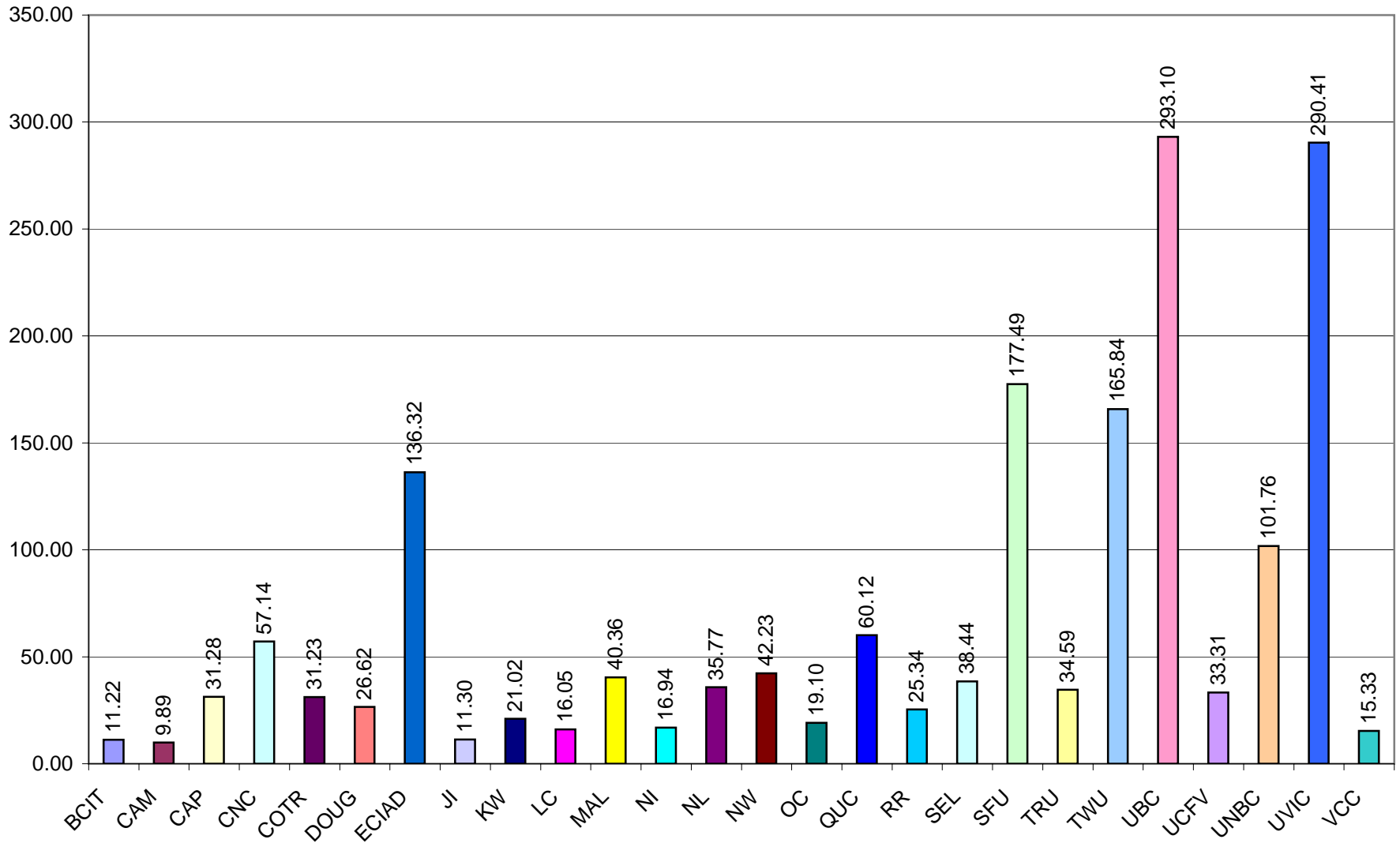
	Cataloguing	Primary source of bibliographic records	Secondary source of bibliographic records	OPAC	Periodicals Check In	Acquisitions	Interlibrary Loans
<b>MAL</b>	SIRSI	BIBLIOFILE/AMICUS	BOOKWHERE	SIRSI	SIRSI	SIRSI	RELAIS
<b>NI</b>	Sirsi	LC/National Library/Outlook		Sirsi		Sirsi	Agent, e-mail
<b>NL</b>	SIRSI Unicorn	Amicus	Outlook	Sirsi Webcat	Sirsi	SIRSI	Agent
<b>NW</b>	Sirsi Unicorn	Amicus	Outlook/CIP	Sirsi WebCat	Sirsi	Sirsi	manual/Outlook
<b>OC</b>	ExLibris	Blackwells	ExLibris Voyager	ExLibris Voyager	ExLibris Voyager	ExLibris Voyager	Ariel - outlook
<b>QUC</b>	Voyager	Library of Congress	Library and Archives Canada	Voyager (Endeavor)	Voyager (Endeavor)	Voyager (Endeavor)	manual
<b>RR</b>	Voyager (Endeavor)	bn	Z39.50 Amicus	Voyager (Endeavor)	Voyager (Endeavor)	Voyager (Endeavor)	
<b>SEL</b>	Sirsi	National Library/LC/Outlook	other Z39.50 sites	Sirsi Webcat	Sirsi	Sirsi	Ariel, Outlook
<b>SFU</b>	Innovative Interfaces, Inc. (III)	Blackwell's North America	OCLC and AG Canada	III Millennium	III Java Millennium	III Java Millennium	Relais
<b>TRU</b>	Sirsi/Unicom	Blackwell North America	Amicus	Sirsi/Unicorn	Sirsi/Unicorn	Sirsi/Unicorn	Open ILL
<b>TWU</b>	SirsiDynix Horizon	OCLC	Amicus	SirsiDynix HP	N/A	SirsiDynix Horizon	Relais/OCLC
<b>UBC</b>	Voyager(Ex Libris)	LC	OCLC	Voyager	Voyager	Voyager	Relais, etc.
<b>UCFV</b>	Sirsi Unicom	LC, Amicus, other libraries using Z39.50	see above	Sirsi Unicorn	Sirsi Unicorn	Sirsi Unicorn	Open ILL
<b>UNBC</b>	Innovative	OCLC	National Library of Canada	Innovative	Innovative	Innovative	Relais International
<b>UVIC</b>	Voyager/ExLibris	OCLC; Vendor records; Z39.50 databases		Voyager/ExLibris	Voyager/ExLibris	Voyager/ExLibris	OCLC; Relais
<b>VCC</b>	VTLS Virtua	B&T	BOOKWHERE	VTLS	VTLS	VTLS	VARIOUS

	a) Volumes/FTE Student: 5(f)/3(f)	b) Subscriptions/FTE Student: 5(g)/3(f)	c) Collection Expenditures/FTE Student: 7(j)/3(f)	d) Library Expenditures/FTE Student: 7(i)/3(f)	e) Collection Expenditures as % of Library Expenditures: 7(j)	f) Periodicals as % of Library Expenditures: 7(d)/7(i)	g) Electronic Services as % of Library Expenditures: 7(i)/7(l)	h) Library Expenditures as % of Institutional Budget: 7(i)/8(c)	i) FTE Students/FTE Library Personnel: 3(f)/4(f)	j) Direct Circulation/FTE Student: 6(d)/3(f)	k) Direct Circulation/Total Volumes: 6(d)/5(f)	l) Total Library Expenditure/Circulation: 7(i)/6(c)	m) Reference Transactions/FTE Student: 6a(iii)/3(f)	n) Number of Students Instructed/FTE Students: 6(b)/3(f)	o) Total Library Area/FTE Students: 9(e) total /3(f)	p) Number of Seats/FTE Student: 9(f) total /3(f)	q) Hours Open/FTE Personnel: 9(g) total /4(f)	r) Reference Hours/Total Open Hours: 9(h) total /9(g)
Library	Ratios																	
BCIT	11.22	0.03	42.66	176.51	24.17%	5.89%	9.93%	1.32%	504.03	3.73	0.33	47.33	0.66	0.12	0.12	0.05	4.66	0.44
CAM	9.89	0.04	29.48	176.48	16.70%	2.80%	5.77%	1.65%	430.81	5.50	0.56	32.10	1.09	0.57	0.54	0.05	6.56	0.67
CAP	31.28	0.10	56.93	261.17	21.80%	6.27%	5.67%	2.04%	265.98	9.36	0.30	27.90	1.79	1.06	0.83	0.09	9.74	0.44
CNC	57.14	0.10	46.14	280.59	16.44%	4.80%	3.95%	3.15%	281.87	8.52	0.15	32.94	4.46	0.48	0.67	0.07	5.74	0.50
COTR	31.23	0.04	23.44	183.99	12.74%	1.90%	4.83%	1.80%	323.00	11.29	0.36	16.30	7.48	0.30	0.48	0.04	11.28	0.64
DOUG	26.62	0.13	82.00	427.60	19.18%	3.41%	5.77%	3.69%	177.67	29.21	1.10	14.64	3.46	1.10	0.78	0.11	3.63	1.00
ECIAD	136.32	0.14	98.85	598.35	16.52%	2.80%	6.29%	3.98%	111.13	41.81	0.31	14.31	2.50	0.19	0.73	0.06	6.41	1.00
JI	11.30	0.06	50.81	228.68	22.22%	4.07%	8.84%	1.48%	395.56	2.87	0.25	79.63	1.19	0.19	0.23	0.02	7.22	1.00
KW	21.02	0.10	97.59	445.29	21.91%	3.74%	5.46%	4.09%	188.05	8.24	0.39	54.04	3.17	0.91	0.57	0.09	5.51	0.76
LC	16.05	0.05	37.38	345.68	10.81%	2.67%	3.06%	5.35%	228.62	11.38	0.71	30.37	2.23	0.62	0.75	0.07	2.38	1.00
MAL	40.36	0.10	127.53	380.75	33.49%	3.42%	19.51%	3.50%	233.62	19.42	0.48	19.60	3.22	0.48	1.09	0.12	6.29	0.76
NI	16.94	0.14	40.06	253.22	15.82%	3.79%	4.74%	2.14%	247.39	5.58	0.33	45.37	1.85	0.24	0.59	0.10	18.39	1.00
NL	35.77	0.14	71.83	365.49	19.65%	3.05%	10.13%	1.81%	214.96	5.02	0.14	72.83	6.37	0.28	0.61	0.09	24.78	0.66
NW	42.23	0.13	59.80	367.60	16.27%	2.63%	2.88%	2.89%	235.10	8.58	0.20	42.84	0.00	0.52	0.57	0.06	17.68	0.39
OC	19.10	0.09	160.57	398.74	40.27%	4.96%	6.79%	3.25%	212.46	4.93	0.26	80.86	2.12	0.68	0.32	0.05	9.60	0.20
QUC	60.12	0.96	2573.33	4759.71	54.06%	2.80%	11.21%	#DIV/0!	30.00	5.21	0.09	912.99	16.65	1.60	11.40	1.81	25.60	1.00
RR	25.34	0.07	224.45	697.87	32.16%	1.17%	20.35%	2.85%	108.02	3.52	0.14	198.35	2.09	0.49	0.93	0.08	4.31	0.76
SEL	38.44	0.16	48.82	285.95	17.07%	9.30%	3.94%	2.25%	279.22	6.76	0.18	42.29	2.87	0.40	0.61	0.06	11.53	0.90
SFU	177.49	0.32	444.63	929.00	47.86%	8.21%	20.68%	3.67%	123.23	30.65	0.17	30.31	6.08	1.03	0.95	0.08	1.41	0.88
TRU	34.59	0.10	136.83	345.76	39.57%	6.91%	19.52%	1.97%	319.18	14.79	0.43	23.38	2.12	0.45	0.39	0.03	5.63	0.80
TWU	165.84	0.39	235.35	584.31	40.28%	4.55%	9.08%	#DIV/0!	108.89	57.53	0.35	10.16	2.19	0.72	1.62	0.16	4.37	0.72
UBC	293.10	0.43	382.60	913.37	41.89%	9.12%	21.59%	5.12%	126.72	69.18	0.24	13.20	4.96	0.75	1.31	0.12	3.39	0.87
UCFV	33.31	0.11	129.70	391.35	33.14%	6.97%	16.69%	3.28%	247.13	18.64	0.56	21.00	2.33	0.99	0.57	0.05	6.68	0.96
UNBC	101.76	0.28	472.16	961.87	49.09%	12.49%	28.43%	4.89%	120.06	16.23	0.16	59.28	1.91	0.66	1.43	0.18	3.71	0.61
UVIC	290.41	0.33	403.41	999.29	40.37%	5.12%	22.22%	5.93%	94.81	27.72	0.10	36.05	3.47	0.53	1.36	0.10	0.61	0.90
VCC	15.33	0.05	39.99	324.00	12.34%	1.28%	3.55%	2.75%	221.44	14.50	0.95	22.34	3.66	0.63	0.31	0.04	3.53	0.89

**CPSLD LIBRARY SURVEY 2007-2008  
EXPLANATORY NOTES**

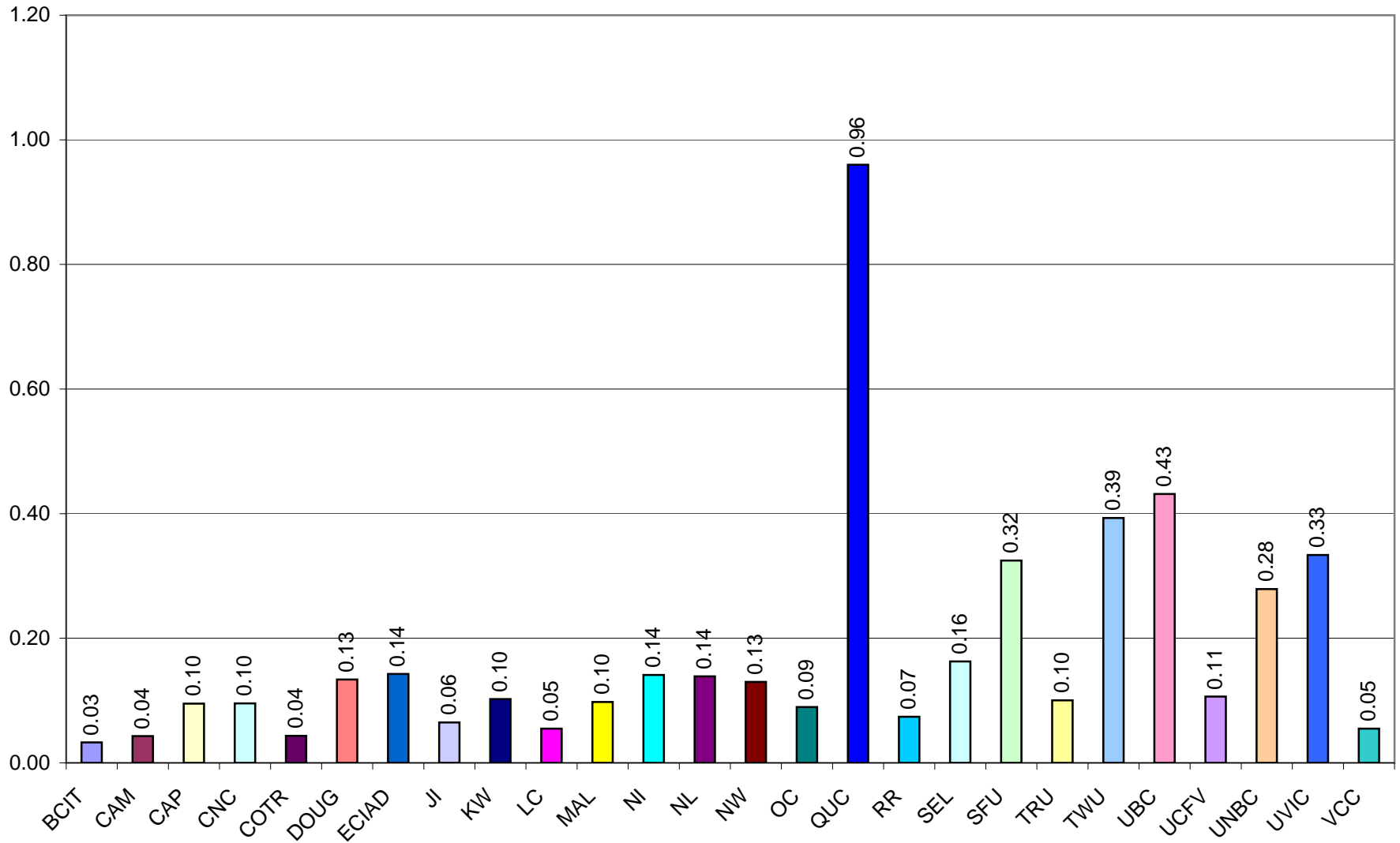
Library	Notes
CAP	6.USE (d) Direct: in previous years, these stas erroneously included all circulation activity (checkin, checkout, renewals, holds, recalls and ILLs)
ECIAD	Total FTE for the Institute may have been erroneously reported as Faculty FTE in 2006-2007.
KW	Please note that the person who answered the FTE Librarians, staff, aides and Faculty questions for the last several years retired a while ago and the person who took over is still away, so another person at HR kindly agreed to provide these numbers to the best of her knowledge. She ran the reports for July 1 (instead of March 31), but at this point I thought it better to just mention this to you rather than ask her to redo them. Let me know if this is NOT ok, and I will submit any possible changes once the "regular" person is back. Please also note that she could only provide a headcount for student aides, so I calculated an approximate using the same ratio that was used last year.
LC	Correction to last year's stats. 5g Total Print Subscriptions 06/07: 344. 10a No. of public workstations 06/07: 75
UBC	3.g. FTE faculty excludes part time sessionals. 5.g. Print subscriptions: figure represents print titles de-duped (ARL def). 5.h. Electronic titles includes 45,811 e-journals and 824 e-databases. 9.e. UBCV sq.meters: figures from 2006-07. 10.a. Workstations: figures from 2006-07. 10.3. Laptop ports: figures from 2006-07. Ratios: b. Subscriptions/FTE student - this figure excludes 45,811 e-journals (de-duped). The actual serial titles per FTE student would be 1.61. f. Periodicals % of library budget. If e-journals are included, the ratio is .20.
UNBC	6.f Gate count was 4,701 on Oct. 18/07 which was an exemplar for the year.
UVIC	*ALL* - Please note that data from UVic's Law Library are unavailable for this year and was replaced with data from 2006/07. 5g - 2007-2008 Total Print Subscriptions - Print subscriptions are decreasing as electronic subscriptions are increasing 6c - 2007-2008 No. of presentations to groups - Decreases were noted across all units and were generally due to lower demand for presentations from faculty. 6f - 2007-2008 Gate Count - Slight increase in gate count is due to increased number of hours open per week. 7d - 2007-08 Print Subscriptions - Please note that the apparent decrease in print subscriptions over the 2006/07 number is due to a change in reporting for this year; the electronic serials are separated out from the print serials whereas in the past print and electronic were reported as print only. 10a - 2007-2008 # of public workstations - Decrease is due to removal of public workstations for construction of a new addition. 10d - 2007-2008 # of laptops circulated - Increase is due to increased promotion of laptop lending and increased student awareness of this service.
VCC	7 h. Science Direct Billed in same fiscal year for both 2007 & 2008 calendar year; next fiscal only for 2009 calendar year. 6 e. The first quarter was not counted correctly.

a) Volumes per FTE Student: 5(f)/3(f)

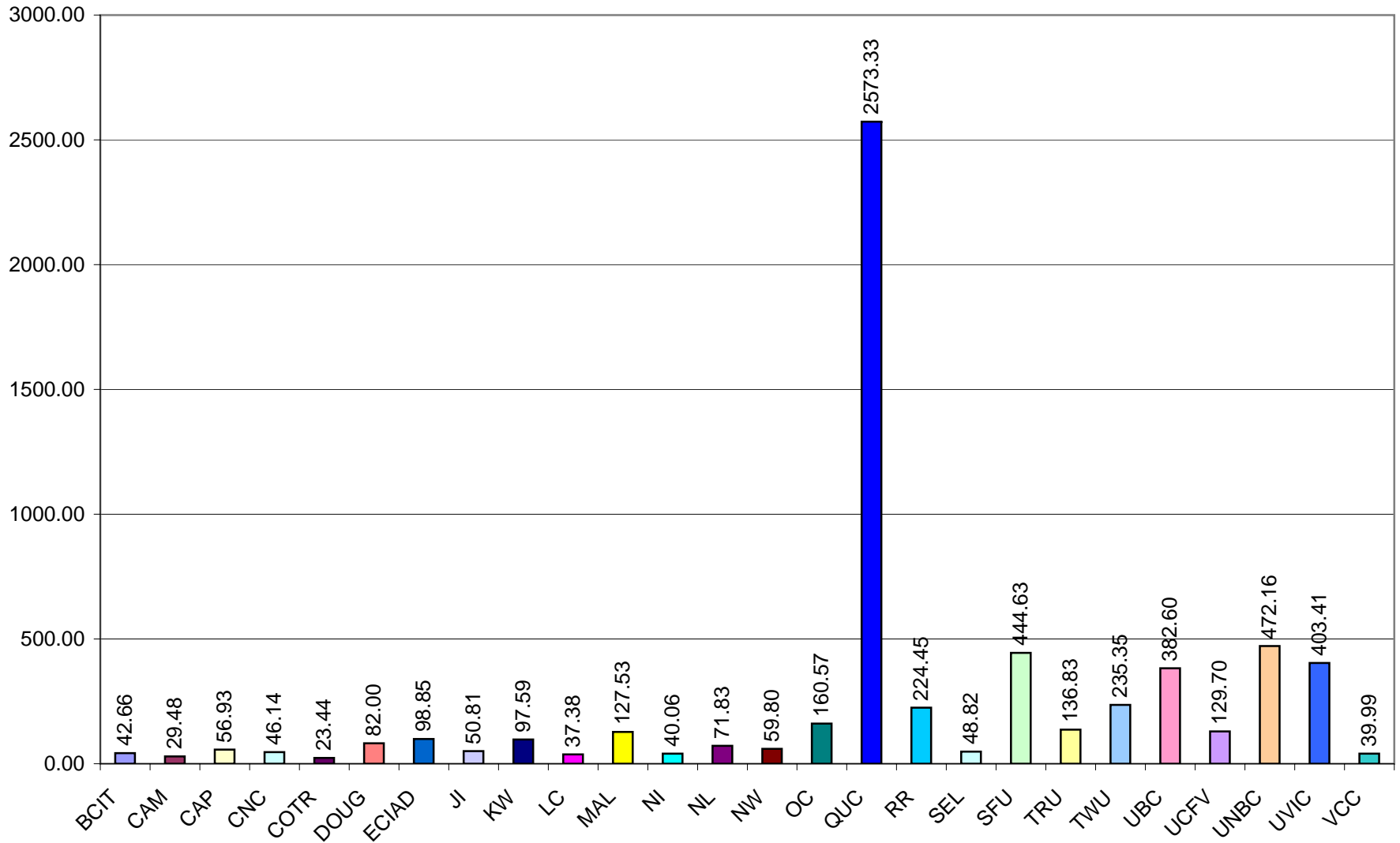




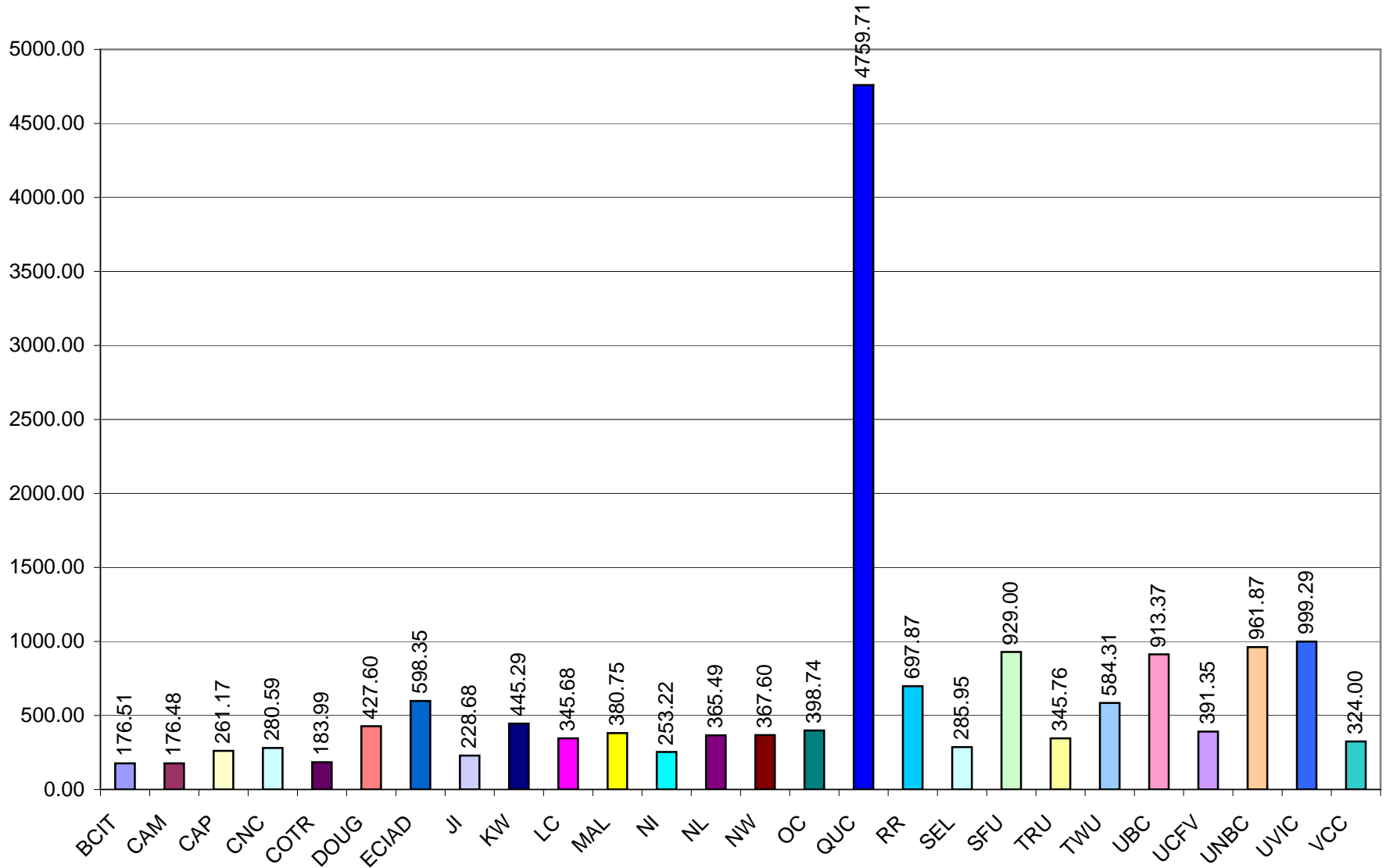
**b) Subscriptions per FTE Student: 5(g)/3(f)**



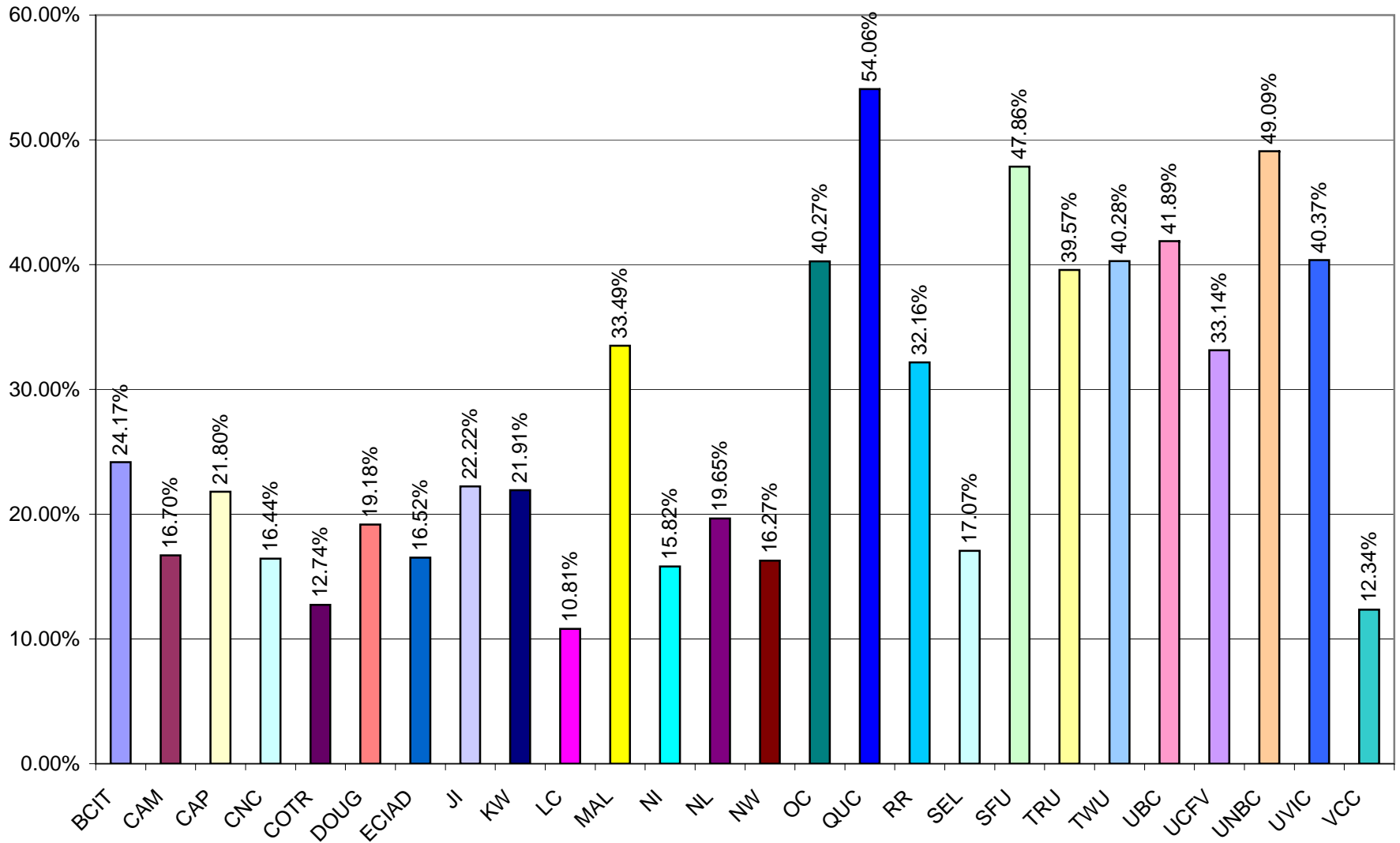
c) Collection Expenditures per FTE Student: 7(j)/3(f)



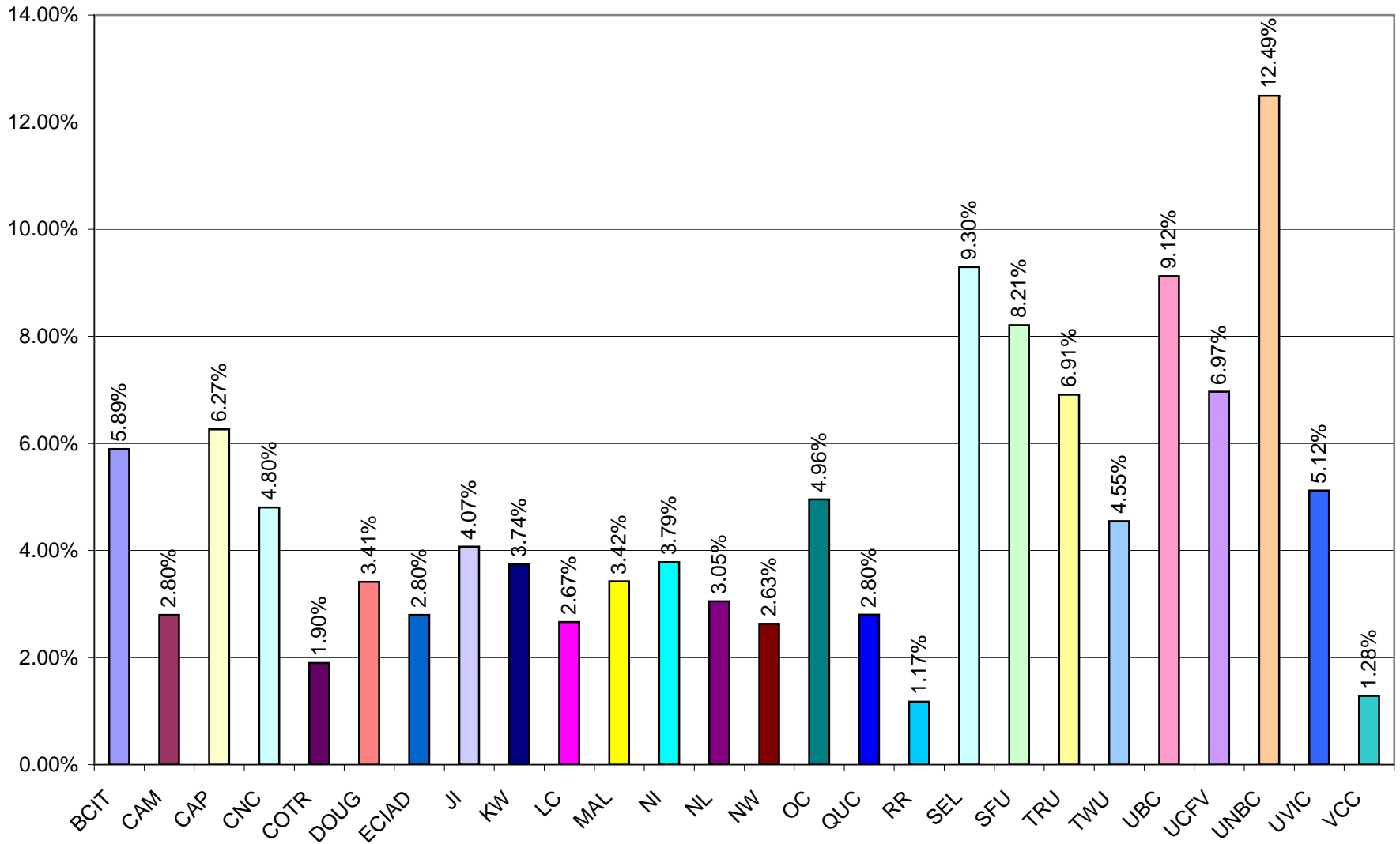
**d) Library Expenditures per FTE Student: 7(l)/3(f)**



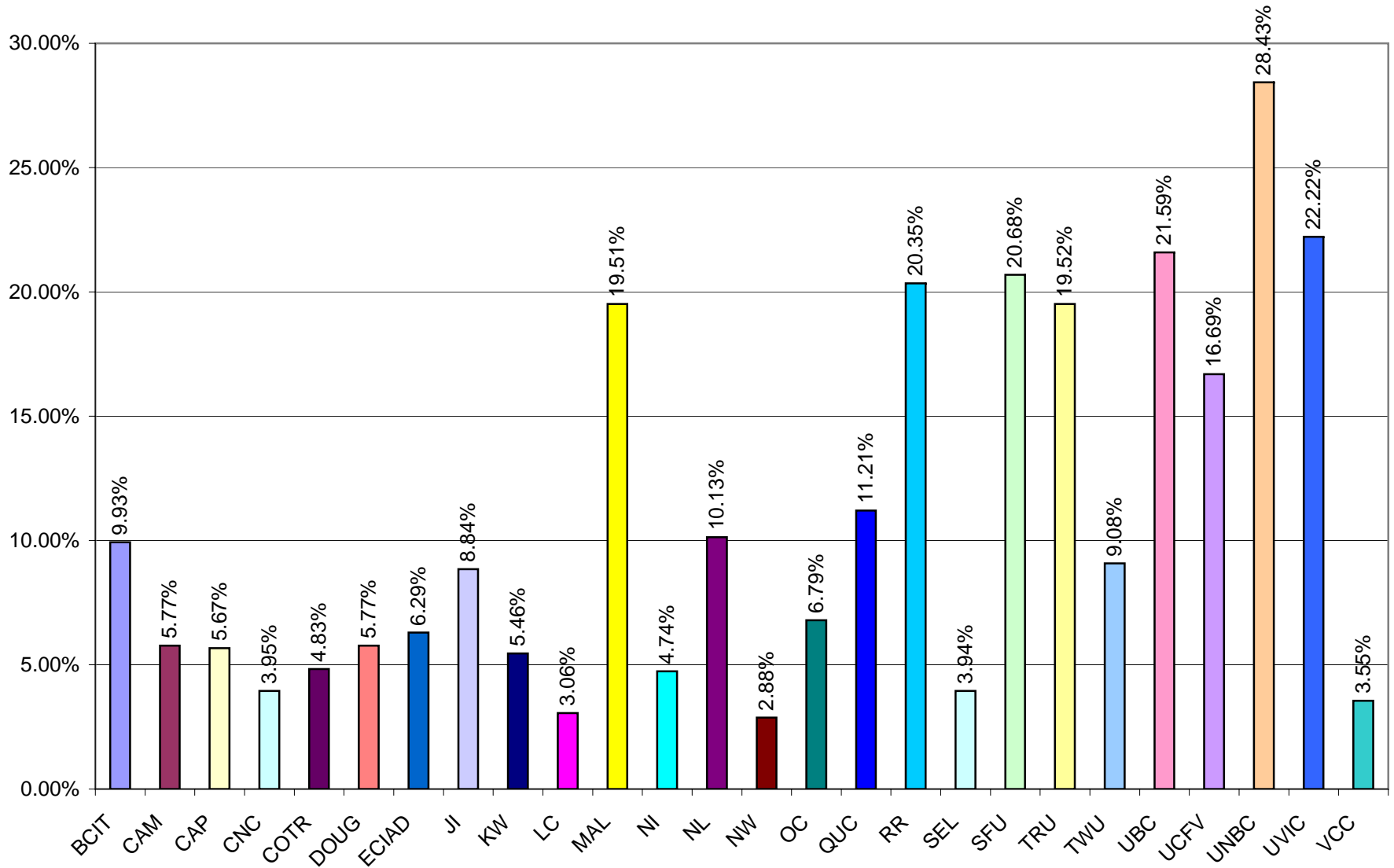
e) Collection Expenditures as % of Library Expenditures: 7(j)/7(l)



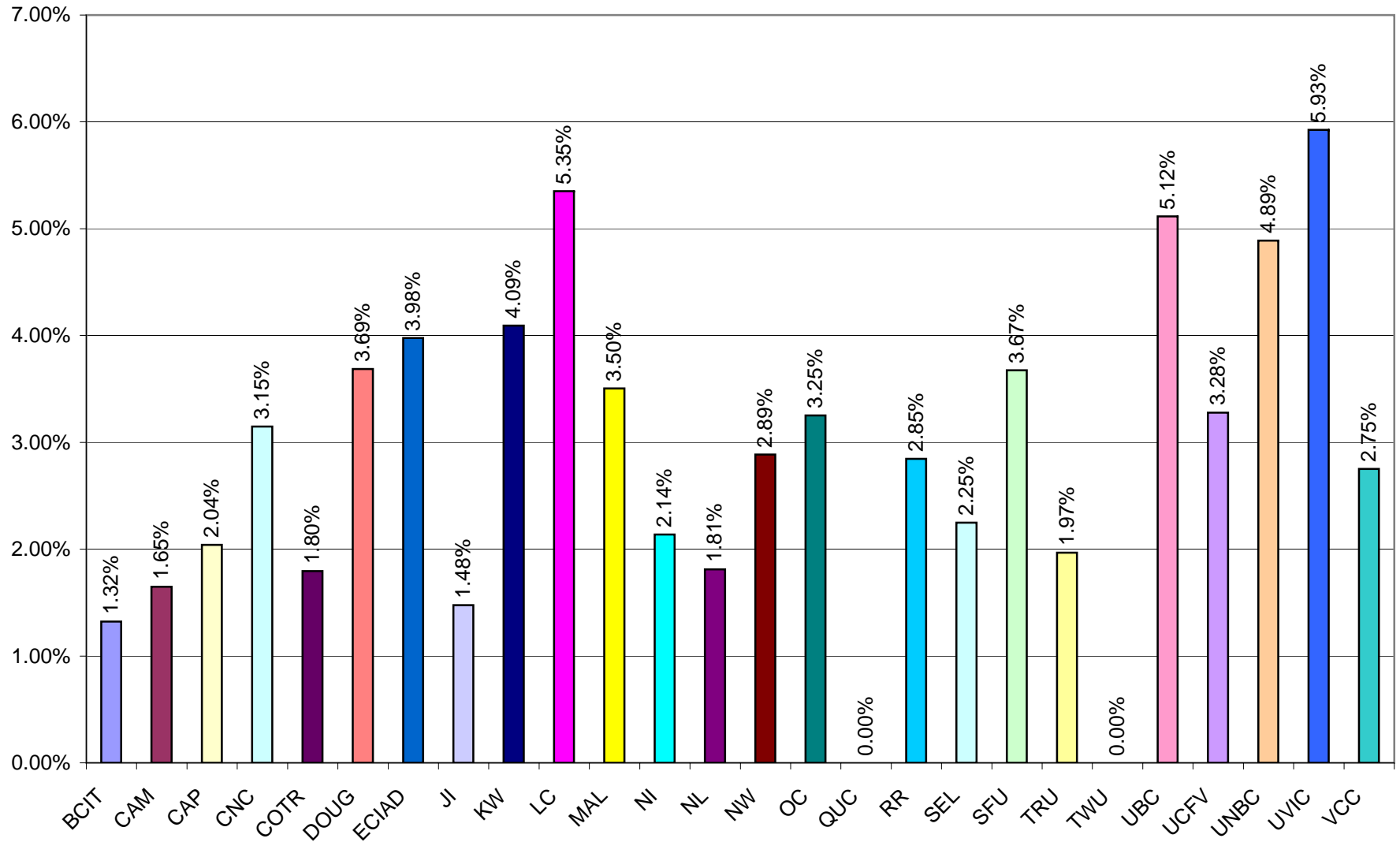
f) Periodicals as % of Library Expenditures: 7(d)/7(l)



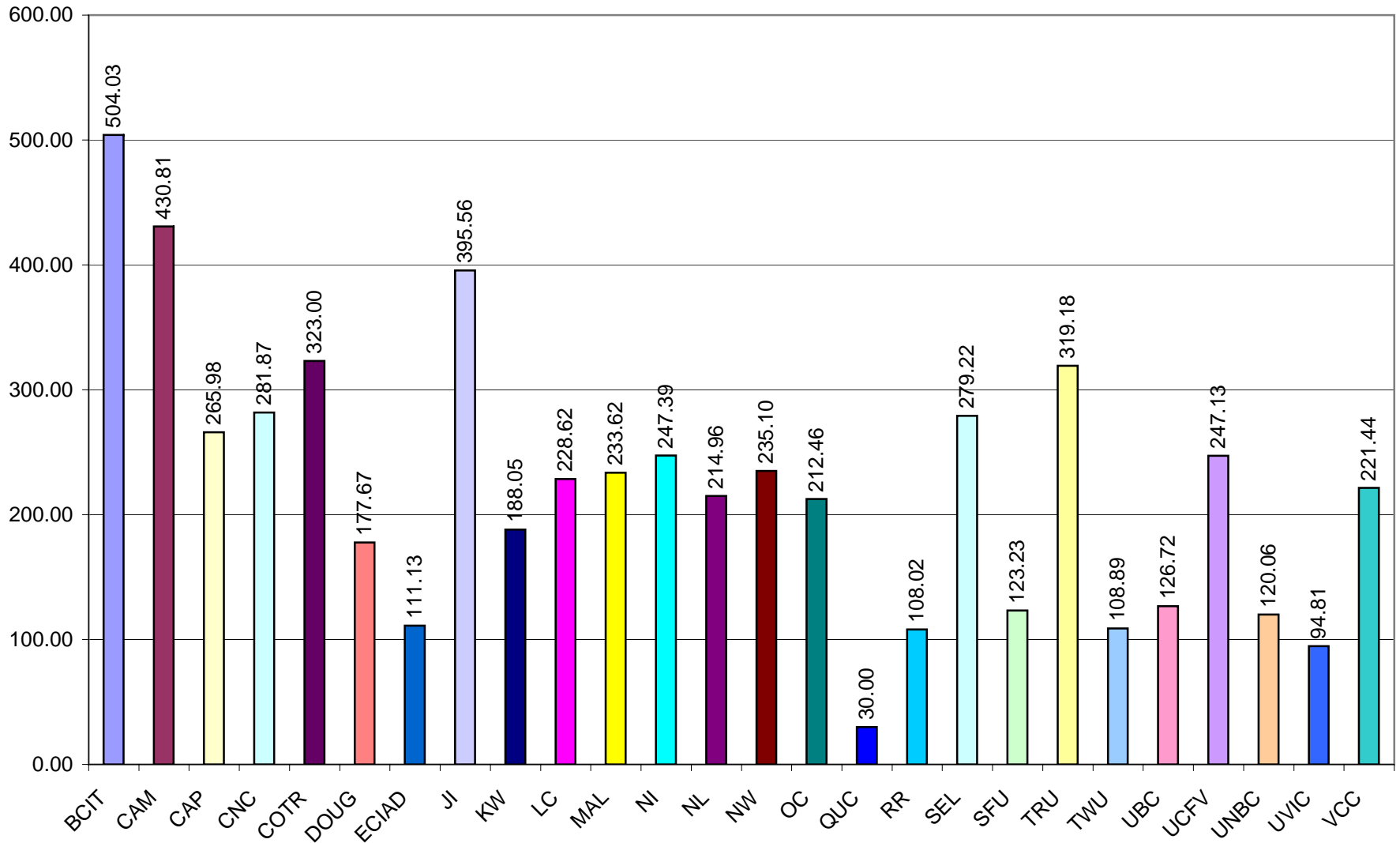
**g) Electronic Services as % of Library Expenditures: 7(i)/7(l)**



### h) Library Expenditures as % of Institutional Budget: 7(l)/8(c)

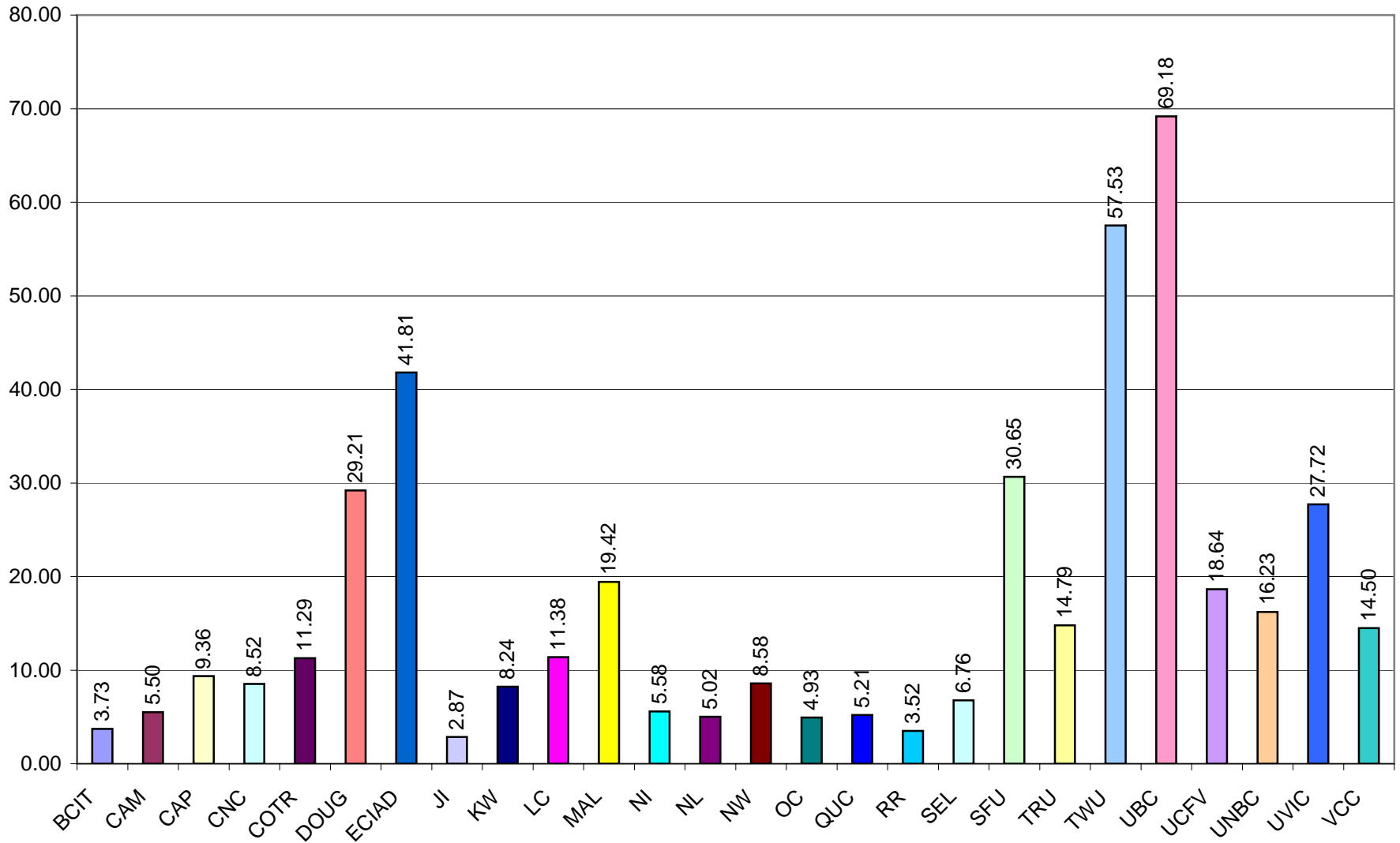


**i) FTE Students per FTE Library Personnel: 3(f)/4(f)**

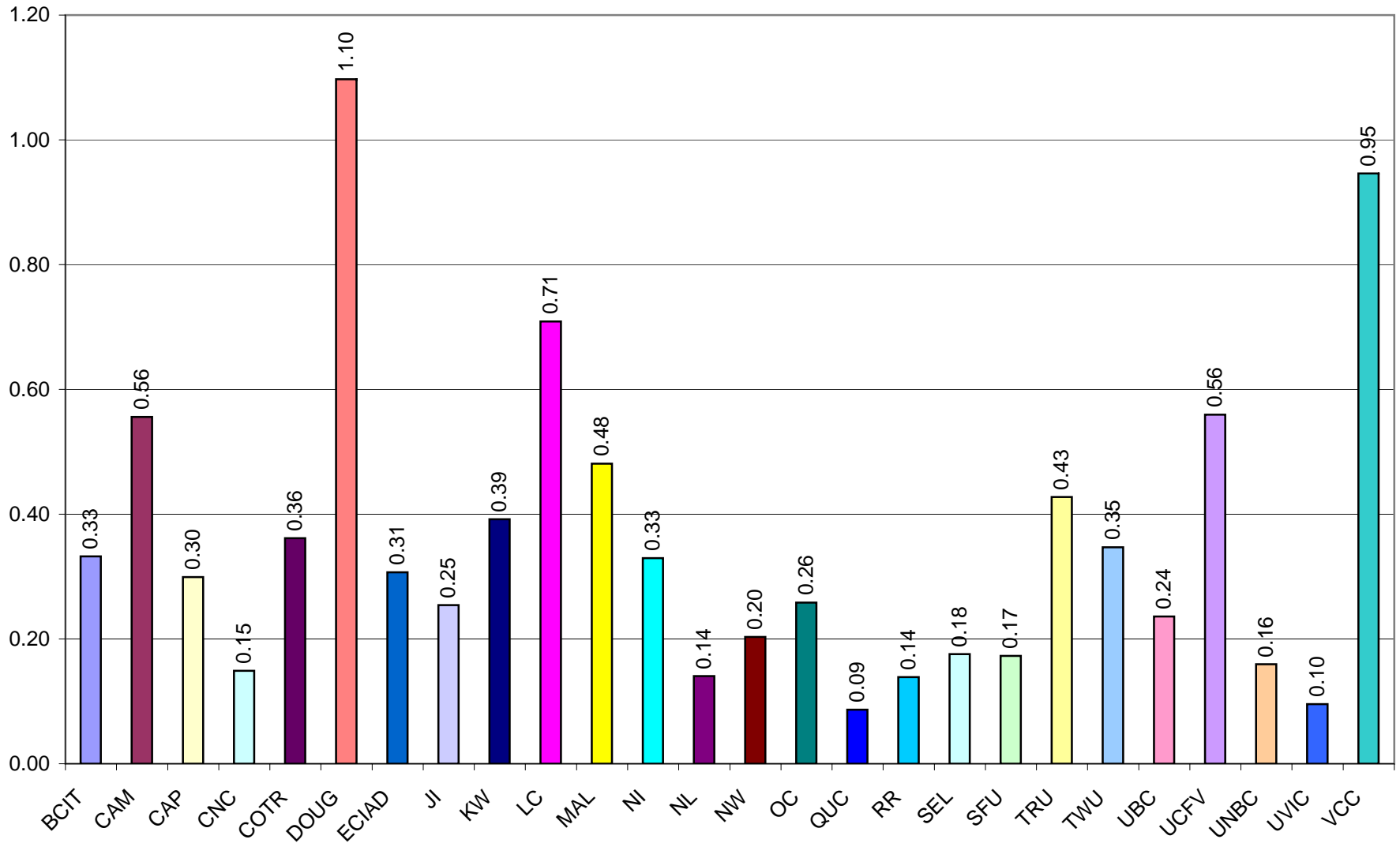




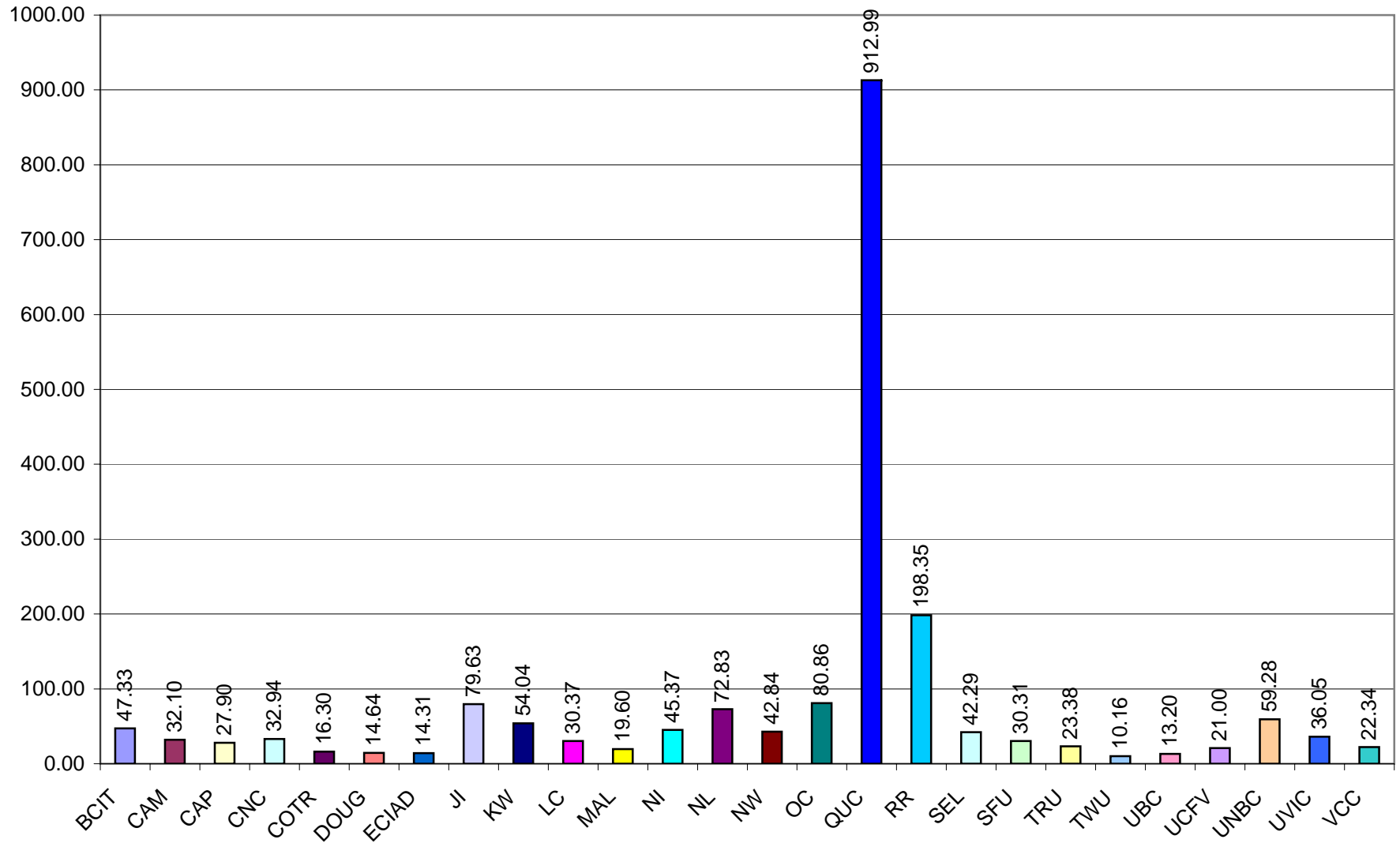
**j) Direct Circulation per FTE Student: 6(d)/3(f)**



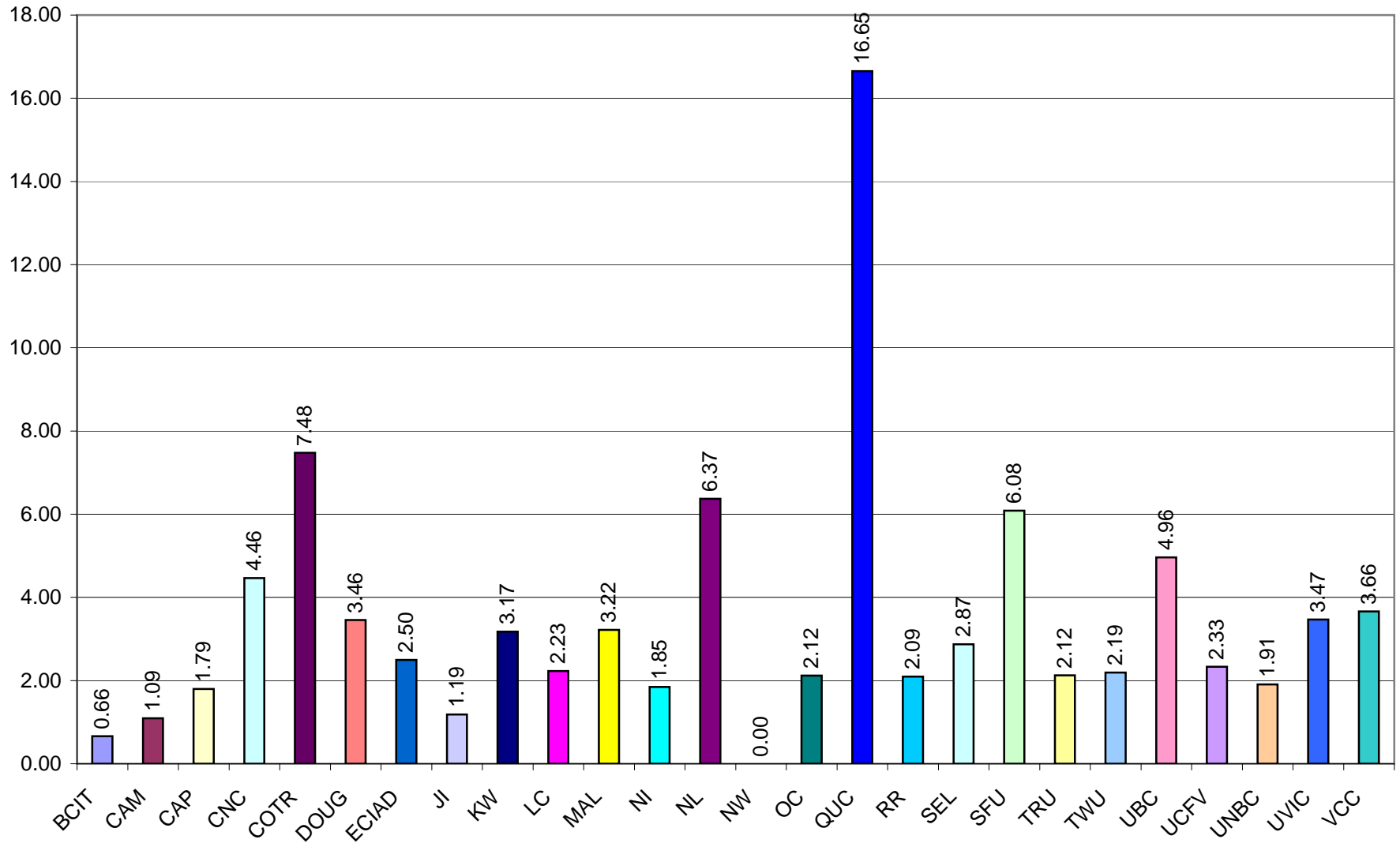
k) Direct Circulation per Total Volumes: 6(d)/5(f)



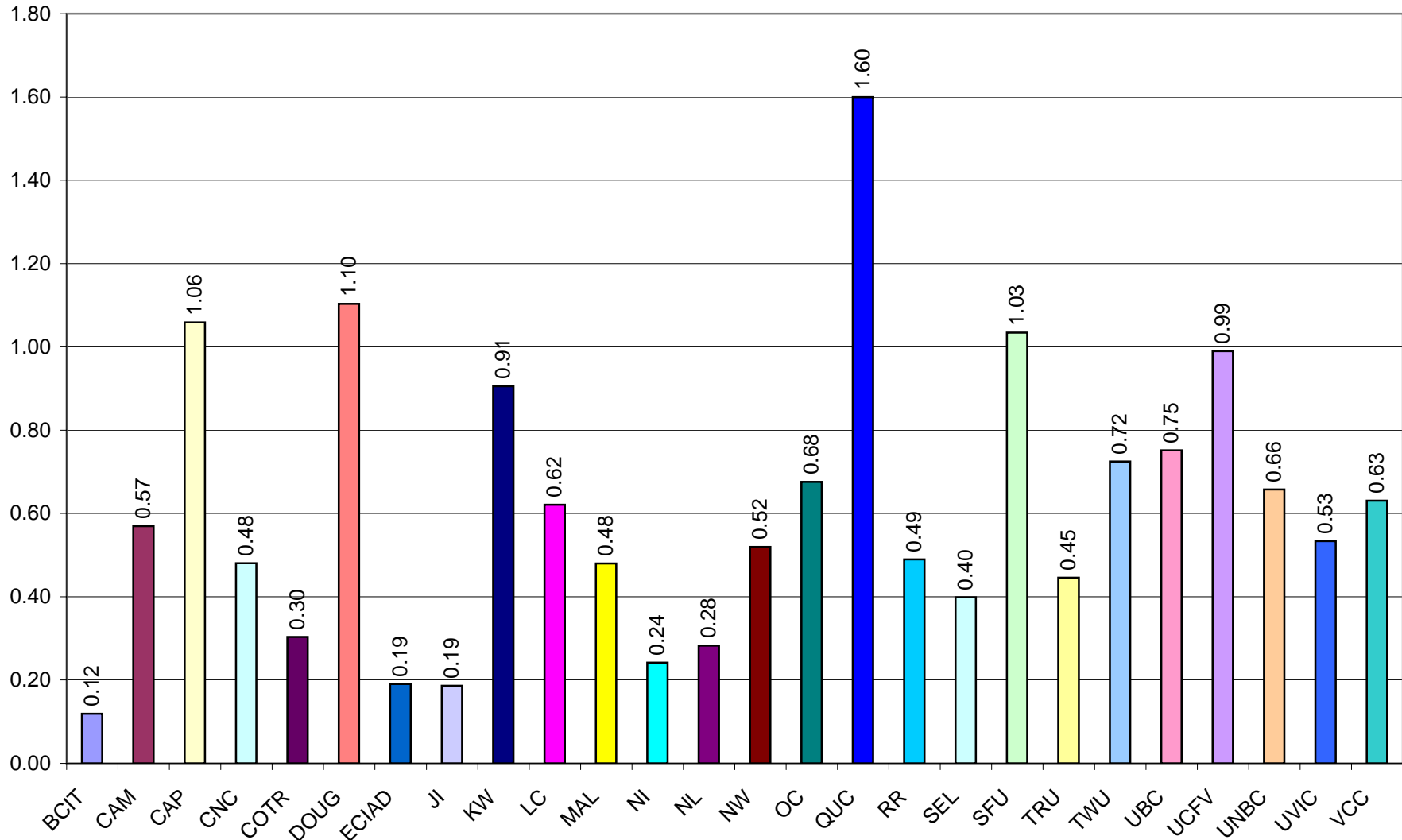
I) Total Library Expenditures per Circulation: 7(l)/6(d)



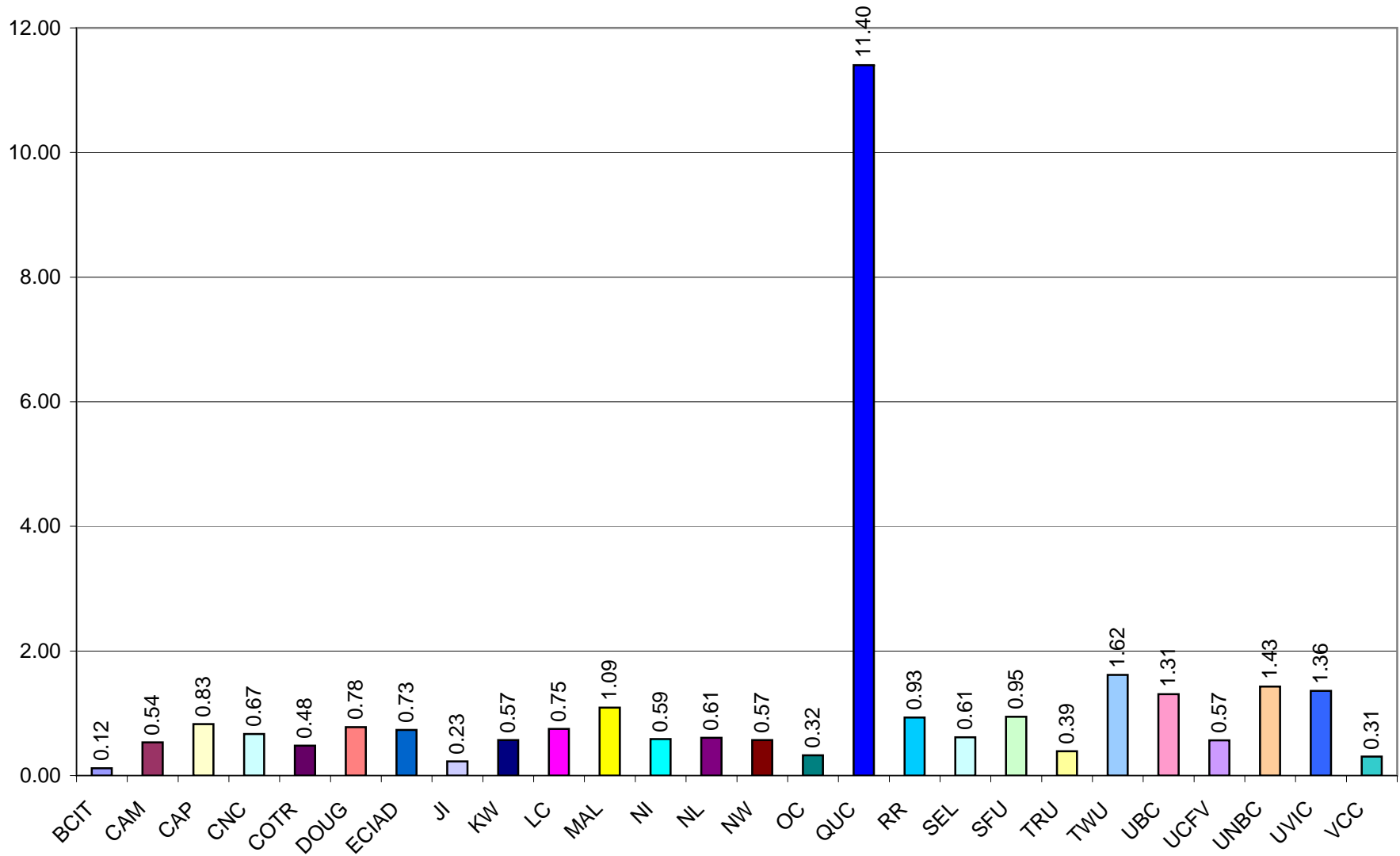
m) Reference Transactions per FTE Student: 6a(iii)/3(f)



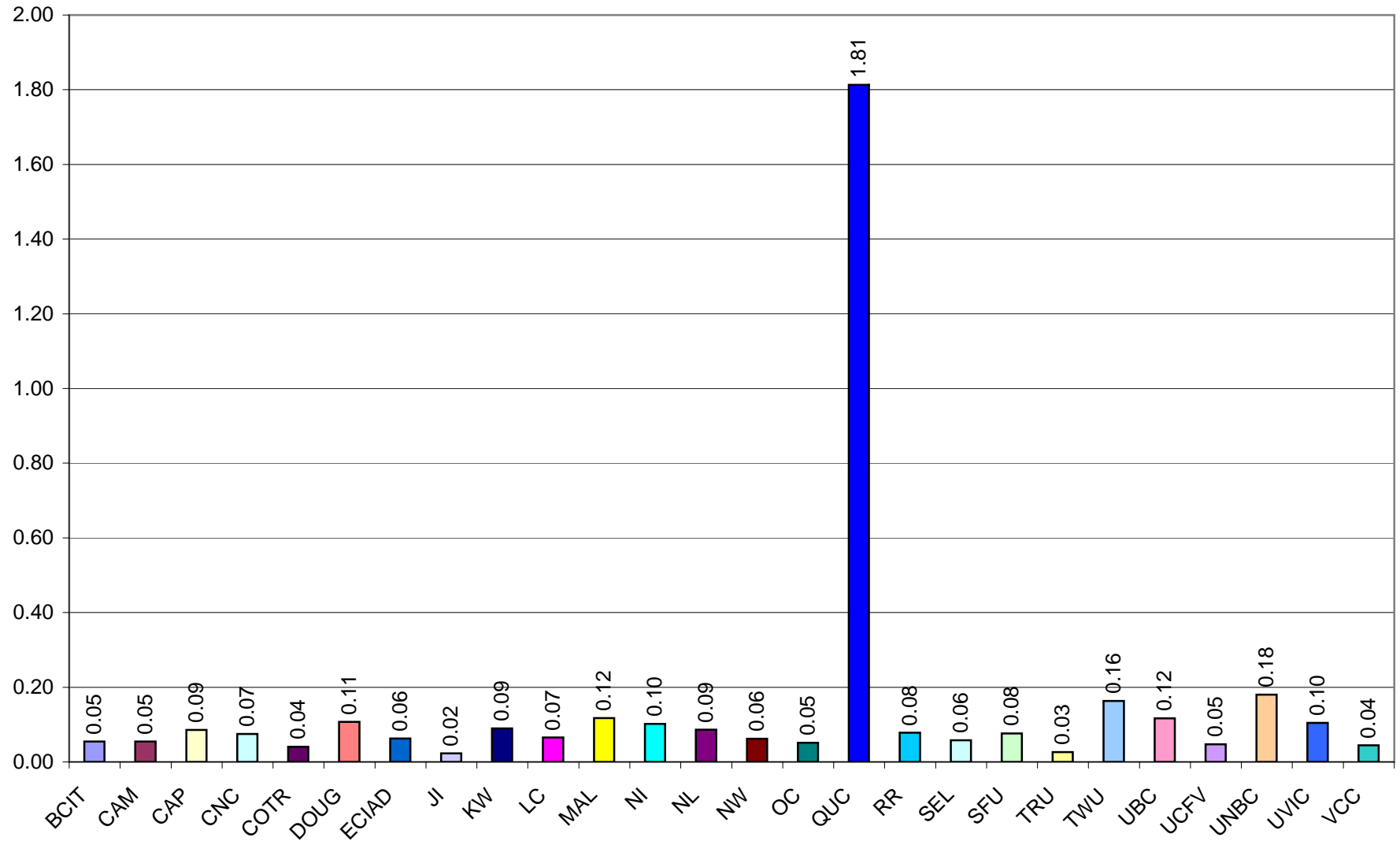
n) Number of Students Instructed per FTE Student: 6(b)/3(f)



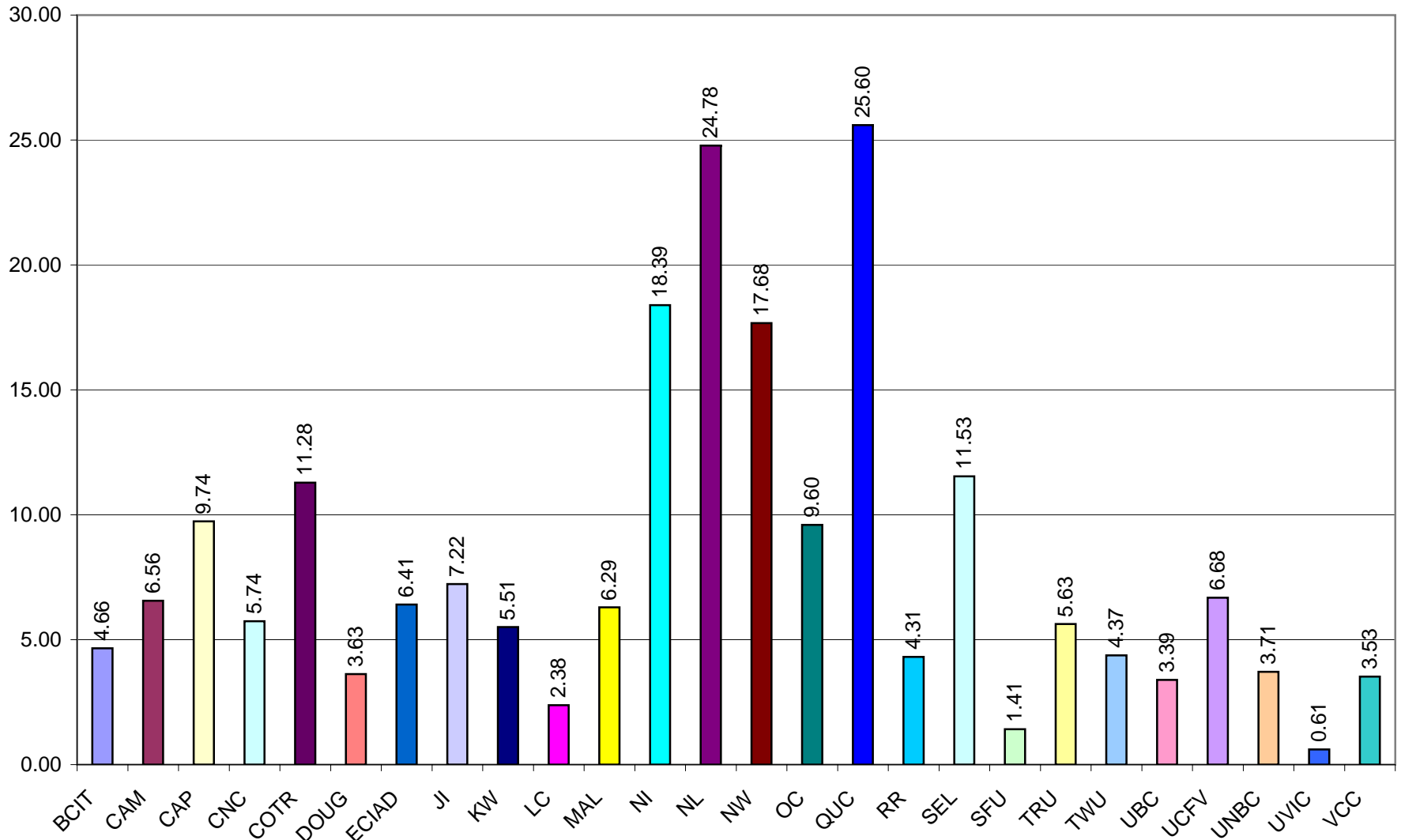
**o) Total Library Area per FTE Student: 9(e) total/3(f)**



p) Number of Seats per FTE Student: 9(f) total/3(f)



q) Hours Open per FTE Personnel: 9(g) total/4(f)





r) Reference Hours per Total Open Hour: 9(h) total/9(g)

