

CPSLD Statistics Report

2008 - 2009

Created by:
Vancouver Community College
Library and Learning Resources

ACKNOWLEDGEMENTS

On behalf of CPSLD members, I would like to commend and thank Corinna Luk for her time, expertise and ongoing commitment to the completion of the Annual CPSLD Statistics Report.

I would also like to acknowledge the help of Stephanie Leskiw Coordinator, PSI Funding, Funding and Analysis Branch, Ministry of Advanced Education who provided us with FTE statistics

Lila Heilbrunn
Director, Library and Learning Resources
Vancouver Community College
CPSLD Statistics Compiler, 2009

CPSLD STATISTICS REPORT
2008/2009

COUNCIL OF POST-SECONDARY LIBRARY DIRECTORS OF B.C.
LIBRARY/LEARNING RESOURCES CENTRE SURVEY

DEFINITIONS	PAGE 1 to 7
SURVEY	PAGE 1 to 4
LEGEND	PAGE 1
DATA	PAGE 25
RATIOS	PAGE 26
NOTES	PAGE 27
GRAPHS	PAGE 28 to 45

COUNCIL OF POST-SECONDARY LIBRARY DIRECTORS B.C. LIBRARY/LEARNING RESOURCE CENTRE SURVEY

DEFINITIONS (Rev. June 9, 2009)

INTRODUCTION

This annual statistical survey is intended to provide a picture of the holdings and activities of Libraries in colleges, university/colleges, institutes, and universities of British Columbia for the fiscal year (**April 1 - March 31**). All information is based on the total count for one year.

The following activity, although under library jurisdiction in many institutions, is **excluded** from this report:

- audio-visual equipment distribution to classrooms
- audio-visual equipment maintenance
- Media production or instructional media services.

A word of caution:

Comparison among institutions should be made with the understanding that each library operates somewhat differently and counts activities within a context unique to the institution. In addition, as access to electronic information becomes more important, holdings information is not always readily quantifiable or entirely meaningful and expenditure information is not found within the same budget categories in each institutional library.

Note: Do not add text into any field that will be totalled automatically as this will prevent the system from performing this addition.

Note: use the "Explanatory Notes" section at the bottom of the survey to provide additional information or any variations from the norm.

1. TYPE OF LIBRARY

Self explanatory.

2. NUMBER OF CAMPUSES

Differentiate between those centres which have library staffing from those which are characterized as reading rooms and/or learning centres which have no staff or may have staff paid for by other parts of the institution.

- a. Number of campuses **with** library staff
- b. Number of campuses **without** library staff

3. USERS

FTE students:

NOTE – for sections a - f, this data will be completed for you based on data supplied by the Ministry of Advanced Education

g.FTE faculty:

- Provide FTE (not head count) of faculty employees (include librarians if applicable); approximate if actual number is not available;

Community Borrower Fee:

- Do not include the number of community borrowers as this figure does not represent active users for many institutions; provide only the annual fee if applicable.

h. Is there a community borrowers fee?

i. Fee \$

4. LIBRARY PERSONNEL

- Count all personnel in FTE terms (not head-counts);

a. FTE librarians:

- include all part-time and contract librarian hours;
- include Library Director whether this is an administrative position or not;
- include any positions funded by special grants or university-college access funds;

b. FTE library staff:

- exclude personnel who are entirely devoted to AV equipment and media production/IMS activities;

c. FTE other professionals

- **Include staff who are not librarians in the strict sense of the terms such as computer experts, systems analysts or budget officers.**

d. Subtotal – FTE Library Personnel: (system will total automatically)

- provide subtotal of personnel before counting student aides and work-study employees;

e. FTE student aides:

- include student aides and work-study employees

f. Total FTE Library Personnel: (system will total automatically)

5. COLLECTIONS

- **Volumes:** items that are barcoded separately or intended to be circulated as one unit, (e.g. a 20-volume set of encyclopedias = 20 units, 2 CDs plus booklet in one package = 1 unit; book plus CD = 1 unit; set of slides in a binder or a folio = 1 unit).

a. Monographs:

- a volume is a physical unit of any printed or processed work contained in one binding, encasement or other clear distinction, which has been catalogued as part of the collection and given an individual barcode;
- **include** titles in microform or CD (not individual cards of fiche except when 1 card = 1 title);
- **include** annuals;
- **exclude** periodicals;
- use explanatory notes for any unusual inclusions (e.g. documents, technical reports, individually catalogued maps).

b. Videos & Films:

- count all video & film formats;
- count physical items (e.g. 2 film reels = 2 units, series of 24 videos = 24 units);

c. Other Audio formats:

- count all sound recordings (e.g. LP records, cassette tapes, compact disks);
- count items intended to be used together as one unit (e.g. opera on 2 CDs = 1 unit);
- if two or more media are included (e.g. print and cassette tape), count as a single unit all items to be used in conjunction with each other.

d. Other Visual formats:

- count all visual formats (e.g. slides, snapshots)
- do not count individual slides unless they do not form part of a set (i.e. 1 slide set = 1 unit);
- if two or more media are included (e.g. print & slides), count as a single unit all items meant to be used in conjunction with each other.

e. Back Issues Periodicals:

- **include** journals, magazines, and newspapers received in print, microform, or CD formats;
- count volumes if they are known, otherwise 1 year = 1 volume;
- **include** annual index volumes.

f. Total Volumes in Library Collection: (system will total automatically)

- add $a + b + c + d + e = f$

Periodicals:

g. Total Current Print Subscriptions:

- count titles of journals, magazines, and newspapers currently received in print, microform, or CD formats (e.g. Canadian Newdisc = 8 titles);
- **exclude** annuals (counted in **a**) above);
- **include** gift subscriptions and those being received on exchange;
- **include** departmental subscriptions only if they are accessible to the college community (i.e. listed in library catalogue and available for use);
- count duplicate subscriptions (i.e. if the library subscribes to two copies of a title count 2);
- **include** Statistics Canada periodicals if they are treated like a periodical;
- **exclude** subscriptions to electronic periodical indexes and abstracts (expenditures information only required in **7.** below).

Electronic Titles

h. Catalogued Electronic Titles

- **Include** all purchased e-books, NetLibrary, e-journal titles purchased independently (i.e. not included in database subscriptions) and free catalogued websites, e-texts and e-journals
- use explanatory notes for any unusual inclusions (*confusion re classed serials counted as monographs or serials*)

6. USE

a. Reference transactions:

An information contact that involves the knowledge, use, recommendations, interpretation or instruction in the use of one or more information sources by a member of the library staff. Information sources include printed and non-printed materials, machine-readable databases (including computer-assisted instruction), catalogues and other holdings, records and, through communication or referral, other libraries and institution, and persons both inside and outside the library. Include information and referral services. If a contact includes both reference and directional services, it should be reported as one reference transaction. When a staff member utilizes information gained from a previous use of information sources to answer a question, report as a reference transaction, even if the source is not consulted again during this transaction. Duration should not be an element in determining whether a transaction is a reference transaction. Sampling of a typical week may be used to extrapolate for a full year) CARL definition.

- count all questions handled (i.e. regular, and extended reference questions);
- **include** questions associated with electronic searching;
- **include** electronic reference questions
- **include** real-time-reference interactions (i.e. virtual reference)
- **exclude** questions associated specifically with a bibliographic instruction class.
- Exclude directional questions as these will be counted separately

This is the way this question will appear on the stats collection form

- 6a (i) Reference questions
- 6a (ii) Directional questions
- 6a (iii) Total

Library Instruction

b. Number of participants at group presentations:

- Report total number of participants in the presentations - count all students receiving bibliographic instruction whether in tutorial groups, tours, or library skills classes
- Personal one-on-one instruction in the use of sources should be counted as a reference transaction

c. Presentations to groups

- **Number of presentations to groups** - Report the total number of library instruction sessions during the year. Count sessions presented as part of formal bibliographic instruction programs including class presentations, orientation sessions and tours. If the library sponsors multi-session credit courses that meet several times over the course of a semester, each session should be counted. Presentations both on and off the premises should be included when they are sponsored by the library. If you are using sampling, please include a footnote
- **include** internet research or database searching classes;
- **include** classes taught to faculty and other employee groups.

Circulation:

d. Direct:

- count all items which are charged out for use, whether the use is inside (e.g. reserve) or outside the library;
- **include** self/online renewals
- **exclude** items charged out to other libraries on interlibrary loan (included in **g**) below).

e. In-library use:

- count those items being used in the library and re-shelved by library employees, but that have not been charged out for use in the direct circulation transaction.

f. Gate Count

- Count all traffic upon exit from the library (usually provided via an electric eye on the library security system)

Interlibrary loan:

- count all items actually received and sent via interlibrary loan;
- **include** items received or sent via any delivery method and from or to any type of library (including agencies with library holdings) in any part of the world;
- all NET, MEC, OJAC, and fileserver project figures are supplied by the ELN office;
- **exclude** intercampus loans within your institution.

g. Interlibrary loans received (include all formats)

h. Interlibrary loans sent (include all formats)

7. LIBRARY EXPENDITURES (capital & operating)

For purposes of consistency “expenditures” means actual expenditures vs budgeted expenditures.

a. Personnel (salaries & benefits):

- count all salary & benefit expenditures for library personnel as listed in **4** above;
- **exclude** personnel not covered by this survey (e.g. AV equipment distribution, Media Production or IMS);
- **include** personnel working under special grant funding or university-college access funding.

Collections:

b. Monographs:

- count all expenditures on items listed as monographs in **5a** above;

c. Audio-Visual:

- count all expenditures on items listed in **5b +5c + 5d** above:

d. Current Print Periodicals:

- count all expenditures on current subscriptions to print periodicals and indexes as included in **5g** above.

e. Special Funding Envelopes for Collections

- **Include** all expenditures from special funding sources e.g. one time capital grants

f. Subtotal Collections: (system will total automatically)

- $b + c + d + e = f$

Electronic Materials:

g. ELN services:

- count all expenditures as a partner library to ELN subscription services.

h. Non-ELN subscriptions:

- count all expenditures on electronic subscription services (index, abstract, and full-text) that are not provided through the ELN service;
- **exclude** subscriptions which are included in **7d** above;
- **include** expenditures on databases (e.g. Wilson Indexes) if they are negotiated through your library and mounted on your local system.

i. Subtotal Electronic Products (system will total automatically)

- $g + h = i$

j. Total Collections Expenditures: (system will total automatically)

- $f + i = j$

k. Other:

- count all other library expenditures (i.e. those expenditures that are not related to personnel and collections);
- **include** only those other costs (e.g. printing, postage, interlibrary loans, mileage, conferences, supplies, etc.) if they are paid by the library's budget;
- use explanatory notes to indicate any variations from the norm.

l. Total Library Expenditures: (system will total automatically)

- ii. $a + j + k$

8. INSTITUTIONAL BUDGET

- a. **base ministry grant** as outlined in the grant allocation sent by the ministry to each institution in March (usually) for the next fiscal year;

b. Other operating funds

- **include** all items that are considered in calculating your institution's operating budget;
- **exclude** institutional capital (i.e. new building funds, upgrading of present buildings, roads etc.)
- use explanatory notes to provide details on any exceptions or variations from the norm.
-

c. Total Institutional Budget: (system will total automatically)

- $a + b$

9. FACILITIES & HOURS (system will tally automatically for all sections)

e. Total library area in square meters

- for each campus with library personnel provide library area in square meters (to convert from square ft. to square meters multiply sq. ft. by .0929, e.g. 30,000 sq. ft. x .0929 = 2787 sq. meters);
- **include** space for books and other library materials, space for storage of AV equipment if control of this equipment is the library's responsibility, library classrooms, study stations, seminar and study rooms, and workspace for library personnel;
- **exclude** areas used solely for janitorial, custodial and mechanical storage or services, lobbies, vestibules, building corridors, and other general access areas;
- add figures for each library to provide total for **e**.

f. Total number of seats:

- for each campus with library personnel count all study spaces for library users;
- **exclude** seats in staff areas, offices, meeting rooms, and other areas not normally occupied by users of library materials;
- add figures for each library to provide total for **f**.

g. Total hours open per week: (September – April)

- for each campus with library personnel count total operating hours per week;
- add figures for each library to provide total for **g**.

h. Total reference hours per week: (September – April)

- for each campus with library personnel count total hours of reference service provided;
- add figures for each library to provide total for **h**.

10. COMPUTING INFRASTRUCTURE

- a. Number of public workstations
 - For each campus library, count all public workstations that have Internet access
- b. Wireless available in each library? Y/N (use notes for clarification)
- c. Number of laptops available for borrowing from library
- d. Number of times laptops circulated from library
- e. Number of laptop ports/docking stations available for each campus library
- f. Mobile devices other than laptops supported by library? Y/N if Y, please clarify

11. LIBRARY AUTOMATED SYSTEMS

- self explanatory;
- use explanatory notes for any variations.

CPSLD Statistics 2008-2009

LIBRARY/LEARNING RESOURCE CENTRE SURVEY

Fiscal Year: _____
Name of Library: _____
Name of Library Director: _____
Statistics contact: _____

see definitions

1. Type of Library:

College Institute University University College

2. Number of Campuses

(a) with Library Staff: _____
(b) without Library Staff: _____

3. USERS

NOTE - for sections a - f, this data will be completed for you based on data supplied by the Ministry of Advanced Education

(a) FTE AVED Ministry funded: _____
(b) FTE students (audited): _____
(c) ITA (Foundation + Apprenticeship) Funded: _____
(d) ITA (Foundation + Apprenticeship) Actual: _____

(e) Service Plan Total Funded (a + c) (auto calculated): _____

(f) Service Plan Total Actual (b+d) (auto calculated): _____

(g) FTE faculty: _____
(h) Is there an annual fee for Community Borrowers? Yes No
(i) Fee \$: _____

4. LIBRARY PERSONNEL

(a) FTE Librarians (including Director): _____
(b) FTE Library Staff: _____
(c) FTE Other Professionals: _____
(d) FTE Personnel (a+b+c) (auto calculated): _____
(e) FTE Student Aides: _____
(f) Total Personnel in FTE (d+e) (auto calculated) _____

5. COLLECTIONS (see definitions)

(a) Monographs: _____
(b) Videos and Films: _____
(c) Other Audio Formats: _____
(d) Other Visual Formats: _____
(e) Back Issues Periodicals: _____
(f) Total Collection (a+b+c+d+e) (auto calculated) _____

CPSLD Statistics 2008-2009

9. FACILITIES AND HOURS:

For each staffed Library provide

Campus 1

Campus Name: _____

(a) Total area in square meters: _____

(b) Total number of seats: _____

(c) Total hours open per week: _____

(d) Total reference hours per week: _____

Campus 2

Campus Name: _____

(a) Total area in square meters: _____

(b) Total number of seats: _____

(c) Total hours open per week: _____

(d) Total reference hours per week: _____

Campus 3

Campus Name: _____

(a) Total area in square meters: _____

(b) Total number of seats: _____

(c) Total hours open per week: _____

(d) Total reference hours per week: _____

Campus 4

Campus Name: _____

(a) Total area in square meters: _____

(b) Total number of seats: _____

(c) Total hours open per week: _____

(d) Total reference hours per week: _____

(e) Total area all campuses (auto calculated): _____

(f) Total seats all campuses (auto calculated): _____

(g) Total hours all campuses (auto calculated): _____

(h) Total ref hours all campuses (auto calculated): _____

10. COMPUTING INFRASTRUCTURE

(a) No. of public workstations: _____

(b) Wireless available: _____

(c) No. of laptops available: _____

(d) No. of laptops circulated: _____

(e) No. of laptop ports _____

(f) Other Mobile devices _____

If yes, please clarify _____

 Yes No (use notes for clarification)

 Yes No

CPSLD Statistics 2008-2009

11. LIBRARY AUTOMATED SYSTEM

(Give the name of the system you have, if any)

Cataloguing

Primary source of bibliographic records

Secondary source of bibliographic records

OPAC

Periodicals Check In

Acquisitions

Interlibrary Loans

12. EXPLANATORY NOTES

LEGEND

BCIT	BRITISH COLUMBIA INSTITUTE OF TECHNOLOGY
CAM	CAMOSUN COLLEGE
CAPU	CAPILANO UNIVERSITY
CNC	COLLEGE OF NEW CALEDONIA
COTR	COLLEGE OF THE ROCKIES
DOUG	DOUGLAS COLLEGE
ECUAD	EMILY CARR UNIVERSITY OF ART AND DESIGN
JI	JUSTICE INSTITUTE OF B.C.
KPU	KWANTLEN POLYTECHNIC UNIVERSITY
LC	LANGARA COLLEGE
NI	NORTH ISLAND COLLEGE
NL	NORTHERN LIGHTS COLLEGE
NW	NORTHWEST COMMUNITY COLLEGE
OC	OKANAGAN COLLEGE
QUC	QUEST UNIVERSITY CANADA
RR	ROYAL ROADS UNIVERSITY
SEL	SELKIRK COLLEGE
SFU	SIMON FRASER UNIVERSITY
TRU	THOMPSON RIVERS UNIVERSITY
TWU	TRINITY WESTERN UNIVERSITY
UBC	UNIVERSITY OF BRITISH COLUMBIA
UFV	UNIVERSITY OF THE FRASER VALLEY
UNBC	UNIVERSITY OF NORTHERN BRITISH COLUMBIA
UVIC	UNIVERSITY OF VICTORIA
VCC	VANCOUVER COMMUNITY COLLEGE
VIU	VANCOUVER ISLAND UNIVERSITY

				1. LIBRARY	2. CAMPUS STAFF RATIO	
					a	b
	Name of Library	Name of Library Director	Statistics contact	Library Type	No. of Campuses with Library Staff	No. of Campuses without Library Staff
BCIT	BCIT	David Pepper	David Pepper	Institute	3	2
CAM	Camosun College	Sybil Harrison	Sybil Harrison	College	2	
CAPU	Capilano University	George Modenesi	George Modenesi	University	1	2
CNC	College of New Caledonia	Katherine Plett	Katherine Plett	College	5	1
COTR	College of the Rockies	Lynn Hughes	Lynn Hughes	College	1	6
DOUG	Douglas College	Carole Compton-Smith	Carole Compton-Smith	College	2	
ECUAD	Emily Carr University of Art & Design	Sheila Wallace	Sheila Wallace	University	1	
JI	Justice Institute of B.C.	April Haddad	April Haddad	Institute	1	6
KPU	Kwantlen Polytechnic University	Cathy MacDonald	Cathy MacDonald	University	4	0
LC	Langara College	Grace Makarewicz	Grace Makarewicz	College	1	n/a
NI	North Island College	Mary Anne Guenther	Mary Anne Guenther	College	4	0
NL	Northern Lights College	Janet H. Beavers	Janet H. Beavers	College	3	4
NW	Northwest Community College					
OC	Okanagan College	Laura Neame	Laura Neame	college	4	1

				1. LIBRARY	2. CAMPUS STAFF RATIO	
					a	b
	Name of Library	Name of Library Director	Statistics contact	Library Type	No. of Campuses with Library Staff	No. of Campuses without Library Staff
QUC	Quest University Canada	Venessa Wallsten	Venessa Wallsten	University	1	
RR	Royal Roads University	Rosie Croft	Rosie Croft		1	0
SEL	Selkirk College	Gregg Currie	Judy Deon	College	3	3
SFU	Simon Fraser University	Lynn Copeland	Todd Mundle	University	3	0
TRU	Thompson Rivers University	Nancy Levesque	Nancy Levesque	University	2	0
TWU	Trinity Western University	Ted Goshulak	Ted Goshulak	University	1	0
UBC	University of British Columbia	Ingrid Parent	Margaret Friesen	University	2	0
UFV	University of the Fraser Valley	Kim Isaac	Kim Isaac	University	3	1
UNBC	University of Northern British Columbia	Gohar Ashoughian	Heather Empey	Academic	1	4
UVIC	University of Victoria	Marnie Swanson	Chelsea Garside	University	1	0
VCC	Vancouver Community College	Lila Heilbrunn	Lila Heilbrunn	College	2	
VIU	Vancouver Island University	Bob Foley	Bob Foley	University	3	1

3. USERS									
	a	b	c	d	a+c=e	b+d=f	g	h	i
	FTE AVED Ministry funded	FTE Students (audited)	ITA (Foundation + Apprenticeship) Funded	ITA (Foundation + Apprenticeship) Actual	Service plan total funded	Service plan total Actual	FTE faculty	Annual fee for Community Borrowers?	FEE \$
BCIT	11,422.00	11,886.00	6,262.00	7,346.10	17,684.00	19,232.10	997.00	Yes	50
CAM	6,975.00	6,656.90	2,123.00	2,394.90	9,098.00	9,051.80	454.00	No	
CAPU	5,450.00	4,988.20	25.00	2.70	5,475.00	4,990.90	388.60	Yes	25
CNC	3,181.00	2,207.10	1,238.00	1,478.80	4,419.00	3,685.90	219.00	No	
COTR	1,668.00	1,621.00	619.00	652.30	2,287.00	2,273.30	133.19	No	
DOUG	8,141.00	7,215.60	64.00		8,205.00	7,215.60	453.00	Yes	25
ECUAD	1,355.00	1,358.50			1,355.00	1,358.50	55.00	Yes	60
JI	2,319.00	2,693.60			2,319.00	2,693.60	96.00	n/a	n/a
KPU	9,041.00	8,064.90	1,213.00	1,280.60	10,254.00	9,345.50	527.00	YES	60
LC	7,026.00	6,664.50			7,026.00	6,664.50	390.00	Y	15
NI	2,215.00	1,612.70	651.00	721.90	2,866.00	2,334.60	140.00	no	
NL	1,481.00	877.70	632.00	664.20	2,113.00	1,541.90	102.25	No	0
NW	1,761.00	1,485.90	532.00	448.50	2,293.00	1,934.40			
OC	4,600.00	4,696.90	2,326.00	2,501.50	6,926.00	7,198.40	320.00	Yes	20

3. USERS									
	a	b	c	d	a+c=e	b+d=f	g	h	i
	FTE AVED Ministry funded	FTE Students (audited)	ITA (Foundation + Apprenticeship) Funded	ITA (Foundation + Apprenticeship) Actual	Service plan total funded	Service plan total Actual	FTE faculty	Annual fee for Community Borrowers?	FEE \$
QUC		140.00				140.00	10.00		
RR	1,968.00	2,095.90			1,968.00	2,095.90	49.00	Yes	25
SEL	2,330.00	1,947.50	465.00	587.30	2,795.00	2,534.80	201.00	no	
SFU	19,464.00	21,228.60			19,464.00	21,228.60	923.38	Yes	100
TRU	8,062.00	7,233.20	1,374.00	1,433.10	9,436.00	8,666.30	477.00	Yes	Yes
TWU		2,005.00				2,005.00	125.00	Yes	60
UBC	40,187.00	40,472.20			40,187.00	40,472.20	5,833.00	Yes	120
UFV	6,251.00	6,174.30	453.00	579.00	6,704.00	6,753.30	416.30	Yes	25
UNBC	3,354.00	3,053.90			3,354.00	3,053.90	191.00	yes	25
UVIC	16,002.00	15,775.00			16,002.00	15,775.00	775.83	Yes	50
VCC	6,403.00	5,955.00	1,627.00	1,695.00	8,030.00	7,650.00	462.00	No	
VIU	6,636.00	5,900.30	1,237.00	1,282.00	7,873.00	7,182.30	495.53	Yes	50

	4. LIBRARY PERSONNEL					
	a	b	c	a+b+c=d	e	d + e = f
	FTE Librarians (including Director)	FTE Library Staff	FTE Other Professionals	FTE Personnel	FTE Student Aides	Total Personnel in FTE
BCIT	11.20	21.40	2.00	34.60	0.67	35.27
CAM	5.50	13.53	-	19.03	0.00	19.03
CAPU	6.07	12.55		18.62		18.62
CNC	4.00	8.20		12.20		12.20
COTR	1.00	5.77	-	6.77	0.00	6.77
DOUG	10.80	26.00		36.80	1.77	38.57
ECUAD	3.60	7.95		11.55	0.43	11.98
JI	4.00	3.20		7.20	0.00	7.20
KPU	16.70	37.40	2.00	56.10	4.70	60.80
LC	10.30	16.10	1.00	27.40	1.07	28.47
NI	2.00	7.50		9.50	1.00	10.50
NL	2.00	4.59	-	6.59	0.00	6.59
NW				0.00		0.00
OC	9.00	22.00		31.00	2.00	33.00

	4. LIBRARY PERSONNEL					
	a	b	c	a+b+c=d	e	d + e = f
	FTE Librarians (including Director)	FTE Library Staff	FTE Other Professionals	FTE Personnel	FTE Student Aides	Total Personnel in FTE
QUC	1.00	1.00		2.00	0.35	2.35
RR	6.60	10.10	2.00	18.70	0.00	18.70
SEL	3.00	5.80	-	8.80	0.00	8.80
SFU	42.05	89.54	15.90	147.49	16.40	163.89
TRU	8.00	15.00	-	23.00	1.70	24.70
TWU	7.00	6.00	1.00	14.00	4.00	18.00
UBC	83.53	162.79	31.90	278.22	28.74	306.96
UFV	6.77	16.89	-	23.66	0.85	24.51
UNBC	7.00	13.50	1.00	21.50	2.29	23.79
UVIC	33.00	96.85	13.00	142.85	20.23	163.08
VCC	8.70	20.80		29.50	0.45	29.95
VIU	8.60	18.00		26.60	2.00	28.60

5. COLLECTIONS								
	a	b	c	d	e	a+b+c+d+e = f	g	h
	Monographs	Videos & Films	Other Audio Formats	Other Visual Formats	Back Issues Periodicals	Total Collection	Total Print Subscriptions	Catalogued Electronic Titles
BCIT	133,714	8,958	211		15,710	158,593	571	3,206
CAM	52,235	4,002	142	4	43,383	99,766	325	50,639
CAPU	117,019	5,112	3,484	2	19,009	144,626	422	3,983
CNC	165,359	6,658	372	412	22,138	194,939	356	5,559
COTR	50,553	5,331	307	112	4,527	60,830	92	869
DOUG	153,847	11,235	6,790	2,995	15,085	189,952	920	9,694
ECUAD	28,971	3,916	1,012	148,000	4,380	186,279	182	758
JI	23,475	4,826	160	34	4,670	33,165	171	2,132
KPU	173,641	8,421	2,220	939	14,285	199,506	923	5,236
LC	89,774	11,048	947	403	-	102,172	345	1,928
NI	33,189	2,729	39		1,879	37,836	304	913
NL	42,853	5,172	196	55	2,162	50,438	239	60
NW						-		
OC	124,275	8,776	472			133,523	648	38,258

5. COLLECTIONS								
	a	b	c	d	e	a+b+c+d+e = f	g	h
	Monographs	Videos & Films	Other Audio Formats	Other Visual Formats	Back Issues Periodicals	Total Collection	Total Print Subscriptions	Catalogued Electronic Titles
QUC	5,046	79			1,500	6,625	78	
RR	48,364	851				49,215	137	66,962
SEL	75,896	3,980	302	90	9,000	89,268	409	990
SFU	2,417,494	10,449	104,652	1,326,065	290,564	4,149,224	6,552	854,789.00
TRU	214,028	10,947	2,510	2,260	48,000	277,745	615	36,200
TWU	228,721	4,287	958	-	84,210	318,176	802	13,702
UBC	10,912,255	31,355	74,626	515,025	-	11,533,261	80,111	426,520
UFV	173,047	8,381	445	523	27,291	209,687	663	76,880
UNBC	328,282	4,072	172	432		332,958	709	41,460
UVIC	722,201	10,113	69,532			801,846	7,060	40,557
VCC	65,576	9,590	6,671	12	13,956	95,805	314	1,515
VIU	261,445	8,354	3,949	2,126		275,874	528	52,739

	6. USE									
	a (i)	a (ii)	a(i)+a(ii)=a (iii)	b	c	d	e	f	g	h
	Reference Questions	Directional questions	Total Reference Transactions	No. of Participants at group presentations	No. of Presentations to groups	Circulation: Direct	Circulation: In-Library Use	Gate Count	ILL: Received (all formats)	ILL: Sent (include all formats)
BCIT	10,288	3,063	13,351	3,421	180	71,415	16,400	686,595	1,600	1,013
CAM	9,719	3,391	13,110	188	5,227	42,691	6,409	382,893	654	478
CAPU	7,727	363	8,090	4,200	125	69,805	-	373,467	551	605
CNC			13,746	1,520	104	27,489	24,740	170,162	602	926
COTR	5,781	7,610	13,391	652	41	16,734	3,091	129,314	134	367
DOUG	25,775	1,847	27,622	8,684	471	186,749	13,739	6,000,261	1,219	989
ECUAD	1,568	456	2,024	334	24	46,818			192	121
JI	2,486	1,129	3,615	790	45	7,879	919	44,905	82	597
KPU	22,996	18,964	41,960	8,062	329	67,310	2,426	674,324	2,516	989
LC	14,576	-	14,576	5,517	206	66,482	20,842	488,930	1,287	795
NI	4,198		4,198	1,289		11,427	3,933	157,290	1,091	341
NL	2,167	3,120	5,287	339	29	10,496	n/a	74,073	915	510
NW										
OC	10,290	4,710	15,000	5,195	263	38,917			2,069	848

	6. USE									
	a (i)	a (ii)	a(i)+a(ii)=a (iii)	b	c	d	e	f	g	h
	Reference Questions	Directional questions	Total Reference Transactions	No. of Participants at group presentations	No. of Presentations to groups	Circulation: Direct	Circulation: In-Library Use	Gate Count	ILL: Received (all formats)	ILL: Sent (include all formats)
QUC	346	1,976	2,322	220	11	942	497	56,421	32	-
RR	2,714	2,490	5,204	950	33	7,726	931	68,649	235	177
SEL	1,893	4,659	6,552	968	67	14,940	4,161	57,003	486	410
SFU	66,002	106,243	172,245	23,140	1,786	615,772	188,766	1,947,685	14,031	14,677
TRU	11,089	5,931	17,020	2,589	128	148,558	-	287,402	3,623	1,469
TWU	4,427	113	4,540	2,000	35	113,765		160,933	1,444	255
UBC	100,288	96,258	196,546	32,440	1,421	2,513,529	-	2,919,499	16,602	23,968
UFV			18,215	7,250	290	108,289	16,233	362,362	2,633	979
UNBC	3,077	2,539	5,616	2,932	97	43,066		3,029	2,673	655
UVIC	42,898	14,518	57,416	5,526	321	401,349	187,706	1,252,506	11,904	5,263
VCC	21,081	5,240	26,321	4,213	224	97,734	32,512	420,684	1,075	611
VIU	18,786		18,786	3,797	163	103,761		360,143	6,188	1,271

	7. LIBRARY EXPENDITURES (CAPITAL AND OPERATING)								
	a	b	c	d	e	b+c+d+e=f	g	h	g+h=i
	Personnel (Salaries and fringe benefits)	Monographs	Audio-Visual	Current Print Periodicals	Special Funding Envelopes for Collections	Collections Subtotal	ELN Services	Non-ELN Subscriptions	Electronic Products Subtotal
BCIT	2,596,035.00	250,252.00		129,672.00		379,924.00	99,343.75	280,146.00	379,489.75
CAM	1,248,081.59	118,592.59	14,461.50	46,877.34		179,931.43	\$57,121.56	35,850.35	92,971.91
CAPU	987,548.45	109,700.79	20,452.21	90,253.00		220,406.00	69,855.00	76,189.00	146,044.00
CNC	770,433.00	74,247.00		62,825.00		137,072.00	54,787.00		54,787.00
COTR	320,582.00	5,455.04		8,469.07		13,924.11	22,193.65	10,001.25	32,194.90
DOUG	2,247,400.00	168,000.00	54,900.00	100,800.00		323,700.00	114,000.00	51,000.00	165,000.00
ECUAD	543,302.00	53,517.00	24,731.00	26,106.00		104,354.00	38,262.00	11,766.00	50,028.00
JI	475,455.00	32,500.00	25,000.00	30,000.00	44,600.00	132,100.00	35,966.00	11,034.00	47,000.00
KPU	3,084,700.00	430,534.00	40,893.00	147,688.00	36,348.00	655,463.00	154,344.64	53,950.25	208,294.89
LC	1,899,943.00	80,503.99	32,804.99	51,162.76	-	164,471.74	56,016.31	18,535.92	74,552.23
NI	450,250.00	41,150.00		22,591.00		63,741.00	22,888.00	5,880.00	28,768.00
NL	372,334.00	20,019.85	10,392.81	22,535.89		52,948.55	34,624.60	6,437.47	41,062.07
NW						-			-
OC	1,695,445.00	295,986.00	33,390.00	189,950.00		519,326.00	93,833.00	143,310.00	237,143.00

7. LIBRARY EXPENDITURES (CAPITAL AND OPERATING)									
	a	b	c	d	e	b+c+d+e=f	g	h	g+h=i
	Personnel (Salaries and fringe benefits)	Monographs	Audio-Visual	Current Print Periodicals	Special Funding Envelopes for Collections	Collections Subtotal	ELN Services	Non-ELN Subscriptions	Electronic Products Subtotal
QUC	121,728.00	70,000.00	500.00	55,000.00	-	125,500.00	1,725.00	35,000.00	36,725.00
RR	947,086.00	459,725.00	19,446.00	16,086.00		495,257.00	78,323.00	230,341.00	308,664.00
SEL	546,177.00	23,731.00	5,332.00	50,632.00		79,695.00	29,379.00	1,294.00	30,673.00
SFU	9,697,609.36	2,678,621.06	119,723.13	1,168,959.48	56,824.93	4,024,128.60	269,537.58	\$5,085,228.59	5,354,766.17
TRU	1,438,766.00	219,626.00		167,788.00	54,422.00	441,836.00			517,753.00
TWU	659,400.00	180,200.00	3,500.00	55,000.00	108,609.00	347,309.00	83,842.00	64,662.00	148,504.00
UBC	19,670,303.00	2,880,321.00	-	3,440,776.00	-	6,321,097.00	443,197.00	10,293,581.00	10,736,778.00
UFV	1,506,039.00	316,156.54	4,457.05	186,523.68		507,137.27	112,367.75	298,128.68	410,496.43
UNBC	1,340,059.00	230,079.00	26,629.00	407,010.00		663,718.00	118,680.00	748,500.00	867,180.00
UVIC	8,538,398.00	2,071,206.84		929,273.88		3,000,480.72	214,491.64	3,392,869.36	3,607,361.00
VCC	2,224,409.00	99,928.79	45,314.59	30,057.61	16,962.03	192,263.02	67,836.37	11,395.81	79,232.18
VIU	1,575,220.79	268,777.74		140,139.00		408,916.74	102,328.38	329,458.84	431,787.22

	f + i = j	k	a+j+k= l
	Total Collection Expenditures	Other	Total Library Expenditures
BCIT	759,413.75		3,355,448.75
CAM	272,903.34	71,817.59	1,592,802.52
CAPU	366,450.00	33,767.88	1,387,766.33
CNC	191,859.00	29,394.00	991,686.00
COTR	46,119.01	12,252.01	378,953.02
DOUG	488,700.00	62,900.00	2,799,000.00
ECUAD	154,382.00		697,684.00
JI	179,100.00	-	654,555.00
KPU	863,757.89	10,370.36	3,958,828.25
LC	239,023.97	-	2,138,966.97
NI	92,509.00	29,445.00	572,204.00
NL	94,010.62	27,611.68	493,956.30
NW	-		-
OC	756,469.00		2,451,914.00

	$f + i = j$	k	$a + j + k = l$
	Total Collection Expenditures	Other	Total Library Expenditures
QUC	162,225.00		283,953.00
RR	803,921.00		1,751,007.00
SEL	110,368.00	56,885.00	713,430.00
SFU	9,378,894.77	325,245.04	19,401,749.17
TRU	959,589.00	139,070.00	2,537,425.00
TWU	495,813.00		1,155,213.00
UBC	17,057,875.00	4,259,202.00	40,987,380.00
UFV	917,633.70	108,443.37	2,532,116.07
UNBC	1,530,898.00		2,870,957.00
UVIC	6,607,841.72	712,481.28	15,858,721.00
VCC	271,495.20	12,848.44	2,508,752.64
VIU	840,703.96	59,147.06	2,475,071.81

8. INSTITUTIONAL BUDGET								
	a	b	a + b = c		a	b	c	d
	Base Grant from Ministry	Other operating Funds	Total Institutional Budget	Campus Name	Total area in square meters	Total number of seats	Total hours open per week	Total reference hours per week
BCIT	124,173,000.00	126,953,000.00	251,126,000.00	BCIT Burnaby Campus	1,722.00	826.00	89.50	62.00
CAM	54,388,567.00	40,533,537.00	94,922,104.00	Lansdowne	3,325.00	299.00	73.00	65.00
CAPU	36,816,059.00	26,095,029.00	62,911,088.00	North Van	3,716.00	360.00	74.50	74.50
CNC	27,425,619.00	3,436,972.00	30,862,591.00	Prince George	2,300.00	257.00	70.00	35.00
COTR	16,066,132.00	6,357,435.00	22,423,567.00	Cranbrook	1,016.00	86.00	74.00	40.00
DOUG	53,927,967.00	36,256,278.00	90,184,245.00	New Westminster	3,448.50	432.00	70.00	70.00
ECUAD	13,344,164.00	8,967,455.00	22,311,619.00	ECUAD	992.00	85.00	78.00	78.00
JI	8,421,977.00	31,829,236.00	40,251,213.00	New Westminster	654.00	69.00	52.00	52.00
KPU	69,329,832.00	40,299,672.00	109,629,504.00	LANGLEY	1,190.00	193.00	68.25	62.00
LC	41,552,724.00	1,773,385.00	43,326,109.00	Langara	4,743.00	485.00	69.00	69.00
NI	23,604,312.00	4,152,852.00	27,757,164.00	Comox Valley	495.00	87.00	54.00	54.00
NL	20,229,327.00	9,857,590.00	30,086,917.00	Dawson Creek	420.00	48.00	60.00	35.00
NW			-					
OC	50,198,606.00	25,479,110.00	75,677,716.00	Kelowna	3,121.00	98.00	82.00	61.00

8. INSTITUTIONAL BUDGET								
	a	b	a + b = c		a	b	c	d
	Base Grant from Ministry	Other operating Funds	Total Institutional Budget	Campus Name	Total area in square meters	Total number of seats	Total hours open per week	Total reference hours per week
QUC	-	-		Quest University Canada	855.00	136.00	50.00	50.00
RR	16,200,000.00	37,700,000.00	53,900,000.00	Royal Roads university	1,900.00	160.00	81.50	62.00
SEL	24,963,431.00	9,450,130.00	34,413,561.00	Castlegar	1,250.00	124.00	59.50	49.00
SFU	198,387,000.00	284,373,000.00	482,760,000.00	Burnaby	16,503.00	1,157.00	99.00	86.00
TRU	75,642,052.00	69,616,214.00	145,258,266.00	Kamloops	2,903.00	185.00	110.00	81.00
TWU				Norma Marion Alloway Library	3,344.50	338.00	83.00	60.00
UBC	498,038,000.00	231,422,000.00	729,460,000.00	UBCV	38,615.00	4,353.00	949.50	849.50
UFV	45,872,799.00	33,713,424.00	79,586,223.00	Abbotsford	3,149.00	250.00	80.00	67.00
UNBC	41,842,000.00	19,338,000.00	61,180,000.00	Geoffrey R. Weller Library	4,248.70	465.00	92.00	56.00
UVIC	169,952,000.00	100,213,000.00	270,165,000.00	MAIN	30,687.18	1,978.00	99.50	131.00
VCC	47,250,063.00	40,376,804.00	87,626,867.00	Broadway Campus	1,603.00	160.00	56.00	51.00
VIU	56,417,843.00	57,735,757.00	114,153,600.00	Nanaimo	6,812.00	701.00	99.00	75.00

9. FACILITIES AND HOURS: For each staffed Library										
		a	b	c	d		a	b	c	d
	Campus Name	Total area in square meters	Total number of seats	Total hours open per week	Total reference hours per week	Campus Name	Total area in square meters	Total number of seats	Total hours open per week	Total reference hours per week
BCIT	BCIT Marine Campus	232.00	53.00	35.00	7.00	BCIT Aerospace and Technology Campus	257.90	86.00	57.50	7.00
CAM	Interurban	1,139.00	156.00	54.00	25.00					
CAPU	Sunshine Coast Sechelt	98.90	30.00	47.50		Squamish	11.90	6.00	47.50	
CNC										
COTR										
DOUG	David Lam	1,916.00	290.00	70.00	70.00					
ECUAD										
JI										
KPU	RICHMOND	1,700.00	210.00	68.25	62.00	SURREY	6,920.00	522.00	68.25	62.00
LC										
NI	Campbell River	305.00	69.00	54.00	54.00	Port Alberni	198.00	52.00	54.00	52.00
NL	Fort St. John	350.00	51.00	60.00	35.00	Fort Nelson	103.00	20.00	40.00	35.00
NW										
OC	Vernon	2,126.00	96.00	74.50	22.50	Penticton	1,364.00	78.00	78.00	20.10

9. FACILITIES AND HOURS: For each staffed Library										
		a	b	c	d		a	b	c	d
	Campus Name	Total area in square meters	Total number of seats	Total hours open per week	Total reference hours per week	Campus Name	Total area in square meters	Total number of seats	Total hours open per week	Total reference hours per week
QUC										
RR										
SEL	Silver King (Nelson)	155.00	15.00	20.00	-	Tenth St (Nelson)	105.00	4.00	20.00	
SFU	Vancouver	765.00	156.00	76.00	66.00	Surrey	2,137.00	250.00	69.00	54.50
TRU	Williams Lake	172.00	20.00	58.00	30.00					
TWU										
UBC	UBCO	2,756.00	450.00	100.50	74.50					
UFV	Chilliwack	315.00	30.00	66.50	60.50	Mission	71.00	14.00	22.00	22.00
UNBC										
UVIC										
VCC	Downtown Campus	675.00	106.00	59.00	59.00					
VIU	Cowichan	305.00	87.00	64.00	64.00	Powell River	161.00	20.00	25.00	25.00

		a	b	c	d	e	f	g	h
	Campus Name	Total area in square meters	Total number of seats	Total hours open per week	Total reference hours per week	Total square meters all campuses	Total seats all campuses	Total open hours per week all campuses	Total reference hours per week all campuses
BCIT						2,211.90	965.00	182.00	76.00
CAM						4,464.00	455.00	127.00	90.00
CAPU						3,826.80	396.00	169.50	74.50
CNC						2,300.00	257.00	70.00	35.00
COTR						1,016.00	86.00	74.00	40.00
DOUG						5,364.50	722.00	140.00	140.00
ECUAD						992.00	85.00	78.00	78.00
JI						654.00	69.00	52.00	52.00
KPU	CLOVERDALE	546.00	86.00	60.00	16.00	10,356.00	1,011.00	264.75	202.00
LC						4,743.00	485.00	69.00	69.00
NI	Port Hardy	308.00	19.00	17.50	5.50	1,306.00	227.00	179.50	165.50
NL						873.00	119.00	160.00	105.00
NW						-	-	-	-
OC	Salmon Arm	1,256.00	70.00	72.00	20.10	7,867.00	342.00	306.50	123.70

		a	b	c	d	e	f	g	h
	Campus Name	Total area in square meters	Total number of seats	Total hours open per week	Total reference hours per week	Total square meters all campuses	Total seats all campuses	Total open hours per week all campuses	Total reference hours per week all campuses
QUC						855.00	136.00	50.00	50.00
RR						1,900.00	160.00	81.50	62.00
SEL						1,510.00	143.00	99.50	49.00
SFU						19,405.00	1,563.00	244.00	206.50
TRU						3,075.00	205.00	168.00	111.00
TWU						3,344.50	338.00	83.00	60.00
UBC						41,371.00	4,803.00	1,050.00	924.00
UFV						3,535.00	294.00	168.50	149.50
UNBC						4,248.70	465.00	92.00	56.00
UVIC						30,687.18	1,978.00	99.50	131.00
VCC						2,278.00	266.00	115.00	110.00
VIU						7,278.00	808.00	188.00	164.00

10. COMPUTING INFRASTRUCTURE							
	a	b	c	d	e	f	
	No. of public workstations	Wireless available	No. of laptops available	No. of laptops circulated	No. of laptop ports	Other Mobile devices	If yes, please clarify
BCIT	116	Yes	24	2,902	170	Yes	LCD Projectors
CAM	60	Yes	0	0	35		
CAPU	69	Yes	16	2,952	N/A	No	
CNC	43	Yes			8		
COTR	58	yes	10	662		yes	2 LCD projector/computer mobile stations. 1 disability/adaptive technology mobile work station.
DOUG	150	Yes	36	1,652		Yes	Cameras, camcorders, light sets, tripods, LCD projectors, computer on Wheels, Slide Projectors, TV/VCR/DVD units DVD editing unit, PA system, CD players, Cassette records
ECUAD	18	Yes					
JI	23	yes	-	0	6	0	na
KPU	161	YES	31	2,365	0	YES	35mm cameras, digital cameras, camcorders light sets. Tripods, computers on wheels, data projectors, slide projectors, video projectors, USB drives, TV/VCR/DVD units, DVD players, blaster, CD players, cassette recorders, walkmans, PA system.
LC	110	yes	-	n/a	n/a	yes	Wireless Internet with Innovative's AirPac product allows any wireless device with browser capability to access the OPAC
NI	46	yes	-	0			
NL	42	yes	10.00	n/a		N	
NW							
OC	123	Yes	32				

10. COMPUTING INFRASTRUCTURE							
	a	b	c	d	e	f	
	No. of public workstations	Wireless available	No. of laptops available	No. of laptops circulated	No. of laptop ports	Other Mobile devices	If yes, please clarify
QUC	7	Yes	-		80	Yes	digital cameras, camcorders
RR	46	Yes	-	0	19		
SEL	26	yes				yes	portable dvd players
SFU	391	Yes	102	29,288	45	Yes	Digital projectors, digital cameras, video cameras, tripods, camera lights, web cams, graphic tablets, GPS units, microphones, external storage devices, digital audio recorders, headphones, gaming equipment, gaming consoles (Sony Playstation 2, Nintendo Wii, Xbox 360)
TRU	43	yes	5	322	11	no	
TWU	26	Yes			16	No	
UBC	690	Yes	70.00	14,146	158	Yes	Nintendo DS (3, game devices)
UFV	44	Yes	-	0			
UNBC	92	yes	-	0	101	0	
UVIC	163	Yes	45	9,064	300	No	
VCC	43	No					
VIU	129	Yes	8.00	244	62		

11. LIBRARY AUTOMATED SYSTEM							
	Cataloguing	Primary source of bibliographic records	Secondary source of bibliographic records	OPAC	Periodicals Check In	Acquisitions	Interlibrary Loans
BCIT	Innovative	OCLC/LC	OCLC/LC	Innovative			
CAM	SirsiDynix Symphony	Agent, Amicus	Other z39.50 sites	SirsiDynix Webcat	SirsiDynix Symphony	SirsiDynix Symphony	Ariel/Outlook
CAPU	Innovative Interfacing Inc	AG Canada	LC, AEMAC	Innopac	Innovative	Innovative	Ariel/Outlook
CNC	SirsiDynix	Amicus	LC	SirsiDynix Webcat			Arien/Outlook/e-mail
COTR	SIRSI Unicorn	Z39.50	Outlook	SIRSI Webcat	SIRSI Unicorn	SIRSI Unicorn	Outlook/Ariel/GOD OT/email
DOUG	Innovative	OCLC, AG Canada, Amicus	other Z39.50 sites	Innovative	Innovative	Innovative	Ariel/Outlook
ECUAD	SirsiDynix Horizon	Bookwhere	Book vendors	Horizon	Horizon	Horizon	Ariel and email
JI	SirsiDynix	OCLC	AMICUS	SirsiDynix	SirsiDynix	SirsiDynix	Ariel, Outlook
KPU	SIRSI	LAC, LC, OUTLOOK	OCLC	SIRSI	SIRSI	SIRSI	GODOT, ARIEL, SIRSI
LC	Innovative Interfaces Inc (III) - Millennium	Bookwhere	Z39.50 libraries	III - Millennium	III - Millennium	III - Millennium	Ariel - Outlook
NI	SirsiDynix	LC/Amicus		SirsiDynix		SirsiDynix	Ariel/Outlook/e-mail
NL	SIRSI	Outlook	Amicus	SIRSI Webcat	SIRSI	SIRSI	Outlook
NW							
OC	ExLibris Blackwells	ExLibris Voyager	ExLibris Voyager	ExLibris Voyager	ExLibris Voyager	ExLibris Voyager	Ariel - outlook

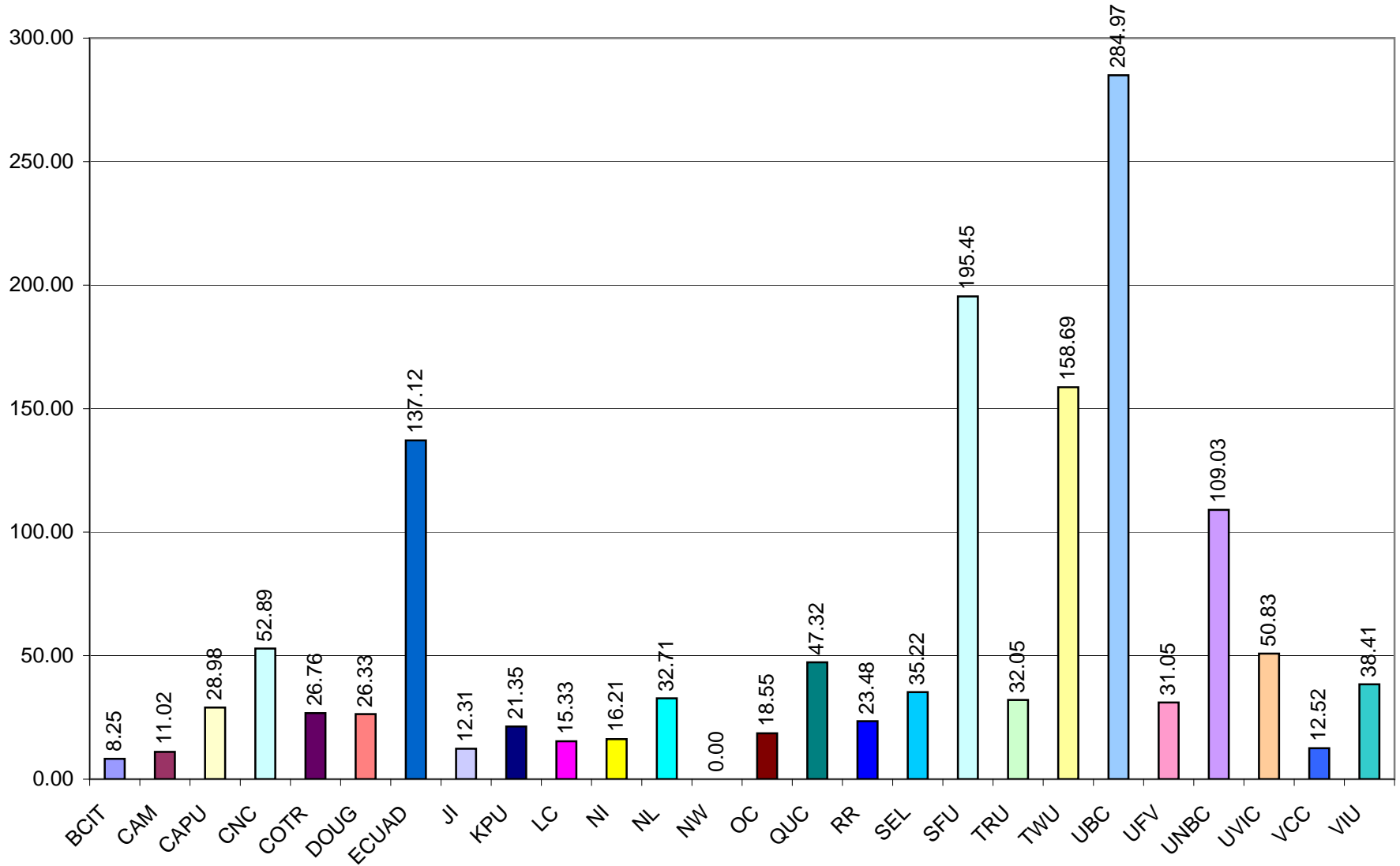
11. LIBRARY AUTOMATED SYSTEM							
	Cataloguing	Primary source of bibliographic records	Secondary source of bibliographic records	OPAC	Periodicals Check In	Acquisitions	Interlibrary Loans
QUC	Voyager (Endeavor)	Library of Congress	Library & Archives Canada	Voyager/ExLibris	Voyager/ExLibris	Voyager/ExLibris	manual
RR	Voyager (Endeavor)	bna	z39.50, amicus	Voyager (Endeavor)	Voyager (Endeavor)	Voyager (Endeavor)	openILL
SEL	Sirsi	National Library/LC/Outlook	other Z39.50 sites	Sirsi	Sirsi	Sirsi	Ariel, Outlook
SFU	Innovative Interfaces, Inc. (III)	Blackwell's North America	OCLC and AG Canada	III Millennium	III Java Millennium	III Java Millennium	Relais
TRU	Sirsi/Unicorn	Blackwell North America	Amicus	Sirsi/Unicorn	Sirsi/Unicorn	Sirsi/Unicorn	Open ILL
TWU	SirsiDynix Horizon	OCLC	Amicus	Horizon	N/A	Horizon	Relais/OCLC
UBC	Voyager/ExLibris	LC	OCLC	Voyager/ExLibris	Voyager/ExLibris	Voyager/ExLibris	Relais
UFV	SirsiDynix	OCLC,LC, Amicus		SirsiDynix	SirsiDynix	SirsiDynix	Open ILL, Godot, Outlook, Amicus
UNBC	III Millennium	OCLC	NLC	III Millennium	III Millennium	III Millennium	Relais
UVIC	Voyager/ExLibris	OCLC; Vendor records; Z39.50 databases		Voyager/ExLibris	Voyager/ExLibris	Voyager/ExLibris	OCLC; Relais
VCC	VTLS Virtua	B&T	BOOKWHERE	VTLS	VTLS	VTLS	VARIOUS
VIU	SIRSI	BIBLIOFILE/AMICUS	BOOKWHERE	SIRSI	SIRSI	SIRSI	RELAIS

	a) Volumes/FTE Student: 5(f)/3(f)	b) Subscriptions/FTE Student: 5(g)/3(f)	c) Collection Expenditures/FTE Student: 7(i)/3(f)	d) Library Expenditures/FTE Student: 7(i)/3(f)	e) Collection Expenditures as % of Library Expenditures: 7(i)/7(i)	f) Periodicals as % of Library Expenditures: 7(d)/7(i)	g) Electronic Services as % of Library Expenditures: 7(i)/7(i)	h) Library Expenditures as % of Institutional Budget: 7(i)/8(c)	i) FTE Students/FTE Library Personnel: 3(f)/4(f)	j) Direct Circulation/FTE Student: 6(d)/3(f)	k) Direct Circulation/Total Volumes: 6(d)/5(f)	l) Total Library Expenditure/Circulation: 7(i)/6(d)	m) Reference Transactions/FTE Student: 6a(iii)/3(f)	n) Number of Students Instructed/FTE Students: 6(b)/3(f)	o) Total Library Area/FTE Students: 9(e) total /3(f)	p) Number of Seats/FTE Student: 9(f) total /3(f)	q) Hours Open/FTE Personnel: 9(g) total /4(f)	r) Reference Hours/Total Open Hours: 9(h) total /9(g)	
Library	Ratios																		
BCIT	8.25	0.03	39.49	174.47	22.63%	3.86%	11.31%	1.34%	545.28	3.71	0.45	46.99	0.69	0.18	0.12	0.05	5.16	0.42	
CAM	11.02	0.04	30.15	175.97	17.13%	2.94%	5.84%	1.68%	475.66	4.72	0.43	37.31	1.45	0.02	0.49	0.05	6.67	0.71	
CAPU	28.98	0.08	73.42	278.06	26.41%	6.50%	10.52%	2.21%	268.04	13.99	0.48	19.88	1.62	0.84	0.77	0.08	9.10	0.44	
CNC	52.89	0.10	52.05	269.05	19.35%	6.34%	5.52%	3.21%	302.12	7.46	0.14	36.08	3.73	0.41	0.62	0.07	5.74	0.50	
COTR	26.76	0.04	20.29	166.70	12.17%	2.23%	8.50%	1.69%	335.79	7.36	0.28	22.65	5.89	0.29	0.45	0.04	10.93	0.54	
DOUG	26.33	0.13	67.73	387.91	17.46%	3.60%	5.89%	3.10%	187.08	25.88	0.98	14.99	3.83	1.20	0.74	0.10	3.63	1.00	
ECUAD	137.12	0.13	113.64	513.57	22.13%	3.74%	7.17%	3.13%	113.40	34.46	0.25	14.90	1.49	0.25	0.73	0.06	6.51	1.00	
JI	12.31	0.06	66.49	243.00	27.36%	4.58%	7.18%	1.63%	374.11	2.93	0.24	83.08	1.34	0.29	0.24	0.03	7.22	1.00	
KPU	21.35	0.10	92.43	423.61	21.82%	3.73%	5.26%	3.61%	153.71	7.20	0.34	58.81	4.49	0.86	1.11	0.11	4.35	0.76	
LC	15.33	0.05	35.87	320.95	11.17%	2.39%	3.49%	4.94%	234.09	9.98	0.65	32.17	2.19	0.83	0.71	0.07	2.42	1.00	
NI	16.21	0.13	39.63	245.10	16.17%	3.95%	5.03%	2.06%	222.34	4.89	0.30	50.07	1.80	0.55	0.56	0.10	17.10	0.92	
NL	32.71	0.16	60.97	320.36	19.03%	4.56%	8.31%	1.64%	233.98	6.81	0.21	47.06	3.43	0.22	0.57	0.08	24.28	0.66	
NW	0.00	0.00	0.00	0.00	#DIV/0!	#DIV/0!	#DIV/0!	#DIV/0!	#DIV/0!	0.00	#DIV/0!	#DIV/0!	0.00	0.00	0.00	0.00	#DIV/0!	#DIV/0!	
OC	18.55	0.09	105.09	340.62	30.85%	7.75%	9.67%	3.24%	218.13	5.41	0.29	63.00	2.08	0.72	1.09	0.05	9.29	0.40	
QUC	47.32	0.56	1158.75	2028.24	57.13%	19.37%	12.93%	#DIV/0!	59.57	6.73	0.14	301.44	16.59	1.57	6.11	0.97	21.28	1.00	
RR	23.48	0.07	383.57	835.44	45.91%	0.92%	17.63%	3.25%	112.08	3.69	0.16	226.64	2.48	0.45	0.91	0.08	4.36	0.76	
SEL	35.22	0.16	43.54	281.45	15.47%	7.10%	4.30%	2.07%	288.05	5.89	0.17	47.75	2.58	0.38	0.60	0.06	11.31	0.49	
SFU	195.45	0.31	441.80	913.94	48.34%	6.03%	27.60%	4.02%	129.53	29.01	0.15	31.51	8.11	1.09	0.91	0.07	1.49	0.85	
TRU	32.05	0.07	110.73	292.79	37.82%	6.61%	20.40%	1.75%	350.86	17.14	0.53	17.08	1.96	0.30	0.35	0.02	6.80	0.66	
TWU	158.69	0.40	247.29	576.17	42.92%	4.76%	12.86%	#DIV/0!	111.39	56.74	0.36	10.15	2.26	1.00	1.67	0.17	4.61	0.72	
UBC	284.97	1.98	421.47	1012.73	41.62%	8.39%	26.20%	5.62%	131.85	62.11	0.22	16.31	4.86	0.80	1.02	0.12	3.42	0.88	
UFV	31.05	0.10	135.88	374.95	36.24%	7.37%	16.21%	3.18%	275.53	16.03	0.52	23.38	2.70	1.07	0.52	0.04	6.87	0.89	
UNBC	109.03	0.23	501.29	940.10	53.32%	14.18%	30.21%	4.69%	128.37	14.10	0.13	66.66	1.84	0.96	1.39	0.15	3.87	0.61	
UVIC	50.83	0.45	418.88	1005.31	41.67%	5.86%	22.75%	5.87%	96.73	25.44	0.50	39.51	3.64	0.35	1.95	0.13	0.61	1.32	
VCC	12.52	0.04	35.49	327.94	10.82%	1.20%	3.16%	2.86%	255.43	12.78	1.02	25.67	3.44	0.55	0.30	0.03	3.84	0.96	
VIU	38.41	0.07	117.05	344.61	33.97%	5.66%	17.45%	2.17%	251.13	14.45	0.38	23.85	2.62	0.53	1.01	0.11	6.57	0.87	

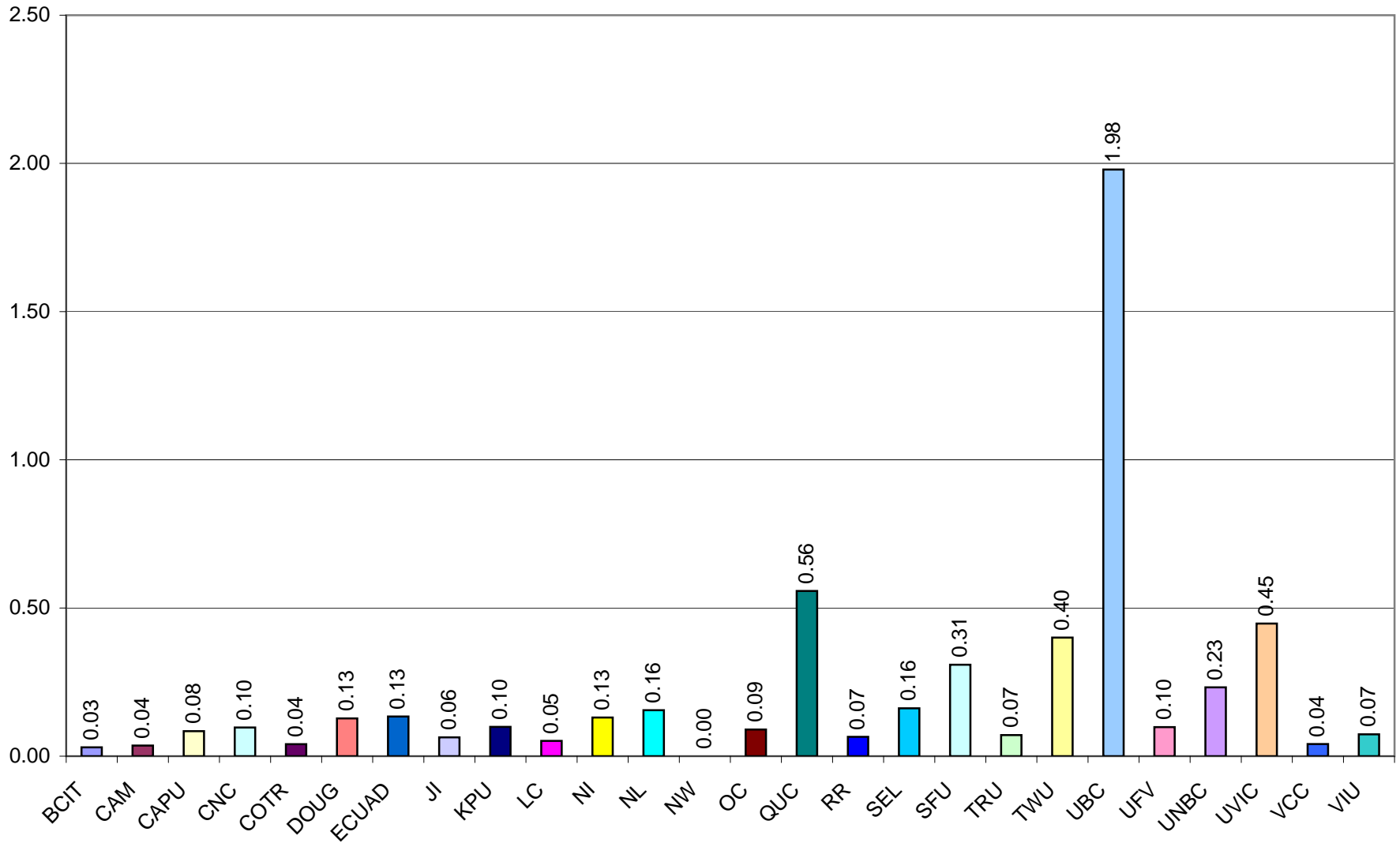
**CPSLD LIBRARY SURVEY 2008-2009
EXPLANATORY NOTES**

Library	Notes
UNBC	Gate count is exemplar from Oct 17/08
CAM	For Periodical back issues the number provided is an issue count. We have no means of counting volumes. For a number of years the figure provided was an estimate and probably incorrect. This number will skew our collection count for this year. Both campuses did significant weeding this year in anticipation of upcoming moves and renovations.
UFV	5b) Audio visual materials are also purchases from the monographs budget
VCC	5g) include departmental subscriptions that are housed in the library for library user access.
ECUAD	5. Collections - Other Visual Formats is the circulating slide collection. 6. USE - Total Circulations does not include on-line renewals.
VIU	8b) full operating budget reported for the first time 9c) Library Commons open 99 hours, Library 75 hours
COTR	7. Library Expenditures - Monographs Includes audio-visual. In the absence of the Library Co-ordinator, a limited number of new acquisitions were made through the Library budget, but instead were coded to individual departments budget lines.
UBC	3g. 2009 includes clinical/sessionals FTE; 2008 report included professorial category only. 5c. 2008 count has been revised: new base count for 2009. 5e. Included in monos volumes. 5g. New counting methodology: titles, not subscriptions; print + e-journals, de-duped. 5h. Excludes digital pages/images 1.6 M. 6b. Excludes VISTA online courses (3515 participants). 6c. 2008 report was in error (typo). 6f. Gate count excludes IKBLC south. 7. Includes benefits, includes UBCO.

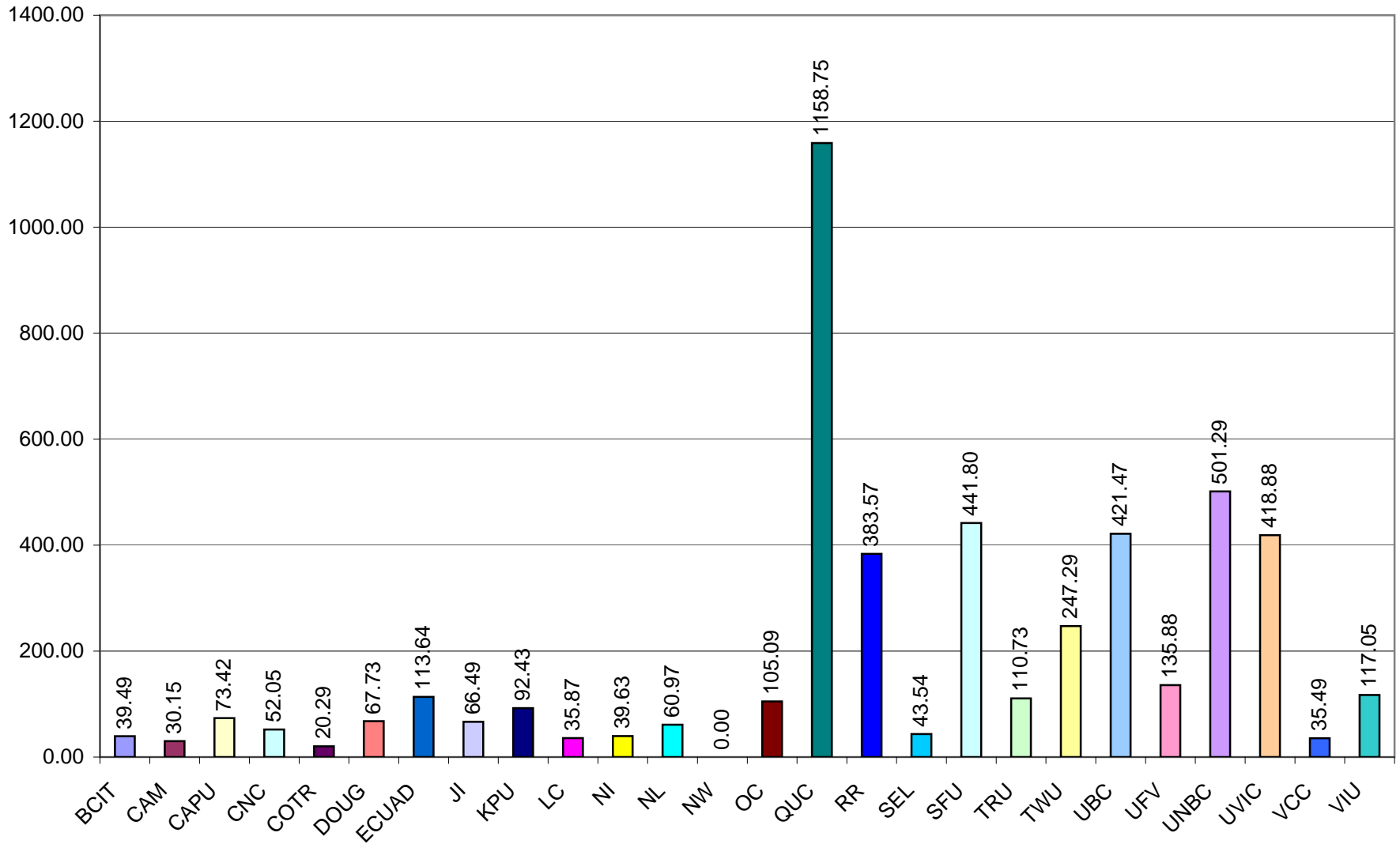
a) Volumes per FTE Student: 5(f)/3(f)



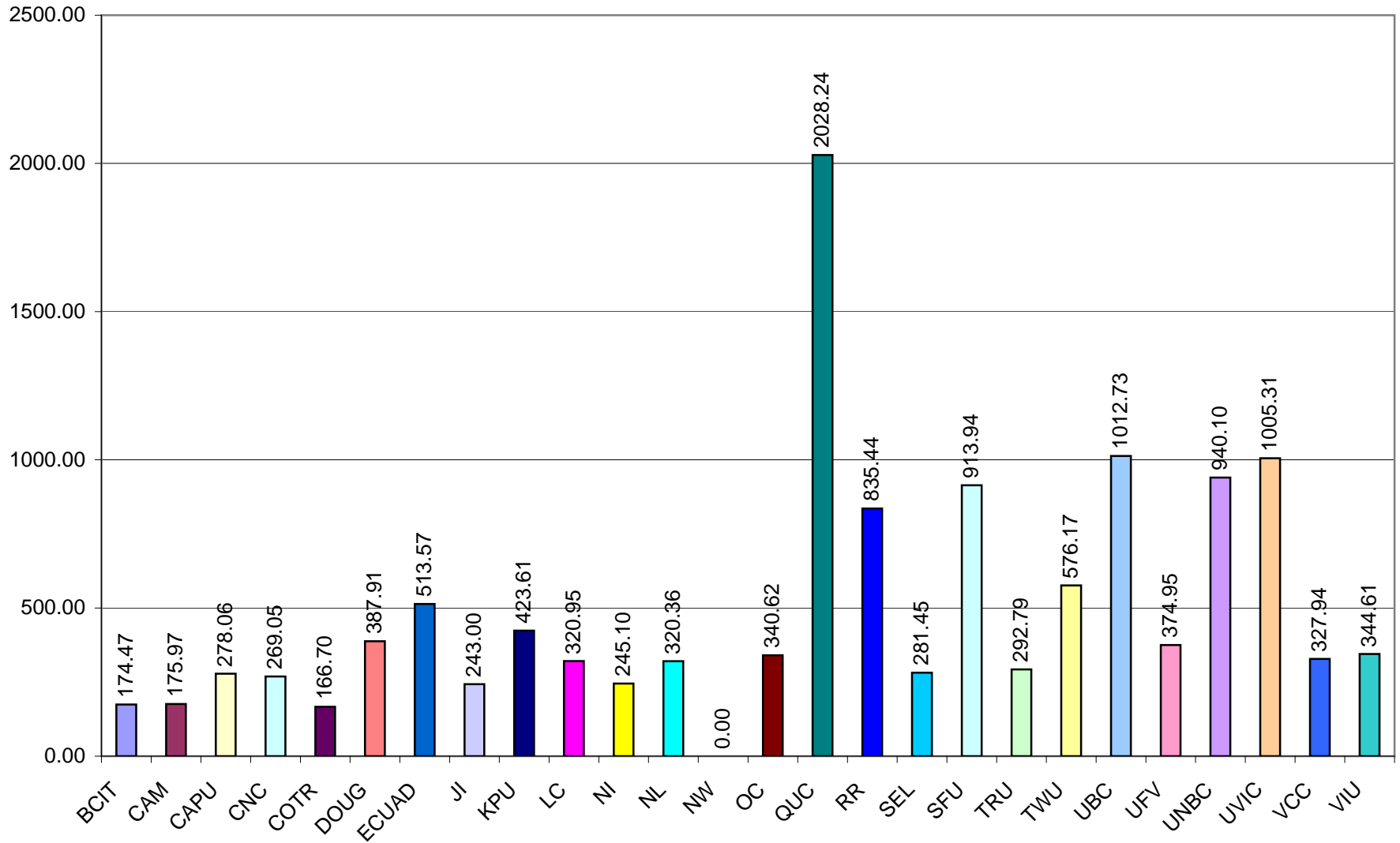
b) Subscriptions per FTE Student: 5(g)/3(f)



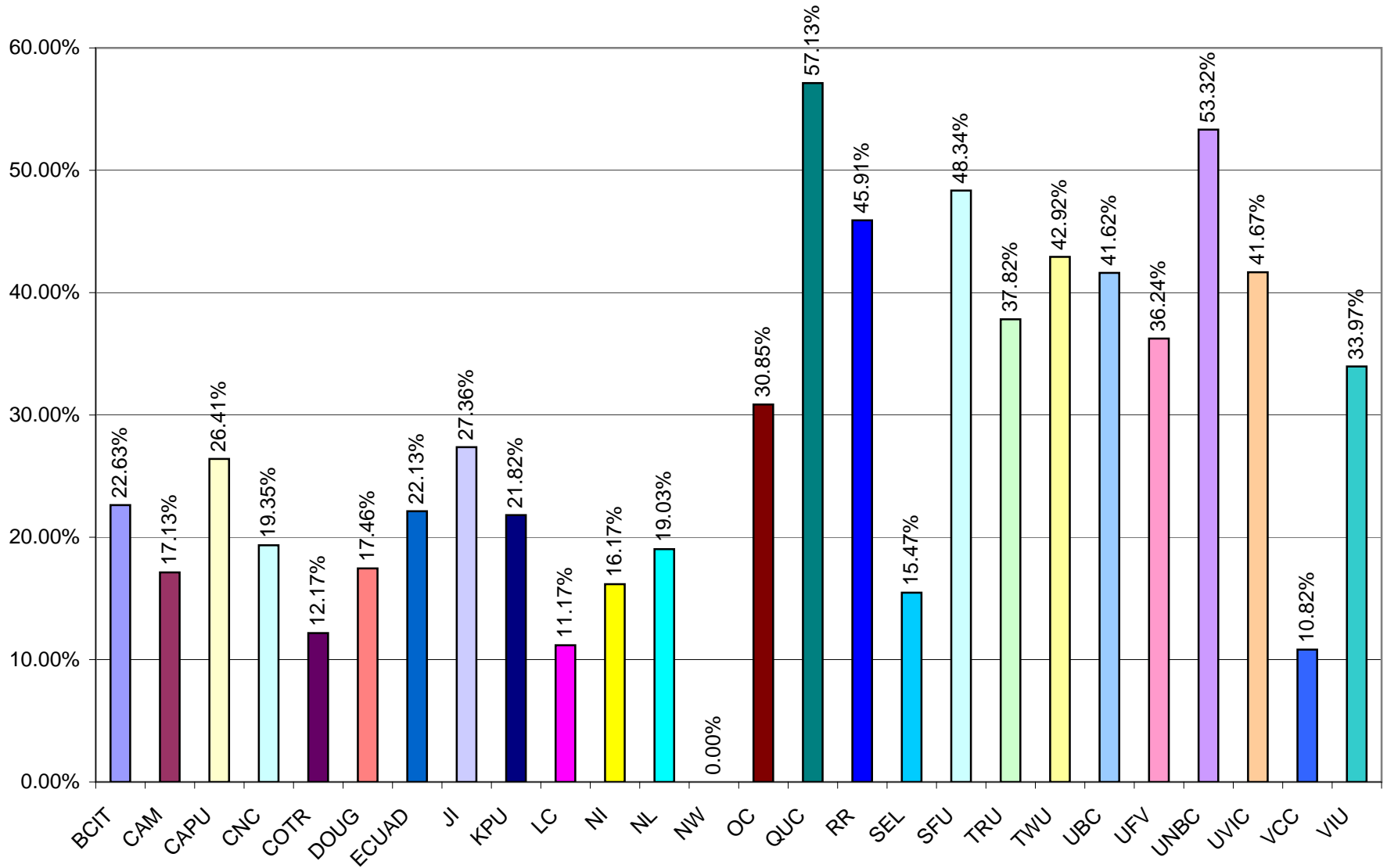
c) Collection Expenditures per FTE Student: 7(j)/3(f)



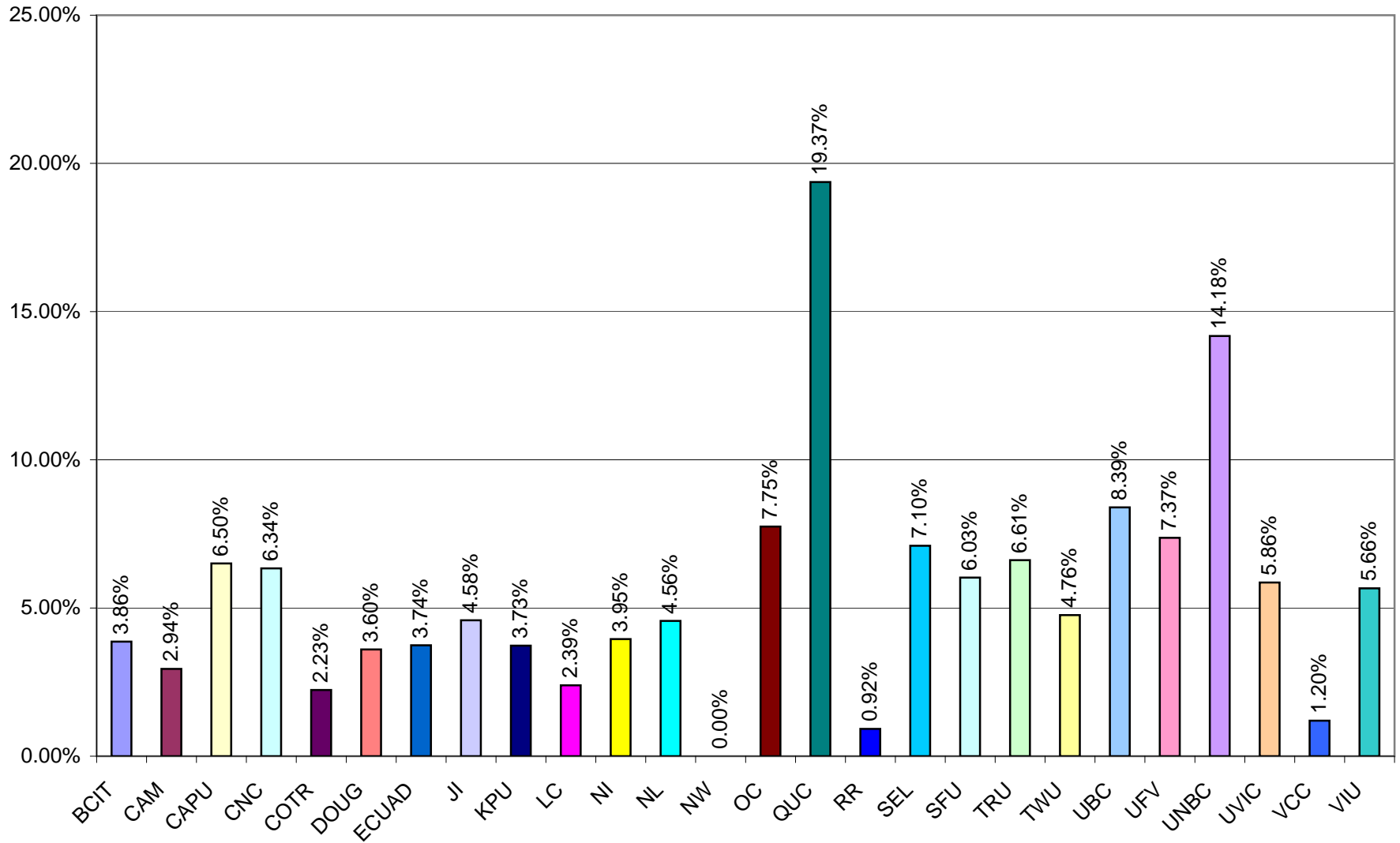
d) Library Expenditures per FTE Student: 7(l)/3(f)



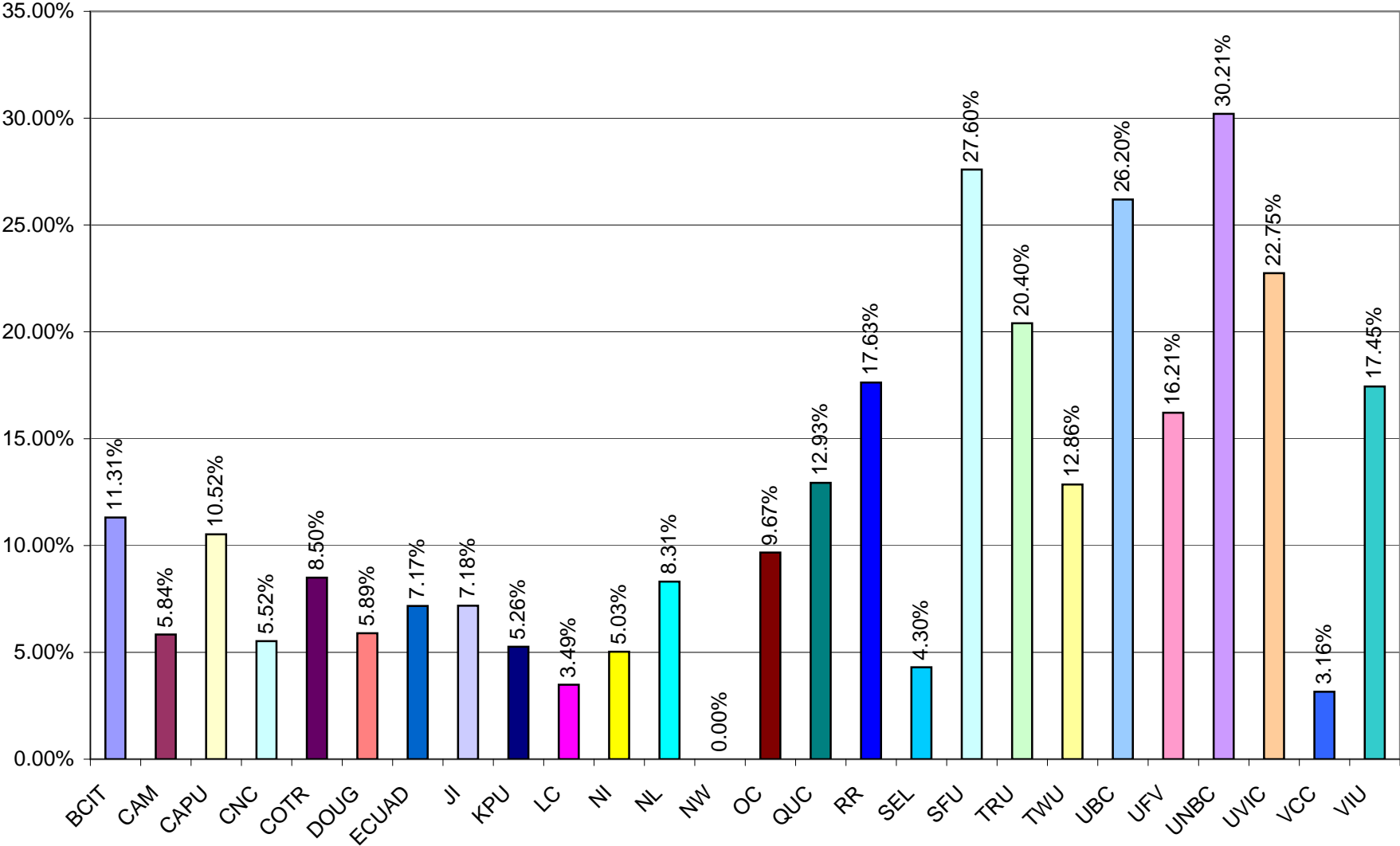
e) Collection Expenditures as % of Library Expenditures: 7(j)/7(l)



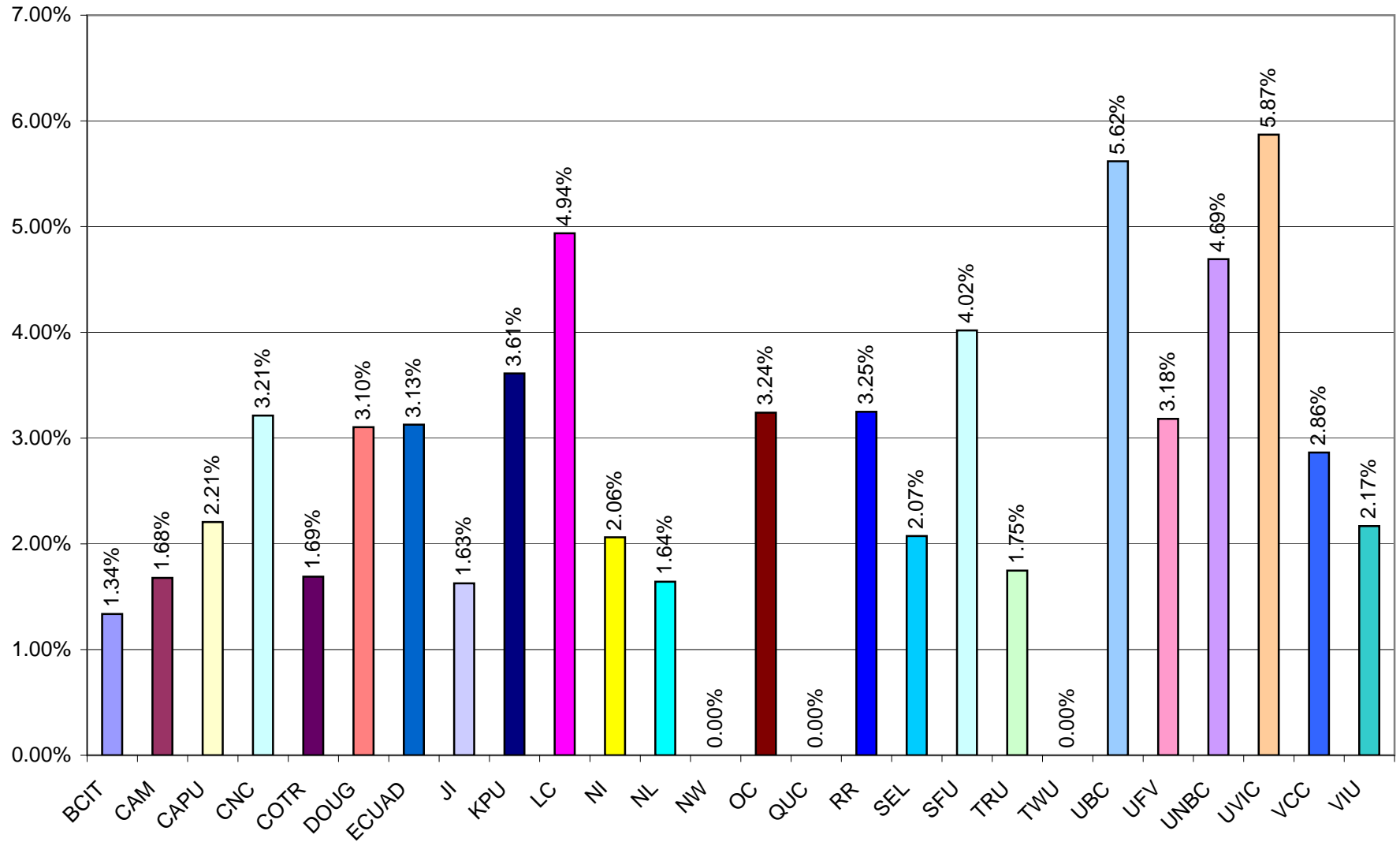
f) Periodicals as % of Library Expenditures: 7(d)/7(l)



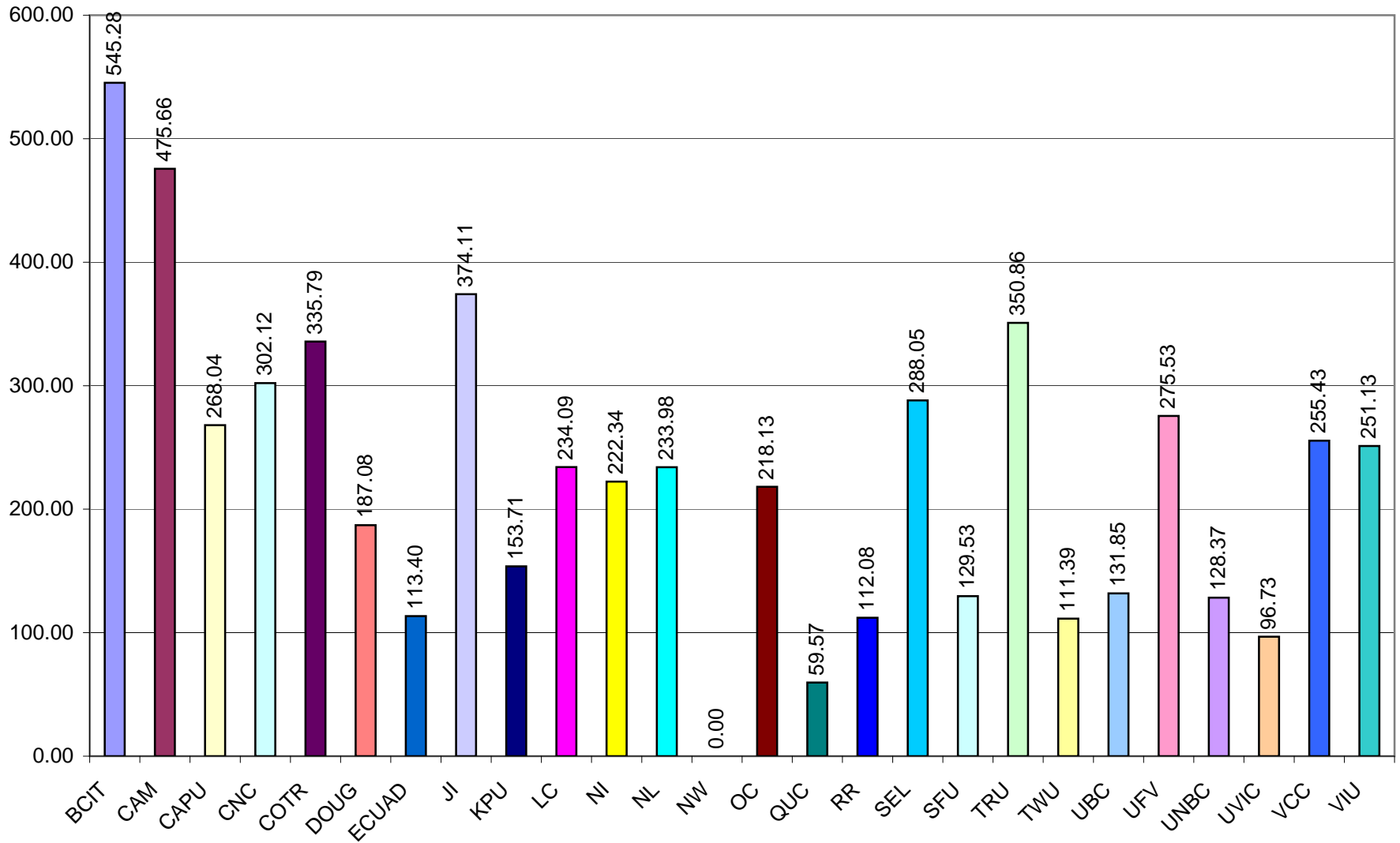
g) Electronic Services as % of Library Expenditures: 7(i)/7(l)



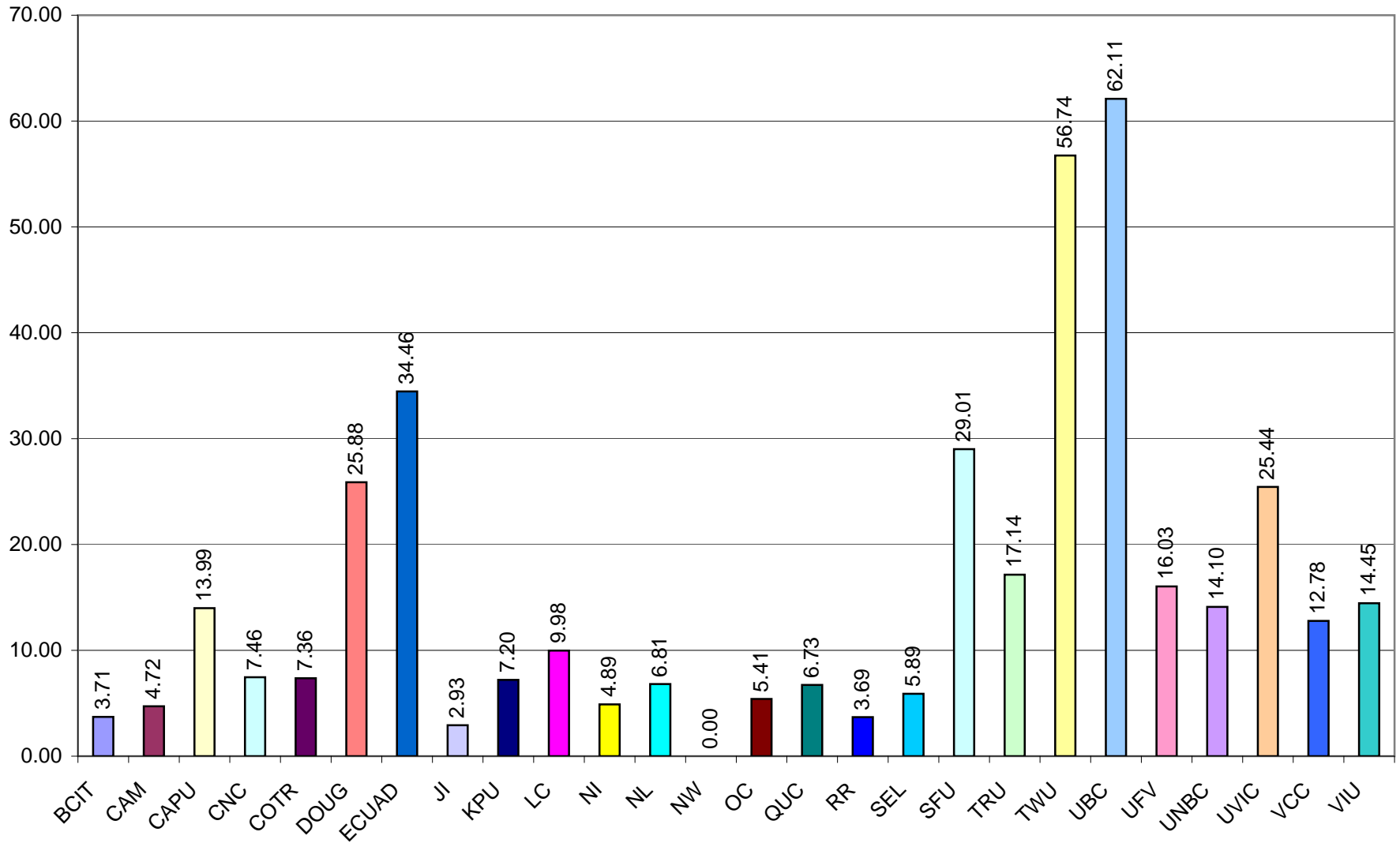
h) Library Expenditures as % of Institutional Budget: 7(l)/8(c)



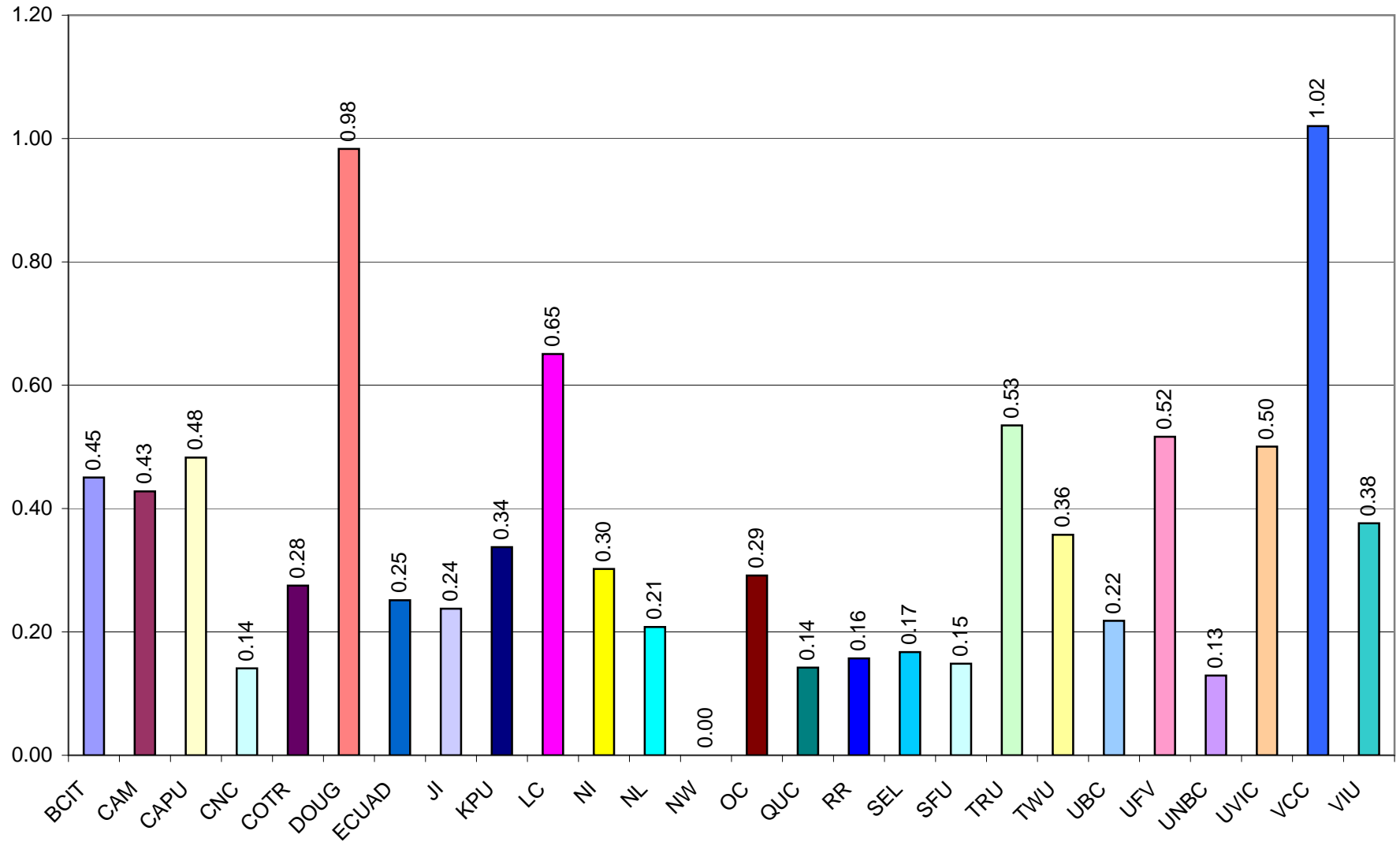
i) FTE Students per FTE Library Personnel: 3(f)/4(f)



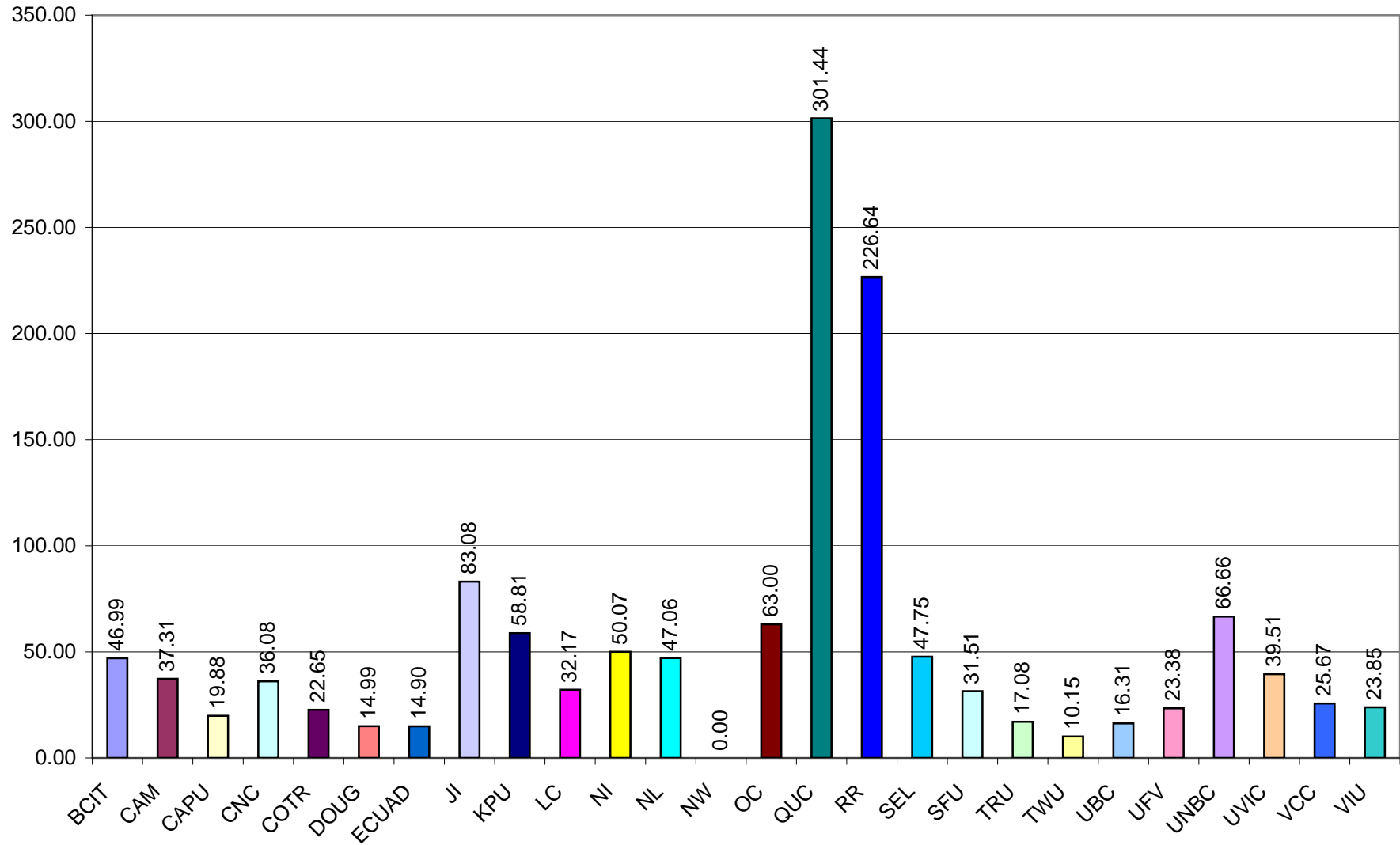
j) Direct Circulation per FTE Student: 6(d)/3(f)



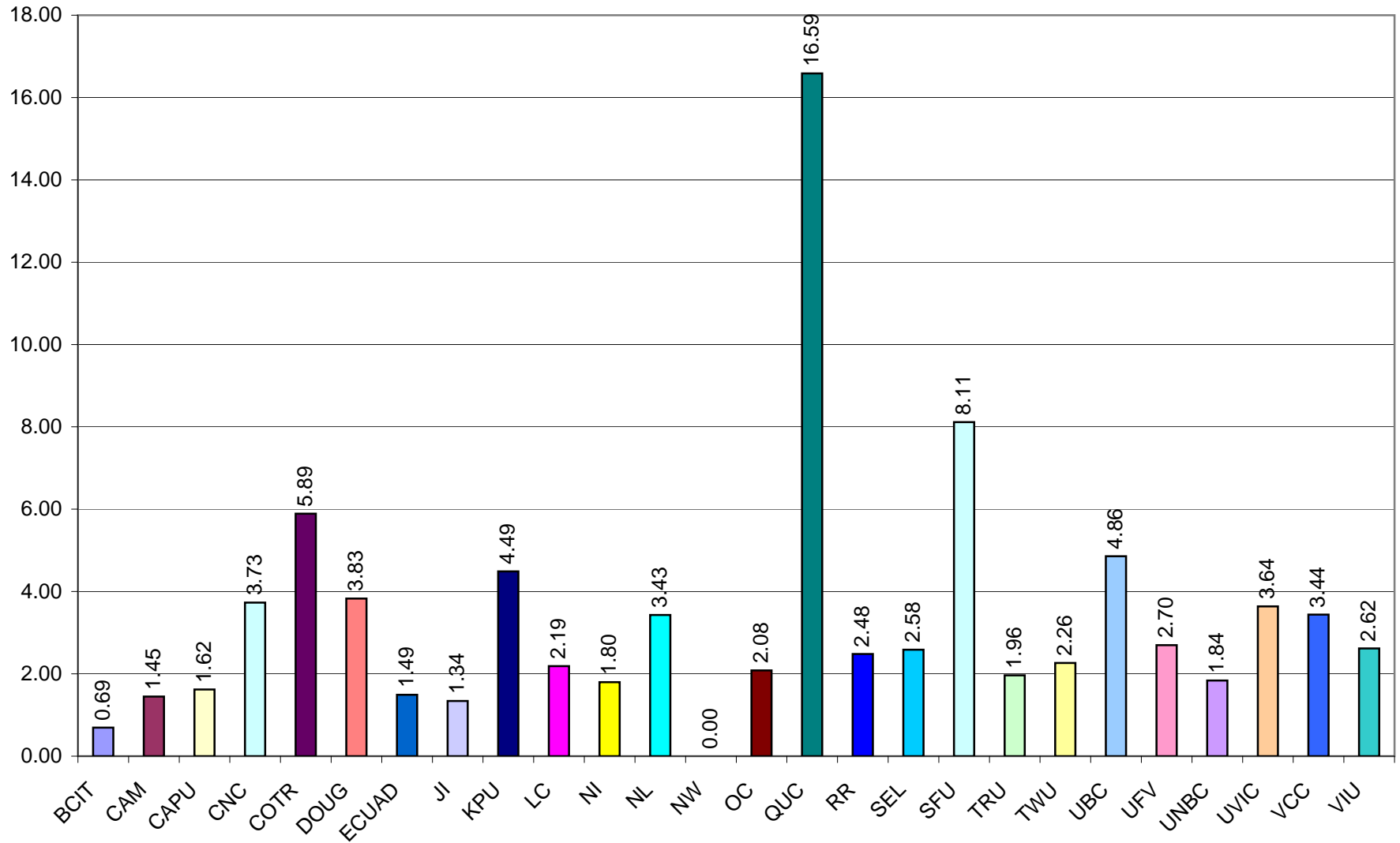
k) Direct Circulation per Total Volumes: 6(d)/5(f)



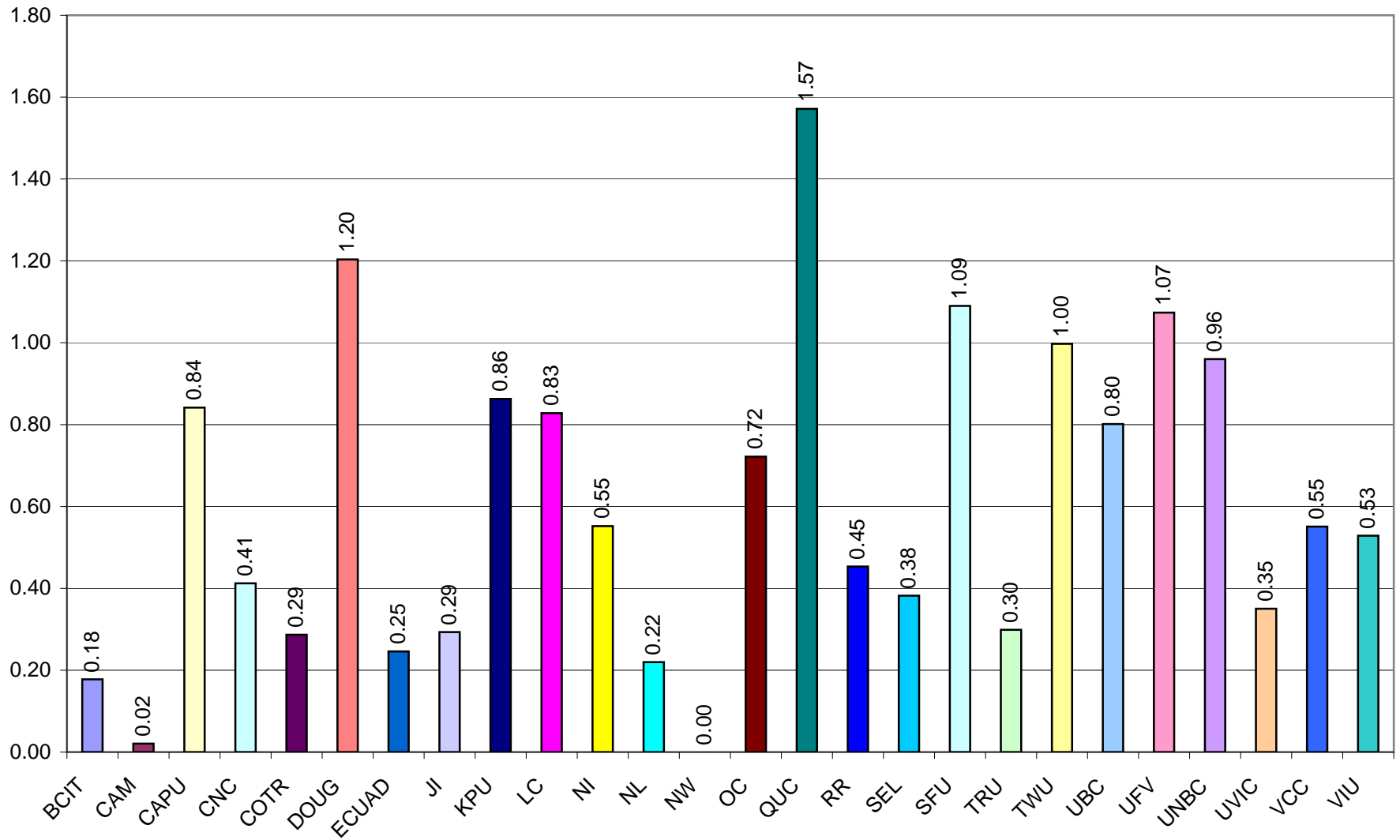
I) Total Library Expenditures per Circulation: 7(l)/6(d)



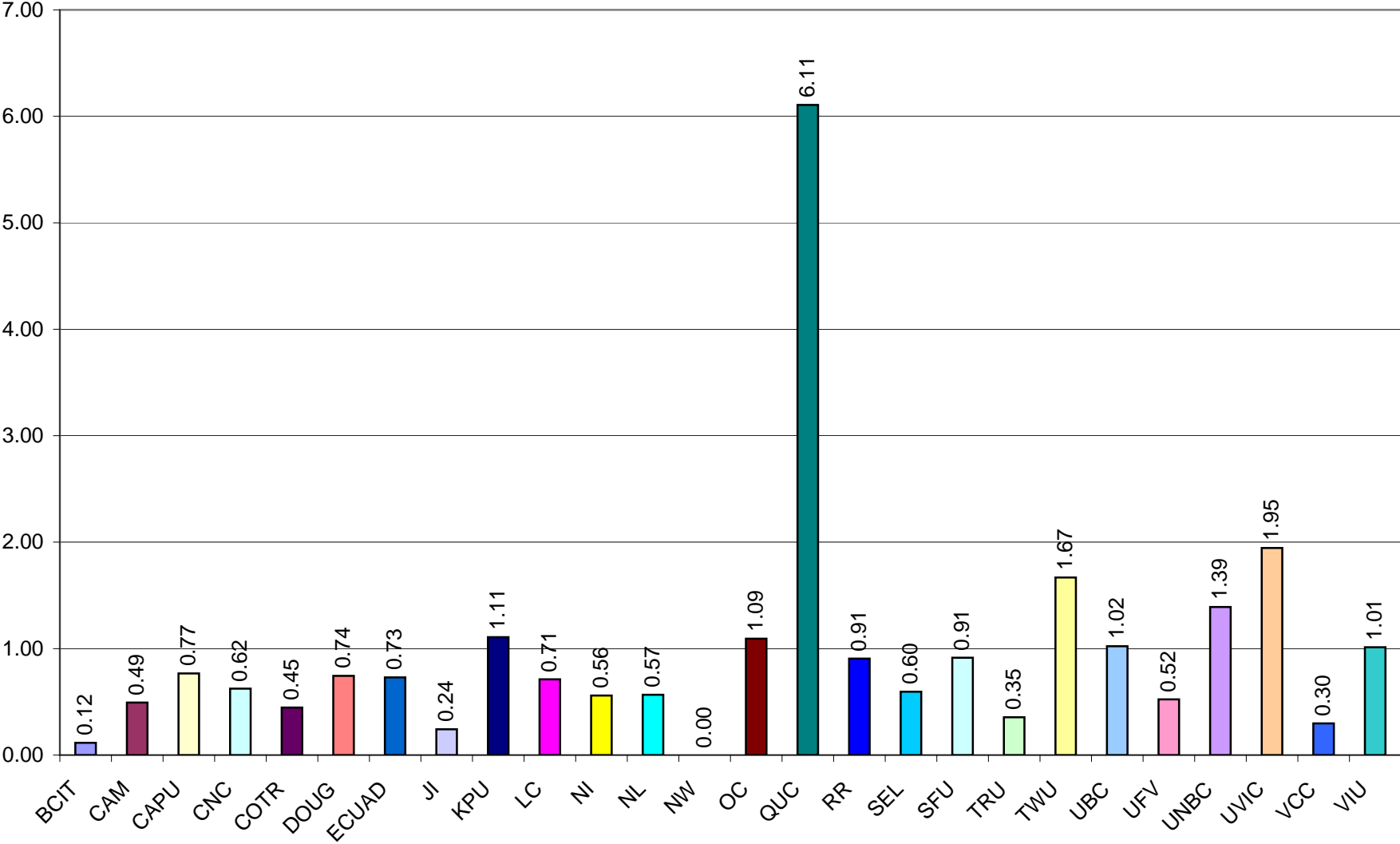
m) Reference Transactions per FTE Student: 6a(iii)/3(f)



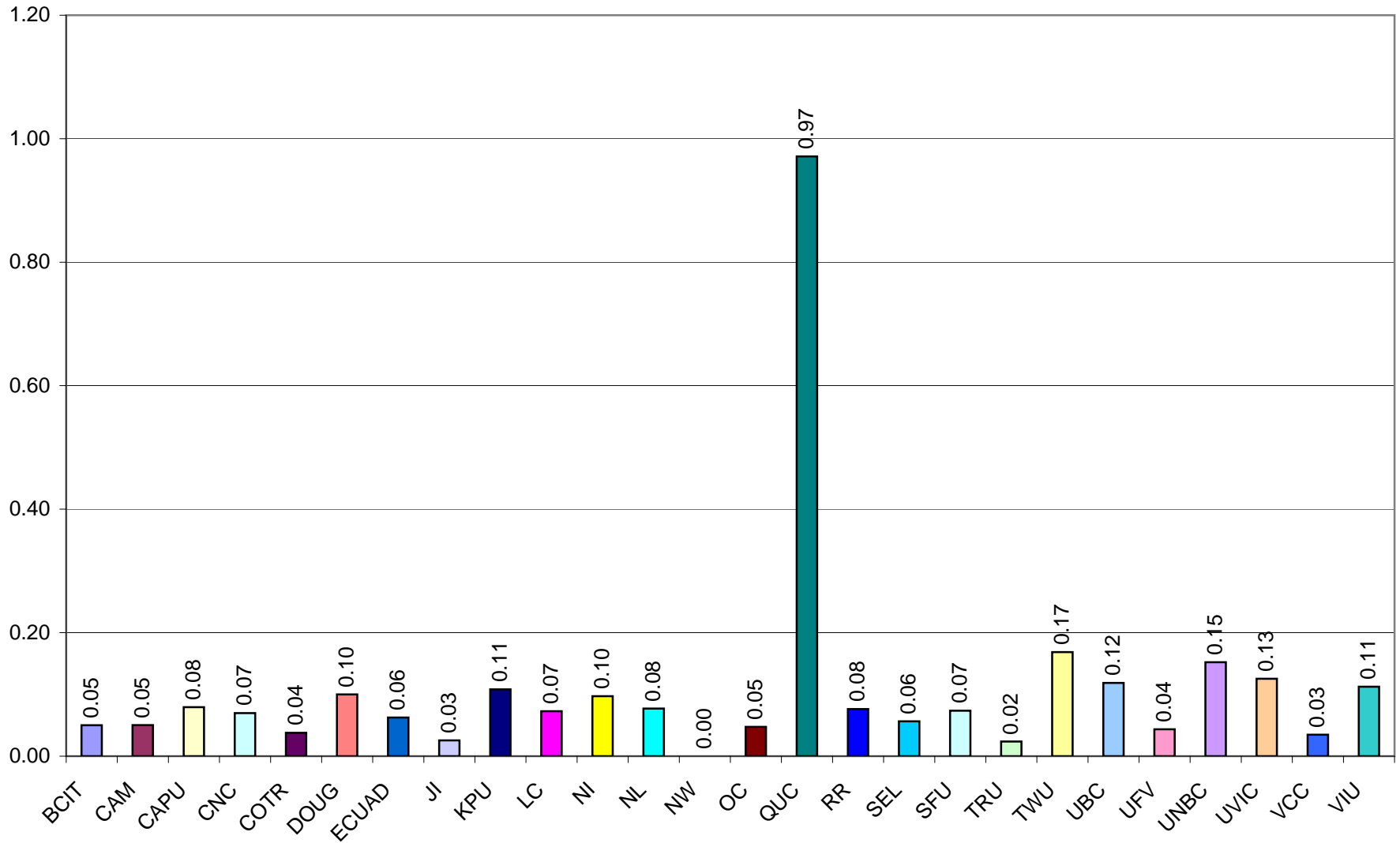
n) Number of Students Instructed per FTE Student: 6(b)/3(f)



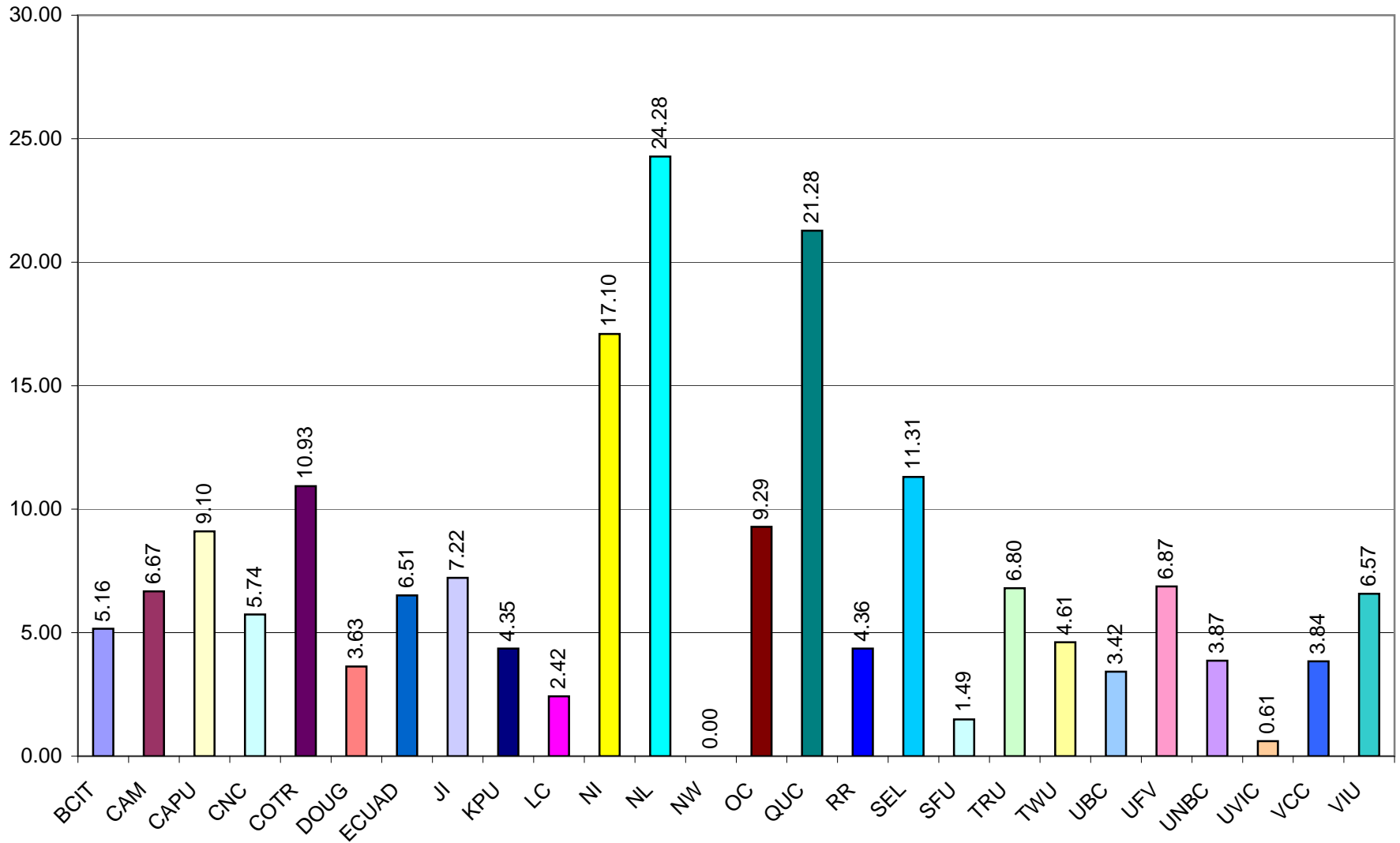
o) Total Library Area per FTE Student: 9(e) total/3(f)



p) Number of Seats per FTE Student: 9(f) total/3(f)



q) Hours Open per FTE Personnel: 9(g) total/4(f)



r) Reference Hours per Total Open Hour: 9(h) total/9(g)

