



CPSLD Statistics Report

2011 - 2012

Created by:
Vancouver Community College
Library and Learning Resources



ACKNOWLEDGEMENTS

On behalf of CPSLD members, I would once again like to extend our gratitude to Corinna Luk, Senior Secretary, Library & Learning Resources, Vancouver Community College for her patience, time, expertise and ongoing commitment to the completion of the annual CPSLD Statistics Report.

This year's statistics include some significant additions, which in turn required significant changes to the spreadsheet used to collect the data and generate the report. I am very grateful to Deidre Lowe, Serials Assistant at BCIT, who used her considerable knowledge of Excel to accomplish this task. Thank you as well to David Pepper, Library Director, and Kathleen Dutchak, Librarian, Library Systems & Technical Services, for releasing Deidre from her regular duties to work on this project.

Thank you to Vancouver Community College and Tim Atkinson, Director of Library and Learning Resources, for their continued support of the compilation and distribution of the CPSLD Statistics.

I would also like to acknowledge the help of Randy Brown, Senior Coordinator, Post-Secondary Funding and Corporate Finance Branch, BC Ministry of Advanced Education, who provided us with FTE statistics.

Kim Isaac, University Librarian
University of the Fraser Valley
Chair, CPSLD Statistics Committee 2011-12

CPSLD STATISTICS REPORT
2011/2012

COUNCIL OF POST-SECONDARY LIBRARY DIRECTORS OF B.C.
LIBRARY/LEARNING RESOURCES CENTRE SURVEY

DEFINITIONS	PAGE 1 to 7
SURVEY	PAGE 1 to 3
LEGEND	PAGE 1
DATA	PAGE 25
RATIOS	PAGE 26
NOTES	PAGE 27 to 28
GRAPHS	PAGE 29 to 48

COUNCIL OF POST-SECONDARY LIBRARY DIRECTORS B.C. LIBRARY/LEARNING RESOURCE CENTRE SURVEY

DEFINITIONS (Revised June 28, 2012)

INTRODUCTION

This annual statistical survey is intended to provide a picture of the holdings and activities of Libraries in colleges, university/colleges, institutes, and universities of British Columbia for the fiscal year (**April 1 - March 31**). All information is based on the total count for one year.

The following activity, although under library jurisdiction in many institutions, is **excluded** from this report:

- audio-visual equipment distribution to classrooms
- audio-visual equipment maintenance
- media production or instructional media services.

A word of caution:

Comparison among institutions should be made with the understanding that each library operates somewhat differently and counts activities within a context unique to the institution. In addition, as access to electronic information becomes more important, holdings information is not always readily quantifiable or entirely meaningful and expenditure information is not found within the same budget categories in each institutional library.

Note: Do not add text into any field that will be totalled automatically as this will prevent the system from performing this addition.

Note: use the "Explanatory Notes" section at the bottom of the survey to provide additional information or any variations from the norm.

1. TYPE OF LIBRARY

Self-explanatory.

2. NUMBER OF CAMPUSES

Differentiate between those centres which have library staffing from those which are characterized as reading rooms and/or learning centres which have no staff or may have staff paid for by other parts of the institution.

- a. Number of campuses **with** library staff
- b. Number of campuses **without** library staff

3. USERS

FTE students: for sections a - f, this data will be completed for you based on data supplied by the Ministry of Advanced Education

g. FTE faculty:

- Provide FTE (not head count) of faculty employees (include librarians if applicable); approximate if actual number is not available;

Community Borrower Fee:

- Do not include the number of community borrowers as this figure does not represent active users for many institutions; provide only the annual fee if applicable.

h. Is there a community borrowers fee?

i. \$\$ amount

4. LIBRARY PERSONNEL

- Count all personnel in FTE terms (not head-counts);
- a. FTE librarians:**
- include all part-time and contract librarian hours;
 - include Library Director whether this is an administrative position or not;
 - include any positions funded by special grants;
- b. FTE library staff:**
- exclude personnel who are entirely devoted to AV equipment and media production/IMS activities;
- c. FTE other professionals**
- Include staff members who are not librarians in the strict sense of the terms such as computer experts, systems analysts or budget officers.
- d. Subtotal – FTE Library Personnel: (system will total automatically)**
- provide subtotal of personnel before counting student aides and work-study employees;
- e. FTE student aides:**
- include student aides and work-study employees
- f. Total FTE Library Personnel: (system will total automatically)**

5.1. COLLECTIONS - PHYSICAL

- **Volumes:** items that are barcoded separately or intended to be circulated as one unit, (e.g. a 20-volume set of encyclopedias = 20 units, 2 CDs plus booklet in one package = 1 unit; book plus CD = 1 unit; set of slides in a binder or a folio = 1 unit).
- a. Monographs:**
- a volume is a physical unit of any printed or processed work contained in one binding, encasement or other clear distinction, which has been catalogued as part of the collection and given an individual barcode;
 - **include** titles in microform or CD (not individual cards of fiche except when 1 card = 1 title);
 - **include** annuals;
 - **exclude** periodicals;
 - use explanatory notes for any unusual inclusions (e.g. documents, technical reports, individually catalogued maps).
- b. Videos & Films:**
- count all physical video & film formats;
 - count physical items (e.g. 2 film reels = 2 units, series of 24 videos = 24 units);

c. Other Audio formats:

- count all physical sound recordings (e.g. LP records, cassette tapes, compact disks);
- count items intended to be used together as one unit (e.g. opera on 2 CDs = 1 unit);
- if two or more media are included (e.g. print and cassette tape), count as a single unit all items to be used in conjunction with each other.

d. Other Visual formats:

- count all physical visual formats (e.g. slides, snapshots)
- do not count individual slides unless they do not form part of a set (i.e. 1 slide set = 1 unit);
- if two or more media are included (e.g. print & slides), count as a single unit all items meant to be used in conjunction with each other.

e. Back Issues Periodicals:

- **include** journals, magazines, and newspapers received in print, microform, or CD formats;
- count volumes if they are known, otherwise 1 year = 1 volume;
- **include** annual index volumes.

f. Total Volumes in Library Collection: (system will total automatically)

- add $a + b + c + d + e = f$

Periodicals

g. Total Current Print Subscriptions:

- count titles of journals, magazines, and newspapers currently received in print, microform, or CD formats (e.g. Canadian Newdisc = 8 titles);
- **exclude** annuals (counted in **a**) above);
- **include** gift subscriptions and those being received on exchange;
- **include** departmental subscriptions only if they are accessible to the college community (i.e. listed in library catalogue and available for use);
- count duplicate subscriptions (i.e. if the library subscribes to two copies of a title count 2);
- **include** Statistics Canada periodicals if they are treated like a periodical;
- **exclude** subscriptions to electronic periodical indexes and abstracts.

5.2 COLLECTIONS – ELECTRONIC

a. Electronic Monographs:

- Count the titles that would be monographs if issued in print format, i.e. non-serial publications of any length issued in electronic format instead of or in addition to, print format. Include books owned or leased by the library. Government publications are included as are free monographs on the Web catalogued in the OPAC or specifically linked to the library's web site

b. Streaming Media:

- Count streaming videos or other media listed in the library catalogue or linked to the library's web site, whether purchased, leased or free on the Web.

c. Electronic Serial Titles:

- Report the total number of unique electronic serial titles that you currently acquire and to which you provide access.
- Include both purchased and non-purchased titles
- Do not include duplicate counts of serial titles; report each title once, regardless of how many subscriptions or means of access you provide for that title – i.e. if a title is accessible through multiple databases, count it only once
- Include titles from aggregated packages
- Electronic serials acquired as part of a bundle or an aggregated package should be counted at the title level, even if they are not catalogued, as long as the title is made accessible directly by the library (e.g. through a finding aid)

d. Total Electronic Titles in Collection: (system will total automatically)

- add $a + b + c = d$

6. USE

a. Reference transactions:

An information contact that involves the knowledge, use, recommendations, interpretation or instruction in the use of one or more information sources by a member of the library staff. Information sources include printed and non-printed materials, machine-readable databases (including computer-assisted instruction), catalogues and other holdings, records and, through communication or referral, other libraries and institution, and persons both inside and outside the library. Include information and referral services. If a contact includes both reference and directional services, it should be reported as one reference transaction. When a staff member utilizes information gained from a previous use of information sources to answer a question, report as a reference transaction, even if the source is not consulted again during this transaction. Duration should not be an element in determining whether a transaction is a reference transaction. Sampling of a typical week may be used to extrapolate for a full year. (CARL definition).

- count all questions handled (i.e. regular, and extended reference questions);
- **include** questions associated with electronic searching;
- **include** electronic reference questions
- **include** real-time-reference interactions (i.e. virtual reference, AskAway)
- **exclude** questions associated specifically with a bibliographic instruction class.
- **exclude** directional questions as these will be counted separately

This is the way this question will appear on the stats collection form

6a (i) Reference questions

6a (ii) Directional questions

6a (iii) Total

Library Instruction

b. Number of participants at group presentations:

- Report total number of participants in the presentations - count all students receiving bibliographic instruction whether in tutorial groups, tours, or library skills classes
- Personal one-on-one instruction in the use of sources should be counted as a reference transaction

Presentations to groups

- c. **Number of presentations to groups** - Report the total number of library instruction sessions during the year. Count sessions presented as part of formal bibliographic instruction programs including class presentations, orientation sessions and tours. If the library sponsors multi-session credit courses that meet several times over the course of a semester, each session should be counted. Presentations both on and off the premises should be included when they are sponsored by the library. If you are using sampling, please include a footnote
- **include** internet research or database searching classes;
 - **include** classes taught to faculty and other employee groups.

Circulation

d. **Direct:**

- count all items which are charged out for use, whether the use is inside (e.g. reserve) or outside the library;
- **include** self/online renewals
- **exclude** items charged out to other libraries on interlibrary loan (included in g) below).

e. **In-library use:**

- count those items being used in the library and re-shelved by library employees, but that have not been charged out for use in the direct circulation transaction.

f. **Gate Count:**

- Count all traffic upon exit from the library (usually provided via an electric eye on the library security system)

Interlibrary loan

- count all items actually received and sent via interlibrary loan;
- **include** items received or sent via any delivery method and from or to any type of library (including agencies with library holdings) in any part of the world;
- all NET, MEC, OJAC, and filesaver project figures are supplied by the ELN office;
- **exclude** intercampus loans within your institution.

g. **Interlibrary loans received** (include all formats):

h. **Interlibrary loans sent** (include all formats):

7. LIBRARY EXPENSES (capital & operating)

For purposes of consistency “expenditures” means actual expenditures vs budgeted expenditures.

a. **Personnel (salaries & benefits):**

- count all salary & benefit expenditures for library personnel as listed in 4 above;
- **exclude** personnel not covered by this survey (e.g. AV equipment distribution, Media Production or IMS);
- **include** personnel working under special grant funding.

Collections - Physical

b. **Monographs:**

- count all expenditures on items listed as monographs in 5.1a above;

- c. **Audio-Visual:**
 - count all expenditures on items listed in **5.1b +5.1c + 5.1d** above:
- d. **Current Print Periodicals:**
 - count all expenditures on current subscriptions to print periodicals and indexes as included in **5.1g** above.
- e. **Subtotal Physical Collections: (system will total automatically)**
 - add $b + c + d = e$
- Collections – Electronic**
- f. **Electronic Monographs**
 - count all expenditures on items listed in 5.2a above;
- g. **Streaming Media**
 - count all expenditures on items listed in 5.2b above;
- h. **Electronic Serial Titles**
 - count all expenditures on items listed in 5.2c above;
- i. **Subtotal Electronic Collections: (system will total automatically)**
 - add $f + g + h = i$
- j. **Special Funding Envelopes for Collections**
 - **Include** all expenditures from special funding sources e.g. one time capital grants
- k. **Total Collections Expenditures: (system will total automatically)**
 - add $e + i + j = k$
- l. **Other:**
 - count all other library expenditures (i.e. those expenditures that are not related to personnel and collections);
 - **include** only those other costs (e.g. printing, postage, interlibrary loans, mileage, conferences, supplies, etc.) if they are paid by the library's budget;
 - use explanatory notes to indicate any variations from the norm.
- m. **Total Library Expenditures: (system will total automatically)**
 - add $a+k+l = m$

8. INSTITUTIONAL BUDGET

- a. **base ministry grant** as outlined in the grant allocation sent by the ministry to each institution in March (usually) for the next fiscal year;
- b. **Other operating revenues as reported from Audited Financial Statement for institution**
 - **include** all items that are considered in calculating your institution's operating budget;
 - **exclude** institutional capital (i.e. new building funds, upgrading of present buildings, roads etc.)

- use explanatory notes to provide details on any exceptions or variations from the norm.
- c. Total Institutional Budget: (system will total automatically)**
- **a+b**

9. FACILITIES & HOURS (system will tally automatically for all sections)

a. Total library area in square meters

- for each campus with library personnel provide library area in square meters (to convert from square ft. to square meters multiply sq. ft. by .0929, e.g. 30,000 sq. ft. x .0929 = 2787 sq. meters);
- **include** space for books and other library materials, space for storage of AV equipment if control of this equipment is the library's responsibility, library classrooms, study stations, seminar and study rooms, and workspace for library personnel;
- **exclude** areas used solely for janitorial, custodial and mechanical storage or services, lobbies, vestibules, building corridors, and other general access areas;
- add figures for each library to provide total for **e**.

b. Total number of seats:

- for each campus with library personnel count all study spaces for library users;
- **include** seats at computer workstations, equipment carrels, etc. **exclude** seats in staff areas, offices, meeting rooms, and other areas not normally occupied by users of library materials;
- add figures for each library to provide total for **f**.

c. Total hours open per week: (September – April)

- for each campus with library personnel count total operating hours per week;
- add figures for each library to provide total for **g**.

d. Total reference hours per week: (September – April)

- for each campus with library personnel count total hours of reference service provided;
- add figures for each library to provide total for **h**.

10. COMPUTING INFRASTRUCTURE

NOTE: Other than (a), questions noted below will vary over time and may not be applicable for historical comparisons.

a. Number of public workstations

- For each campus library, count all public workstations that have Internet access (these are also counted in 9b above as part of the seat count)

11. LIBRARY AUTOMATED SYSTEMS

- Self-explanatory;
- use explanatory notes for any variations.

2011-12: Add the following columns:

- Discovery Service (e.g. Summon, Ebsco Discovery Service, Primo)
- ERM: Electronic Resource Management (e.g. CUFTS)
- Link Resolver (e.g. SFX, CUFTS/Godot)

**COUNCIL OF POST-SECONDARY LIBRARY DIRECTORS B.C.
LIBRARY/LEARNING RESOURCE CENTRE SURVEY
WORKSHEET FOR 2011/12**

Please note that this is a worksheet for your use only; your library's submission should be on the Excel spreadsheet provided separately.

1. TYPE OF LIBRARY:

2. NUMBER OF CAMPUSES

- a. Number of campuses **with** library staff:
- b. Number of campuses **without** library staff:

3. USERS

FTE students: for sections a - f, this data will be completed for you based on data supplied by the Ministry of Advanced Education

g. FTE faculty:

Community Borrower Fee:

h. Is there a community borrowers fee?

i. \$\$ amount:

4. LIBRARY PERSONNEL

a. FTE librarians:

b. FTE library staff:

c. FTE other professionals:

d. Subtotal – FTE Library Personnel: (system will total automatically)

e. FTE student aides:

f. Total FTE Library Personnel: (system will total automatically)

5.1. COLLECTIONS - PHYSICAL

a. Monographs:

b. Videos & Films:

c. Other Audio formats:

d. Other Visual formats:

e. Back Issues Periodicals:

f. Total Volumes in Library Collection: (system will total automatically)

Periodicals:

g. Total Current Print Subscriptions:

5.2 COLLECTIONS – ELECTRONIC

a. Electronic Monographs:

b. Streaming Media:

c. Electronic Serial Titles:

d. Total Electronic Titles in Collection: (system will total automatically)

6. USE

a. Reference transactions:

6a (i) Reference questions:

6a (ii) Directional questions:

6a (iii) Total:

Library Instruction

b. Number of participants at group presentations:

Presentations to groups

c. Number of presentations to groups:

Circulation

d. Direct:

e. In-library use:

f. Gate Count:

Interlibrary loan

g. Interlibrary loans received:

h. Interlibrary loans sent:

7. LIBRARY EXPENSES (capital & operating)

a. Personnel (salaries & benefits):

Collections - Physical

b. Monographs:

c. Audio-Visual:

d. Current Print Periodicals:

e. Subtotal Physical Collections: (system will total automatically)

- Collections – Electronic**
- f. Electronic Monographs:**
 - g. Streaming Media:**
 - h. Electronic Serial Titles:**
 - i. Subtotal Electronic Collections: (system will total automatically)**
 - j. Special Funding Envelopes for Collections:**
 - k. Total Collections Expenditures: (system will total automatically)**
 - l. Other:**
 - m. Total Library Expenditures: (system will total automatically)**

8. INSTITUTIONAL BUDGET

- a. Base ministry grant:**
- b. Other operating revenues as reported from Audited Financial Statement for institution:**
- c. Total Institutional Budget: (system will total automatically)**

9. FACILITIES & HOURS (system will tally automatically for all sections)

- a. Total library area in square meters:**
- b. Total number of seats:**
- c. Total hours open per week: (September – April):**
- d. Total reference hours per week: (September – April):**

10. COMPUTING INFRASTRUCTURE

- a. Number of public workstations:**

11. LIBRARY AUTOMATED SYSTEMS

- Cataloguing:
- Primary source of bibliographic records:
- Secondary source of bibliographic records:
- OPAC:
- Periodicals Check In:
- Acquisitions:
- Interlibrary Loans:
- Discovery Service (e.g. Summon, Ebsco Discovery Service, Primo):
- ERM: Electronic Resource Management (e.g. CUFTS):
- Link Resolver (e.g. SFX, CUFTS/Godot):

LEGEND

BCIT	BRITISH COLUMBIA INSTITUTE OF TECHNOLOGY
CAM	CAMOSUN COLLEGE
CAPU	CAPILANO UNIVERSITY
CNC	COLLEGE OF NEW CALEDONIA
COTR	COLLEGE OF THE ROCKIES
DOUG	DOUGLAS COLLEGE
ECUAD	EMILY CARR UNIVERSITY OF ART AND DESIGN
JI	JUSTICE INSTITUTE OF B.C.
KPU	KWANTLEN POLYTECHNIC UNIVERSITY
LC	LANGARA COLLEGE
NI	NORTH ISLAND COLLEGE
NL	NORTHERN LIGHTS COLLEGE
NW	NORTHWEST COMMUNITY COLLEGE
OC	OKANAGAN COLLEGE
QUC	QUEST UNIVERSITY CANADA
RR	ROYAL ROADS UNIVERSITY
SEL	SELKIRK COLLEGE
SFU	SIMON FRASER UNIVERSITY
TRU	THOMPSON RIVERS UNIVERSITY
TWU	TRINITY WESTERN UNIVERSITY
UBC	UNIVERSITY OF BRITISH COLUMBIA
UFV	UNIVERSITY OF THE FRASER VALLEY
UNBC	UNIVERSITY OF NORTHERN BRITISH COLUMBIA
UVIC	UNIVERSITY OF VICTORIA
VCC	VANCOUVER COMMUNITY COLLEGE
VIU	VANCOUVER ISLAND UNIVERSITY

1. LIBRARY					2. NUMBER OF CAMPUSES	
					a	b
	Name of Library	Name of Library Director	Statistics contact	Library Type	No. of Campuses with Library Staff	No. of Campuses without Library Staff
BCIT	BCIT	David Pepper	David Pepper	Institute	3	2
CAM	Camosun College	Sybil Harrison	Sybil Harrison	College	2	0
CAPU	Capilano University	Grace Makarewicz	Dianne Cottrell	University	1	2
CNC	College of New Caledonia	Katherine Plett	Katherine Plett	College	4	2
COTR	College of the Rockies	Shahida Rashid	Shahida Rashid	College	1	5
DOUG	Douglas College	Debbie Schachter	Debbie Schachter	College	2	0
ECUAD	Emily Carr University of Art & Design	James Rout	James Rout	University	1	0
JI	Justice Institute of B.C.	April Haddad	April Haddad	Institute	1	6
KPU	Kwantlen Polytechnic University	Todd Mundle	Ann McBurnie	University	4	0
LC	Langara College	Patricia Cia	Patricia Cia	College	1	0
NI	North Island College	Mary Anne Guenther	Mary Anne Guenther	College	4	0
NL	Northern Lights College	Janet H. Beavers	Janet H. Beavers	College	3	4
NW	Northwest Community College	Melanie Wilke	Melanie Wilke	College	3	3
OC	Okanagan College	Ross Tyner	Ross Tyner	College	4	0
QUC	Quest University Canada	Venessa Wallsten	Venessa Wallsten	University	1	0

1. LIBRARY					2. NUMBER OF CAMPUSES	
					a	b
	Name of Library	Name of Library Director	Statistics contact	Library Type	No. of Campuses with Library Staff	No. of Campuses without Library Staff
RR	Royal Roads University	Rosie Croft	William Meredith	University	1	0
SEL	Selkirk College	Gregg Currie	Gregg Currie	College	3	5
SFU	Simon Fraser University	Charles Eckman	Natalie Gick	University	3	0
TRU	Thompson Rivers University	Kathy Gaynor	Joanne Matthews	University	2	0
TWU	Trinity Western University	Ted Goshulak	Ted Goshulak	University	1	0
UBC	University of British Columbia	Ingrid Parent	Jeremy Buhler	University	2	0
UFV	University of the Fraser Valley	Kim Isaac	Kim Isaac	University	3	3
UNBC	University of Northern British Columbia	Lynn Copeland	Heather Empey	University	1	4
UVIC	University of Victoria	Jonathan Bengston	Chelsea Garside	University	1	0
VCC	Vancouver Community College	Tim Atkinson	Tim Atkinson	College	2	0
VIU	Vancouver Island University	Bob Foley	Kathleen Reed	University	3	1

3. USERS

	a	b	c	d	a+c=e	b+d=f	g	h	i
	FTE Students: NOTE - for sections a - f, this data has been completed for you based on the data supplied by the Ministry of Advanced Education						Faculty	Community Borrowers	
	FTE AVED Ministry funded	FTE Students (audited)	ITA (Foundation + Apprenticeship) Funded	ITA (Foundation + Apprenticeship) Actual	Service plan total funded	Service plan total Actual	FTE faculty	Is there a Community Borrowers fee?	Fee \$\$ amount
BCIT	11,801.00	12,682.20	5,387.00	6,217.90	17,188.00	18,900.10	12,682.00	Yes	50
CAM	7,157.00	7,090.50	1,759.00	2,076.60	8,916.00	9,167.10	486.09	No	
CAPU	5,450.00	5,519.30			5,450.00	5,519.30	382.24	Yes	25
CNC	3,106.00	2,277.50	1,198.00	1,211.90	4,304.00	3,489.40	250.00	No	
COTR	1,758.00	1,769.50	519.00	512.50	2,277.00	2,282.00	112.75	N/A	N/A
DOUG	8,360.00	8,568.10	27.00	9.00	8,387.00	8,577.10	458.00	Yes	25
ECUAD	1,391.00	1,457.00			1,391.00	1,457.00	100.50	Yes	60
JI	2,395.00	2,743.90			2,395.00	2,743.90	110.00	No	
KPU	9,170.00	9,329.10	1,030.00	1,209.20	10,200.00	10,538.30	652.36	Yes	60
LC	7,056.00	7,592.00			7,056.00	7,592.00	410.80	Semi-annual	15
NI	2,224.00	1,897.90	557.00	530.70	2,781.00	2,428.60	153.00	No	
NL	1,488.00	900.60	522.00	512.10	2,010.00	1,412.70	75.00	No	
NW	1,696.00	1,270.80	386.00	344.20	2,082.00	1,615.00	123.14	No	
OC	4,797.00	5,315.10	2,069.00	2,049.90	6,866.00	7,365.00	403.90	Yes	20
QUC		400.00			-	400.00	26.00	N/A	

3. USERS

	a	b	c	d	a+c=e	b+d=f	g	h	i
	FTE Students: NOTE - for sections a - f, this data has been completed for you based on the data supplied by the Ministry of Advanced Education						Faculty	Community Borrowers	
	FTE AVED Ministry funded	FTE Students (audited)	ITA (Foundation + Apprenticeship) Funded	ITA (Foundation + Apprenticeship) Actual	Service plan total funded	Service plan total Actual	FTE faculty	Is there a Community Borrowers fee?	Fee \$\$ amount
RR	1,980.00	2,329.50			1,980.00	2,329.50	53.00	Yes	25
SEL	2,350.00	1,904.00	437.00	409.10	2,787.00	2,313.10	190.00	No	
SFU	20,215.00	22,795.80			20,215.00	22,795.80	939.10	Yes	100
TRU	8,018.00	7,753.70	1,199.00	1,295.90	9,217.00	9,049.60	523.00	Yes	25
TWU		2,156.00			-	2,156.00	125.00	Yes	60
UBC	42,016.00	44,575.20			42,016.00	44,575.20	6,053.00	Yes	120
UFV	6,677.00	7,014.30	386.00	479.90	7,063.00	7,494.20	490.00	Yes	25
UNBC	3,455.00	2,883.90			3,455.00	2,883.90	193.00	yes	25
UVIC	16,528.00	16,792.00			16,528.00	16,792.00	825.7	Yes	50
VCC	6,512.00	6,123.50	1,557.00	1,420.70	8,069.00	7,544.20	442.40	No	
VIU	6,672.00	6,091.20	1,203.00	1,018.20	7,875.00	7,109.40	495.48	Yes	25

	4. LIBRARY PERSONNEL					
	a	b	c	a+b+c=d	e	d + e = f
	FTE Librarians	FTE Library Staff	FTE Other Professionals	FTE Personnel (system will total automatically)	FTE Student Aides	Total Personnel in FTE (system will total automatically)
BCIT	10.00	20.11	2.00	32.11		32.11
CAM	5.50	12.38		17.88	0.25	18.13
CAPU	7.12	12.72		19.84		19.84
CNC	4.00	8.20		12.20		12.20
COTR	1.40	5.10		6.50		6.50
DOUG	10.80	26.00		36.80		36.80
ECUAD	3.60	7.14		10.74	0.38	11.12
JI	5.00	3.20		8.20	0.00	8.20
KPU	16.50	36.60	1.72	54.82	1.22	56.04
LC	9.60	16.00	1.00	26.60	0.74	27.34
NI	2.00	7.50		9.50	1.00	10.50
NL	2.00	4.50		6.50		6.50
NW	2.90	5.60		8.50	0.29	8.79
OC	9.00	22.00		31.00	2.00	33.00
QUC	2.00	2.00		4.00	2.00	6.00

	4. LIBRARY PERSONNEL					
	a	b	c	a+b+c=d	e	d + e = f
	FTE Librarians	FTE Library Staff	FTE Other Professionals	FTE Personnel (system will total automatically)	FTE Student Aides	Total Personnel in FTE (system will total automatically)
RR	4.80	7.50	3.00	15.30		15.30
SEL	3.00	5.80		8.80		8.80
SFU	44.74	79.54	15.00	139.28	8.56	147.84
TRU	9.79	13.70		23.49	0.60	24.09
TWU	6.00	3.50	1.00	10.50	4.00	14.50
UBC	91.40	156.76	40.46	288.62	34.90	323.52
UFV	8.30	14.45		22.75	0.65	23.40
UNBC	7.00	15.50	2.00	24.50	2.35	26.85
UVIC	32.00	89.00	14.00	135.00	10.56	145.56
VCC	8.50	20.90		29.40	0.55	29.95
VIU	9.00	16.95		25.95	0.30	26.25

5. COLLECTIONS												
	a	b	c	d	e	a+b+c+d+e = f	g	a	b	c	a+b+c=d	
	5.1 COLLECTIONS - PHYSICAL							5.2 COLLECTIONS - ELECTRONIC				
	Monographs	Videos & Films	Other Audio Formats	Other Visual Formats	Back Issues Periodicals	Total Volumes in Library Collection (system will total automatically)	Total Current Print Subscriptions	Electronic Monographs	Streaming Media	Electronic Serial Titles	Total Electronic Titles in Collection (system will total automatically)	
BCIT	161,093	10,070	419		14,375	185,957	377	33,139	21	25,111	58,271	
CAM	50,472	3,718	82	8	45,551	99,831	255	32,944	75	156	33,175	
CAPU	107,901	5,570	3,417		18,893	135,781	337	13,358	88,608	57,947	159,913	
CNC	150,556	9,940	383	217	22,595	183,691	383	8,243	15	37,175	45,433	
COTR	46,354	5,034	68	159	3,802	55,417	66	1,469	543	69,281	71,293	
DOUG	158,514	13,080	7,763	331	13,966	193,654	841	4,919	536	6,930	12,385	
ECUAD	45,270	4,165	855	143,646	4,714	198,650	221	18,804		20	18,824	
JI	20,245	4,034	160	36	4,717	29,192	149	1,388	33	20,040	21,461	
KPU	190,073	8,840	2,273	446	16,546	218,178	664	36,155	4862	36,617	77,634	
LC	88,002	9,878	852			98,732	251	58,355	1,476	26,501	86,332	
NI	31,731	2,715	34		1,141	35,621	240	106,289	3,774	38,000	148,063	
NL	29,540	4,055	46	20	1,059	34,720	150	16,650	5,750	60,320	82,720	
NW	53,900	6,436	210	1,108	24,300	85,954	202	1,743	207	34,033	35,983	
OC	139,393	10,606	565	40		150,604	363	47,749	85	64,437	112,271	
QUC	9,500	597			3,435	13,532	67	123,000			123,000	

5. COLLECTIONS												
	a	b	c	d	e	a+b+c+d+e = f	g	a	b	c	a+b+c=d	
	5.1 COLLECTIONS - PHYSICAL							5.2 COLLECTIONS - ELECTRONIC				
	Monographs	Videos & Films	Other Audio Formats	Other Visual Formats	Back Issues Periodicals	Total Volumes in Library Collection (system will total automatically)	Total Current Print Subscriptions	Electronic Monographs	Streaming Media	Electronic Serial Titles	Total Electronic Titles in Collection (system will total automatically)	
RR	50,912	619			11,736	63,267	88	130,141	1,922	53,665	185,728	
SEL	59,870	3,358	629	9	9,000	72,866	276	6,115	8,772	13	14,900	
SFU	2,391,099	13,527	14,525	228,990	296,151	2,944,292	3,872	810,437	2,488,479	52,253	3,351,169	
TRU	214,339	12,009	1,148	407	30,347	258,250	271	53,215	262	30,533	84,010	
TWU	220,941	4,417	1,115		86,000	312,473	740	122,406	8	13,435	135,849	
UBC	4,504,957	29,469	65,566	214,944	719,827	5,534,763	7,005	943,945		205,237	1,149,182	
UFV	172,301	9,692	381	583	28,910	211,867	456	138,502	3,061	64,379	205,942	
UNBC	398,295	4,334	183	460		403,272	429	95,493	5,369	54,723	155,585	
UVIC	1,734,365	12,375	73,580		349,740	2,170,060	6,651	510,124	103,359	127,606	741,089	
VCC	58,414	8,379	5,921	3	10,321	83,038	220	1,606	265	39,779	41,650	
VIU	275,295	8,754	5,705	378		290,132	141	299,412	7,031	67,092	373,535	

6. USE										
	a (i)	a (ii)	a(i)+a(ii)=a (iii)	b	c	d	e	f	g	h
	Reference Transactions			Library Instruction		Circulation				
	Reference Questions	Directional questions	Total Reference Transactions (will total automatically)	Number of Participants at group presentations	Number of Presentations to groups	Circulation: Direct	Circulation: In-Library Use	Gate Count	Interlibrary loans received (include all formats)	Interlibrary loans sent (include all formats)
BCIT	9,246	2,672	11,918	4,532	230	58,030	18,018	740,688	1,037	770
CAM	8,039	8,981	17,020	5,651	222	36,935	4,321	522,357	948	508
CAPU	4,148	2,508	6,656	3,663	152	38,028		381,432	620	636
CNC	13,832		13,832	1,779	112	19,585	17,627	167,563	429	418
COTR	1,857	2,236	4,093	700	52	10,659	1,434	122,369	128	191
DOUG	13,674	9,099	22,773	8,369	321	186,611	6,930	728,353	1,319	1,104
ECUAD	273	1,263	1,536	398	25	30,926		127,022	110	251
JI	1,935	1,419	3,354	874	69	2,395	450	38,792	86	543
KPU	20,435	20,943	41,378	9,045	359	62,954	18,120	1,006,181	1,491	728
LC	13,222	6,022	19,244	8,836	327	55,535	27,588	606,208	1,638	767
NI	3,086		3,086	1,770		14,479	3,370	146,007	973	299
NL	675	4,268	4,943	533	59	5,597		71,373	323	158
NW	1,474	2,715	4,189	893	76	13,009		73,099	504	341
OC	10,270	4,978	15,248	6,294	304	61,042		402,746	1,445	473
QUC	565	1,135	1,700	720	36	2,378	1,414	102,910	370	

6. USE										
	a (i)	a (ii)	a(i)+a(ii)=a (iii)	b	c	d	e	f	g	h
	Reference Transactions			Library Instruction		Circulation				
	Reference Questions	Directional questions	Total Reference Transactions (will total automatically)	Number of Participants at group presentations	Number of Presentations to groups	Circulation: Direct	Circulation: In-Library Use	Gate Count	Interlibrary loans received (include all formats)	Interlibrary loans sent (include all formats)
RR	4,816	3,599	8,415	1,910	62	18,274	798	48,350	766	274
SEL	1,701		1,701	796	55	10,612	2,156	89,176	240	315
SFU	51,455	71,120	122,575	34,999	977	584,845	138,134	2,076,898	9,821	11,058
TRU	9,989	6,519	16,508	4,148	208	73,245	11,773	183,266	2,063	223
TWU	3,633	250	3,883	2,500	45	90,258		176,357	892	310
UBC	92,909	49,210	142,119	39,658	1,610	1,814,063		3,937,179	10,139	27,558
UFV	13,282	9,982	23,264	7,200	288	75,713	13,029		2,054	862
UNBC	2,020	680	2,700	3,077	141	45,245		7,398	2,895	1,150
UVIC	33,016	22,829	55,845	7,188	372	344,125	111,706	1,344,467	8,560	7,466
VCC	20,969	7,413	28,382	4,794	242	76,474	28,743	312,854	615	622
VIU	11,700		11,700	3,126	157	63,626		341,864	3,371	1,119

7. LIBRARY EXPENSES (CAPITAL AND OPERATING)

	a	b	c	d	b + c + d = e	f	g	h	f + g + h = i
		Collections - Physical				Collections - Electronic			
	Personnel (Salaries and benefits)	Monographs	Audio-Visual	Current Print Periodicals	Subtotal Physical Collections (system will total automatically)	Electronic Monographs	Streaming Media	Electronic Serial Titles	Subtotal Electronic Collections (system will total automatically)
BCIT	2,407,636.00	218,868.00		117,099.00	335,967.00	375,270.00			375,270.00
CAM	1,301,530.00	71,005.00	\$15,857.00	\$37,697.00	124,559.00	\$17,936.00		86,276.00	104,212.00
CAPU	993,999.93	76,523.44	7,414.73	53,161.39	137,099.56	72,395.22	10,700.76	164,520.16	247,616.14
CNC	752,001.00	69,175.00		67,139.00	136,314.00			32,102.00	32,102.00
COTR	387,727.00	10,527	8920.89	7832.56	27,280.84	1,234.25		32,046.51	33,280.76
DOUG	2,741,388.69	116,903.17	51,836.36	37,545.60	206,285.13	55,754.74	4,288.14	173,121.22	233,164.10
ECUAD	764,732.00	53,765.00		25,361.00	79,126.00	8,525.00		66,721.00	75,246.00
JI	538,462.00	36,750.00	23,297.00	38,852.00	98,899.00	4,917.00		61,666.00	66,583.00
KPU	\$3,696,233	\$419,634	\$35,199	\$91,022	545,855.00	38,592.00	1,692.00	409,053.00	449,337.00
LC	2,007,083.45	51,474.61	31,133.77	32,989.35	115,597.73	41,270.15	2,943.70	125,458.99	169,672.84
NI	469,798.00	33,180.00		17,056.00	50,236.00	12,214.00	5,077.00	35,867.00	53,158.00
NL	417,899.00	14,049.00	11,379.00	8,054.00	33,482.00	7,342.00	5,361.00	24,980.00	37,683.00
NW	570,130.69	36,743.00	23,629.04	17,647.67	78,019.71	2,414.06	408.48	25,081.52	27,904.06
OC	1,721,633.00	162,774.27	30,234.30	76,360.13	269,368.70	76,967.79		268,992.93	345,960.72
QUC	261,260.00	50,000.00	4,000.00	10,000.00	64,000.00	10,000.00		65,000.00	75,000.00

7. LIBRARY EXPENSES (CAPITAL AND OPERATING)

	a	b	c	d	b + c + d = e	f	g	h	f + g + h = i
	Collections - Physical					Collections - Electronic			
	Personnel (Salaries and benefits)	Monographs	Audio-Visual	Current Print Periodicals	Subtotal Physical Collections (system will total automatically)	Electronic Monographs	Streaming Media	Electronic Serial Titles	Subtotal Electronic Collections (system will total automatically)
RR	940,748.00	41,542.21	1996.33	9226.02	52,764.56	81,737.97	1,894.78	390,675.7	474,308.42
SEL	564,221.00	30,000.00	3,000.00	42,000.00	75,000.00	3,000.00	7,000.00	43,000.00	53,000.00
SFU	9,735,953.98	1,210,018.72	105,927.00	631,741.00	1,947,686.72	784,403.10	43,494.50	5,720,104.50	6,548,002.10
TRU	1,724,397.00	168,333.00		146,758.00	315,091.00				722,511.00
TWU					-				-
UBC	21,637,538.00	5,400,778.00	1,451,850.00	1,949,615.00	8,802,243.00	222,995.00		11,301,049.00	11,524,044.00
UFV	1,672,084.42	308,173.08	13,536.24	107,662.65	429,371.97	51,082.69	3,977.00	624,343.55	679,403.24
UNBC	1,571,893.00	354,401.76	16,607.39	(137,769.89)	233,239.26	33,949.25	7,796.41	1,379,638.19	1,421,383.85
UVIC	7,986,650.00	2,017,223		836,557	2,853,780.00	832,137.00		4,177,516.00	5,009,653.00
VCC	2,430,230.00	115,512	42,785	30,718.00	189,015.00			99,069.00	99,069.00
VIU	1,714,638.10	117,988.32		28,195.00	146,183.32	265,944.00	3,126.00	640,900.00	909,970.00

					8. INSTITUTIONAL BUDGET		
	j	e + i + j = k	l	a + k + l = m	a	b	a + b = c
	Special Funding Envelopes for Collections	Total Collection Expenditures (system will total automatically)	Other	Total Library Expenditures (system will total automatically)	Base Grant from Ministry	Other operating revenues as reported from Audited Financial Statement for institution	Total Institutional Budget
BCIT	11,700.20	722,937.20		3,130,573.20	135,825,720.00	149,137,475.00	284,963,195.00
CAM		228,771.00	18,321.00	1,548,622.00	60,993,397.00	44,833,812.00	105,827,209.00
CAPU		384,715.70	115,294.09	1,494,009.72	38,263,620.00	44,175,094.00	82,438,714.00
CNC	26,450.00	194,866.00	50,200.00	997,067.00	28,840,950.00	4,424,466.00	33,265,416.00
COTR		60,561.60		448,288.60	16,608,428.00	8,362,329.00	24,970,757.00
DOUG		439,449.23		3,180,837.92	56,628,000.00	41,332,000.00	97,960,000.00
ECUAD		154,372.00	20,306.00	939,410.00	13,345,464.00	11,192,069.00	24,537,533.00
JI		165,482.00	48,773.00	752,717.00	10,615,673.00	33,385,103.00	44,000,776.00
KPU	27,637.00	1,022,829.00	219,605.00	4,938,667.00	67,236,310.00	68,171,335.00	135,407,645.00
LC	17,106.17	302,376.74		2,309,460.19	44,343,115.00	42,042,661.00	86,385,776.00
NI		103,394.00	29,260.00	602,452.00	24,757,137.00	11,873,461.00	36,630,598.00
NL		71,165.00	9,726.00	498,790.00	20,034,575.00	10,137,815.00	30,172,390.00
NW		105,923.77	18,144.08	694,198.54	17,573,867.00	11,920,358.00	29,494,225.00
OC		615,329.42	102,121.00	2,439,083.42	53,021,237.00	41,751,920.00	94,773,157.00
QUC		139,000.00		400,260.00			

					8. INSTITUTIONAL BUDGET		
	j	e + i + j = k	l	a + k + l = m	a	b	a + b = c
	Special Funding Envelopes for Collections	Total Collection Expenditures (system will total automatically)	Other	Total Library Expenditures (system will total automatically)	Base Grant from Ministry	Other operating revenues as reported from Audited Financial Statement for institution	Total Institutional Budget
RR		527,072.98		1,467,820.98	17,188,093	40,185,167	57,373,260.00
SEL		128,000.00	47,195.00	739,416.00	29,327,708.00	13,405,667.00	42,733,375.00
SFU	178,120.00	8,673,808.82	1,017,808.05	19,427,570.85	229,319,000.00	408,874,000.00	638,193,000.00
TRU		1,037,602.00	198,478.00	2,960,477.00	74,169,000.00	91,964,000.00	166,133,000.00
TWU		-		-			
UBC		20,326,287.00	4,715,671.00	46,679,496.00	575,189,000.00	\$332,936,000	908,125,000.00
UFV		1,108,775.21	115,403.99	2,896,263.62	55,580,405.00	57,099,471.00	112,679,876.00
UNBC		1,654,623.11	141,076.89	3,367,593.00	47,390,011.00	27,028,275.00	74,418,286.00
UVIC		7,863,433.00	371,651	16,221,734.00	188,564,000.00	114,360,000	302,924,000.00
VCC	103,355.00	391,439.00	120,979.00	2,942,648.00	54,490,000.00	31,206,000.00	85,696,000.00
VIU		1,056,153.32		2,770,791.42	61,300,922.00	67,093,600.00	128,394,522.00

		a	b	c	d		a	b	c	d
	Campus Name	Total area in square meters	Total number of seats	Total hours open per week (Sept. - April)	Total reference hours per week (Sept. - April)	Campus Name	Total area in square meters	Total number of seats	Total hours open per week (Sept. - April)	Total reference hours per week (Sept. - April)
BCIT	Burnaby	1,722.00	838.00	168.00	61.50	ATC	257.90	86.00	57.50	7.00
CAM	Lansdowne	2,250.00	398.00	73.00	60.00	Interurban	1,139.00	191.00	54.00	25.00
CAPU	North Vancouver	2,604.60	396.00	70.50	70.50					
CNC	Prince George	2,300.00	257.00	72.00	35.00					
COTR	Cranbrook Campus	1,016.00	146.00	67.00	40.00					
DOUG	New Westminster	6,164.50	418.00	69.00	69.00	David Lam	1,916.00	356.00	69.00	69.00
ECUAD	Emily Carr University	992.00	101.00	70.00	60.00					
JI	New Westminster	654.00	79.00	64.00	64.00					
KPU	Surrey	5,547.00	798.00	85.50	66.00	Langley	1,190.00	198.00	69.50	62.00
LC	Langara College	4,743.00	690.00	76.00	67.00					
NI	Comox Valley	495.00	95.00	60.00	60.00	Campbell Rive	305.00	78.00	46.00	46.00
NL	Dawson Creek	420.00	46.00	60.50	35.00	Fort St. John	350.00	54.00	59.50	35.00
NW	Terrace	903.00	80.00	69.00	42.00	Prince Rupert	389.00	59.00	56.00	56.00
OC	Kelowna	2,686.00	342.00	82.00	58.00	Penticton	416.00	68.00	74.25	20.00
QUC	Quest University Canada	855.00	136.00	85.00	65.00					

		a	b	c	d		a	b	c	d
	Campus Name	Total area in square meters	Total number of seats	Total hours open per week (Sept. - April)	Total reference hours per week (Sept. - April)	Campus Name	Total area in square meters	Total number of seats	Total hours open per week (Sept. - April)	Total reference hours per week (Sept. - April)
RR	Royal Roads University	1,900.00	160.00	81.50	62.00					
SEL	Castlegar	1,250.00	124.00	59.50	49.00	Silver King	155.00	15.00	20.00	
SFU	Bennett	16,503.00	1,280.00	99.00	86.00	Belzberg	782.00	151.00	76.00	66.00
TRU	Kamloops	4,569.00	332.00	154.00	135.00	Wms Lake	172.00	70.00	58.00	30.00
TWU	Norma Marion Alloway Library	3,344.50	398.00	83.00	76.00					
UBC	Vancouver	36,092.00	4,948.00	1,014.00	821.50	Okanagan	2,756.00	450.00	100.50	74.50
UFV	Abbotsford	3,149.00	209.00	80.00	67.00	Chilliwack	315.00	47.00	64.50	58.50
UNBC	Geoffrey R. Weller Library	4,248.70	565.00	92.00	36.00					
UVIC	Main	30,687.18	2,098.00	99.5	137					
VCC	Broadway	1,659.77	217.00	56.00	56.00	Downtown	910.19	163.00	59.00	59.00
VIU	Nanaimo	6,812.00	731.00	119.00	77.00	Cowichan	378.30	84.00	60.00	60.00

9. FACILITIES & HOURS

		a	b	c	d		a	b	c	d
	Campus Name	Total area in square meters	Total number of seats	Total hours open per week (Sept. - April)	Total reference hours per week (Sept. - April)	Campus Name	Total area in square meters	Total number of seats	Total hours open per week (Sept. - April)	Total reference hours per week (Sept. - April)
BCIT	BMC	232.00	53.00	40.00	7.00					
CAM										
CAPU										
CNC										
COTR										
DOUG										
ECUAD										
JI										
KPU	Cloverdale	546.00	84.00	60.00	16.00	Richmond	1,718.00	245.00	85.50	66.00
LC										
NI	Port Alberni	198.00	56.00	46.00	46.00	Port Hardy	308.00	19.00	17.50	2.50
NL	Fort Nelson	103.00	12.00	42.50	-					
NW	Smithers	133.40	20.00	28.00	21.00					
OC	Salmon Arm	383.00	75.00	72.00	20.00	Vernon	648.00	95.00	74.50	23.00
QUC										

9. FACILITIES & HOURS

		a	b	c	d		a	b	c	d
	Campus Name	Total area in square meters	Total number of seats	Total hours open per week (Sept. - April)	Total reference hours per week (Sept. - April)	Campus Name	Total area in square meters	Total number of seats	Total hours open per week (Sept. - April)	Total reference hours per week (Sept. - April)
RR										
SEL	Tenth St	40.00	4.00	20.00						
SFU	Fraser Valley (Surrey)	2,137.00	362.00	69.00	46.00					
TRU										
TWU										
UBC										
UFV	Mission	71.00	14.00	23.50	23.50					
UNBC										
UVIC										
VCC										
VIU	Powell River	161.00	20.00	27.00	27.00					

					10. COMPUTING INFRASTRUCTURE
	e	f	g	h	a
	System will total automatically				
	Total square meters all campuses	Total seats all campuses	Total open hours per week all campuses (Sept.-April)	Total reference hours per week all campuses (Sept.-April)	Number of public workstations
BCIT	2,211.90	977.00	265.50	75.50	116
CAM	3,389.00	589.00	127.00	85.00	138
CAPU	2,604.60	396.00	70.50	70.50	462
CNC	2,300.00	257.00	72.00	35.00	43
COTR	1,016.00	146.00	67.00	40.00	12
DOUG	8,080.50	774.00	138.00	138.00	149
ECUAD	992.00	101.00	70.00	60.00	17
JI	654.00	79.00	64.00	64.00	23
KPU	9,001.00	1,325.00	300.50	210.00	338
LC	4,743.00	690.00	76.00	67.00	110
NI	1,306.00	248.00	169.50	154.50	56
NL	873.00	112.00	162.50	70.00	36
NW	1,425.40	159.00	153.00	119.00	30
OC	4,133.00	580.00	302.75	121.00	145
QUC	855.00	136.00	85.00	65.00	9

					10. COMPUTING INFRASTRUCTURE
	e	f	g	h	a
System will total automatically					
	Total square meters all campuses	Total seats all campuses	Total open hours per week all campuses (Sept.-April)	Total reference hours per week all campuses (Sept.- April)	Number of public workstations
RR	1,900.00	160.00	81.50	62.00	46
SEL	1,445.00	143.00	99.50	49.00	26
SFU	19,422.00	1,793.00	244.00	198.00	364
TRU	4,741.00	402.00	212.00	165.00	82
TWU	3,344.50	398.00	83.00	76.00	40
UBC	38,848.00	5,398.00	1,114.50	896.00	631
UFV	3,535.00	270.00	168.00	149.00	44
UNBC	4,248.70	565.00	92.00	36.00	103
UVIC	30,687.18	2,098.00	99.50	137.00	176
VCC	2,569.96	380.00	115.00	115.00	59
VIU	7,351.30	835.00	206.00	164.00	143

11. LIBRARY AUTOMATED SYSTEMS

	Cataloguing	Primary source of bibliographic records	Secondary source of bibliographic records	OPAC	Periodicals Check In	Acquisitions
BCIT	Interfaces - Millennium	OCLC	Amicus	Innovative Interfaces - WePac	Innovative Interfaces Millennium	Innovative Interfaces - Millennium
CAM	Symphony	Amicus	Coutts	Symphony	Symphony	Symphony
CAPU	Innovative's Innopac	LC, NLC	Amicus	Innovative's Millennium	Innovative's Millennium	Innovative's Millennium
CNC	Sirsi	LC	Amicus	Sirsi eLibrary		
COTR	Evergreen	LC/Amicus/Outlook/OCLC	Original cataloguing	Evergreen	MS Excel	Evergreen
DOUG	Innovative	OCLC, AG Canada, Amicus, LC	other Z39.50 sites	Innovative	Innovative	Innovative
ECUAD	Evergreen	BookWhere	Book Venders	Evergreen	Manual	Evergreen
JI	SirsiDynix	OCLC	Amicus	SirsiDynix	SirsiDynix	SirsiDynix
KPU	SirsiDynix Symphony	LC, LAC, 239, 50	OCLC	SirsiDynix Symphony	SirsiDynix Symphony	SirsiDynix Symphony
LC	III-Millennium	Bookwhere	Z39.50	III-Millennium	III-Millennium	III-Millennium
NI	Sirsi	Lib Congress/UBC	Amicus	Sirsi		Sirsi
NL	SirsiDynix Symphony	Outlook	Vendors	SirsiDynix Symphony	SirsiDynix Symphony	
NW	SirsiDynix	Outlook	Amicus	Sirsi eLibrary	Sirsi	Sirsi
OC	Voyager (Ex Libris)	YBP; Coutts	OCLC	Voyager (Ex Libris)	Voyager (Ex Libris)	Voyager (Ex Libris)
QUC	Voyager (Endeavor)	Library of Congress	Library & Archives Canada	Voyager (Endeavor)	Voyager (Endeavor)	Voyager (Endeavor)

11. LIBRARY AUTOMATED SYSTEMS

	Cataloguing	Primary source of bibliographic records	Secondary source of bibliographic records	OPAC	Periodicals Check In	Acquisitions
RR	Voyager (Endeavor)	BNA	Library of Congress	Voyager (Endeavor)	Voyager (Endeavor)	Voyager (Endeavor)
SEL	Sirsi	LC, Outlook, NLC	other Z39.50	Sirsi	Sirsi	Sirsi
SFU	III Millennium	OCLC	Z39.50	III Millenium	III Millenium	III Millenium
TRU	Sirsi/Unicorn	Yankee Book Peddler	Amicus	Sirsi/Unicorn	Sirsi/Unicorn	Sirsi/Unicorn
TWU	SirsiDynix Symphony	OCLC	Amicus	Symphony		Symphony
UBC	Voyager/ExLibris	LC	OCLC	Voyager	Voyager	Voyager
UFV	SirsiDynix Symphony	OCLC, LC, Amicus		SirsiDynix Symphony	SirsiDynix Symphony	SirsiDynix Symphony
UNBC	Millennium	OCLC	NLC	Millennium	Millennium	Millennium
UVIC	Voyager/ExLibris	OCLC; Vendor records; Z39.50 databases		Voyager/ExLibris	Voyager/ExLibris	Voyager/ExLibris
VCC	VTLS Virtua	BookWhere	Coutts	VTLS	VTLS	VTLS
VIU	Sirsi	BiblioFile/Amicus	Bookwhere	Sirsi	Sirsi	Sirsi

	Interlibrary Loans	Discovery Service	ERM	Link Resolver
BCIT	Innovative Interfaces – Millennium (Borrowing module)	Innovative Interfaces - Encore	N/A	Innovative Interfaces - WebBridge
CAM	Outlook/Ariel	Ebsco EDS	Cufts	Cufts
CAPU	Ariel/Outlook	Innovative's Encore / Synergy	CRDB	Cufts
CNC	Agent, Email		Cufts	Cufts/Godot
COTR	Outlook, Email			EBSCO Linksource
DOUG	Ariel, Outlook Online	Encore	n/a	Serials Solutions
ECUAD	Manual		Cufts	Cufts/Godot
JI	Outlook, Amicus, DocLine		Serials Solutions	Cufts/Godot
KPU	Relais	Summon	Researcher (Cufts Tool)	Godot
LC	Ariel, Outlook	III-Encore Synergy	III-Millennium/Case	Cufts/Godot
NI	Outlook			Cufts
NL	Outlook		Cufts	Cufts/Godot
NW	Manual/Outlook		Cufts	Godot
OC	Locally developed, Godot, Outlook, Ariel	Ebsco Discovery Service	Cufts	Godot
QUC	manual			

	Interlibrary Loans	Discovery Service	ERM	Link Resolver
RR	VDX			
SEL	Outlook, Godot, Ariel		Cufts	Cufts / Godot
SFU	Relais	Summon	Cufts	Cufts/Godot
TRU	Relais	Summon	CUFTS	Cufts/Godot
TWU	Relais			Godot
UBC	Relais	Summon (SerialsSolutions)	SerialsSolutions	360 Link (SerialsSolutions)
UFV	Ariel/ Outlook/ Amicus	Ebsco Discovery Service	Cufts	Godot/Cufts
UNBC	Relais	Encore	Millennium	Serials Solution
UVIC	OCLC; Relais	Summon	Serials Solutions, 360 Resource Manager	Serials Solutions, 360 Link
VCC	Ariel/Outlook			Godot/Cufts
VIU	Sirsi	Summon	Serials Solutions (360 Core & 360 RM)	Serials Solutions 360 Link

	a) Volumes/FTE Student: 5.1(f)/3(f)	b) Physical Subscriptions/FTE Student: 5.1(g)/3(f)	c) Collection Expenditures/FTE Student: 7(k)/3(f)	d) Library Expenditures/FTE Student: 7(m)/3(f)	e) Collection Expenditures as % of Library Expenditures: 7(k)/7(m)	f) Physical Periodicals as % of Library Expenditures: 7(d)/7(m)	g) Electronic Services as % of Library Expenditures: 7(i)/7(m)	h) Library Expenditures as % of Institutional Budget: 7(m)/8(c)	i) FTE Students/FTE Library Personnel: 3(f)/4(f)	j) Direct Circulation/FTE Student: 6(d)/3(f)	k) Direct Circulation/Total Volumes: 6(d)/5.1(f)	l) Total Library Expenditure/Circulation: 7(m)/6(d)	m) Reference Transactions/FTE Student: 6a(iii)/3(f)	n) Number of Students Instructed/FTE Students: 6(b)/3(f)	o) Total Library Area/FTE Student: 9(e)/3(f)	p) Number of Seats/FTE Student: 9(f)/3(f)	q) Hours Open/FTE Personnel: 9(g)/4(f)	r) Reference Hours/Total Open Hours: 9(h)/9(g)	s) Electronic Titles per FTE Student 5.2(d)/3(f)	t) Electronic Expenditures/per FTE Student 7(i)/3(f)
Library	Ratios																			
BCIT	9.84	0.02	38.25	165.64	23.09%	3.74%	11.99%	1.10%	588.60	3.07	0.31	53.95	0.63	0.24	0.12	0.05	8.27	0.28	3.08	19.86
CAM	10.89	0.03	24.96	168.93	14.77%	2.43%	6.73%	1.46%	505.63	4.03	0.37	41.93	1.86	0.62	0.37	0.06	7.00	0.67	3.62	11.37
CAPU	24.60	0.06	69.70	270.69	25.75%	3.56%	16.57%	1.81%	278.19	6.89	0.28	39.29	1.21	0.66	0.47	0.07	3.55	1.00	28.97	44.86
CNC	52.64	0.11	55.85	285.74	19.54%	6.73%	3.22%	3.00%	286.02	5.61	0.11	50.91	3.96	0.51	0.66	0.07	5.90	0.49	13.02	9.20
COTR	24.28	0.03	26.54	196.45	13.51%	1.75%	7.42%	1.80%	351.08	4.67	0.19	42.06	1.79	0.31	0.45	0.06	10.31	0.60	31.24	14.58
DOUG	22.58	0.10	51.24	370.85	13.82%	1.18%	7.33%	3.25%	233.07	21.76	0.96	17.05	2.66	0.98	0.94	0.09	3.75	1.00	1.44	27.18
ECUAD	136.34	0.15	105.95	644.76	16.43%	2.70%	8.01%	3.83%	131.03	21.23	0.16	30.38	1.05	0.27	0.68	0.07	6.29	0.86	12.92	51.64
JI	10.64	0.05	60.31	274.32	21.98%	5.16%	8.85%	1.71%	334.62	0.87	0.08	314.29	1.22	0.32	0.24	0.03	7.80	1.00	7.82	24.27
KPU	20.70	0.06	97.06	468.64	20.71%	1.84%	9.10%	3.65%	188.05	5.97	0.29	78.45	3.93	0.86	0.85	0.13	5.36	0.70	7.37	42.64
LC	13.00	0.03	39.83	304.20	13.09%	1.43%	7.35%	2.67%	277.69	7.31	0.56	41.59	2.53	1.16	0.62	0.09	2.78	0.88	11.37	22.35
NI	14.67	0.10	42.57	248.07	17.16%	2.83%	8.82%	1.64%	231.30	5.96	0.41	41.61	1.27	0.73	0.54	0.10	16.14	0.91	60.97	21.89
NL	24.58	0.11	50.38	353.08	14.27%	1.61%	7.55%	1.65%	217.34	3.96	0.16	89.12	3.50	0.38	0.62	0.08	25.00	0.43	58.55	26.67
NW	53.22	0.13	65.59	429.84	15.26%	2.54%	4.02%	2.35%	183.73	8.06	0.15	53.36	2.59	0.55	0.88	0.10	17.41	0.78	22.28	17.28
OC	20.45	0.05	83.55	331.17	25.23%	3.13%	14.18%	2.57%	223.18	8.29	0.41	39.96	2.07	0.85	0.56	0.08	9.17	0.40	15.24	46.97
QUC	33.83	0.17	347.50	1000.65	34.73%	2.50%	18.74%	#REF!	66.67	5.95	0.18	168.32	4.25	1.80	2.14	0.34	14.17	0.76	307.50	187.50
RR	27.16	0.04	226.26	630.10	35.91%	0.63%	32.31%	2.56%	152.25	7.84	0.29	80.32	3.61	0.82	0.82	0.07	5.33	0.76	79.73	203.61
SEL	31.50	0.12	55.34	319.66	17.31%	5.68%	7.17%	1.73%	262.85	4.59	0.15	69.68	0.74	0.34	0.62	0.06	11.31	0.49	6.44	22.91
SFU	129.16	0.17	380.50	852.24	44.65%	3.25%	33.70%	3.04%	154.19	25.66	0.20	33.22	5.38	1.54	0.85	0.08	1.65	0.81	147.01	287.25
TRU	28.54	0.03	114.66	327.14	35.05%	4.96%	24.41%	1.78%	375.66	8.09	0.28	40.42	1.82	0.46	0.52	0.04	8.80	0.78	9.28	79.84
TWU	144.93	0.34	0.00	0.00	#DIV/0!	#DIV/0!	#DIV/0!	#DIV/0!	148.69	41.86	0.29	0.00	1.80	1.16	1.55	0.18	5.72	0.92	63.01	0.00
UBC	124.17	0.16	456.00	1047.21	43.54%	4.18%	24.69%	5.14%	137.78	40.70	0.33	25.73	3.19	0.89	0.87	0.12	3.44	0.80	25.78	258.53
UFV	28.27	0.06	147.95	386.47	38.28%	3.72%	23.46%	2.57%	320.26	10.10	0.36	38.25	3.10	0.96	0.47	0.04	7.18	0.89	27.48	90.66
UNBC	139.84	0.15	573.74	1167.72	49.13%	-4.09%	42.21%	4.53%	107.41	15.69	0.11	74.43	0.94	1.07	1.47	0.20	3.43	0.39	53.95	492.87
UVIC	129.23	0.40	468.28	966.04	48.47%	5.16%	30.88%	5.36%	115.36	20.49	0.16	47.14	3.33	0.43	1.83	0.12	0.68	1.38	44.13	298.34
VCC	11.01	0.03	51.89	390.05	13.30%	1.04%	3.37%	3.43%	251.89	10.14	0.92	38.48	3.76	0.64	0.34	0.05	3.84	1.00	5.52	13.13
VIU	40.81	0.02	148.56	389.74	38.12%	1.02%	32.84%	2.16%	270.83	8.95	0.22	43.55	1.65	0.44	1.03	0.12	7.85	0.80	52.54	128.00

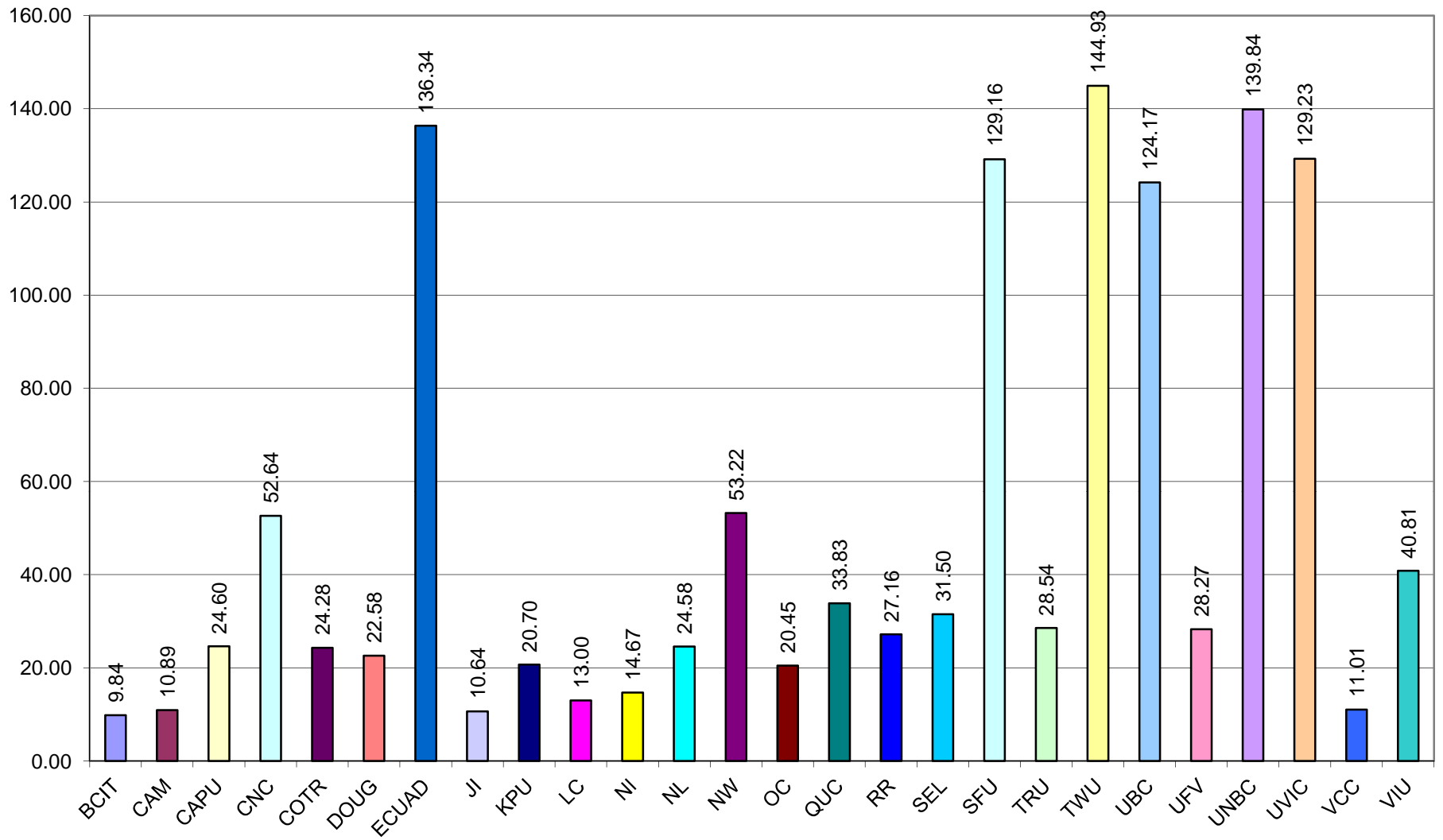
**CPSLD LIBRARY SURVEY 2011-2012
EXPLANATORY NOTES**

Library	Notes
BCIT	5.2 B: Streaming media count not available.
CAPU	Graph Q: We closed the libraries at our two regional campuses in Squamish and Sechelt. 2010-11 : 169.5 open hours / 18.42 FTE = 9.20 (all 3 campuses) 2011-12: 70.5 open hours / 19.84 FTE = 3.55 (NV campus only)
	Graph R: NV campus Library has reference service equal to Library open hours. Prev. years there was no reference service for the libraries at the regional campuses (Squamish & Sechelt) 2010-11: 74.5 Ref hours / 169.5 open hours = .44 (all 3 campuses) 2011-12: 70.5 Ref hours / 70.5 open hours = 1.0 (NV campus only)
COTR	5.2 Includes titles available through multiple databases. Hard to count only once/dedupe.
ECUAD	Other Visual Formats includes 143,529 slides and slide sets. Expenditure on Books and AV materials are combined.(7b&c) Total cost of Electronic Collections is 75,476 (7i)
JIBC	Professional development funds for library staff have been added to the "Other" section of the Budget area.
	This year's gate count differs greatly from the previous year, as the previous year's submission was incorrect. Entry for 2010-2011 gate count (6.f) should have read 33,696.
LC	4.a. Temporary vacancy as at March 31
	5.1.g. Reporting all titles, including back issue titles (not noted in 5.1e)
	7.f-h. Estimated
	Non-grant institutional operating revenue has been under reporting for at least the past 10 years, affecting graph H Library Expenditures as % of Institutional Budget. Correct data available at Ministry of Advanced Education, Innovation and Technology website (http://www.aved.gov.bc.ca/gre/financial.htm).
NW	6f Gate count for Terrace and Prince Rupert Campuses only
SFU	5.1 Prior to 2011/12 counted streaming media in 5D "Other physical visual formats" (in 2010/11 1,347,551 including 1,125,694 digital). In 2011/12 counted in 5.2b "Streaming media" instead.
TRU	6e An error appears in our 2010/2011 survey for this item. This number should have been 12,276
	6 g+h In previous yrs we included NET and MEC figures . This year we have removed these categories of statistics for both ILLs received and ILLs sent.
	7c Audio-visual expenditures are included in the monographs number. In our budget these two items are coded to the same budget line
	7 f, g, h, We do not break down these expenditures as they are all coded to the same budget line.
	6 (a)ii We attribtre this high number to the fact that the Library moved into a new building.
UBC	General: All figures include UBC Vancouver and UBC Okanagan
	5.a. Revised counting method: does not include non-catalogued microforms.
	5.e. Revised counting method: changed from serials title count to number of item records in ILS.
	6.f. Gate count includes estimate for IKBLC-South Wing (1.2 M)
	7.b. Includes 2.85M for collections gifts in kind
	7.c. Includes 1.45M for collections gifts in kind

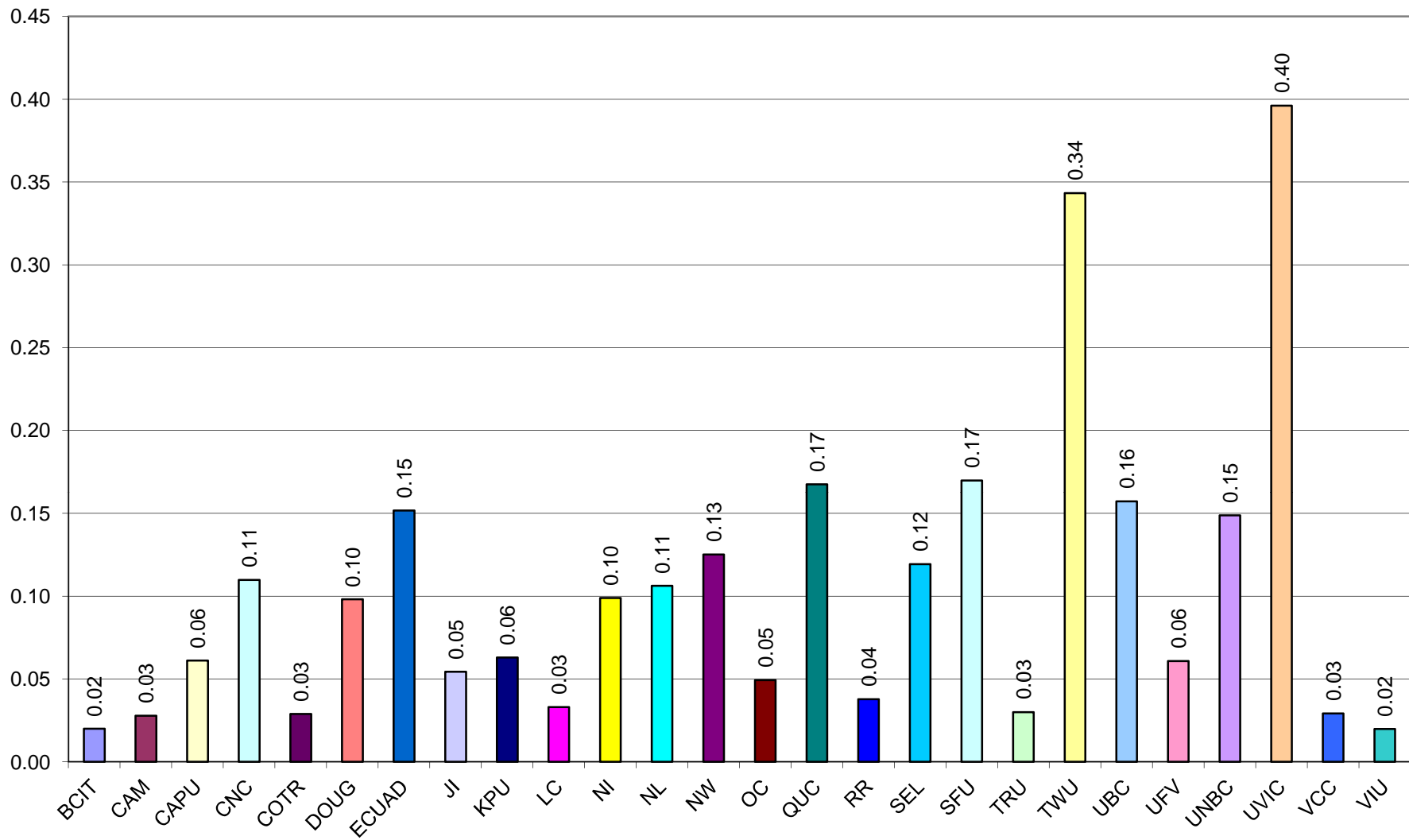
**CPSLD LIBRARY SURVEY 2011-2012
EXPLANATORY NOTES**

Library	Notes
UFV	6.f. Gate Count: gate count not available from one campus so omitted from report this year
UNBC	6.f. representative sample taken on Oct. 19, 2011
	6d. This number includes initial circulations and renewals.
	7d. print periodicals expenditure includes large credit from changing print subscriptions to electronic subscriptions
UVIC	5.a. Includes Law, Special Collections and Archives. Also includes maps and scores. Note that the only very slight increase is due to a miscalculation the previous year.
	6.ai,ii Numbers from last year were incorrect; reference questions should have been 39,091 and directional questions 20,981
	6.f. Decrease is due to classrooms in library no longer being used for classes as they were the previous year during construction elsewhere on campus.
	7.c,h,j Numbers are unavailable.
	7.g. Number is included in 7h
	7.i. Also includes contract binding, institutional funding from external sources
	7.m. Note that we calculate our total library expenditures to be 16,479,931
	9.d. Note that last year's number was incorrect, should have been 137
	Graph B: The number of print subscriptions (5g) was incorrectly reported in 2010/11 as 3,329 when it should have been reported as 6,697, for a ratio of 0.399.
	Graph M: The number of reference questions (6aiii) was incorrectly reported in 2010-11 as 12,876 when it should have been reported as 39,091, for a ratio of 2.33.
Graph R: The number of reference hours (9h) was incorrectly reported in 2010-11 as 70 when it should have been reported as 137, for a ratio of 1.376.	
VCC	6d Circulation Direct includes both Virtua and WCO
	Budget expenditures are not distinguished by format. Print and electronic expenditures are included under 7b-d. Database expenditures are noted in 7h.
VIU	VIU was closed March 10-April 8, 2011 due to a labour dispute. The jump in salary this year is caused by a return to regular labour relations.
	VIU made significant one-time purchases this year.
	The Nanaimo library is divided into two sections: the Commons and the stacks/services area. Total library hours are based on the Commons, which has longer hours than the stacks/services area. Reference hours are based on the stacks/services area hours. Open and reference hours for Powell River campus have remained the same as the last several years. However, the last three years have been misreported as 25 hrs/week. The correct total is 27 hrs/week.

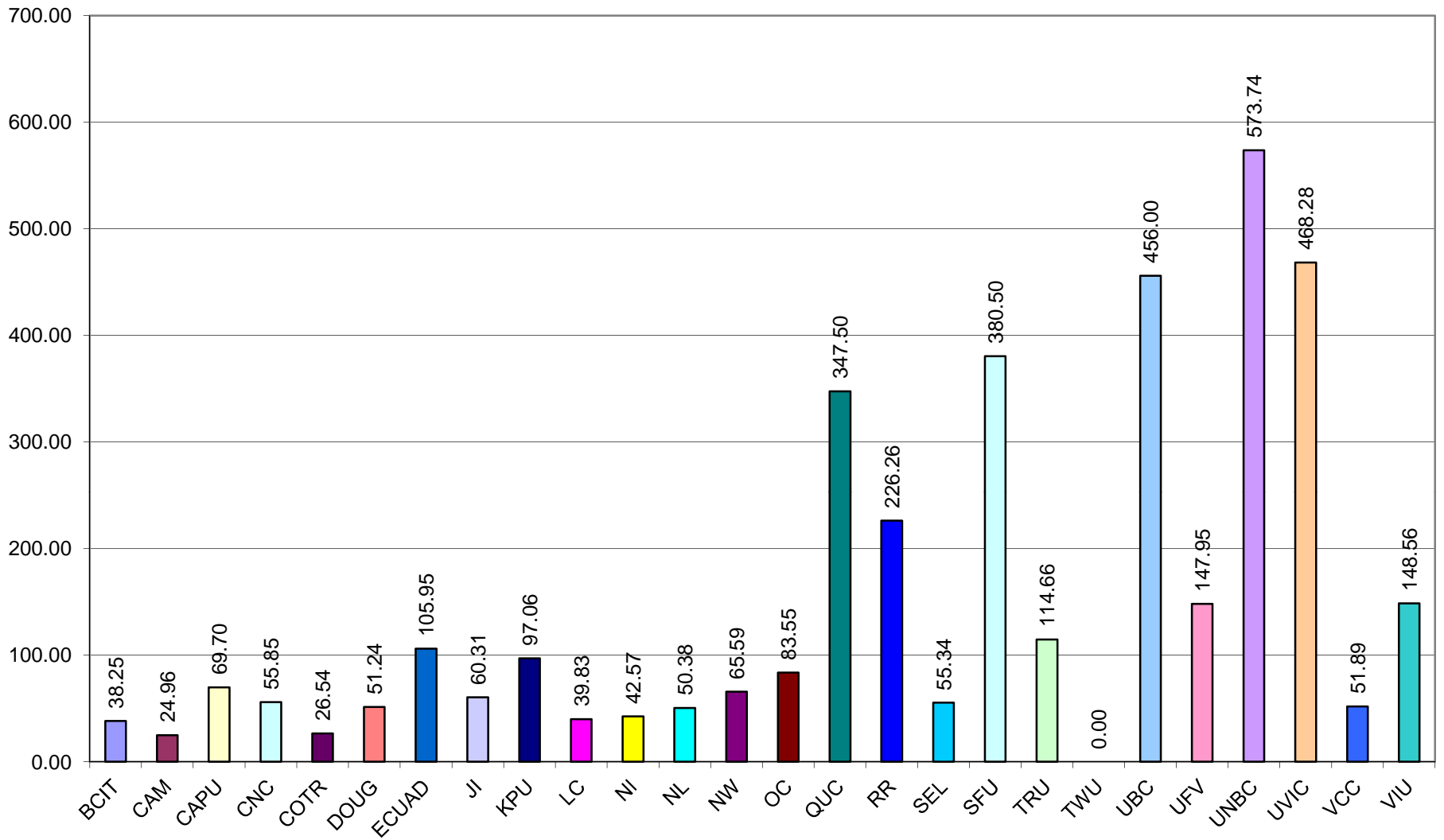
a) Volumes per FTE Student: 5.1(f)/3(f)



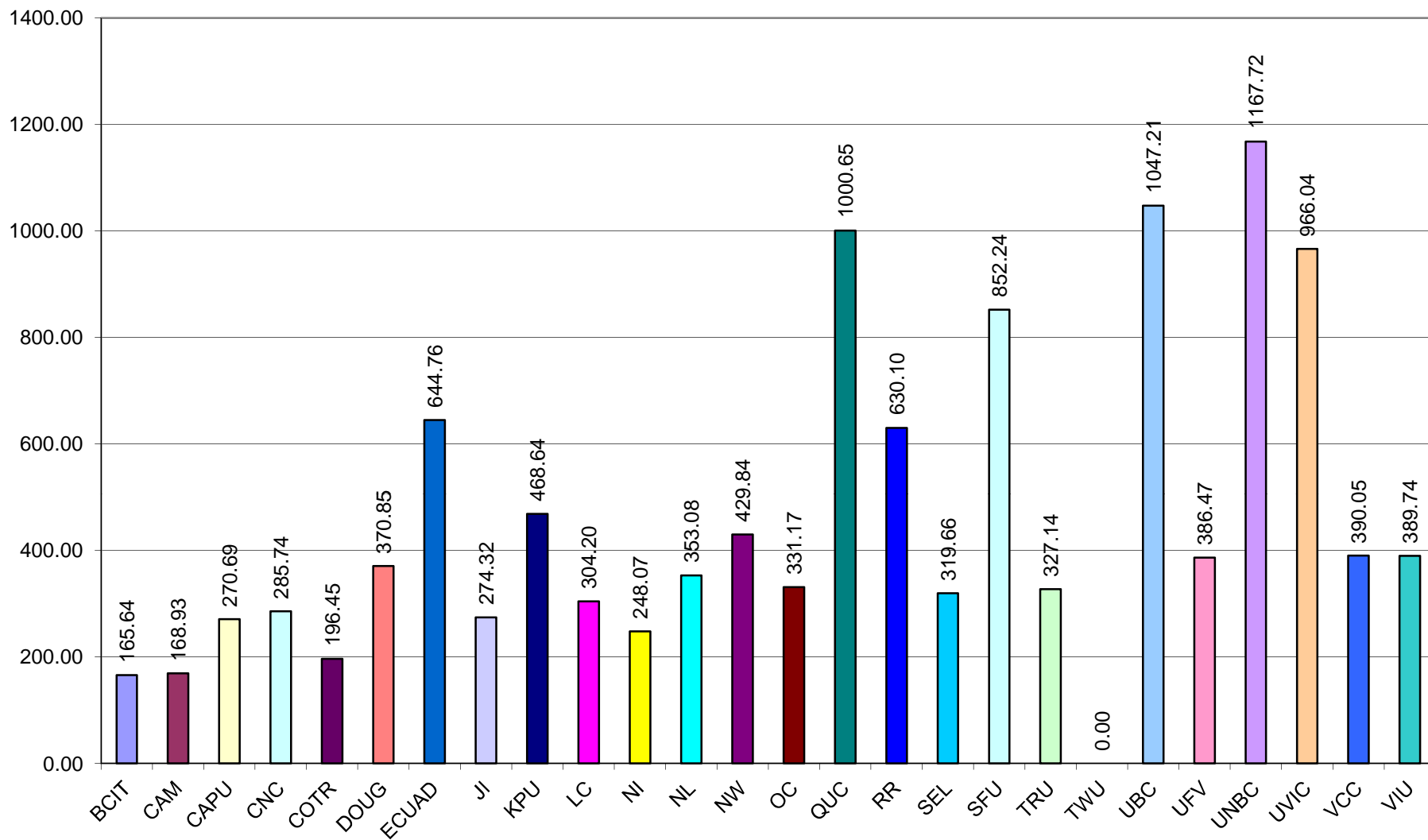
b) Physical Subscriptions per FTE Student: 5.1(g)/3(f)



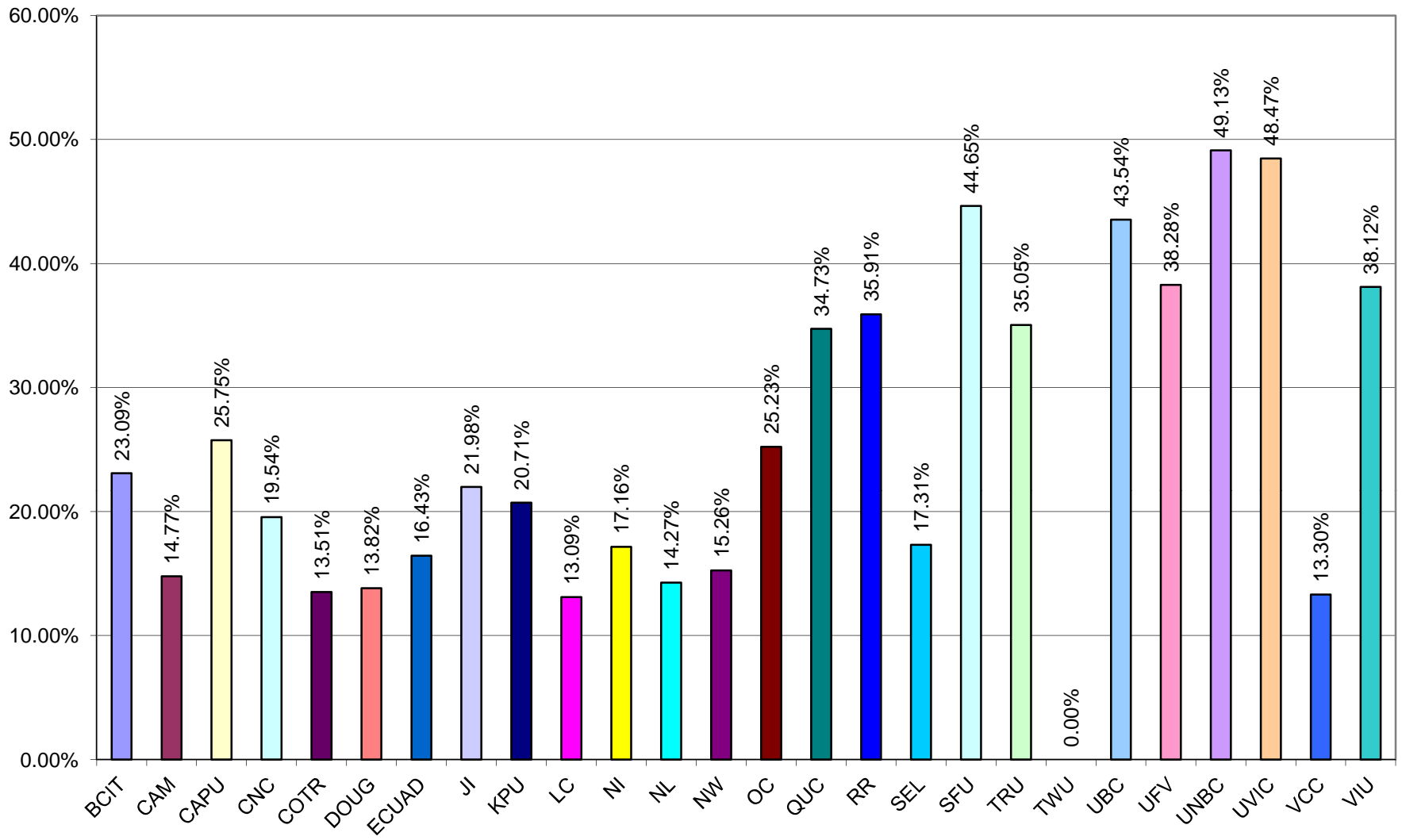
c) Collection Expenditures per FTE Student: 7(k)/3(f)



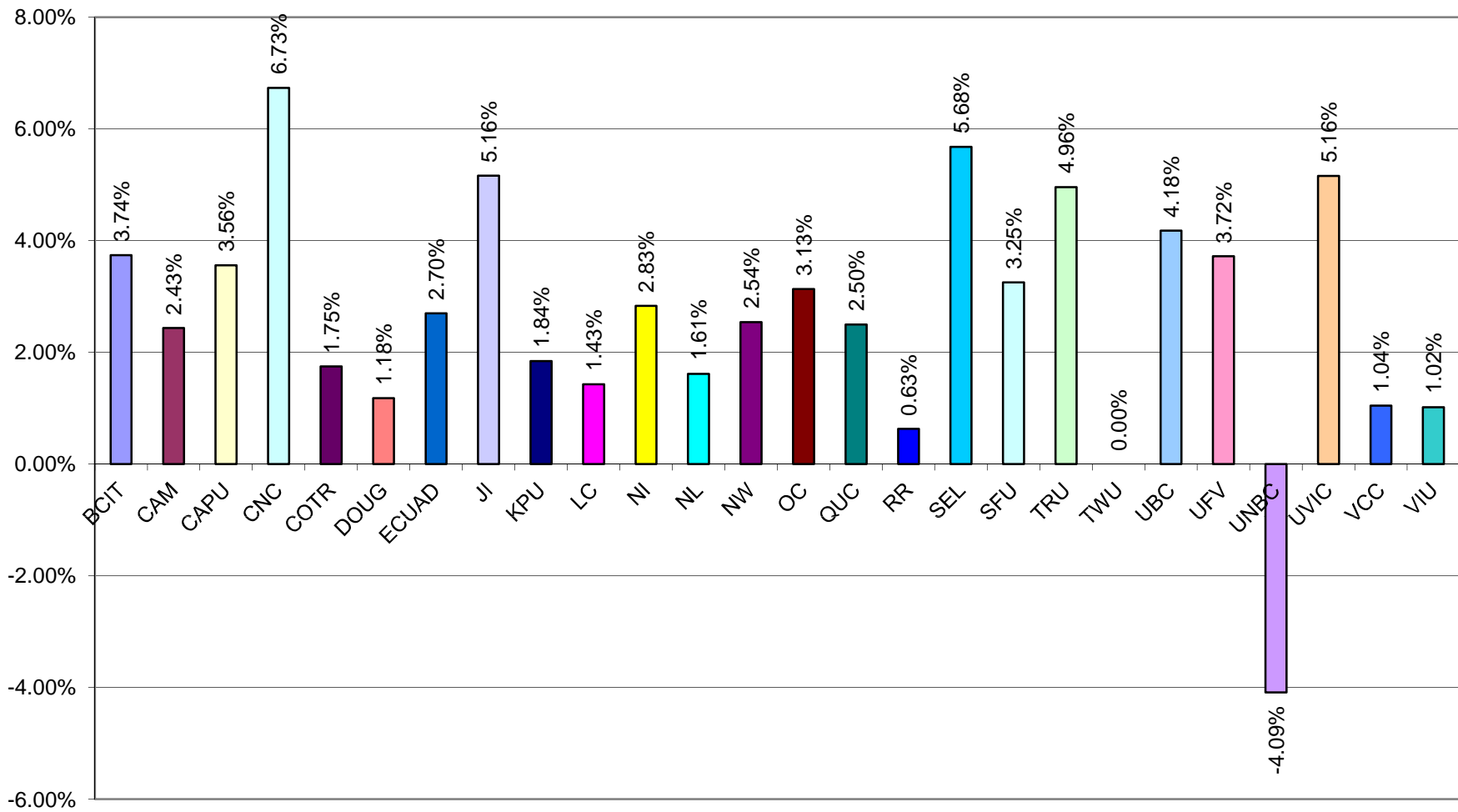
d) Library Expenditures per FTE Student: 7(m)/3(f)



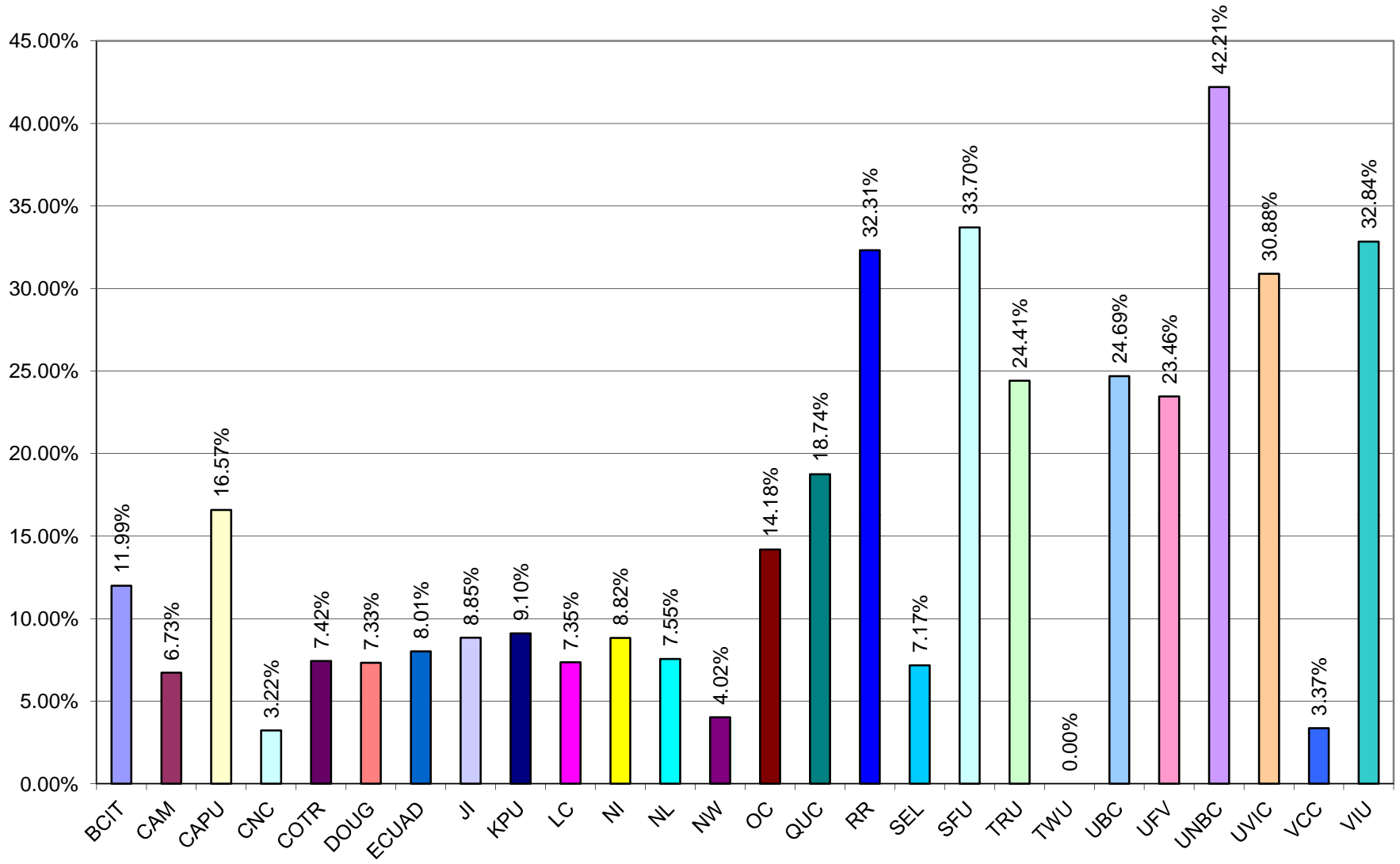
e) Collection Expenditures as % of Library Expenditures: 7(k)/7(m)



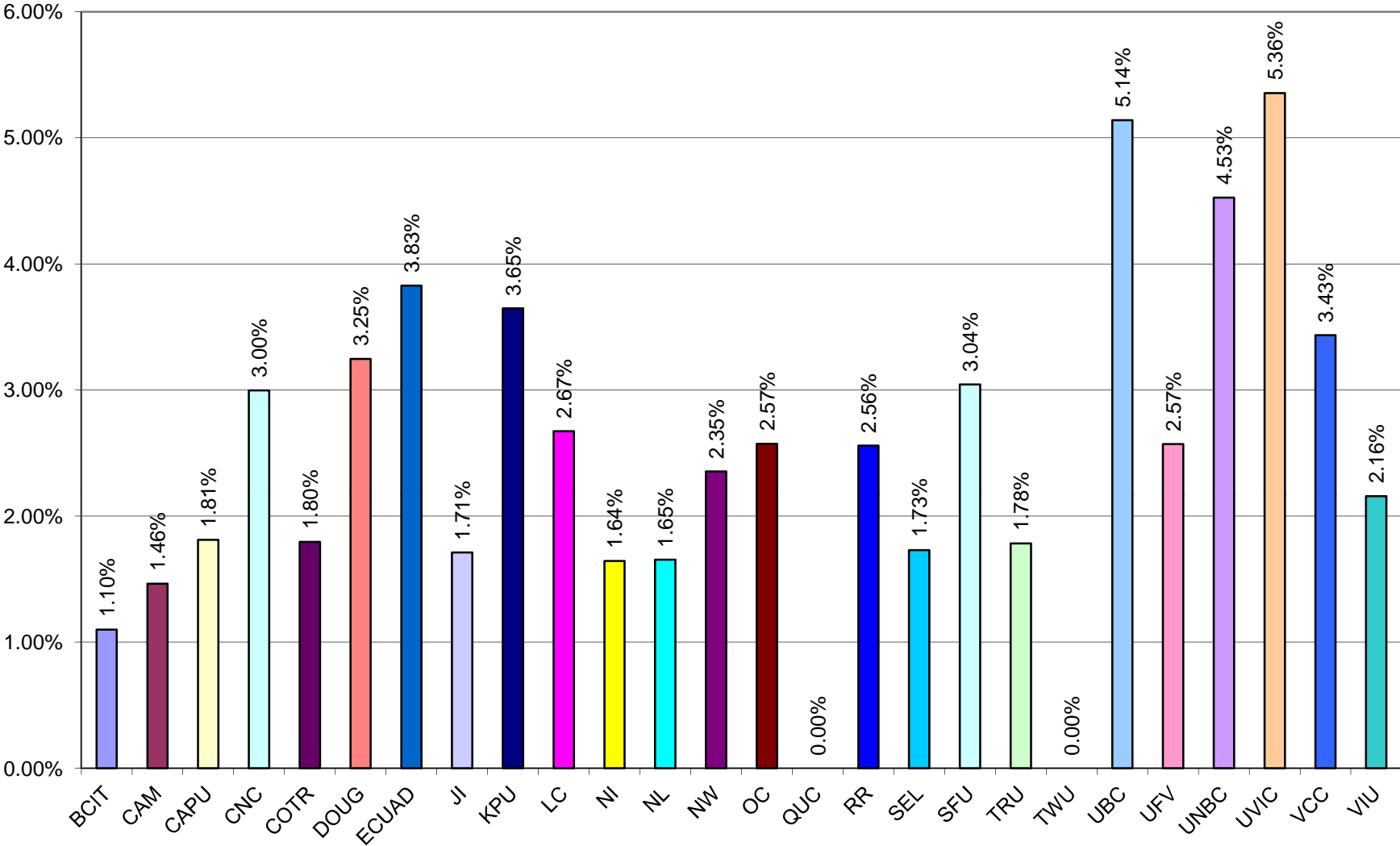
f) Physical Periodicals as % of Library Expenditures: 7(d)/7(m)



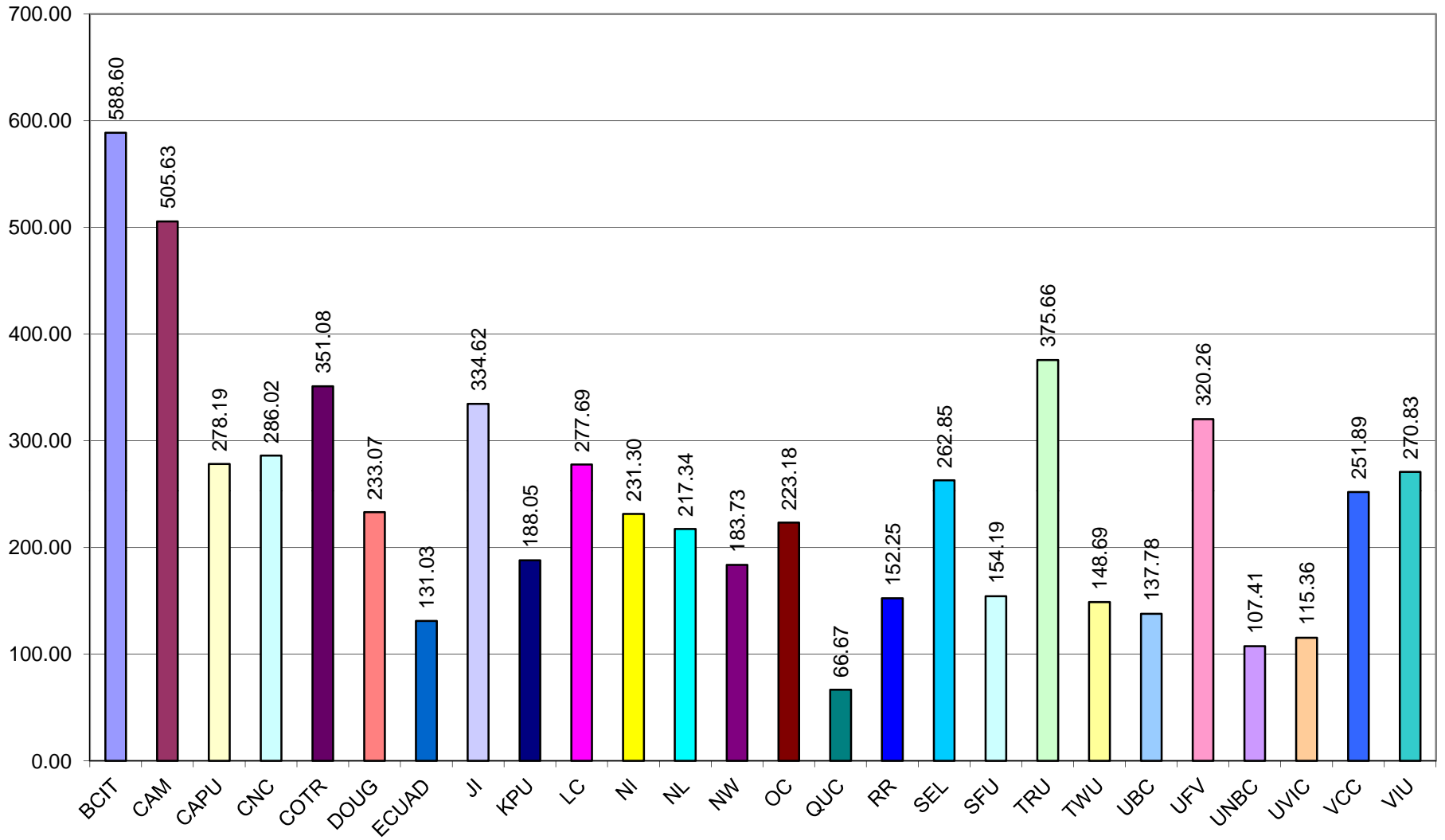
g) Electronic Services as % of Library Expenditures: 7(i)/7(m)



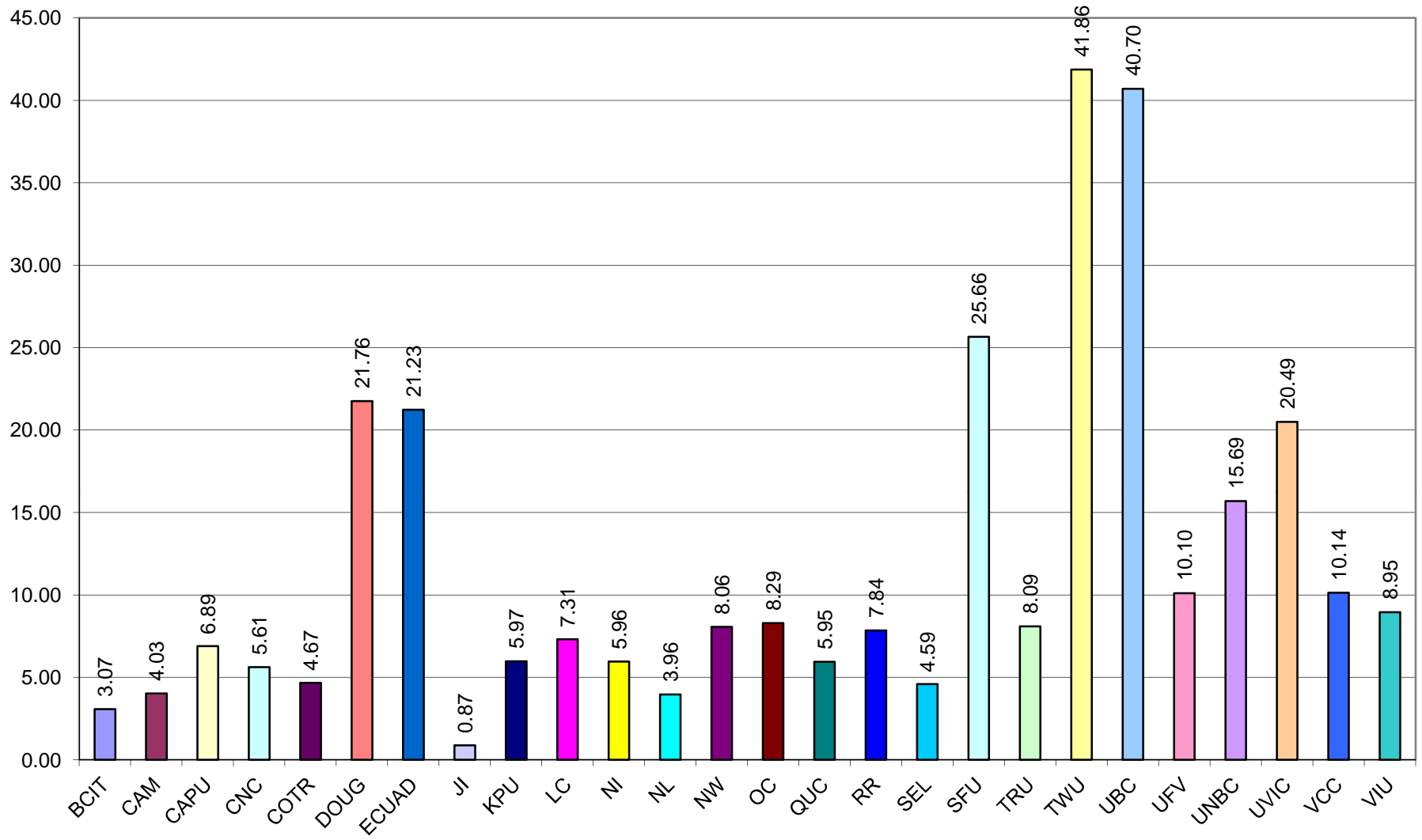
h) Library Expenditures as % of Institutional Budget: 7(m)/8(c)



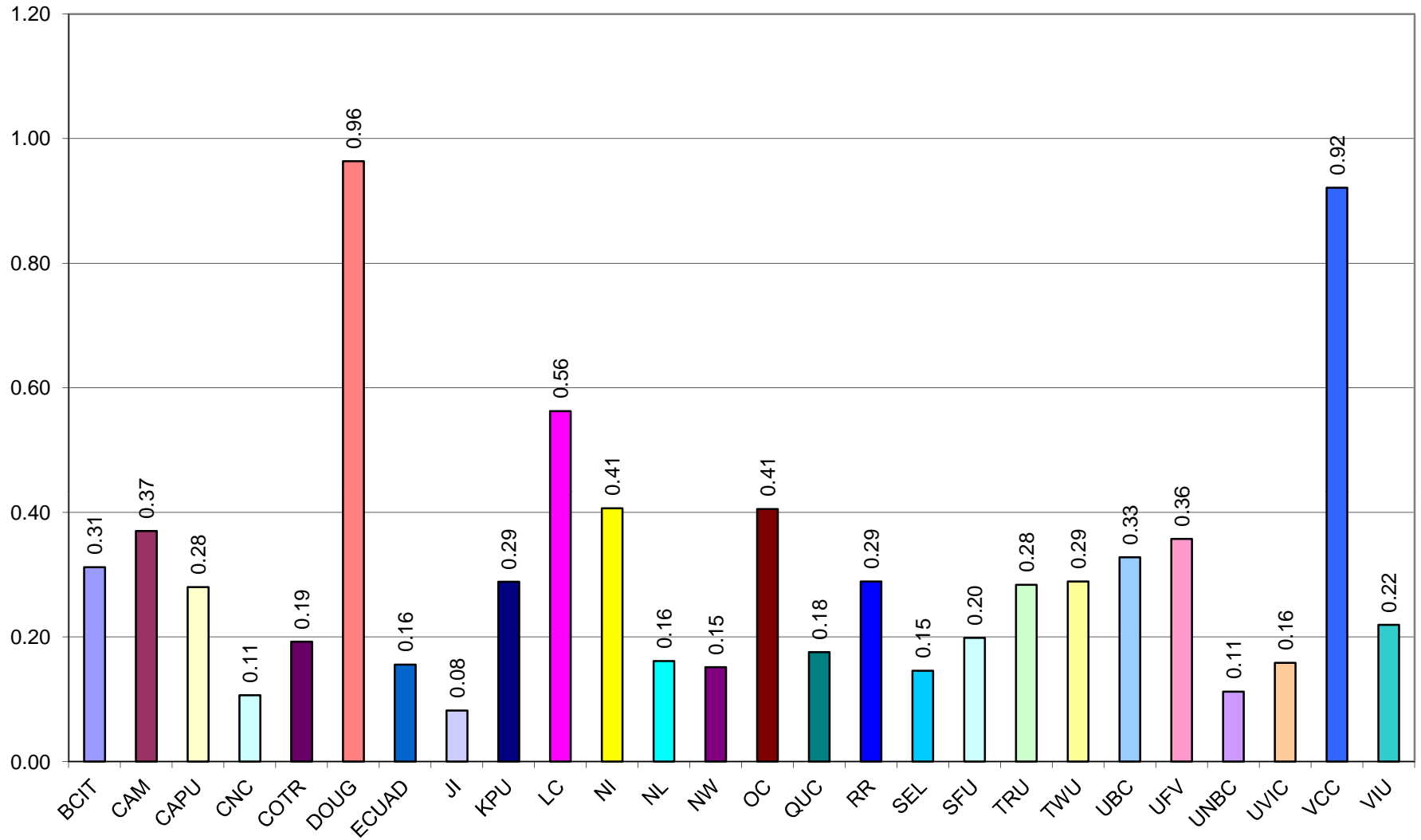
i) FTE Students per FTE Library Personnel: 3(f)/4(f)



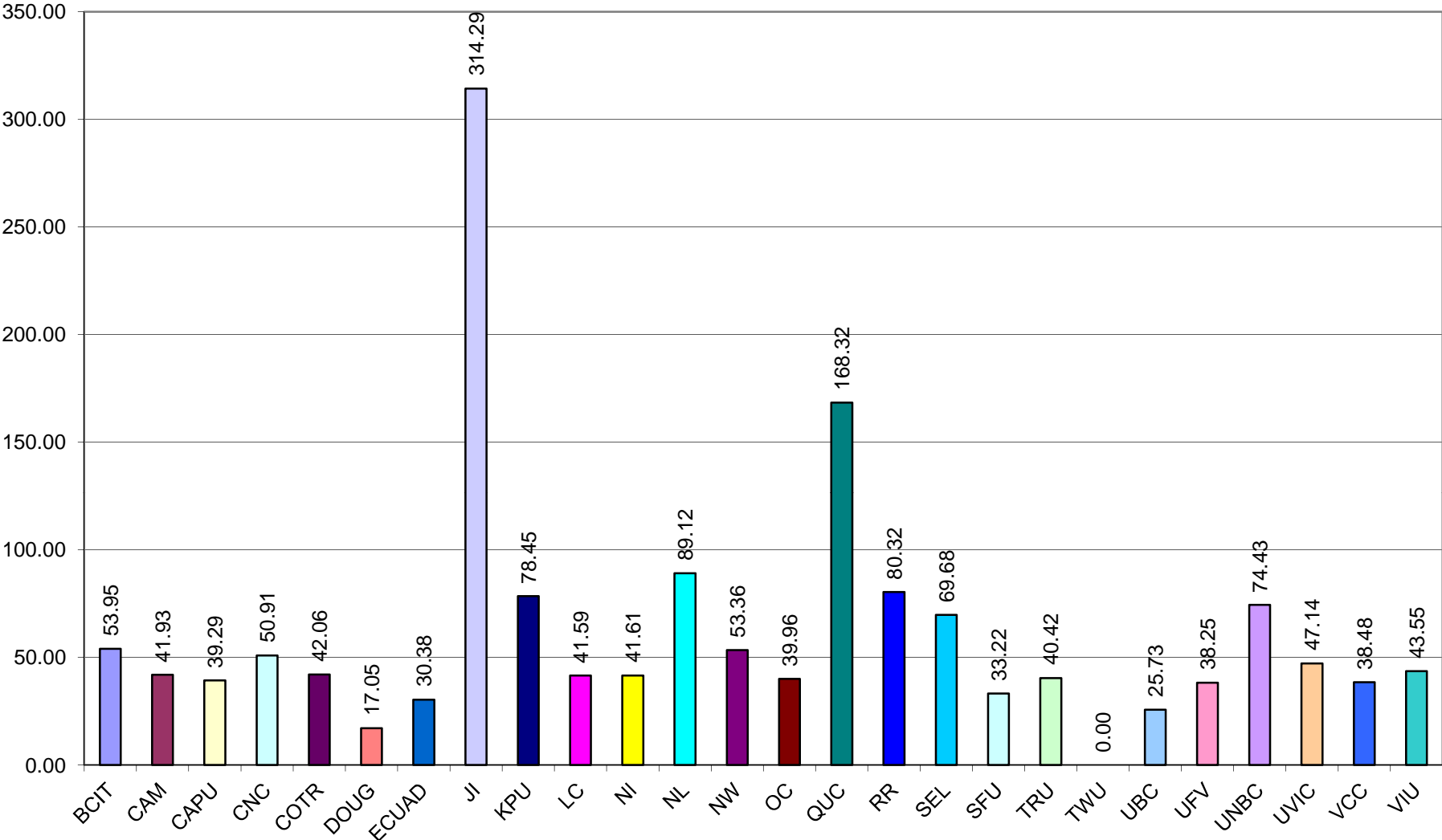
j) Direct Circulation per FTE Student: 6(d)/3(f)



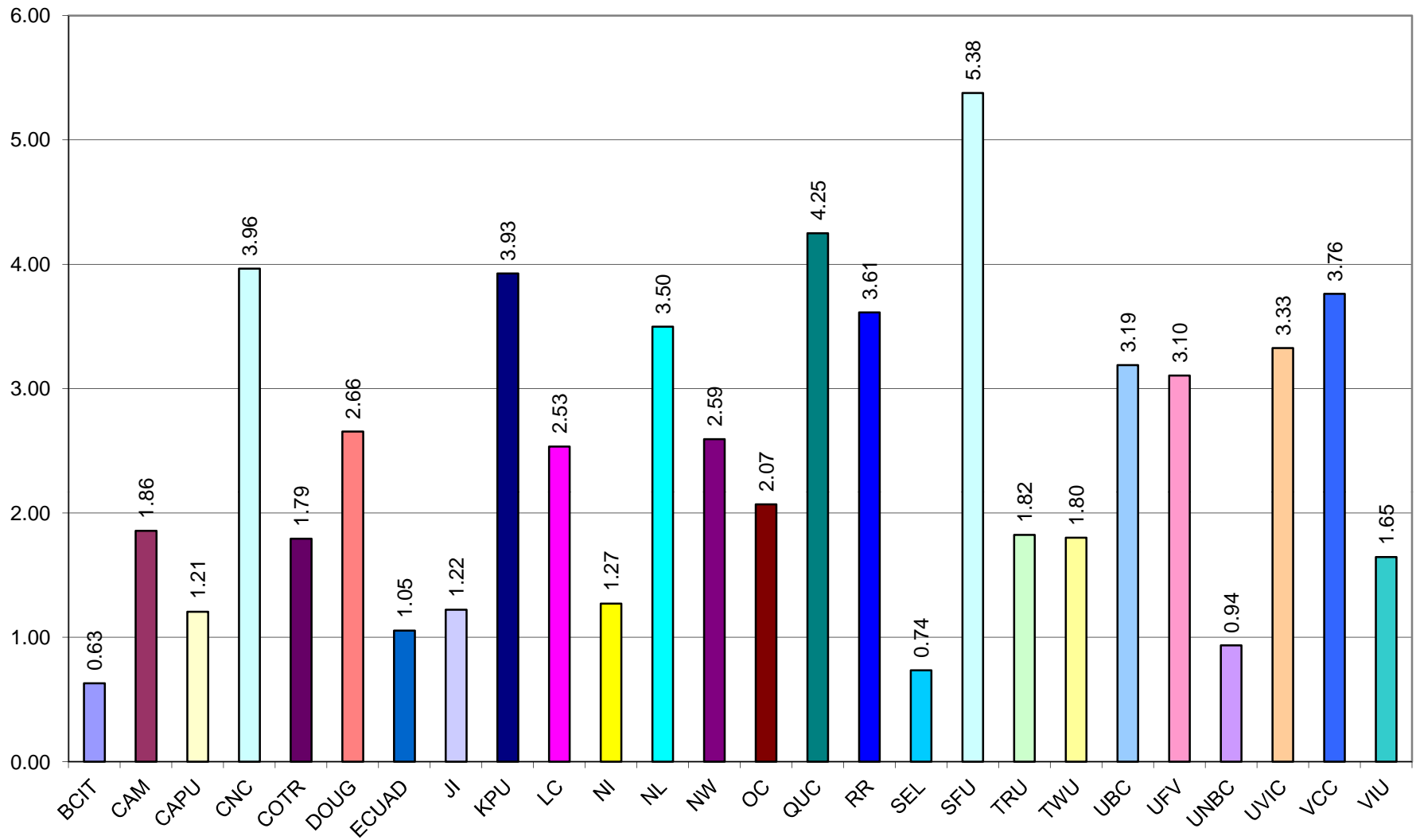
k) Direct Circulation per Total Volumes: 6(d)/5.1(f)



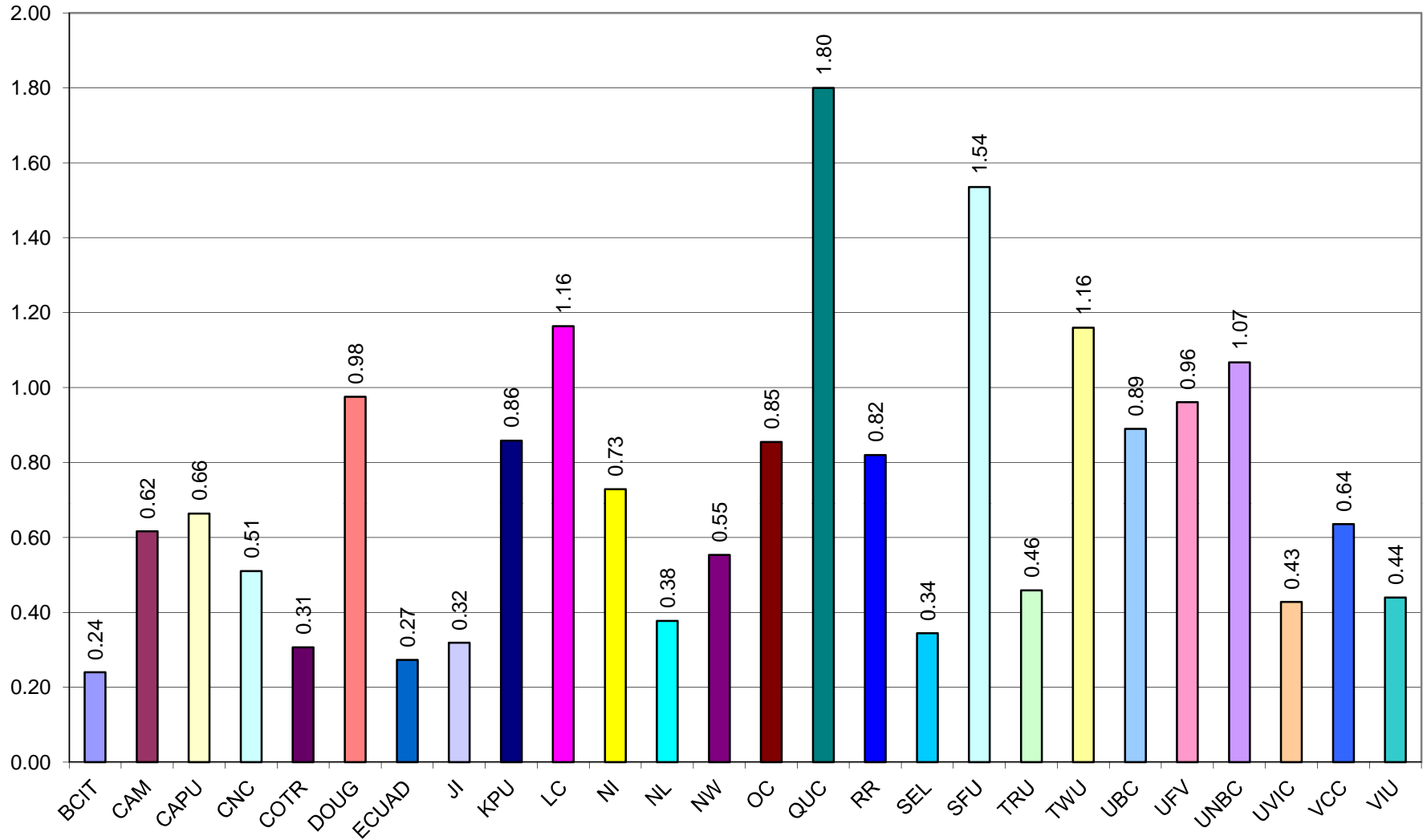
I) Total Library Expenditures per Circulation: 7(m)/6(d)



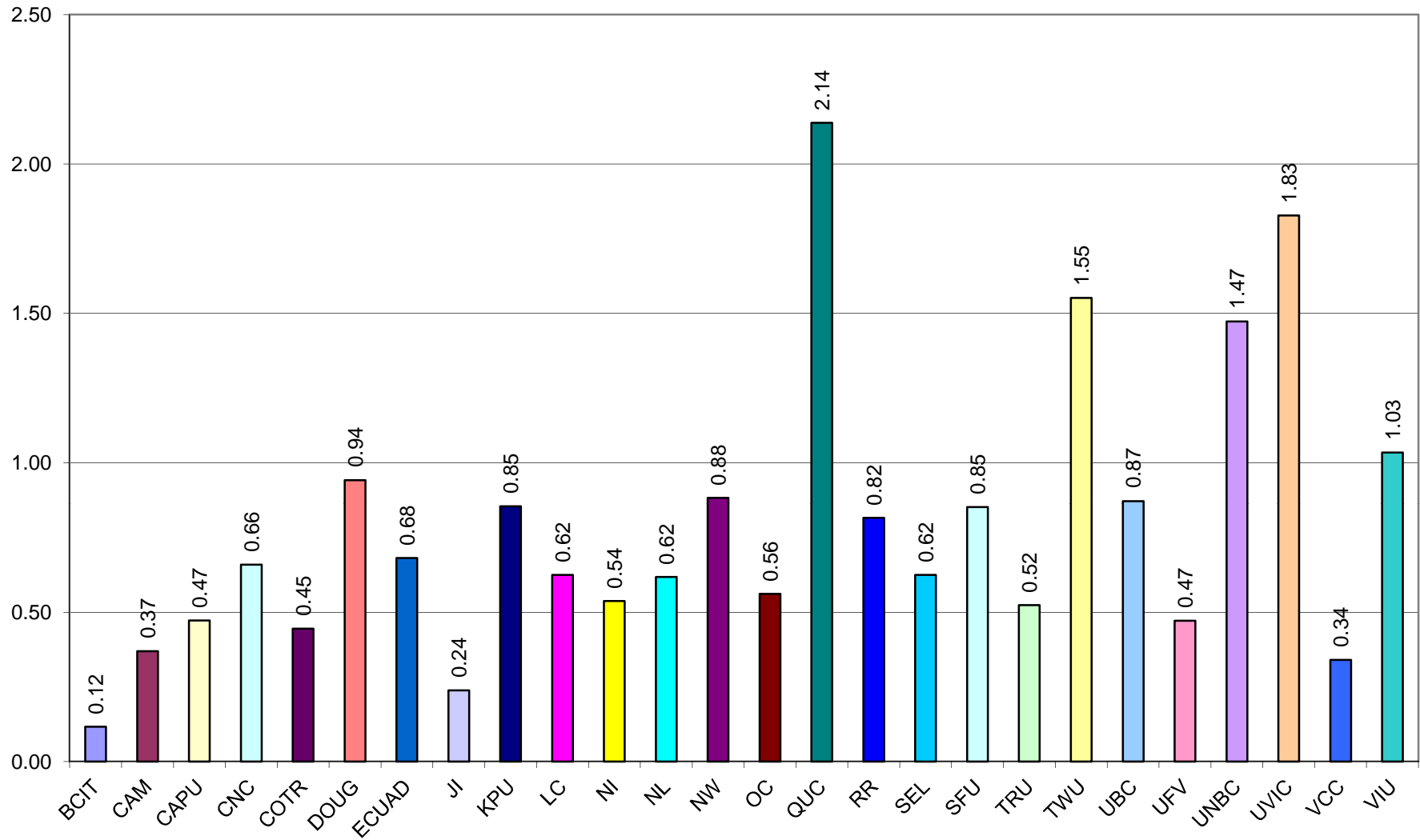
m) Reference Transactions per FTE Student: 6a(iii)/3(f)



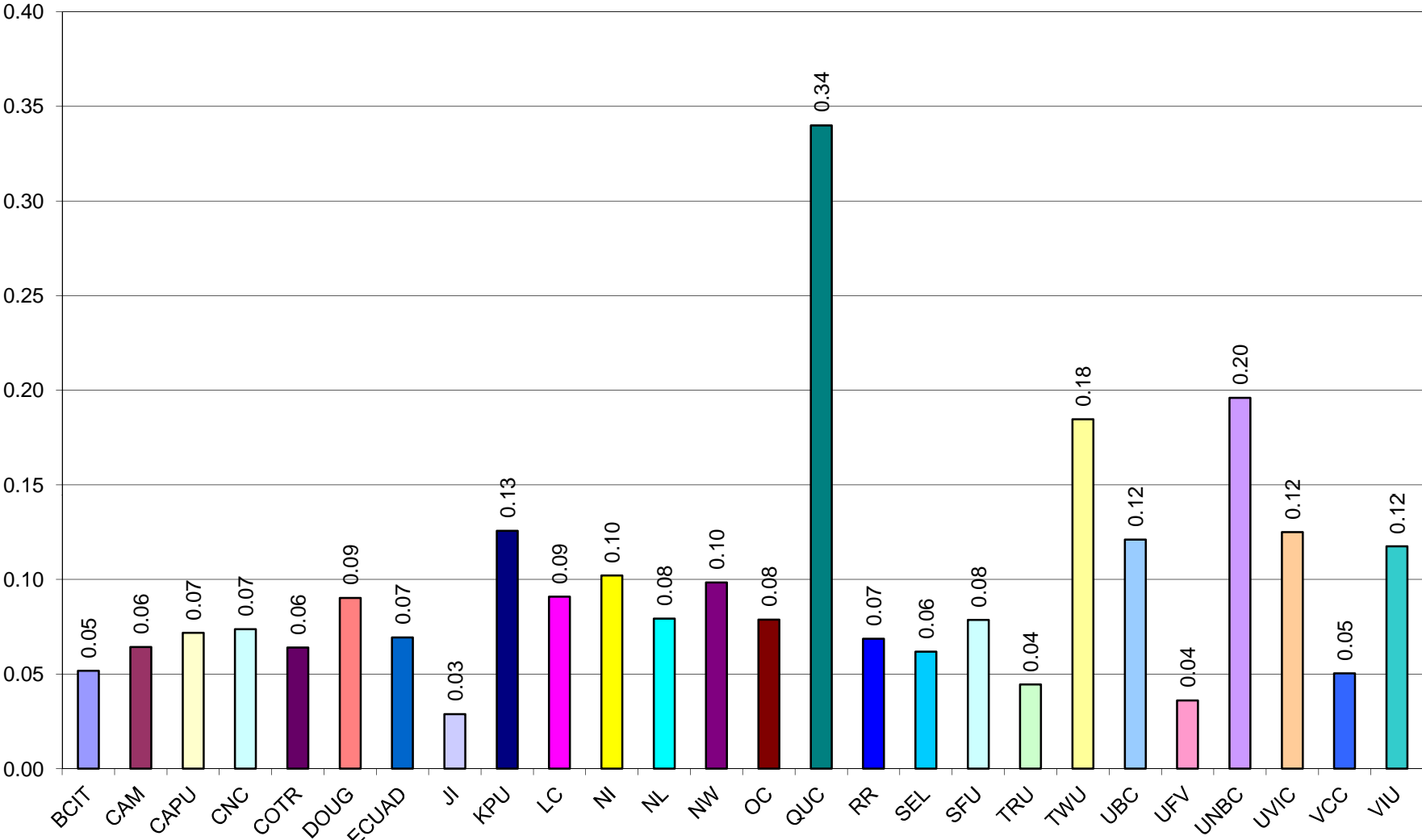
n) Number of Students Instructed per FTE Student: 6(b)/3(f)



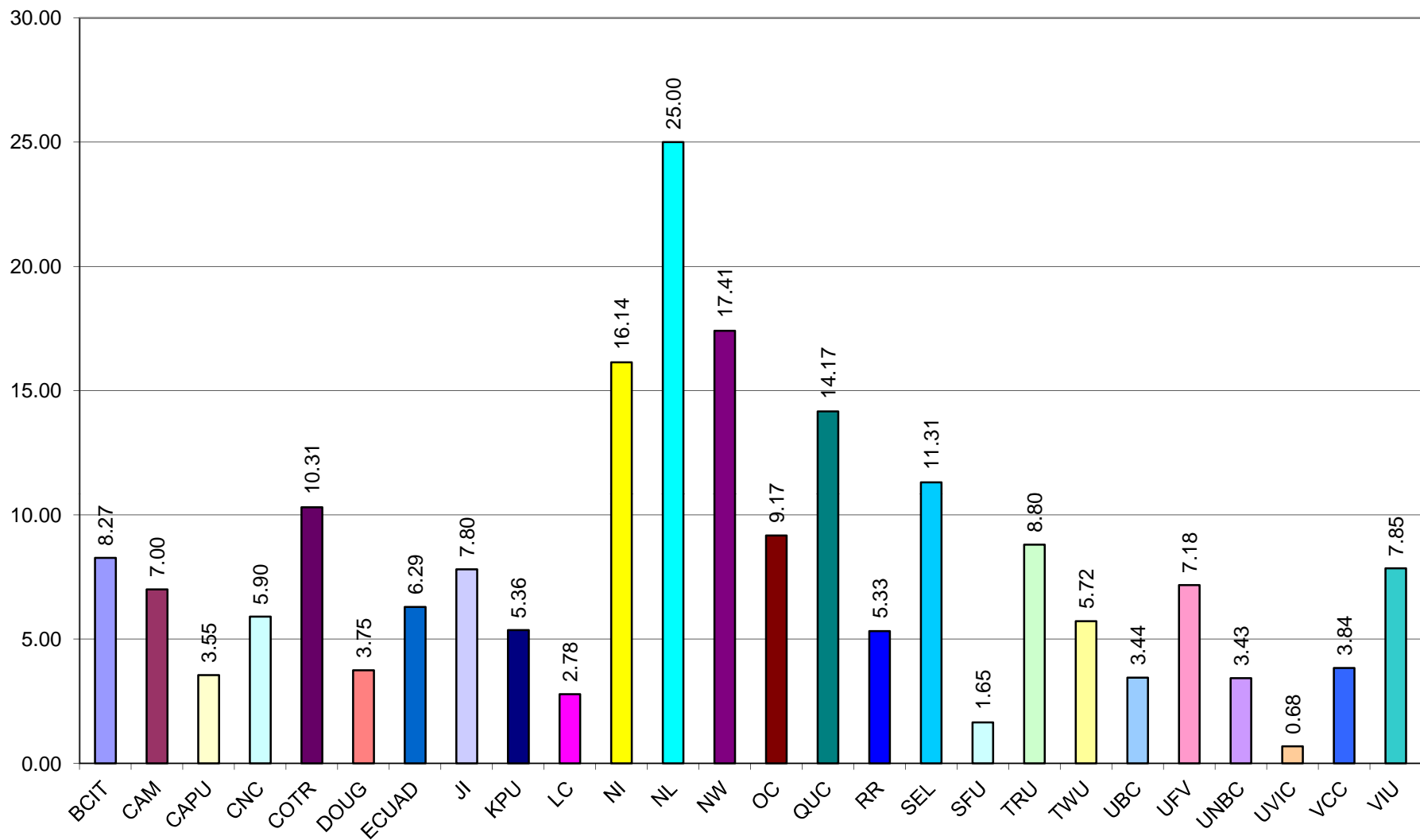
o) Total Library Area per FTE Student: 9(e)/3(f)



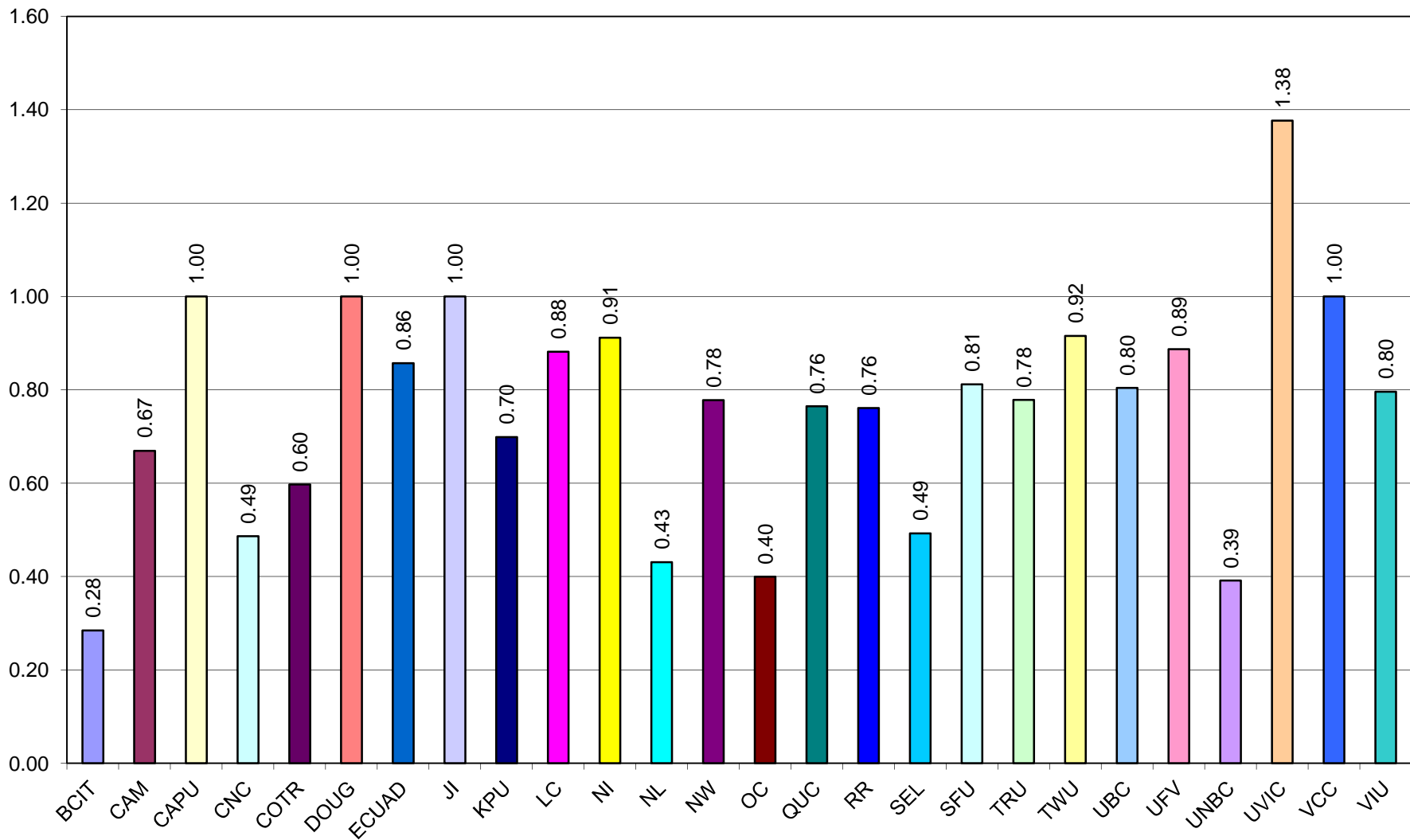
p) Number of Seats per FTE Student: 9(f)/3(f)



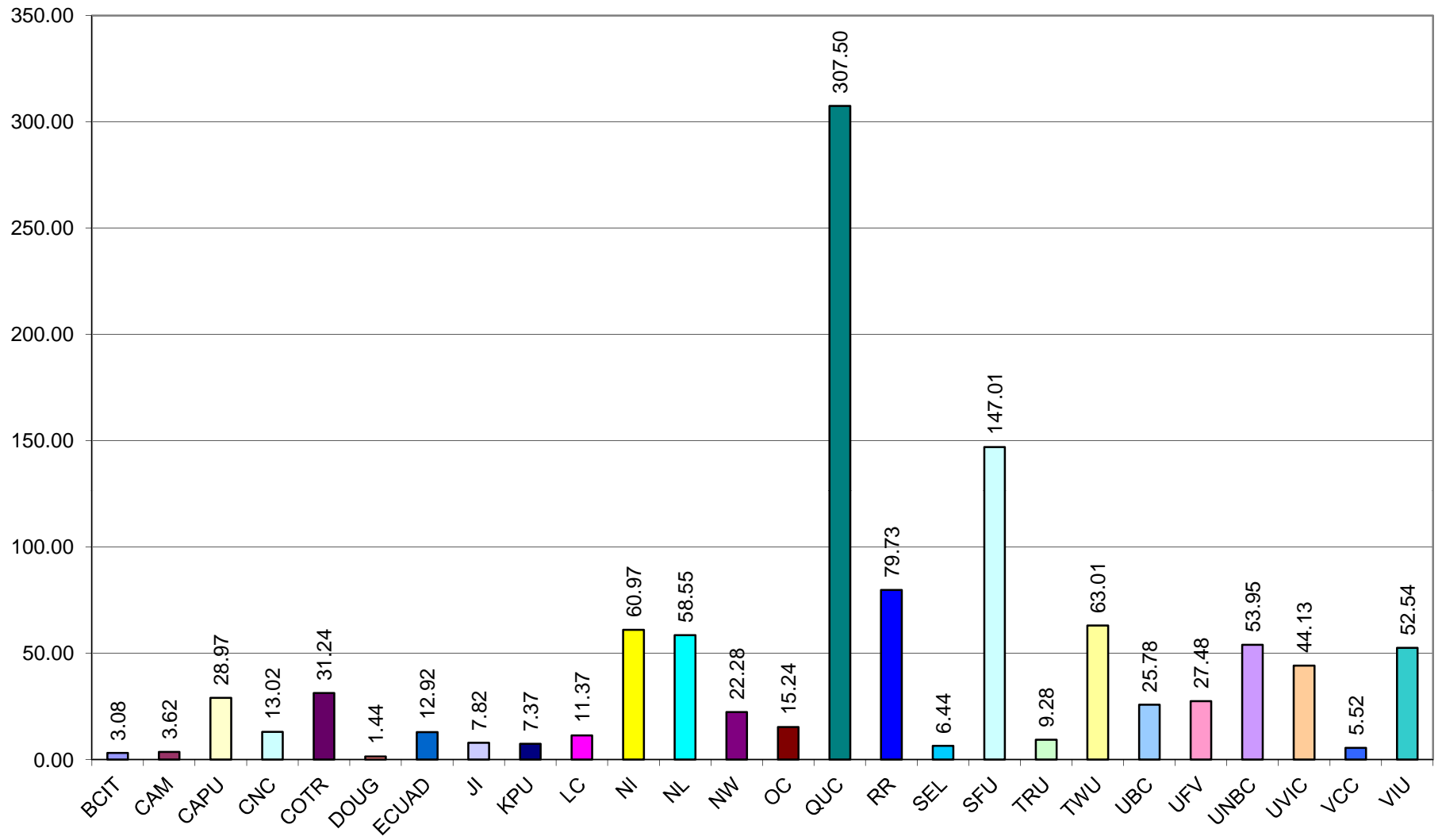
q) Hours Open per FTE Personnel: 9(g)/4(f)



r) Reference Hours per Total Open Hours: 9(h)/9(g)



s) Electronic Titles per FTE Student : 5.2(d) /3(f)



t) Electronic Expenditures per FTE Student: 7(i)/3(f)

