

# **CPSLD Statistics Report**

---

## **2009 - 2010**

Created by:  
Vancouver Community College  
Library and Learning Resources

## **ACKNOWLEDGEMENTS**

On behalf of CPSLD members, I would like to commend and thank Corinna Luk for her time, expertise and ongoing commitment to the completion of the Annual CPSLD Statistics Report.

I would also like to acknowledge the help of Randy Brown ,Sr. Coordinator, Post Secondary Funding, Ministry of Advanced Education and Labour Market Development who provided us with FTE statistics

Lila Heilbrunn  
Director, Library and Learning Resources  
Vancouver Community College  
CPSLD Statistics Compiler, 2010

CPSLD STATISTICS REPORT  
2009/2010

COUNCIL OF POST-SECONDARY LIBRARY DIRECTORS OF B.C.  
LIBRARY/LEARNING RESOURCES CENTRE SURVEY

DEFINITIONS	PAGE 1 to 7
SURVEY	PAGE 1 to 4
LEGEND	PAGE 1
DATA	PAGE 25
RATIOS	PAGE 26
NOTES	PAGE 27
GRAPHS	PAGE 28 to 45

# COUNCIL OF POST-SECONDARY LIBRARY DIRECTORS B.C. LIBRARY/LEARNING RESOURCE CENTRE SURVEY

## DEFINITIONS (Rev. June 9, 2009)

### INTRODUCTION

This annual statistical survey is intended to provide a picture of the holdings and activities of Libraries in colleges, university/colleges, institutes, and universities of British Columbia for the fiscal year (**April 1 - March 31**). All information is based on the total count for one year.

The following activity, although under library jurisdiction in many institutions, is **excluded** from this report:

- audio-visual equipment distribution to classrooms
- audio-visual equipment maintenance
- Media production or instructional media services.

### **A word of caution:**

Comparison among institutions should be made with the understanding that each library operates somewhat differently and counts activities within a context unique to the institution. In addition, as access to electronic information becomes more important, holdings information is not always readily quantifiable or entirely meaningful and expenditure information is not found within the same budget categories in each institutional library.

**Note: Do not add text into any field that will be totalled automatically** as this will prevent the system from performing this addition.

**Note:** use the "Explanatory Notes" section at the bottom of the survey to provide additional information or any variations from the norm.

### **1. TYPE OF LIBRARY**

Self explanatory.

### **2. NUMBER OF CAMPUSES**

Differentiate between those centres which have library staffing from those which are characterized as reading rooms and/or learning centres which have no staff or may have staff paid for by other parts of the institution.

- a. Number of campuses **with** library staff
- b. Number of campuses **without** library staff

### **3. USERS**

#### **FTE students:**

**NOTE – for sections a - f, this data will be completed for you based on data supplied by the Ministry of Advanced Education**

#### **g.FTE faculty:**

- Provide FTE (not head count) of faculty employees (include librarians if applicable); approximate if actual number is not available;

**Community Borrower Fee:**

- Do not include the number of community borrowers as this figure does not represent active users for many institutions; provide only the annual fee if applicable.

**h. Is there a community borrowers fee?**

**i. Fee \$**

**4. LIBRARY PERSONNEL**

- Count all personnel in FTE terms (not head-counts);

**a. FTE librarians:**

- include all part-time and contract librarian hours;
- include Library Director whether this is an administrative position or not;
- include any positions funded by special grants or university-college access funds;

**b. FTE library staff:**

- exclude personnel who are entirely devoted to AV equipment and media production/IMS activities;

**c. FTE other professionals**

- **Include staff who are not librarians in the strict sense of the terms such as computer experts, systems analysts or budget officers.**

**d. Subtotal – FTE Library Personnel: (system will total automatically)**

- provide subtotal of personnel before counting student aides and work-study employees;

**e. FTE student aides:**

- include student aides and work-study employees

**f. Total FTE Library Personnel: (system will total automatically)**

**5. COLLECTIONS**

- **Volumes:** items that are barcoded separately or intended to be circulated as one unit, (e.g. a 20-volume set of encyclopedias = 20 units, 2 CDs plus booklet in one package = 1 unit; book plus CD = 1 unit; set of slides in a binder or a folio = 1 unit).

**a. Monographs:**

- a volume is a physical unit of any printed or processed work contained in one binding, encasement or other clear distinction, which has been catalogued as part of the collection and given an individual barcode;
- **include** titles in microform or CD (not individual cards of fiche except when 1 card = 1 title);
- **include** annuals;
- **exclude** periodicals;
- use explanatory notes for any unusual inclusions (e.g. documents, technical reports, individually catalogued maps).

**b. Videos & Films:**

- count all video & film formats;
- count physical items (e.g. 2 film reels = 2 units, series of 24 videos = 24 units);

**c. Other Audio formats:**

- count all sound recordings (e.g. LP records, cassette tapes, compact disks);
- count items intended to be used together as one unit (e.g. opera on 2 CDs = 1 unit);
- if two or more media are included (e.g. print and cassette tape), count as a single unit all items to be used in conjunction with each other.

**d. Other Visual formats:**

- count all visual formats (e.g. slides, snapshots)
- do not count individual slides unless they do not form part of a set (i.e. 1 slide set = 1 unit);
- if two or more media are included (e.g. print & slides), count as a single unit all items meant to be used in conjunction with each other.

**e. Back Issues Periodicals:**

- **include** journals, magazines, and newspapers received in print, microform, or CD formats;
- count volumes if they are known, otherwise 1 year = 1 volume;
- **include** annual index volumes.

**f. Total Volumes in Library Collection: (system will total automatically)**

- add  $a + b + c + d + e = f$

**Periodicals:**

**g. Total Current Print Subscriptions:**

- count titles of journals, magazines, and newspapers currently received in print, microform, or CD formats (e.g. Canadian Newdisc = 8 titles);
- **exclude** annuals (counted in **a**) above);
- **include** gift subscriptions and those being received on exchange;
- **include** departmental subscriptions only if they are accessible to the college community (i.e. listed in library catalogue and available for use);
- count duplicate subscriptions (i.e. if the library subscribes to two copies of a title count 2);
- **include** Statistics Canada periodicals if they are treated like a periodical;
- **exclude** subscriptions to electronic periodical indexes and abstracts (expenditures information only required in **7.** below).

**Electronic Titles**

**h. Catalogued Electronic Titles**

- **Include** all purchased e-books, NetLibrary, e-journal titles purchased independently (i.e. not included in database subscriptions) and free catalogued websites, e-texts and e-journals
- use explanatory notes for any unusual inclusions (*confusion re classed serials counted as monographs or serials*)

## 6. USE

### a. Reference transactions:

*An information contact that involves the knowledge, use, recommendations, interpretation or instruction in the use of one or more information sources by a member of the library staff. Information sources include printed and non-printed materials, machine-readable databases (including computer-assisted instruction), catalogues and other holdings, records and, through communication or referral, other libraries and institution, and persons both inside and outside the library. Include information and referral services. If a contact includes both reference and directional services, it should be reported as one reference transaction. When a staff member utilizes information gained from a previous use of information sources to answer a question, report as a reference transaction, even if the source is not consulted again during this transaction. Duration should not be an element in determining whether a transaction is a reference transaction. Sampling of a typical week may be used to extrapolate for a full year) CARL definition.*

- count all questions handled (i.e. regular, and extended reference questions);
- **include** questions associated with electronic searching;
- **include** electronic reference questions
- **include** real-time-reference interactions (i.e. virtual reference)
- **exclude** questions associated specifically with a bibliographic instruction class.
- Exclude directional questions as these will be counted separately

This is the way this question will appear on the stats collection form

- 6a (i) Reference questions
- 6a (ii) Directional questions
- 6a (iii) Total

### Library Instruction

### b. Number of participants at group presentations:

- Report total number of participants in the presentations - count all students receiving bibliographic instruction whether in tutorial groups, tours, or library skills classes
- Personal one-on-one instruction in the use of sources should be counted as a reference transaction

### c. Presentations to groups

- **Number of presentations to groups** - Report the total number of library instruction sessions during the year. Count sessions presented as part of formal bibliographic instruction programs including class presentations, orientation sessions and tours. If the library sponsors multi-session credit courses that meet several times over the course of a semester, each session should be counted. Presentations both on and off the premises should be included when they are sponsored by the library. If you are using sampling, please include a footnote
- **include** internet research or database searching classes;
- **include** classes taught to faculty and other employee groups.

**Circulation:**

**d. Direct:**

- count all items which are charged out for use, whether the use is inside (e.g. reserve) or outside the library;
- **include** self/online renewals
- **exclude** items charged out to other libraries on interlibrary loan (included in **g**) below).

**e. In-library use:**

- count those items being used in the library and re-shelved by library employees, but that have not been charged out for use in the direct circulation transaction.

**f. Gate Count**

- Count all traffic upon exit from the library (usually provided via an electric eye on the library security system)

**Interlibrary loan:**

- count all items actually received and sent via interlibrary loan;
- **include** items received or sent via any delivery method and from or to any type of library (including agencies with library holdings) in any part of the world;
- all NET, MEC, OJAC, and fileserver project figures are supplied by the ELN office;
- **exclude** intercampus loans within your institution.

**g. Interlibrary loans received** (include all formats)

**h. Interlibrary loans sent** (include all formats)

**7. LIBRARY EXPENDITURES (capital & operating)**

For purposes of consistency “expenditures” means actual expenditures vs budgeted expenditures.

**a. Personnel (salaries & benefits):**

- count all salary & benefit expenditures for library personnel as listed in **4** above;
- **exclude** personnel not covered by this survey (e.g. AV equipment distribution, Media Production or IMS);
- **include** personnel working under special grant funding or university-college access funding.

**Collections:**

**b. Monographs:**

- count all expenditures on items listed as monographs in **5a** above;

**c. Audio-Visual:**

- count all expenditures on items listed in **5b +5c + 5d** above:

**d. Current Print Periodicals:**

- count all expenditures on current subscriptions to print periodicals and indexes as included in **5g** above.



**e. Special Funding Envelopes for Collections**

- **Include** all expenditures from special funding sources e.g. one time capital grants

**f. Subtotal Collections: (system will total automatically)**

- $b + c + d + e = f$

**Electronic Materials:**

**g. ELN services:**

- count all expenditures as a partner library to ELN subscription services.

**h. Non-ELN subscriptions:**

- count all expenditures on electronic subscription services (index, abstract, and full-text) that are not provided through the ELN service;
- **exclude** subscriptions which are included in **7d** above;
- **include** expenditures on databases (e.g. Wilson Indexes) if they are negotiated through your library and mounted on your local system.

**i. Subtotal Electronic Products (system will total automatically)**

- $g + h = i$

**j. Total Collections Expenditures: (system will total automatically)**

- $f + i = j$

**k. Other:**

- count all other library expenditures (i.e. those expenditures that are not related to personnel and collections);
- **include** only those other costs (e.g. printing, postage, interlibrary loans, mileage, conferences, supplies, etc.) if they are paid by the library's budget;
- use explanatory notes to indicate any variations from the norm.

**l. Total Library Expenditures: (system will total automatically)**

- ii.  $a+j+k$

**8. INSTITUTIONAL BUDGET**

- a. **base ministry grant** as outlined in the grant allocation sent by the ministry to each institution in March (usually) for the next fiscal year;

**b. Other operating funds**

- **include** all items that are considered in calculating your institution's operating budget;
- **exclude** institutional capital (i.e. new building funds, upgrading of present buildings, roads etc.)
- use explanatory notes to provide details on any exceptions or variations from the norm.
- 

**c. Total Institutional Budget: (system will total automatically)**

- $a+b$

**9. FACILITIES & HOURS (system will tally automatically for all sections)**

**e. Total library area in square meters**

- for each campus with library personnel provide library area in square meters ( to convert from square ft. to square meters multiply sq. ft. by .0929, e.g. 30,000 sq. ft. x .0929 = 2787 sq. meters);
- **include** space for books and other library materials, space for storage of AV equipment if control of this equipment is the library's responsibility, library classrooms, study stations, seminar and study rooms, and workspace for library personnel;
- **exclude** areas used solely for janitorial, custodial and mechanical storage or services, lobbies, vestibules, building corridors, and other general access areas;
- add figures for each library to provide total for **e**.

**f. Total number of seats:**

- for each campus with library personnel count all study spaces for library users;
- **exclude** seats in staff areas, offices, meeting rooms, and other areas not normally occupied by users of library materials;
- add figures for each library to provide total for **f**.

**g. Total hours open per week: (September – April)**

- for each campus with library personnel count total operating hours per week;
- add figures for each library to provide total for **g**.

**h. Total reference hours per week: (September – April)**

- for each campus with library personnel count total hours of reference service provided;
- add figures for each library to provide total for **h**.

**10. COMPUTING INFRASTRUCTURE**

- a. Number of public workstations
  - For each campus library, count all public workstations that have Internet access
- b. Wireless available in each library? Y/N (use notes for clarification)
- c. Number of laptops available for borrowing from library
- d. Number of times laptops circulated from library
- e. Number of laptop ports/docking stations available for each campus library
- f. Mobile devices other than laptops supported by library? Y/N if Y, please clarify

**11. LIBRARY AUTOMATED SYSTEMS**

- self explanatory;
- use explanatory notes for any variations.

# CPSLD Statistics 2009-2010

## LIBRARY/LEARNING RESOURCE CENTRE SURVEY

Fiscal Year: \_\_\_\_\_  
Name of Library: \_\_\_\_\_  
Name of Library Director: \_\_\_\_\_  
Statistics contact: \_\_\_\_\_

see definitions

### 1. Type of Library:

College  Institute  University  University College

### 2. Number of Campuses

(a) with Library Staff: \_\_\_\_\_  
(b) without Library Staff: \_\_\_\_\_

### 3. USERS

NOTE - for sections a - f, this data will be completed for you based on data supplied by the Ministry of Advanced Education

(a) FTE AVED Ministry funded: \_\_\_\_\_  
(b) FTE students (audited): \_\_\_\_\_  
(c) ITA (Foundation + Apprenticeship) Funded: \_\_\_\_\_  
(d) ITA (Foundation + Apprenticeship) Actual: \_\_\_\_\_

**(e) Service Plan Total Funded (a + c) (auto calculated):** \_\_\_\_\_

**(f) Service Plan Total Actual (b+d) (auto calculated):** \_\_\_\_\_

(g) FTE faculty: \_\_\_\_\_  
(h) Is there an annual fee for Community Borrowers?  Yes  No  
(i) Fee \$: \_\_\_\_\_

### 4. LIBRARY PERSONNEL

(a) FTE Librarians (including Director): \_\_\_\_\_  
(b) FTE Library Staff: \_\_\_\_\_  
(c) FTE Other Professionals: \_\_\_\_\_  
**(d) FTE Personnel (a+b+c) (auto calculated):** \_\_\_\_\_  
(e) FTE Student Aides: \_\_\_\_\_  
**(f) Total Personnel in FTE (d+e) (auto calculated)** \_\_\_\_\_

### 5. COLLECTIONS (see definitions)

(a) Monographs: \_\_\_\_\_  
(b) Videos and Films: \_\_\_\_\_  
(c) Other Audio Formats: \_\_\_\_\_  
(d) Other Visual Formats: \_\_\_\_\_  
(e) Back Issues Periodicals: \_\_\_\_\_  
**(f) Total Collection (a+b+c+d+e) (auto calculated)** \_\_\_\_\_

## CPSLD Statistics 2009-2010

Periodicals

(g) Total Print Subscriptions: \_\_\_\_\_

Electronic Titles

(h) Catalogued Electronic Titles: \_\_\_\_\_

### 6. USE

a(i) Reference questions: \_\_\_\_\_

a(ii) Directional questions: \_\_\_\_\_

**a(iii) Total (a(i)+a(ii)) (auto calculated):** \_\_\_\_\_  
\_\_\_\_\_

### Library Instruction

(b) No. of Participants at group presentations: \_\_\_\_\_

(c) No. of Presentation to groups: \_\_\_\_\_

### Circulation:

(d) Direct: \_\_\_\_\_

(e) In-library use: \_\_\_\_\_

(f) Gate Count: \_\_\_\_\_

(g) ILL: Received (all formats) \_\_\_\_\_

(h) ILL: Sent (include all formats) \_\_\_\_\_

### 7. LIBRARY EXPENSES (capital & operating)

For purposes of consistency "expenditures" means actual expenditures vs budgeted expenditures.

(a) Personnel (salaries & fringe benefits): \_\_\_\_\_

(b) Monographs: \_\_\_\_\_

(c) Audio-Visual: \_\_\_\_\_

(d) Current Print Periodicals: \_\_\_\_\_

(e) Special Funding Envelopes for Collections: \_\_\_\_\_

**(f) Collection Subtotal (b+c+d+e=f) (auto calculated):** \_\_\_\_\_  
\_\_\_\_\_

(g) ELN Services \_\_\_\_\_

(h) Non-ELN Subscriptions \_\_\_\_\_

**(i) Electronic Products Subtotal (g+h) (auto calculated):** \_\_\_\_\_  
\_\_\_\_\_

**(j) Total Collection Expenditures (f+i) (auto calculated):** \_\_\_\_\_  
\_\_\_\_\_

(k) Other \_\_\_\_\_

**(l) Total Library Expenditures (a+j+k) (auto calculated):** \_\_\_\_\_  
\_\_\_\_\_

### 8. INSTITUTIONAL BUDGET

(a) Base Grant from Ministry \_\_\_\_\_

(b) Other Operating Funds \_\_\_\_\_

**(c) Total Institutional Budget (a+b) (auto calculated):** \_\_\_\_\_  
\_\_\_\_\_

## CPSLD Statistics 2009-2010

### 9. FACILITIES AND HOURS:

For each staffed Library provide

Campus 1

Campus Name: \_\_\_\_\_

(a) Total area in square meters: \_\_\_\_\_

(b) Total number of seats: \_\_\_\_\_

(c) Total hours open per week: \_\_\_\_\_

(d) Total reference hours per week: \_\_\_\_\_

Campus 2

Campus Name: \_\_\_\_\_

(a) Total area in square meters: \_\_\_\_\_

(b) Total number of seats: \_\_\_\_\_

(c) Total hours open per week: \_\_\_\_\_

(d) Total reference hours per week: \_\_\_\_\_

Campus 3

Campus Name: \_\_\_\_\_

(a) Total area in square meters: \_\_\_\_\_

(b) Total number of seats: \_\_\_\_\_

(c) Total hours open per week: \_\_\_\_\_

(d) Total reference hours per week: \_\_\_\_\_

Campus 4

Campus Name: \_\_\_\_\_

(a) Total area in square meters: \_\_\_\_\_

(b) Total number of seats: \_\_\_\_\_

(c) Total hours open per week: \_\_\_\_\_

(d) Total reference hours per week: \_\_\_\_\_

**(e) Total area all campuses (auto calculated):** \_\_\_\_\_

**(f) Total seats all campuses (auto calculated):** \_\_\_\_\_

**(g) Total hours all campuses (auto calculated):** \_\_\_\_\_

**(h) Total ref hours all campuses (auto calculated):** \_\_\_\_\_

### 10. COMPUTING INFRASTRUCTURE

(a) No. of public workstations: \_\_\_\_\_

(b) Wireless available: \_\_\_\_\_

(c) No. of laptops available: \_\_\_\_\_

(d) No. of laptops circulated: \_\_\_\_\_

(e) No. of laptop ports \_\_\_\_\_

(f) Other Mobile devices \_\_\_\_\_

If yes, please clarify \_\_\_\_\_

\_\_\_\_\_  Yes  No (use notes for clarification)

\_\_\_\_\_  Yes  No

## CPSLD Statistics 2009-2010

### 11. LIBRARY AUTOMATED SYSTEM

(Give the name of the system you have, if any)

Cataloguing

Primary source of bibliographic records

Secondary source of bibliographic records

OPAC

Periodicals Check In

Acquisitions

Interlibrary Loans

---

---

---

---

---

---

---

---

---

---

### 12. EXPLANATORY NOTES

---

## LEGEND

BCIT	BRITISH COLUMBIA INSTITUTE OF TECHNOLOGY
CAM	CAMOSUN COLLEGE
CAPU	CAPILANO UNIVERSITY
CNC	COLLEGE OF NEW CALEDONIA
COTR	COLLEGE OF THE ROCKIES
DOUG	DOUGLAS COLLEGE
ECUAD	EMILY CARR UNIVERSITY OF ART AND DESIGN
JI	JUSTICE INSTITUTE OF B.C.
KPU	KWANTLEN POLYTECHNIC UNIVERSITY
LC	LANGARA COLLEGE
NI	NORTH ISLAND COLLEGE
NL	NORTHERN LIGHTS COLLEGE
NW	NORTHWEST COMMUNITY COLLEGE
OC	OKANAGAN COLLEGE
QUC	QUEST UNIVERSITY CANADA
RR	ROYAL ROADS UNIVERSITY
SEL	SELKIRK COLLEGE
SFU	SIMON FRASER UNIVERSITY
TRU	THOMPSON RIVERS UNIVERSITY
TWU	TRINITY WESTERN UNIVERSITY
UBC	UNIVERSITY OF BRITISH COLUMBIA
UFV	UNIVERSITY OF THE FRASER VALLEY
UNBC	UNIVERSITY OF NORTHERN BRITISH COLUMBIA
UVIC	UNIVERSITY OF VICTORIA
VCC	VANCOUVER COMMUNITY COLLEGE
VIU	VANCOUVER ISLAND UNIVERSITY

				1. LIBRARY	2. CAMPUS STAFF RATIO	
					a	b
	Name of Library	Name of Library Director	Statistics contact	Library Type	No. of Campuses with Library Staff	No. of Campuses without Library Staff
<b>BCIT</b>	BCIT	David Pepper	David Pepper	Institute	3	2
<b>CAM</b>	Camosun College	Sybil Harrison	Sybil Harrison	College	2	1
<b>CAPU</b>	Capilano University	George Modenesi	George Modenesi	University	1	2
<b>CNC</b>	College of New Caledonia	Katherine Plett	Katherine Plett	College	4	3
<b>COTR</b>	College of the Rockies	Petra Mauerhoff	Petra Mauerhoff	College	1	5
<b>DOUG</b>	Douglas College	Carole Compton-Smith	Carole Compton-Smith	College	2	0
<b>ECUAD</b>	Emily Carr University of Art & Design	Sheila Wallace	Sheila Wallace	University	1	0
<b>JI</b>	Justice Institute of B.C.	April Haddad	April Haddad	Institute	1	6
<b>KPU</b>	Kwantlen Polytechnic University	Cathy MacDonald	Cathy MacDonald	University	4	0
<b>LC</b>	Langara College	Grace Makarewicz	Grace Makarewicz	College	1	0
<b>NI</b>	North Island College	Mary Anne Guenther	Mary Anne Guenther	College	4	0
<b>NL</b>	Northern Lights College	Janet H. Beavers	Janet H. Beavers	College	2	5
<b>NW</b>	Northwest Community College	Melanie Wilke	Melanie Wilke	College	3	3



				1. LIBRARY	2. CAMPUS STAFF RATIO	
					a	b
	Name of Library	Name of Library Director	Statistics contact	Library Type	No. of Campuses with Library Staff	No. of Campuses without Library Staff
<b>OC</b>	Okanagan College	Ross Tyner	Ross Tyner	College	4	0
<b>QUC</b>	Quest University Canada	Venessa Wallsten	Venessa Wallsten	University	1	0
<b>RR</b>	Royal Roads University	Rosie Croft	Rosie Croft	University	1	N/A
<b>SEL</b>	Selkirk College	Gregg Currie	Gregg Currie	College	3	4
<b>SFU</b>	Simon Fraser University	Lynn Copeland	Todd Mundle	University	3	0
<b>TRU</b>	Thompson Rivers University	Nancy Levesque	Nancy Levesque	University	2	0
<b>TWU</b>	Trinity Western University	Ted Goshulak	Ted Goshulak	University	1	0
<b>UBC</b>	University of British Columbia	Ingrid Parent	Margaret Friesen	University	2	0
<b>UFV</b>	University of the Fraser Valley	Kim Isaac	Kim Isaac	University	3	1
<b>UNBC</b>	University of Northern British Columbia	Gohar Ashoughian	Heather Empey	Academic	1	4
<b>UVIC</b>	University of Victoria	Marnie Swanson	Chelsea Garside	University	1	0
<b>VCC</b>	Vancouver Community College	Lila Heilbrunn	Lila Heilbrunn	College	2	0
<b>VIU</b>	Vancouver Island University	Bob Foley	Bob Foley	University	3	1

3. USERS									
	a	b	c	d	a+c=e	b+d=f	g	h	i
	FTE AVED Ministry funded	FTE Students (audited)	ITA (Foundation + Apprenticeship) Funded	ITA (Foundation + Apprenticeship) Actual	Service plan total funded	Service plan total Actual	FTE faculty	Annual fee for Community Borrowers?	FEE \$
<b>BCIT</b>	11,689.00	11,904.29	5,846.00	6,747.16	17,535.00	18,651.45	1,012.00	Yes	50
<b>CAM</b>	7,139.00	7,196.80	2,151.00	2,549.00	9,290.00	9,745.80	454.00	No	
<b>CAPU</b>	5,450.00	5,349.89	38.00	12.00	5,488.00	5,361.89	401.39	Yes	25
<b>CNC</b>	3,197.00	2,357.08	1,491.00	1,493.33	4,688.00	3,850.41	254.00	No	0
<b>COTR</b>	1,782.00	1,791.08	626.00	673.02	2,408.00	2,464.10	135.50	No	0
<b>DOUG</b>	8,363.00	7,682.80	48.00	15.50	8,411.00	7,698.30	458.00	Yes	25
<b>ECUAD</b>	1,391.00	1,524.11	-	-	1,391.00	1,524.11	102.93	Yes	60
<b>JI</b>	2,320.00	2,446.99	-		2,320.00	2,446.99	108.00	No	0
<b>KPU</b>	9,077.00	8,507.00	1,256.00	1,382.50	10,333.00	9,889.50	993.00	Yes	20
<b>LC</b>	7,046.00	7,128.00	-	-	7,046.00	7,128.00	401.00	semi-annual	15
<b>NI</b>	2,214.00	1,883.46	662.00	640.56	2,876.00	2,524.02	140.00	No	0
<b>NL</b>	1,481.00	946.32	595.00	610.39	2,076.00	1,556.71	85.00	No	n/a
<b>NW</b>	1,761.00	1,689.21	484.00	469.21	2,245.00	2,158.42	134.33	No	0

<b>3. USERS</b>									
	<b>a</b>	<b>b</b>	<b>c</b>	<b>d</b>	<b>a+c=e</b>	<b>b+d=f</b>	<b>g</b>	<b>h</b>	<b>i</b>
	FTE AVED Ministry funded	FTE Students (audited)	ITA (Foundation + Apprenticeship) Funded	ITA (Foundation + Apprenticeship) Actual	Service plan total funded	Service plan total Actual	FTE faculty	Annual fee for Community Borrowers?	FEE \$
<b>OC</b>	4,801.00	5,018.62	2,607.00	3,076.75	7,408.00	8,095.37	377.00	Yes	20
<b>QUC</b>		265.00			-	265.00	18.00	N/A	
<b>RR</b>	1,980.00	2,013.30	-	-	1,980.00	2,013.30	51.00	Yes	25
<b>SEL</b>	2,332.00	1,984.50	525.00	600.40	2,857.00	2,584.90	150.00	No	
<b>SFU</b>	20,105.00	21,866.49	-	-	20,105.00	21,866.49	938.00	Yes	100
<b>TRU</b>	8,046.00	7,932.72	1,410.00	1,517.89	9,456.00	9,450.61	455.00	Yes	25
<b>TWU</b>						2,134.00	125.00	Yes	60
<b>UBC</b>	41,488.00	42,264.10	-	-	41,488.00	42,264.10	6,022.00	Yes	120
<b>UFV</b>	6,608.00	6,858.98	427.00	544.92	7,035.00	7,403.90	425.00	Yes	25
<b>UNBC</b>	3,396.00	3,004.78	-	-	3,396.00	3,004.78	191.00	Yes	25
<b>UVIC</b>	16,402.00	16,379.00	-	-	16,402.00	16,379.00	779.50	Yes	50
<b>VCC</b>	6,570.00	6,018.41	1,567.00	1,642.54	8,137.00	7,660.95	435.61	No	0
<b>VIU</b>	6,652.00	6,443.00	1,243.00	1,251.00	7,895.00	7,694.00	507.47	Yes	50

	<b>4. LIBRARY PERSONNEL</b>					
	<b>a</b>	<b>b</b>	<b>c</b>	<b>a+b+c=d</b>	<b>e</b>	<b>d + e = f</b>
	<b>FTE Librarians (including Director)</b>	<b>FTE Library Staff</b>	<b>FTE Other Professionals</b>	<b>FTE Personnel</b>	<b>FTE Student Aides</b>	<b>Total Personnel in FTE</b>
<b>BCIT</b>	10.36	20.91	2.05	33.32	0.00	33.32
<b>CAM</b>	5.50	12.53		18.03	0.00	18.03
<b>CAPU</b>	6.08	12.55		18.63	0.00	18.63
<b>CNC</b>	4.00	8.20		12.20	0.00	12.20
<b>COTR</b>	0.62	4.81		5.43	0.00	5.43
<b>DOUG</b>	10.80	26.00		36.80	1.77	38.57
<b>ECUAD</b>	3.60	7.14		10.74	0.49	11.23
<b>JI</b>	4.00	3.20		7.20	0.00	7.20
<b>KPU</b>	15.20	29.00	2.00	46.20	6.00	52.20
<b>LC</b>	10.61	16.00	1.00	27.61	0.95	28.56
<b>NI</b>	2.00	7.50		9.50	1.00	10.50
<b>NL</b>	2.00	4.50		6.50		6.50
<b>NW</b>	2.90	5.60		8.50	0.40	8.90

	<b>4. LIBRARY PERSONNEL</b>					
	<b>a</b>	<b>b</b>	<b>c</b>	<b>a+b+c=d</b>	<b>e</b>	<b>d + e = f</b>
	<b>FTE Librarians (including Director)</b>	<b>FTE Library Staff</b>	<b>FTE Other Professionals</b>	<b>FTE Personnel</b>	<b>FTE Student Aides</b>	<b>Total Personnel in FTE</b>
<b>OC</b>	9.00	22.00		31.00	2.00	33.00
<b>QUC</b>	1.60	2.00		3.60	0.60	4.20
<b>RR</b>	4.80	2.80	10.70	18.30	0.00	18.30
<b>SEL</b>	3.00	5.80		8.80	0.00	8.80
<b>SFU</b>	41.80	82.12	15.00	138.92	8.70	147.62
<b>TRU</b>	8.00	11.40		19.40	0.45	19.85
<b>TWU</b>	6.50	3.50	1.00	11.00	4.00	15.00
<b>UBC</b>	86.35	166.75	32.70	285.80	39.20	325.00
<b>UFV</b>	6.59	16.33		22.92	0.89	23.81
<b>UNBC</b>	7.00	12.90	2.00	21.90	2.93	24.83
<b>UVIC</b>	34.00	95.79	13.00	142.79	18.82	161.61
<b>VCC</b>	8.50	20.80		29.30	0.54	29.84
<b>VIU</b>	8.60	17.71		26.31	2.00	28.31

5. COLLECTIONS								
	a	b	c	d	e	a+b+c+d+e = f	g	h
	Monographs	Videos & Films	Other Audio Formats	Other Visual Formats	Back Issues Periodicals	Total Collection	Total Print Subscriptions	Catalogued Electronic Titles
<b>BCIT</b>	161,541	9,693	196		16,870	188,300	443	4,916
<b>CAM</b>	53,345	4,202	285	439	30,717	88,988	249	56,634
<b>CAPU</b>	117,665	5,216	3,607		18,724	145,212	381	4,789
<b>CNC</b>	165,961	6,471	1,000	461	21,989	195,882	332	3,256
<b>COTR</b>	49,629	5,691	327	112	18,839	74,598	63	1,440
<b>DOUG</b>	155,438	11,740	6,808	354	15,085	189,425	860	4,746
<b>ECUAD</b>	30,212	4,253	1,014	148,000	4,492	187,971	178	
<b>JI</b>	23,829	4,403	176	11	4,887	33,306	167	2,124
<b>KPU</b>	178,934	8,724	1,472	508	15,224	204,862	939	17,900
<b>LC</b>	90,916	11,356	974	306		103,552	316	23,575
<b>NI</b>	31,895	2,536	46		1,495	35,972	311	23,628
<b>NL</b>	40,255	4,810	75	36		45,176	129	904
<b>NW</b>	59,278	4,797	960		20,580	85,615	213	1,071

5. COLLECTIONS								
	a	b	c	d	e	a+b+c+d+e = f	g	h
	Monographs	Videos & Films	Other Audio Formats	Other Visual Formats	Back Issues Periodicals	Total Collection	Total Print Subscriptions	Catalogued Electronic Titles
OC	131,404	9,089	581			141,074	610	54,065
QUC	7,112	168			2,412	9,692	64	
RR	138,630	699			11,751	151,080	110	44,537
SEL	73,508	4,106	684	69	9,000	87,367	391	925
SFU	2,374,955	12,464	128,671	1,170,175	290,655	3,976,920	6,133	907,231
TRU	216,856	11,155	1,533	404	30,152	260,100	522	41,325
TWU	231,491	4,375	1,050		85,000	321,916	775	13,889
UBC	11,037,674	34,399	75,820	523,301	97,820	11,769,014	97,820	668,328
UFV	174,757	9,001	429	544	27,890	212,621	599	82,011
UNBC	356,731	4,194	179	453		361,557	660	62,834
UVIC	1,372,792	11,143	70,467			1,454,402	7,040	43,681
VCC	63,109	7,795	6,803	5	11,316	89,028	246	1,668
VIU	262,630	7,855	5,073	2,330		277,888	374	57,929

	<b>6. USE</b>									
	<b>a (i)</b>	<b>a (ii)</b>	<b>a(i)+a(ii)=a (iii)</b>	<b>b</b>	<b>c</b>	<b>d</b>	<b>e</b>	<b>f</b>	<b>g</b>	<b>h</b>
	Reference Questions	Directional questions	<b>Total Reference Transactions</b>	No. of Participants at group presentations	No. of Presentations to groups	Circulation: Direct	Circulation: In-Library Use	Gate Count	ILL: Received (all formats)	ILL: Sent (include all formats)
<b>BCIT</b>	10,243	3,231	13,474	3,463	195	63,931	30,776	674,001	1,104	893
<b>CAM</b>	9,023	3,362	12,385	5,771	210	49,236	6,602		939	635
<b>CAPU</b>	5,801	567	6,368	4,410	150	40,304		373,371	364	543
<b>CNC</b>	12,669		12,669	1,915	125	26,603	23,940	169,849	675	823
<b>COTR</b>	2,794	10,086	12,880	553	30	9,053	901	137,443	174	252
<b>DOUG</b>	23,813	2,542	26,355	8,440	362	187,004	11,629	648,037	1,162	1,127
<b>ECUAD</b>	1,823	3,185	5,008	428	63	44,898			153	118
<b>JI</b>	2,473	1,023	3,496	409	24	6,693	718	31,294	90	629
<b>KPU</b>	22,106	17,949	40,055	7,335	300	60,621	5,189	756,223	2,589	820
<b>LC</b>	13,452		13,452	5,401	219	67,772	26,117	528,806	1,307	759
<b>NI</b>	4,094		4,094	1,150		15,624	4,483	170,011	1,580	418
<b>NL</b>	575	2,959	3,534	327	34	6,577	470	80,947	907	408
<b>NW</b>	852	346	1,198	875	49	11,443		39,485	339	396



	<b>6. USE</b>									
	<b>a (i)</b>	<b>a (ii)</b>	<b>a(i)+a(ii)=a (iii)</b>	<b>b</b>	<b>c</b>	<b>d</b>	<b>e</b>	<b>f</b>	<b>g</b>	<b>h</b>
	Reference Questions	Directional questions	<b>Total Reference Transactions</b>	No. of Participants at group presentations	No. of Presentations to groups	Circulation: Direct	Circulation: In-Library Use	Gate Count	ILL: Received (all formats)	ILL: Sent (include all formats)
<b>OC</b>	10,636	5,253	15,889	5,545	246	56,270			1,951	679
<b>QUC</b>	258	1,183	1,441	230	12	1,098	224	48,656	68	-
<b>RR</b>	2,894	2,961	5,855	1,502	49	19,270	859	66,980	799	219
<b>SEL</b>	1,721		1,721	825	72	15,099	3,908	98,158	486	410
<b>SFU</b>	63,164	95,912	159,076	26,662	853	588,049	167,660	1,974,295	12,094	14,015
<b>TRU</b>	12,603	3,206	15,809	4,024	223	122,611	19,617	230,039	2,756	3,188
<b>TWU</b>	4,101	125	4,226	2,200	38	98,851		162,721	969	300
<b>UBC</b>	87,730	83,857	171,587	34,055	1,354	2,197,871		4,085,389	15,907	27,140
<b>UFV</b>			24,248	7,350	294	104,688	15,100	372,176	2,726	909
<b>UNBC</b>	2,359	2,469	4,828	1,872	109	39,598		4,762	3,092	1,036
<b>UVIC</b>	48,420	22,151	70,571	6,785	383	364,233	152,214	1,388,199	8,575	17,300
<b>VCC</b>	20,886	6,744	27,630	4,292	223	49,378	31,778	367,483	893	653
<b>VIU</b>	19,359		19,359	4,695	177	89,639		368,979	4,614	1,191

	7. LIBRARY EXPENDITURES (CAPITAL AND OPERATING)								
	a	b	c	d	e	b+c+d+e=f	g	h	g+h=i
	Personnel (Salaries and fringe benefits)	Monographs	Audio-Visual	Current Print Periodicals	Special Funding Envelopes for Collections	Collections Subtotal	ELN Services	Non-ELN Subscriptions	Electronic Products Subtotal
<b>BCIT</b>	2,424,783.00	158,007.00		118,128.00		276,135.00	97,334.00	289,648.00	386,982.00
<b>CAM</b>	1,304,642.70	92,833.72	21,891.75	50,249.63		164,975.10	\$66,678.68	45,321.46	112,000.14
<b>CAPU</b>	995,604.26	81,310.00	10,324.00	81,390.00		173,024.00	61,069.00	41,027.00	102,096.00
<b>CNC</b>	786,014.00	84,000.00		56,076.00		140,076.00	54,521.00		54,521.00
<b>COTR</b>	295,871.63	26,403.59	11,946.52	2,376.73		40,726.84	19,339.17	9,530.68	28,869.85
<b>DOUG</b>	2,329,500.00	188,000.00	54,900.00	100,800.00		343,700.00	120,000.00	58,000.00	178,000.00
<b>ECUAD</b>	727,796.00	40,278.00	24,983.00	22,482.00		87,743.00	44,990.00	18,850.00	63,840.00
<b>JI</b>	480,232.00	35,053.00	22,370.00	37,867.00	4,000.00	99,290.00	59,197.00	14,093.00	73,290.00
<b>KPU</b>	2,923,525.00	369,011.16	37,739.93	141,164.34	42,906.56	590,821.99	173,521.49	132,654.24	306,175.73
<b>LC</b>	2,030,719.00	78,365.30	35,460.15	45,998.19		159,823.64	63,211.86	61,326.31	124,538.17
<b>NI</b>	454,241.00	39,976.00		19,377.00		59,353.00	23,013.00	9,113.00	32,126.00
<b>NL</b>	392,875.00	16,673.00	13,600.00	10,775.00		41,048.00	37,948.00	4,244.00	42,192.00
<b>NW</b>	524,605.72	55,000.00	6,000.00	15,509.14		76,509.14	21,832.35	5,266.05	27,098.40

	7. LIBRARY EXPENDITURES (CAPITAL AND OPERATING)								
	a	b	c	d	e	b+c+d+e=f	g	h	g+h=i
	Personnel (Salaries and fringe benefits)	Monographs	Audio-Visual	Current Print Periodicals	Special Funding Envelopes for Collections	Collections Subtotal	ELN Services	Non-ELN Subscriptions	Electronic Products Subtotal
<b>OC</b>	1,770,582.00	242,662.00	33,136.00	125,716.00	305,355.00	706,869.00	110,425.00	135,099.00	245,524.00
<b>QUC</b>	210,607.00	50,000.00	1,500.00	6,500.00		58,000.00	1,650.00	33,350.00	35,000.00
<b>RR</b>	1,013,847.00	78,400.00	4,679.00	11,913.00		94,992.00	87,765.00	289,243.00	377,008.00
<b>SEL</b>	599,177.00	34,097.00	3,939.00	44,004.00	10,000.00	92,040.00	33,497.00	1,637.00	35,134.00
<b>SFU</b>	10,316,413.00	2,441,412.00	122,535.00	816,012.00	210,192.00	3,590,151.00	254,489.00	4,766,561	5,021,050.00
<b>TRU</b>	1,283,507.00	254,877.00	23,590.00	179,181.00		457,648.00	144,391.00	569,850.00	714,241.00
<b>TWU</b>							82,790.00	98,717.00	181,507.00
<b>UBC</b>	21,202,785.00	3,160,655.00		3,000,591.00		6,161,246.00	404,059.00	9,608,598.00	10,012,657.00
<b>UFV</b>	1,596,448.45	292,769.00	6,990.00	181,203.00		480,962.00	135,046.00	379,917.00	514,963.00
<b>UNBC</b>	1,415,317.00	592,233.00	13,489.00	336,965.00		942,687.00	119,154.00	908,778.00	1,027,932.00
<b>UVIC</b>	8,197,440.00	1,836,643.00		979,453.00		2,816,096.00	261,404.55	3,345,956.45	3,607,361.00
<b>VCC</b>	2,222,076.00	111,743.07	59,174.49	31,433.45	31,482.24	233,833.25	68,923.90	30,031.00	98,954.90
<b>VIU</b>	1,669,170.47	181,226.76		69,409.48		250,636.24	103,036.00	431,654.89	534,690.89

	$f + i = j$	k	$a+j+k= l$
	Total Collection Expenditures	Other	Total Library Expenditures
<b>BCIT</b>	663,117.00		3,087,900.00
<b>CAM</b>	276,975.24	149,221.32	1,730,839.26
<b>CAPU</b>	275,120.00	81,928.35	1,352,652.61
<b>CNC</b>	194,597.00	41,162.00	1,021,773.00
<b>COTR</b>	69,596.69	28,520.67	393,988.99
<b>DOUG</b>	521,700.00	86,400.00	2,937,600.00
<b>ECUAD</b>	151,583.00		879,379.00
<b>JI</b>	172,580.00	33,458.00	686,270.00
<b>KPU</b>	896,997.72	505,271.28	4,325,794.00
<b>LC</b>	284,361.81	-	2,315,080.81
<b>NI</b>	91,479.00	31,297.00	577,017.00
<b>NL</b>	83,240.00	15,822.00	491,937.00
<b>NW</b>	103,607.54	24,822.90	653,036.16

	$f + i = j$	k	$a+j+k= l$
	Total Collection Expenditures	Other	Total Library Expenditures
<b>OC</b>	952,393.00	134,430.00	2,857,405.00
<b>QUC</b>	93,000.00		303,607.00
<b>RR</b>	472,000.00		1,485,847.00
<b>SEL</b>	127,174.00	48,317.00	774,668.00
<b>SFU</b>	8,611,201.00	767,511.00	19,695,125.00
<b>TRU</b>	1,171,889.00	180,278.00	2,635,674.00
<b>TWU</b>			
<b>UBC</b>	16,173,903.00	4,434,549.00	41,811,237.00
<b>UFV</b>	995,925.00	119,895.04	2,712,268.49
<b>UNBC</b>	1,970,619.00		3,385,936.00
<b>UVIC</b>	6,423,457.00	242,935.00	14,863,832.00
<b>VCC</b>	332,788.15	13,851.06	2,568,715.21
<b>VIU</b>	785,327.13	79,287.40	2,533,785.00

8. INSTITUTIONAL BUDGET								
	a	b	a + b = c		a	b	c	d
	Base Grant from Ministry	Other operating Funds	Total Institutional Budget	Campus Name	Total area in square meters	Total number of seats	Total hours open per week	Total reference hours per week
BCIT	131,047,746.00	136,538,536.00	267,586,282.00	Burnaby	1,722.00	826.00	168.00	62.00
CAM	56,551,000.00	41,795,107.00	98,346,107.00	Lansdowne	2,250.00	200.00	73.00	65.00
CAPU	37,577,967.00	46,108,506.00	83,686,473.00	North Vancouver	3,716.00	360.00	74.50	74.50
CNC	27,914,994.00	4,337,000.00	32,251,994.00	Prince George	2,300.00	257.00	70.00	35.00
COTR	17,017,357.00	8,022,932.00	25,040,289.00	Cranbrook	1,016.00	86.00	67.00	40.00
DOUG	54,384,801.00	42,925,027.00	97,309,828.00	New Westminster	4,906.50	418.00	69.00	69.00
ECUAD	13,390,464.00	10,345,292.00	23,735,756.00	Emily Carr University Library	992.00	95.00	78.00	78.00
JI	8,989,627.00	39,494,816.00	48,484,443.00	New Westminster	654.00	69.00	52.00	52.00
KPU	72,565,175.00	63,826,902.00	136,392,077.00	LANGLEY	1,190.00	193.00	68.25	62.00
LC	44,188,000.00	3,498,000.00	47,686,000.00	Langara	4,743.00	563.00	69.00	69.00
NI	24,703,087.00	4,136,123.00	28,839,210.00	Comox Valley	495.00	112.00	60.00	60.00
NL	20,899,525.00	9,430,151.00	30,329,676.00	Dawson Creek	400.00	37.00	60.00	35.00
NW	21,661,240.00	9,809,136.00	31,470,376.00	Terrace	903.00	80.00	69.00	42.00

8. INSTITUTIONAL BUDGET								
	a	b	a + b = c		a	b	c	d
	Base Grant from Ministry	Other operating Funds	Total Institutional Budget	Campus Name	Total area in square meters	Total number of seats	Total hours open per week	Total reference hours per week
OC	52,855,253.00	29,980,092.00	82,835,345.00	Kelowna	2,375.00	300.00	82.00	61.00
QUC				Quest University Canada	855.00	136.00	72.50	58.50
RR	16,757,000.00	35,427,000.00	52,184,000.00	Royal Roads	1,900.00	160.00	81.50	62.00
SEL	25,175,381.00	10,649,925.00	35,825,306.00	Castlegar	1,250.00	124.00	59.50	49.00
SFU	231,000,000.00	382,692,000.00	613,692,000.00	Burnaby	16,503.00	1,157.00	99.00	86.00
TRU	78,009,721.00	80,734,460.00	158,744,181.00	Kamloops	2,903.00	209.00	110.00	81.00
TWU				Norma Marion Alloway Library	3,344.50	338.00	83.00	80.00
UBC	556,178,466.00	274,000,000.00	830,178,466.00	UBC Vancouver	38,615.00	4,548.00	996.00	854.50
UFV	54,802,441.00	53,405,970.00	108,208,411.00	Abbotsford	3,149.00	250.00	80.00	67.00
UNBC	45,067,000.00	20,006,000.00	65,073,000.00	Geoffrey R. Weller Library	4,248.70	466.00	92.00	46.00
UVIC	185,378,000.00	105,174,000.00	290,552,000.00	Main	30,687.18	2,098.00	99.50	80.00
VCC	53,656,337.00	36,162,918.00	89,819,255.00	Broadway Campus	1,659.77	207.00	56.00	51.00
VIU	59,151,319.00	61,386,257.00	120,537,576.00	Nanaimo	6,812.00	731.00	100.00	75.00

9. FACILITIES AND HOURS: For each staffed Library										
		a	b	c	d		a	b	c	d
	Campus Name	Total area in square meters	Total number of seats	Total hours open per week	Total reference hours per week	Campus Name	Total area in square meters	Total number of seats	Total hours open per week	Total reference hours per week
<b>BCIT</b>	ATC	257.90	86.00	57.50	7.00	BMC	232.00	53.00	40.00	7.00
<b>CAM</b>	Interurban	1,139.00	156.00	54.00	25.00					
<b>CAPU</b>	Sunshine Coast	98.90	30.00	47.50		Squamish	11.90	6.00	47.50	
<b>CNC</b>										
<b>COTR</b>										
<b>DOUG</b>	David Lam	1,916.00	356.00	69.00	69.00					
<b>ECUAD</b>										
<b>JI</b>										
<b>KPU</b>	RICHMOND	1,700.00	210.00	85.50	66.00	SURREY	6,920.00	522.00	85.50	66.00
<b>LC</b>										
<b>NI</b>	Campbell River	305.00	69.00	48.00	48.00	Port Alberni	198.00	53.00	48.00	48.00
<b>NL</b>	Fort St. John	350.00	49.00	60.00	35.00					
<b>NW</b>	Prince Rupert	389.00	59.00	56.00	56.00	Smithers	50.00	10.00	20.00	20.00



9. FACILITIES AND HOURS: For each staffed Library										
		a	b	c	d		a	b	c	d
	Campus Name	Total area in square meters	Total number of seats	Total hours open per week	Total reference hours per week	Campus Name	Total area in square meters	Total number of seats	Total hours open per week	Total reference hours per week
<b>OC</b>	Penticton	416.00	78.00	74.25	20.00	Salmon Arm	383.00	70.00	72.00	20.00
<b>QUC</b>										
<b>RR</b>										
<b>SEL</b>	Silver King	155.00	15.00	20.00	-	Tenth St	40.00	4.00	20.00	-
<b>SFU</b>	Vancouver	765.00	156.00	76.00	66.00	Surrey	2,137.00	250.00	69.00	54.50
<b>TRU</b>	Williams Lake	172.00	70.00	58.00	30.00					
<b>TWU</b>										
<b>UBC</b>	UBC Okanagan	2,756.00	450.00	100.50	74.50					
<b>UFV</b>	Chilliwack	315.00	30.00	66.50	60.50	Mission	71.00	14.00	22.00	22.00
<b>UNBC</b>										
<b>UVIC</b>										
<b>VCC</b>	Downtown Campus	910.19	104.00	59.00	59.00					
<b>VIU</b>	Cowichan	305.00	87.00	64.00	64.00	Powell River	161.00	20.00	25.00	25.00

		a	b	c	d	e	f	g	h
	Campus Name	Total area in square meters	Total number of seats	Total hours open per week	Total reference hours per week	Total square meters all campuses	Total seats all campuses	Total open hours per week all campuses	Total reference hours per week all campuses
<b>BCIT</b>						2,211.90	965.00	265.50	76.00
<b>CAM</b>						3,389.00	356.00	127.00	90.00
<b>CAPU</b>						3,826.80	396.00	169.50	74.50
<b>CNC</b>						2,300.00	257.00	70.00	35.00
<b>COTR</b>						1,016.00	86.00	67.00	40.00
<b>DOUG</b>						6,822.50	774.00	138.00	138.00
<b>ECUAD</b>						992.00	95.00	78.00	78.00
<b>JI</b>						654.00	69.00	52.00	52.00
<b>KPU</b>	CLOVERDALE	546.00	86.00	60.00	16.00	10,356.00	1,011.00	299.25	210.00
<b>LC</b>						4,743.00	563.00	69.00	69.00
<b>NI</b>	Port Hardy	308.00	19.00	17.50	5.50	1,306.00	253.00	173.50	161.50
<b>NL</b>						750.00	86.00	120.00	70.00
<b>NW</b>						1,342.00	149.00	145.00	118.00

		a	b	c	d	e	f	g	h
	Campus Name	Total area in square meters	Total number of seats	Total hours open per week	Total reference hours per week	Total square meters all campuses	Total seats all campuses	Total open hours per week all campuses	Total reference hours per week all campuses
<b>OC</b>	Vernon	648.00	96.00	74.50	23.00	3,822.00	544.00	302.75	124.00
<b>QUC</b>						855.00	136.00	72.50	58.50
<b>RR</b>						1,900.00	160.00	81.50	62.00
<b>SEL</b>						1,445.00	143.00	99.50	49.00
<b>SFU</b>						19,405.00	1,563.00	244.00	206.50
<b>TRU</b>						3,075.00	279.00	168.00	111.00
<b>TWU</b>						3,344.50	338.00	83.00	80.00
<b>UBC</b>						41,371.00	4,998.00	1,096.50	929.00
<b>UFV</b>						3,535.00	294.00	168.50	149.50
<b>UNBC</b>						4,248.70	466.00	92.00	46.00
<b>UVIC</b>						30,687.18	2,098.00	99.50	80.00
<b>VCC</b>						2,569.96	311.00	115.00	110.00
<b>VIU</b>						7,278.00	838.00	189.00	164.00

	10. COMPUTING INFRASTRUCTURE						
	a	b	c	d	e	f	
	No. of public workstations	Wireless available	No. of laptops available	No. of laptops circulated	No. of laptop ports	Other Mobile devices	If yes, please clarify
<b>BCIT</b>	116	Yes	24	1,920	170	Yes	LCD Projectors
<b>CAM</b>	60	Yes			25		
<b>CAPU</b>	70	Yes	21	2,841			
<b>CNC</b>	43	Yes			8	Yes	Like COTR
<b>COTR</b>	54	Yes	12	439	0	Yes	CD players/recorders;clickers;digital cameras; digital video cameras; DVD players; DRAGON; LCD projectors; microphones; overhead projectors; slide projectors; ROVER; sound systems; TV/VCR/DVD players
<b>DOUG</b>	150	Yes	42	1,872		Yes	Cameras, camcorders, LCD projectors, e-readers, CD players
<b>ECUAD</b>	18	Yes					
<b>JI</b>	23	Yes	6	70	7	No	
<b>KPU</b>	161	Yes	31	3,118	0	Yes	35 mm cameras, digital cameras, camcorders, light sets. Tripods, computers on wheels, data projectors, slide projectors, video projectors, USB drives, TV/VCR/DVD units, DVD players, blaster, CD players, cassette recorders, walkmans, PA system.
<b>LC</b>	110	Yes		N/A	N/A	Yes	Wireless Internet with Innovatives's AirPac product allows any wireless device with browser capability to access the OPAC
<b>NI</b>	46	Yes					
<b>NL</b>	25	Yes	8	20	15	0	
<b>NW</b>	30	Yes	2	2			

	10. COMPUTING INFRASTRUCTURE						
	a	b	c	d	e	f	
	No. of public workstations	Wireless available	No. of laptops available	No. of laptops circulated	No. of laptop ports	Other Mobile devices	If yes, please clarify
<b>OC</b>	152	Yes	35	3,831		No	
<b>QUC</b>	9	Yes			80	Yes	digital cameras, camcorders
<b>RR</b>	46	Yes	No	0	19	No	
<b>SEL</b>	26	No				Yes	portable dvd players
<b>SFU</b>	391	Yes	73		45	No	
<b>TRU</b>	43	Yes	4	197	11	No	
<b>TWU</b>	26	Yes	N/A	N/A	14	N/A	
<b>UBC</b>	599	Yes	56	11,781	158	Yes	Nintendo DS
<b>UFV</b>	44	Yes		0	0	No	
<b>UNBC</b>	115	Yes		0	101		
<b>UVIC</b>	158	Yes	112	14,354	300	No	
<b>VCC</b>	59	Yes		N/A	0	Yes	Anything that uses wireless
<b>VIU</b>	129	Yes	8	215	62		

11. LIBRARY AUTOMATED SYSTEM							
	Cataloguing	Primary source of bibliographic records	Secondary source of bibliographic records	OPAC	Periodicals Check In	Acquisitions	Interlibrary Loans
<b>BCIT</b>	Innovative	OCLC/LC	OCLC/LC	Innovative			Innovative Innopac (Borrowing module)
<b>CAM</b>	SirsiDynix Symphony	Agent, Amicus	Other z39.50 sites	SirsiDynix Symphony	SirsiDynix Symphony	SirsiDynix Symphony	Ariel/Outlook
<b>CAPU</b>	Innovative Interfacing Inc.	AG Canada	LC, AEMAC	Innopac	Innovative	Innovative	Ariel/Outlook
<b>CNC</b>	SIRSIDYNIX	LC	Amicus	Sirsi Webcat			Ariel, Outlook, e-Mail
<b>COTR</b>	SITKA Evergreen	Z39.50	original	SITKA Evergreen	Evergreen	manual	Outlook/Ariel/GOD OT/email
<b>DOUG</b>	Innovative	OCLC, AG Canada, Amicus	other Z39.50 sites	Innovative	Innovative	Innovative	Ariel/Outlook
<b>ECUAD</b>	Horizon SirsiDynix	BookWhere	Book Vendors	Horizon	Horizon	Horizon	Ariel & Email
<b>JI</b>	SIRSIDYNIX	OCLC	AMICUS	SIRSIDYNIX	SIRSIDYNIX	SIRSIDYNIX	Ariel, Outlook, e-Mail
<b>KPU</b>	SIRSI-DYNIX	LAC, LC, OUTLOOK	OCLC	SIRSI-DYNIX	SIRSI-DYNIX	SIRSI-DYNIX	RELAIS
<b>LC</b>	Innovative Interfaces Inc (III) - Millennium	Bookwhere	Z39.50 libraries	III - Millennium	III - Millennium	III - Millennium	Ariel - Outlook
<b>NI</b>	Sirsi/Dynix	LC/Amicus/SFU		Sirsi/Dynix		Sirsi/Dynix	Outlook
<b>NL</b>	SIRSI	OUTLOOK	AMICUS	SIRSI WEBCAT	SIRSI SYMPHONY	SIRSI SYMPHONY	OUTLOOK
<b>NW</b>	Sirsi Unicorn	Outlook	Amicus	Sirsi WebCat	Sirsi	Sirsi	Manual/Outlook

11. LIBRARY AUTOMATED SYSTEM							
	Cataloguing	Primary source of bibliographic records	Secondary source of bibliographic records	OPAC	Periodicals Check In	Acquisitions	Interlibrary Loans
<b>OC</b>	Voyager (Ex Libris)	Blackwell	OCLC	Voyager (Ex Libris)	Voyager (Ex Libris)	Voyager (Ex Libris)	GODOT / Outlook / Ariel
<b>QUC</b>	Voyager (Endeavor)	Library of Congress	Library & Archives Canada	Voyager (Endeavor)	Voyager (Endeavor)	Voyager (Endeavor)	manual
<b>RR</b>	Voyager (Endeavor)	bna	Library of Congress	Voyager (Endeavor)	Voyager (Endeavor)	Voyager (Endeavor)	Open ILL
<b>SEL</b>	SirsiDynix	LC/Outlook/NLC	other Z39.50 sites	Sirsi	Sirsi	Sirsi	Outlook/Ariel
<b>SFU</b>	Innovative Interfaces, Inc. (III)	Blackwell's North America	OCLC and AG Canada	III Millennium	III Java Millennium	III Java Millennium	Relais
<b>TRU</b>	Sirsi/Unicorn	Blackwell North America	Amicus	Sirsi/Unicorn	Sirsi/Unicorn	Sirsi/Unicorn	Open ILL
<b>TWU</b>	SirsiDynix Horizon	OCLC	Amicus	Horizon	N/A	Horizon	Relais
<b>UBC</b>	Voyager/ExLibris	LC	OCLC	Voyager	Voyager	Voyager	Relais
<b>UFV</b>	SirsiDynix (Symphony)	OCLC, LC, Amicus		SirsiDynix	SirsiDynix	SirsiDynix	Open ILL, Ariel, Godot, Outlook, Amicus
<b>UNBC</b>	Innovative Millennium	OCLC	NLC	Innovative Millennium	Innovative Millennium	Innovative Millennium	Relais
<b>UVIC</b>	Voyager/ExLibris	OCLC; Vendor records; Z39.50 databases		Voyager/ExLibris	Voyager/ExLibris	Voyager/ExLibris	OCLC; Relais
<b>VCC</b>	VTLS Virtua	B&T	BOOKWHERE	VTLS	VTLS	VTLS	VARIOUS
<b>VIU</b>	SIRSI	BIBLIOFILE/AMICUS	BOOKWHERE	SIRSI	SIRSI	SIRSI	RELAIS

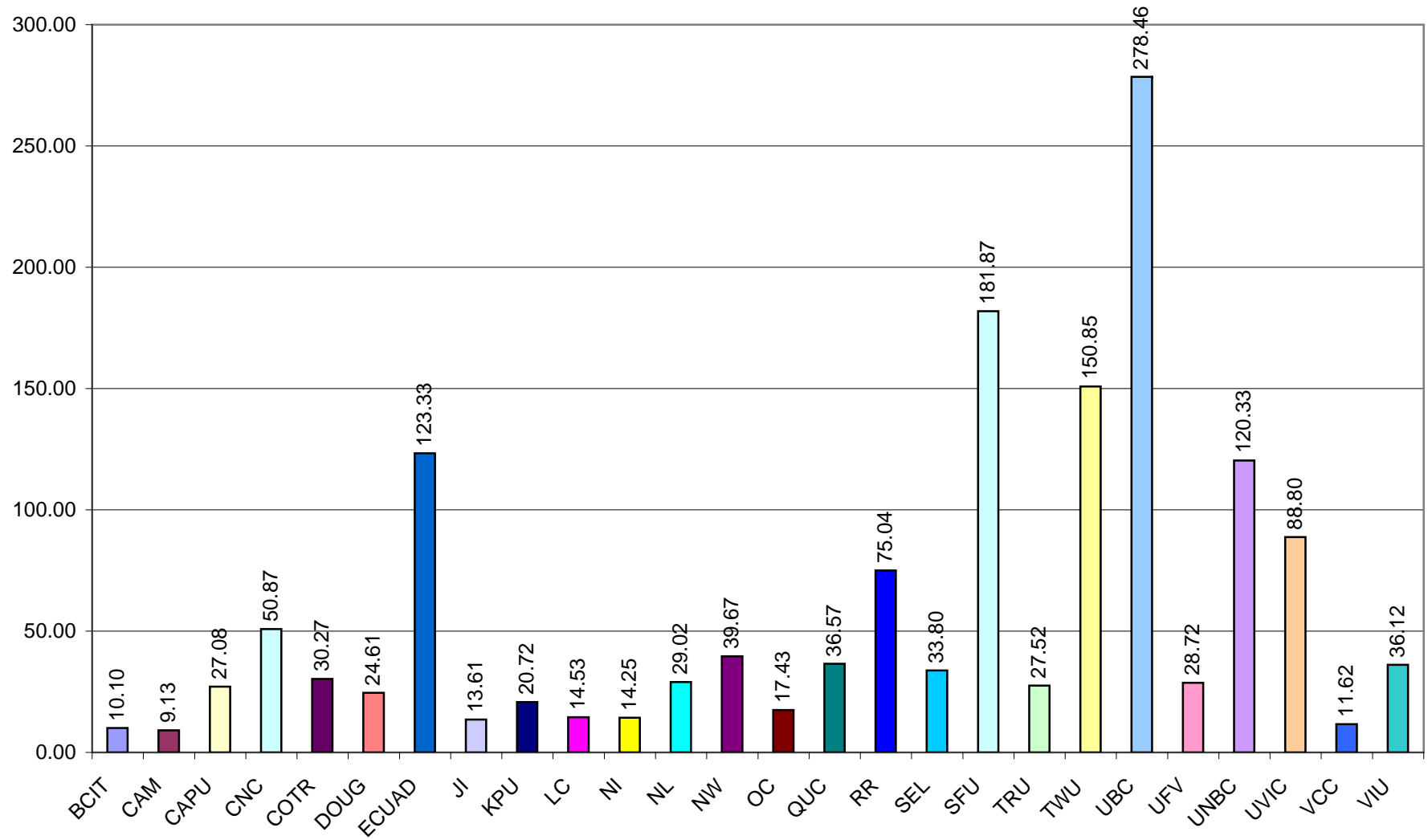
	a) Volumes/FTE Student: 5(f)/3(f)	b) Subscriptions/FTE Student: 5(g)/3(f)	c) Collection Expenditures/FTE Student: 7(i)/3(f)	d) Library Expenditures/FTE Student: 7(i)/3(f)	e) Collection Expenditures as % of Library Expenditures: 7(i)/7(i)	f) Periodicals as % of Library Expenditures: 7(d)/7(i)	g) Electronic Services as % of Library Expenditures: 7(i)/7(i)	h) Library Expenditures as % of Institutional Budget: 7(i)/8(c)	i) FTE Students/FTE Library Personnel: 3(f)/4(f)	j) Direct Circulation/FTE Student: 6(d)/3(f)	k) Direct Circulation/Total Volumes: 6(d)/5(f)	l) Total Library Expenditure/Circulation: 7(i)/6(d)	m) Reference Transactions/FTE Student: 6a(iii)/3(f)	n) Number of Students Instructed/FTE Students: 6(b)/3(f)	o) Total Library Area/FTE Students: 9(e) total /3(f)	p) Number of Seats/FTE Student: 9(f) total /3(f)	q) Hours Open/FTE Personnel: 9(g) total /4(f)	r) Reference Hours/Total Open Hours: 9(h) total /9(g)
Library	Ratios																	
BCIT	10.10	0.02	35.55	165.56	21.47%	3.83%	12.53%	1.15%	559.77	3.43	0.34	48.30	0.72	0.19	0.12	0.05	7.97	0.29
CAM	9.13	0.03	28.42	177.60	16.00%	2.90%	6.47%	1.76%	540.53	5.05	0.55	35.15	1.27	0.59	0.35	0.04	7.04	0.71
CAPU	27.08	0.07	51.31	252.27	20.34%	6.02%	7.55%	1.62%	287.89	7.52	0.28	33.56	1.19	0.82	0.71	0.07	9.10	0.44
CNC	50.87	0.09	50.54	265.37	19.05%	5.49%	5.34%	3.17%	315.61	6.91	0.14	38.41	3.29	0.50	0.60	0.07	5.74	0.50
GOTR	30.27	0.03	28.24	159.89	17.66%	0.60%	7.33%	1.57%	454.21	3.67	0.12	43.52	5.23	0.22	0.41	0.03	12.35	0.60
DOUG	24.61	0.11	67.77	381.59	17.76%	3.43%	6.06%	3.02%	199.59	24.29	0.99	15.71	3.42	1.10	0.89	0.10	3.58	1.00
ECUAD	123.33	0.12	99.46	576.98	17.24%	2.56%	7.26%	3.70%	135.72	29.46	0.24	19.59	3.29	0.28	0.65	0.06	6.95	1.00
JI	13.61	0.07	70.53	280.45	25.15%	5.52%	10.68%	1.42%	339.86	2.74	0.20	102.54	1.43	0.17	0.27	0.03	7.22	1.00
KPU	20.72	0.09	90.70	437.41	20.74%	3.26%	7.08%	3.17%	189.45	6.13	0.30	71.36	4.05	0.74	1.05	0.10	5.73	0.70
LC	14.53	0.04	39.89	324.79	12.28%	1.99%	5.38%	4.85%	249.58	9.51	0.65	34.16	1.89	0.76	0.67	0.08	2.42	1.00
NI	14.25	0.12	36.24	228.61	15.85%	3.36%	5.57%	2.00%	240.38	6.19	0.43	36.93	1.62	0.46	0.52	0.10	16.52	0.93
NL	29.02	0.08	53.47	316.01	16.92%	2.19%	8.58%	1.62%	239.49	4.22	0.15	74.80	2.27	0.21	0.48	0.06	18.46	0.58
NW	39.67	0.10	48.00	302.55	15.87%	2.37%	4.15%	2.08%	242.52	5.30	0.13	57.07	0.56	0.41	0.62	0.07	16.29	0.81
OC	17.43	0.08	117.65	352.97	33.33%	4.40%	8.59%	3.45%	245.31	6.95	0.40	50.78	1.96	0.68	0.47	0.07	9.17	0.41
QUC	36.57	0.24	350.94	1145.69	30.63%	2.14%	11.53%	#DIV/0!	63.10	4.14	0.11	276.51	5.44	0.87	3.23	0.51	17.26	0.81
RR	75.04	0.05	234.44	738.02	31.77%	0.80%	25.37%	2.85%	110.02	9.57	0.13	77.11	2.91	0.75	0.94	0.08	4.45	0.76
SEL	33.80	0.15	49.20	299.69	16.42%	5.68%	4.54%	2.16%	293.74	5.84	0.17	51.31	0.67	0.32	0.56	0.06	11.31	0.49
SFU	181.87	0.28	393.81	900.70	43.72%	4.14%	25.49%	3.21%	148.13	26.89	0.15	33.49	7.27	1.22	0.89	0.07	1.65	0.85
TRU	27.52	0.06	124.00	278.89	44.46%	6.80%	27.10%	1.66%	476.10	12.97	0.47	21.50	1.67	0.43	0.33	0.03	8.46	0.66
TWU	150.85	0.36	0.00	0.00	#DIV/0!	#DIV/0!	#DIV/0!	#DIV/0!	142.27	46.32	0.31	0.00	1.98	1.03	1.57	0.16	5.53	0.96
UBC	278.46	2.31	382.69	989.28	38.68%	7.18%	23.95%	5.04%	130.04	52.00	0.19	19.02	4.06	0.81	0.98	0.12	3.37	0.85
UFV	28.72	0.08	134.51	366.33	36.72%	6.68%	18.99%	2.51%	310.96	14.14	0.49	25.91	3.28	0.99	0.48	0.04	7.08	0.89
UNBC	120.33	0.22	655.83	1126.85	58.20%	9.95%	30.36%	5.20%	121.01	13.18	0.11	85.51	1.61	0.62	1.41	0.16	3.71	0.50
UVIC	88.80	0.43	392.18	907.49	43.22%	6.59%	24.27%	5.12%	101.35	22.24	0.25	40.81	4.31	0.41	1.87	0.13	0.62	0.80
VCC	11.62	0.03	43.44	335.30	12.96%	1.22%	3.85%	2.86%	256.73	6.45	0.55	52.02	3.61	0.56	0.34	0.04	3.85	0.96
VIU	36.12	0.05	102.07	329.32	30.99%	2.74%	21.10%	2.10%	271.78	11.65	0.32	28.27	2.52	0.61	0.95	0.11	6.68	0.87



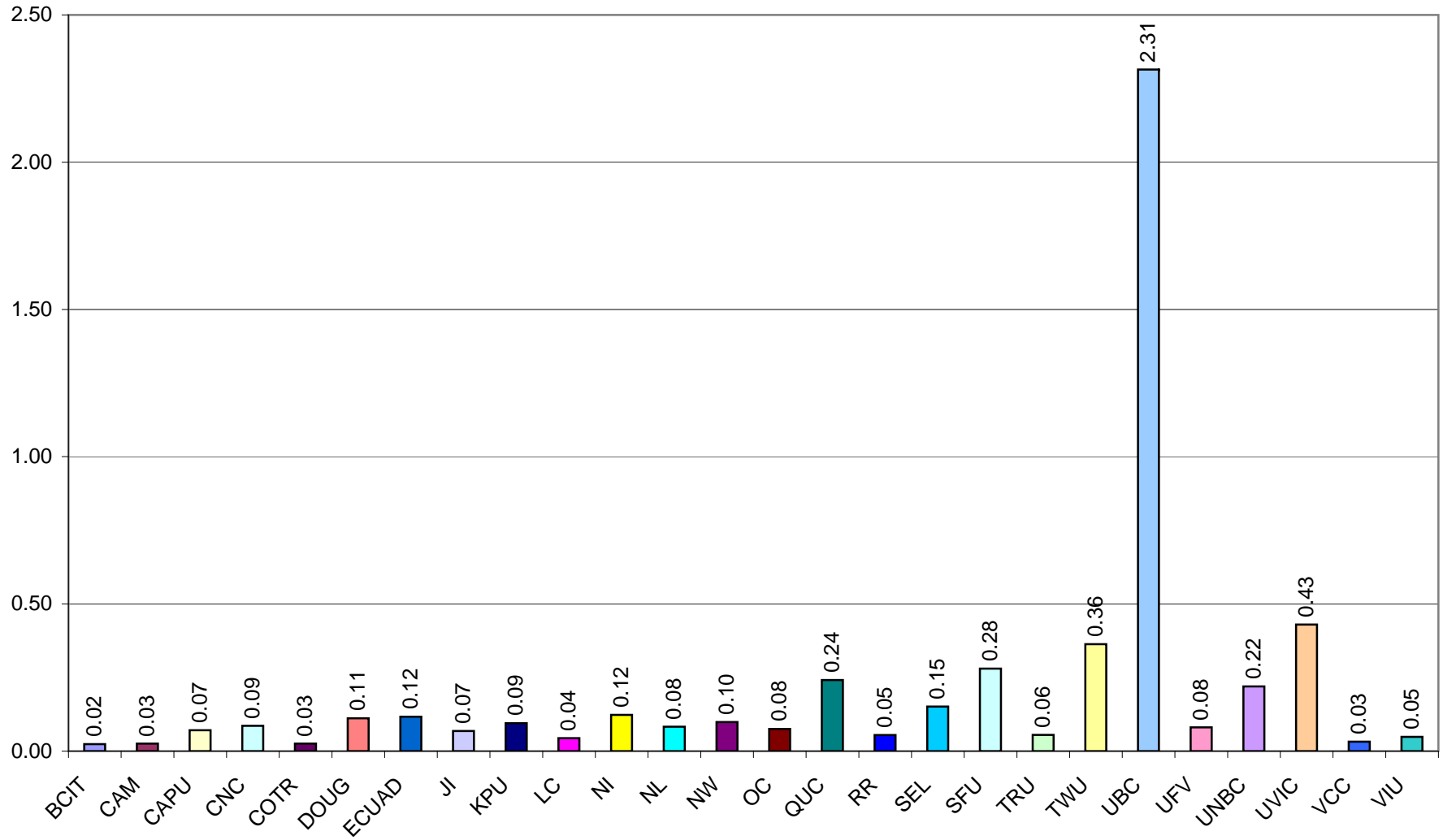
**CPSLD LIBRARY SURVEY 2009-2010  
EXPLANATORY NOTES**

Library	Notes
<b>CAM</b>	Gate not available for 2010 due to renovations
	Periodical back issues is for individual issues, not volumes
	Floor space reduction is temporary due to renovation
<b>ECUAD</b>	The library owns approximately 148,000 slides. Some of the drop in total circulation is due to the increased use of subscription digital image data bases and digital library collections.
<b>Langara</b>	5. Collections, h: Catalogued Electronic Titles <b>**23,575 -includes ebrary collection</b>
<b>NW</b>	6f Gate Count 39,485, the count was just for the Terrace Campus.
<b>OC</b>	9(a) Area reported in previous years was in error; 2009-10 numbers show a decrease in total area over 2008-09 when there was actually an increase in area due to expansion of the Kelowna library.
	9(g) Open hours reported in 2008-09 for Penticton were in error; despite decrease in numbers reported, total open hours did not change from 2008-09 to 2009-10.
<b>SFU</b>	Corrected monograph totals show a decrease in volumes.
<b>TRU</b>	5c, 5d and 5e. Numbers are lower as a result of extensive weeding
<b>UBC</b>	General: All figures include UBC Vancouver and UBC Okanagan
	5.e. Back issues periodicals: includes e-journals, print journals, excludes govpub serials
	5.g. Includes e-journals, print journals, de-duped
	5.h. Catalogued e-titles, excludes digital collections (pages, images)
	6.f. Gate count includes estimate for KBLC-South Wing (1.2 M)
	7.d. Current print periodicals: decrease due to cancellations
<b>UNBC</b>	Gate count is for Oct. 19/09; Back issues of periodicals count in unavailable; in library circulation statistics are not kept
<b>UVic</b>	5a. Previous monograph counts are considered inaccurate, this count is considered accurate. 5d and 5e are unavailable. 7c. is unavailable. 7k. is material fund expenditures not recorded elsewhere. 10b. Wireless is available everywhere in the library, with authentication as a UVic user. 10a. Wireless is available in all areas of the library, given authentication to the UVic system.
<b>VCC</b>	We added the Technical Services area 170.01 sq. meters and the New computer ares 65.18 sq. meters to the DTN Library. Technical
	Services moved to DTN March 23 <sup>rd</sup> , 2009 We added the classroom to the BWY Library

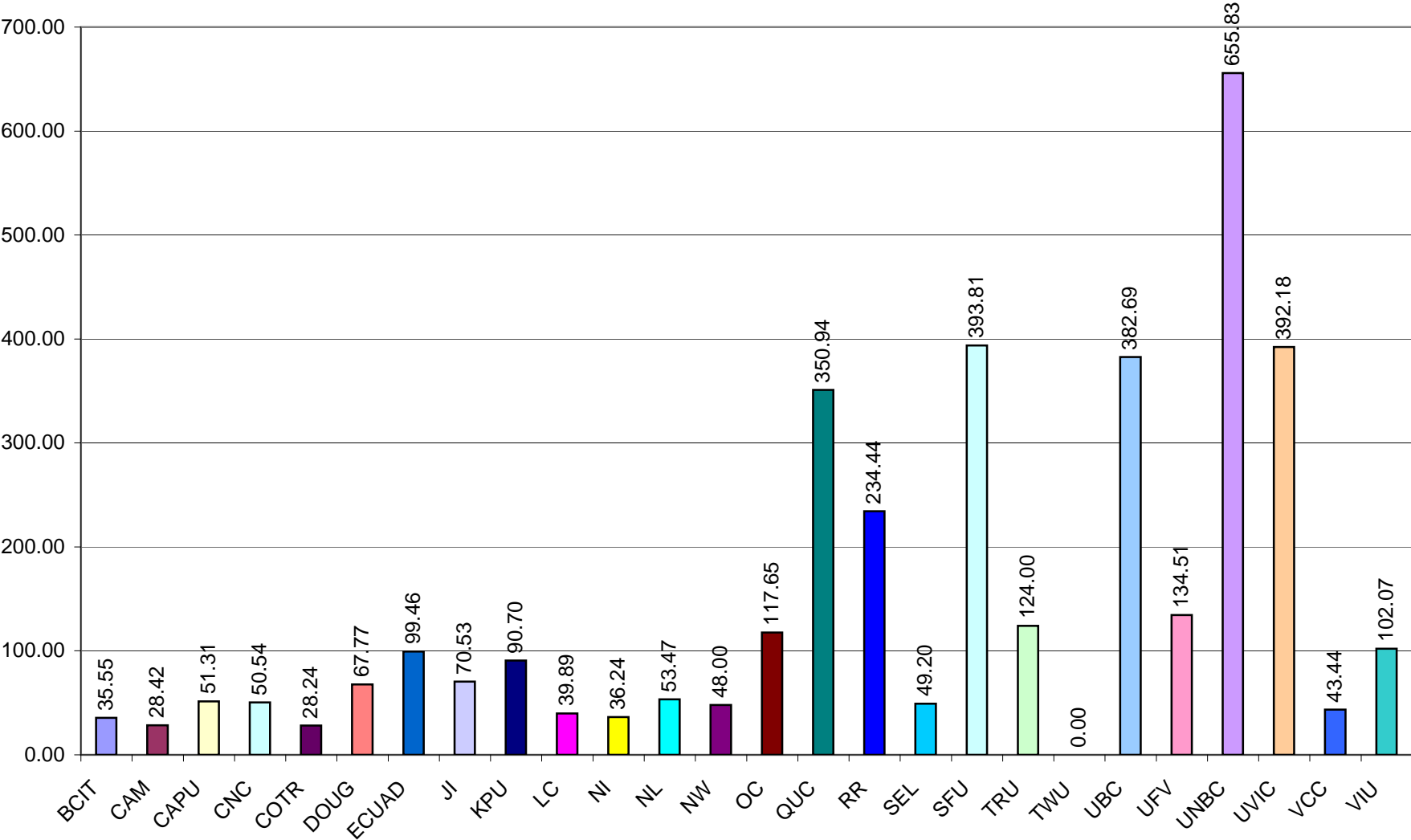
a) Volumes per FTE Student: 5(f)/3(f)



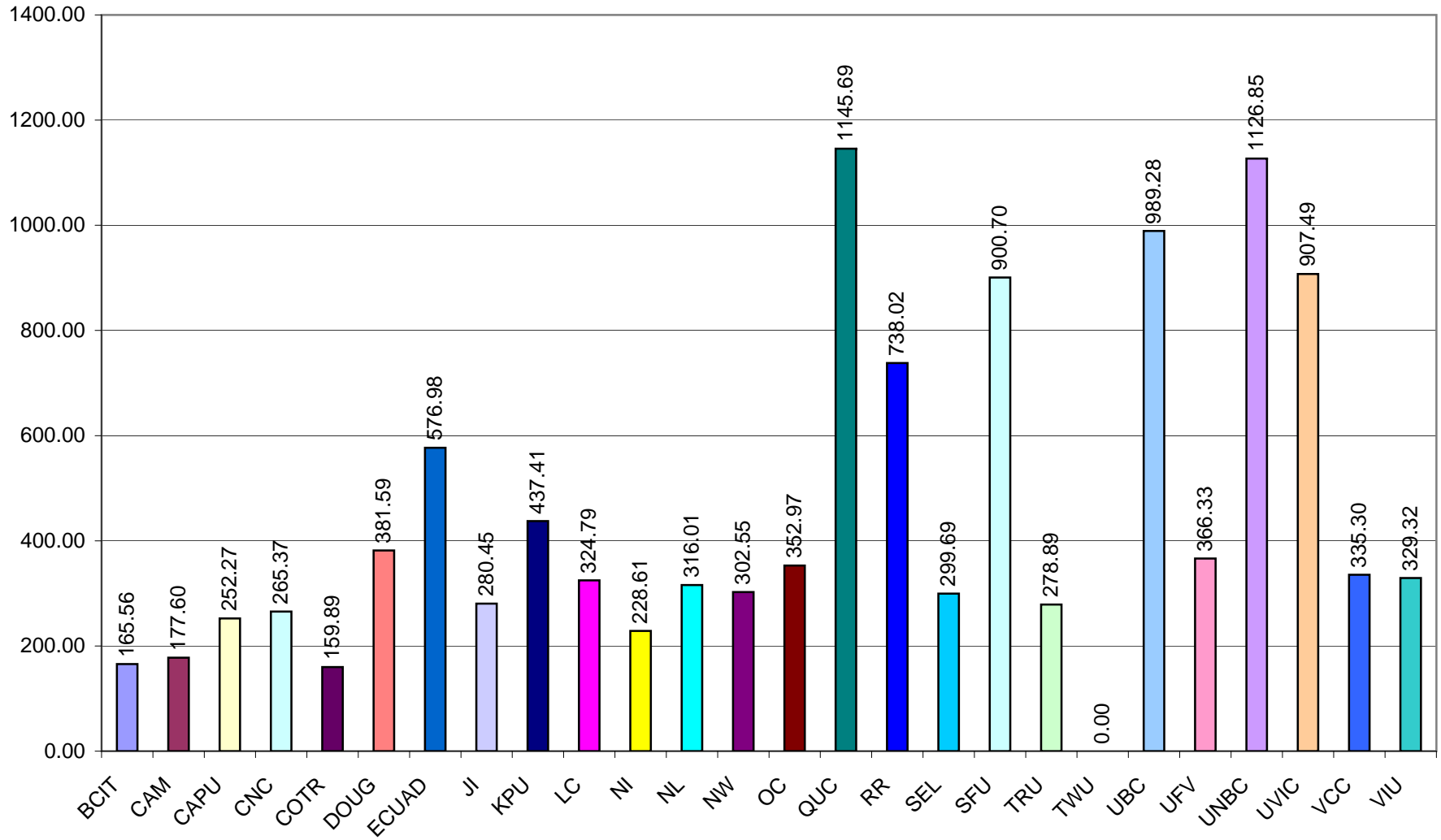
**b) Subscriptions per FTE Student: 5(g)/3(f)**



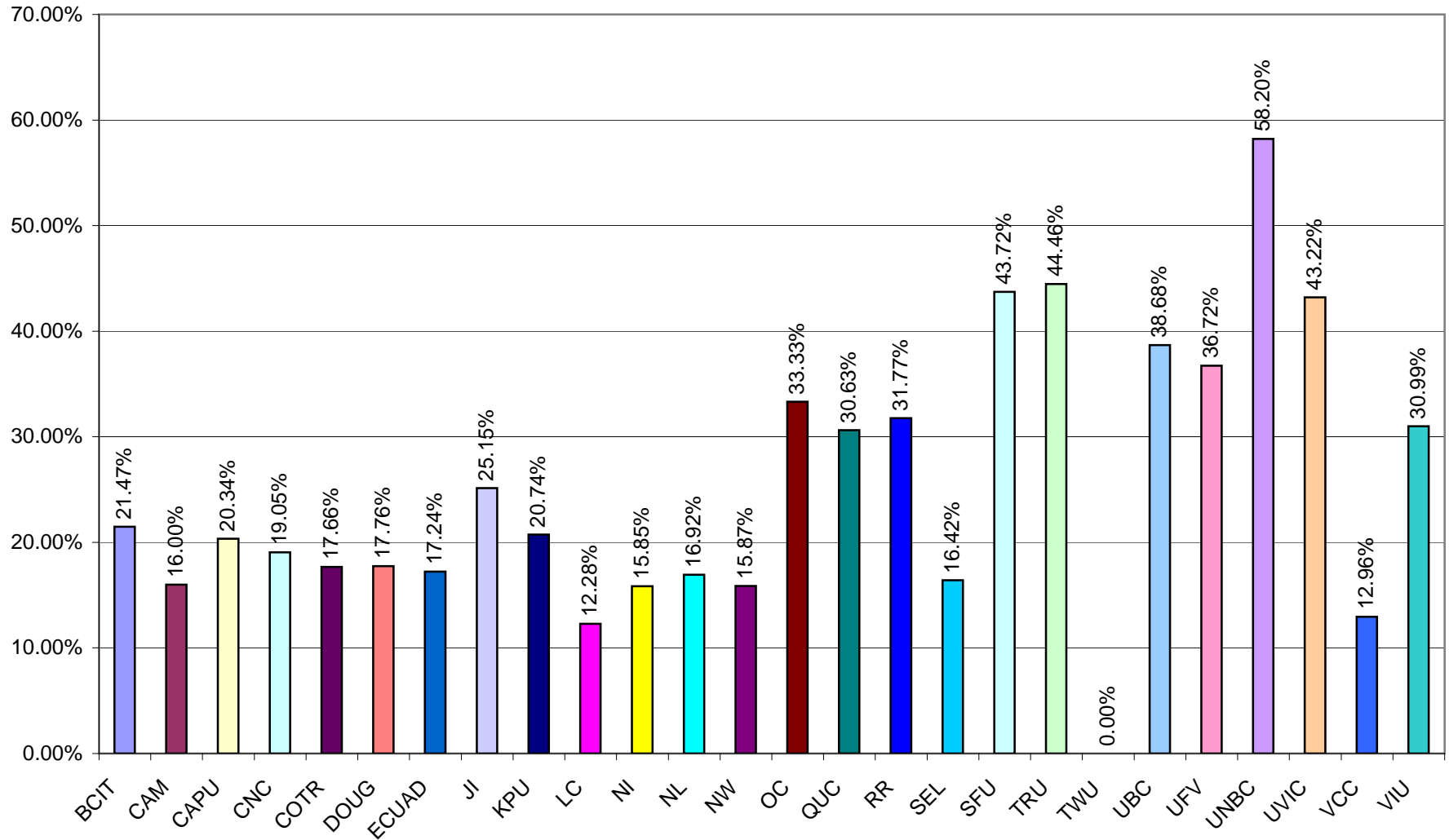
c) Collection Expenditures per FTE Student: 7(j)/3(f)



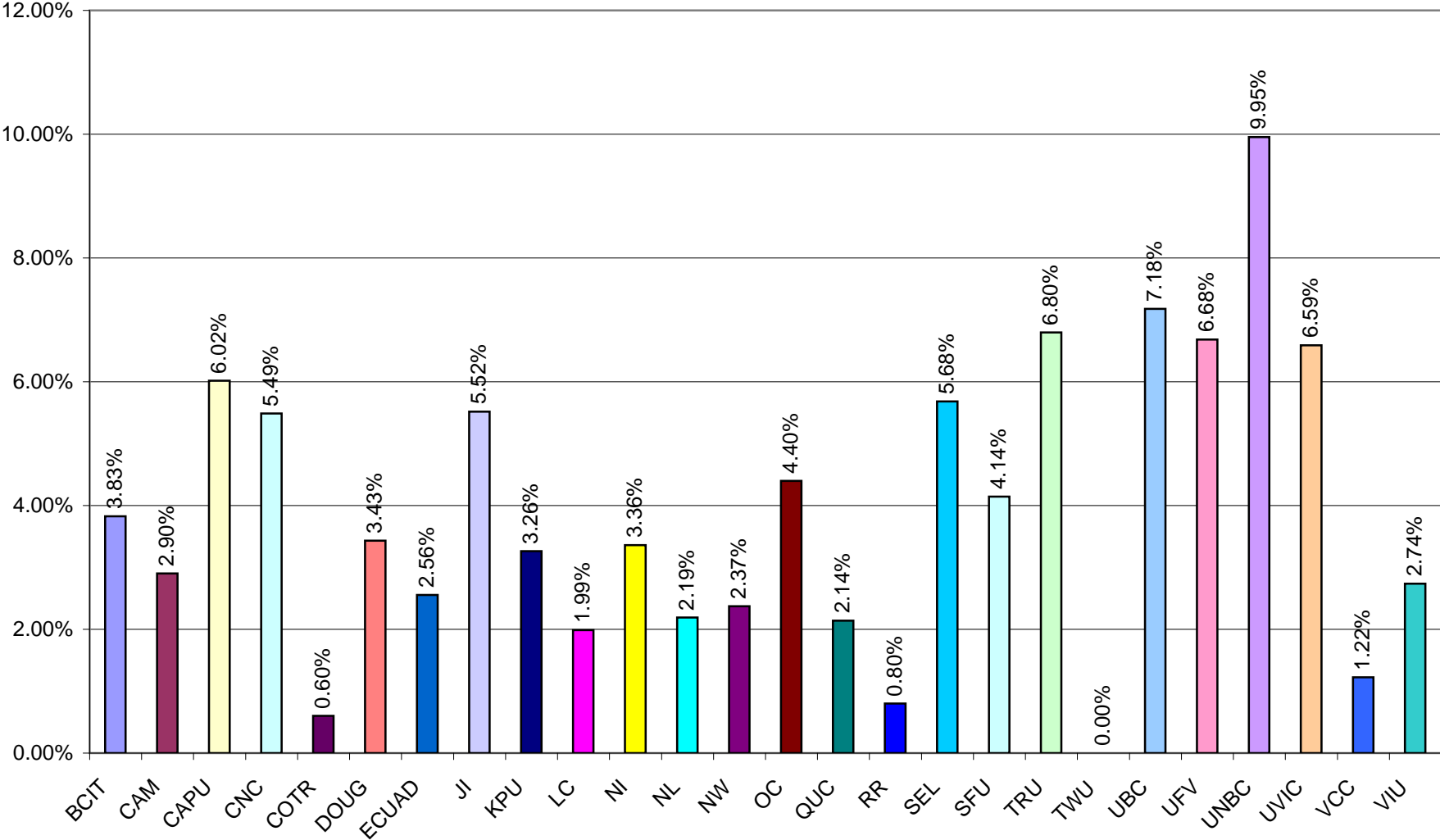
**d) Library Expenditures per FTE Student: 7(l)/3(f)**



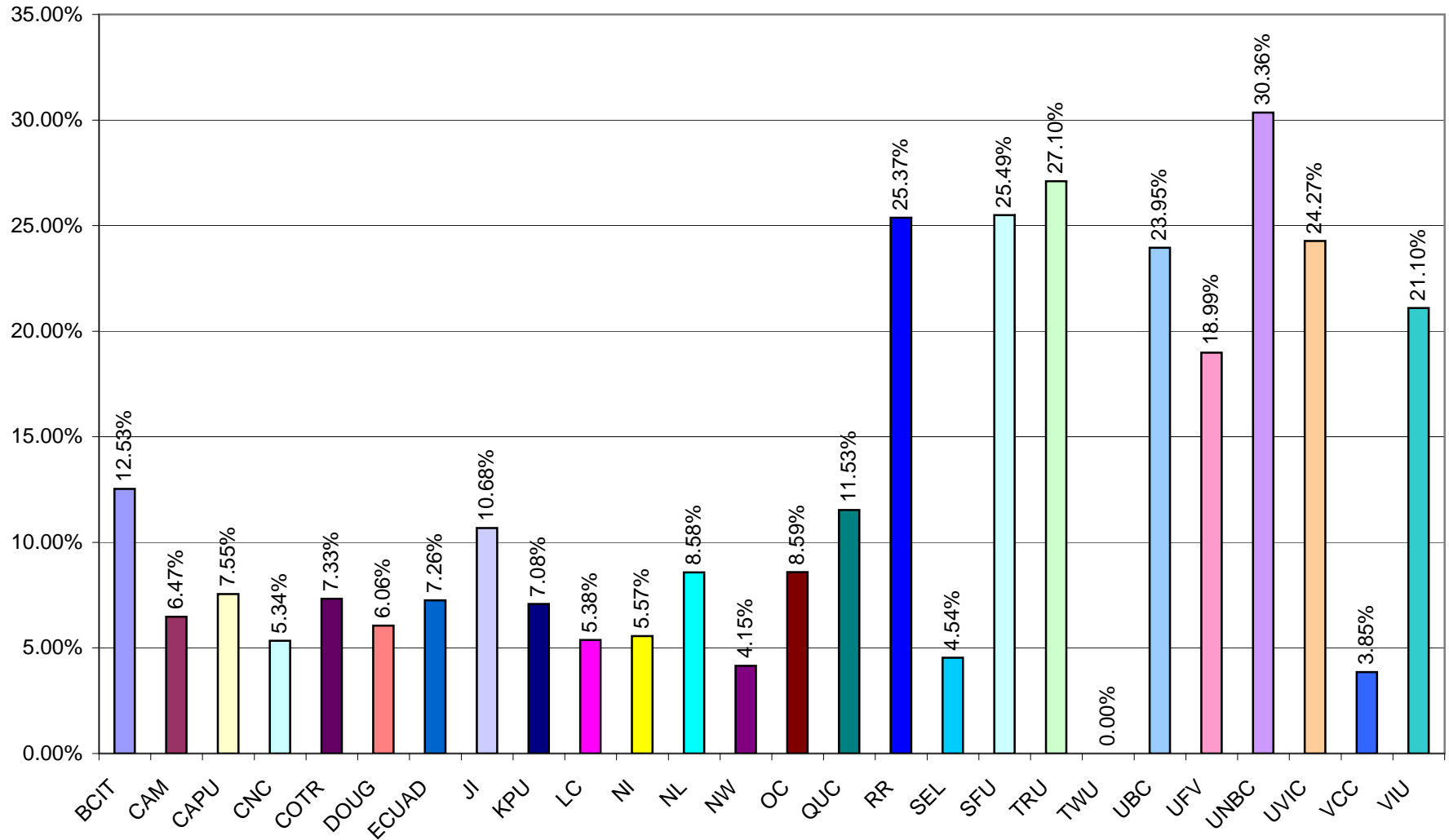
e) Collection Expenditures as % of Library Expenditures: 7(j)/7(l)



**f) Periodicals as % of Library Expenditures: 7(d)/7(l)**

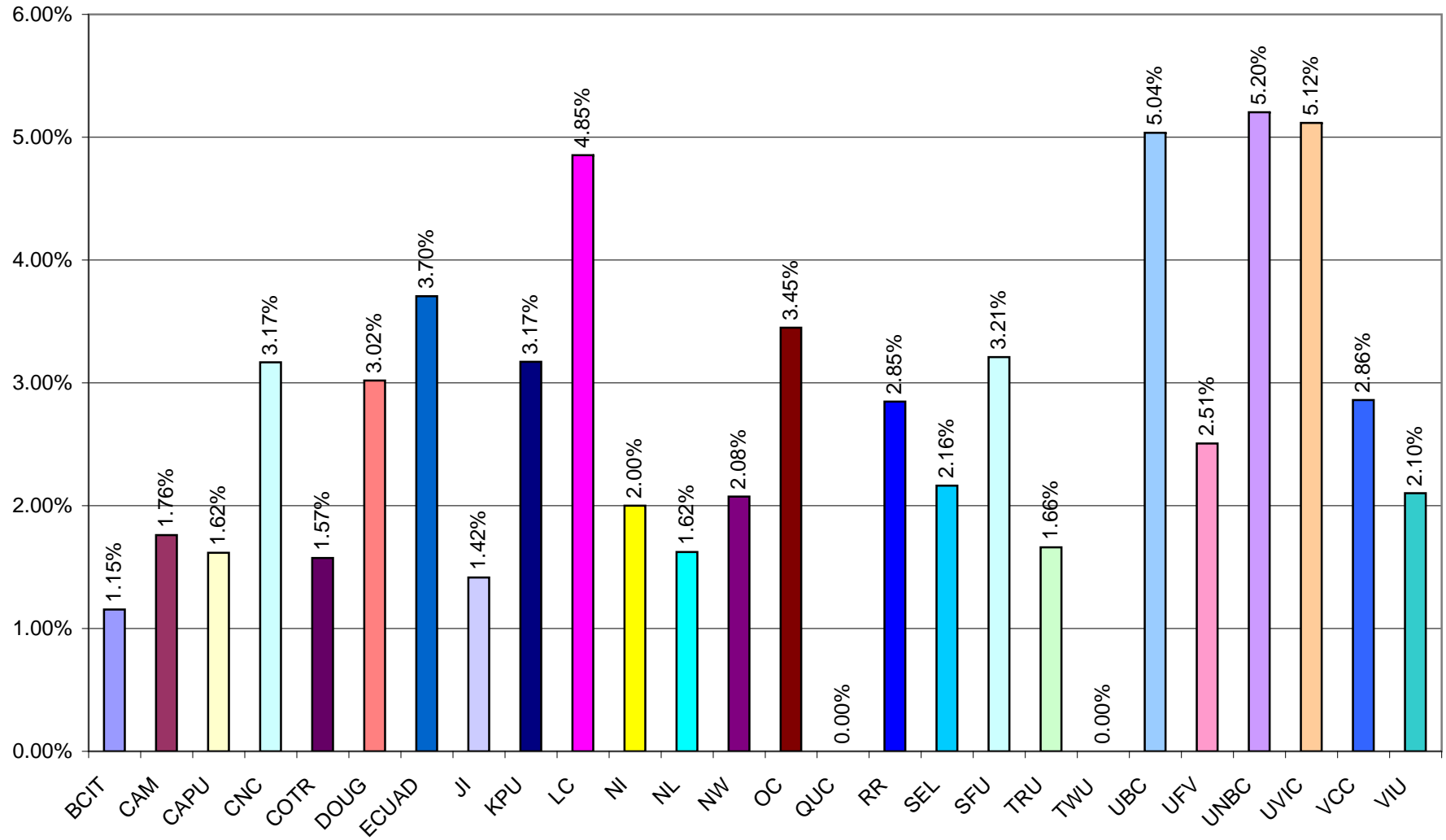


**g) Electronic Services as % of Library Expenditures: 7(i)/7(l)**

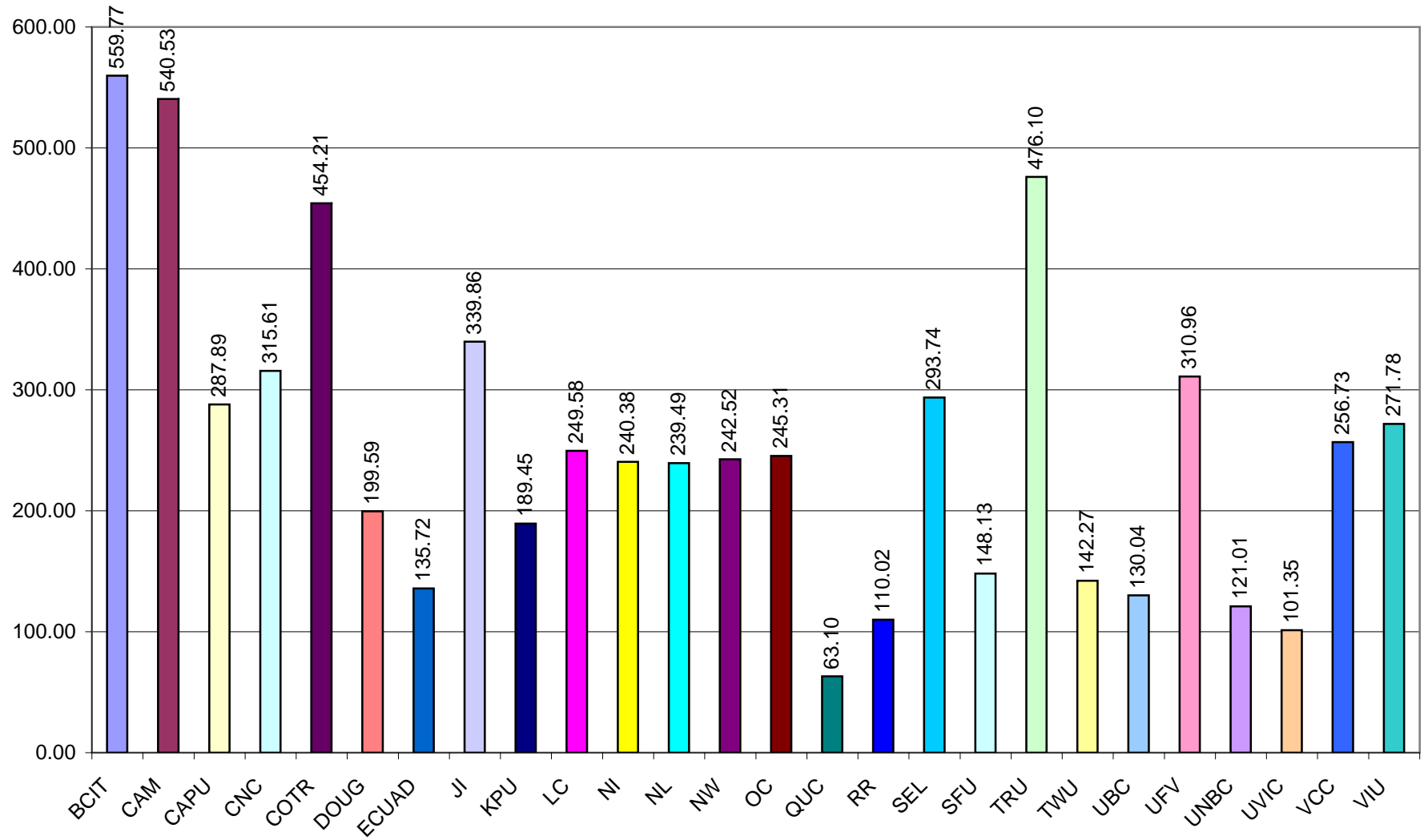




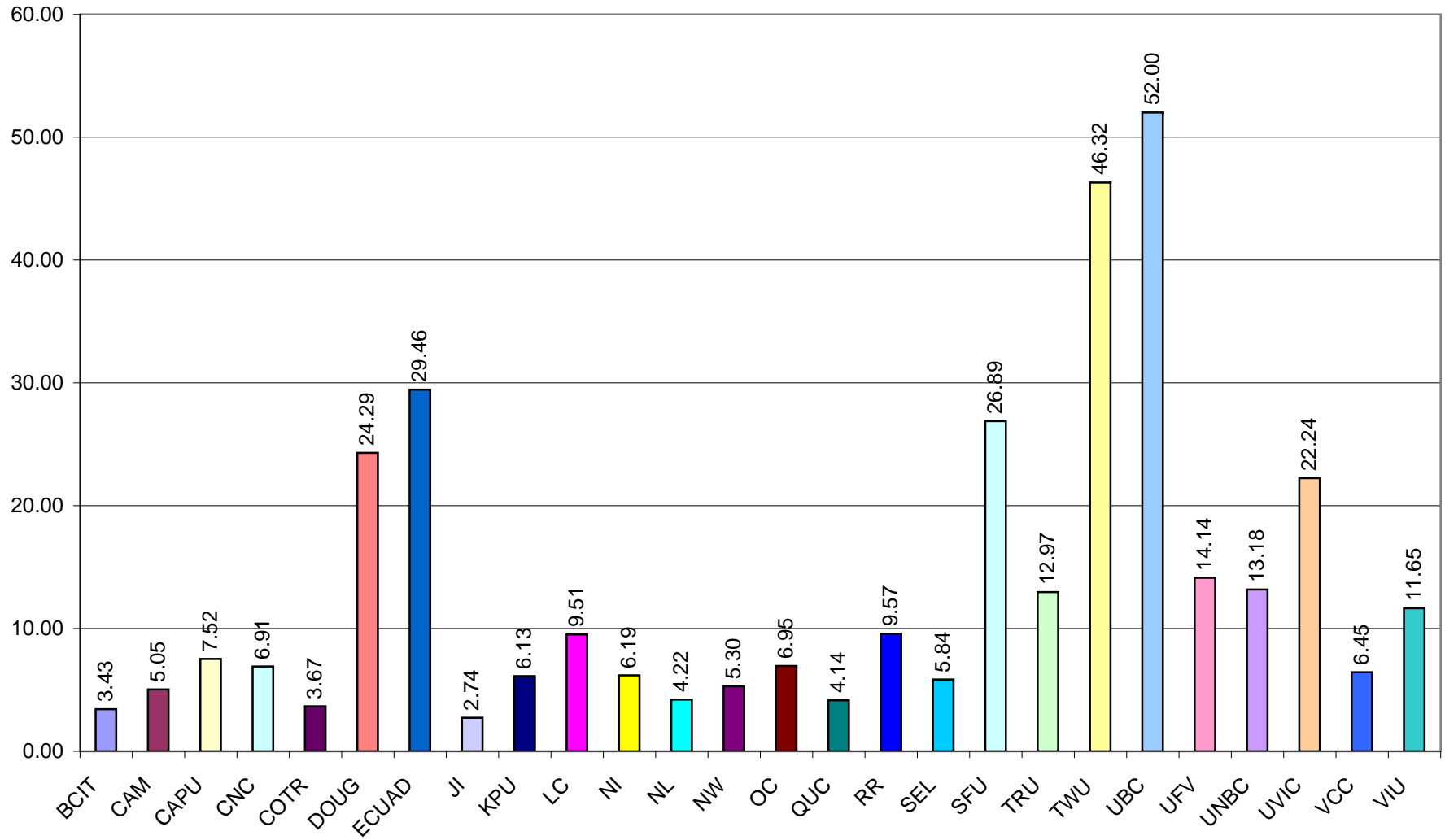
### h) Library Expenditures as % of Institutional Budget: 7(l)/8(c)



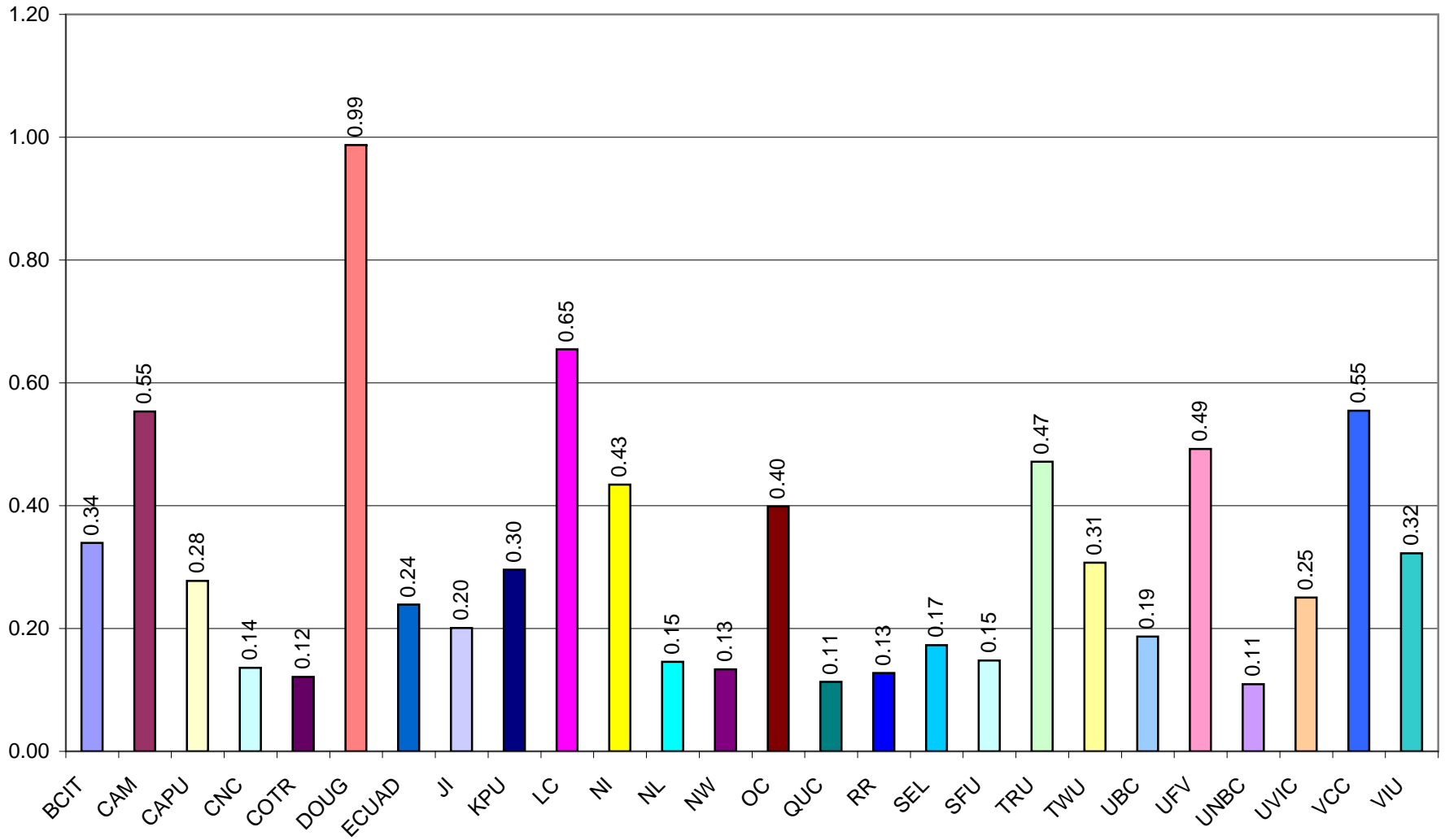
i) FTE Students per FTE Library Personnel: 3(f)/4(f)



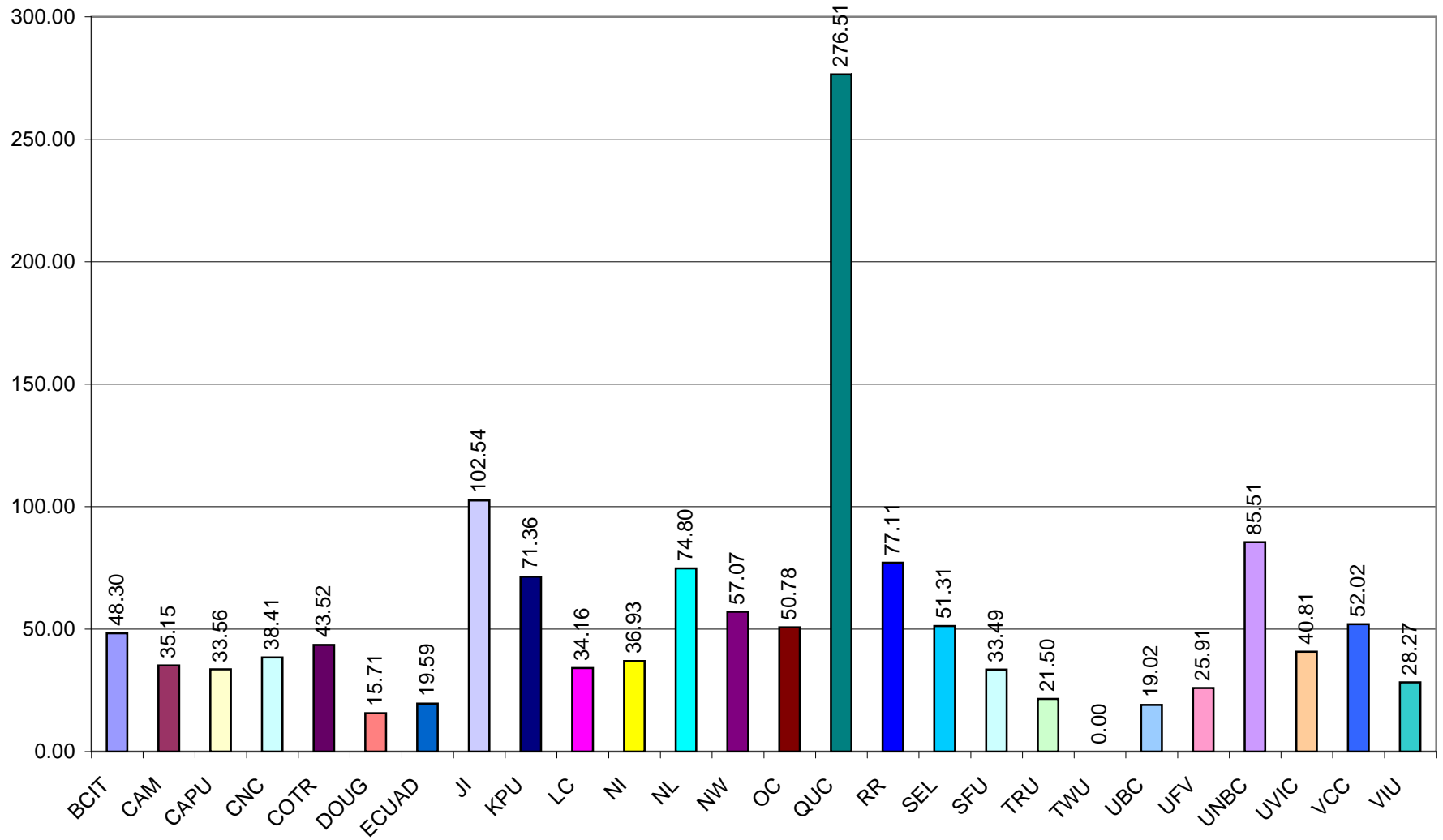
**j) Direct Circulation per FTE Student: 6(d)/3(f)**



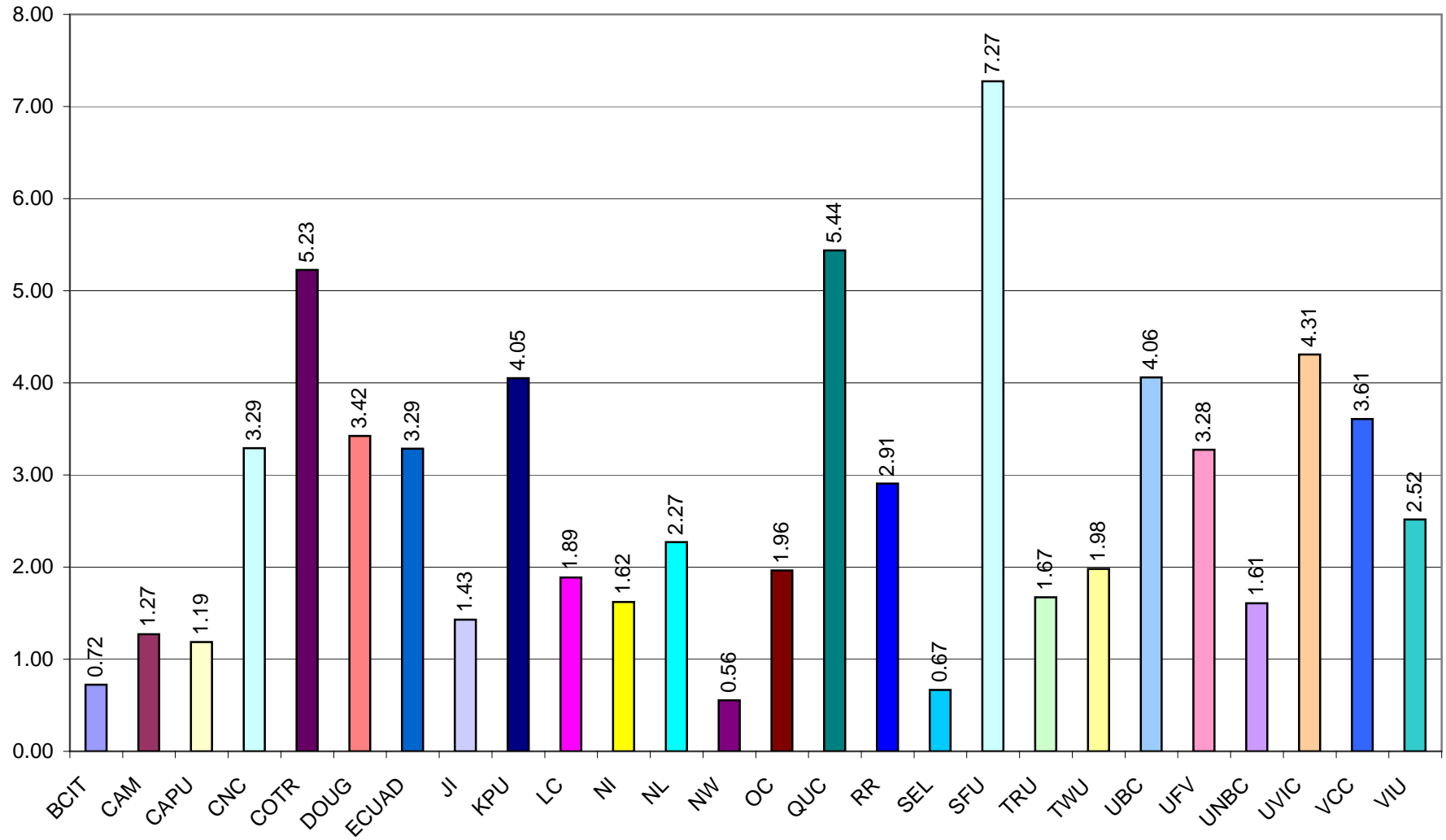
**k) Direct Circulation per Total Volumes: 6(d)/5(f)**



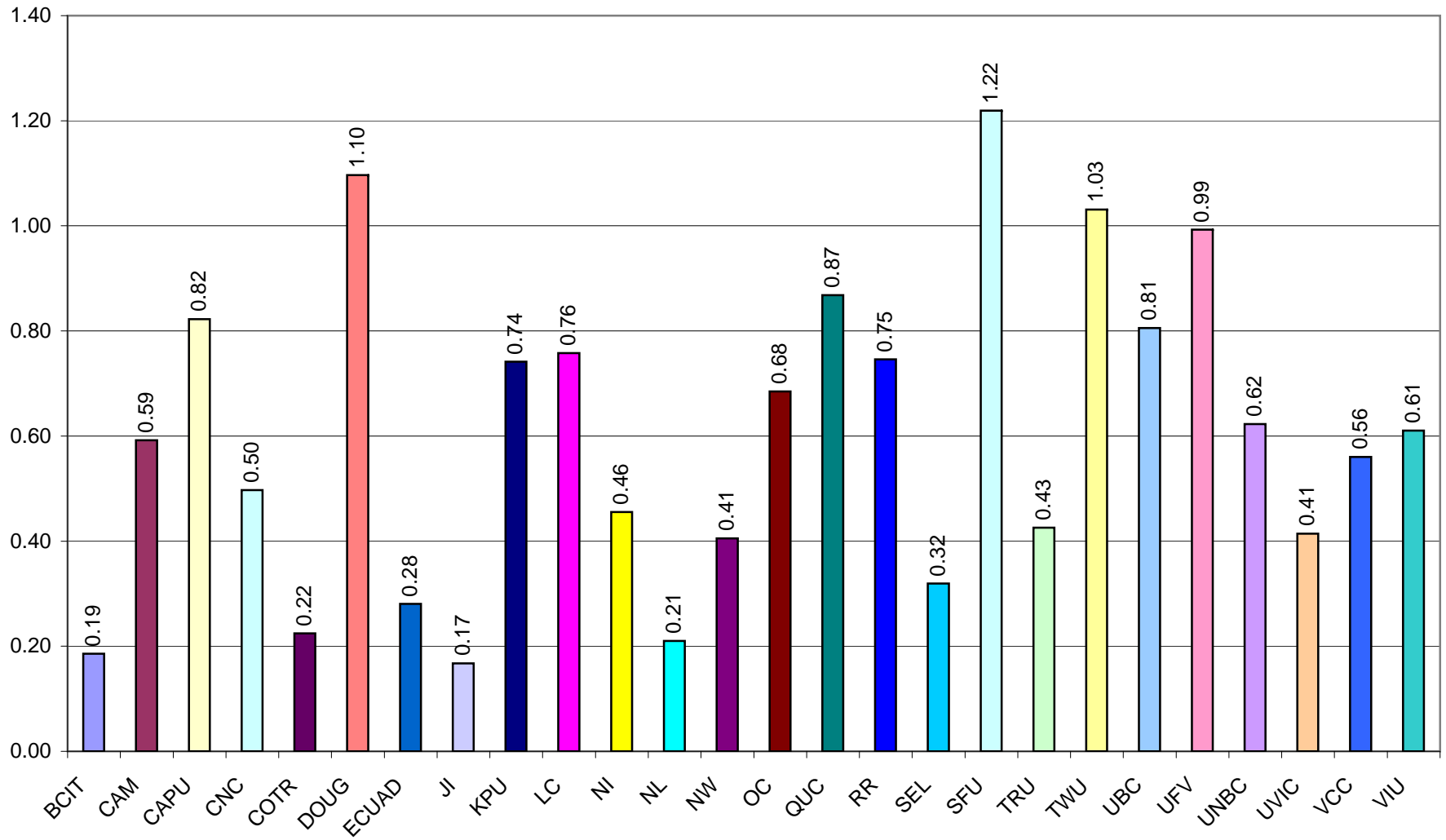
I) Total Library Expenditures per Circulation: 7(l)/6(d)



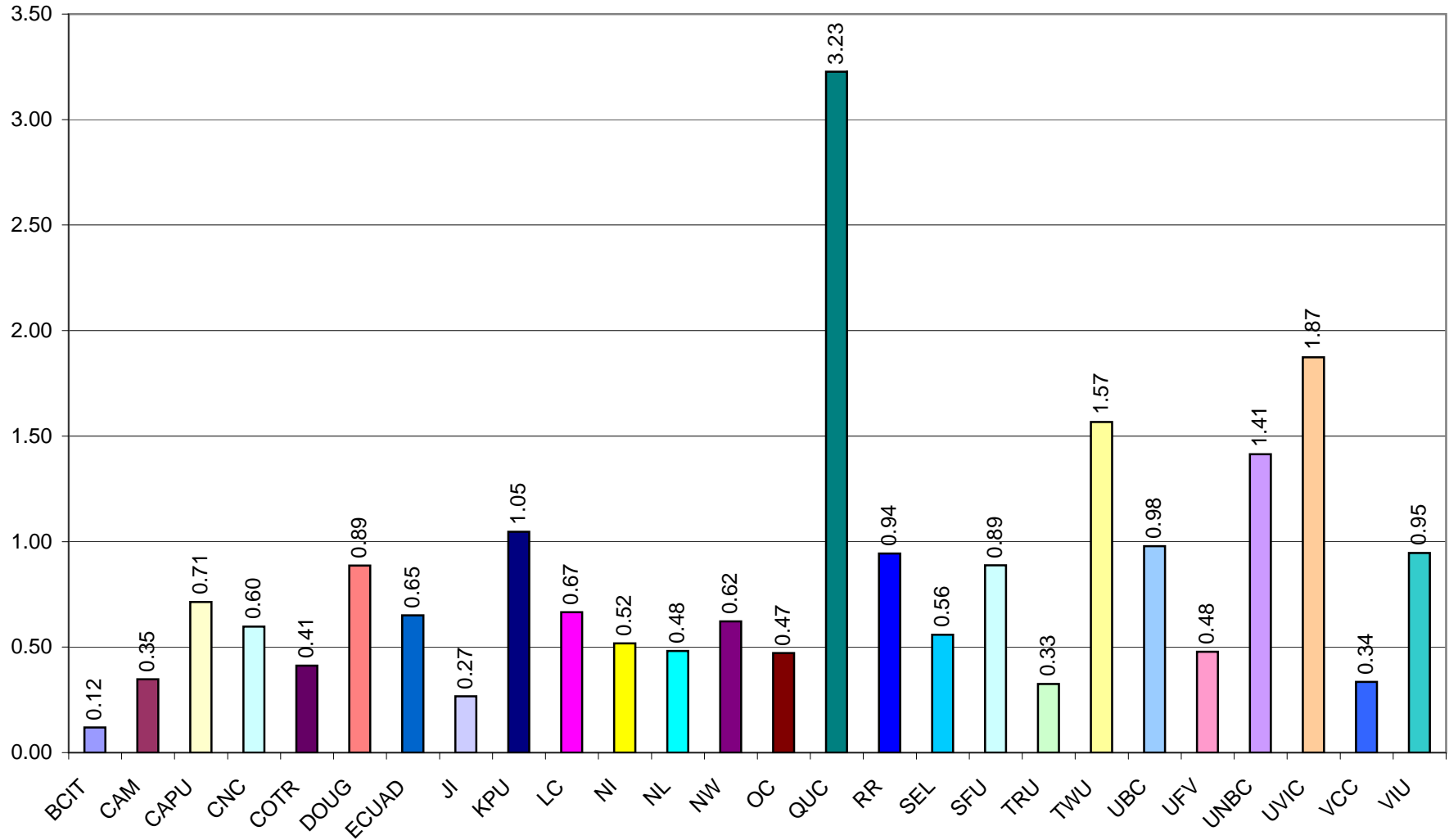
m) Reference Transactions per FTE Student: 6a(iii)/3(f)



n) Number of Students Instructed per FTE Student: 6(b)/3(f)

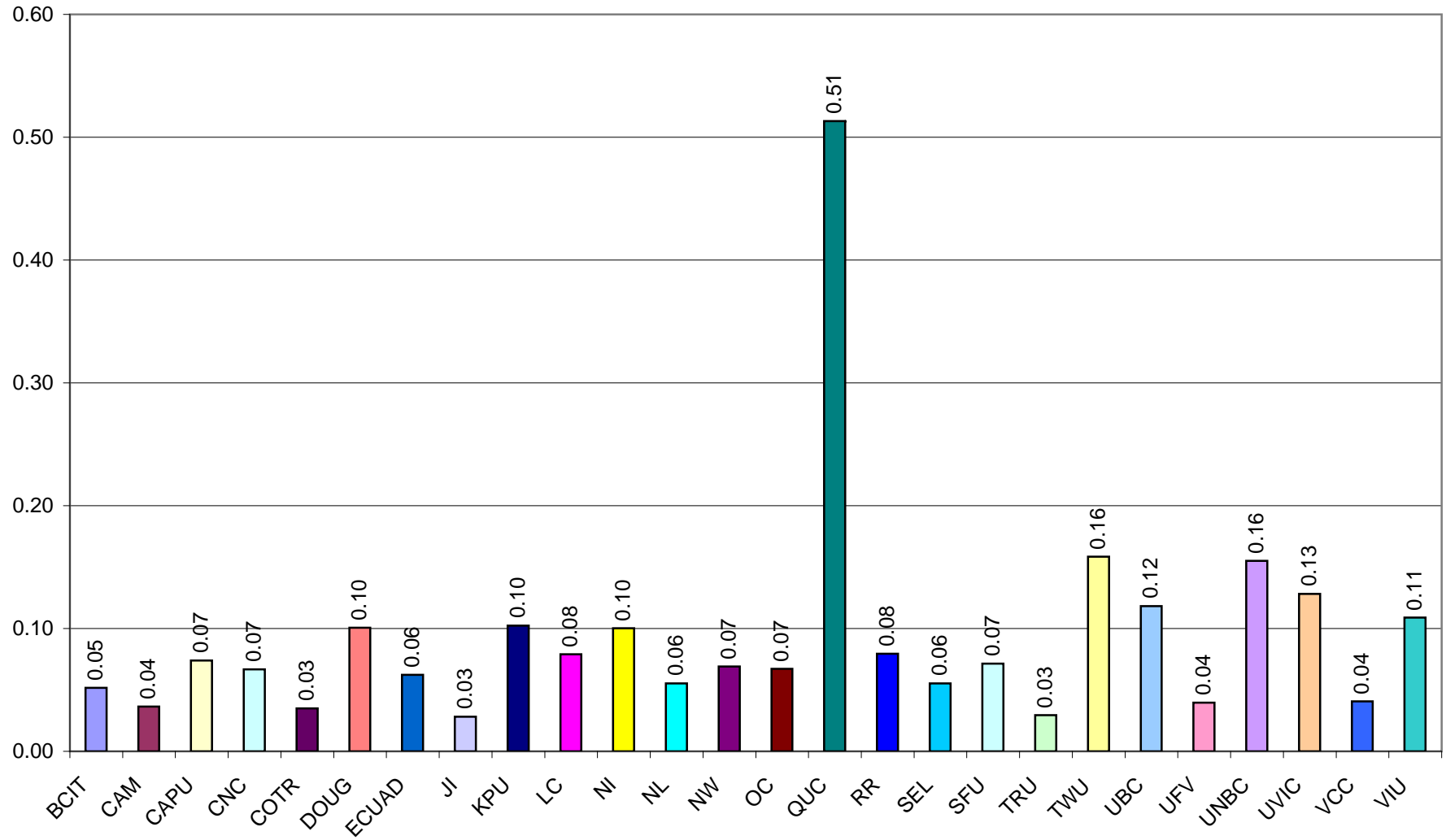


**o) Total Library Area per FTE Student: 9(e) total/3(f)**

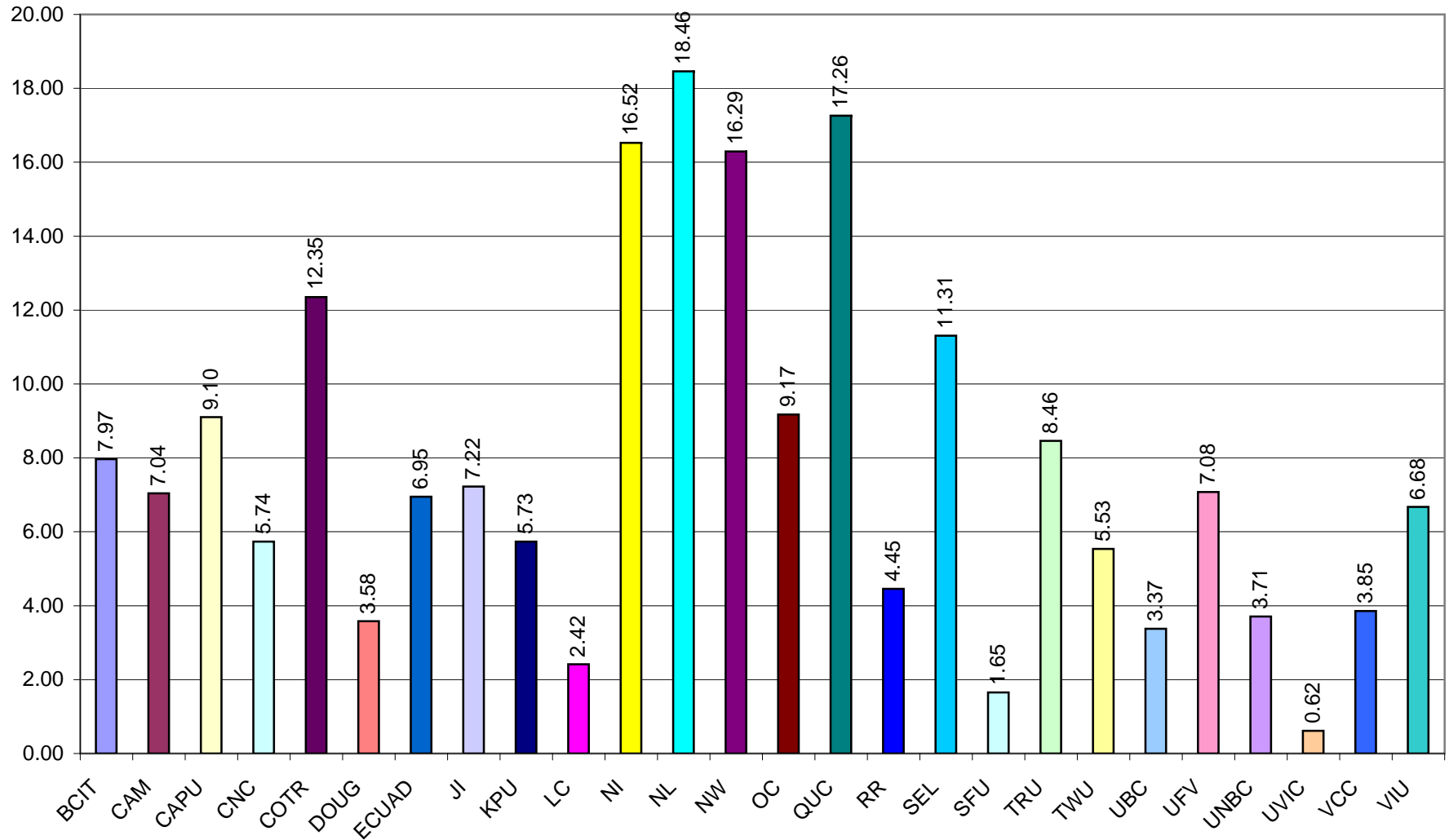




p) Number of Seats per FTE Student: 9(f) total/3(f)



q) Hours Open per FTE Personnel: 9(g) total/4(f)



r) Reference Hours per Total Open Hour: 9(h) total/9(g)

