

# **CPSLD STATISTICS: 2001-2010**

Report data compiled by:  
B. C. Institute of Technology  
Library  
March 2011

## **ACKNOWLEDGEMENTS**

I would like to thank Vancouver Community College's Director of Library and Learning Resources, Lila Heilbrunn for allowing us to acquire and work with copies of the original CPSLD Statistics Report data files.

I would also like to thank Lila Heilbrunn's assistant, Corinna Luk for electronically sending us several comprehensive files containing all of the 2001-2002 report data to the 2009-2010 report data.

I would like to thank my Director, David Pepper for his direction and assistance.

Deidre Lowe  
Serials Assistant, Library  
B. C. Institute of Technology

## **BC ELN Partner Library Tier Model for Database Licensing**

The effective date of the tiers below is September 1st, 2010 - August 31st, 2011.

<b>Tier 1 (Colleges with predominantly 2-year programs)</b>
Alexander College Camosun College College of New Caledonia College of the Rockies Columbia College Douglas College Justice Institute of BC Langara College Nicola Valley Institute of Technology North Island College Northern Lights College Northwest Community College Okanagan College Selkirk College Vancouver Community College Yukon College
<b>Tier 2 (Regional Universities and Institutes with 4-year programs)</b>
British Columbia Institute of Technology Capilano University Kwantlen Polytechnic University University of the Fraser Valley Vancouver Island University
<b>Tier 3 (Small Universities)</b>
Emily Carr University of Art + Design Quest University Canada Royal Roads University Thompson Rivers University Trinity Western University University of Northern British Columbia
<b>Tier 4 (Medium Universities)</b>
Simon Fraser University University of Victoria
<b>Tier 5 (Large Universities)</b>
University of British Columbia

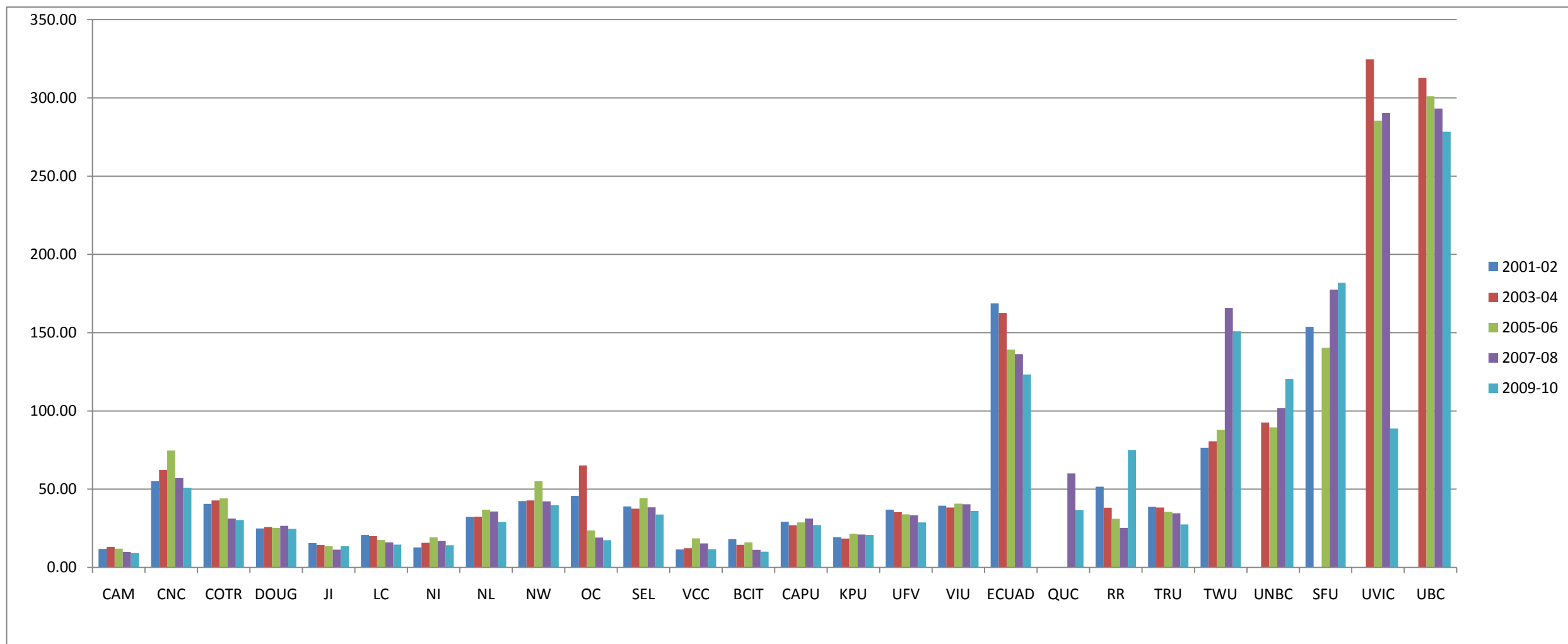
## **NOTES**

- The five Library Tiers information was taken from the BC ELN website 'BC ELN Partner Library Tier Model for Database Licensing'.
- Not all the libraries listed above provide statistics to the CPSLD.
- Rather than using all ten years of data, we used every second year so that the data could be contained in one chart. The 2002-03, 2004-05, 2006-07 and 2008-09 academic years were not used.

## LEGEND

BCIT	British Columbia Institute of Technology
CAM	Camosun College
CAPU	Capilano University
CNC	College of New Caledonia
COTR	College of the Rockies
DOUG	Douglas College
ECUAD	Emily Carr University of Art + Design – formerly ECIAD
JI	Justice Institute of B.C.
KPU	Kwantlen Polytechnic University – formerly KW
LC	Langara College
NI	North Island College
NL	Northern Lights College
NW	Northwest Community College
OC	Okanagan College
QUC	Quest University Canada
RR	Royal Roads University
SEL	Selkirk College
SFU	Simon Fraser University
TRU	Thompson Rivers University – formerly UCC
TWU	Trinity Western University
UBC	University of British Columbia
UFV	University of the Fraser Valley – formerly UCFV
UNBC	University of Northern British Columbia
UVIC	University of Victoria
VCC	Vancouver Community College
VIU	Vancouver Island University – formerly MAL

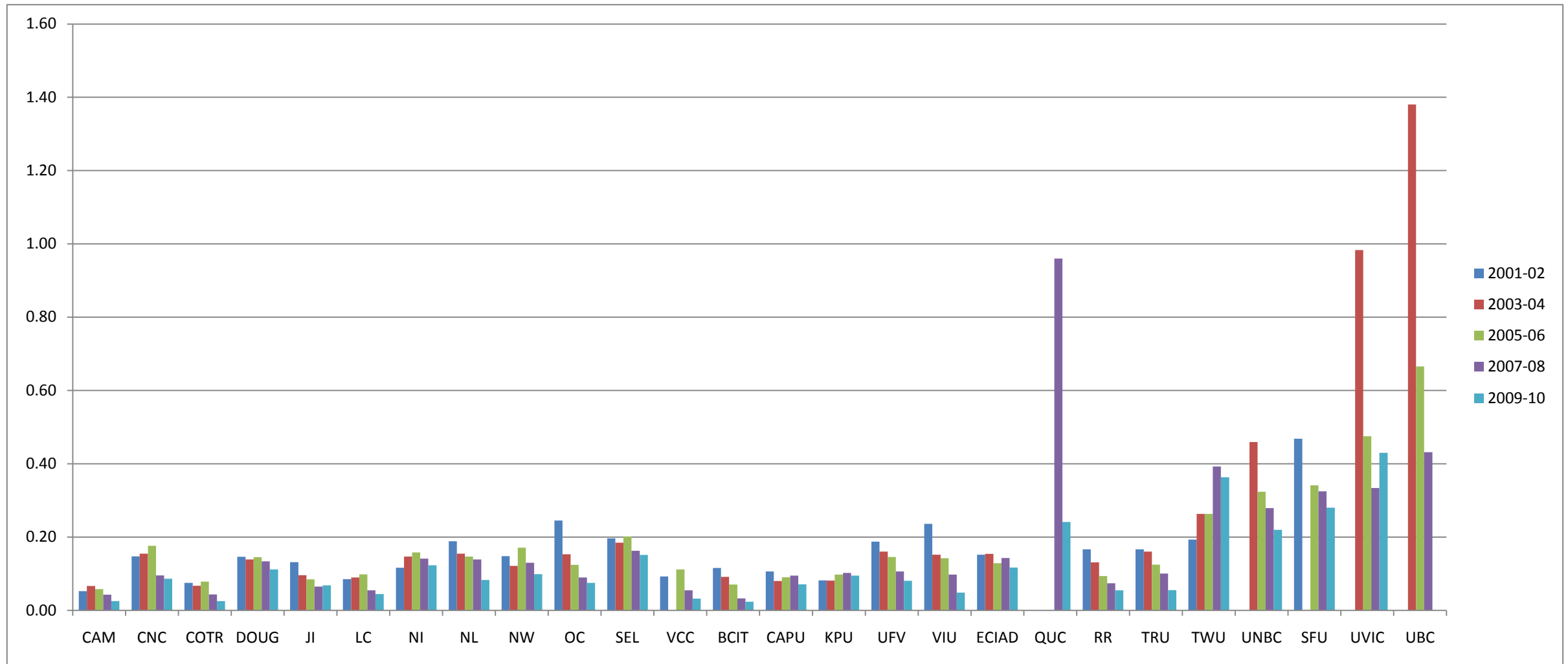
### a) Volumes / FTE Student



Tier	1	1	1	1	1	1	1	1	1	1	1	1	2	2	2	2	2	3	3	3	3	3	3	4	4	5
Library	CAM	CNC	COTR	DOUG	JI	LC	NI	NL	NW	OC	SEL	VCC	BCIT	CAPU	KPU	UFV	VIU	ECUAD	QUC	RR	TRU	TWU	UNBC	SFU	UVIC	UBC
2001-02	11.84	55.11	40.63	24.84	15.66	20.79	12.74	32.19	42.44	45.74	38.92	11.45	18.06	29.20	19.36	36.92	39.48	168.69		51.56	38.67	76.54		153.74		
2003-04	13.20	62.24	42.80	25.78	14.36	19.95	15.69	32.39	42.82	65.17	37.55	12.30	14.45	26.98	18.42	35.31	38.37	162.67		38.12	38.30	80.57	92.65		324.65	312.68
2005-06	12.01	74.62	44.12	25.33	13.55	17.49	19.22	36.90	55.03	23.66	44.21	18.58	15.98	28.71	21.54	33.96	40.73	139.20		31.06	35.42	87.86	89.45	140.29	285.46	301.11
2007-08	9.89	57.14	31.23	26.62	11.30	16.05	16.94	35.77	42.23	19.10	38.44	15.33	11.22	31.28	21.02	33.31	40.36	136.32	60.12	25.34	34.59	165.84	101.76	177.49	290.41	293.10
2009-10	9.13	50.87	30.27	24.61	13.61	14.53	14.25	29.02	39.67	17.43	33.80	11.62	10.10	27.08	20.72	28.72	36.12	123.33	36.57	75.04	27.52	150.85	120.33	181.87	88.80	278.46

NOTE: Blank cell - Library did not report in this year.

### b) Subscriptions / FTE Student

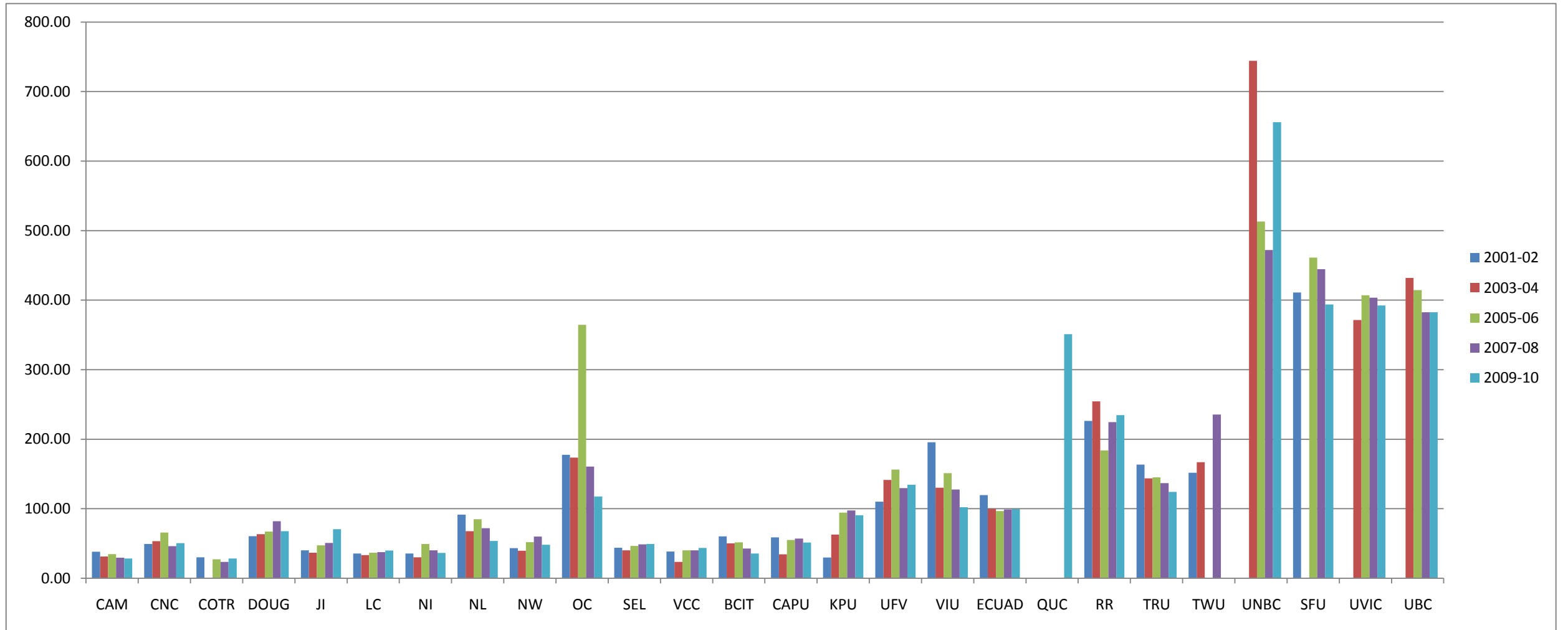


Tier	1	1	1	1	1	1	1	1	1	1	1	1	2	2	2	2	2	3	3	3	3	3	3	4	4	5
Library	CAM	CNC	COTR	DOUG	JI	LC	NI	NL	NW	OC	SEL	VCC	BCIT	CAPU	KPU	UFV	VIU	ECIAD	QUC	RR	TRU	TWU	UNBC	SFU	UVIC	UBC
2001-02	0.05	0.15	0.08	0.15	0.13	0.09	0.12	0.19	0.15	0.25	0.20	0.09	0.12	0.11	0.08	0.19	0.24	0.15	0.00	0.17	0.17	0.19		0.47		
2003-04	0.07	0.15	0.07	0.14	0.10	0.09	0.15	0.15	0.12	0.15	0.18	0.00	0.09	0.08	0.08	0.16	0.15	0.15	0.00	0.13	0.16	0.26	0.46		0.98	1.38
2005-06	0.06	0.18	0.08	0.15	0.08	0.10	0.16	0.15	0.17	0.12	0.20	0.11	0.07	0.09	0.10	0.15	0.14	0.13	0.00	0.09	0.12	0.26	0.32	0.34	0.48	0.67
2007-08	0.04	0.10	0.04	0.13	0.06	0.05	0.14	0.14	0.13	0.09	0.16	0.05	0.03	0.10	0.10	0.11	0.10	0.14	0.96	0.07	0.10	0.39	0.28	0.32	0.33	0.43
2009-10	0.03	0.09	0.03	0.11	0.07	0.04	0.12	0.08	0.10	0.08	0.15	0.03	0.02	0.07	0.09	0.08	0.05	0.12	0.24	0.05	0.06	0.36	0.22	0.28	0.43	

NOTE: Blank cell - Library did not report in this year.

To make the chart more viewable, UBC's 2009-10 result (2.31/FTE) was omitted.

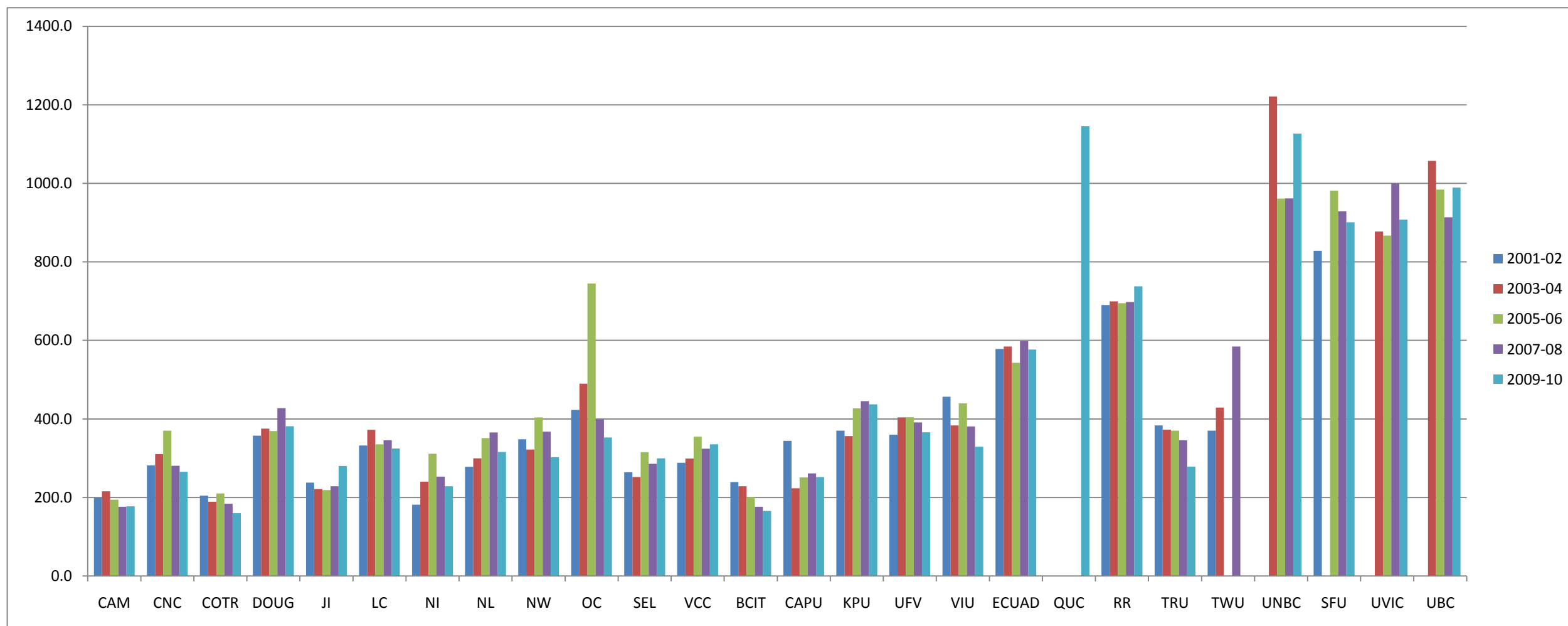
### c) Collection Expenditures / FTE Student



Tier	1	1	1	1	1	1	1	1	1	1	1	1	2	2	2	2	2	3	3	3	3	3	3	4	4	5
Library	CAM	CNC	COTR	DOUG	JI	LC	NI	NL	NW	OC	SEL	VCC	BCIT	CAPU	KPU	UFV	VIU	ECUAD	QUC	RR	TRU	TWU	UNBC	SFU	UVIC	UBC
2001-02	38.08	49.25	30.16	60.56	40.21	35.64	35.59	91.40	43.27	177.40	43.97	38.38	60.05	58.62	29.73	110.07	195.47	119.44		226.28	163.37	151.81	0.00	411.01		
2003-04	31.14	53.33	*	63.45	36.73	33.12	30.12	67.54	39.55	173.33	40.11	23.33	50.12	34.35	62.89	141.27	130.14	99.82		254.36	143.75	166.90	744.25		371.43	431.79
2005-06	34.75	65.50	27.14	67.06	47.30	36.59	49.19	84.78	51.86	364.51	46.28	40.22	51.47	54.97	94.31	156.12	151.14	96.52		183.83	145.01	*	513.05	461.26	406.90	414.27
2007-08	29.48	46.14	23.44	82.00	50.81	37.38	40.06	71.83	59.80	160.57	48.82	39.99	42.66	56.93	97.59	129.70	127.53	98.85		224.45	136.83	235.35	472.16	444.63	403.41	382.60
2009-10	28.42	50.54	28.24	67.77	70.53	39.89	36.24	53.47	48.00	117.65	49.20	43.44	35.55	51.31	90.70	134.51	102.07	99.46	350.94	234.44	124.00	*	655.83	393.81	392.18	382.69

Blank cell - Library did not report in this year. \* Total Collection Budget data not available. NOTE: QUC 2007-08 data was omitted to make other results viewable. (\$2,573.33/FTE)

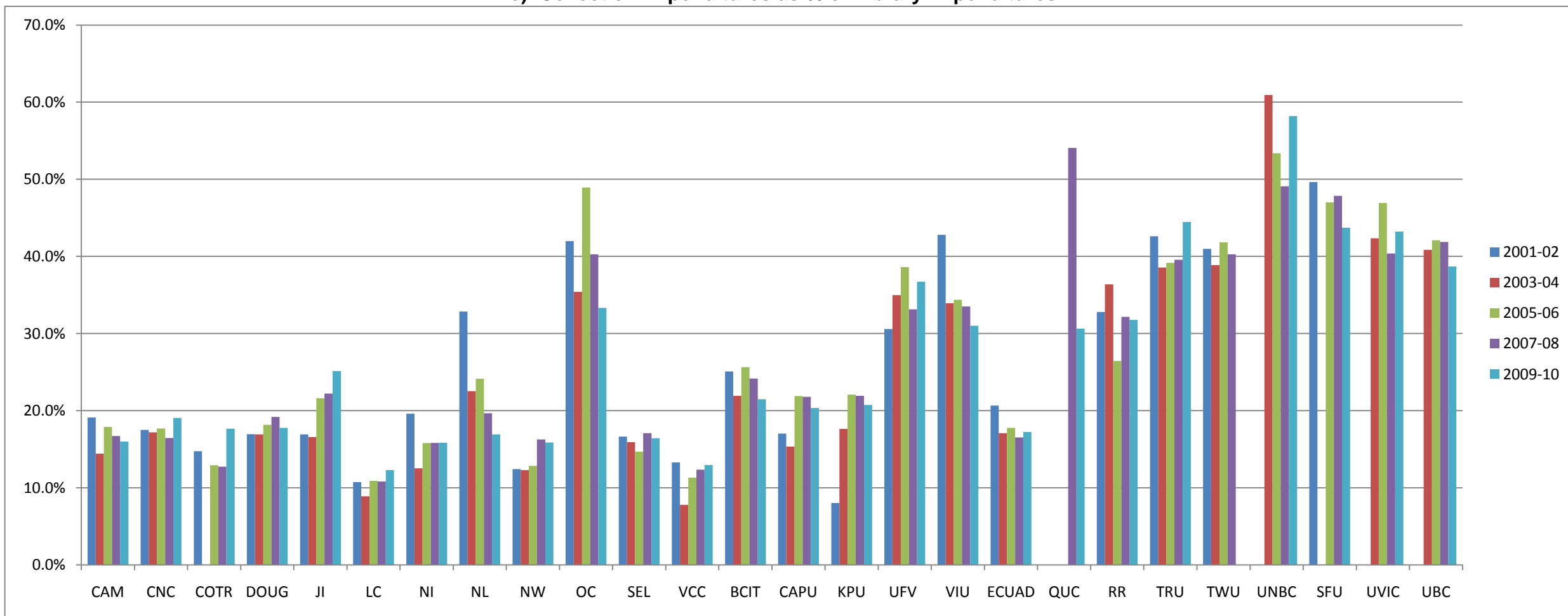
### d) Library Expenditures / FTE Student



Tier	1	1	1	1	1	1	1	1	1	1	1	1	2	2	2	2	2	3	3	3	3	3	3	4	4	5
Library	CAM	CNC	COTR	DOUG	JI	LC	NI	NL	NW	OC	SEL	VCC	BCIT	CAPU	KPU	UFV	VIU	ECUAD	QUC	RR	TRU	TWU	UNBC	SFU	UVIC	UBC
2001-02	199.3	281.6	204.5	357.3	237.6	332.1	181.6	278.3	348.3	422.6	264.3	288.5	239.3	344.2	370.1	360.0	456.9	578.3		690.0	383.4	370.4		828.0		
2003-04	215.9	310.2	189.3	375.1	221.6	372.3	240.4	299.7	322.0	489.7	252.0	299.0	228.7	223.7	356.5	403.8	383.6	584.6		699.4	372.8	429.2	1221.3		877.3	1057.0
2005-06	194.1	370.1	210.0	369.4	218.9	335.5	311.7	351.4	403.8	745.0	315.3	355.0	200.9	251.0	426.8	404.4	439.6	543.1		695.1	370.3		961.1	981.4	867.1	984.1
2007-08	176.5	280.6	184.0	427.6	228.7	345.7	253.2	365.5	367.6	398.7	285.9	324.0	176.5	261.2	445.3	391.3	380.8	598.3	note	697.9	345.8	584.3	961.9	929.0	999.3	913.4
2009-10	177.6	265.4	159.9	381.6	280.5	324.8	228.6	316.0	302.6	353.0	299.7	335.3	165.6	252.3	437.4	366.3	329.3	577.0	1145.7	738.0	278.9		1126.8	900.7	907.5	989.3

Blank cell - Library did not report in this year. NOTE: removed QUC's 2007-08 result (\$4,759.71/FTE) to make other results viewable.

### e) Collection Expenditures as % of Library Expenditures



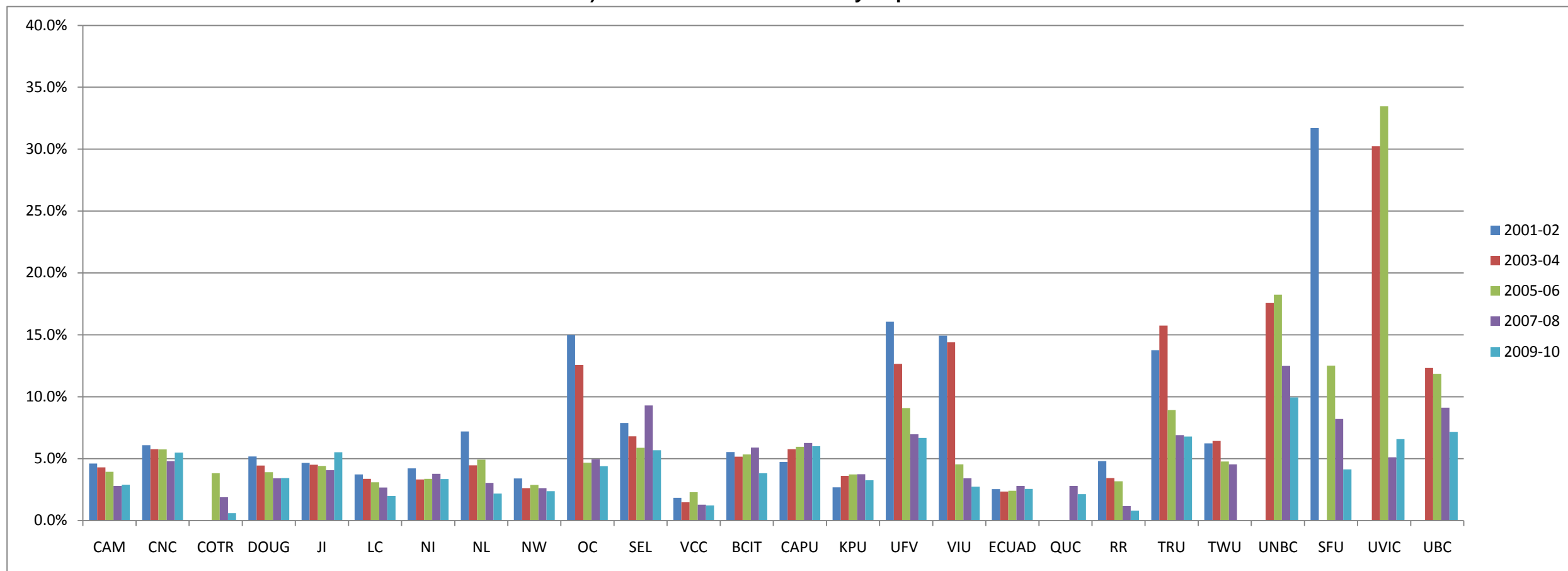
Tier	1	1	1	1	1	1	1	1	1	1	1	1	2	2	2	2	2	3	3	3	3	3	3	4	4	5
Library	CAM	CNC	COTR	DOUG	JI	LC	NI	NL	NW	OC	SEL	VCC	BCIT	CAPU	KPU	UFV	VIU	ECUAD	QUC	RR	TRU	TWU	UNBC	SFU	UVIC	UBC
2001-02	19.1%	17.5%	14.7%	16.9%	16.9%	10.7%	19.6%	32.8%	12.4%	42.0%	16.6%	13.3%	25.1%	17.0%	8.0%	30.6%	42.8%	20.7%		32.8%	42.6%	41.0%		49.6%		
2003-04	14.4%	17.2%	0.0%	16.9%	16.6%	8.9%	12.5%	22.5%	12.3%	35.4%	15.9%	7.8%	21.9%	15.4%	17.6%	35.0%	33.9%	17.1%		36.4%	38.6%	38.9%	60.9%		42.3%	40.9%
2005-06	17.9%	17.7%	12.9%	18.2%	21.6%	10.9%	15.8%	24.1%	12.8%	48.9%	14.7%	11.3%	25.6%	21.9%	22.1%	38.6%	34.4%	17.8%		26.4%	39.2%	41.8%	53.4%	47.0%	46.9%	42.1%
2007-08	16.7%	16.4%	12.7%	19.2%	22.2%	10.8%	15.8%	19.7%	16.3%	40.3%	17.1%	12.3%	24.2%	21.8%	21.9%	33.1%	33.5%	16.5%	54.1%	32.2%	39.6%	40.3%	49.1%	47.9%	40.4%	41.9%
2009-10	16.0%	19.0%	17.7%	17.8%	25.1%	12.3%	15.9%	16.9%	15.9%	33.3%	16.4%	13.0%	21.5%	20.3%	20.7%	36.7%	31.0%	17.2%	30.6%	31.8%	44.5%	*	58.2%	43.7%	43.2%	38.7%

NOTES: Blank cell - Library did not report in this year.

\* Total Collection Budget amount not available



### f) Periodicals as % of Library Expenditures



Tier	1	1	1	1	1	1	1	1	1	1	1	1	2	2	2	2	2	3	3	3	3	3	3	4	4	5
Library	CAM	CNC	COTR	DOUG	JI	LC	NI	NL	NW	OC	SEL	VCC	BCIT	CAPU	KPU	UFV	VIU	ECUAD	QUC	RR	TRU	TWU	UNBC	SFU	UVIC	UBC
2001-02	4.6%	6.1%	N/A	5.2%	4.7%	3.7%	4.2%	7.2%	3.4%	15.0%	7.9%	1.8%	5.5%	4.7%	2.7%	16.1%	14.9%	2.5%		4.8%	13.8%	6.2%		31.7%		
2003-04	4.3%	5.8%	N/A	4.4%	4.5%	3.4%	3.3%	4.5%	2.6%	12.6%	6.8%	1.5%	5.2%	5.8%	3.6%	12.7%	14.4%	2.4%		3.4%	15.7%	6.4%	17.6%		30.2%	12.3%
2005-06	3.9%	5.7%	3.8%	3.9%	4.4%	3.1%	3.4%	4.9%	2.9%	4.7%	5.9%	2.3%	5.3%	6.0%	3.7%	9.1%	4.5%	2.4%		3.2%	8.9%	4.8%	18.3%	12.5%	33.5%	11.9%
2007-08	2.8%	4.8%	1.9%	3.4%	4.1%	2.7%	3.8%	3.1%	2.6%	5.0%	9.3%	1.3%	5.9%	6.3%	3.7%	7.0%	3.4%	2.8%	2.8%	1.2%	6.9%	4.5%	12.5%	8.2%	5.1%	9.1%
2009-10	2.9%	5.5%	0.6%	3.4%	5.5%	2.0%	3.4%	2.2%	2.4%	4.4%	5.7%	1.2%	3.8%	6.0%	3.3%	6.7%	2.7%	2.6%	2.1%	0.8%	6.8%	N/A	10.0%	4.1%	6.6%	7.2%

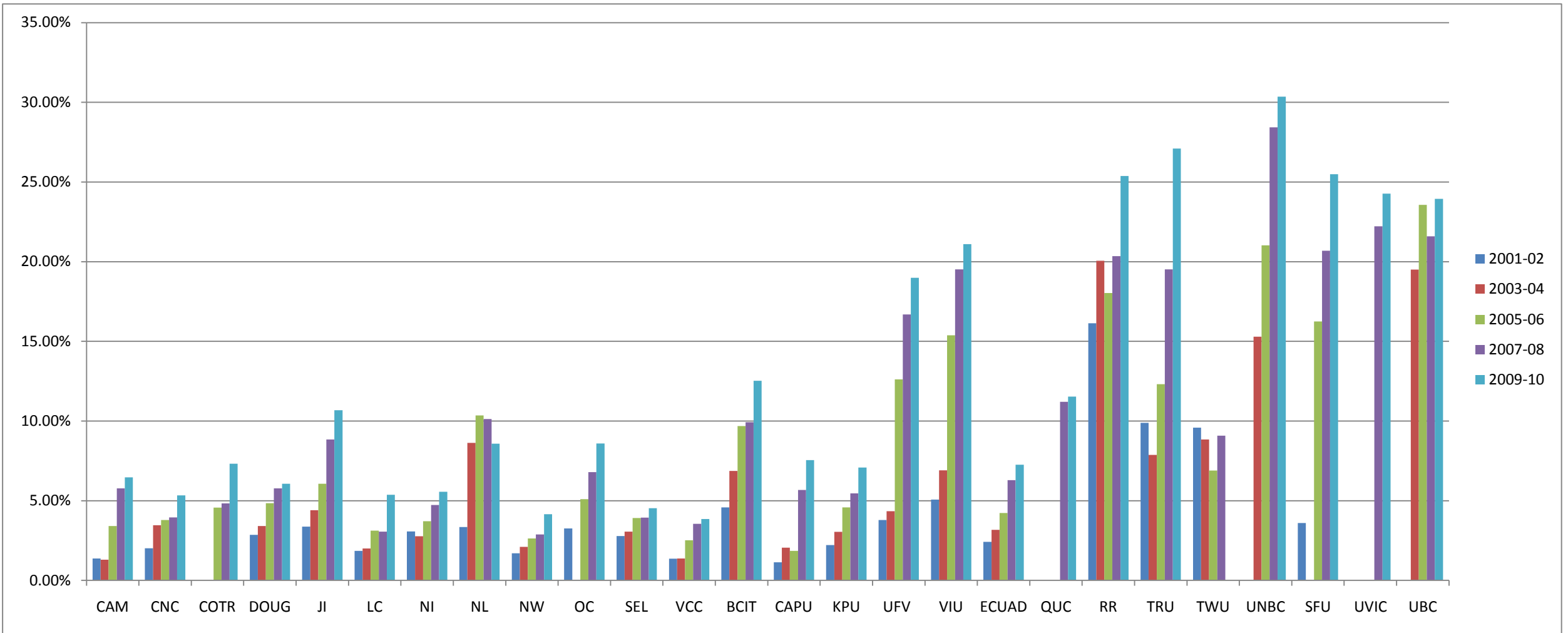
N/A – Total Print Periodicals total was not available.

Blank cells - Library did not report in this year.

UVIC's 2003-04 & 2005-06 amounts included electronic subscriptions.

SFU's 2001-02 amount includes classed serials expenditures as well as periodicals.

**g) Electronic Services as % of Library Expenditures**

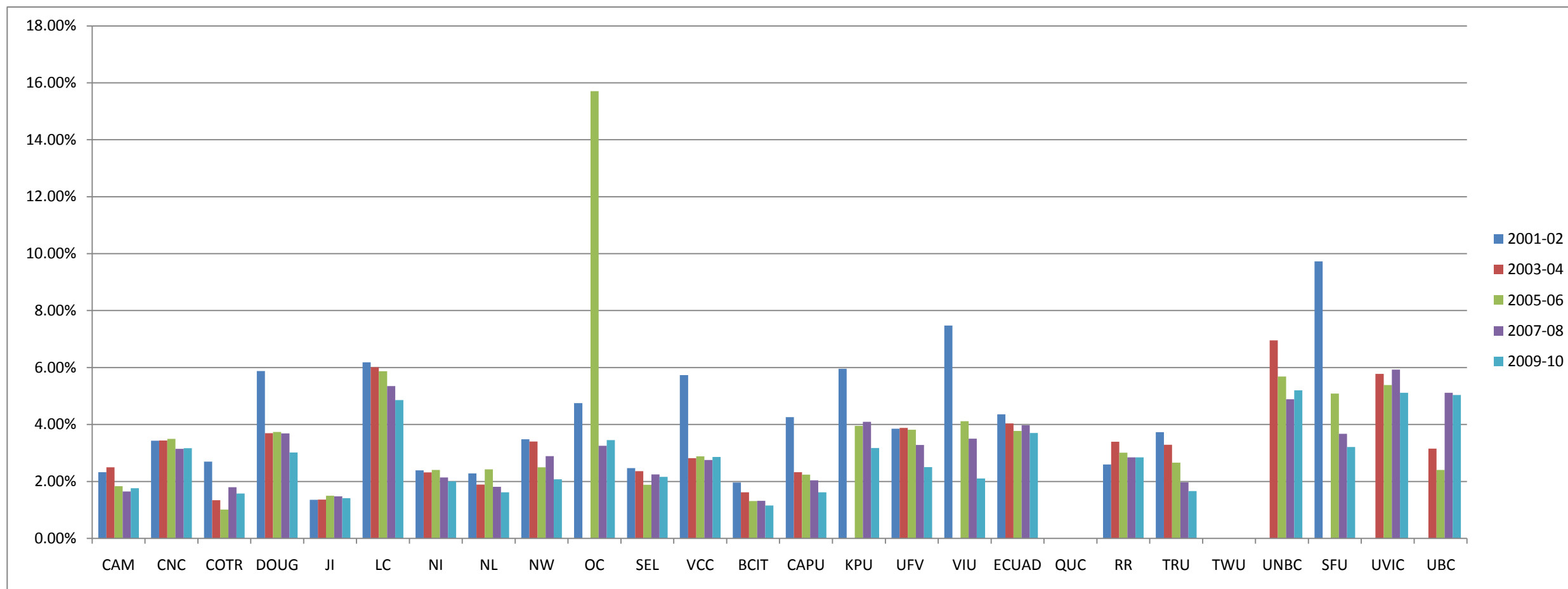


Tier	1	1	1	1	1	1	1	1	1	1	1	1	2	2	2	2	2	3	3	3	3	3	3	4	4	5
Library	CAM	CNC	COTR	DOUG	JI	LC	NI	NL	NW	OC	SEL	VCC	BCIT	CAPU	KPU	UFV	VIU	ECUAD	QUC	RR	TRU	TWU	UNBC	SFU	UVIC	UBC
2001-02	1.37%	2.01%	*	2.85%	3.37%	1.85%	3.08%	3.35%	1.70%	3.26%	2.79%	1.36%	4.58%	1.14%	2.22%	3.79%	5.07%	2.42%		16.13%	9.89%	9.59%		3.60%		
2003-04	1.30%	3.46%	*	3.41%	4.41%	2.00%	2.78%	8.64%	2.11%	*	3.07%	1.38%	6.87%	2.06%	3.05%	4.34%	6.90%	3.17%		20.06%	7.87%	8.85%	15.29%		*	19.51%
2005-06	3.41%	3.79%	4.57%	4.84%	6.07%	3.12%	3.72%	10.35%	2.64%	5.09%	3.92%	2.52%	9.69%	1.86%	4.59%	12.62%	15.38%	4.22%		18.04%	12.31%	6.90%	21.03%	16.25%	*	23.56%
2007-08	5.77%	3.95%	4.83%	5.77%	8.84%	3.06%	4.74%	10.13%	2.88%	6.79%	3.94%	3.55%	9.93%	5.67%	5.46%	16.69%	19.51%	6.29%	11.21%	20.35%	19.52%	9.08%	28.43%	20.68%	22.22%	21.59%
2009-10	6.47%	5.34%	7.33%	6.06%	10.68%	5.38%	5.57%	8.58%	4.15%	8.59%	4.54%	3.85%	12.53%	7.55%	7.08%	18.99%	21.10%	7.26%	11.53%	25.37%	27.10%	*	30.36%	25.49%	24.27%	23.95%

NOTES: Blank cells - Library did not report in this year.

Cells with \* - Total Electronic Services were not reported separately from Total Collection Budget amount.

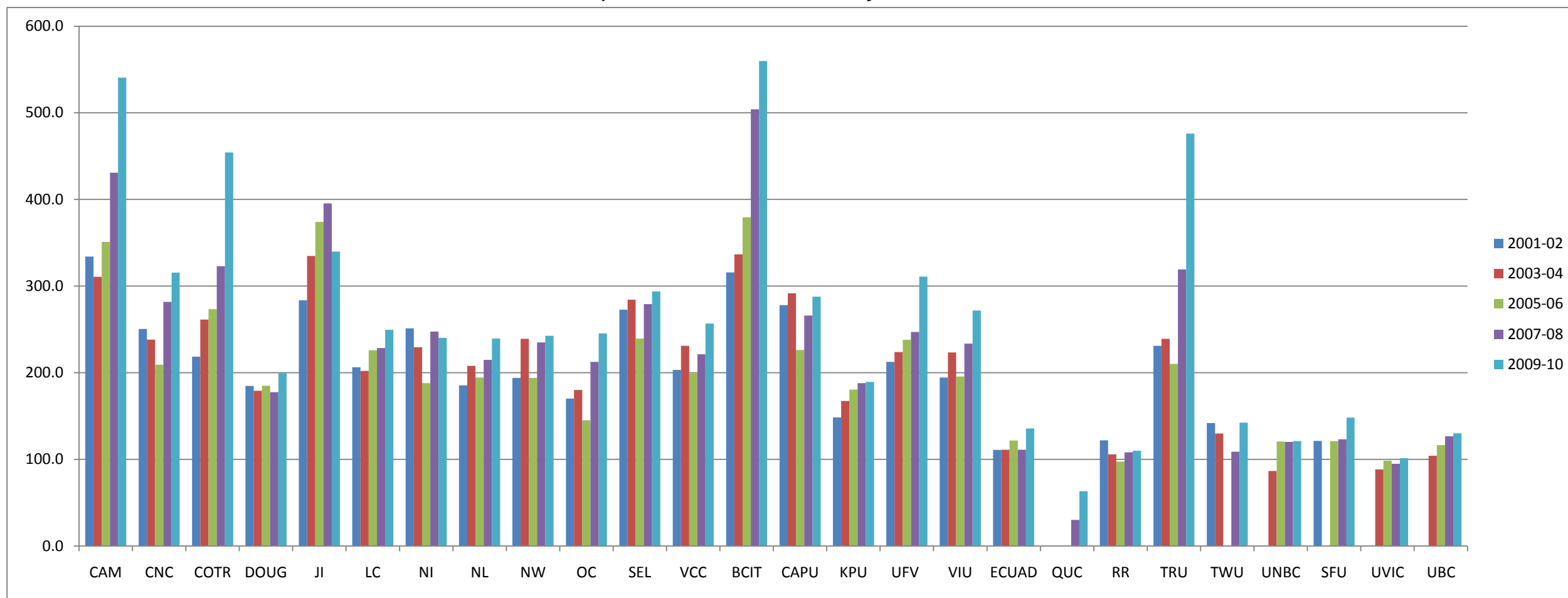
### h) Library Expenditures as % of Institutional Budget



Tier	1	1	1	1	1	1	1	1	1	1	1	1	2	2	2	2	2	3	3	3	3	3	3	4	4	5
Library	CAM	CNC	COTR	DOUG	JI	LC	NI	NL	NW	OC	SEL	VCC	BCIT	CAPU	KPU	UFV	VIU	ECUAD	QUC	RR	TRU	TWU	UNBC	SFU	UVIC	UBC
2001-02	2.32%	3.43%	2.69%	5.88%	1.35%	6.19%	2.39%	2.28%	3.48%	4.75%	2.47%	5.74%	1.96%	4.26%	5.96%	3.85%	7.47%	4.36%		2.60%	3.73%	*		9.73%		
2003-04	2.50%	3.44%	1.34%	3.69%	1.36%	6.01%	2.32%	1.89%	3.40%	*	2.36%	2.82%	1.62%	2.32%	*	3.88%	*	4.04%		3.40%	3.29%	*	6.96%		5.78%	3.15%
2005-06	1.83%	3.49%	1.01%	3.73%	1.50%	5.87%	2.40%	2.43%	2.50%	15.71%	1.88%	2.88%	1.31%	2.24%	3.95%	3.82%	4.12%	3.77%		3.01%	2.66%	*	5.68%	5.09%	5.38%	2.40%
2007-08	1.65%	3.15%	1.80%	3.69%	1.48%	5.35%	2.14%	1.81%	2.89%	3.25%	2.25%	2.75%	1.32%	2.04%	4.09%	3.28%	3.50%	3.98%	*	2.85%	1.97%	*	4.89%	3.67%	5.93%	5.12%
2009-10	1.76%	3.17%	1.57%	3.02%	1.42%	4.85%	2.00%	1.62%	2.08%	3.45%	2.16%	2.86%	1.15%	1.62%	3.17%	2.51%	2.10%	3.70%	*	2.85%	1.66%	*	5.20%	3.21%	5.12%	5.04%

NOTES: Blank cells - years that library did not report;      Cells with \* - Institutional Budget information was not available  
 Okanagan College 2005-06 - Institutional Budget amount was a much lower amount than the 2001-02, 2007-08 and 2009-10 years.

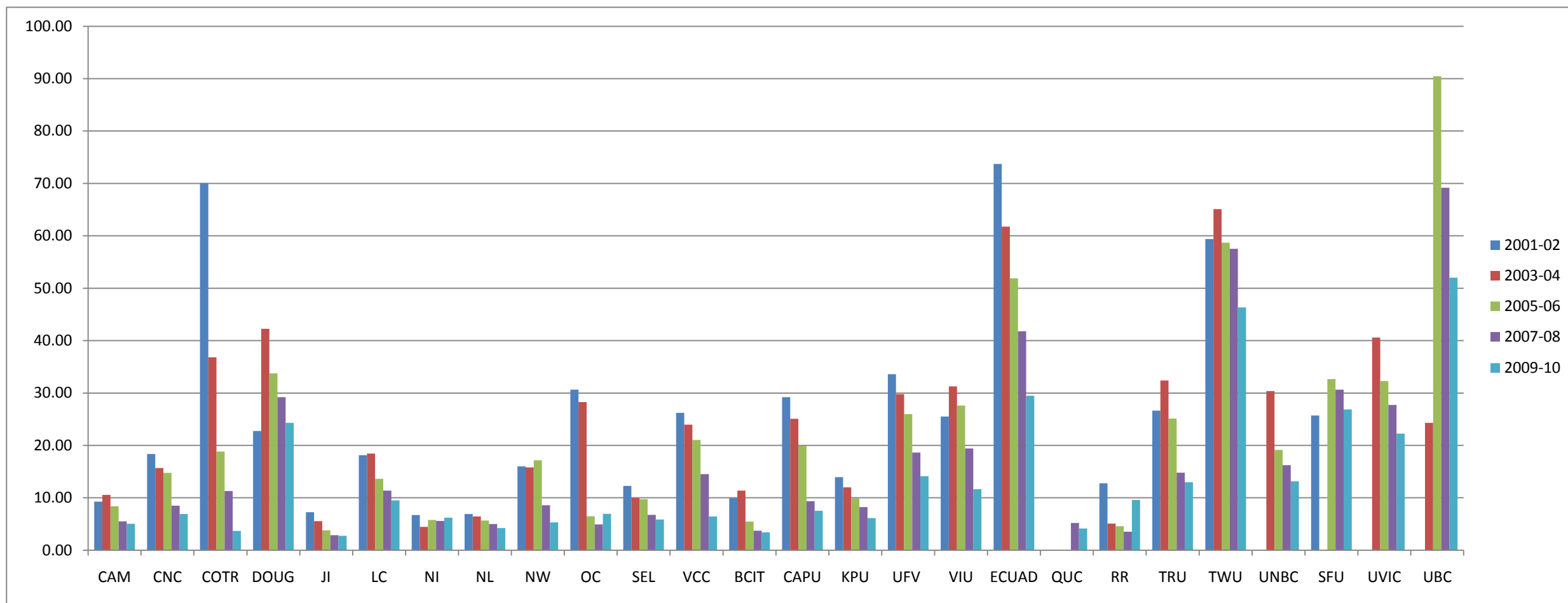
### i) FTE Students / FTE Library Personnel



Tier	1	1	1	1	1	1	1	1	1	1	1	1	2	2	2	2	2	3	3	3	3	3	3	4	4	5
Library	CAM	CNC	COTR	DOUG	JI	LC	NI	NL	NW	OC	SEL	VCC	BCIT	CAPU	KPU	UFV	VIU	ECUAD	QUC	RR	TRU	TWU	UNBC	SFU	UVIC	UBC
2001-02	334.0	250.4	218.5	184.7	283.7	206.3	251.1	185.4	193.9	170.2	272.7	203.3	315.7	278.1	148.3	212.4	194.4	110.9		122.0	231.0	141.9		121.4		
2003-04	310.8	238.1	261.3	179.1	334.8	202.1	229.4	207.9	239.2	180.1	284.4	231.1	336.5	291.6	167.4	224.0	223.3	111.1		105.9	239.2	129.9	86.5		88.3	104.2
2005-06	351.0	209.4	273.4	185.0	374.1	226.0	188.1	194.5	194.1	145.2	239.5	199.2	379.5	226.1	180.6	238.0	195.6	121.7		97.4	210.2		120.6	121.2	98.5	116.5
2007-08	430.8	281.9	323.0	177.7	395.6	228.6	247.4	215.0	235.1	212.5	279.2	221.4	504.0	266.0	188.1	247.1	233.6	111.1	30.0	108.0	319.2	108.9	120.1	123.2	94.8	126.7
2009-10	540.5	315.6	454.2	199.6	339.9	249.6	240.4	239.5	242.5	245.3	293.7	256.7	559.8	287.9	189.5	311.0	271.8	135.7	63.1	110.0	476.1	142.3	121.0	148.1	101.3	130.0

NOTE: Blank cell - Library did not report in this year.

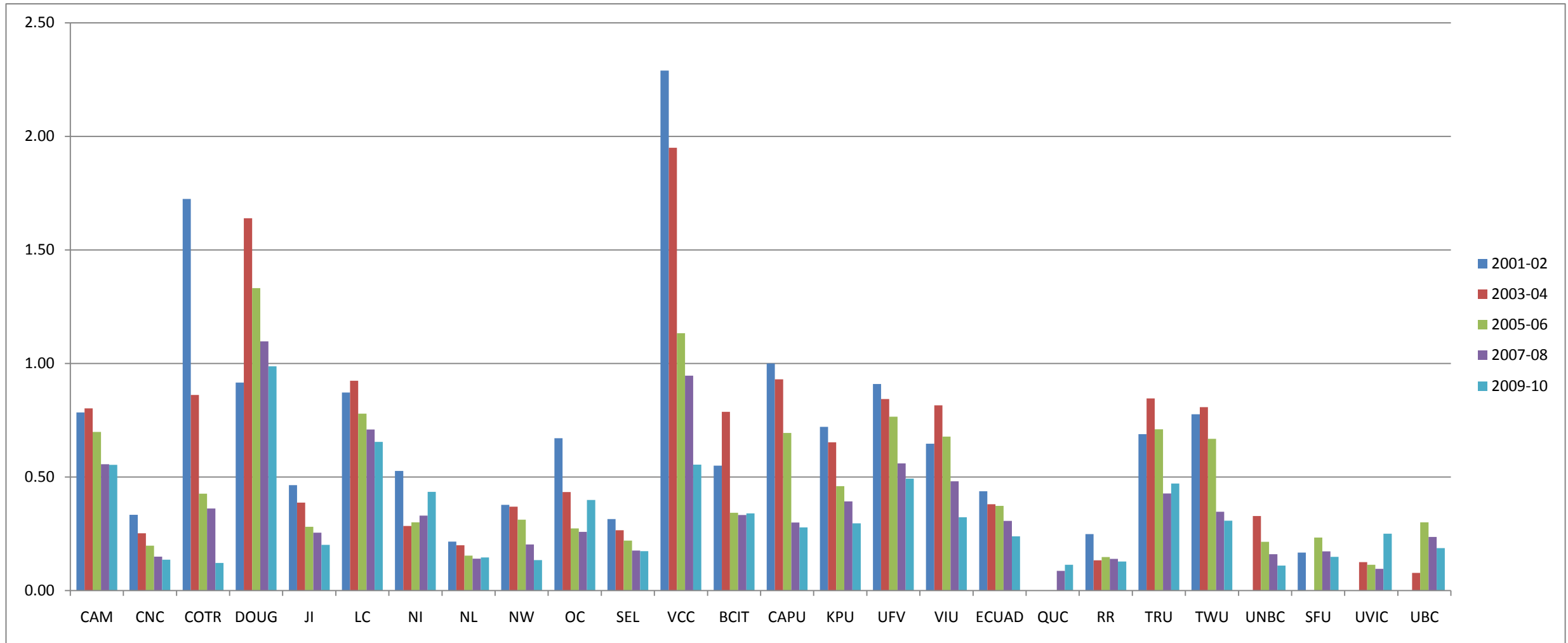
j) Direct Circulation / FTE Student



Tier	1	1	1	1	1	1	1	1	1	1	1	1	2	2	2	2	2	3	3	3	3	3	3	4	4	5
Library	CAM	CNC	COTR	DOUG	JI	LC	NI	NL	NW	OC	SEL	VCC	BCIT	CAPU	KPU	UFV	VIU	ECUAD	QUC	RR	TRU	TWU	UNBC	SFU	UVIC	UBC
2001-02	9.29	18.35	70.05	22.74	7.26	18.13	6.71	6.92	16.00	30.66	12.25	26.22	9.93	29.19	13.95	33.58	25.53	73.72		12.79	26.64	59.37		25.71		
2003-04	10.58	15.67	36.83	42.25	5.56	18.44	4.46	6.45	15.82	28.25	9.97	23.97	11.37	25.10	12.01	29.77	31.28	61.76		5.08	32.39	65.08	30.39		40.60	24.29
2005-06	8.38	14.74	18.82	33.73	3.80	13.62	5.76	5.66	17.17	6.46	9.73	21.04	5.47	19.92	9.89	25.99	27.62	51.90		4.57	25.13	58.67	19.15	32.66	32.28	90.45
2007-08	5.50	8.52	11.29	29.21	2.87	11.38	5.58	5.02	8.58	4.93	6.76	14.50	3.73	9.36	8.24	18.64	19.42	41.81	5.21	3.52	14.79	57.53	16.23	30.65	27.72	69.18
2009-10	5.05	6.91	3.67	24.29	2.74	9.51	6.19	4.22	5.30	6.95	5.84	6.45	3.43	7.52	6.13	14.14	11.65	29.46	4.14	9.57	12.97	46.32	13.18	26.89	22.24	52.00

NOTE: Blank cells - Library did not report in this year.

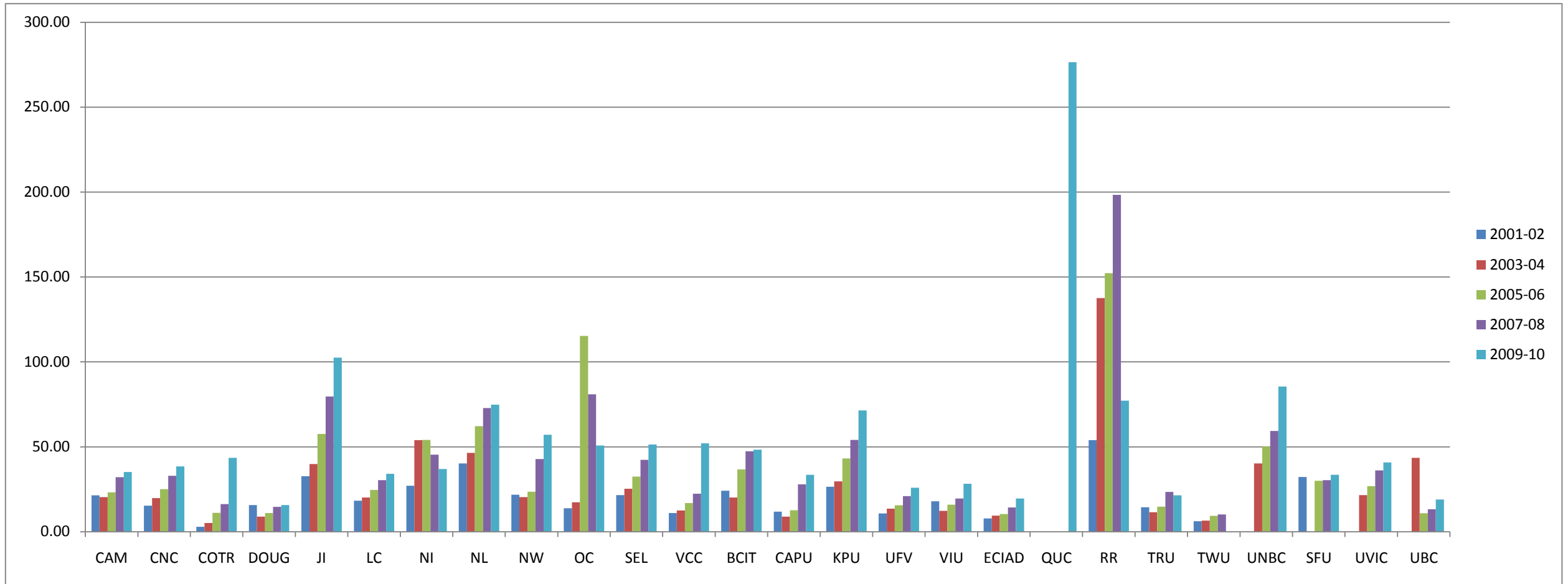
### k) Direct Circulation / Total Volumes



Tier	1	1	1	1	1	1	1	1	1	1	1	1	2	1	2	2	2	3	3	3	3	3	3	4	4	5
Library	CAM	CNC	COTR	DOUG	JI	LC	NI	NL	NW	OC	SEL	VCC	BCIT	CAPU	KPU	UFV	VIU	ECUAD	QUC	RR	TRU	TWU	UNBC	SFU	UVIC	UBC
2001-02	0.78	0.33	1.72	0.92	0.46	0.87	0.53	0.22	0.38	0.67	0.31	2.29	0.55	1.00	0.72	0.91	0.65	0.44		0.25	0.69	0.78		0.17		
2003-04	0.80	0.25	0.86	1.64	0.39	0.92	0.28	0.20	0.37	0.43	0.27	1.95	0.79	0.93	0.65	0.84	0.82	0.38		0.13	0.85	0.81	0.33		0.13	0.08
2005-06	0.70	0.20	0.43	1.33	0.28	0.78	0.30	0.15	0.31	0.27	0.22	1.13	0.34	0.69	0.46	0.77	0.68	0.37		0.15	0.71	0.67	0.21	0.23	0.11	0.30
2007-08	0.56	0.15	0.36	1.10	0.25	0.71	0.33	0.14	0.20	0.26	0.18	0.95	0.33	0.30	0.39	0.56	0.48	0.31	0.09	0.14	0.43	0.35	0.16	0.17	0.10	0.24
2009-10	0.55	0.14	0.12	0.99	0.20	0.65	0.43	0.15	0.13	0.40	0.17	0.55	0.34	0.28	0.30	0.49	0.32	0.24	0.11	0.13	0.47	0.31	0.11	0.15	0.25	0.19

NOTE: Blank cells - Library did not report in this year.

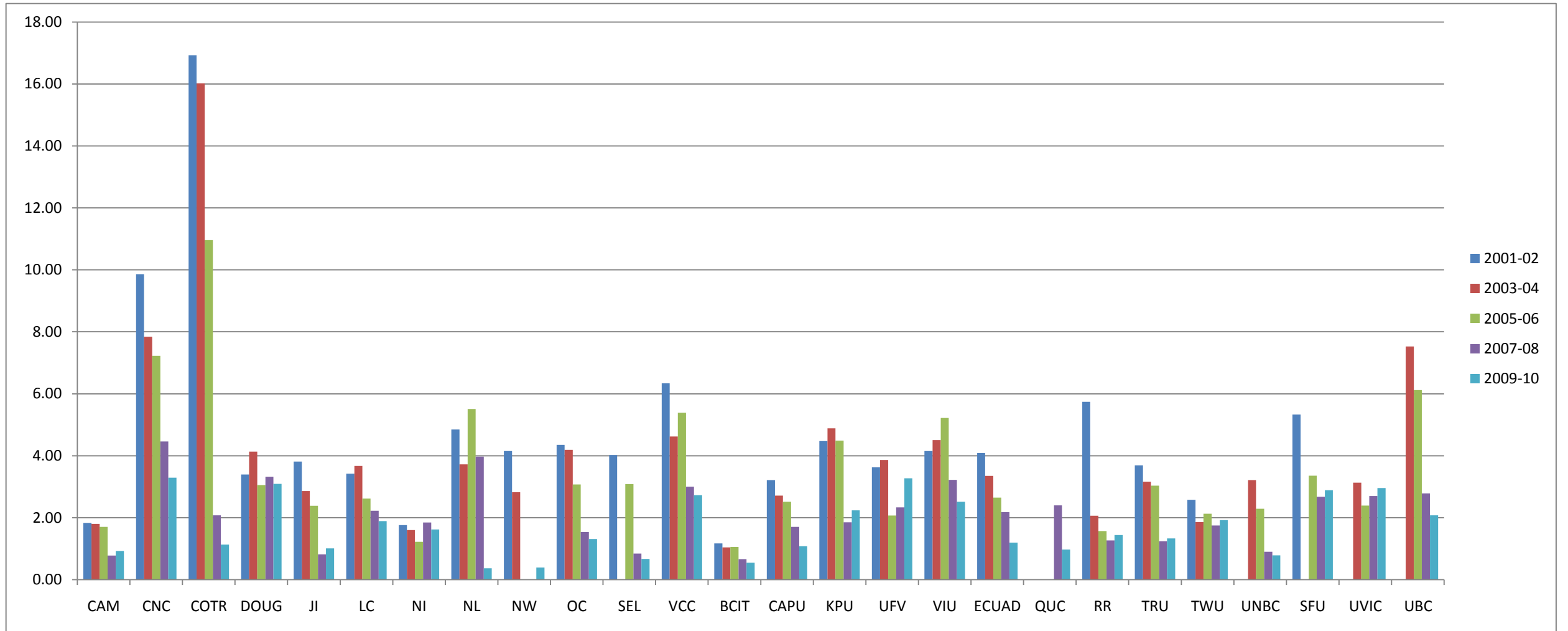
### I) Total Library Expenditures / Direct Circulation



Tier	1	1	1	1	1	1	1	1	1	1	1	1	2	1	2	2	2	2	3	3	3	3	3	3	4	4	5
Library	CAM	CNC	COTR	DOUG	JI	LC	NI	NL	NW	OC	SEL	VCC	BCIT	CAPU	KPU	UFV	VIU	ECIAD	QUC	RR	TRU	TWU	UNBC	SFU	UVIC	UBC	
2001-02	21.45	15.35	2.92	15.72	32.72	18.32	27.07	40.21	21.76	13.78	21.57	11.00	24.09	11.79	26.53	10.72	17.89	7.84		53.96	14.39	6.24		32.20			
2003-04	20.41	19.79	5.14	8.88	39.88	20.20	53.96	46.44	20.36	17.33	25.28	12.48	20.12	8.92	29.68	13.56	12.26	9.47		137.61	11.51	6.60	40.19		21.61	43.51	
2005-06	23.16	25.11	11.16	10.95	57.56	24.63	54.08	62.12	23.52	115.26	32.41	16.87	36.74	12.60	43.15	15.56	15.92	10.46		152.23	14.74	9.38	50.19	30.05	26.87	10.88	
2007-08	32.10	32.94	16.30	14.64	79.63	30.37	45.37	72.83	42.84	80.86	42.29	22.34	47.33	27.90	54.04	21.00	19.60	14.31	*	198.35	23.38	10.16	59.28	30.31	36.05	13.20	
2009-10	35.15	38.41	43.52	15.71	102.54	34.16	36.93	74.80	57.07	50.78	51.31	52.02	48.30	33.56	71.36	25.91	28.27	19.59	276.51	77.11	21.50	n/a	85.51	33.49	40.81	19.02	

NOTES: Blank cells - Library did not report in this year. n/a - TWU total library expenditure amount not available. \* QUC 2007-08: result (\$912.99) was not included in order to make the chart more viewable.

### m) Reference Transactions / FTE Student

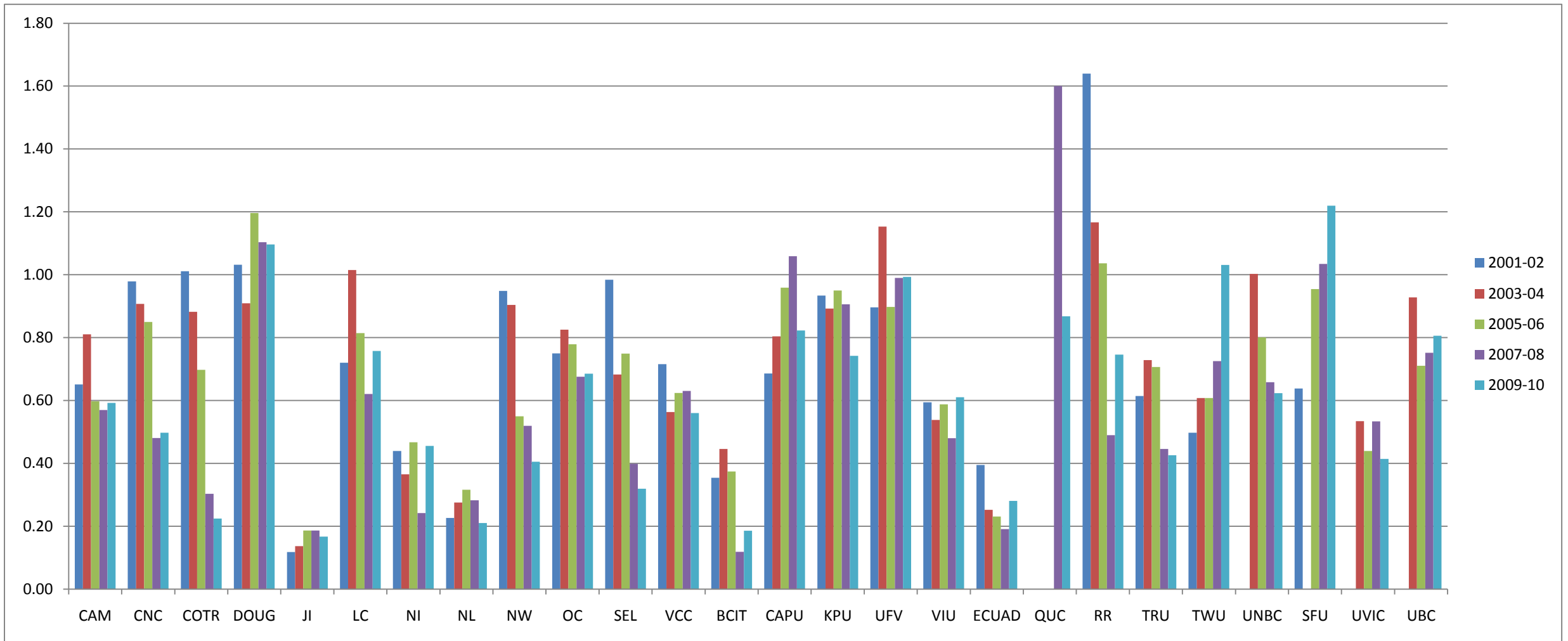


Tier	1	1	1	1	1	1	1	1	1	1	1	1	2	2	2	2	2	3	3	3	3	3	3	4	4	5
Library	CAM	CNC	COTR	DOUG	JI	LC	NI	NL	NW	OC	SEL	VCC	BCIT	CAPU	KPU	UFV	VIU	ECUAD	QUC	RR	TRU	TWU	UNBC	SFU	UVIC	UBC
2001-02	1.83	9.86	16.92	3.39	3.81	3.42	1.76	4.85	4.15	4.35	4.03	6.33	1.17	3.21	4.47	3.62	4.15	4.09		5.74	3.69	2.58		5.33		
2003-04	1.80	7.84	16.02	4.13	2.86	3.67	1.60	3.72	2.82	4.19	N/A	4.62	1.04	2.71	4.89	3.86	4.51	3.35		2.06	3.16	1.86	3.21		3.13	7.53
2005-06	1.70	7.22	10.96	3.05	2.38	2.62	1.22	5.51	N/A	3.08	3.08	5.39	1.06	2.51	4.49	2.07	5.22	2.65		1.57	3.03	2.12	2.29	3.36	2.39	6.12
2007-08	0.78	4.46	2.08	3.32	0.81	2.23	1.85	3.97	N/A	1.54	0.84	3.00	0.66	1.70	1.85	2.33	3.22	2.18	2.40	1.27	1.24	1.75	0.90	2.67	2.70	2.78
2009-10	0.93	3.29	1.13	3.09	1.01	1.89	1.62	0.37	0.39	1.31	0.67	2.73	0.55	1.08	2.24	3.28	2.52	1.20	0.97	1.44	1.33	1.92	0.79	2.89	2.96	2.08

NOTE: Blank cells - Library did not report in this year. N/A - total of Reference Transactions not available.



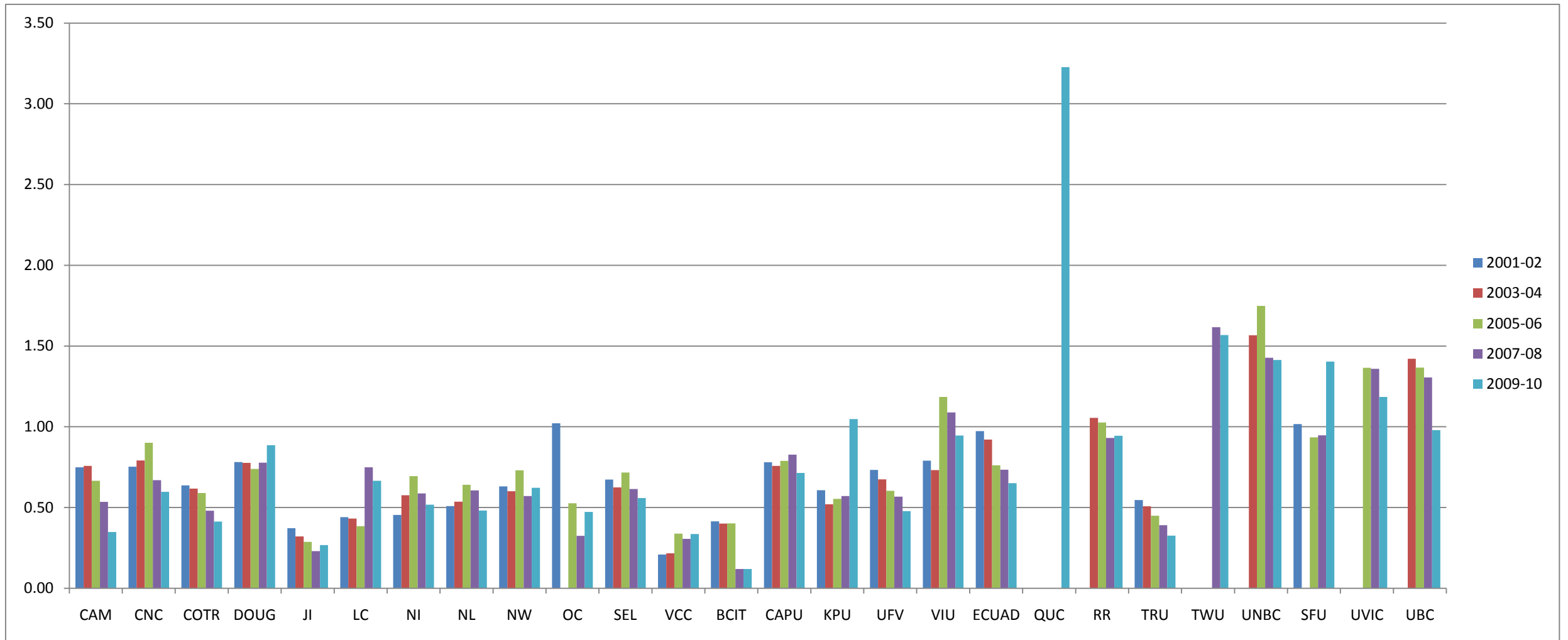
### n) Number of Students Instructed / FTE Student



Tier	1	1	1	1	1	1	1	1	1	1	1	1	2	2	2	2	2	3	3	3	3	3	3	4	4	5
Library	CAM	CNC	COTR	DOUG	JI	LC	NI	NL	NW	OC	SEL	VCC	BCIT	CAPU	KPU	UFV	VIU	ECUAD	QUC	RR	TRU	TWU	UNBC	SFU	UVIC	UBC
2001-02	0.65	0.98	1.01	1.03	0.12	0.72	0.44	0.23	0.95	0.75	0.98	0.72	0.35	0.69	0.93	0.90	0.59	0.40		1.64	0.61	0.50		0.64		
2003-04	0.81	0.91	0.88	0.91	0.14	1.01	0.36	0.28	0.90	0.83	0.68	0.56	0.45	0.80	0.89	1.15	0.54	0.25		1.17	0.73	0.61	1.00		0.53	0.93
2005-06	0.60	0.85	0.70	1.20	0.19	0.81	0.47	0.32	0.55	0.78	0.75	0.62	0.37	0.96	0.95	0.90	0.59	0.23		1.04	0.71	0.61	0.80	0.95	0.44	0.71
2007-08	0.57	0.48	0.30	1.10	0.19	0.62	0.24	0.28	0.52	0.68	0.40	0.63	0.12	1.06	0.91	0.99	0.48	0.19	1.60	0.49	0.45	0.72	0.66	1.03	0.53	0.75
2009-10	0.59	0.50	0.22	1.10	0.17	0.76	0.46	0.21	0.41	0.68	0.32	0.56	0.19	0.82	0.74	0.99	0.61	0.28	0.87	0.75	0.43	1.03	0.62	1.22	0.41	0.81

NOTE: Blank cells - Library did not report in this year.

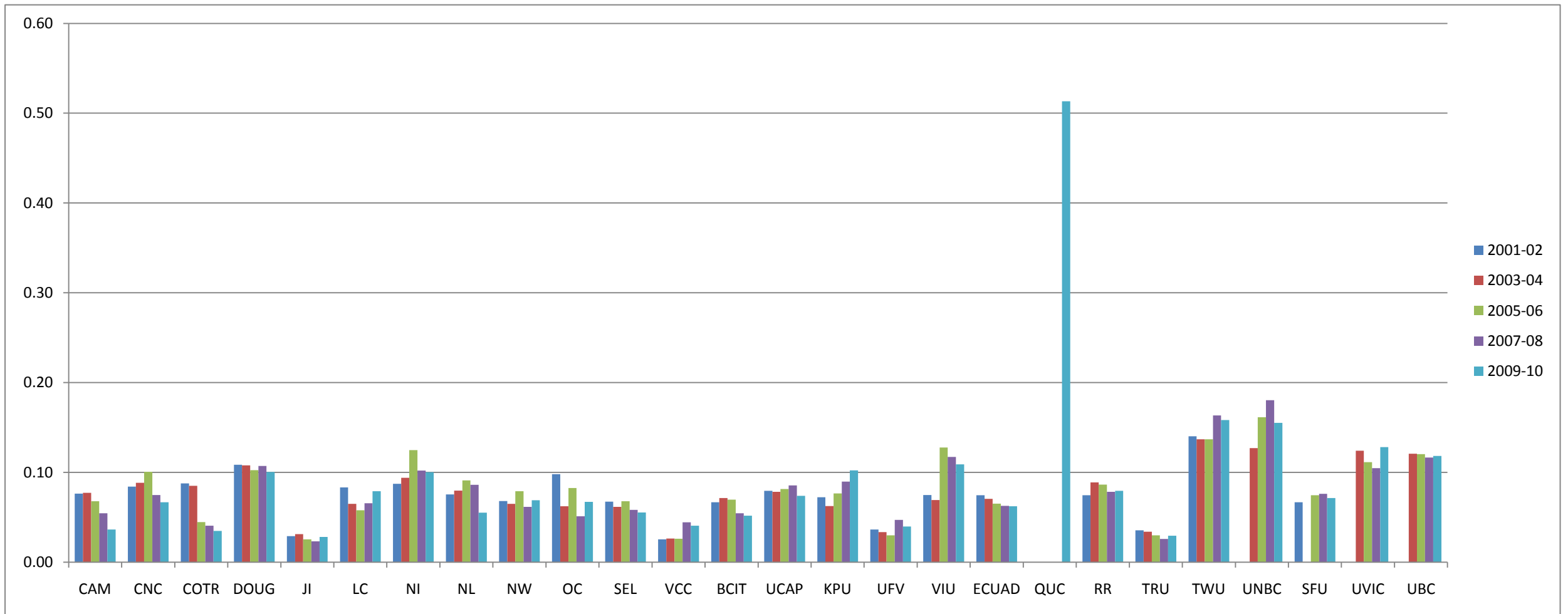
o) Total Library Area (sq. meters) / FTE Student



Tier	1	1	1	1	1	1	1	1	1	1	1	1	2	2	2	2	2	3	3	3	3	3	3	4	4	5
Library	CAM	CNC	COTR	DOUG	JI	LC	NI	NL	NW	OC	SEL	VCC	BCIT	CAPU	KPU	UFV	VIU	ECUAD	QUC	RR	TRU	TWU	UNBC	SFU	UVIC	UBC
2001-02	0.75	0.75	0.64	0.78	0.37	0.44	0.45	0.51	0.63	1.02	0.67	0.21	0.41	0.78	0.61	0.73	0.79	0.97		n/a	0.55	n/a		1.02		
2003-04	0.76	0.79	0.62	0.78	0.32	0.43	0.58	0.54	0.60	n/a	0.62	0.22	0.40	0.76	0.52	0.67	0.73	0.92		1.06	0.51	n/a	1.57		n/a	1.42
2005-06	0.67	0.90	0.59	0.74	0.29	0.38	0.69	0.64	0.73	0.53	0.72	0.34	0.40	0.79	0.55	0.60	1.18	0.76		1.03	0.45	n/a	1.75	0.93	1.37	1.37
2007-08	0.54	0.67	0.48	0.78	0.23	0.75	0.59	0.61	0.57	0.32	0.61	0.31	0.12	0.83	0.57	0.57	1.09	0.73	n/a	0.93	0.39	1.62	1.43	0.95	1.36	1.31
2009-10	0.35	0.60	0.41	0.89	0.27	0.67	0.52	0.48	0.62	0.47	0.56	0.34	0.12	0.71	1.05	0.48	0.95	0.65	3.23	0.94	0.33	1.57	1.41	1.40	1.18	0.98

NOTE: n/a - Total Area data was not available. Blank cells - Library did not report in this year.

p) Number of Seats / FTE Student

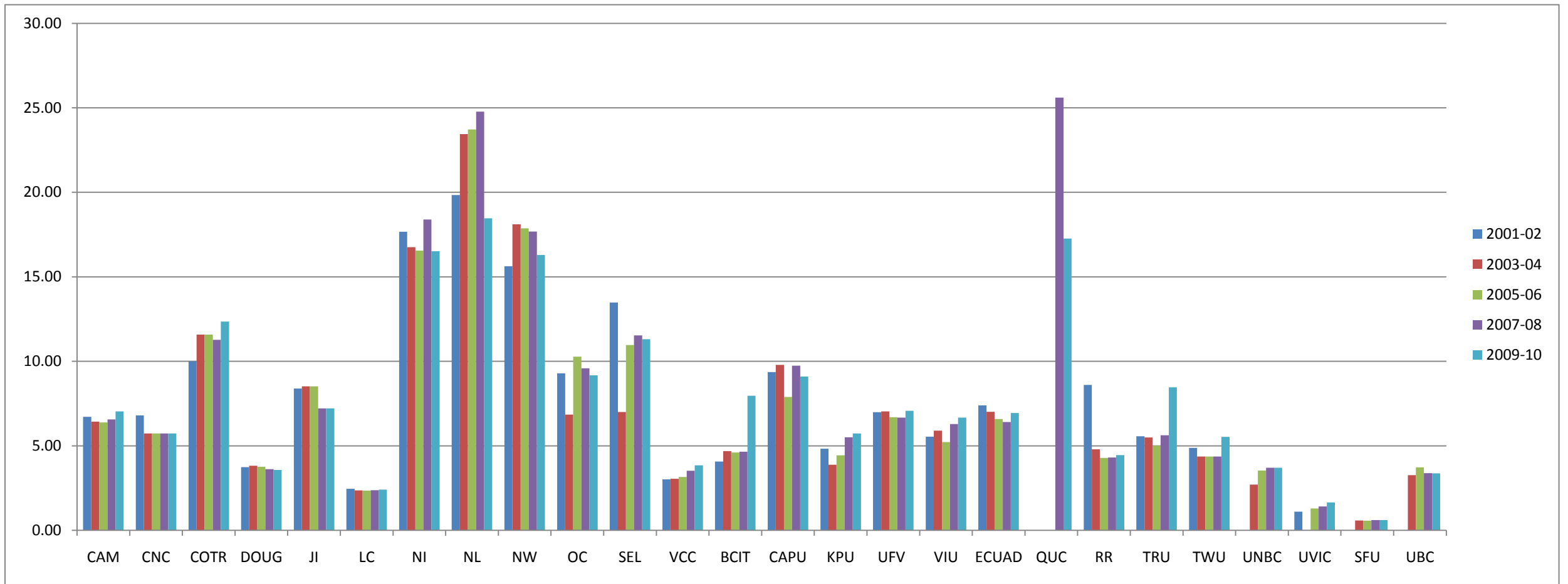


Tier	1	1	1	1	1	1	1	1	1	1	1	1	2	2	2	2	2	3	3	3	3	3	3	4	4	5
Library	CAM	CNC	COTR	DOUG	JI	LC	NI	NL	NW	OC	SEL	VCC	BCIT	UCAP	KPU	UFV	VIU	ECUAD	QUC	RR	TRU	TWU	UNBC	SFU	UVIC	UBC
2001-02	0.08	0.08	0.09	0.11	0.03	0.08	0.09	0.08	0.07	0.10	0.07	0.03	0.07	0.08	0.07	0.04	0.07	0.07		0.07	0.04	0.14		0.07		
2003-04	0.08	0.09	0.09	0.11	0.03	0.06	0.09	0.08	0.06	0.06	0.06	0.03	0.07	0.08	0.06	0.03	0.07	0.07		0.09	0.03	0.14	0.13		0.12	0.12
2005-06	0.07	0.10	0.04	0.10	0.03	0.06	0.12	0.09	0.08	0.08	0.07	0.03	0.07	0.08	0.08	0.03	0.13	0.07		0.09	0.03	0.14	0.16	0.07	0.11	0.12
2007-08	0.05	0.07	0.04	0.11	0.02	0.07	0.10	0.09	0.06	0.05	0.06	0.04	0.05	0.09	0.09	0.05	0.12	0.06	*	0.08	0.03	0.16	0.18	0.08	0.10	0.12
2009-10	0.04	0.07	0.03	0.10	0.03	0.08	0.10	0.06	0.07	0.07	0.06	0.04	0.05	0.07	0.10	0.04	0.11	0.06	0.51	0.08	0.03	0.16	0.16	0.07	0.13	0.12

NOTE: Blank cells - Library did not report in this year.

\* QUC 2007-08 (1.81) result was removed in order to make the chart more viewable.

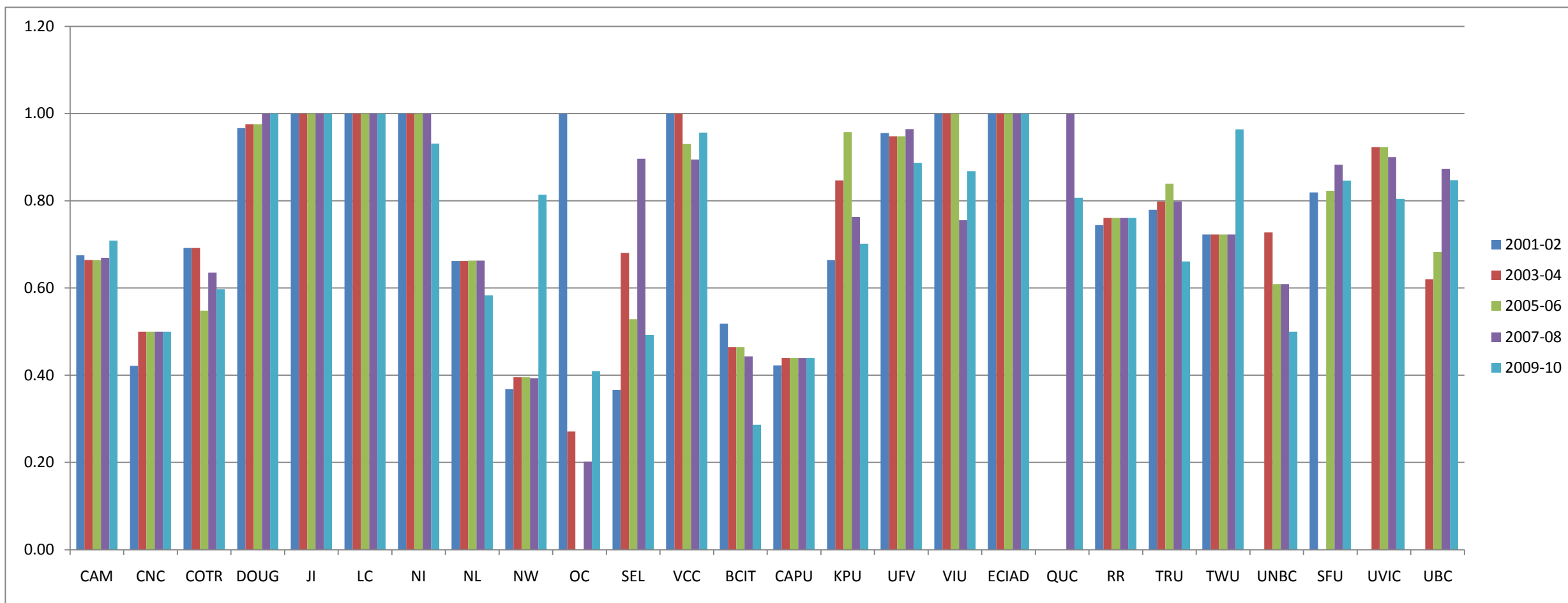
### q) Hours Open / FTE Personnel



Tier	1	1	1	1	1	1	1	1	1	1	1	1	2	2	2	2	2	3	3	3	3	3	3	4	4	5
Library	CAM	CNC	COTR	DOUG	JI	LC	NI	NL	NW	OC	SEL	VCC	BCIT	CAPU	KPU	UFV	VIU	ECUAD	QUC	RR	TRU	TWU	UNBC	UVIC	SFU	UBC
2001-02	6.72	6.80	10.00	3.75	8.39	2.46	17.67	19.84	15.63	9.29	13.48	3.02	4.08	9.36	4.83	6.99	5.54	7.39		8.60	5.57	4.88		1.11		
2003-04	6.43	5.74	11.59	3.82	8.52	2.36	16.75	23.45	18.11	6.84	7.00	3.06	4.69	9.79	3.88	7.04	5.90	7.01		4.79	5.49	4.37	2.71		0.59	3.27
2005-06	6.38	5.74	11.59	3.76	8.52	2.35	16.55	23.71	17.87	10.28	10.97	3.16	4.61	7.89	4.44	6.69	5.22	6.59		4.29	5.01	4.37	3.54	1.30	0.58	3.73
2007-08	6.56	5.74	11.28	3.63	7.22	2.38	18.39	24.78	17.68	9.60	11.53	3.53	4.66	9.74	5.51	6.68	6.29	6.41	25.60	4.31	5.63	4.37	3.71	1.41	0.61	3.39
2009-10	7.04	5.74	12.35	3.58	7.22	2.42	16.52	18.46	16.29	9.17	11.31	3.85	7.97	9.10	5.73	7.08	6.68	6.95	17.26	4.45	8.46	5.53	3.71	1.65	0.62	3.37

NOTE: Blank cells - Library did not report in this year.

### r) Reference Hours / Total Hours Open



Tier	1	1	1	1	1	1	1	1	1	1	1	1	2	1	2	2	2	3	3	3	3	3	3	4	4	5
Library	CAM	CNC	COTR	DOUG	JI	LC	NI	NL	NW	OC	SEL	VCC	BCIT	CAPU	KPU	UFV	VIU	ECIAD	QUC	RR	TRU	TWU	UNBC	SFU	UVIC	UBC
2001-02	0.68	0.42	0.69	0.97	1.00	1.00	1.00	0.66	0.37	1.00	0.37	1.00	0.52	0.42	0.66	0.96	1.00	1.00		0.74	0.78	0.72		0.82		
2003-04	0.66	0.50	0.69	0.98	1.00	1.00	1.00	0.66	0.40	0.27	0.68	1.00	0.46	0.44	0.85	0.95	1.00	1.00		0.76	0.80	0.72	0.73		0.92	0.62
2005-06	0.66	0.50	0.55	0.98	1.00	1.00	1.00	0.66	0.40	*	0.53	0.93	0.46	0.44	0.96	0.95	1.00	1.00		0.76	0.84	0.72	0.61	0.82	0.92	0.68
2007-08	0.67	0.50	0.64	1.00	1.00	1.00	1.00	0.66	0.39	0.20	0.90	0.89	0.44	0.44	0.76	0.96	0.76	1.00	1.00	0.76	0.80	0.72	0.61	0.88	0.90	0.87
2009-10	0.71	0.50	0.60	1.00	1.00	1.00	0.93	0.58	0.81	0.41	0.49	0.96	0.29	0.44	0.70	0.89	0.87	1.00	0.81	0.76	0.66	0.96	0.50	0.85	0.80	0.85

NOTE: Blank cells - Library did not report in this year. \* OC - Reference hours not provided in this year.