

# **CPSLD STATISTICS: 2003-2012**

Report data compiled by:  
B. C. Institute of Technology  
Library  
March 2013

## ACKNOWLEDGEMENTS

I would like to thank Vancouver Community College's , Corinna Luk for electronically sending us the CPSLD comprehensive files containing the CPSLD Annual Report data from the 2003/04 through to the 2011/12 years.

I would like to thank my Director, David Pepper for his direction and assistance.

Deidre Lowe  
 Serials Assistant, Library  
 B. C. Institute of Technology

### **BC ELN Partner Library Tier Model for Database Licensing**

The effective date of the tiers below is September 1st, 2010 - August 31st, 2011.

<b>Tier 1 (Colleges with predominantly 2-year programs)</b>
<b>Tier 1 A (Colleges with predominantly 2-year programs up to 2,000 FTE)</b>
Alexander College College of the Rockies Columbia Bible College Columbia College Nicola Valley Institute of Technology Northern Lights College Northwest Community College Yukon College
<b>Tier 1 B (Colleges with predominantly 2-year programs 2,001 - 4,000 FTE)</b>
College of New Caledonia Justice Institute of BC North Island College Selkirk College
<b>Tier 1 C (Colleges with predominantly 2-year programs 4,001 + FTE)</b>
Camosun College Douglas College Langara College Okanagan College Vancouver Community College
<b>Tier 2 (Regional Universities and Institutes with 4-year programs)</b>
British Columbia Institute of Technology Capilano University Kwantlen Polytechnic University University of the Fraser Valley Vancouver Island University
<b>Tier 3 (Small Universities)</b>
Emily Carr University of Art + Design Quest University Canada Royal Roads University Thompson Rivers University Trinity Western University University Canada West University of Northern British Columbia
<b>Tier 4 (Medium Universities)</b>
Simon Fraser University University of Victoria
<b>Tier 5 (Large Universities)</b>
University of British Columbia

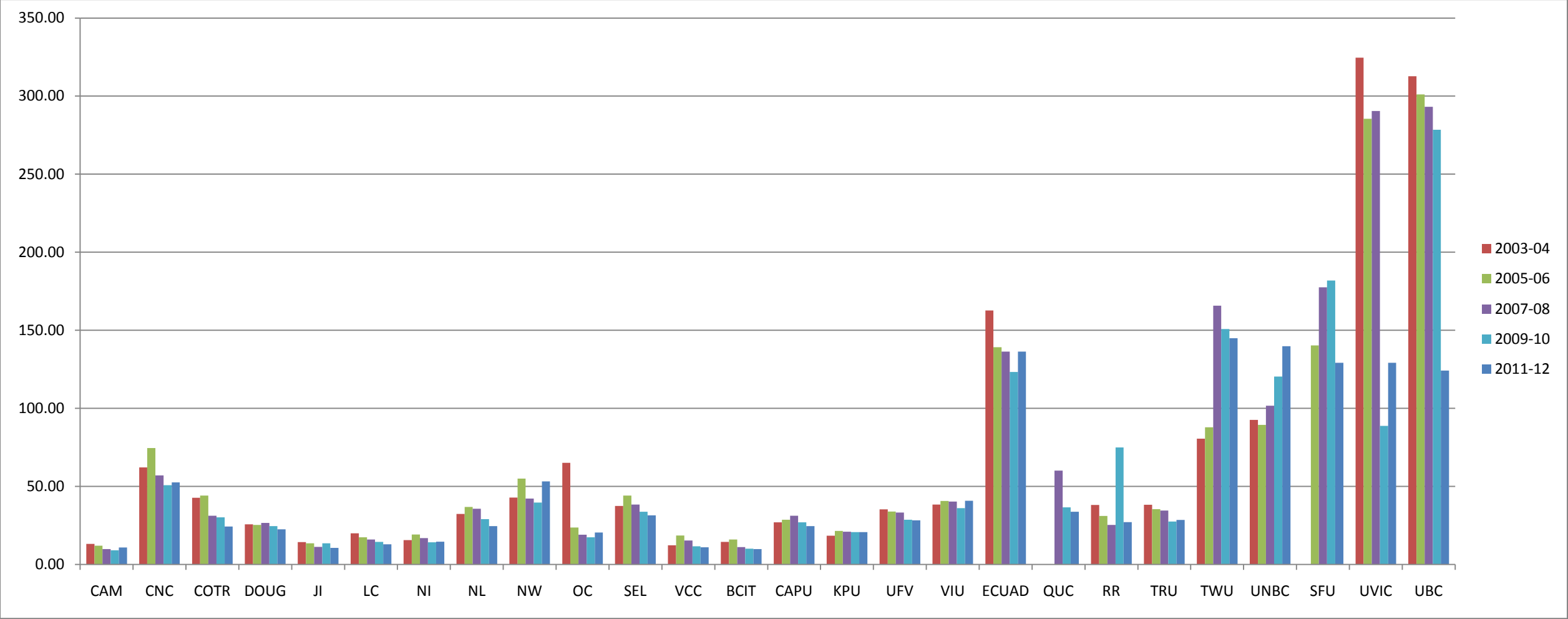
#### **NOTES**

- The five Library Tiers information was taken from the BC ELN webpage 'BC ELN Partner Library Tier Model for Database Licensing'.
- Not all the libraries listed above provide statistics to the CPSLD.
- Rather than using all ten years of data, we used every second year so that the data could be contained in one chart. The 2004-05, 2006-07, 2008-09 and 2010-11 academic years were not used.

## LEGEND

BCIT	British Columbia Institute of Technology
CAM	Camosun College
CAPU	Capilano University
CNC	College of New Caledonia
COTR	College of the Rockies
DOUG	Douglas College
ECUAD	Emily Carr University of Art + Design – formerly ECIAD
JI	Justice Institute of B.C.
KPU	Kwantlen Polytechnic University – formerly KW
LC	Langara College
NI	North Island College
NL	Northern Lights College
NW	Northwest Community College
OC	Okanagan College
QUC	Quest University Canada
RR	Royal Roads University
SEL	Selkirk College
SFU	Simon Fraser University
TRU	Thompson Rivers University – formerly UCC
TWU	Trinity Western University
UBC	University of British Columbia
UFV	University of the Fraser Valley – formerly UCFV
UNBC	University of Northern British Columbia
UVIC	University of Victoria
VCC	Vancouver Community College
VIU	Vancouver Island University – formerly MAL

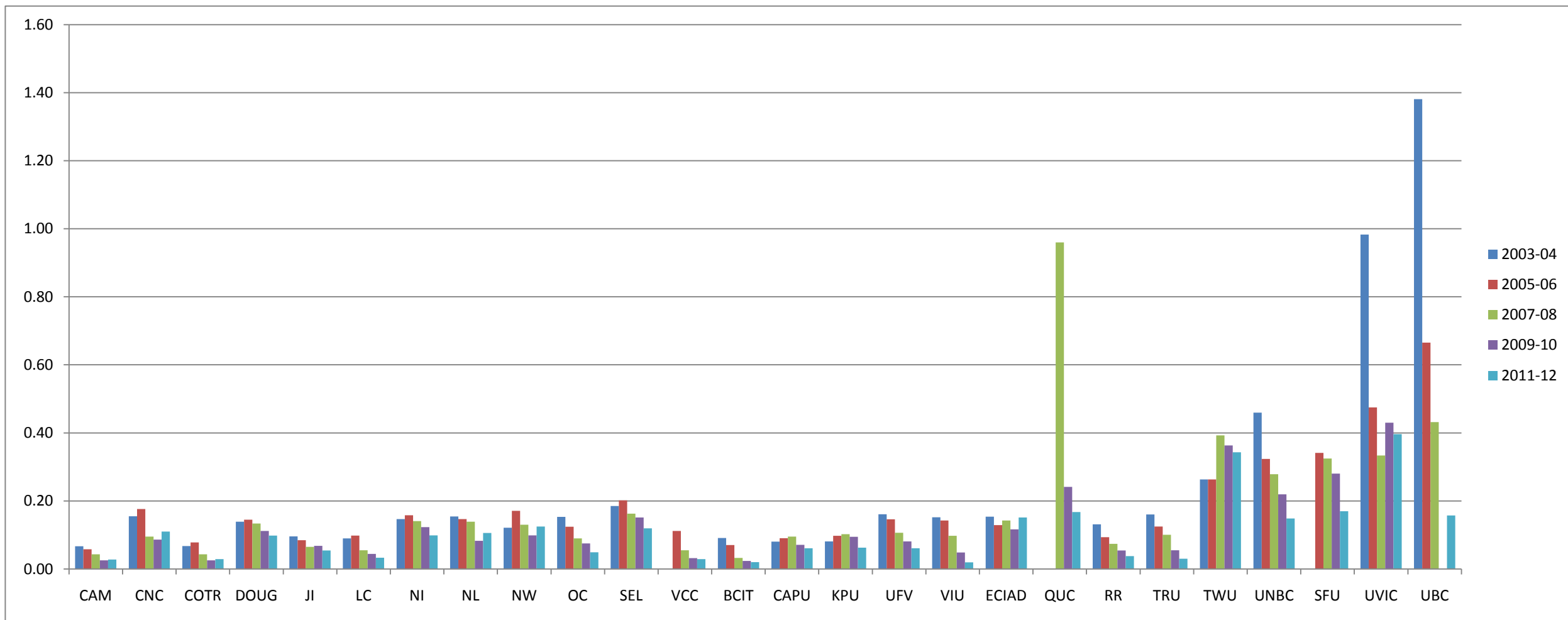
a) Volumes per FTE Student



Library	CAM	CNC	COTR	DOUG	JI	LC	NI	NL	NW	OC	SEL	VCC	BCIT	CAPU	KPU	UFV	VIU	ECUAD	QUC	RR	TRU	TWU	UNBC	SFU	UVIC	UBC
2003-04	13.20	62.24	42.80	25.78	14.36	19.95	15.69	32.39	42.82	65.17	37.55	12.30	14.45	26.98	18.42	35.31	38.37	162.67		38.12	38.30	80.57	92.65		324.65	312.68
2005-06	12.01	74.62	44.12	25.33	13.55	17.49	19.22	36.90	55.03	23.66	44.21	18.58	15.98	28.71	21.54	33.96	40.73	139.20		31.06	35.42	87.86	89.45	140.29	285.46	301.11
2007-08	9.89	57.14	31.23	26.62	11.30	16.05	16.94	35.77	42.23	19.10	38.44	15.33	11.22	31.28	21.02	33.31	40.36	136.32	60.12	25.34	34.59	165.84	101.76	177.49	290.41	293.10
2009-10	9.13	50.87	30.27	24.61	13.61	14.53	14.25	29.02	39.67	17.43	33.80	11.62	10.10	27.08	20.72	28.72	36.12	123.33	36.57	75.04	27.52	150.85	120.33	181.87	88.80	278.46
2011-12	10.89	52.64	24.28	22.58	10.64	13.00	14.67	24.58	53.22	20.45	31.50	11.01	9.84	24.60	20.70	28.27	40.81	136.34	33.83	27.16	28.54	144.93	139.84	129.16	129.23	124.17

NOTE: Blank cell - Library did not report in this year.

### b) Physical Subscriptions per FTE Student

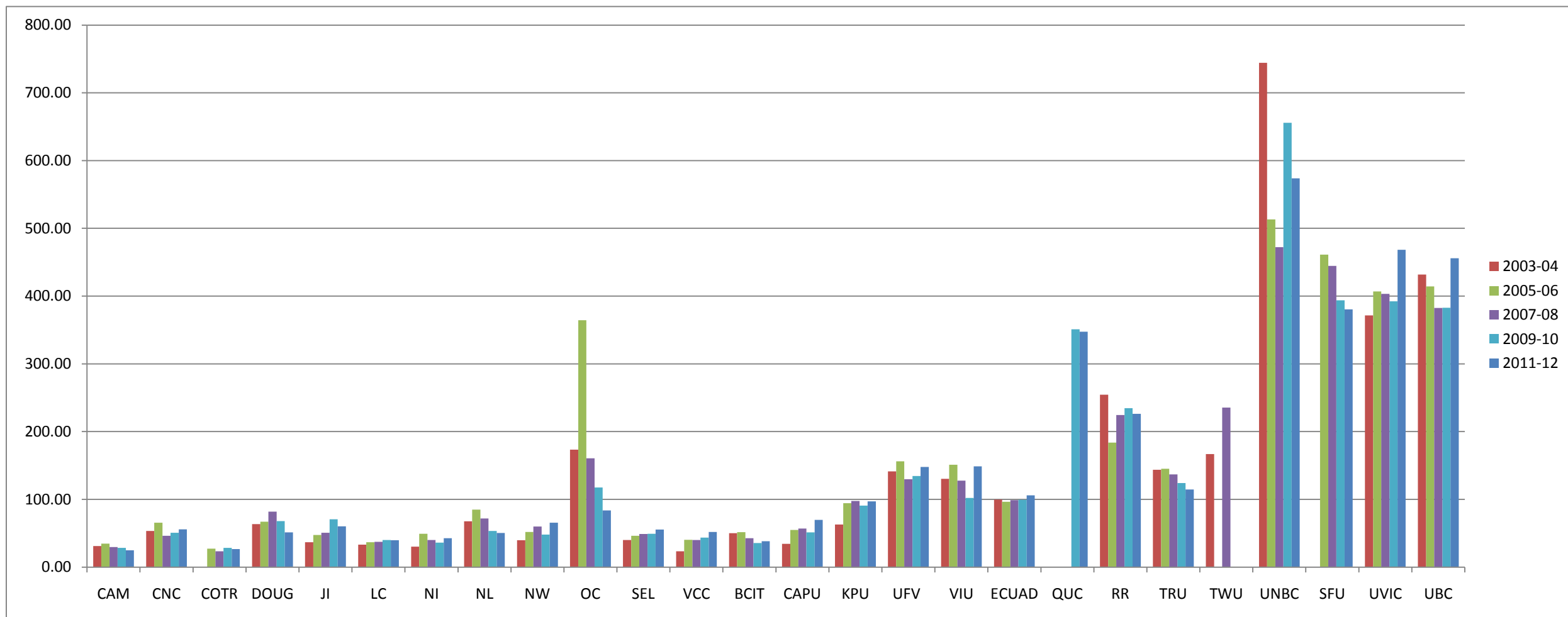


Tier	1	1	1	1	1	1	1	1	1	1	1	1	2	2	2	2	2	3	3	3	3	3	3	4	4	5
Library	CAM	CNC	COTR	DOUG	JI	LC	NI	NL	NW	OC	SEL	VCC	BCIT	CAPU	KPU	UFV	VIU	ECIAD	QUC	RR	TRU	TWU	UNBC	SFU	UVIC	UBC
2003-04	0.07	0.15	0.07	0.14	0.10	0.09	0.15	0.15	0.12	0.15	0.18		0.09	0.08	0.08	0.16	0.15	0.15		0.13	0.16	0.26	0.46		0.98	1.38
2005-06	0.06	0.18	0.08	0.15	0.08	0.10	0.16	0.15	0.17	0.12	0.20	0.11	0.07	0.09	0.10	0.15	0.14	0.13		0.09	0.12	0.26	0.32	0.34	0.48	0.67
2007-08	0.04	0.10	0.04	0.13	0.06	0.05	0.14	0.14	0.13	0.09	0.16	0.05	0.03	0.10	0.10	0.11	0.10	0.14	0.96	0.07	0.10	0.39	0.28	0.32	0.33	0.43
2009-10	0.03	0.09	0.03	0.11	0.07	0.04	0.12	0.08	0.10	0.08	0.15	0.03	0.02	0.07	0.09	0.08	0.05	0.12	0.24	0.05	0.06	0.36	0.22	0.28	0.43	*
2011-12	0.03	0.11	0.03	0.10	0.05	0.03	0.10	0.11	0.13	0.05	0.12	0.03	0.02	0.06	0.06	0.06	0.02	0.15	0.17	0.04	0.03	0.34	0.15	0.17	0.40	0.16

NOTE: Blank cell - Library did not report in this year or data was not available.

\* To make the chart more viewable, UBC's 2009-10 result (2.31/FTE) was omitted.

### c) Collection Expenditures per FTE Student



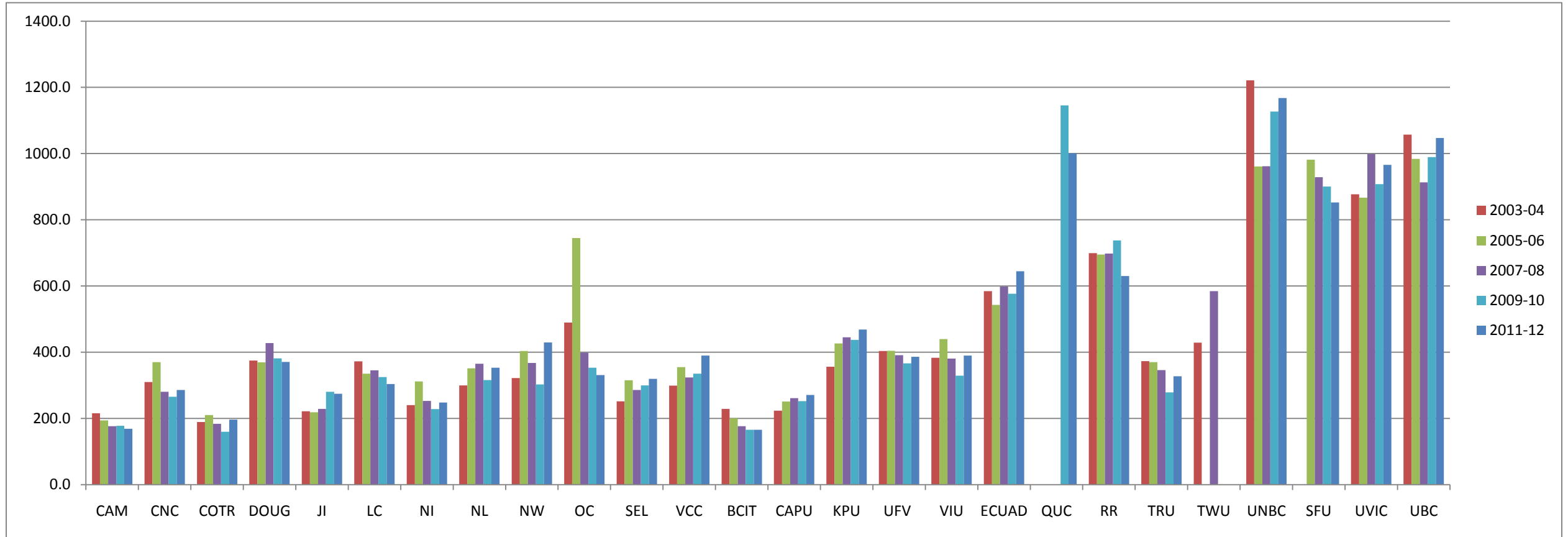
Tier	1	1	1	1	1	1	1	1	1	1	1	1	2	2	2	2	2	3	3	3	3	3	3	4	4	5
Library	CAM	CNC	COTR	DOUG	JI	LC	NI	NL	NW	OC	SEL	VCC	BCIT	CAPU	KPU	UFV	VIU	ECUAD	QUC	RR	TRU	TWU	UNBC	SFU	UVIC	UBC
2003-04	31.14	53.33	*	63.45	36.73	33.12	30.12	67.54	39.55	173.33	40.11	23.33	50.12	34.35	62.89	141.27	130.14	99.82		254.36	143.75	166.90	744.25		371.43	431.79
2005-06	34.75	65.50	27.14	67.06	47.30	36.59	49.19	84.78	51.86	364.51	46.28	40.22	51.47	54.97	94.31	156.12	151.14	96.52		183.83	145.01	*	513.05	461.26	406.90	414.27
2007-08	29.48	46.14	23.44	82.00	50.81	37.38	40.06	71.83	59.80	160.57	48.82	39.99	42.66	56.93	97.59	129.70	127.53	98.85	note	224.45	136.83	235.35	472.16	444.63	403.41	382.60
2009-10	28.42	50.54	28.24	67.77	70.53	39.89	36.24	53.47	48.00	117.65	49.20	43.44	35.55	51.31	90.70	134.51	102.07	99.46	350.94	234.44	124.00	*	655.83	393.81	392.18	382.69
2011-12	24.96	55.85	26.54	51.24	60.31	39.83	42.57	50.38	65.59	83.55	55.34	51.89	38.25	69.70	97.06	147.95	148.56	105.95	347.50	226.26	114.66	*	573.74	380.50	468.28	456.00

Blank cell - Library did not report in this year.

\* Total Collection Budget data not available.

NOTE: QUC 2007-08 result was omitted to make other results viewable. (\$2,573.33/FTE)

### d) Library Expenditures per FTE Student

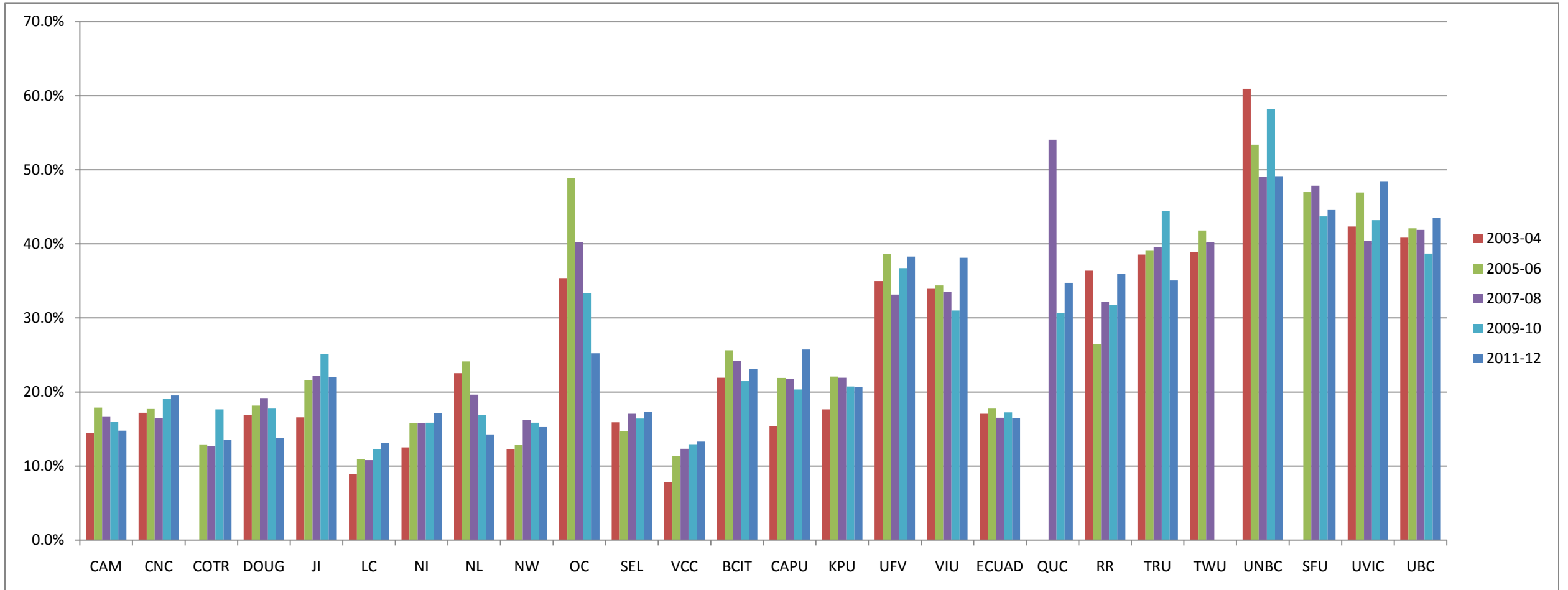


Tier	1	1	1	1	1	1	1	1	1	1	1	1	2	2	2	2	2	3	3	3	3	3	3	4	4	5
Library	CAM	CNC	COTR	DOUG	JI	LC	NI	NL	NW	OC	SEL	VCC	BCIT	CAPU	KPU	UFV	VIU	ECUAD	QUC	RR	TRU	TWU	UNBC	SFU	UVIC	UBC
2003-04	215.9	310.2	189.3	375.1	221.6	372.3	240.4	299.7	322.0	489.7	252.0	299.0	228.7	223.7	356.5	403.8	383.6	584.6		699.4	372.8	429.2	1221.3		877.3	1057.0
2005-06	194.1	370.1	210.0	369.4	218.9	335.5	311.7	351.4	403.8	745.0	315.3	355.0	200.9	251.0	426.8	404.4	439.6	543.1		695.1	370.3		961.1	981.4	867.1	984.1
2007-08	176.5	280.6	184.0	427.6	228.7	345.7	253.2	365.5	367.6	398.7	285.9	324.0	176.5	261.2	445.3	391.3	380.8	598.3	note	697.9	345.8	584.3	961.9	929.0	999.3	913.4
2009-10	177.6	265.4	159.9	381.6	280.5	324.8	228.6	316.0	302.6	353.0	299.7	335.3	165.6	252.3	437.4	366.3	329.3	577.0	1145.7	738.0	278.9		1126.8	900.7	907.5	989.3
2011-12	168.9	285.7	196.4	370.9	274.3	304.2	248.1	353.1	429.8	331.2	319.7	390.1	165.6	270.7	468.6	386.5	389.7	644.8	1000.7	630.1	327.1	0.0	1167.7	852.2	966.0	1047.2

Blank cell - Library did not report in this year.

NOTE: removed QUC's 2007-08 result (\$4,759.71/FTE) to make the other results viewable.

e) Collection Expenditures as % of Library Expenditures



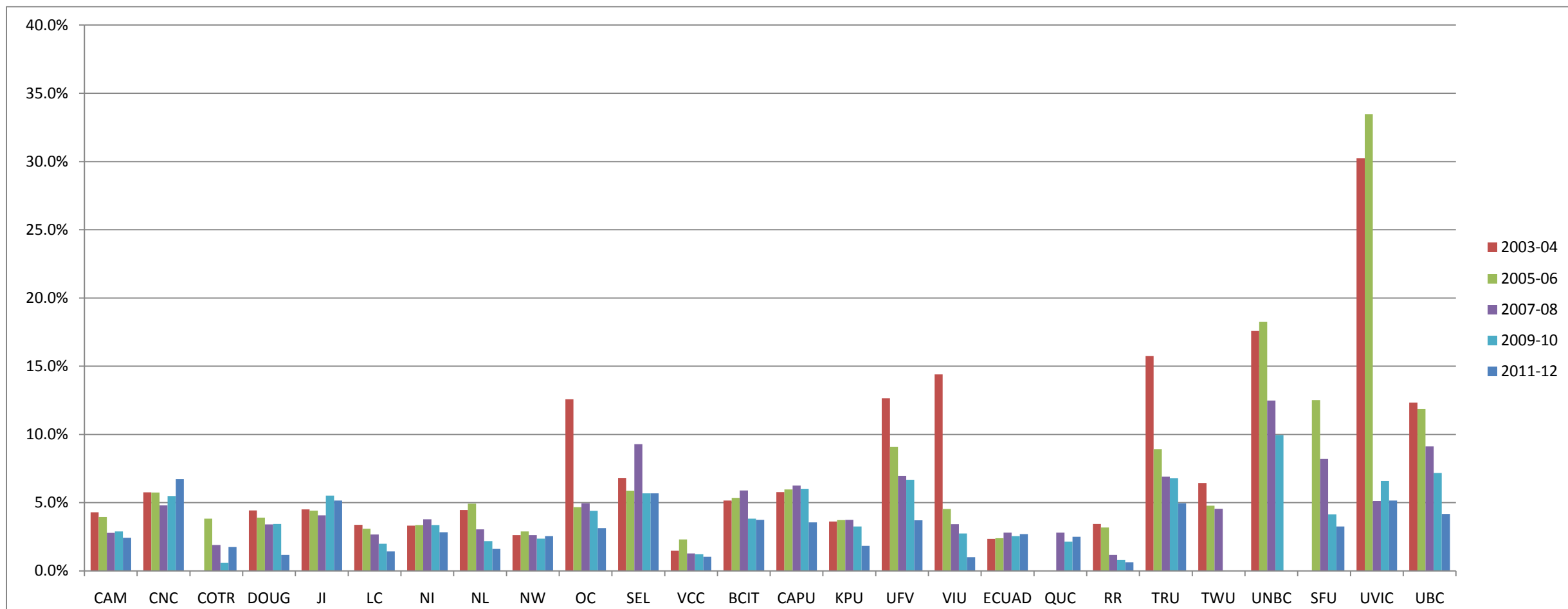
Tier	1	1	1	1	1	1	1	1	1	1	1	1	2	2	2	2	2	2	3	3	3	3	3	3	4	4	5
Library	CAM	CNC	COTR	DOUG	JI	LC	NI	NL	NW	OC	SEL	VCC	BCIT	CAPU	KPU	UFV	VIU	ECUAD	QUC	RR	TRU	TWU	UNBC	SFU	UVIC	UBC	
2003-04	14.4%	17.2%	*	16.9%	16.6%	8.9%	12.5%	22.5%	12.3%	35.4%	15.9%	7.8%	21.9%	15.4%	17.6%	35.0%	33.9%	17.1%		36.4%	38.6%	38.9%	60.9%		42.3%	40.9%	
2005-06	17.9%	17.7%	12.9%	18.2%	21.6%	10.9%	15.8%	24.1%	12.8%	48.9%	14.7%	11.3%	25.6%	21.9%	22.1%	38.6%	34.4%	17.8%		26.4%	39.2%	41.8%	53.4%	47.0%	46.9%	42.1%	
2007-08	16.7%	16.4%	12.7%	19.2%	22.2%	10.8%	15.8%	19.7%	16.3%	40.3%	17.1%	12.3%	24.2%	21.8%	21.9%	33.1%	33.5%	16.5%	54.1%	32.2%	39.6%	40.3%	49.1%	47.9%	40.4%	41.9%	
2009-10	16.0%	19.0%	17.7%	17.8%	25.1%	12.3%	15.9%	16.9%	15.9%	33.3%	16.4%	13.0%	21.5%	20.3%	20.7%	36.7%	31.0%	17.2%	30.6%	31.8%	44.5%	*	58.2%	43.7%	43.2%	38.7%	
2011-12	14.8%	19.5%	13.5%	13.8%	22.0%	13.1%	17.2%	14.3%	15.3%	25.2%	17.3%	13.3%	23.1%	25.8%	20.7%	38.3%	38.1%	16.4%	34.7%	35.9%	35.0%	*	49.1%	44.6%	48.5%	43.5%	

NOTES: Blank cell - Library did not report in this year.

\* Total Collection Expenditure amount not available



### f) Physical Periodicals as % of Library Expenditures



Tier	1	1	1	1	1	1	1	1	1	1	1	1	2	2	2	2	2	3	3	3	3	3	3	4	4	5
Library	CAM	CNC	COTR	DOUG	JI	LC	NI	NL	NW	OC	SEL	VCC	BCIT	CAPU	KPU	UFV	VIU	ECUAD	QUC	RR	TRU	TWU	UNBC	SFU	UVIC	UBC
2003-04	4.3%	5.8%	0.0%	4.4%	4.5%	3.4%	3.3%	4.5%	2.6%	12.6%	6.8%	1.5%	5.2%	5.8%	3.6%	12.7%	14.4%	2.4%		3.4%	15.7%	6.4%	17.6%		30.2%	12.3%
2005-06	3.9%	5.7%	3.8%	3.9%	4.4%	3.1%	3.4%	4.9%	2.9%	4.7%	5.9%	2.3%	5.3%	6.0%	3.7%	9.1%	4.5%	2.4%		3.2%	8.9%	4.8%	18.3%	12.5%	33.5%	11.9%
2007-08	2.8%	4.8%	1.9%	3.4%	4.1%	2.7%	3.8%	3.1%	2.6%	5.0%	9.3%	1.3%	5.9%	6.3%	3.7%	7.0%	3.4%	2.8%	2.8%	1.2%	6.9%	4.5%	12.5%	8.2%	5.1%	9.1%
2009-10	2.9%	5.5%	0.6%	3.4%	5.5%	2.0%	3.4%	2.2%	2.4%	4.4%	5.7%	1.2%	3.8%	6.0%	3.3%	6.7%	2.7%	2.6%	2.1%	0.8%	6.8%	N/A	10.0%	4.1%	6.6%	7.2%
2011-12	2.4%	6.7%	1.7%	1.2%	5.2%	1.4%	2.8%	1.6%	2.5%	3.1%	5.7%	1.0%	3.7%	3.6%	1.8%	3.7%	1.0%	2.7%	2.5%	0.6%	5.0%	N/A	note	3.3%	5.2%	4.2%

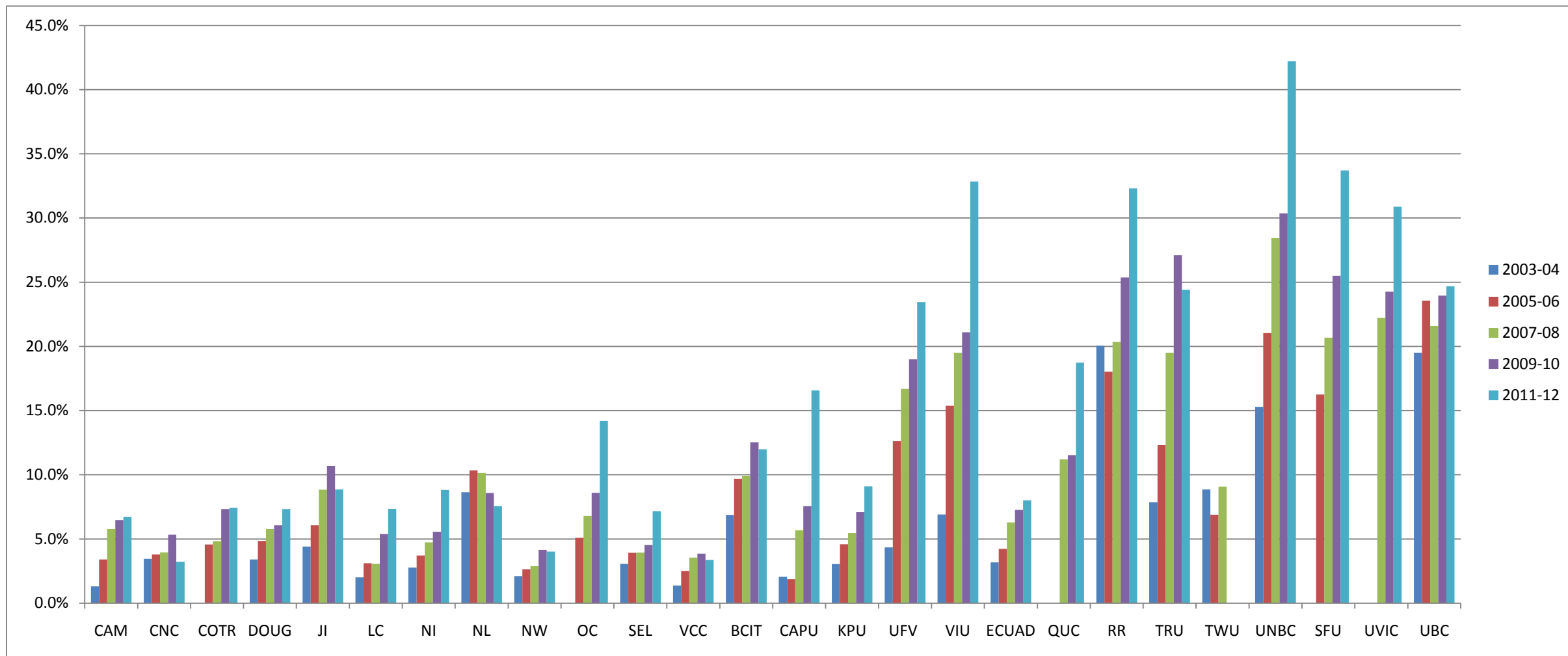
N/A - Print Periodicals total was not available.

Blank cells - Library did not report in this year.

note: Removed UNBC's 2011-12 result (negative 4.09 %) as it seemed unusual.

UVIC's 2003-04 & 2005-06 amounts included electronic subscriptions.

### g) Electronic Services as % of Library Expenditures

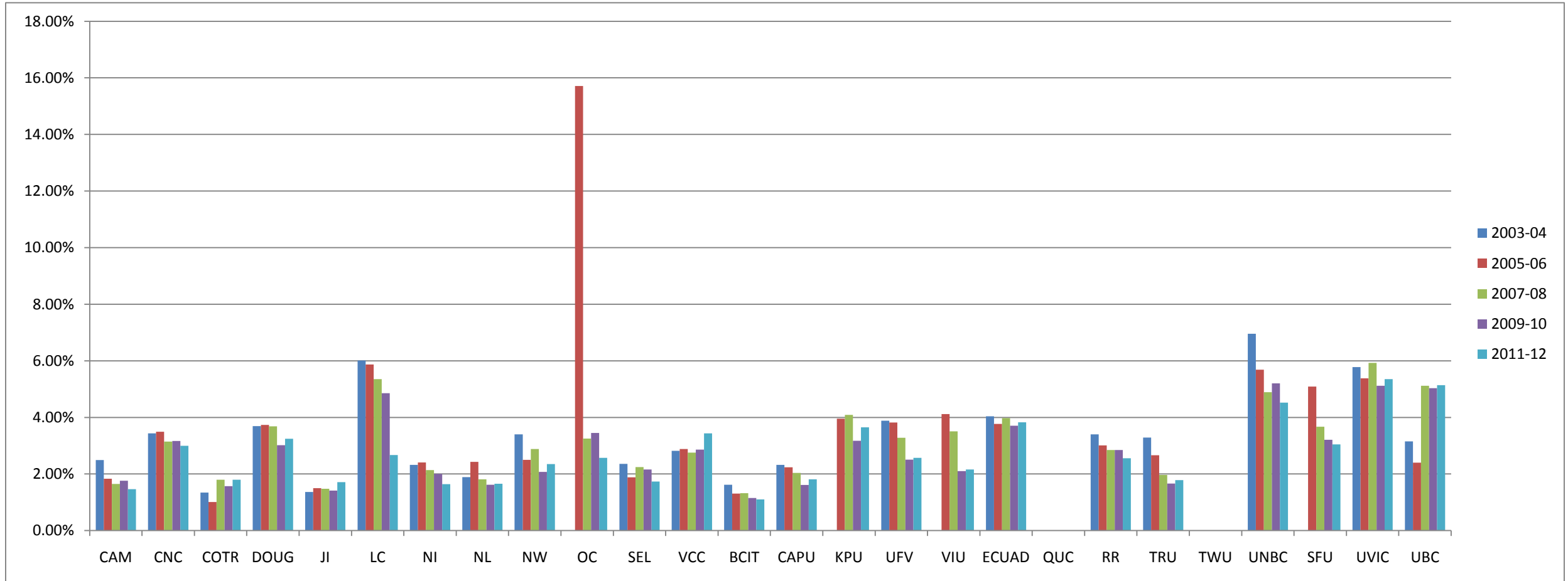


Tier	1	1	1	1	1	1	1	1	1	1	1	1	2	2	2	2	2	3	3	3	3	3	3	4	4	5
Library	CAM	CNC	COTR	DOUG	JI	LC	NI	NL	NW	OC	SEL	VCC	BCIT	CAPU	KPU	UFV	VIU	ECUAD	QUC	RR	TRU	TWU	UNBC	SFU	UVIC	UBC
2003-04	1.3%	3.5%	*	3.4%	4.4%	2.0%	2.8%	8.6%	2.1%	*	3.1%	1.4%	6.9%	2.1%	3.0%	4.3%	6.9%	3.2%		20.1%	7.9%	8.8%	15.3%		*	19.5%
2005-06	3.4%	3.8%	4.6%	4.8%	6.1%	3.1%	3.7%	10.3%	2.6%	5.1%	3.9%	2.5%	9.7%	1.9%	4.6%	12.6%	15.4%	4.2%		18.0%	12.3%	6.9%	21.0%	16.3%	*	23.6%
2007-08	5.8%	3.9%	4.8%	5.8%	8.8%	3.1%	4.7%	10.1%	2.9%	6.8%	3.9%	3.6%	9.9%	5.7%	5.5%	16.7%	19.5%	6.3%	11.2%	20.3%	19.5%	9.1%	28.4%	20.7%	22.2%	21.6%
2009-10	6.5%	5.3%	7.3%	6.1%	10.7%	5.4%	5.6%	8.6%	4.1%	8.6%	4.5%	3.9%	12.5%	7.5%	7.1%	19.0%	21.1%	7.3%	11.5%	25.4%	27.1%	*	30.4%	25.5%	24.3%	23.9%
2011-12	6.7%	3.2%	7.4%	7.3%	8.8%	7.3%	8.8%	7.6%	4.0%	14.2%	7.2%	3.4%	12.0%	16.6%	9.1%	23.5%	32.8%	8.0%	18.7%	32.3%	24.4%	*	42.2%	33.7%	30.9%	24.7%

NOTES: Blank cells - Library did not report in this year.

\* Expenditure amounts not available.

### h) Library Expenditures as % of Institutional Budget.

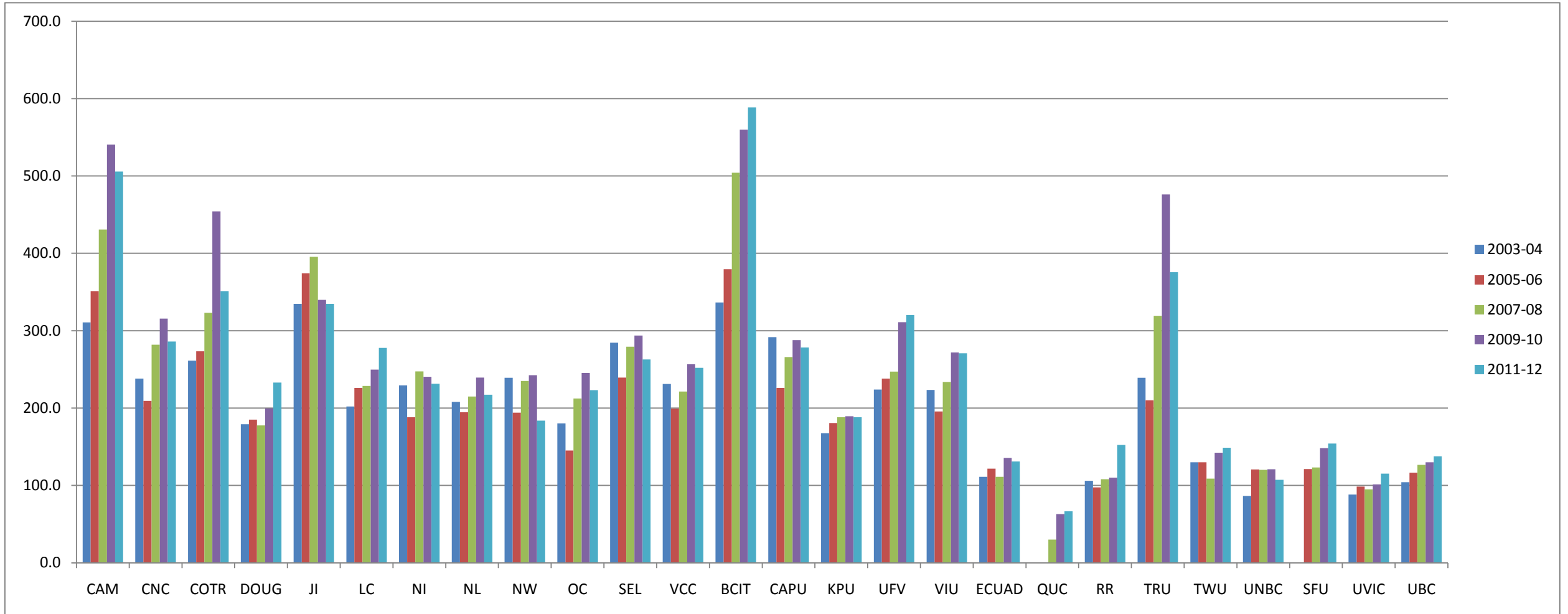


Tier	1	1	1	1	1	1	1	1	1	1	1	1	2	2	2	2	2	3	3	3	3	3	3	4	4	5
Library	CAM	CNC	COTR	DOUG	JI	LC	NI	NL	NW	OC	SEL	VCC	BCIT	CAPU	KPU	UFV	VIU	ECUAD	QUC	RR	TRU	TWU	UNBC	SFU	UVIC	UBC
<b>2003-04</b>	2.50%	3.44%	1.34%	3.69%	1.36%	6.01%	2.32%	1.89%	3.40%	*	2.36%	2.82%	1.62%	2.32%	0.00%	3.88%	0.00%	4.04%		3.40%	3.29%	*	6.96%		5.78%	3.15%
<b>2005-06</b>	1.83%	3.49%	1.01%	3.73%	1.50%	5.87%	2.40%	2.43%	2.50%	15.71%	1.88%	2.88%	1.31%	2.24%	3.95%	3.82%	4.12%	3.77%		3.01%	2.66%	*	5.68%	5.09%	5.38%	2.40%
<b>2007-08</b>	1.65%	3.15%	1.80%	3.69%	1.48%	5.35%	2.14%	1.81%	2.89%	3.25%	2.25%	2.75%	1.32%	2.04%	4.09%	3.28%	3.50%	3.98%	*	2.85%	1.97%	*	4.89%	3.67%	5.93%	5.12%
<b>2009-10</b>	1.76%	3.17%	1.57%	3.02%	1.42%	4.85%	2.00%	1.62%	2.08%	3.45%	2.16%	2.86%	1.15%	1.62%	3.17%	2.51%	2.10%	3.70%	*	2.85%	1.66%	*	5.20%	3.21%	5.12%	5.04%
<b>2011-12</b>	1.46%	3.00%	1.80%	3.25%	1.71%	2.67%	1.64%	1.65%	2.35%	2.57%	1.73%	3.43%	1.10%	1.81%	3.65%	2.57%	2.16%	3.83%	*	2.56%	1.78%	*	4.53%	3.04%	5.36%	5.14%

NOTES: Blank cells - years that library did not report; Cells with \* - Institutional Budget information was not available

Okanagan College 2005-06 - Institutional Budget amount was a much lower amount than the 2007-08, 2009-10, and 2011-12 years.

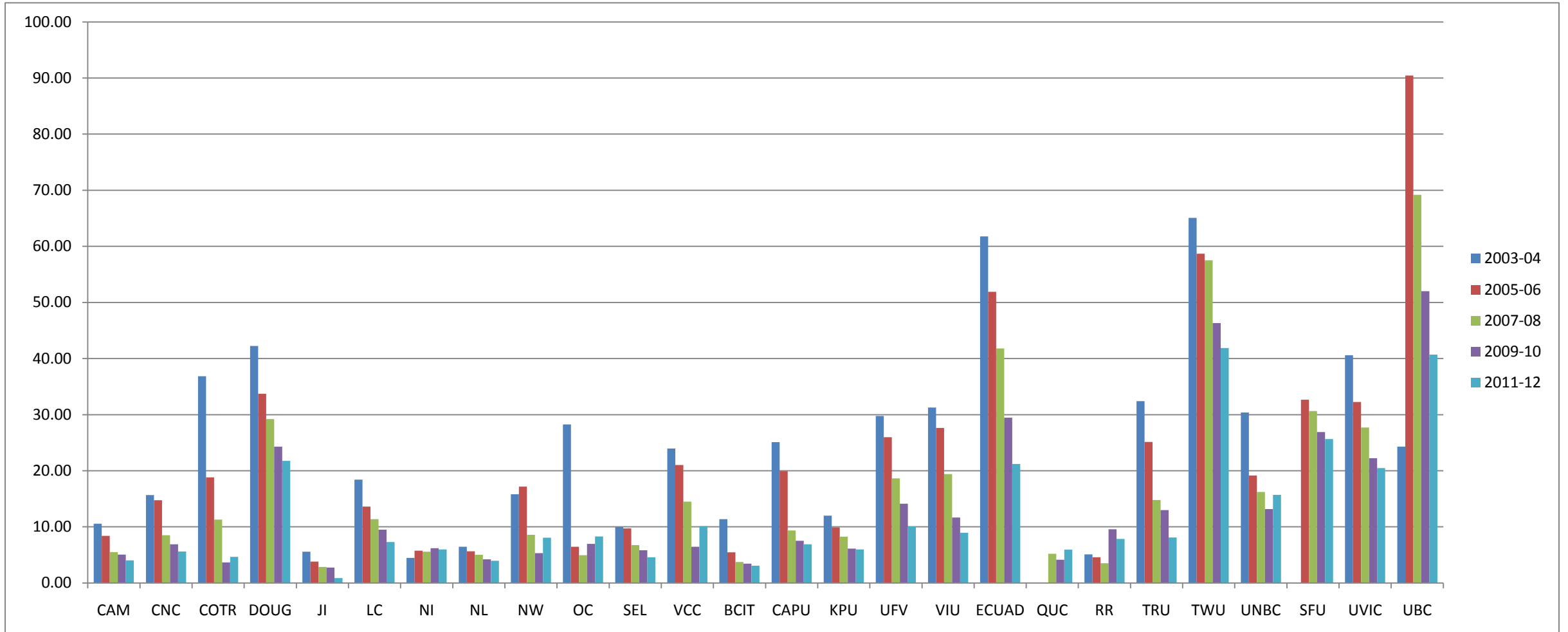
i) FTE Students per FTE Library Personnel.



Tier	1	1	1	1	1	1	1	1	1	1	1	1	2	2	2	2	2	3	3	3	3	3	3	4	4	5
Library	CAM	CNC	COTR	DOUG	JI	LC	NI	NL	NW	OC	SEL	VCC	BCIT	CAPU	KPU	UFV	VIU	ECUAD	QUC	RR	TRU	TWU	UNBC	SFU	UVIC	UBC
2003-04	310.8	238.1	261.3	179.1	334.8	202.1	229.4	207.9	239.2	180.1	284.4	231.1	336.5	291.6	167.4	224.0	223.3	111.1		105.9	239.2	129.9	86.5		88.3	104.2
2005-06	351.0	209.4	273.4	185.0	374.1	226.0	188.1	194.5	194.1	145.2	239.5	199.2	379.5	226.1	180.6	238.0	195.6	121.7		97.4	210.2	129.9	120.6	121.2	98.5	116.5
2007-08	430.8	281.9	323.0	177.7	395.6	228.6	247.4	215.0	235.1	212.5	279.2	221.4	504.0	266.0	188.1	247.1	233.6	111.1	30.0	108.0	319.2	108.9	120.1	123.2	94.8	126.7
2009-10	540.5	315.6	454.2	199.6	339.9	249.6	240.4	239.5	242.5	245.3	293.7	256.7	559.8	287.9	189.5	311.0	271.8	135.7	63.1	110.0	476.1	142.3	121.0	148.1	101.3	130.0
2011-12	505.6	286.0	351.1	233.1	334.6	277.7	231.3	217.3	183.7	223.2	262.9	251.9	588.6	278.2	188.0	320.3	270.8	131.0	66.7	152.3	375.7	148.7	107.4	154.2	115.4	137.8

NOTE: Blank cell - Library did not report in this year or data was not available.

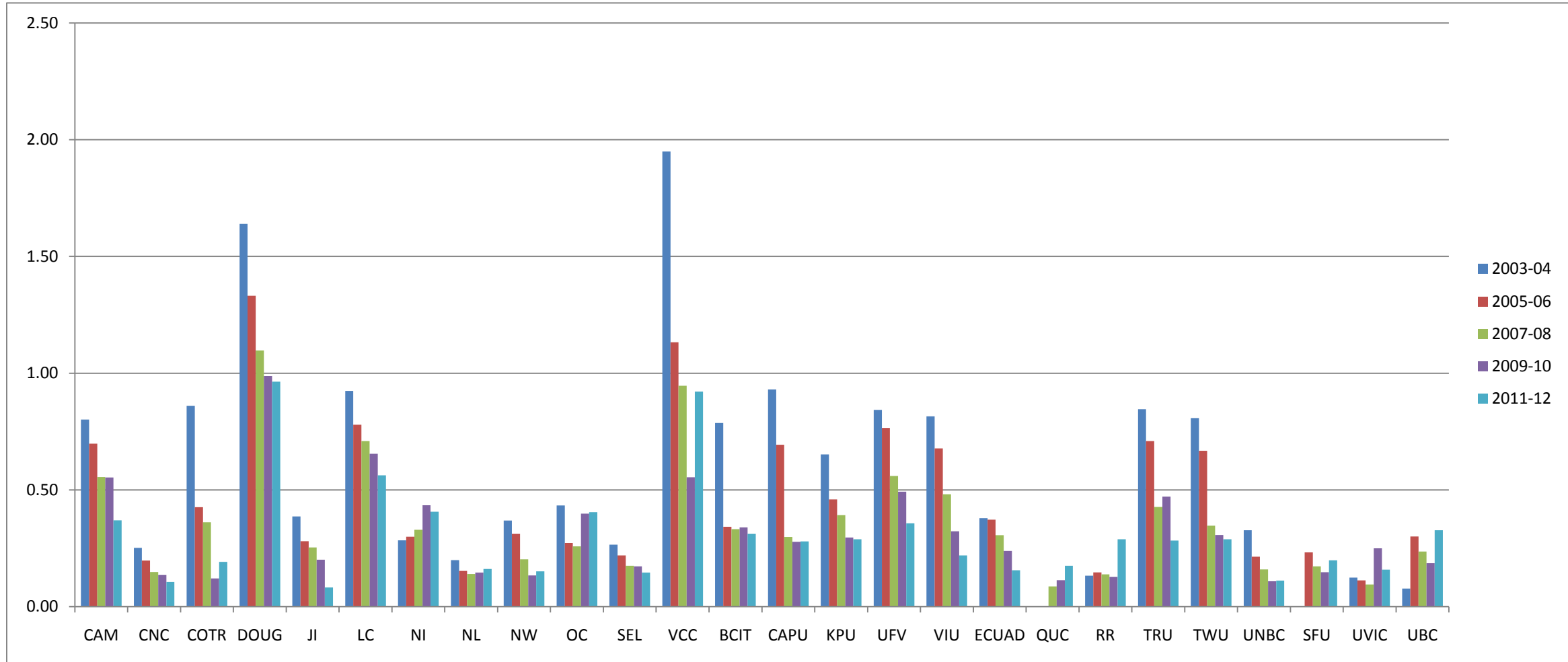
j) Direct Circulation per FTE Student.



Tier	1	1	1	1	1	1	1	1	1	1	1	1	2	2	2	2	2	3	3	3	3	3	3	4	4	5
Library	CAM	CNC	COTR	DOUG	JI	LC	NI	NL	NW	OC	SEL	VCC	BCIT	CAPU	KPU	UFV	VIU	ECUAD	QUC	RR	TRU	TWU	UNBC	SFU	UVIC	UBC
2003-04	10.58	15.67	36.83	42.25	5.56	18.44	4.46	6.45	15.82	28.25	9.97	23.97	11.37	25.10	12.01	29.77	31.28	61.76		5.08	32.39	65.08	30.39		40.60	24.29
2005-06	8.38	14.74	18.82	33.73	3.80	13.62	5.76	5.66	17.17	6.46	9.73	21.04	5.47	19.92	9.89	25.99	27.62	51.90		4.57	25.13	58.67	19.15	32.66	32.28	90.45
2007-08	5.50	8.52	11.29	29.21	2.87	11.38	5.58	5.02	8.58	4.93	6.76	14.50	3.73	9.36	8.24	18.64	19.42	41.81	5.21	3.52	14.79	57.53	16.23	30.65	27.72	69.18
2009-10	5.05	6.91	3.67	24.29	2.74	9.51	6.19	4.22	5.30	6.95	5.84	6.45	3.43	7.52	6.13	14.14	11.65	29.46	4.14	9.57	12.97	46.32	13.18	26.89	22.24	52.00
2011-12	4.03	5.61	4.67	21.76	0.87	7.31	5.96	3.96	8.06	8.29	4.59	10.14	3.07	6.89	5.97	10.10	8.95	21.23	5.95	7.84	8.09	41.86	15.69	25.66	20.49	40.70

NOTE: Blank cells - Library did not report in this year.

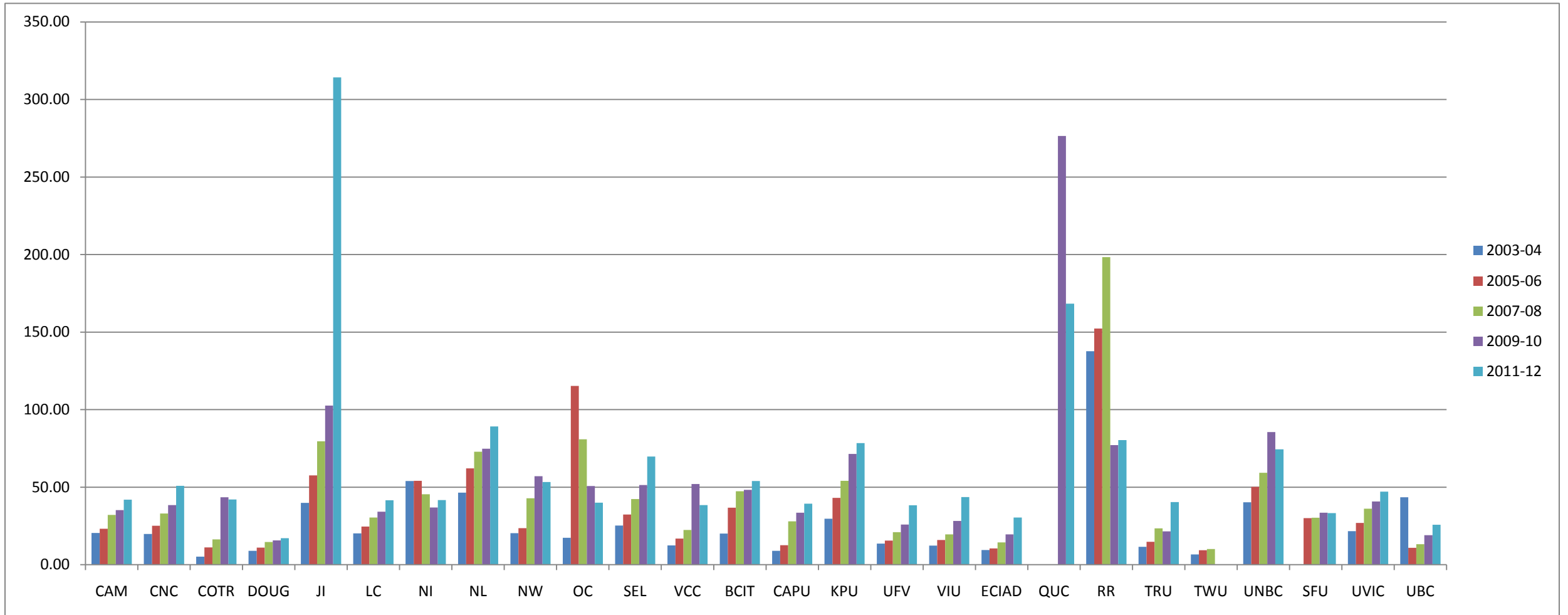
k) Direct Circulation per Total Volumes.



Tier	1	1	1	1	1	1	1	1	1	1	1	1	2	2	2	2	2	3	3	3	3	3	3	4	4	5
Library	CAM	CNC	COTR	DOUG	JI	LC	NI	NL	NW	OC	SEL	VCC	BCIT	CAPU	KPU	UFV	VIU	ECUAD	QUC	RR	TRU	TWU	UNBC	SFU	UVIC	UBC
2003-04	0.80	0.25	0.86	1.64	0.39	0.92	0.28	0.20	0.37	0.43	0.27	1.95	0.79	0.93	0.65	0.84	0.82	0.38		0.13	0.85	0.81	0.33		0.13	0.08
2005-06	0.70	0.20	0.43	1.33	0.28	0.78	0.30	0.15	0.31	0.27	0.22	1.13	0.34	0.69	0.46	0.77	0.68	0.37		0.15	0.71	0.67	0.21	0.23	0.11	0.30
2007-08	0.56	0.15	0.36	1.10	0.25	0.71	0.33	0.14	0.20	0.26	0.18	0.95	0.33	0.30	0.39	0.56	0.48	0.31	0.09	0.14	0.43	0.35	0.16	0.17	0.10	0.24
2009-10	0.55	0.14	0.12	0.99	0.20	0.65	0.43	0.15	0.13	0.40	0.17	0.55	0.34	0.28	0.30	0.49	0.32	0.24	0.11	0.13	0.47	0.31	0.11	0.15	0.25	0.19
2011-12	0.37	0.11	0.19	0.96	0.08	0.56	0.41	0.16	0.15	0.41	0.15	0.92	0.31	0.28	0.29	0.36	0.22	0.16	0.18	0.29	0.28	0.29	0.11	0.20	0.16	0.33

NOTE: Blank cells - Library did not report in this year.

### I) Total Library Expenditures per Circulation.

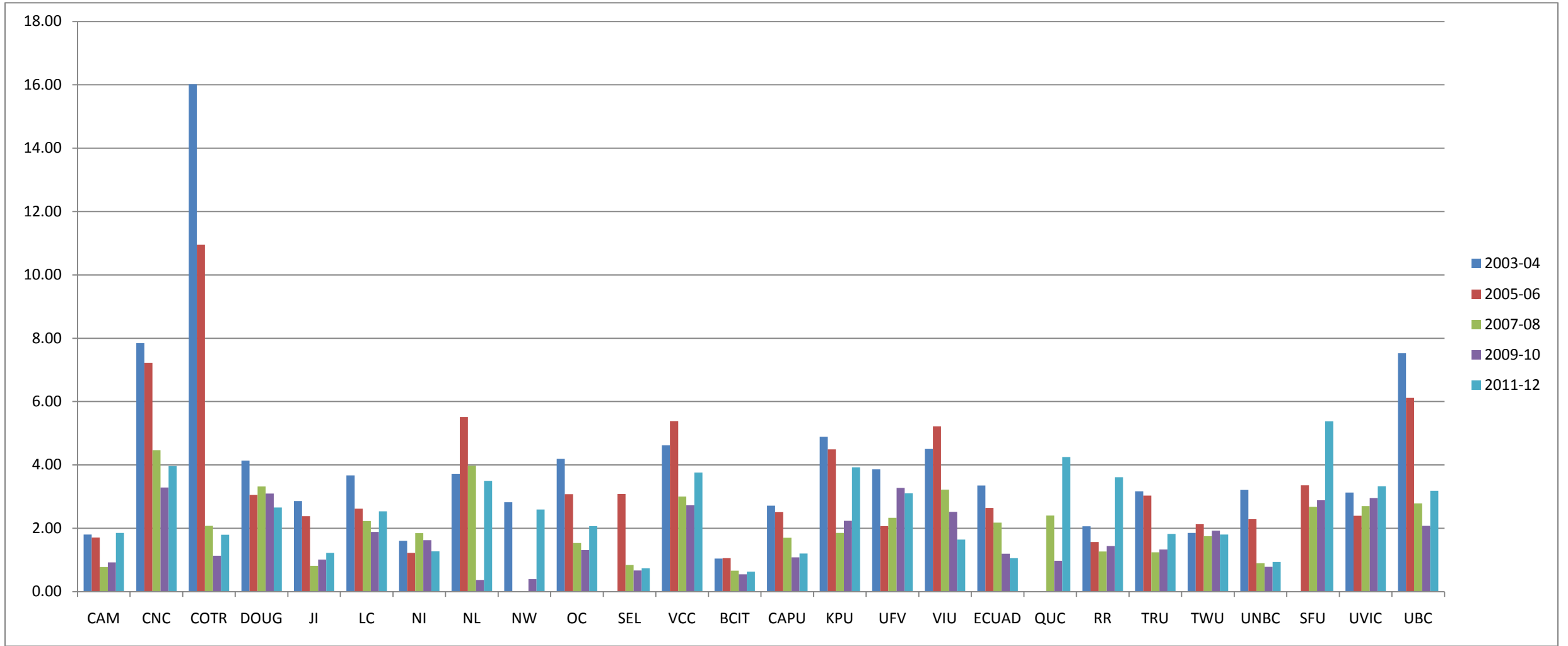


Tier	1	1	1	1	1	1	1	1	1	1	1	1	2	1	2	2	2	3	3	3	3	3	4	4	5	
Library	CAM	CNC	COTR	DOUG	JI	LC	NI	NL	NW	OC	SEL	VCC	BCIT	CAPU	KPU	UFV	VIU	ECIAD	QUC	RR	TRU	TWU	UNBC	SFU	UVIC	UBC
2003-04	20.41	19.79	5.14	8.88	39.88	20.20	53.96	46.44	20.36	17.33	25.28	12.48	20.12	8.92	29.68	13.56	12.26	9.47		137.61	11.51	6.60	40.19		21.61	43.51
2005-06	23.16	25.11	11.16	10.95	57.56	24.63	54.08	62.12	23.52	115.26	32.41	16.87	36.74	12.60	43.15	15.56	15.92	10.46		152.23	14.74	9.38	50.19	30.05	26.87	10.88
2007-08	32.10	32.94	16.30	14.64	79.63	30.37	45.37	72.83	42.84	80.86	42.29	22.34	47.33	27.90	54.04	21.00	19.60	14.31	*	198.35	23.38	10.16	59.28	30.31	36.05	13.20
2009-10	35.15	38.41	43.52	15.71	102.54	34.16	36.93	74.80	57.07	50.78	51.31	52.02	48.30	33.56	71.36	25.91	28.27	19.59	276.51	77.11	21.50		85.51	33.49	40.81	19.02
2011-12	41.93	50.91	42.06	17.05	314.29	41.59	41.61	89.12	53.36	39.96	69.68	38.48	53.95	39.29	78.45	38.25	43.55	30.38	168.32	80.32	40.42		74.43	33.22	47.14	25.73

NOTES: Blank cells - Library did not report in this year or total library expenditure amount was not available.

\* QUC 2007-08: result (\$912.99) was not included in order to make the chart more viewable.

**m) Reference Transactions per FTE Student.**

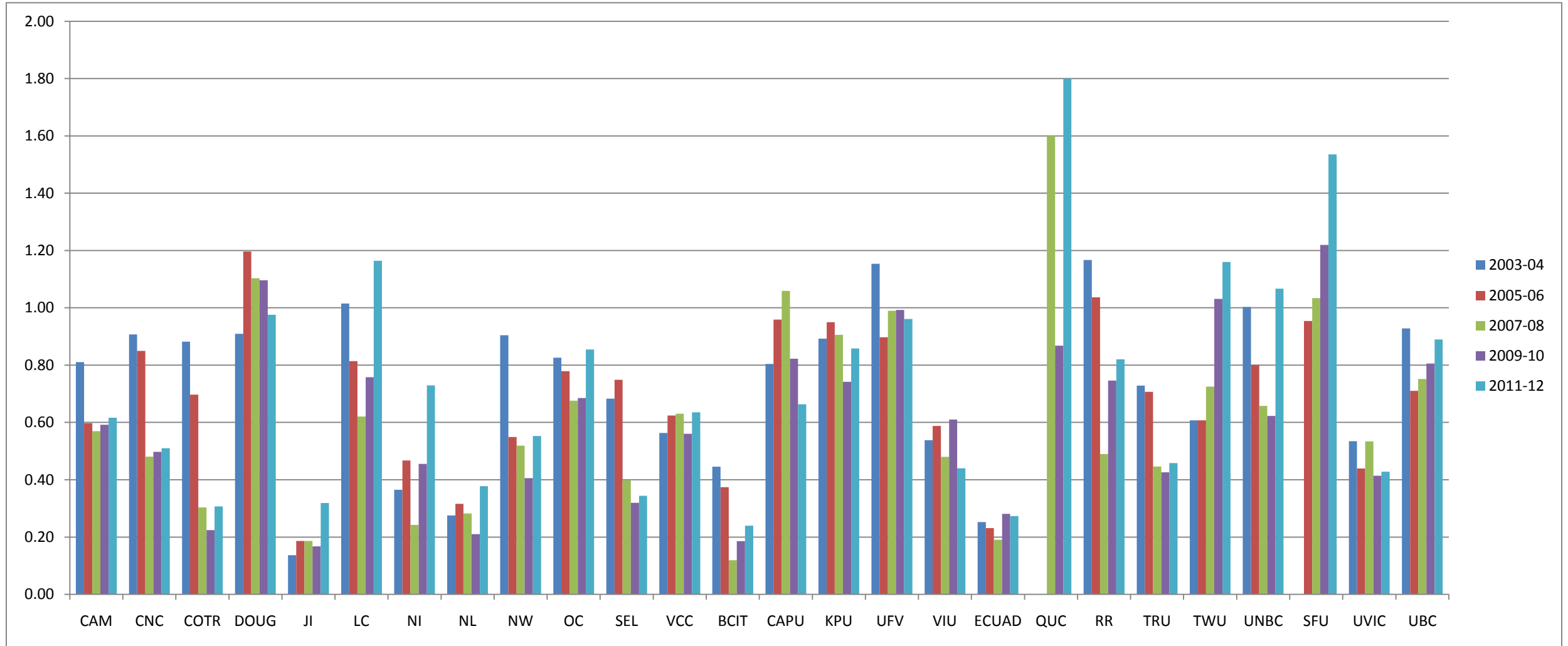


Tier	1	1	1	1	1	1	1	1	1	1	1	1	2	2	2	2	2	3	3	3	3	3	3	4	4	5
Library	CAM	CNC	COTR	DOUG	JI	LC	NI	NL	NW	OC	SEL	VCC	BCIT	CAPU	KPU	UFV	VIU	ECUAD	QUC	RR	TRU	TWU	UNBC	SFU	UVIC	UBC
2003-04	1.80	7.84	16.02	4.13	2.86	3.67	1.60	3.72	2.82	4.19	N/A	4.62	1.04	2.71	4.89	3.86	4.51	3.35		2.06	3.16	1.86	3.21		3.13	7.53
2005-06	1.70	7.22	10.96	3.05	2.38	2.62	1.22	5.51	0.00	3.08	3.08	5.39	1.06	2.51	4.49	2.07	5.22	2.65		1.57	3.03	2.12	2.29	3.36	2.39	6.12
2007-08	0.78	4.46	2.08	3.32	0.81	2.23	1.85	3.97	0.00	1.54	0.84	3.00	0.66	1.70	1.85	2.33	3.22	2.18	2.40	1.27	1.24	1.75	0.90	2.67	2.70	2.78
2009-10	0.93	3.29	1.13	3.09	1.01	1.89	1.62	0.37	0.39	1.31	0.67	2.73	0.55	1.08	2.24	3.28	2.52	1.20	0.97	1.44	1.33	1.92	0.79	2.89	2.96	2.08
2011-12	1.86	3.96	1.79	2.66	1.22	2.53	1.27	3.50	2.59	2.07	0.74	3.76	0.63	1.21	3.93	3.10	1.65	1.05	4.25	3.61	1.82	1.80	0.94	5.38	3.33	3.19

NOTE: Blank cells - Library did not report in this year. N/A - total of Reference Transactions not available.

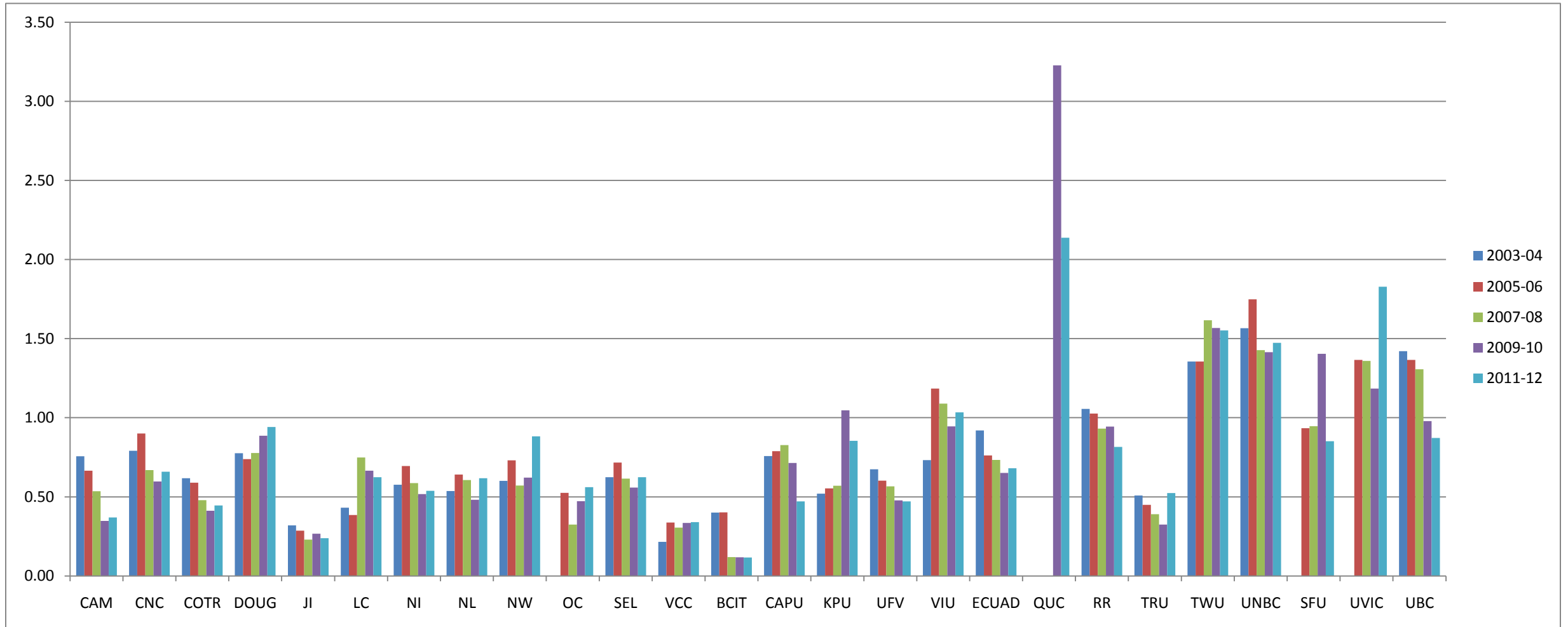


n) Number of Students Instructed per FTE Student.



NOTE: Blank cells - Library did not report in this year.

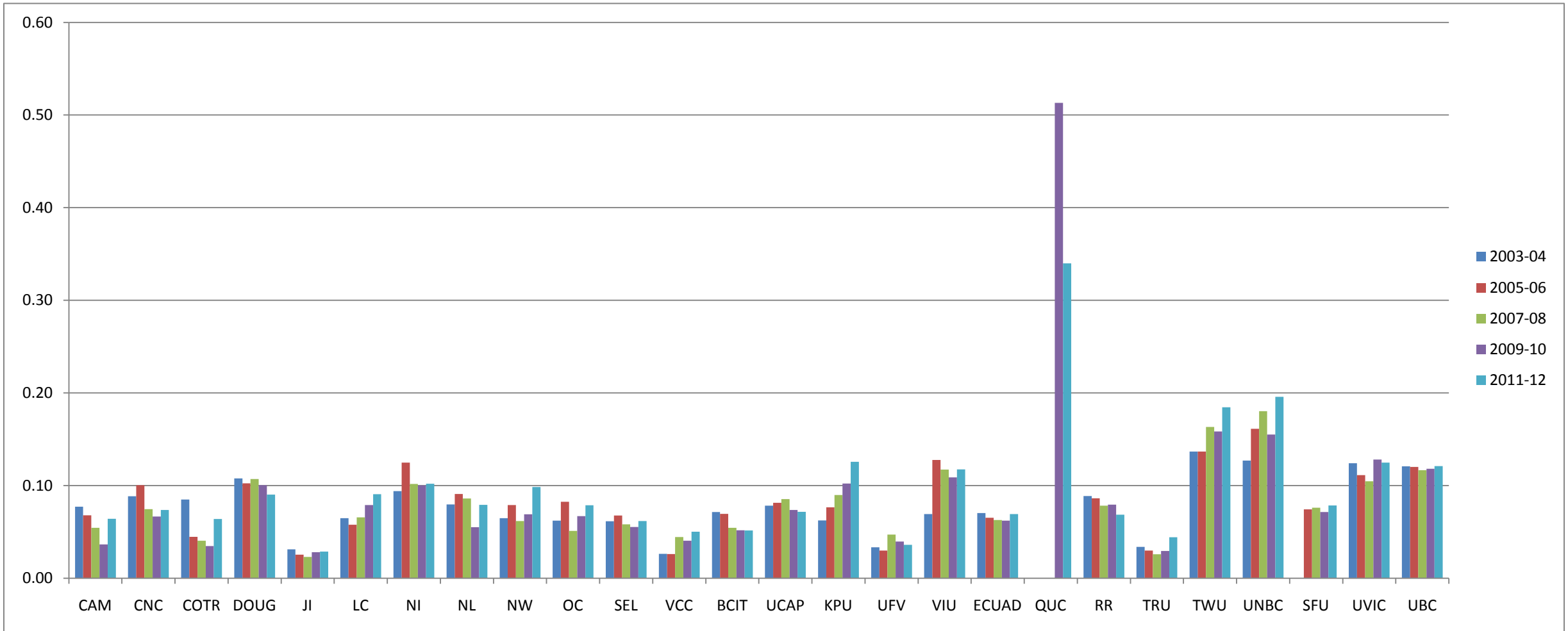
**o) Total Library Area per FTE Student.**



Tier	1	1	1	1	1	1	1	1	1	1	1	1	2	2	2	2	2	3	3	3	3	3	3	4	4	5
Library	CAM	CNC	COTR	DOUG	JI	LC	NI	NL	NW	OC	SEL	VCC	BCIT	CAPU	KPU	UFV	VIU	ECUAD	QUC	RR	TRU	TWU	UNBC	SFU	UVIC	UBC
2003-04	0.76	0.79	0.62	0.78	0.32	0.43	0.58	0.54	0.60	n/a	0.62	0.22	0.40	0.76	0.52	0.67	0.73	0.92		1.06	0.51	1.35	1.57		n/a	1.42
2005-06	0.67	0.90	0.59	0.74	0.29	0.38	0.69	0.64	0.73	0.53	0.72	0.34	0.40	0.79	0.55	0.60	1.18	0.76		1.03	0.45	1.35	1.75	0.93	1.37	1.37
2007-08	0.54	0.67	0.48	0.78	0.23	0.75	0.59	0.61	0.57	0.32	0.61	0.31	0.12	0.83	0.57	0.57	1.09	0.73	*	0.93	0.39	1.62	1.43	0.95	1.36	1.31
2009-10	0.35	0.60	0.41	0.89	0.27	0.67	0.52	0.48	0.62	0.47	0.56	0.34	0.12	0.71	1.05	0.48	0.95	0.65	3.23	0.94	0.33	1.57	1.41	1.40	1.18	0.98
2011-12	0.37	0.66	0.45	0.94	0.24	0.62	0.54	0.62	0.88	0.56	0.62	0.34	0.12	0.47	0.85	0.47	1.03	0.68	2.14	0.82	0.52	1.55	1.47	0.85	1.83	0.87

NOTE: n/a - Total Area data was not available. Blank cells - Library did not report in this year. \* QUC 2007-08 result of 11.4 sq. m per FTE was removed to make the chart more viewable.

p) Number of Seats per FTE Student.

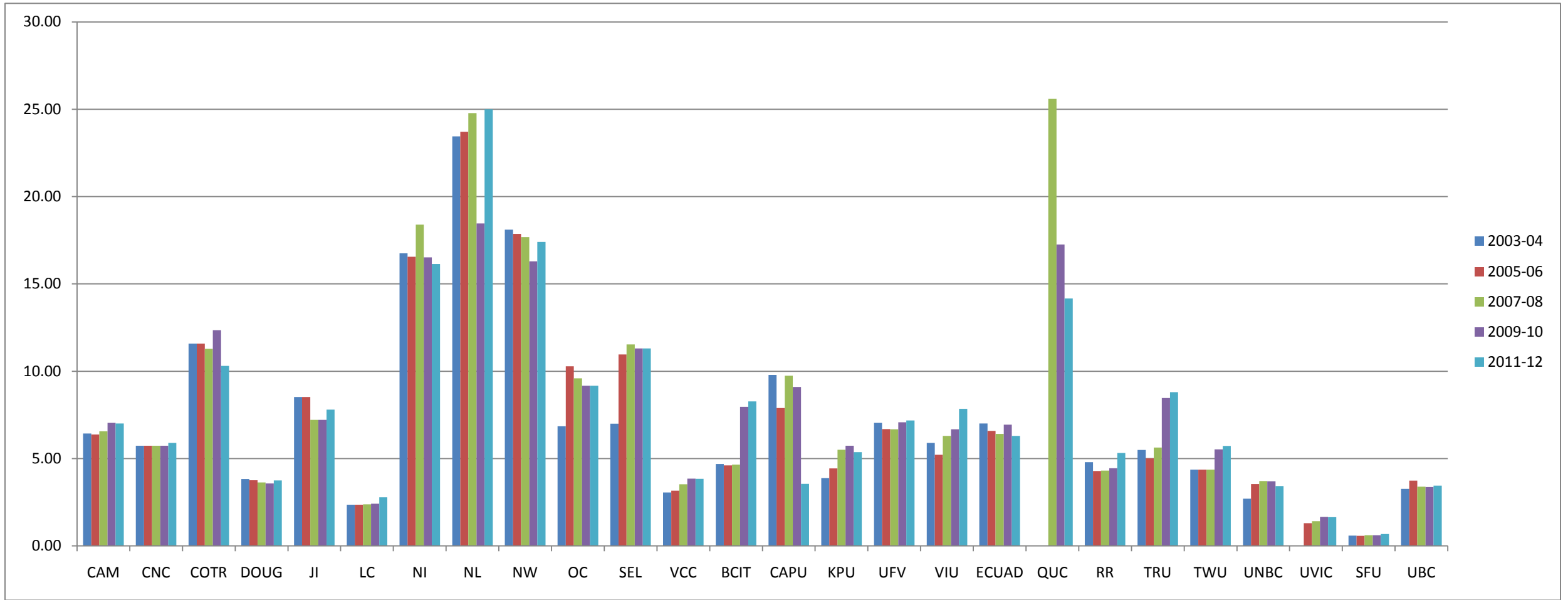


Tier	1	1	1	1	1	1	1	1	1	1	1	2	2	2	2	2	3	3	3	3	3	3	4	4	5	
Library	CAM	CNC	COTR	DOUG	JI	LC	NI	NL	NW	OC	SEL	VCC	BCIT	UCAP	KPU	UFV	VIU	ECUAD	QUC	RR	TRU	TWU	UNBC	SFU	UVIC	UBC
2003-04	0.08	0.09	0.09	0.11	0.03	0.06	0.09	0.08	0.06	0.06	0.06	0.03	0.07	0.08	0.06	0.03	0.07	0.07		0.09	0.03	0.14	0.13		0.12	0.12
2005-06	0.07	0.10	0.04	0.10	0.03	0.06	0.12	0.09	0.08	0.08	0.07	0.03	0.07	0.08	0.08	0.03	0.13	0.07		0.09	0.03	0.14	0.16	0.07	0.11	0.12
2007-08	0.05	0.07	0.04	0.11	0.02	0.07	0.10	0.09	0.06	0.05	0.06	0.04	0.05	0.09	0.09	0.05	0.12	0.06		0.08	0.03	0.16	0.18	0.08	0.10	0.12
2009-10	0.04	0.07	0.03	0.10	0.03	0.08	0.10	0.06	0.07	0.07	0.06	0.04	0.05	0.07	0.10	0.04	0.11	0.06	0.51	0.08	0.03	0.16	0.16	0.07	0.13	0.12
2011-12	0.06	0.07	0.06	0.09	0.03	0.09	0.10	0.08	0.10	0.08	0.06	0.05	0.05	0.07	0.13	0.04	0.12	0.07	0.34	0.07	0.04	0.18	0.20	0.08	0.12	0.12

NOTE: Blank cells - Library did not report in this year.

\*QUC 2007-08 (1.81) result was removed in order to make the chart more viewable.

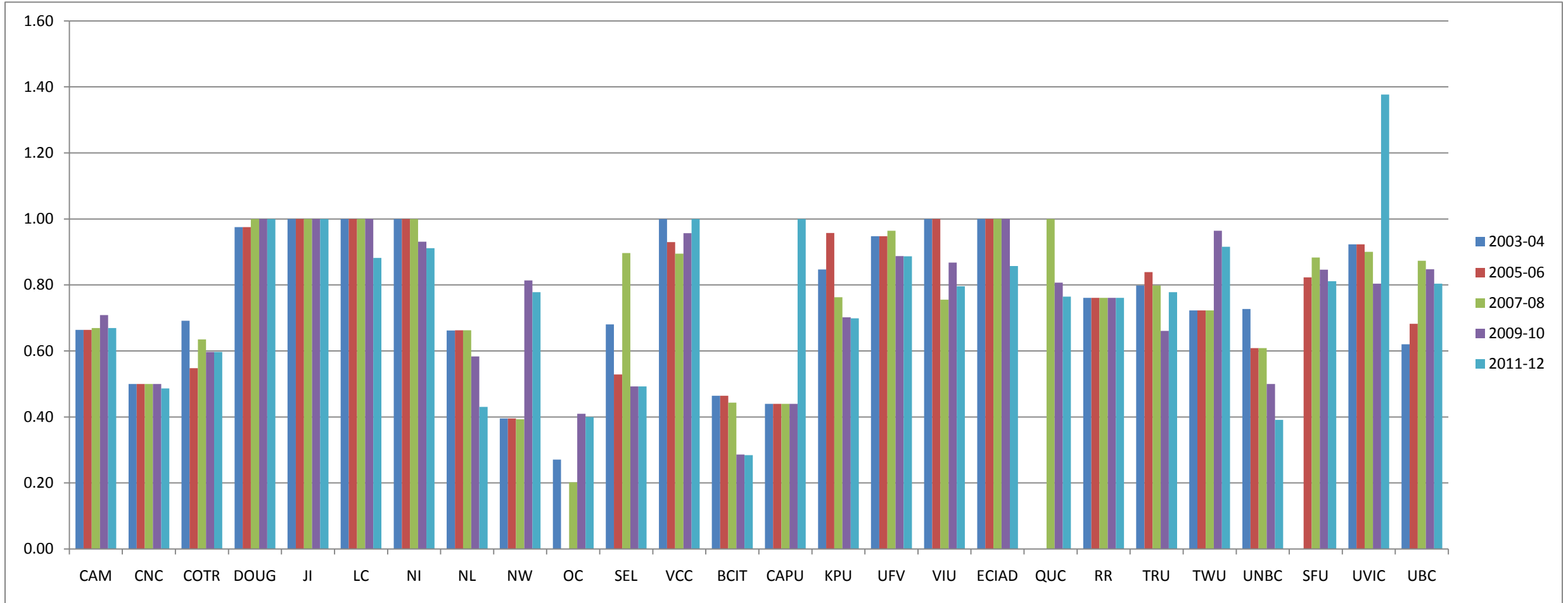
q) Hours Open per FTE Personnel.



Tier	1	1	1	1	1	1	1	1	1	1	1	1	2	2	2	2	2	3	3	3	3	3	3	4	4	5
Library	CAM	CNC	COTR	DOUG	JI	LC	NI	NL	NW	OC	SEL	VCC	BCIT	CAPU	KPU	UFV	VIU	ECUAD	QUC	RR	TRU	TWU	UNBC	UVIC	SFU	UBC
2003-04	6.43	5.74	11.59	3.82	8.52	2.36	16.75	23.45	18.11	6.84	7.00	3.06	4.69	9.79	3.88	7.04	5.90	7.01		4.79	5.49	4.37	2.71		0.59	3.27
2005-06	6.38	5.74	11.59	3.76	8.52	2.35	16.55	23.71	17.87	10.28	10.97	3.16	4.61	7.89	4.44	6.69	5.22	6.59		4.29	5.01	4.37	3.54	1.30	0.58	3.73
2007-08	6.56	5.74	11.28	3.63	7.22	2.38	18.39	24.78	17.68	9.60	11.53	3.53	4.66	9.74	5.51	6.68	6.29	6.41	25.60	4.31	5.63	4.37	3.71	1.41	0.61	3.39
2009-10	7.04	5.74	12.35	3.58	7.22	2.42	16.52	18.46	16.29	9.17	11.31	3.85	7.97	9.10	5.73	7.08	6.68	6.95	17.26	4.45	8.46	5.53	3.71	1.65	0.62	3.37
2011-12	7.00	5.90	10.31	3.75	7.80	2.78	16.14	25.00	17.41	9.17	11.31	3.84	8.27	3.55	5.36	7.18	7.85	6.29	14.17	5.33	8.80	5.72	3.43	1.65	0.68	3.44

NOTE: Blank cells - Library did not report in this year.

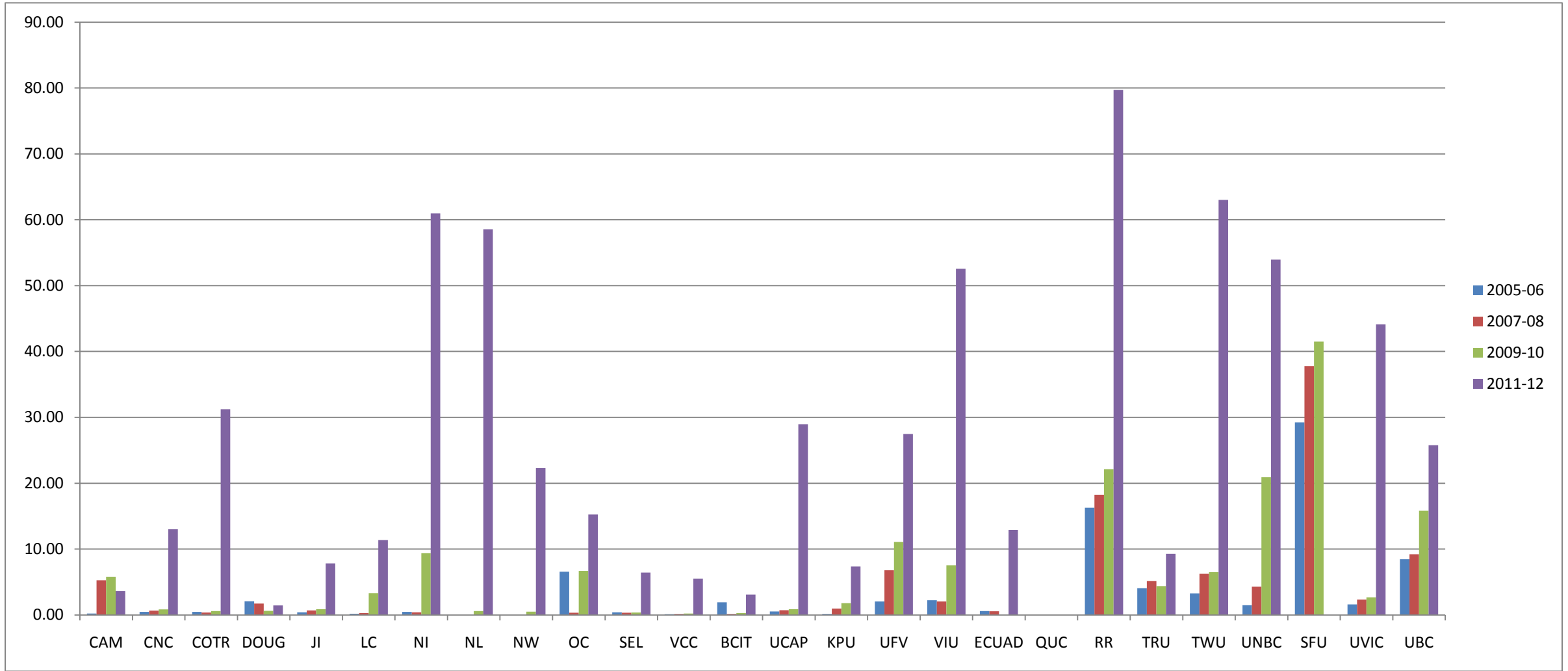
r) Reference Hours per Total Open Hours.



Tier	1	1	1	1	1	1	1	1	1	1	1	1	2	1	2	2	2	3	3	3	3	3	3	4	4	5
Library	CAM	CNC	COTR	DOUG	JI	LC	NI	NL	NW	OC	SEL	VCC	BCIT	CAPU	KPU	UFV	VIU	ECIAD	QUC	RR	TRU	TWU	UNBC	SFU	UVIC	UBC
2003-04	0.66	0.50	0.69	0.98	1.00	1.00	1.00	0.66	0.40	0.27	0.68	1.00	0.46	0.44	0.85	0.95	1.00	1.00		0.76	0.80	0.72	0.73		0.92	0.62
2005-06	0.66	0.50	0.55	0.98	1.00	1.00	1.00	0.66	0.40	*	0.53	0.93	0.46	0.44	0.96	0.95	1.00	1.00		0.76	0.84	0.72	0.61	0.82	0.92	0.68
2007-08	0.67	0.50	0.64	1.00	1.00	1.00	1.00	0.66	0.39	0.20	0.90	0.89	0.44	0.44	0.76	0.96	0.76	1.00	1.00	0.76	0.80	0.72	0.61	0.88	0.90	0.87
2009-10	0.71	0.50	0.60	1.00	1.00	1.00	0.93	0.58	0.81	0.41	0.49	0.96	0.29	0.44	0.70	0.89	0.87	1.00	0.81	0.76	0.66	0.96	0.50	0.85	0.80	0.85
2011-12	0.67	0.49	0.60	1.00	1.00	0.88	0.91	0.43	0.78	0.40	0.49	1.00	0.28	1.00	0.70	0.89	0.80	0.86	0.76	0.76	0.78	0.92	0.39	0.81	1.38	0.80

NOTE: Blank cells - Library did not report in this year. \* OC - Reference hours not provided in this year.

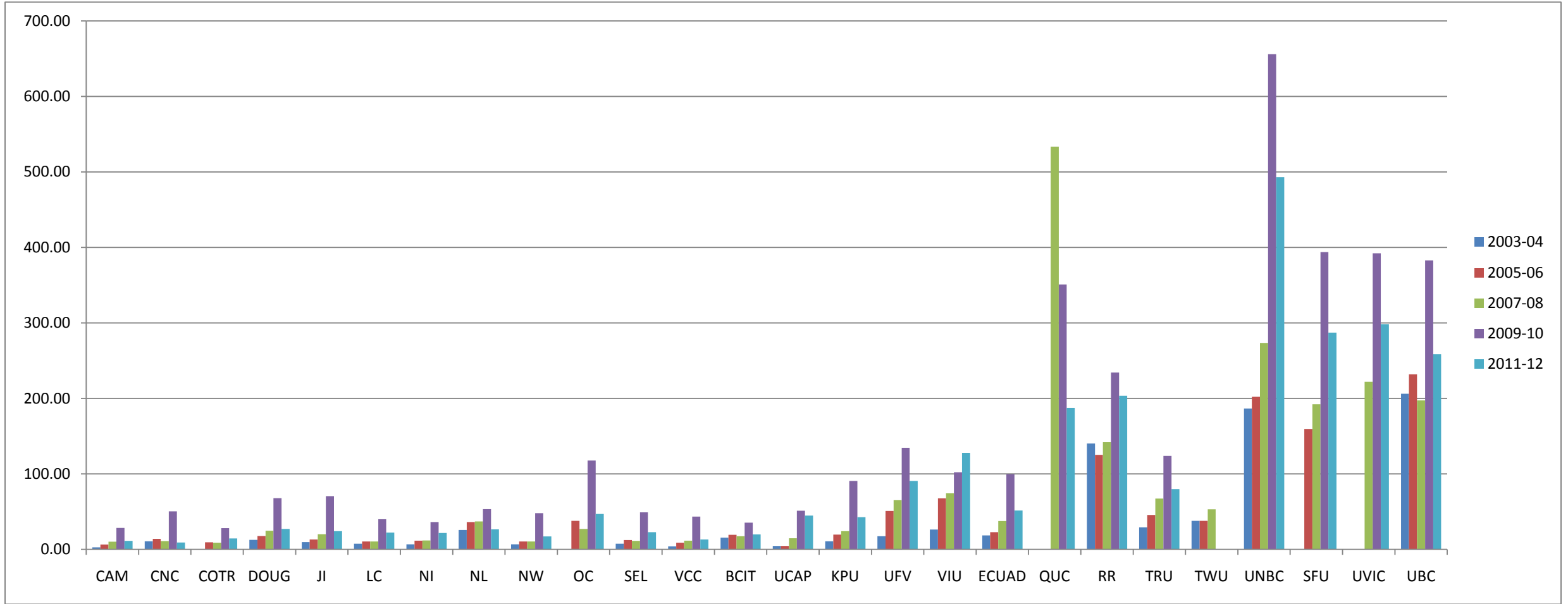
s) Electronic titles per FTE Student.



Tier	1	1	1	1	1	1	1	1	1	1	1	1	2	2	2	2	2	3	3	3	3	3	3	4	4	5
Library	CAM	CNC	COTR	DOUG	JI	LC	NI	NL	NW	OC	SEL	VCC	BCIT	UCAP	KPU	UFV	VIU	ECUAD	QUC	RR	TRU	TWU	UNBC	SFU	UVIC	UBC
2005-06	0.23	0.47	0.46	2.08	0.40	0.19	0.45	n/a	n/a	6.58	0.39	0.11	1.91	0.54	0.15	2.04	2.23	0.59	n/a	16.30	4.07	3.26	1.48	29.26	1.60	8.45
2007-08	5.26	0.66	0.38	1.72	0.70	0.29	0.39	0.01	n/a	0.34	0.35	0.16	0.15	0.73	0.97	6.79	2.04	0.56	n/a	18.25	5.15	6.25	4.28	37.76	2.34	9.20
2009-10	5.81	0.85	0.58	0.62	0.87	3.31	9.36	0.58	0.50	6.68	0.36	0.22	0.26	0.89	1.81	11.08	7.53	0.00	n/a	22.12	4.37	6.51	20.91	41.49	2.67	15.81
2011-12	3.62	13.02	31.24	1.44	7.82	11.37	60.97	58.55	22.28	15.24	6.44	5.52	3.08	28.97	7.37	27.48	52.54	12.92	note	79.73	9.28	63.01	53.95	note	44.13	25.78

NOTE: 2011-12 results (QUC 307.5 and SFU 147.01) removed to make the chart more viewable.

t) Electronic Expenditures per FTE Student.



Tier	1	1	1	1	1	1	1	1	1	1	1	1	2	2	2	2	2	3	3	3	3	3	3	4	4	5
Library	CAM	CNC	COTR	DOUG	JI	LC	NI	NL	NW	OC	SEL	VCC	BCIT	UCAP	KPU	UFV	VIU	ECUAD	QUC	RR	TRU	TWU	UNBC	SFU	UVIC	UBC
2003-04	2.82	10.72	*	12.78	9.77	7.46	6.67	25.88	6.78	*	7.72	4.12	15.71	4.60	10.87	17.54	26.48	18.54		140.31	29.34	37.97	186.74		*	206.22
2005-06	6.62	14.02	9.59	17.89	13.28	10.47	11.59	36.36	10.65	37.94	12.36	8.93	19.46	4.67	19.58	51.04	67.60	22.94		125.36	45.58	37.97	202.12	159.47	*	231.88
2007-08	10.19	11.08	8.88	24.69	20.22	10.56	11.99	37.03	10.58	27.08	11.27	11.50	17.53	14.82	24.31	65.32	74.29	37.64	533.33	142.00	67.49	53.04	273.49	192.15	222.05	197.23
2009-10	28.42	50.54	28.24	67.77	70.53	39.89	36.24	53.47	48.00	117.65	49.20	43.44	35.55	51.31	90.70	134.51	102.07	99.46	350.94	234.44	124.00	*	655.83	393.81	392.18	382.69
2011-12	11.37	9.20	14.58	27.18	24.27	22.35	21.89	26.67	17.28	46.97	22.91	13.13	19.86	44.86	42.64	90.66	128.00	51.64	187.50	203.61	79.84	*	492.87	287.25	298.34	258.53

\* electronic expenditure data n/a

blank cell - library did not report in these years.